



**June
2023**

Flint Hills MLS Statistics



**FLINT HILLS
ASSOCIATION
OF REALTORS®**

Clay County Housing Report



Market Overview

Clay County Home Sales Rose in June

Total home sales in Clay County rose by 7.7% last month to 14 units, compared to 13 units in June 2022. Total sales volume was \$2.9 million, up 68.2% from a year earlier.

The median sale price in June was \$176,750, up from \$115,000 a year earlier. Homes that sold in June were typically on the market for 43 days and sold for 98.2% of their list prices.

Clay County Active Listings Up at End of June

The total number of active listings in Clay County at the end of June was 17 units, up from 15 at the same point in 2022. This represents a 2.3 months' supply of homes available for sale. The median list price of homes on the market at the end of June was \$170,000.

During June, a total of 5 contracts were written down from 12 in June 2022. At the end of the month, there were 8 contracts still pending.

Report Contents

- Summary Statistics – Page 2
- Closed Listing Analysis – Page 3
- Active Listings Analysis – Page 7
- Months' Supply Analysis – Page 11
- New Listings Analysis – Page 12
- Contracts Written Analysis – Page 15
- Pending Contracts Analysis – Page 19

Contact Information

Margaret Pendleton, Association Executive
 Flint Hills Association of REALTORS®
 205 S. Seth Child Road
 Manhattan, KS 66502
 785-776-1203
ae@flinthillsrealtors.net
www.flinthillsrealtors.net



**June
2023**

Flint Hills MLS Statistics



**FLINT HILLS
ASSOCIATION
OF REALTORS®**

Clay County Summary Statistics

June MLS Statistics Three-year History		Current Month			Year-to-Date		
		2023	2022	2021	2023	2022	2021
Home Sales		14	13	16	46	52	69
Change from prior year		7.7%	-18.8%	100.0%	-11.5%	-24.6%	109.1%
Active Listings		17	15	22	N/A	N/A	N/A
Change from prior year		13.3%	-31.8%	-48.8%			
Months' Supply		2.3	1.7	2.0	N/A	N/A	N/A
Change from prior year		35.3%	-15.0%	-69.2%			
New Listings		7	22	10	52	66	84
Change from prior year		-68.2%	120.0%	-28.6%	-21.2%	-21.4%	9.1%
Contracts Written		5	12	5	49	57	74
Change from prior year		-58.3%	140.0%	-70.6%	-14.0%	-23.0%	48.0%
Pending Contracts		8	17	19	N/A	N/A	N/A
Change from prior year		-52.9%	-10.5%	-13.6%			
Sales Volume (1,000s)		2,900	1,724	2,034	8,060	6,911	8,164
Change from prior year		68.2%	-15.2%	217.8%	16.6%	-15.3%	109.8%
Average	Sale Price	207,171	132,615	127,129	175,215	132,904	118,319
	Change from prior year	56.2%	4.3%	58.8%	31.8%	12.3%	0.3%
	List Price of Actives	189,724	166,393	132,164	N/A	N/A	N/A
	Change from prior year	14.0%	25.9%	4.2%			
	Days on Market	66	46	37	54	49	78
Change from prior year	43.5%	24.3%	-47.1%	10.2%	-37.2%	-6.0%	
Percent of List	96.9%	95.2%	98.1%	95.4%	95.3%	97.0%	
Change from prior year	1.8%	-3.0%	1.2%	0.1%	-1.8%	5.2%	
Percent of Original	93.2%	93.1%	97.6%	93.8%	93.2%	94.8%	
Change from prior year	0.1%	-4.6%	1.8%	0.6%	-1.7%	5.5%	
Median	Sale Price	176,750	115,000	113,000	164,400	115,000	95,000
	Change from prior year	53.7%	1.8%	37.0%	43.0%	21.1%	-13.2%
	List Price of Actives	170,000	129,900	85,000	N/A	N/A	N/A
	Change from prior year	30.9%	52.8%	-29.2%			
	Days on Market	43	13	11	32	29	17
Change from prior year	230.8%	18.2%	-60.7%	10.3%	70.6%	-70.7%	
Percent of List	98.2%	96.2%	99.5%	97.1%	95.3%	99.3%	
Change from prior year	2.1%	-3.3%	1.8%	1.9%	-4.0%	1.8%	
Percent of Original	94.4%	94.9%	99.5%	95.0%	93.8%	97.3%	
Change from prior year	-0.5%	-4.6%	3.8%	1.3%	-3.6%	5.6%	

Note: Year-to-date statistics cannot be calculated for Active Listings, Months' Supply and Pending Contracts.



Clay County Closed Listings Analysis

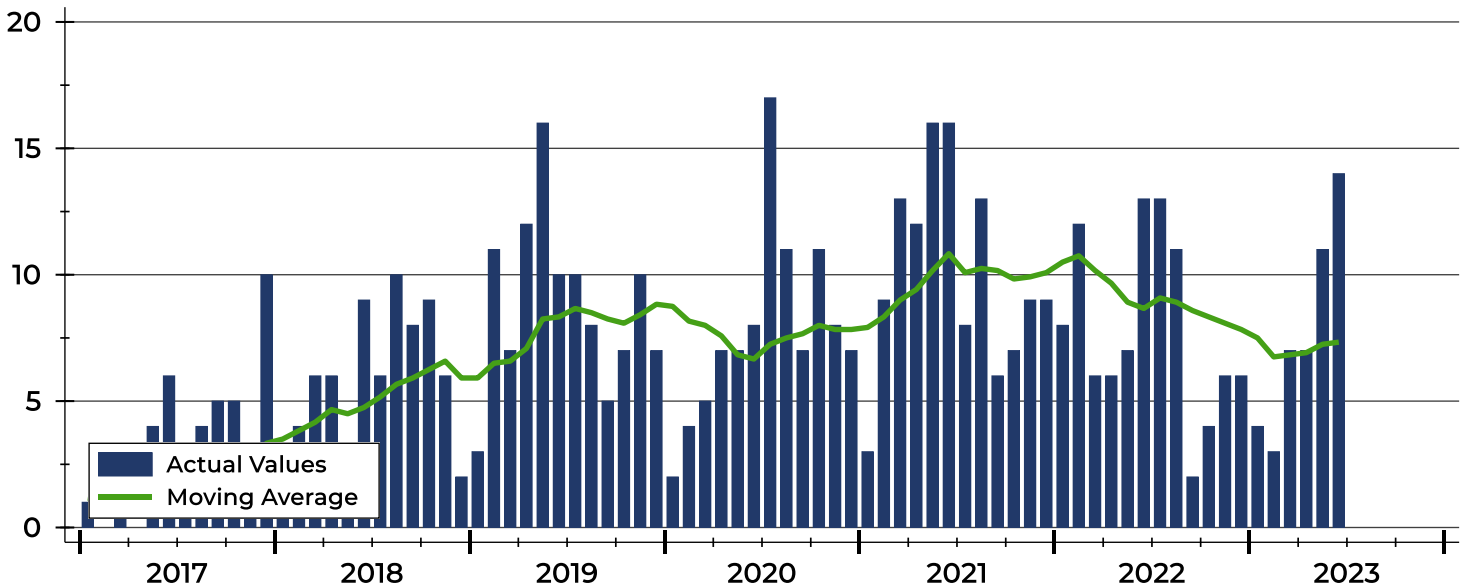
Summary Statistics for Closed Listings		2023	June 2022	Change	2023	Year-to-Date 2022	Change
Closed Listings		14	13	7.7%	46	52	-11.5%
Volume (1,000s)		2,900	1,724	68.2%	8,060	6,911	16.6%
Months' Supply		2.3	1.7	35.3%	N/A	N/A	N/A
Average	Sale Price	207,171	132,615	56.2%	175,215	132,904	31.8%
	Days on Market	66	46	43.5%	54	49	10.2%
	Percent of List	96.9%	95.2%	1.8%	95.4%	95.3%	0.1%
	Percent of Original	93.2%	93.1%	0.1%	93.8%	93.2%	0.6%
Median	Sale Price	176,750	115,000	53.7%	164,400	115,000	43.0%
	Days on Market	43	13	230.8%	32	29	10.3%
	Percent of List	98.2%	96.2%	2.1%	97.1%	95.3%	1.9%
	Percent of Original	94.4%	94.9%	-0.5%	95.0%	93.8%	1.3%

A total of 14 homes sold in Clay County in June, up from 13 units in June 2022. Total sales volume rose to \$2.9 million compared to \$1.7 million in the previous year.

The median sales price in June was \$176,750, up 53.7% compared to the prior year. Median days on market was 43 days, up from 38 days in May, and up from 13 in June 2022.

History of Closed Listings

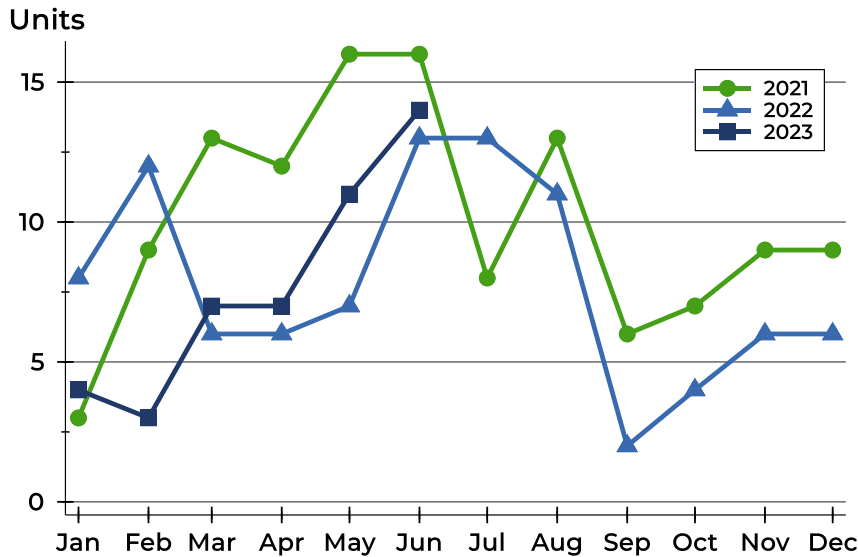
Units





Clay County Closed Listings Analysis

Closed Listings by Month



Month	2021	2022	2023
January	3	8	4
February	9	12	3
March	13	6	7
April	12	6	7
May	16	7	11
June	16	13	14
July	8	13	13
August	13	11	11
September	6	2	2
October	7	4	4
November	9	6	6
December	9	6	6

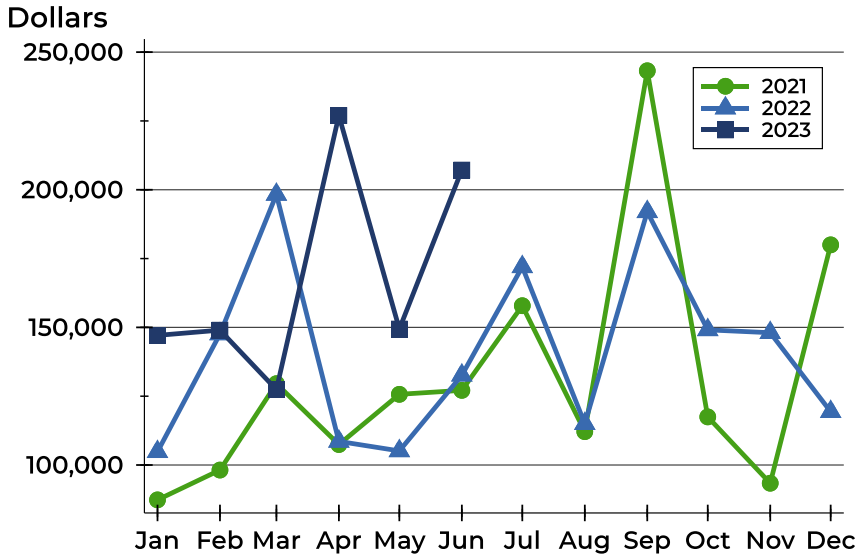
Closed Listings by Price Range

Price Range	Sales		Months' Supply	Sale Price		Days on Market		Price as % of List		Price as % of Orig.	
	Number	Percent		Average	Median	Avg.	Med.	Avg.	Med.	Avg.	Med.
Below \$25,000	0	0.0%	N/A	N/A	N/A	N/A	N/A	N/A	N/A	N/A	N/A
\$25,000-\$49,999	0	0.0%	N/A	N/A	N/A	N/A	N/A	N/A	N/A	N/A	N/A
\$50,000-\$99,999	2	14.3%	3.4	76,450	76,450	86	86	92.3%	92.3%	85.1%	85.1%
\$100,000-\$124,999	1	7.1%	0.0	110,000	110,000	19	19	88.0%	88.0%	88.0%	88.0%
\$125,000-\$149,999	2	14.3%	2.2	132,750	132,750	130	130	97.6%	97.6%	96.6%	96.6%
\$150,000-\$174,999	1	7.1%	0.9	150,000	150,000	39	39	88.3%	88.3%	83.4%	83.4%
\$175,000-\$199,999	3	21.4%	3.0	179,500	178,500	22	10	100.9%	100.0%	100.9%	100.0%
\$200,000-\$249,999	1	7.1%	5.0	205,000	205,000	10	10	97.6%	97.6%	93.6%	93.6%
\$250,000-\$299,999	0	0.0%	N/A	N/A	N/A	N/A	N/A	N/A	N/A	N/A	N/A
\$300,000-\$399,999	3	21.4%	0.0	324,500	320,000	118	67	99.4%	98.7%	90.5%	92.8%
\$400,000-\$499,999	0	0.0%	N/A	N/A	N/A	N/A	N/A	N/A	N/A	N/A	N/A
\$500,000-\$749,999	1	7.1%	1.0	505,000	505,000	7	7	102.0%	102.0%	102.0%	102.0%
\$750,000-\$999,999	0	0.0%	N/A	N/A	N/A	N/A	N/A	N/A	N/A	N/A	N/A
\$1,000,000 and up	0	0.0%	N/A	N/A	N/A	N/A	N/A	N/A	N/A	N/A	N/A



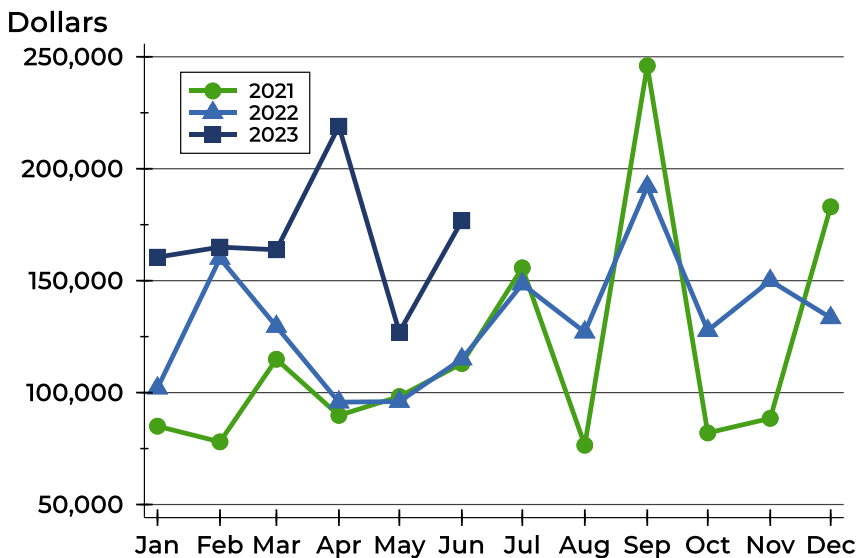
Clay County Closed Listings Analysis

Average Price



Month	2021	2022	2023
January	87,333	104,813	147,100
February	98,167	147,613	149,000
March	129,554	198,296	127,400
April	107,446	108,583	226,971
May	125,681	105,129	149,409
June	127,129	132,615	207,171
July	157,875	172,000	
August	112,127	115,020	
September	243,232	192,000	
October	117,486	149,100	
November	93,389	148,067	
December	179,989	119,367	

Median Price

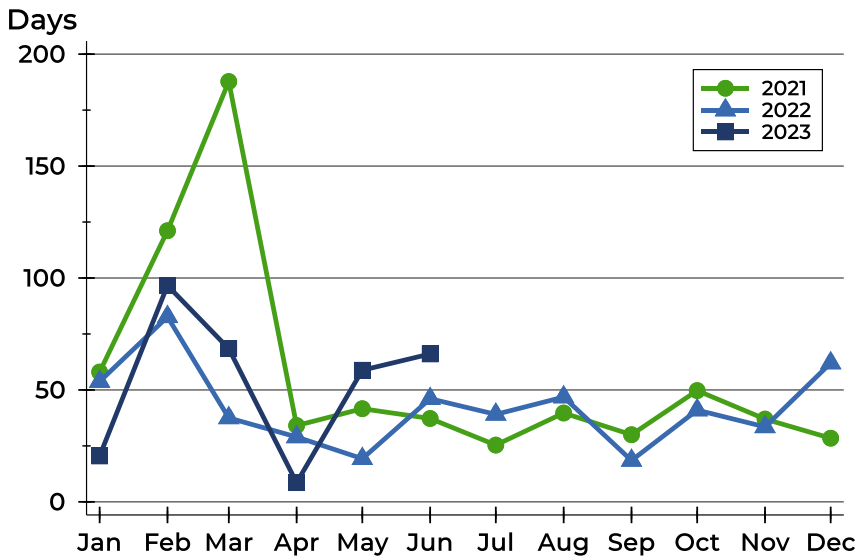


Month	2021	2022	2023
January	85,000	102,000	160,500
February	78,000	159,950	165,000
March	114,900	129,538	163,800
April	89,825	95,750	219,000
May	98,250	96,000	127,000
June	113,000	115,000	176,750
July	155,750	148,500	
August	76,500	127,000	
September	246,000	192,000	
October	82,000	127,700	
November	88,500	150,000	
December	183,000	133,400	



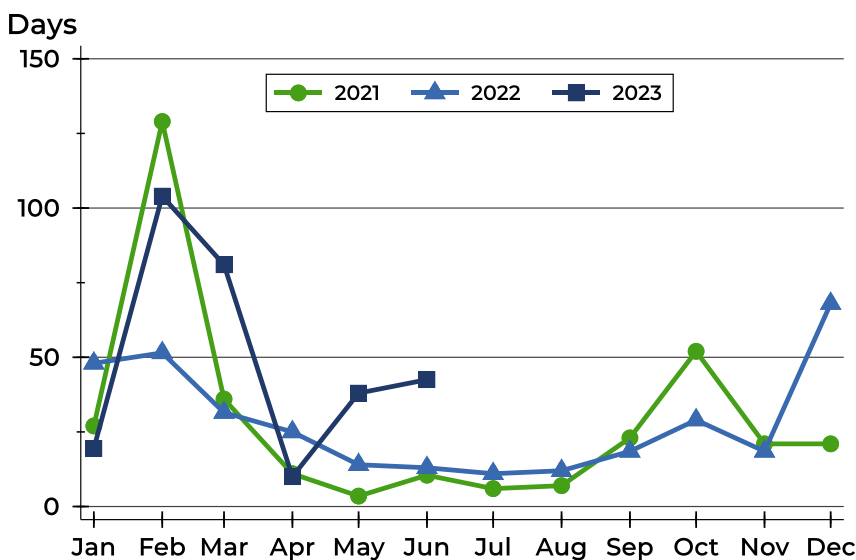
Clay County Closed Listings Analysis

Average DOM



Month	2021	2022	2023
January	58	54	21
February	121	83	97
March	188	38	68
April	34	29	9
May	42	19	59
June	37	46	66
July	25	39	
August	40	47	
September	30	19	
October	50	41	
November	37	34	
December	28	62	

Median DOM



Month	2021	2022	2023
January	27	48	20
February	129	52	104
March	36	32	81
April	11	25	10
May	4	14	38
June	11	13	43
July	6	11	
August	7	12	
September	23	19	
October	52	29	
November	21	19	
December	21	68	



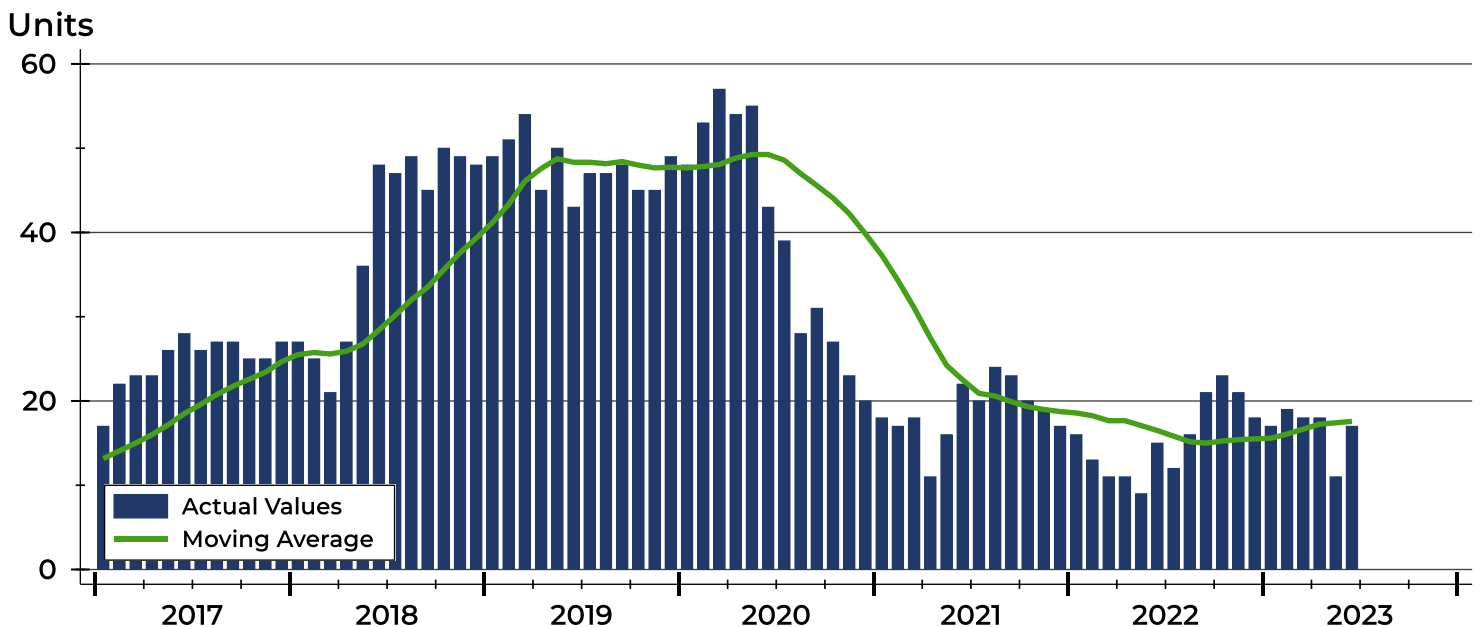
Clay County Active Listings Analysis

Summary Statistics for Active Listings		2023	End of June 2022	Change
Active Listings		17	15	13.3%
Volume (1,000s)		3,225	2,496	29.2%
Months' Supply		2.3	1.7	35.3%
Average	List Price	189,724	166,393	14.0%
	Days on Market	92	65	41.5%
	Percent of Original	94.8%	94.1%	0.7%
Median	List Price	170,000	129,900	30.9%
	Days on Market	42	18	133.3%
	Percent of Original	100.0%	100.0%	0.0%

A total of 17 homes were available for sale in Clay County at the end of June. This represents a 2.3 months' supply of active listings.

The median list price of homes on the market at the end of June was \$170,000, up 30.9% from 2022. The typical time on market for active listings was 42 days, up from 18 days a year earlier.

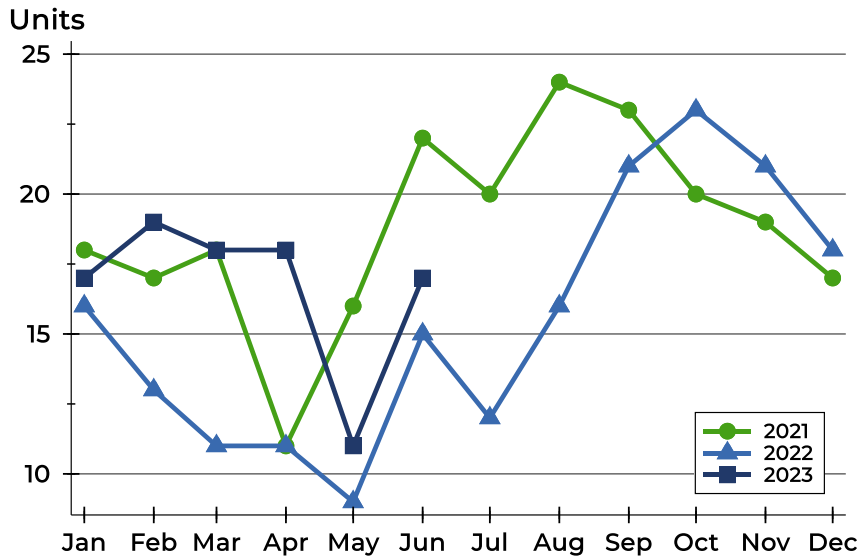
History of Active Listings





Clay County Active Listings Analysis

Active Listings by Month



Month	2021	2022	2023
January	18	16	17
February	17	13	19
March	18	11	18
April	11	11	18
May	16	9	11
June	22	15	17
July	20	12	12
August	24	16	16
September	23	21	21
October	20	23	23
November	19	21	21
December	17	18	18

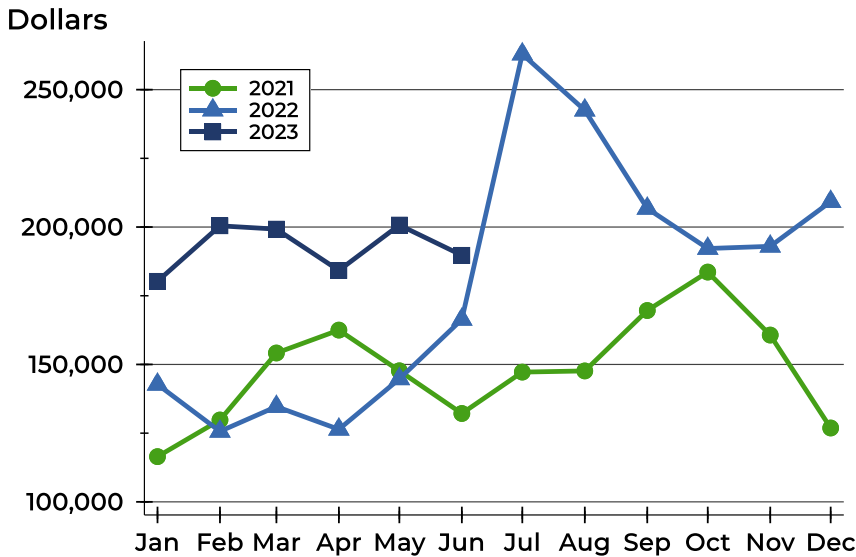
Active Listings by Price Range

Price Range	Active Listings		Months' Supply	List Price		Days on Market		Price as % of Orig.	
	Number	Percent		Average	Median	Avg.	Med.	Avg.	Med.
Below \$25,000	0	0.0%	N/A	N/A	N/A	N/A	N/A	N/A	N/A
\$25,000-\$49,999	1	5.9%	N/A	35,000	35,000	47	47	89.7%	89.7%
\$50,000-\$99,999	4	23.5%	3.4	92,700	91,000	199	84	91.5%	98.4%
\$100,000-\$124,999	0	0.0%	0.0	N/A	N/A	N/A	N/A	N/A	N/A
\$125,000-\$149,999	3	17.6%	2.2	146,233	149,900	38	43	100.0%	100.0%
\$150,000-\$174,999	1	5.9%	0.9	170,000	170,000	42	42	100.0%	100.0%
\$175,000-\$199,999	2	11.8%	3.0	178,500	178,500	39	39	99.9%	99.9%
\$200,000-\$249,999	5	29.4%	5.0	240,760	239,900	21	11	100.0%	100.0%
\$250,000-\$299,999	0	0.0%	N/A	N/A	N/A	N/A	N/A	N/A	N/A
\$300,000-\$399,999	0	0.0%	0.0	N/A	N/A	N/A	N/A	N/A	N/A
\$400,000-\$499,999	0	0.0%	N/A	N/A	N/A	N/A	N/A	N/A	N/A
\$500,000-\$749,999	1	5.9%	1.0	650,000	650,000	373	373	56.5%	56.5%
\$750,000-\$999,999	0	0.0%	N/A	N/A	N/A	N/A	N/A	N/A	N/A
\$1,000,000 and up	0	0.0%	N/A	N/A	N/A	N/A	N/A	N/A	N/A



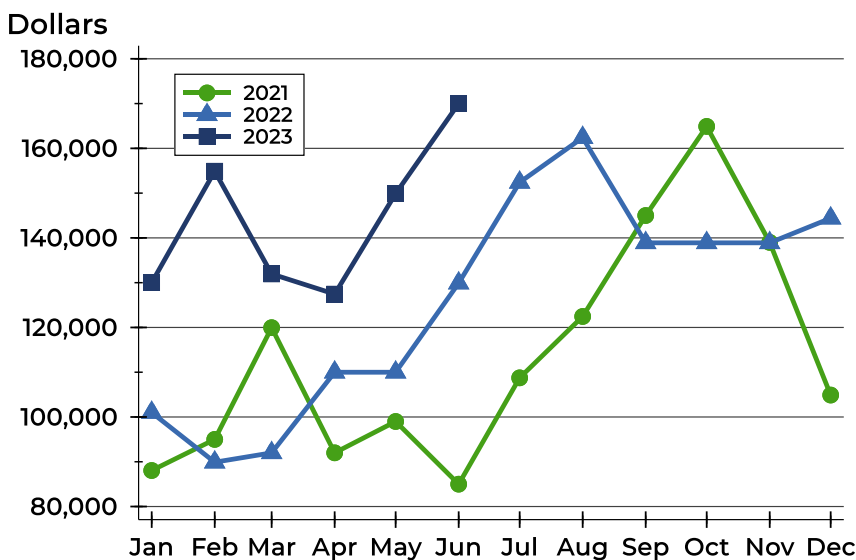
Clay County Active Listings Analysis

Average Price



Month	2021	2022	2023
January	116,461	142,744	180,259
February	129,794	125,646	200,458
March	154,172	134,664	199,250
April	162,509	126,391	184,211
May	147,694	144,744	200,736
June	132,164	166,393	189,724
July	147,225	262,917	
August	147,650	242,500	
September	169,635	206,781	
October	183,625	192,191	
November	160,695	192,990	
December	126,888	209,250	

Median Price

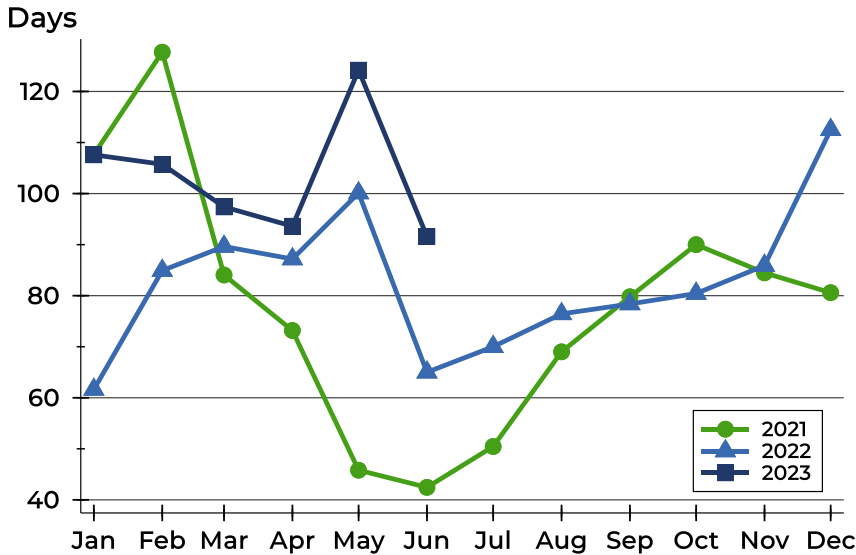


Month	2021	2022	2023
January	88,050	101,000	130,000
February	95,000	89,900	154,900
March	119,950	92,000	131,950
April	92,000	110,000	127,450
May	99,000	110,000	149,900
June	85,000	129,900	170,000
July	108,750	152,400	
August	122,450	162,400	
September	145,000	138,900	
October	164,900	138,900	
November	139,000	138,900	
December	104,900	144,400	



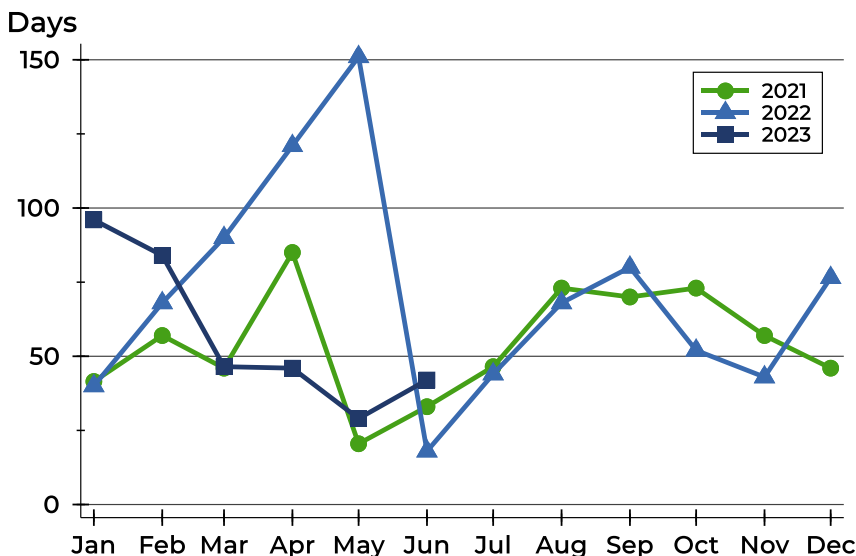
Clay County Active Listings Analysis

Average DOM



Month	2021	2022	2023
January	108	62	108
February	128	85	106
March	84	90	97
April	73	87	94
May	46	100	124
June	42	65	92
July	50	70	
August	69	76	
September	80	78	
October	90	80	
November	84	86	
December	81	113	

Median DOM

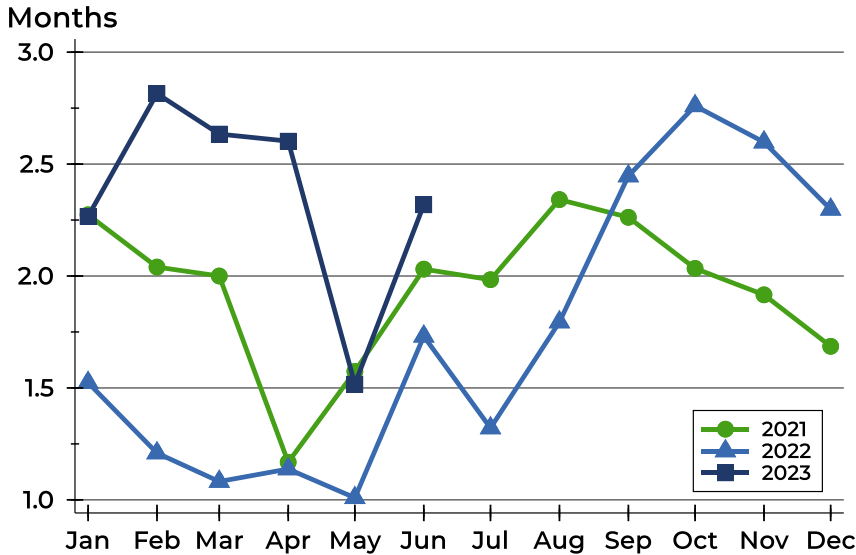


Month	2021	2022	2023
January	42	40	96
February	57	68	84
March	46	90	47
April	85	121	46
May	21	151	29
June	33	18	42
July	47	44	
August	73	68	
September	70	80	
October	73	52	
November	57	43	
December	46	77	



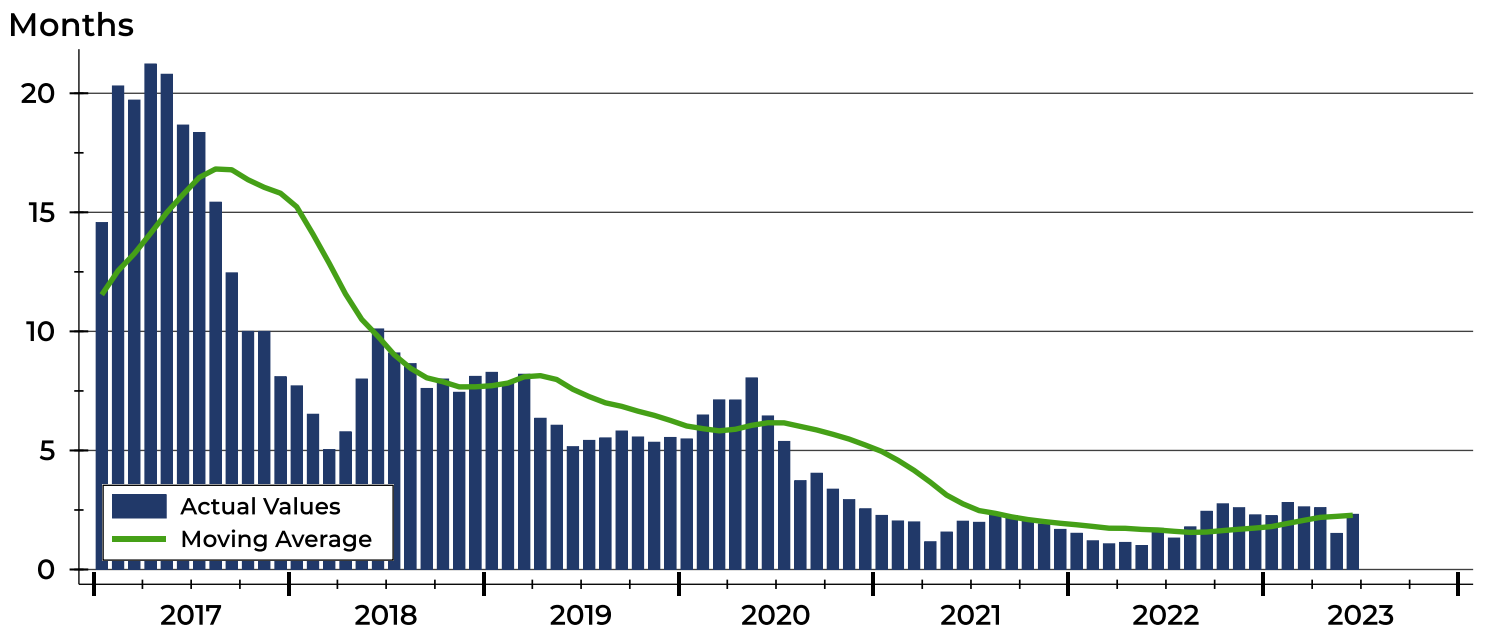
Clay County Months' Supply Analysis

Months' Supply by Month



Month	2021	2022	2023
January	2.3	1.5	2.3
February	2.0	1.2	2.8
March	2.0	1.1	2.6
April	1.2	1.1	2.6
May	1.6	1.0	1.5
June	2.0	1.7	2.3
July	2.0	1.3	2.0
August	2.3	1.8	2.3
September	2.3	2.4	2.3
October	2.0	2.8	2.0
November	1.9	2.6	1.9
December	1.7	2.3	1.7

History of Month's Supply





Clay County New Listings Analysis

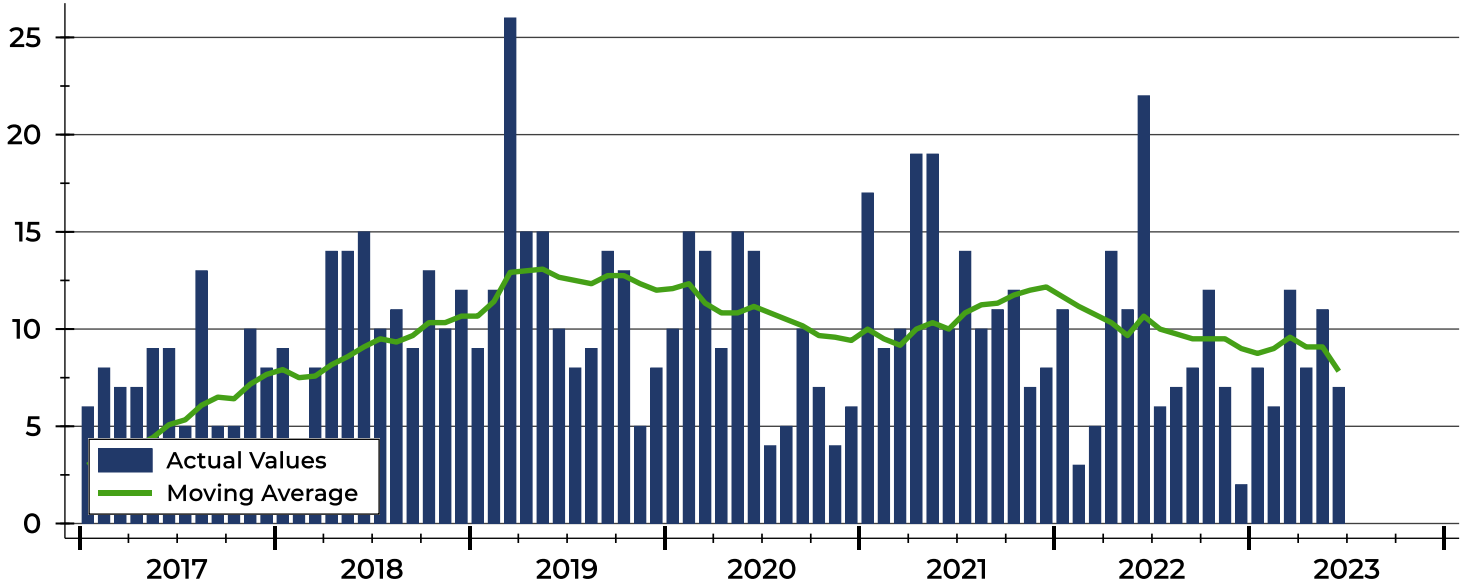
Summary Statistics for New Listings		2023	June 2022	Change
Current Month	New Listings	7	22	-68.2%
	Volume (1,000s)	1,345	4,059	-66.9%
	Average List Price	192,100	184,486	4.1%
	Median List Price	230,000	146,450	57.1%
Year-to-Date	New Listings	52	66	-21.2%
	Volume (1,000s)	9,572	10,926	-12.4%
	Average List Price	184,081	165,552	11.2%
	Median List Price	172,500	129,450	33.3%

A total of 7 new listings were added in Clay County during June, down 68.2% from the same month in 2022. Year-to-date Clay County has seen 52 new listings.

The median list price of these homes was \$230,000 up from \$146,450 in 2022.

History of New Listings

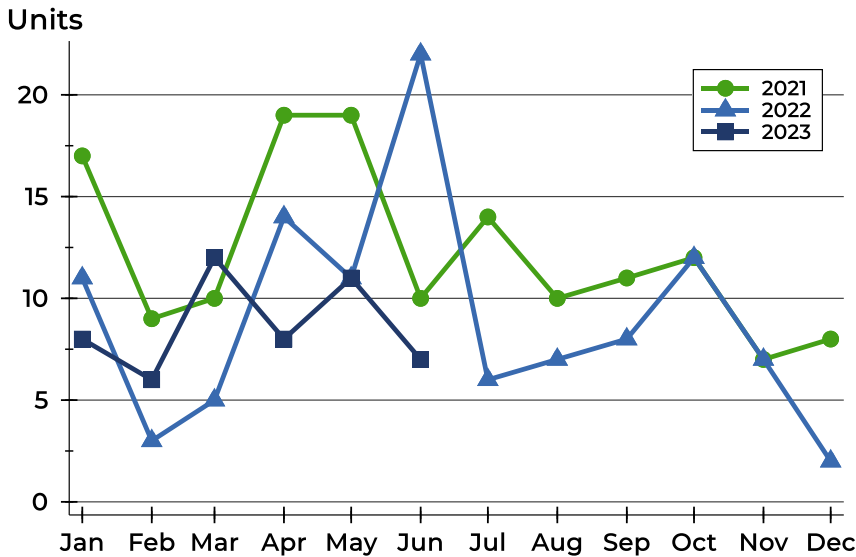
Units





Clay County New Listings Analysis

New Listings by Month



Month	2021	2022	2023
January	17	11	8
February	9	3	6
March	10	5	12
April	19	14	8
May	19	11	11
June	10	22	7
July	14	6	
August	10	7	
September	11	8	
October	12	12	
November	7	7	
December	8	2	

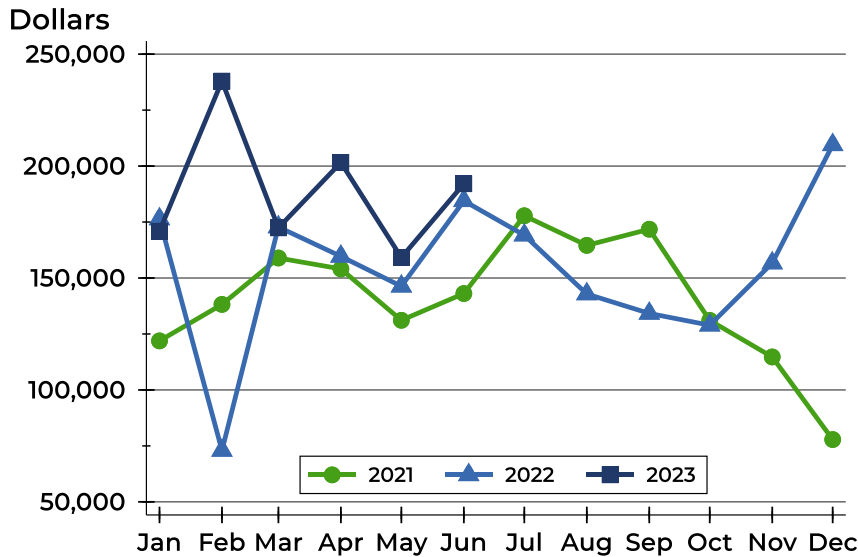
New Listings by Price Range

Price Range	New Listings		List Price		Days on Market		Price as % of Orig.	
	Number	Percent	Average	Median	Avg.	Med.	Avg.	Med.
Below \$25,000	0	0.0%	N/A	N/A	N/A	N/A	N/A	N/A
\$25,000-\$49,999	0	0.0%	N/A	N/A	N/A	N/A	N/A	N/A
\$50,000-\$99,999	1	14.3%	89,900	89,900	22	22	100.0%	100.0%
\$100,000-\$124,999	0	0.0%	N/A	N/A	N/A	N/A	N/A	N/A
\$125,000-\$149,999	1	14.3%	125,000	125,000	8	8	100.0%	100.0%
\$150,000-\$174,999	0	0.0%	N/A	N/A	N/A	N/A	N/A	N/A
\$175,000-\$199,999	1	14.3%	175,000	175,000	29	29	100.0%	100.0%
\$200,000-\$249,999	4	57.1%	238,700	237,450	16	19	100.0%	100.0%
\$250,000-\$299,999	0	0.0%	N/A	N/A	N/A	N/A	N/A	N/A
\$300,000-\$399,999	0	0.0%	N/A	N/A	N/A	N/A	N/A	N/A
\$400,000-\$499,999	0	0.0%	N/A	N/A	N/A	N/A	N/A	N/A
\$500,000-\$749,999	0	0.0%	N/A	N/A	N/A	N/A	N/A	N/A
\$750,000-\$999,999	0	0.0%	N/A	N/A	N/A	N/A	N/A	N/A
\$1,000,000 and up	0	0.0%	N/A	N/A	N/A	N/A	N/A	N/A



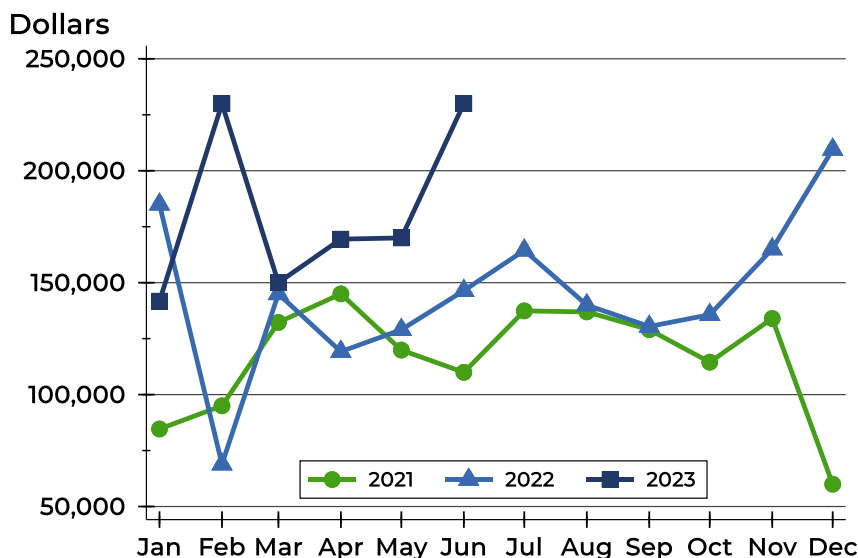
Clay County New Listings Analysis

Average Price



Month	2021	2022	2023
January	121,915	176,355	170,925
February	138,211	72,967	237,967
March	158,940	172,780	172,400
April	154,063	159,679	201,613
May	131,111	146,318	159,145
June	143,060	184,486	192,100
July	177,814	169,150	
August	164,590	142,871	
September	171,791	134,188	
October	131,066	128,917	
November	114,743	156,671	
December	77,838	209,500	

Median Price



Month	2021	2022	2023
January	84,650	185,000	141,750
February	95,000	68,900	229,950
March	132,250	145,000	150,000
April	145,000	119,200	169,450
May	119,900	129,000	170,000
June	109,950	146,450	230,000
July	137,400	164,450	
August	136,950	140,000	
September	129,000	130,450	
October	114,500	135,700	
November	134,000	165,000	
December	60,000	209,500	



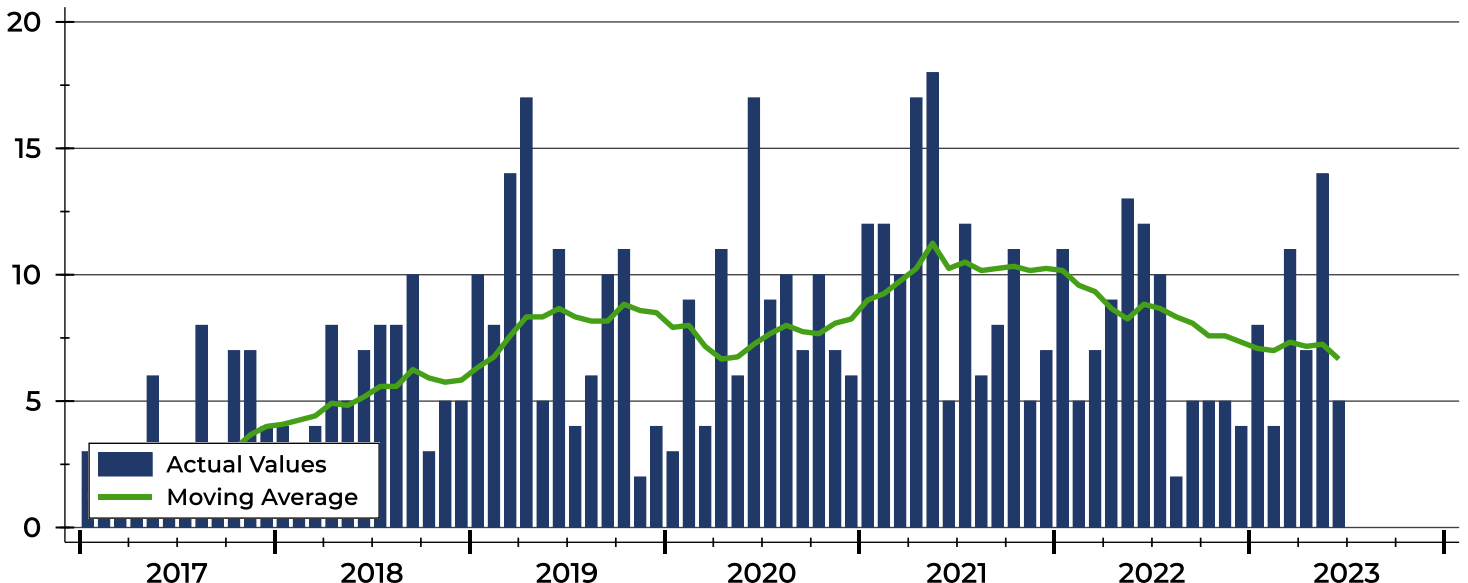
Clay County Contracts Written Analysis

Summary Statistics for Contracts Written		2023	June 2022	Change	Year-to-Date		
		2023	2022		2023	2022	Change
Contracts Written		5	12	-58.3%	49	57	-14.0%
Volume (1,000s)		1,024	1,718	-40.4%	9,045	8,256	9.6%
Average	Sale Price	204,780	143,133	43.1%	184,590	144,839	27.4%
	Days on Market	60	22	172.7%	59	43	37.2%
	Percent of Original	95.2%	96.4%	-1.2%	93.2%	94.1%	-1.0%
Median	Sale Price	179,900	138,500	29.9%	169,900	129,000	31.7%
	Days on Market	46	8	475.0%	37	18	105.6%
	Percent of Original	95.8%	97.3%	-1.5%	95.2%	94.9%	0.3%

A total of 5 contracts for sale were written in Clay County during the month of June, down from 12 in 2022. The median list price of these homes was \$179,900, up from \$138,500 the prior year. Half of the homes that went under contract in June were on the market less than 46 days, compared to 8 days in June 2022.

History of Contracts Written

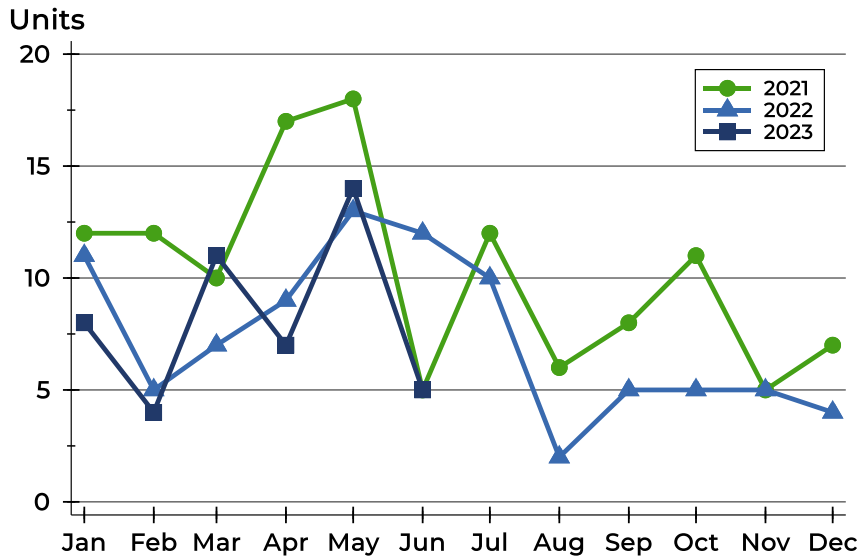
Units





Clay County Contracts Written Analysis

Contracts Written by Month



Month	2021	2022	2023
January	12	11	8
February	12	5	4
March	10	7	11
April	17	9	7
May	18	13	14
June	5	12	5
July	12	10	
August	6	2	
September	8	5	
October	11	5	
November	5	5	
December	7	4	

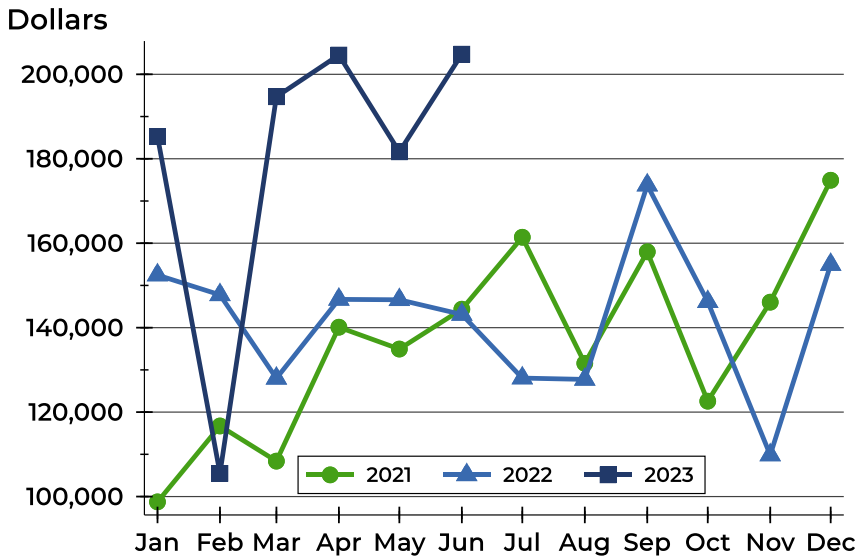
Contracts Written by Price Range

Price Range	Contracts Written		List Price		Days on Market		Price as % of Orig.	
	Number	Percent	Average	Median	Avg.	Med.	Avg.	Med.
Below \$25,000	0	0.0%	N/A	N/A	N/A	N/A	N/A	N/A
\$25,000-\$49,999	0	0.0%	N/A	N/A	N/A	N/A	N/A	N/A
\$50,000-\$99,999	0	0.0%	N/A	N/A	N/A	N/A	N/A	N/A
\$100,000-\$124,999	0	0.0%	N/A	N/A	N/A	N/A	N/A	N/A
\$125,000-\$149,999	2	40.0%	135,000	135,000	34	34	97.6%	97.6%
\$150,000-\$174,999	0	0.0%	N/A	N/A	N/A	N/A	N/A	N/A
\$175,000-\$199,999	1	20.0%	179,900	179,900	46	46	99.2%	99.2%
\$200,000-\$249,999	0	0.0%	N/A	N/A	N/A	N/A	N/A	N/A
\$250,000-\$299,999	2	40.0%	287,000	287,000	94	94	90.9%	90.9%
\$300,000-\$399,999	0	0.0%	N/A	N/A	N/A	N/A	N/A	N/A
\$400,000-\$499,999	0	0.0%	N/A	N/A	N/A	N/A	N/A	N/A
\$500,000-\$749,999	0	0.0%	N/A	N/A	N/A	N/A	N/A	N/A
\$750,000-\$999,999	0	0.0%	N/A	N/A	N/A	N/A	N/A	N/A
\$1,000,000 and up	0	0.0%	N/A	N/A	N/A	N/A	N/A	N/A



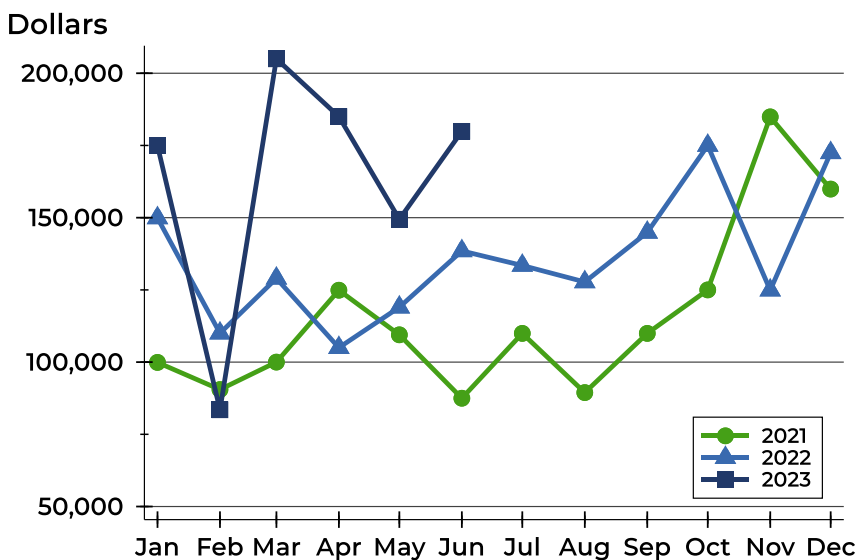
Clay County Contracts Written Analysis

Average Price



Month	2021	2022	2023
January	98,742	152,464	185,300
February	116,721	147,780	105,500
March	108,390	128,000	194,691
April	140,112	146,700	204,571
May	134,933	146,608	181,643
June	144,380	143,133	204,780
July	161,417	128,060	
August	131,567	127,750	
September	157,963	173,760	
October	122,590	146,140	
November	146,040	109,840	
December	174,914	154,950	

Median Price

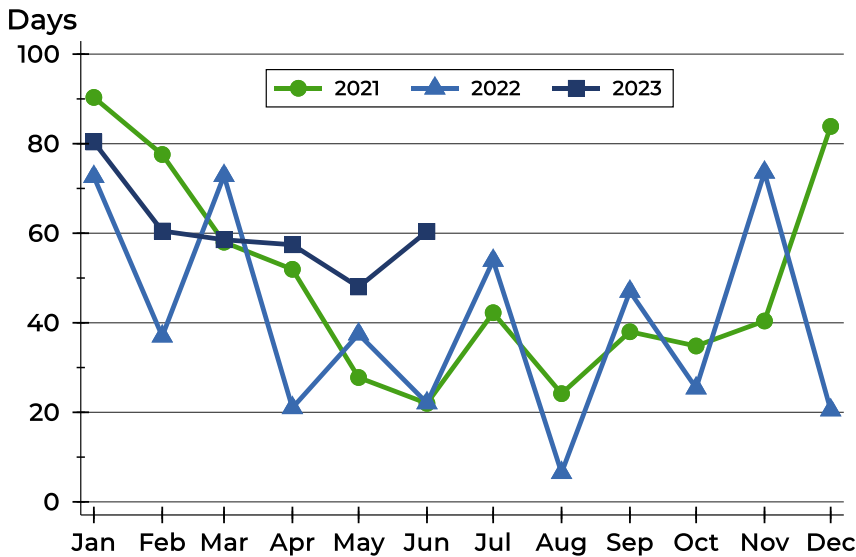


Month	2021	2022	2023
January	99,900	149,900	174,950
February	90,500	110,000	83,500
March	100,000	129,000	205,000
April	124,900	105,000	185,000
May	109,450	119,000	149,450
June	87,500	138,500	179,900
July	109,950	133,450	
August	89,450	127,750	
September	109,950	144,900	
October	125,000	175,000	
November	184,900	124,900	
December	159,900	172,450	



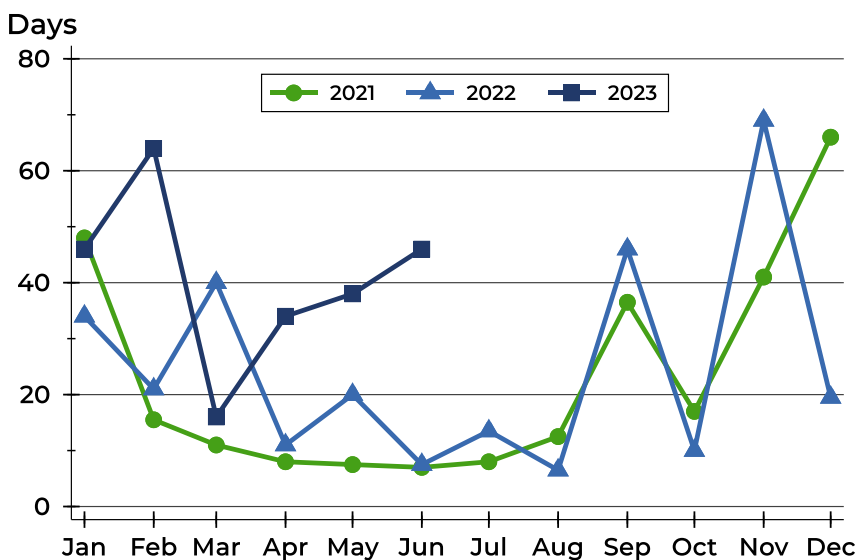
Clay County Contracts Written Analysis

Average DOM



Month	2021	2022	2023
January	90	73	80
February	78	37	61
March	58	73	59
April	52	21	57
May	28	37	48
June	22	22	60
July	42	54	
August	24	7	
September	38	47	
October	35	25	
November	40	74	
December	84	21	

Median DOM



Month	2021	2022	2023
January	48	34	46
February	16	21	64
March	11	40	16
April	8	11	34
May	8	20	38
June	7	8	46
July	8	14	
August	13	7	
September	37	46	
October	17	10	
November	41	69	
December	66	20	



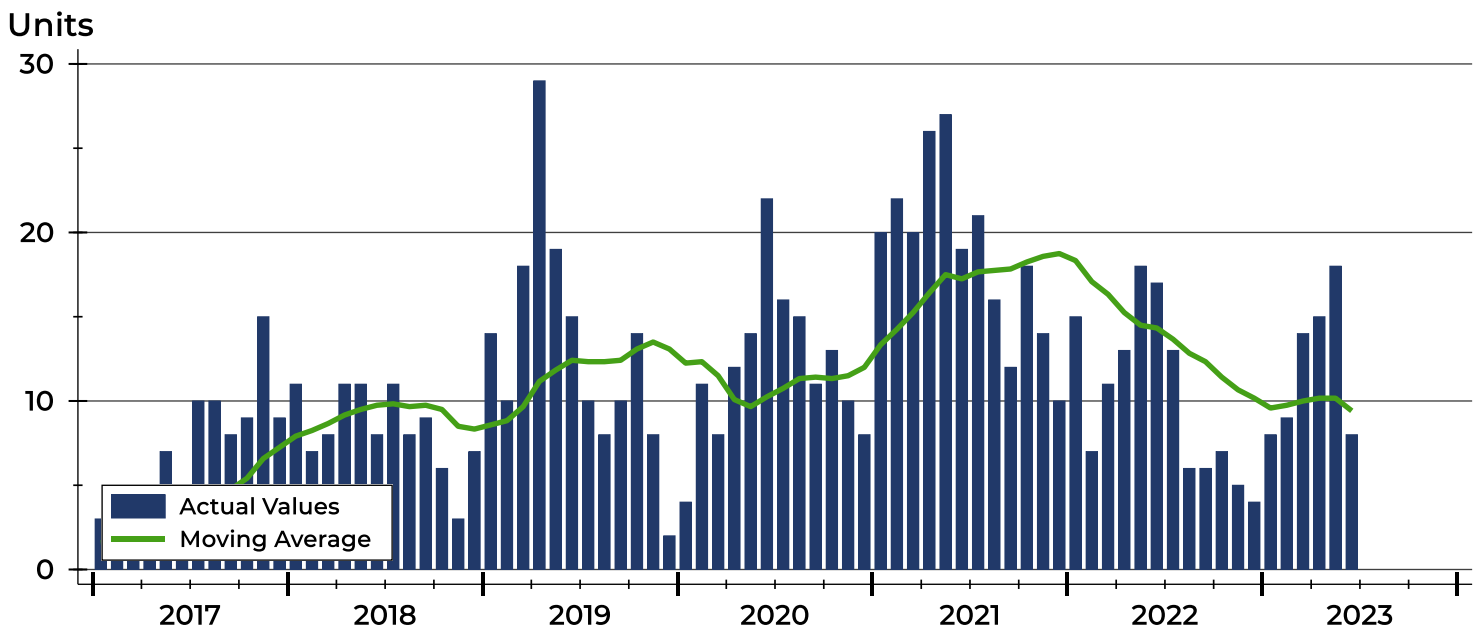
Clay County Pending Contracts Analysis

Summary Statistics for Pending Contracts		2023	End of June 2022	Change
Pending Contracts		8	17	-52.9%
Volume (1,000s)		1,529	2,950	-48.2%
Average	List Price	191,100	173,524	10.1%
	Days on Market	68	37	83.8%
	Percent of Original	93.5%	98.6%	-5.2%
Median	List Price	184,900	148,000	24.9%
	Days on Market	42	9	366.7%
	Percent of Original	97.9%	100.0%	-2.1%

A total of 8 listings in Clay County had contracts pending at the end of June, down from 17 contracts pending at the end of June 2022.

Pending contracts reflect listings with a contract in place at the end of the month. In contrast, contracts written measures the number of listings put under contract during the month.

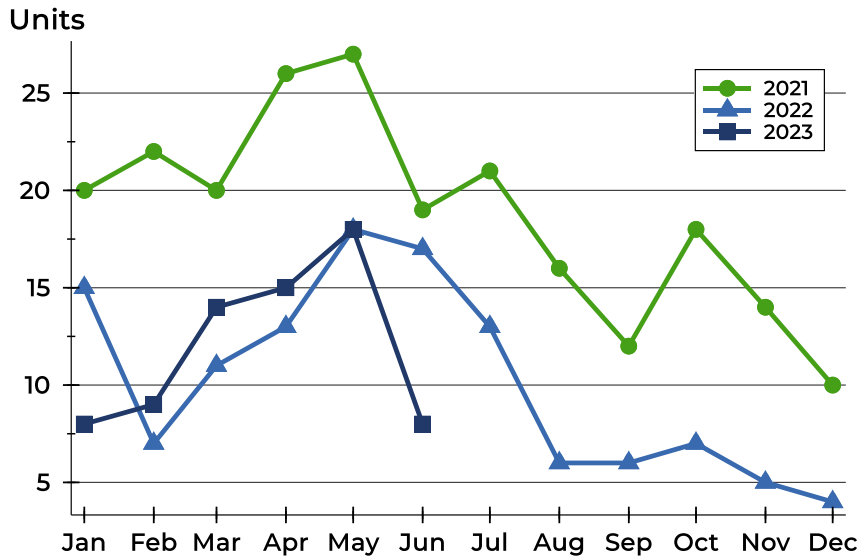
History of Pending Contracts





Clay County Pending Contracts Analysis

Pending Contracts by Month



Month	2021	2022	2023
January	20	15	8
February	22	7	9
March	20	11	14
April	26	13	15
May	27	18	18
June	19	17	8
July	21	13	
August	16	6	
September	12	6	
October	18	7	
November	14	5	
December	10	4	

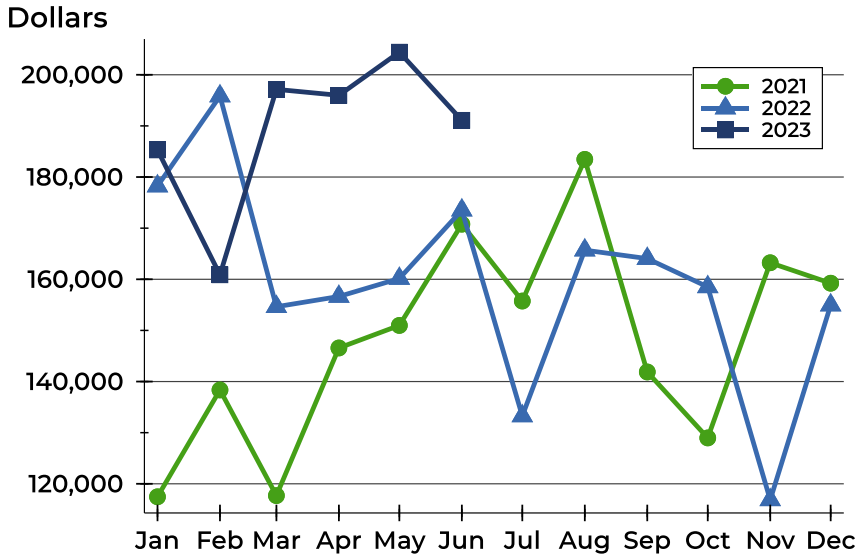
Pending Contracts by Price Range

Price Range	Pending Contracts		List Price		Days on Market		Price as % of Orig.	
	Number	Percent	Average	Median	Avg.	Med.	Avg.	Med.
Below \$25,000	0	0.0%	N/A	N/A	N/A	N/A	N/A	N/A
\$25,000-\$49,999	0	0.0%	N/A	N/A	N/A	N/A	N/A	N/A
\$50,000-\$99,999	0	0.0%	N/A	N/A	N/A	N/A	N/A	N/A
\$100,000-\$124,999	2	25.0%	110,000	110,000	110	110	85.7%	85.7%
\$125,000-\$149,999	1	12.5%	125,000	125,000	8	8	100.0%	100.0%
\$150,000-\$174,999	1	12.5%	169,900	169,900	39	39	94.4%	94.4%
\$175,000-\$199,999	1	12.5%	199,900	199,900	7	7	100.0%	100.0%
\$200,000-\$249,999	1	12.5%	240,000	240,000	81	81	100.0%	100.0%
\$250,000-\$299,999	2	25.0%	287,000	287,000	94	94	90.9%	90.9%
\$300,000-\$399,999	0	0.0%	N/A	N/A	N/A	N/A	N/A	N/A
\$400,000-\$499,999	0	0.0%	N/A	N/A	N/A	N/A	N/A	N/A
\$500,000-\$749,999	0	0.0%	N/A	N/A	N/A	N/A	N/A	N/A
\$750,000-\$999,999	0	0.0%	N/A	N/A	N/A	N/A	N/A	N/A
\$1,000,000 and up	0	0.0%	N/A	N/A	N/A	N/A	N/A	N/A



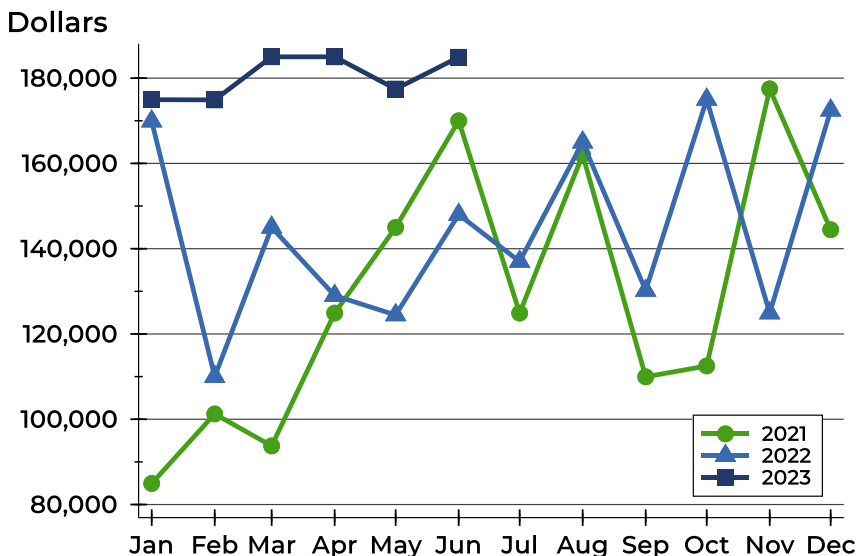
Clay County Pending Contracts Analysis

Average Price



Month	2021	2022	2023
January	117,463	178,233	185,300
February	138,357	195,843	160,878
March	117,703	154,636	197,150
April	146,569	156,638	195,980
May	150,981	160,156	204,428
June	170,784	173,524	191,100
July	155,752	133,269	
August	183,456	165,700	
September	141,875	164,050	
October	128,977	158,514	
November	163,235	116,860	
December	159,239	154,950	

Median Price

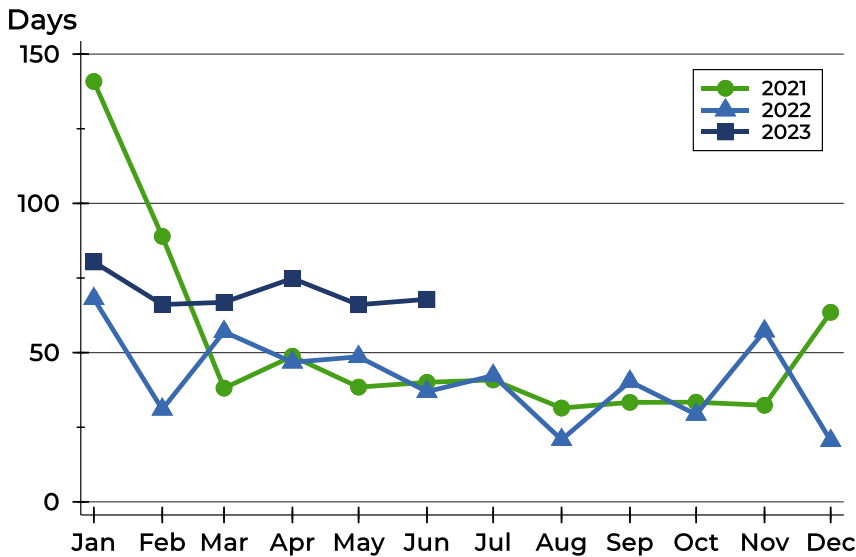


Month	2021	2022	2023
January	84,950	169,900	174,950
February	101,250	110,000	174,900
March	93,750	145,000	185,000
April	124,900	129,000	185,000
May	145,000	124,450	177,450
June	170,000	148,000	184,900
July	124,900	137,000	
August	162,000	164,950	
September	109,950	130,200	
October	112,500	175,000	
November	177,495	124,900	
December	144,450	172,450	



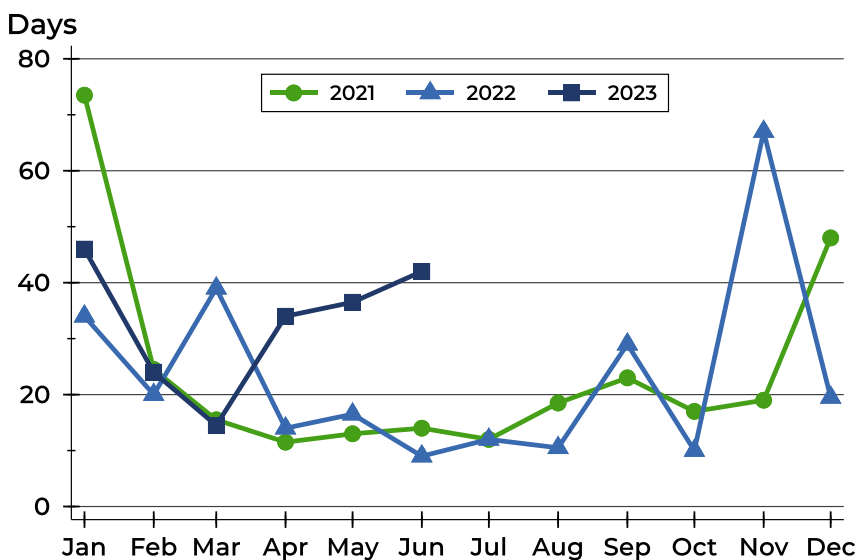
Clay County Pending Contracts Analysis

Average DOM



Month	2021	2022	2023
January	141	68	80
February	89	31	66
March	38	57	67
April	49	47	75
May	38	49	66
June	40	37	68
July	41	42	
August	31	21	
September	33	40	
October	33	29	
November	32	57	
December	64	21	

Median DOM



Month	2021	2022	2023
January	74	34	46
February	25	20	24
March	16	39	15
April	12	14	34
May	13	17	37
June	14	9	42
July	12	12	
August	19	11	
September	23	29	
October	17	10	
November	19	67	
December	48	20	