



**May
2026**

Flint Hills MLS Statistics



**FLINT HILLS
ASSOCIATION
OF REALTORS®**

Clay County Housing Report



Market Overview

Clay County Home Sales Rose in May

Total home sales in Clay County rose by 25.0% last month to 15 units, compared to 12 units in May 2025. Total sales volume was \$3.3 million, up 52.9% from a year earlier.

The median sale price in May was \$200,000, up from \$163,500 a year earlier. Homes that sold in May were typically on the market for 31 days and sold for 100.0% of their list prices.

Clay County Active Listings Down at End of May

The total number of active listings in Clay County at the end of May was 17 units, down from 20 at the same point in 2025. This represents a 2.1 months' supply of homes available for sale. The median list price of homes on the market at the end of May was \$249,000.

During May, a total of 9 contracts were written down from 10 in May 2025. At the end of the month, there were 8 contracts still pending.

Report Contents

- Summary Statistics – Page 2
- Closed Listing Analysis – Page 3
- Active Listings Analysis – Page 7
- Months' Supply Analysis – Page 11
- New Listings Analysis – Page 12
- Contracts Written Analysis – Page 15
- Pending Contracts Analysis – Page 19

Contact Information

Margaret Rezek, Association Executive
 Flint Hills Association of REALTORS®
 205 S. Seth Child Road
 Manhattan, KS 66502
 785-776-1203
ae@flinthillsrealtors.net
www.flinthillsrealtors.net



**May
2026**

Flint Hills MLS Statistics



**FLINT HILLS
ASSOCIATION
OF REALTORS®**

Clay County Summary Statistics

May MLS Statistics Three-year History		Current Month			Year-to-Date		
		2026	2025	2024	2026	2025	2024
Home Sales		15	12	11	43	33	37
Change from prior year		25.0%	9.1%	0.0%	30.3%	-10.8%	15.6%
Active Listings		17	20	11	N/A	N/A	N/A
Change from prior year		-15.0%	81.8%	37.5%			
Months' Supply		2.1	3.6	1.4	N/A	N/A	N/A
Change from prior year		-41.7%	157.1%	27.3%			
New Listings		9	13	8	47	47	41
Change from prior year		-30.8%	62.5%	-27.3%	0.0%	14.6%	-8.9%
Contracts Written		9	10	8	46	40	40
Change from prior year		-10.0%	25.0%	-42.9%	15.0%	0.0%	-9.1%
Pending Contracts		8	13	9	N/A	N/A	N/A
Change from prior year		-38.5%	44.4%	-50.0%			
Sales Volume (1,000s)		3,298	2,157	1,847	9,015	6,334	5,726
Change from prior year		52.9%	16.8%	12.3%	42.3%	10.6%	11.0%
Average	Sale Price	219,869	179,783	167,950	209,640	191,942	154,769
	Change from prior year	22.3%	7.0%	12.4%	9.2%	24.0%	-4.0%
	List Price of Actives	235,512	250,575	257,482	N/A	N/A	N/A
	Change from prior year	-6.0%	-2.7%	9.7%			
	Days on Market	70	27	104	66	59	65
Change from prior year	159.3%	-74.0%	76.3%	11.9%	-9.2%	32.7%	
	Percent of List	96.7%	95.7%	93.5%	95.3%	96.8%	94.0%
Change from prior year	1.0%	2.4%	-1.7%	-1.5%	3.0%	-0.7%	
	Percent of Original	93.9%	94.3%	88.3%	92.8%	94.8%	91.1%
Change from prior year	-0.4%	6.8%	-6.9%	-2.1%	4.1%	-3.2%	
Median	Sale Price	200,000	163,500	157,400	180,000	170,000	127,500
	Change from prior year	22.3%	3.9%	23.9%	5.9%	33.3%	-21.2%
	List Price of Actives	249,000	231,250	204,900	N/A	N/A	N/A
	Change from prior year	7.7%	12.9%	13.1%			
	Days on Market	31	5	30	34	39	25
Change from prior year	520.0%	-83.3%	-21.1%	-12.8%	56.0%	13.6%	
	Percent of List	100.0%	99.5%	97.7%	97.3%	99.7%	96.0%
Change from prior year	0.5%	1.8%	3.3%	-2.4%	3.9%	-0.9%	
	Percent of Original	97.6%	99.5%	90.9%	95.4%	96.6%	92.3%
Change from prior year	-1.9%	9.5%	-3.9%	-1.2%	4.7%	-2.9%	

Note: Year-to-date statistics cannot be calculated for Active Listings, Months' Supply and Pending Contracts.



**May
2026**

Flint Hills MLS Statistics



**FLINT HILLS
ASSOCIATION
OF REALTORS®**

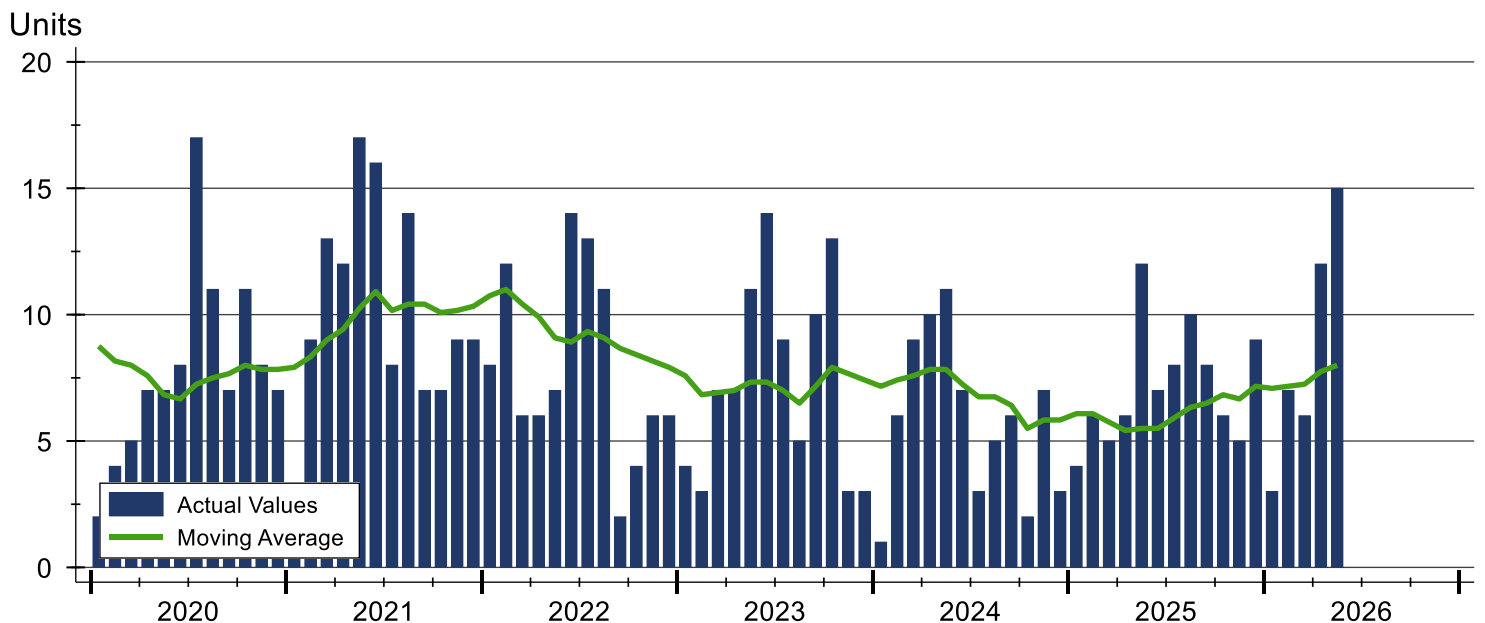
Clay County Closed Listings Analysis

Summary Statistics for Closed Listings		2026	May 2025	Change	2026	Year-to-Date 2025	Change
Closed Listings		15	12	25.0%	43	33	30.3%
Volume (1,000s)		3,298	2,157	52.9%	9,015	6,334	42.3%
Months' Supply		2.1	3.6	-41.7%	N/A	N/A	N/A
Average	Sale Price	219,869	179,783	22.3%	209,640	191,942	9.2%
	Days on Market	70	27	159.3%	66	59	11.9%
	Percent of List	96.7%	95.7%	1.0%	95.3%	96.8%	-1.5%
	Percent of Original	93.9%	94.3%	-0.4%	92.8%	94.8%	-2.1%
Median	Sale Price	200,000	163,500	22.3%	180,000	170,000	5.9%
	Days on Market	31	5	520.0%	34	39	-12.8%
	Percent of List	100.0%	99.5%	0.5%	97.3%	99.7%	-2.4%
	Percent of Original	97.6%	99.5%	-1.9%	95.4%	96.6%	-1.2%

A total of 15 homes sold in Clay County in May, up from 12 units in May 2025. Total sales volume rose to \$3.3 million compared to \$2.2 million in the previous year.

The median sales price in May was \$200,000, up 22.3% compared to the prior year. Median days on market was 31 days, up from 18 days in April, and up from 4 in May 2025.

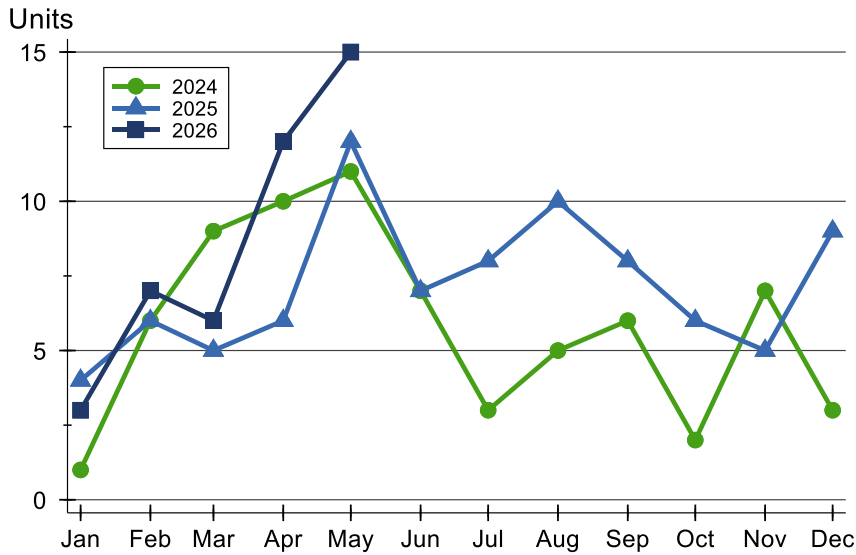
History of Closed Listings





Clay County Closed Listings Analysis

Closed Listings by Month



Month	2024	2025	2026
January	1	4	3
February	6	6	7
March	9	5	6
April	10	6	12
May	11	12	15
June	7	7	7
July	3	8	3
August	5	10	5
September	6	8	6
October	2	6	2
November	7	5	7
December	3	9	3

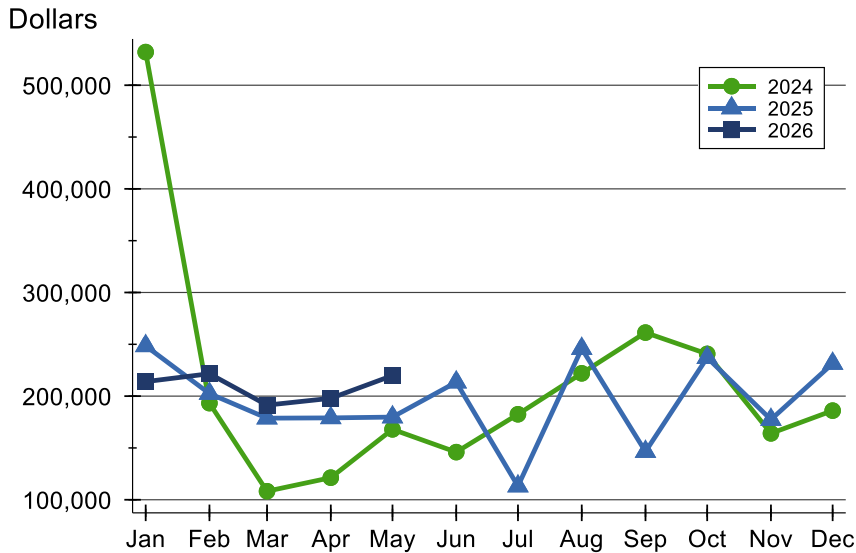
Closed Listings by Price Range

Price Range	Sales		Months' Supply	Sale Price		Days on Market		Price as % of List		Price as % of Orig.	
	Number	Percent		Average	Median	Avg.	Med.	Avg.	Med.	Avg.	Med.
Below \$25,000	0	0.0%	N/A	N/A	N/A	N/A	N/A	N/A	N/A	N/A	N/A
\$25,000-\$49,999	0	0.0%	N/A	N/A	N/A	N/A	N/A	N/A	N/A	N/A	N/A
\$50,000-\$99,999	0	0.0%	N/A	N/A	N/A	N/A	N/A	N/A	N/A	N/A	N/A
\$100,000-\$124,999	1	6.7%	0.0	100,000	100,000	0	0	100.0%	100.0%	100.0%	100.0%
\$125,000-\$149,999	2	13.3%	3.3	132,500	132,500	61	61	91.7%	91.7%	85.4%	85.4%
\$150,000-\$174,999	0	0.0%	N/A	N/A	N/A	N/A	N/A	N/A	N/A	N/A	N/A
\$175,000-\$199,999	4	26.7%	0.0	180,508	180,000	69	48	92.5%	92.1%	88.8%	87.5%
\$200,000-\$249,999	4	26.7%	3.2	217,500	220,000	90	62	100.0%	100.0%	96.5%	98.8%
\$250,000-\$299,999	2	13.3%	4.6	255,000	255,000	123	123	98.6%	98.6%	98.6%	98.6%
\$300,000-\$399,999	1	6.7%	5.1	324,000	324,000	31	31	98.5%	98.5%	98.5%	98.5%
\$400,000-\$499,999	0	0.0%	N/A	N/A	N/A	N/A	N/A	N/A	N/A	N/A	N/A
\$500,000-\$749,999	1	6.7%	0.0	507,000	507,000	11	11	101.4%	101.4%	101.4%	101.4%
\$750,000-\$999,999	0	0.0%	N/A	N/A	N/A	N/A	N/A	N/A	N/A	N/A	N/A
\$1,000,000 and up	0	0.0%	N/A	N/A	N/A	N/A	N/A	N/A	N/A	N/A	N/A



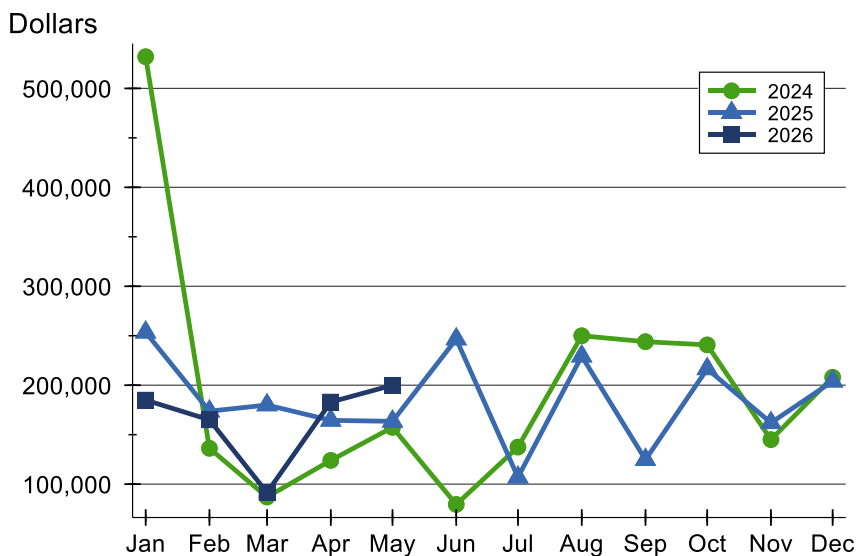
Clay County Closed Listings Analysis

Average Price



Month	2024	2025	2026
January	532,000	248,500	214,000
February	193,250	202,500	221,643
March	108,244	178,740	191,333
April	121,330	179,000	197,917
May	167,950	179,783	219,869
June	145,977	213,450	
July	182,500	113,175	
August	222,000	245,850	
September	261,333	146,488	
October	240,750	237,167	
November	164,071	177,400	
December	186,000	231,444	

Median Price

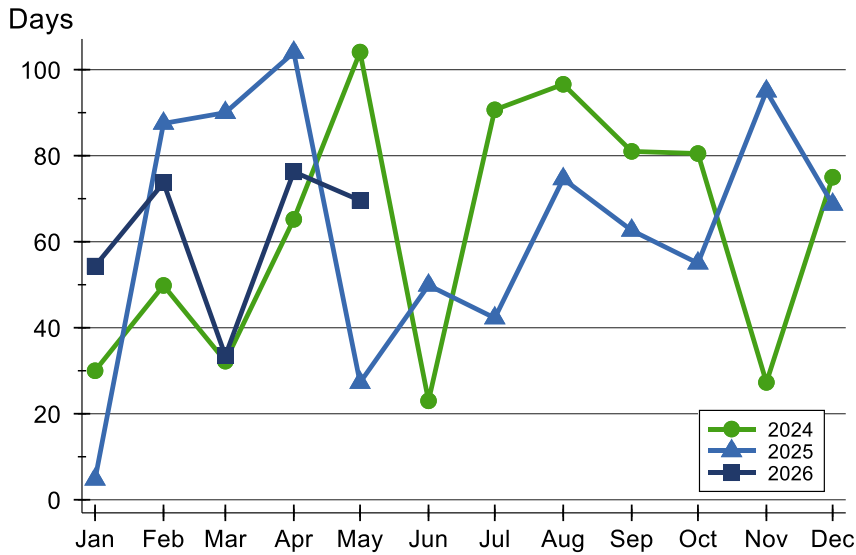


Month	2024	2025	2026
January	532,000	253,500	185,000
February	136,250	173,750	165,000
March	87,000	180,000	91,500
April	124,000	164,500	183,000
May	157,400	163,500	200,000
June	79,500	246,650	
July	137,500	106,950	
August	250,000	229,350	
September	244,000	124,750	
October	240,750	216,500	
November	145,000	162,000	
December	208,000	204,000	



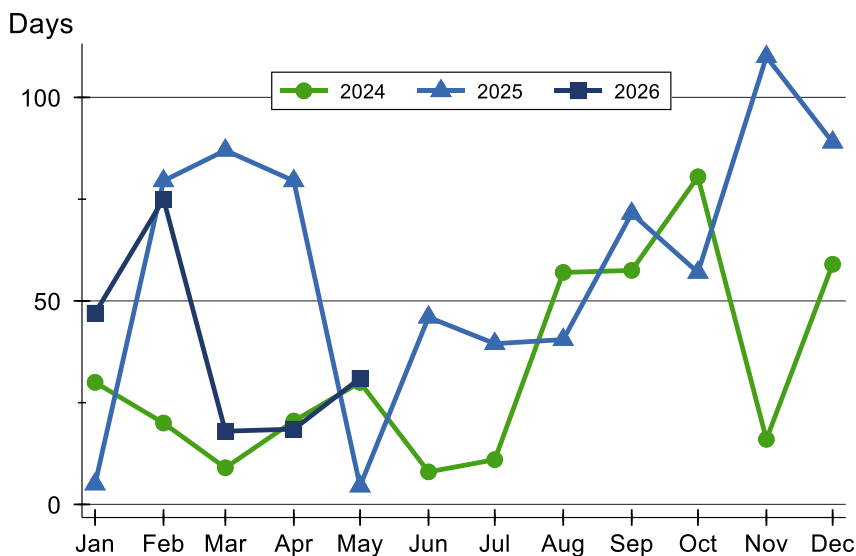
Clay County Closed Listings Analysis

Average DOM



Month	2024	2025	2026
January	30	5	54
February	50	88	74
March	32	90	34
April	65	104	76
May	104	27	70
June	23	50	
July	91	42	
August	97	75	
September	81	63	
October	81	55	
November	27	95	
December	75	69	

Median DOM



Month	2024	2025	2026
January	30	5	47
February	20	80	75
March	9	87	18
April	21	80	19
May	30	5	31
June	8	46	
July	11	40	
August	57	41	
September	58	72	
October	81	57	
November	16	110	
December	59	89	



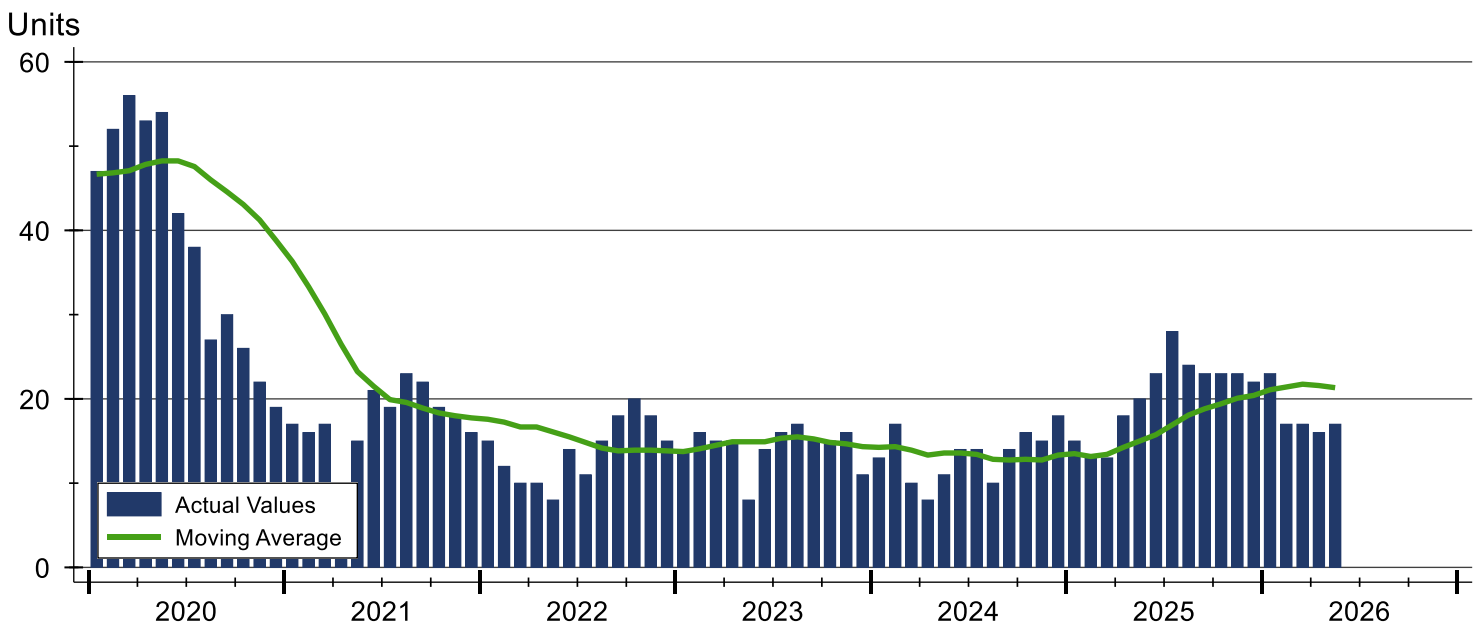
Clay County Active Listings Analysis

Summary Statistics for Active Listings		2026	End of May 2025	Change
Active Listings		17	20	-15.0%
Volume (1,000s)		4,004	5,012	-20.1%
Months' Supply		2.1	3.6	-41.7%
Average	List Price	235,512	250,575	-6.0%
	Days on Market	60	76	-21.1%
	Percent of Original	97.7%	99.1%	-1.4%
Median	List Price	249,000	231,250	7.7%
	Days on Market	16	58	-72.4%
	Percent of Original	100.0%	100.0%	0.0%

A total of 17 homes were available for sale in Clay County at the end of May. This represents a 2.1 months' supply of active listings.

The median list price of homes on the market at the end of May was \$249,000, up 7.7% from 2025. The typical time on market for active listings was 16 days, down from 58 days a year earlier.

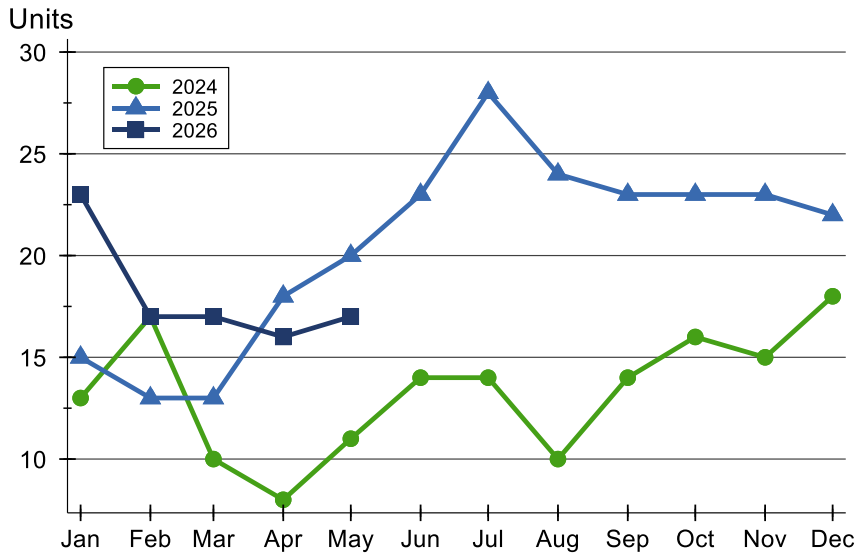
History of Active Listings





Clay County Active Listings Analysis

Active Listings by Month



Month	2024	2025	2026
January	13	15	23
February	17	13	17
March	10	13	17
April	8	18	16
May	11	20	17
June	14	23	
July	14	28	
August	10	24	
September	14	23	
October	16	23	
November	15	23	
December	18	22	

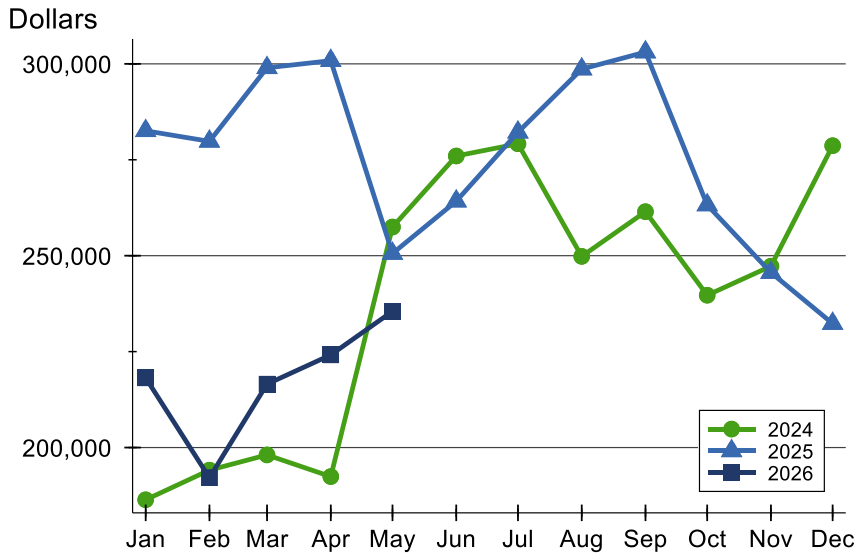
Active Listings by Price Range

Price Range	Active Listings		Months' Supply	List Price		Days on Market		Price as % of Orig.	
	Number	Percent		Average	Median	Avg.	Med.	Avg.	Med.
Below \$25,000	0	0.0%	N/A	N/A	N/A	N/A	N/A	N/A	N/A
\$25,000-\$49,999	1	5.9%	N/A	33,000	33,000	16	16	100.0%	100.0%
\$50,000-\$99,999	0	0.0%	N/A	N/A	N/A	N/A	N/A	N/A	N/A
\$100,000-\$124,999	0	0.0%	0.0	N/A	N/A	N/A	N/A	N/A	N/A
\$125,000-\$149,999	3	17.6%	3.3	133,800	135,000	6	7	100.0%	100.0%
\$150,000-\$174,999	1	5.9%	N/A	165,000	165,000	60	60	100.0%	100.0%
\$175,000-\$199,999	0	0.0%	0.0	N/A	N/A	N/A	N/A	N/A	N/A
\$200,000-\$249,999	4	23.5%	3.2	235,825	239,700	69	22	99.0%	100.0%
\$250,000-\$299,999	5	29.4%	4.6	285,600	295,000	106	46	95.7%	100.0%
\$300,000-\$399,999	3	17.6%	5.1	344,333	329,000	39	52	95.5%	94.0%
\$400,000-\$499,999	0	0.0%	N/A	N/A	N/A	N/A	N/A	N/A	N/A
\$500,000-\$749,999	0	0.0%	0.0	N/A	N/A	N/A	N/A	N/A	N/A
\$750,000-\$999,999	0	0.0%	N/A	N/A	N/A	N/A	N/A	N/A	N/A
\$1,000,000 and up	0	0.0%	N/A	N/A	N/A	N/A	N/A	N/A	N/A



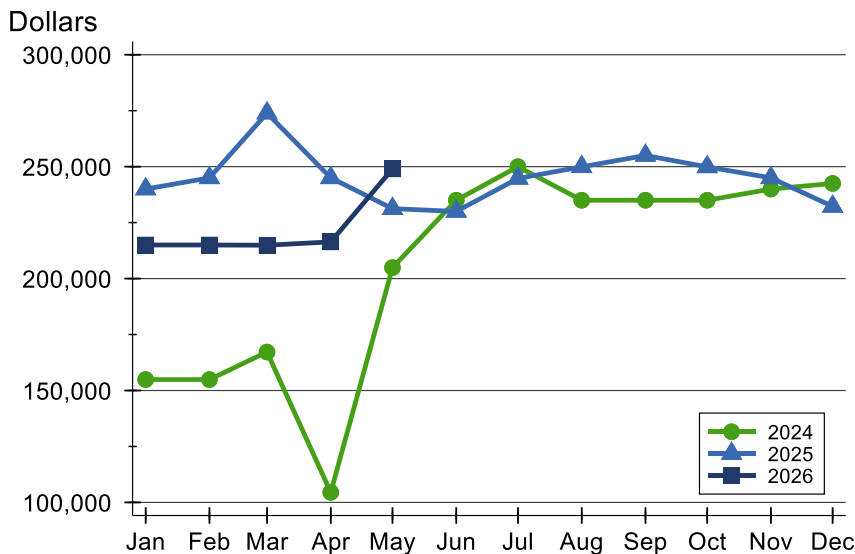
Clay County Active Listings Analysis

Average Price



Month	2024	2025	2026
January	186,392	282,560	218,157
February	194,112	279,808	192,135
March	198,080	298,977	216,535
April	192,438	300,839	224,150
May	257,482	250,575	235,512
June	275,993	264,217	
July	279,171	282,175	
August	249,830	298,631	
September	261,479	303,076	
October	239,706	263,215	
November	247,273	245,606	
December	278,678	232,318	

Median Price

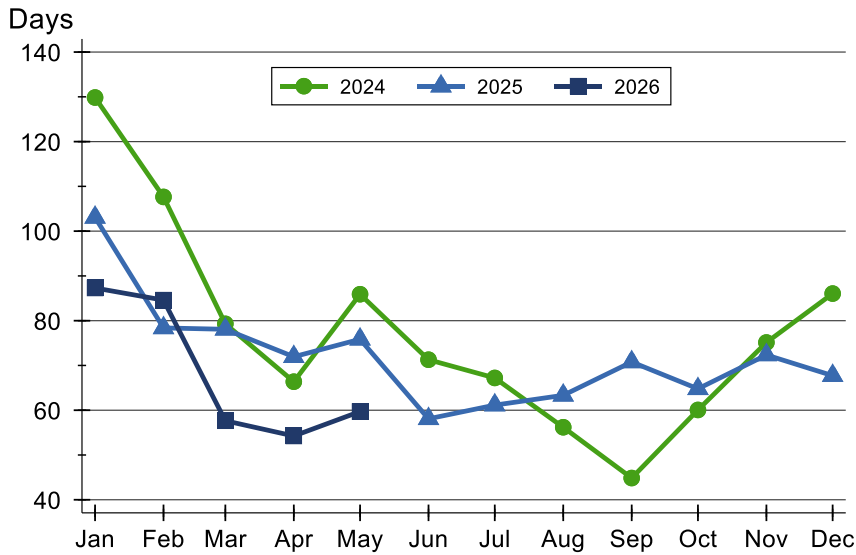


Month	2024	2025	2026
January	154,900	240,000	215,000
February	154,900	245,000	215,000
March	167,200	273,900	214,900
April	104,500	245,000	216,400
May	204,900	231,250	249,000
June	235,000	230,000	
July	250,000	244,750	
August	235,000	249,950	
September	235,000	255,000	
October	235,000	249,900	
November	240,000	245,000	
December	242,500	232,250	



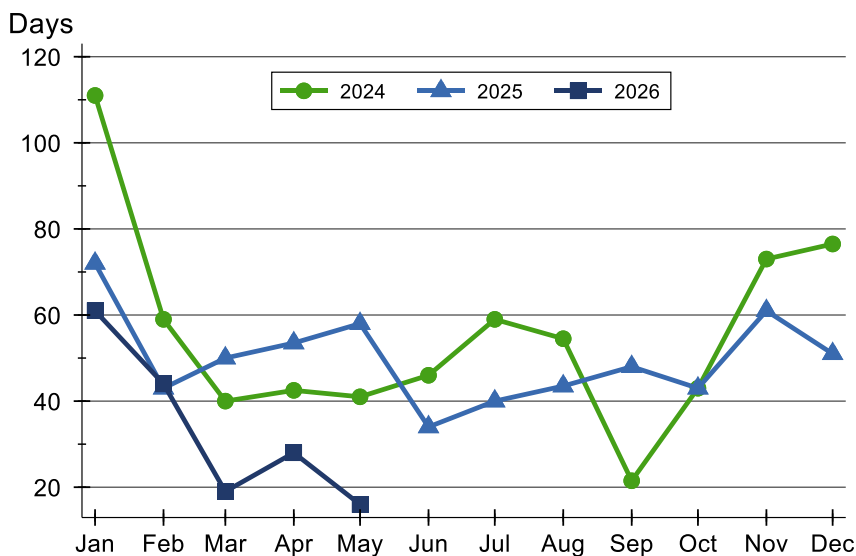
Clay County Active Listings Analysis

Average DOM



Month	2024	2025	2026
January	130	103	87
February	108	78	85
March	79	78	58
April	66	72	54
May	86	76	60
June	71	58	
July	67	61	
August	56	63	
September	45	71	
October	60	65	
November	75	72	
December	86	68	

Median DOM

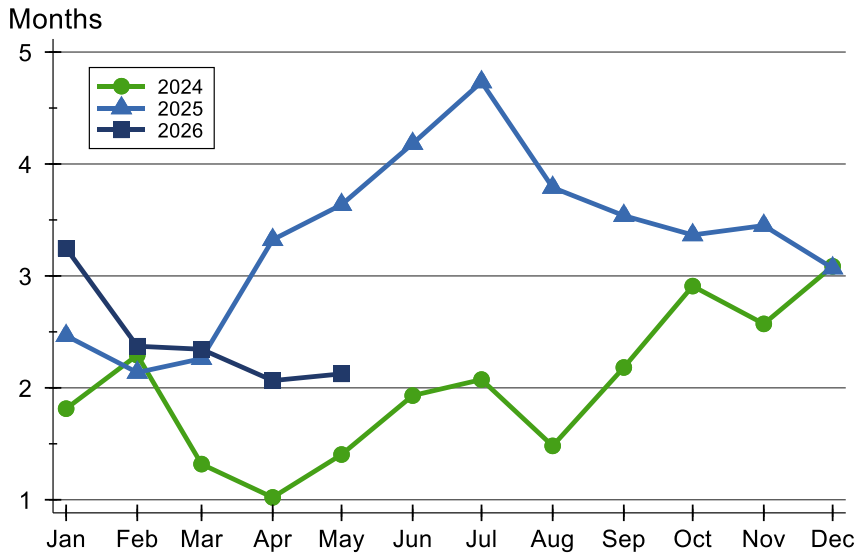


Month	2024	2025	2026
January	111	72	61
February	59	43	44
March	40	50	19
April	43	54	28
May	41	58	16
June	46	34	
July	59	40	
August	55	44	
September	22	48	
October	43	43	
November	73	61	
December	77	51	



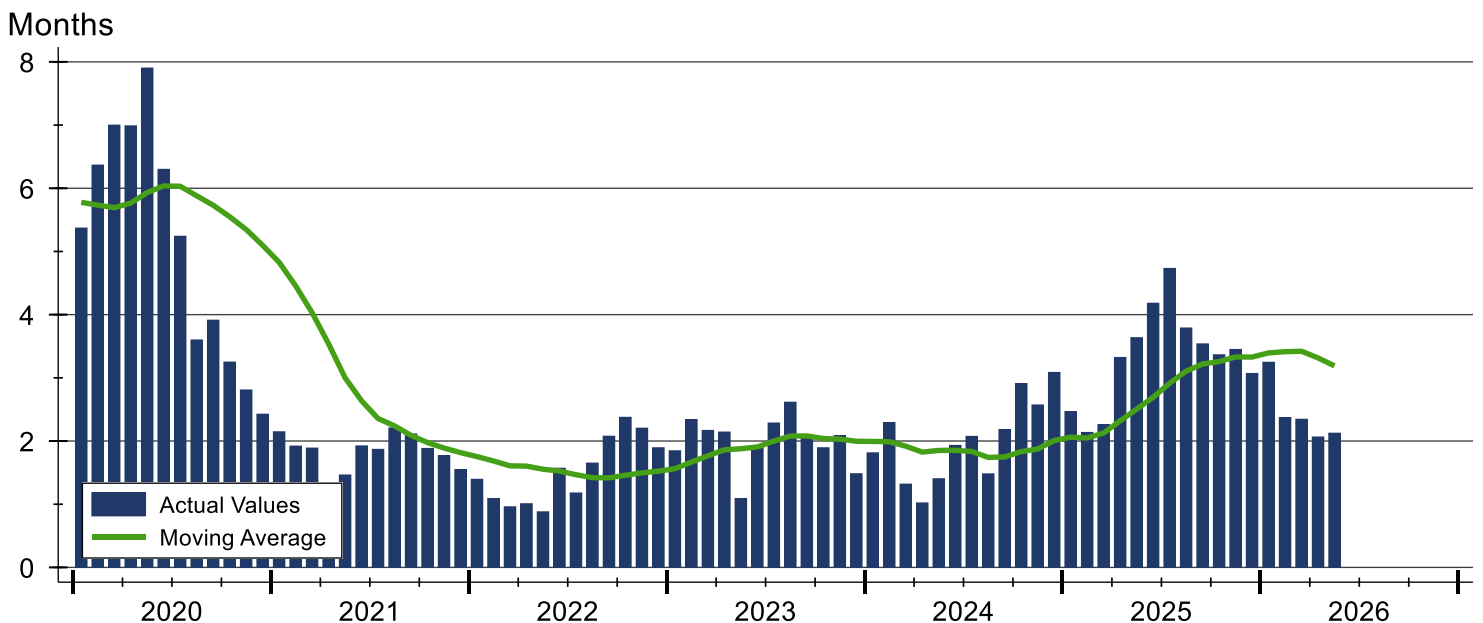
Clay County Months' Supply Analysis

Months' Supply by Month



Month	2024	2025	2026
January	1.8	2.5	3.2
February	2.3	2.1	2.4
March	1.3	2.3	2.3
April	1.0	3.3	2.1
May	1.4	3.6	2.1
June	1.9	4.2	
July	2.1	4.7	
August	1.5	3.8	
September	2.2	3.5	
October	2.9	3.4	
November	2.6	3.5	
December	3.1	3.1	

History of Month's Supply





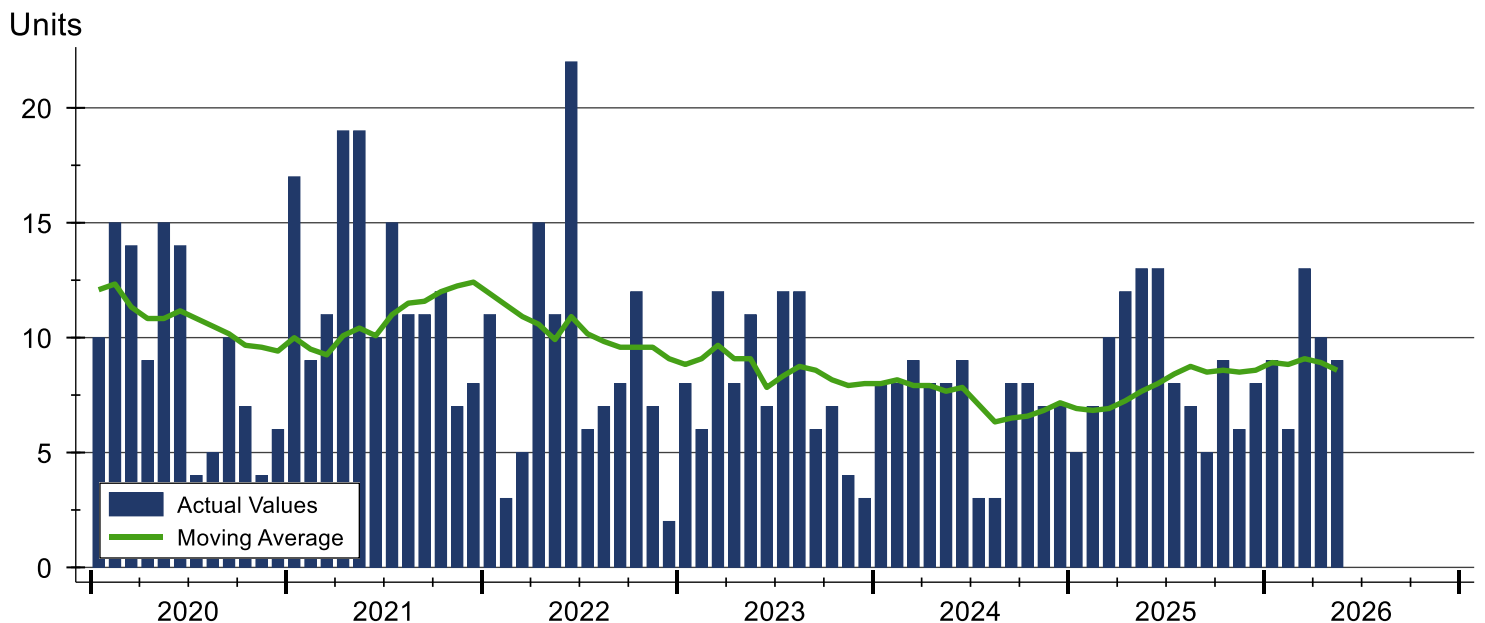
Clay County New Listings Analysis

Summary Statistics for New Listings		2026	May 2025	Change
Current Month	New Listings	9	13	-30.8%
	Volume (1,000s)	2,018	2,291	-11.9%
	Average List Price	224,267	176,231	27.3%
	Median List Price	249,000	199,500	24.8%
Year-to-Date	New Listings	47	47	0.0%
	Volume (1,000s)	9,490	10,111	-6.1%
	Average List Price	201,920	215,123	-6.1%
	Median List Price	189,500	169,900	11.5%

A total of 9 new listings were added in Clay County during May, down 30.8% from the same month in 2025. Year-to-date Clay County has seen 47 new listings.

The median list price of these homes was \$249,000 up from \$199,500 in 2025.

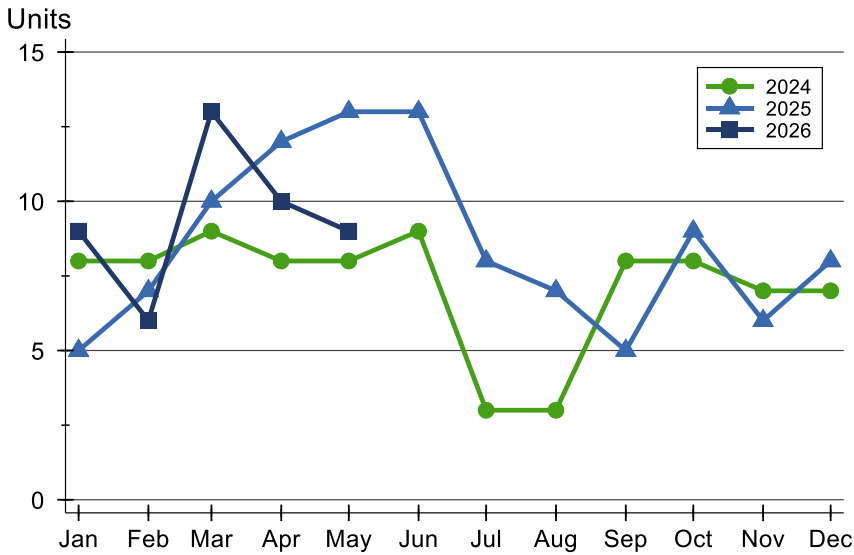
History of New Listings





Clay County New Listings Analysis

New Listings by Month



Month	2024	2025	2026
January	8	5	9
February	8	7	6
March	9	10	13
April	8	12	10
May	8	13	9
June	9	13	9
July	3	8	3
August	3	7	3
September	8	5	8
October	8	9	8
November	7	6	7
December	7	8	7

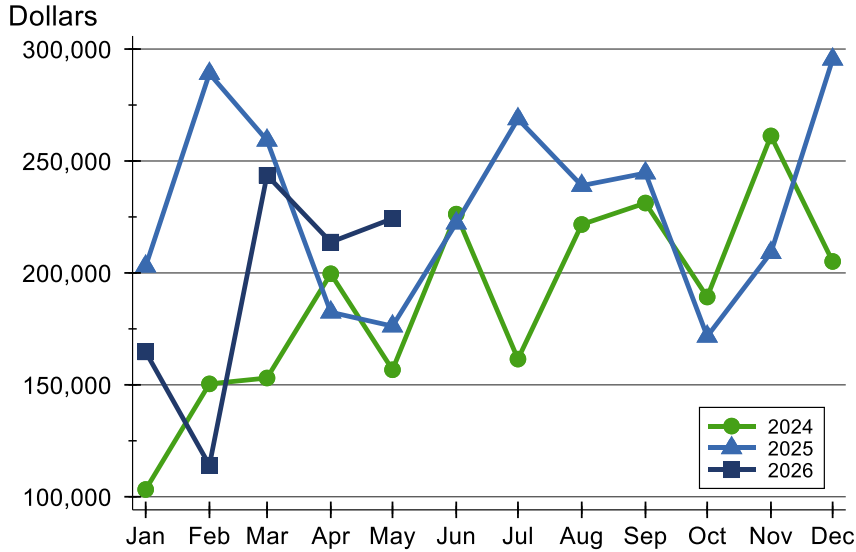
New Listings by Price Range

Price Range	New Listings		List Price		Days on Market		Price as % of Orig.	
	Number	Percent	Average	Median	Avg.	Med.	Avg.	Med.
Below \$25,000	0	0.0%	N/A	N/A	N/A	N/A	N/A	N/A
\$25,000-\$49,999	1	11.1%	33,000	33,000	16	16	100.0%	100.0%
\$50,000-\$99,999	0	0.0%	N/A	N/A	N/A	N/A	N/A	N/A
\$100,000-\$124,999	1	11.1%	120,000	120,000	8	8	100.0%	100.0%
\$125,000-\$149,999	1	11.1%	135,000	135,000	7	7	100.0%	100.0%
\$150,000-\$174,999	0	0.0%	N/A	N/A	N/A	N/A	N/A	N/A
\$175,000-\$199,999	0	0.0%	N/A	N/A	N/A	N/A	N/A	N/A
\$200,000-\$249,999	3	33.3%	246,133	249,000	10	5	99.3%	100.0%
\$250,000-\$299,999	2	22.2%	296,500	296,500	8	8	100.0%	100.0%
\$300,000-\$399,999	1	11.1%	399,000	399,000	12	12	100.0%	100.0%
\$400,000-\$499,999	0	0.0%	N/A	N/A	N/A	N/A	N/A	N/A
\$500,000-\$749,999	0	0.0%	N/A	N/A	N/A	N/A	N/A	N/A
\$750,000-\$999,999	0	0.0%	N/A	N/A	N/A	N/A	N/A	N/A
\$1,000,000 and up	0	0.0%	N/A	N/A	N/A	N/A	N/A	N/A



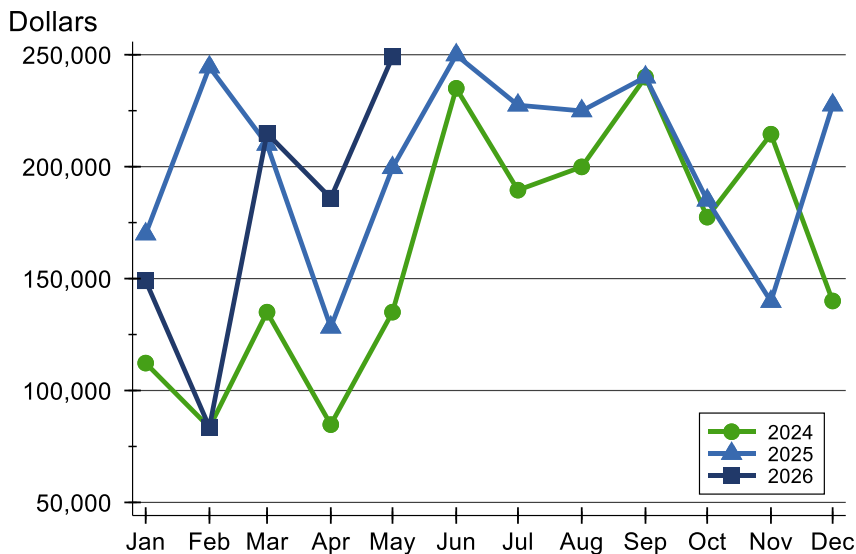
Clay County New Listings Analysis

Average Price



Month	2024	2025	2026
January	103,250	202,960	164,711
February	150,438	289,057	114,092
March	153,056	259,230	243,638
April	199,625	182,442	213,760
May	156,725	176,231	224,267
June	226,267	222,226	
July	161,500	268,788	
August	221,633	239,014	
September	231,225	244,600	
October	189,250	171,656	
November	261,200	209,050	
December	205,114	295,425	

Median Price



Month	2024	2025	2026
January	112,250	169,900	149,000
February	83,500	244,500	83,625
March	135,000	209,950	214,900
April	84,750	128,250	185,950
May	135,000	199,500	249,000
June	235,000	249,900	
July	189,500	227,450	
August	199,900	224,900	
September	240,000	240,000	
October	177,450	185,000	
November	214,500	139,750	
December	140,000	227,500	



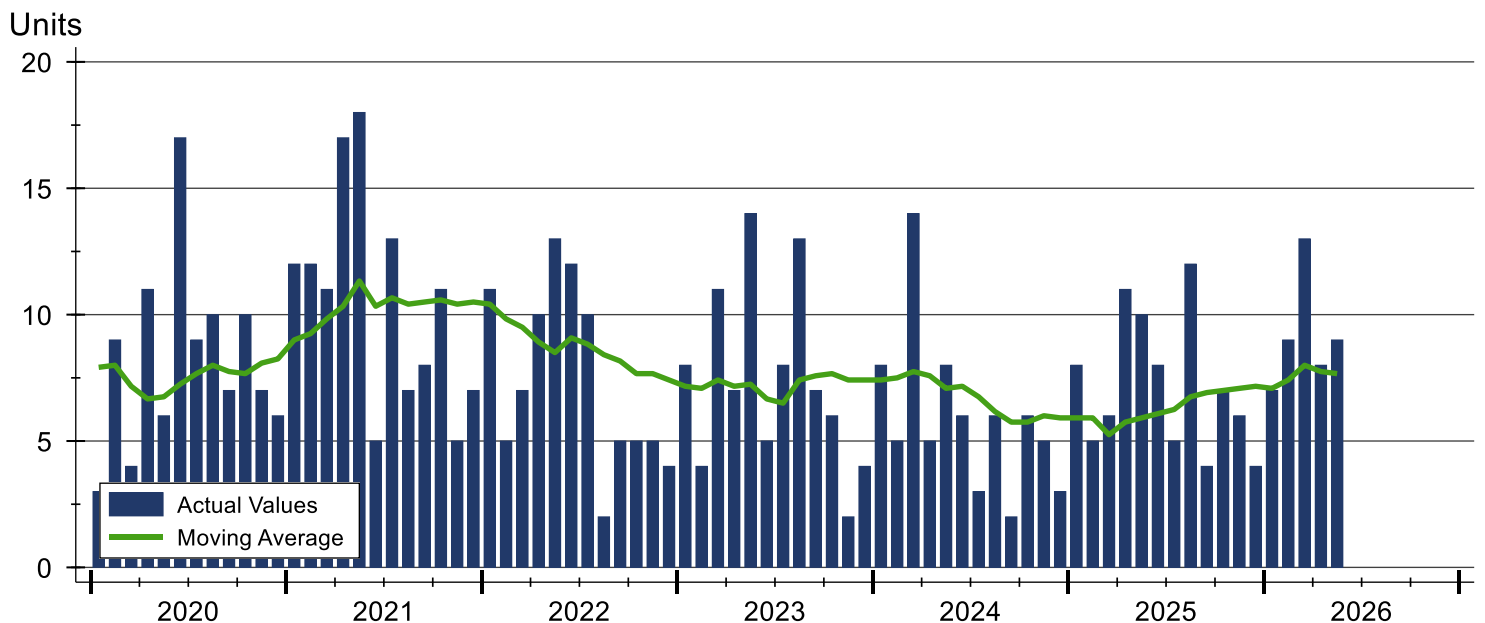
Clay County Contracts Written Analysis

Summary Statistics for Contracts Written		2026	May 2025	Change	Year-to-Date		
		2026	2025		2026	2025	Change
Contracts Written		9	10	-10.0%	46	40	15.0%
Volume (1,000s)		2,134	1,992	7.1%	9,789	7,498	30.6%
Average	Sale Price	237,056	199,170	19.0%	212,805	187,438	13.5%
	Days on Market	57	35	62.9%	66	58	13.8%
	Percent of Original	94.3%	93.9%	0.4%	93.5%	93.7%	-0.2%
Median	Sale Price	217,900	156,250	39.5%	193,450	166,200	16.4%
	Days on Market	27	21	28.6%	29	43	-32.6%
	Percent of Original	100.0%	97.3%	2.8%	96.4%	96.4%	0.0%

A total of 9 contracts for sale were written in Clay County during the month of May, down from 10 in 2025. The median list price of these homes was \$217,900, up from \$156,250 the prior year.

Half of the homes that went under contract in May were on the market less than 27 days, compared to 21 days in May 2025.

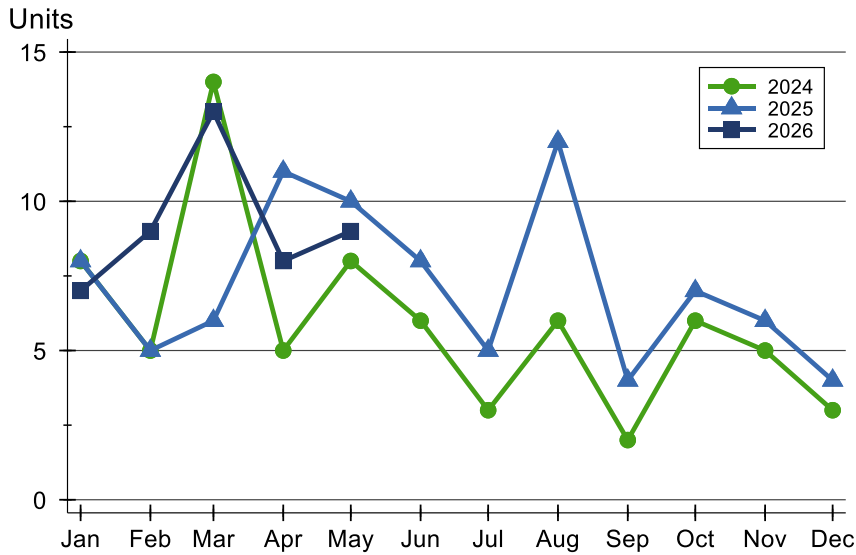
History of Contracts Written





Clay County Contracts Written Analysis

Contracts Written by Month



Month	2024	2025	2026
January	8	8	7
February	5	5	9
March	14	6	13
April	5	11	8
May	8	10	9
June	6	8	8
July	3	5	5
August	6	12	6
September	2	4	2
October	6	7	6
November	5	6	5
December	3	4	3

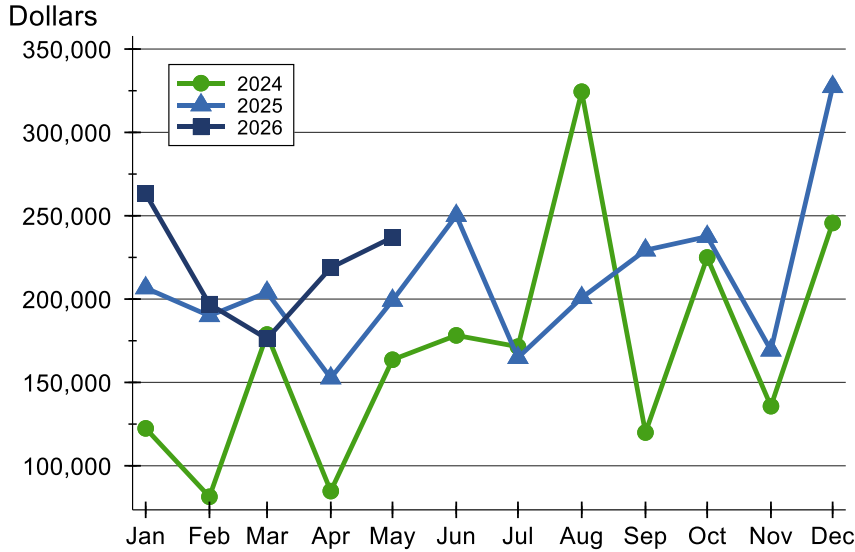
Contracts Written by Price Range

Price Range	Contracts Written		List Price		Days on Market		Price as % of Orig.	
	Number	Percent	Average	Median	Avg.	Med.	Avg.	Med.
Below \$25,000	0	0.0%	N/A	N/A	N/A	N/A	N/A	N/A
\$25,000-\$49,999	0	0.0%	N/A	N/A	N/A	N/A	N/A	N/A
\$50,000-\$99,999	0	0.0%	N/A	N/A	N/A	N/A	N/A	N/A
\$100,000-\$124,999	1	11.1%	115,000	115,000	27	27	92.7%	92.7%
\$125,000-\$149,999	0	0.0%	N/A	N/A	N/A	N/A	N/A	N/A
\$150,000-\$174,999	2	22.2%	172,400	172,400	103	103	100.0%	100.0%
\$175,000-\$199,999	1	11.1%	197,000	197,000	30	30	100.0%	100.0%
\$200,000-\$249,999	3	33.3%	232,600	230,000	74	70	86.0%	80.0%
\$250,000-\$299,999	0	0.0%	N/A	N/A	N/A	N/A	N/A	N/A
\$300,000-\$399,999	1	11.1%	349,000	349,000	20	20	98.1%	98.1%
\$400,000-\$499,999	1	11.1%	429,900	429,900	6	6	100.0%	100.0%
\$500,000-\$749,999	0	0.0%	N/A	N/A	N/A	N/A	N/A	N/A
\$750,000-\$999,999	0	0.0%	N/A	N/A	N/A	N/A	N/A	N/A
\$1,000,000 and up	0	0.0%	N/A	N/A	N/A	N/A	N/A	N/A



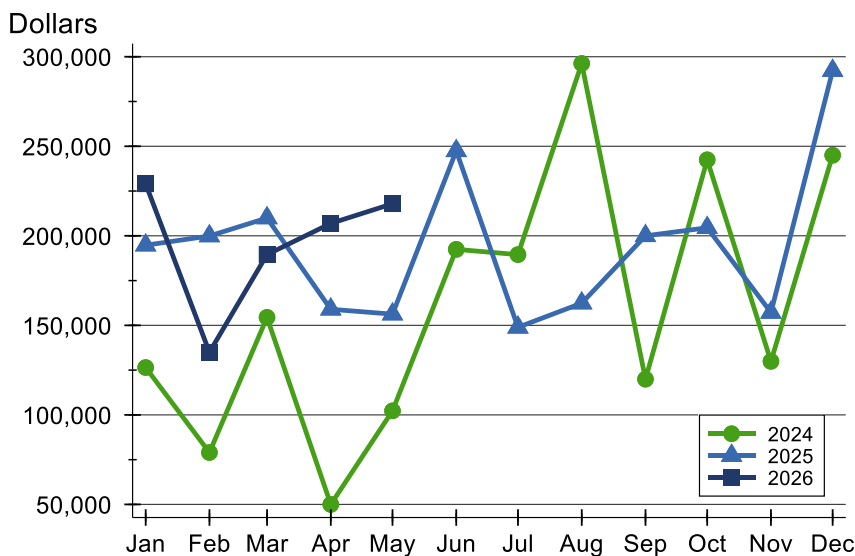
Clay County Contracts Written Analysis

Average Price



Month	2024	2025	2026
January	122,438	206,675	263,214
February	81,400	189,960	196,928
March	178,743	203,983	176,177
April	84,800	152,609	218,800
May	163,613	199,170	237,056
June	178,217	250,088	
July	171,467	164,860	
August	324,417	200,792	
September	119,950	229,350	
October	224,967	237,486	
November	135,740	169,300	
December	245,667	327,375	

Median Price

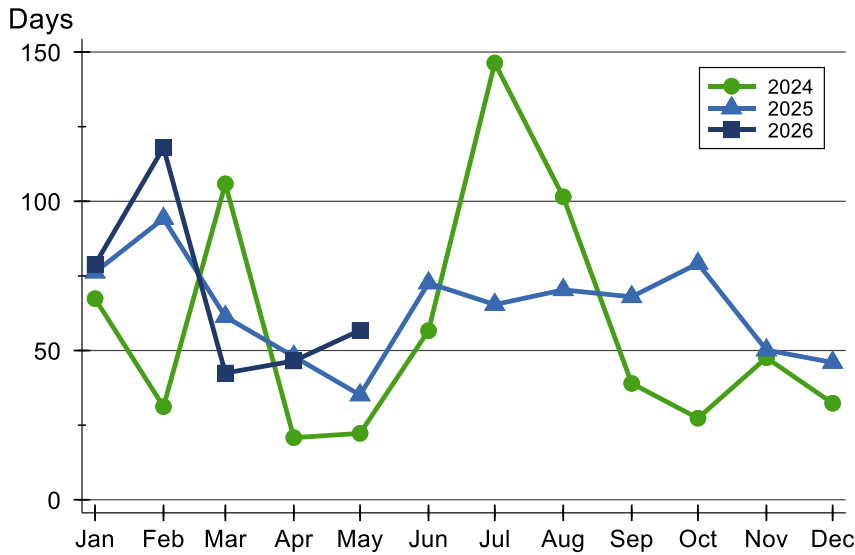


Month	2024	2025	2026
January	126,450	194,750	229,000
February	79,000	199,900	135,000
March	154,450	209,950	189,500
April	50,000	159,000	206,950
May	102,250	156,250	217,900
June	192,450	247,450	
July	189,500	148,900	
August	296,250	162,400	
September	119,950	200,000	
October	242,450	204,500	
November	129,900	157,200	
December	245,000	292,250	



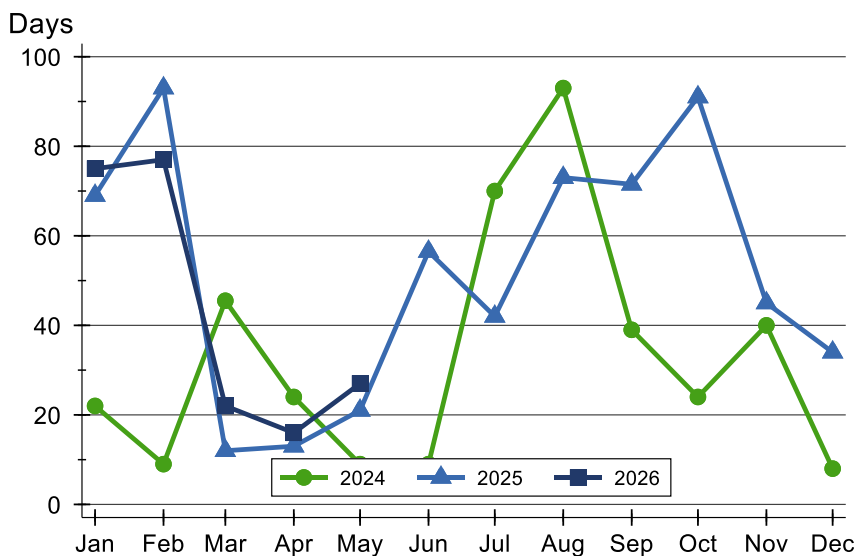
Clay County Contracts Written Analysis

Average DOM



Month	2024	2025	2026
January	67	76	79
February	31	94	118
March	106	61	42
April	21	48	47
May	22	35	57
June	57	73	
July	146	65	
August	102	70	
September	39	68	
October	27	79	
November	48	50	
December	32	46	

Median DOM



Month	2024	2025	2026
January	22	69	75
February	9	93	77
March	46	12	22
April	24	13	16
May	9	21	27
June	9	57	
July	70	42	
August	93	73	
September	39	72	
October	24	91	
November	40	45	
December	8	34	



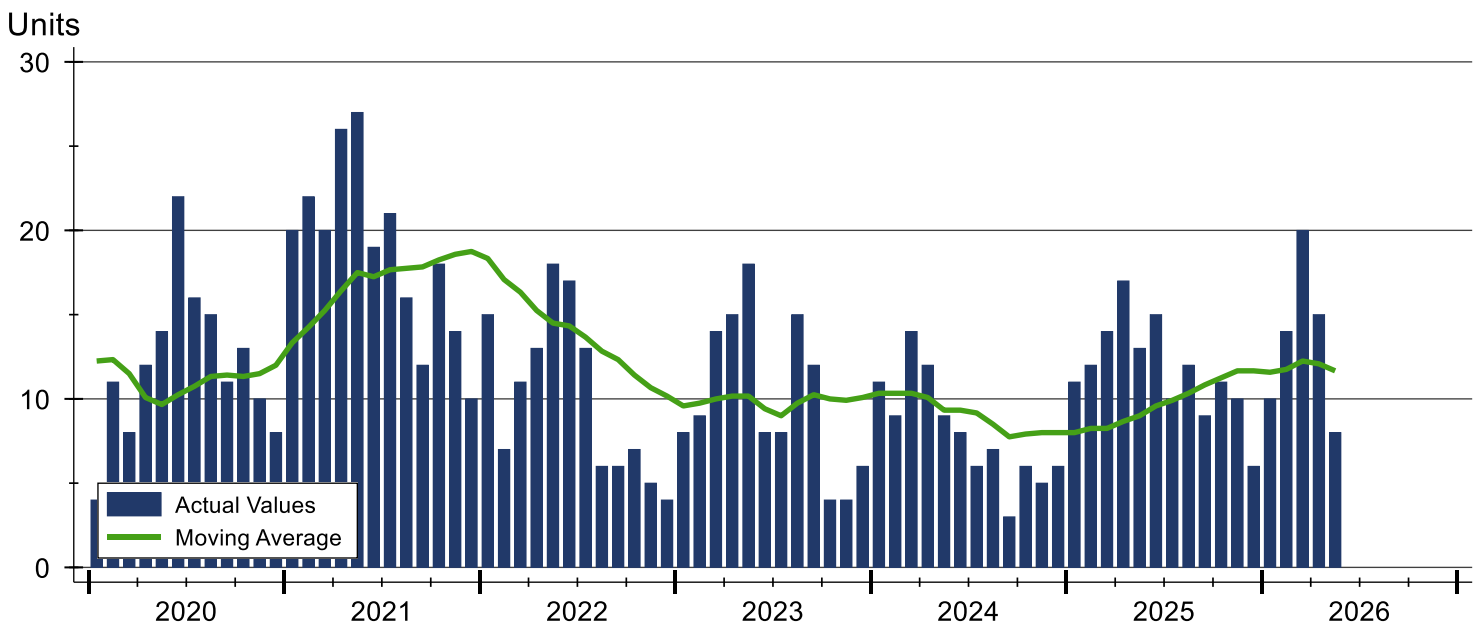
Clay County Pending Contracts Analysis

Summary Statistics for Pending Contracts		2026	End of May 2025	Change
Pending Contracts		8	13	-38.5%
Volume (1,000s)		1,916	2,909	-34.1%
Average	List Price	239,450	223,738	7.0%
	Days on Market	55	44	25.0%
	Percent of Original	96.3%	97.1%	-0.8%
Median	List Price	213,500	179,900	18.7%
	Days on Market	24	46	-47.8%
	Percent of Original	100.0%	100.0%	0.0%

A total of 8 listings in Clay County had contracts pending at the end of May, down from 13 contracts pending at the end of May 2025.

Pending contracts reflect listings with a contract in place at the end of the month. In contrast, contracts written measures the number of listings put under contract during the month.

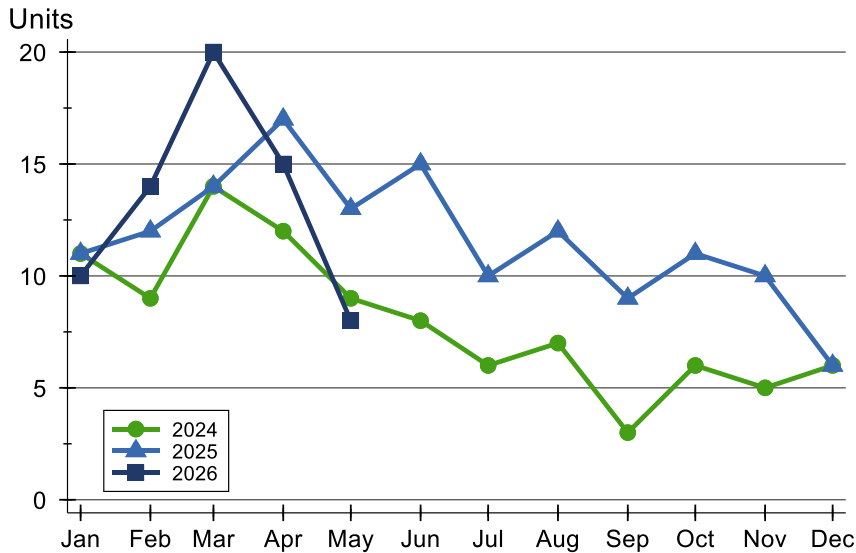
History of Pending Contracts





Clay County Pending Contracts Analysis

Pending Contracts by Month



Month	2024	2025	2026
January	11	11	10
February	9	12	14
March	14	14	20
April	12	17	15
May	9	13	8
June	8	15	15
July	6	10	10
August	7	12	12
September	3	9	9
October	6	11	11
November	5	10	10
December	6	6	6

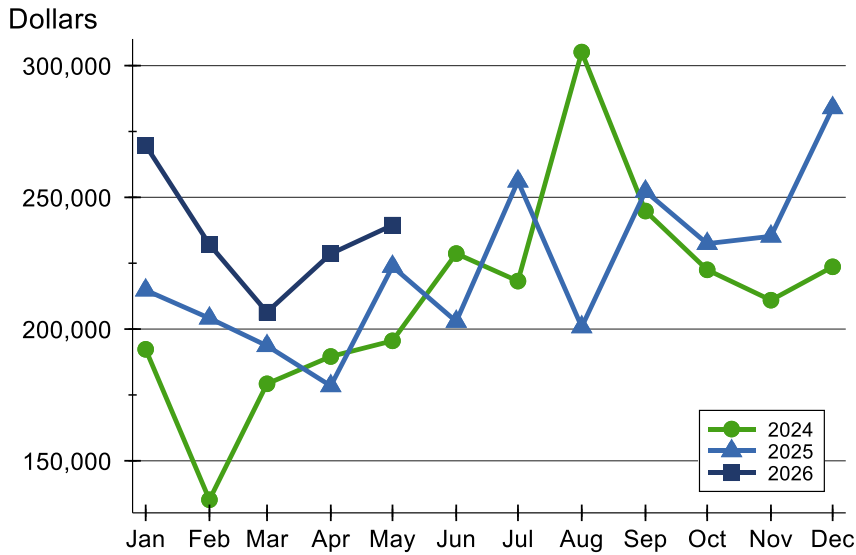
Pending Contracts by Price Range

Price Range	Pending Contracts		List Price		Days on Market		Price as % of Orig.	
	Number	Percent	Average	Median	Avg.	Med.	Avg.	Med.
Below \$25,000	0	0.0%	N/A	N/A	N/A	N/A	N/A	N/A
\$25,000-\$49,999	0	0.0%	N/A	N/A	N/A	N/A	N/A	N/A
\$50,000-\$99,999	0	0.0%	N/A	N/A	N/A	N/A	N/A	N/A
\$100,000-\$124,999	1	12.5%	115,000	115,000	27	27	92.7%	92.7%
\$125,000-\$149,999	0	0.0%	N/A	N/A	N/A	N/A	N/A	N/A
\$150,000-\$174,999	2	25.0%	172,400	172,400	103	103	100.0%	100.0%
\$175,000-\$199,999	1	12.5%	197,000	197,000	30	30	100.0%	100.0%
\$200,000-\$249,999	2	25.0%	239,950	239,950	77	77	89.0%	89.0%
\$250,000-\$299,999	0	0.0%	N/A	N/A	N/A	N/A	N/A	N/A
\$300,000-\$399,999	1	12.5%	349,000	349,000	20	20	100.0%	100.0%
\$400,000-\$499,999	1	12.5%	429,900	429,900	6	6	100.0%	100.0%
\$500,000-\$749,999	0	0.0%	N/A	N/A	N/A	N/A	N/A	N/A
\$750,000-\$999,999	0	0.0%	N/A	N/A	N/A	N/A	N/A	N/A
\$1,000,000 and up	0	0.0%	N/A	N/A	N/A	N/A	N/A	N/A



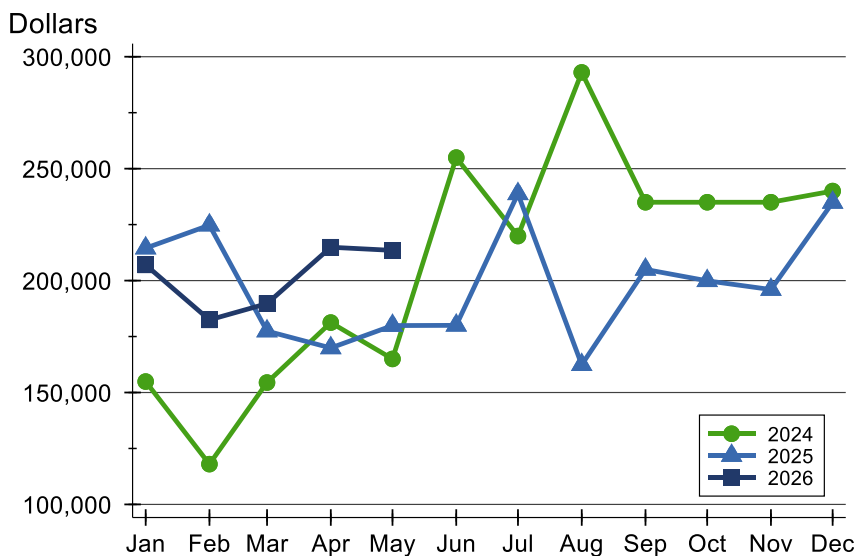
Clay County Pending Contracts Analysis

Average Price



Month	2024	2025	2026
January	192,309	214,764	269,740
February	135,211	204,117	232,125
March	179,221	193,650	206,413
April	189,592	178,441	228,587
May	195,544	223,738	239,450
June	228,663	202,873	
July	218,217	256,110	
August	305,143	200,792	
September	244,800	252,289	
October	222,483	232,436	
November	210,960	235,220	
December	223,633	283,967	

Median Price

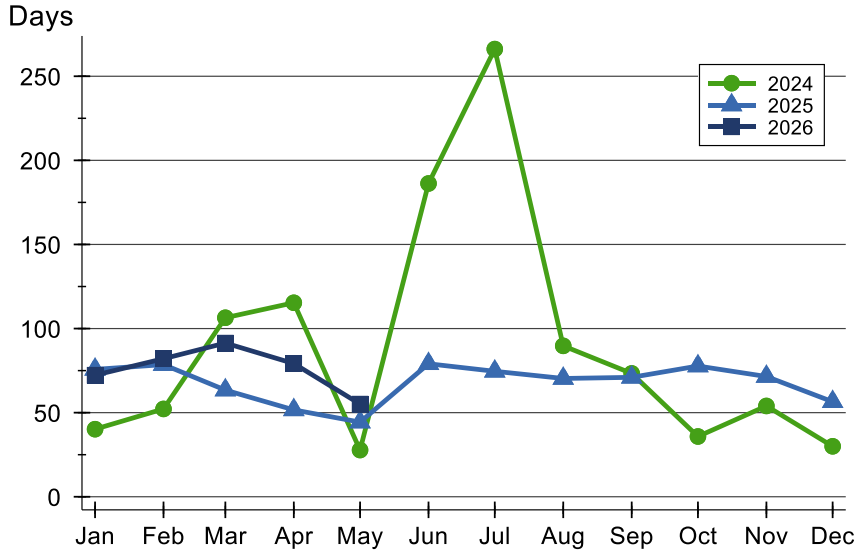


Month	2024	2025	2026
January	154,900	214,500	207,000
February	118,000	224,750	182,450
March	154,450	177,450	189,700
April	181,250	169,900	214,900
May	165,000	179,900	213,500
June	254,950	180,000	
July	219,900	238,750	
August	293,000	162,400	
September	235,000	205,000	
October	235,000	199,900	
November	235,000	196,000	
December	240,000	234,900	



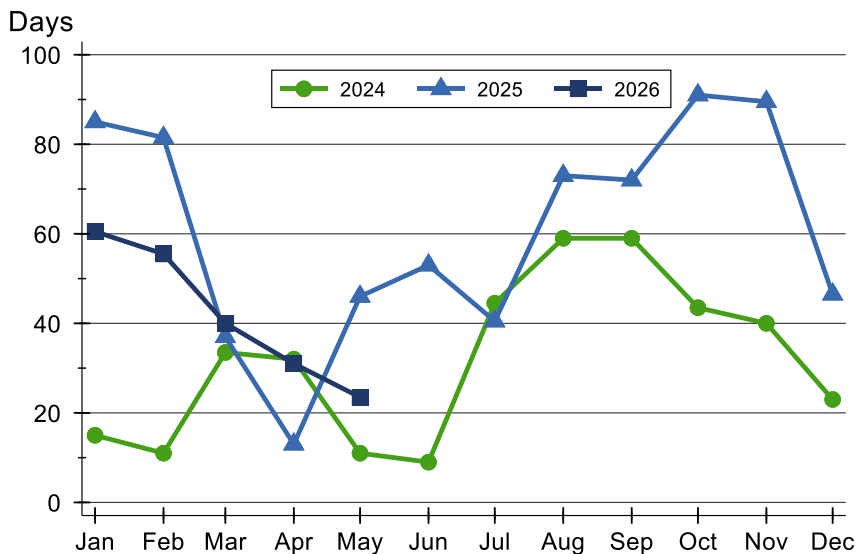
Clay County Pending Contracts Analysis

Average DOM



Month	2024	2025	2026
January	40	76	72
February	52	79	82
March	106	63	91
April	115	52	79
May	28	44	55
June	186	79	
July	266	75	
August	90	70	
September	73	71	
October	36	78	
November	54	72	
December	30	57	

Median DOM



Month	2024	2025	2026
January	15	85	61
February	11	82	56
March	34	37	40
April	32	13	31
May	11	46	24
June	9	53	
July	45	41	
August	59	73	
September	59	72	
October	44	91	
November	40	90	
December	23	47	