



**March  
2026**

# Flint Hills MLS Statistics



**FLINT HILLS  
ASSOCIATION  
OF REALTORS®**

## Dickinson County Housing Report



### Market Overview

#### Dickinson County Home Sales Fell in March

Total home sales in Dickinson County fell last month to 12 units, compared to 15 units in March 2025. Total sales volume was \$2.7 million, down from a year earlier.

The median sale price in March was \$167,200, down from \$210,000 a year earlier. Homes that sold in March were typically on the market for 23 days and sold for 97.9% of their list prices.

#### Dickinson County Active Listings Up at End of March

The total number of active listings in Dickinson County at the end of March was 39 units, up from 36 at the same point in 2025. This represents a 2.1 months' supply of homes available for sale. The median list price of homes on the market at the end of March was \$219,000.

During March, a total of 26 contracts were written up from 21 in March 2025. At the end of the month, there were 34 contracts still pending.

### Report Contents

- Summary Statistics – Page 2
- Closed Listing Analysis – Page 3
- Active Listings Analysis – Page 7
- Months' Supply Analysis – Page 11
- New Listings Analysis – Page 12
- Contracts Written Analysis – Page 15
- Pending Contracts Analysis – Page 19

### Contact Information

Margaret Pendleton, Association Executive  
 Flint Hills Association of REALTORS®  
 205 S. Seth Child Road  
 Manhattan, KS 66502  
 785-776-1203  
[ae@flinthillsrealtors.net](mailto:ae@flinthillsrealtors.net)  
[www.flinthillsrealtors.net](http://www.flinthillsrealtors.net)



**March  
2026**

# Flint Hills MLS Statistics



**FLINT HILLS  
ASSOCIATION  
OF REALTORS®**

## Dickinson County Summary Statistics

March MLS Statistics Three-year History		Current Month			Year-to-Date		
		2026	2025	2024	2026	2025	2024
<b>Home Sales</b>		<b>12</b>	<b>15</b>	<b>23</b>	<b>34</b>	<b>39</b>	<b>46</b>
Change from prior year		-20.0%	-34.8%	-8.0%	-12.8%	-15.2%	-20.7%
<b>Active Listings</b>		<b>39</b>	<b>36</b>	<b>42</b>	<b>N/A</b>	<b>N/A</b>	<b>N/A</b>
Change from prior year		8.3%	-14.3%	10.5%			
<b>Months' Supply</b>		<b>2.1</b>	<b>1.9</b>	<b>2.0</b>	<b>N/A</b>	<b>N/A</b>	<b>N/A</b>
Change from prior year		10.5%	-5.0%	25.0%			
<b>New Listings</b>		<b>25</b>	<b>27</b>	<b>30</b>	<b>68</b>	<b>63</b>	<b>64</b>
Change from prior year		-7.4%	-10.0%	-3.2%	7.9%	-1.6%	-20.0%
<b>Contracts Written</b>		<b>26</b>	<b>21</b>	<b>18</b>	<b>52</b>	<b>43</b>	<b>53</b>
Change from prior year		23.8%	16.7%	-14.3%	20.9%	-18.9%	-26.4%
<b>Pending Contracts</b>		<b>34</b>	<b>27</b>	<b>22</b>	<b>N/A</b>	<b>N/A</b>	<b>N/A</b>
Change from prior year		25.9%	22.7%	-42.1%			
<b>Sales Volume (1,000s)</b>		<b>2,666</b>	<b>3,272</b>	<b>3,400</b>	<b>5,876</b>	<b>7,358</b>	<b>6,852</b>
Change from prior year		-18.5%	-3.8%	-0.1%	-20.1%	7.4%	-8.5%
Average	<b>Sale Price</b>	<b>222,170</b>	<b>218,140</b>	<b>147,837</b>	<b>172,810</b>	<b>188,674</b>	<b>148,954</b>
	Change from prior year	1.8%	47.6%	8.6%	-8.4%	26.7%	15.4%
	<b>List Price of Actives</b>	<b>255,918</b>	<b>227,603</b>	<b>204,743</b>	<b>N/A</b>	<b>N/A</b>	<b>N/A</b>
	Change from prior year	12.4%	11.2%	61.4%			
	<b>Days on Market</b>	<b>26</b>	<b>31</b>	<b>47</b>	<b>39</b>	<b>36</b>	<b>63</b>
Change from prior year	-16.1%	-34.0%	-28.8%	8.3%	-42.9%	-6.0%	
<b>Percent of List</b>	<b>97.8%</b>	<b>96.5%</b>	<b>95.7%</b>	<b>97.1%</b>	<b>96.8%</b>	<b>94.6%</b>	
Change from prior year	1.3%	0.8%	2.2%	0.3%	2.3%	-0.1%	
<b>Percent of Original</b>	<b>94.6%</b>	<b>95.9%</b>	<b>91.4%</b>	<b>93.9%</b>	<b>94.1%</b>	<b>90.0%</b>	
Change from prior year	-1.4%	4.9%	2.6%	-0.2%	4.6%	-0.9%	
Median	<b>Sale Price</b>	<b>167,200</b>	<b>210,000</b>	<b>122,500</b>	<b>153,750</b>	<b>179,000</b>	<b>139,950</b>
	Change from prior year	-20.4%	71.4%	-5.4%	-14.1%	27.9%	15.9%
	<b>List Price of Actives</b>	<b>219,000</b>	<b>224,750</b>	<b>165,000</b>	<b>N/A</b>	<b>N/A</b>	<b>N/A</b>
	Change from prior year	-2.6%	36.2%	69.3%			
	<b>Days on Market</b>	<b>23</b>	<b>12</b>	<b>7</b>	<b>26</b>	<b>13</b>	<b>21</b>
Change from prior year	91.7%	71.4%	-78.1%	100.0%	-38.1%	-25.0%	
<b>Percent of List</b>	<b>97.9%</b>	<b>99.0%</b>	<b>98.6%</b>	<b>99.6%</b>	<b>99.3%</b>	<b>98.1%</b>	
Change from prior year	-1.1%	0.4%	2.0%	0.3%	1.2%	1.4%	
<b>Percent of Original</b>	<b>96.8%</b>	<b>99.4%</b>	<b>93.9%</b>	<b>96.9%</b>	<b>97.5%</b>	<b>93.9%</b>	
Change from prior year	-2.6%	5.9%	2.0%	-0.6%	3.8%	-0.1%	

Note: Year-to-date statistics cannot be calculated for Active Listings, Months' Supply and Pending Contracts.



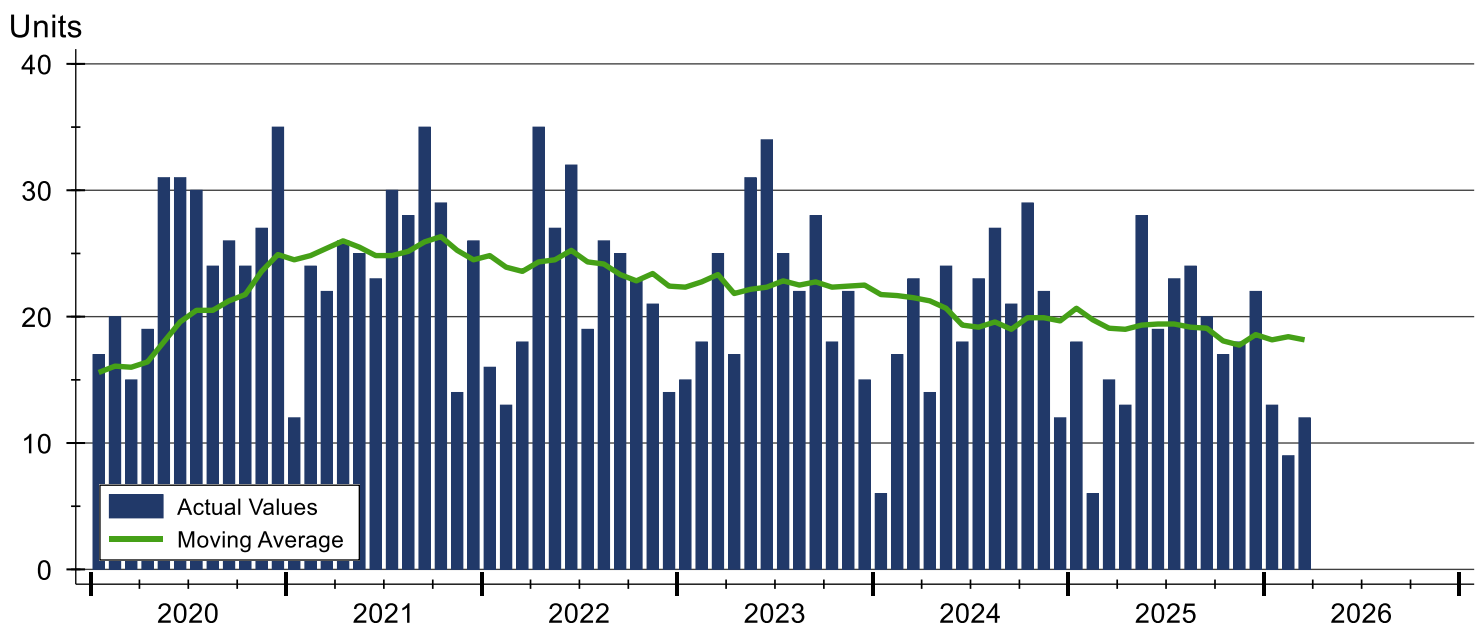
## Dickinson County Closed Listings Analysis

Summary Statistics for Closed Listings		2026	March 2025	Change	2026	Year-to-Date 2025	Change
Closed Listings		12	15	-20.0%	34	39	-12.8%
Volume (1,000s)		2,666	3,272	-18.5%	5,876	7,358	-20.1%
Months' Supply		2.1	1.9	10.5%	N/A	N/A	N/A
Average	Sale Price	222,170	218,140	1.8%	172,810	188,674	-8.4%
	Days on Market	26	31	-16.1%	39	36	8.3%
	Percent of List	97.8%	96.5%	1.3%	97.1%	96.8%	0.3%
	Percent of Original	94.6%	95.9%	-1.4%	93.9%	94.1%	-0.2%
Median	Sale Price	167,200	210,000	-20.4%	153,750	179,000	-14.1%
	Days on Market	23	12	91.7%	26	13	100.0%
	Percent of List	97.9%	99.0%	-1.1%	99.6%	99.3%	0.3%
	Percent of Original	96.8%	99.4%	-2.6%	96.9%	97.5%	-0.6%

A total of 12 homes sold in Dickinson County in March, down from 15 units in March 2025. Total sales volume fell to \$2.7 million compared to \$3.3 million in the previous year.

The median sales price in March was \$167,200, down 20.4% compared to the prior year. Median days on market was 23 days, down from 30 days in February, but up from 12 in March 2025.

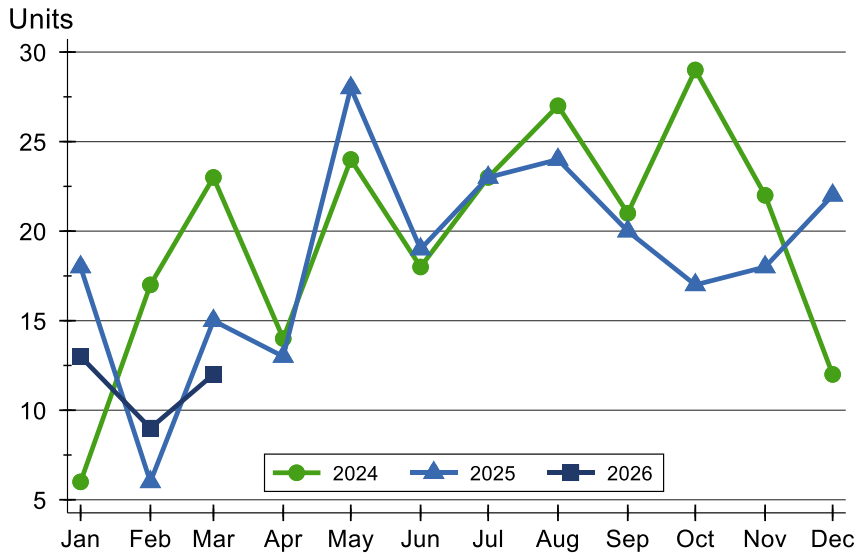
## History of Closed Listings





## Dickinson County Closed Listings Analysis

### Closed Listings by Month



Month	2024	2025	2026
<b>January</b>	6	18	<b>13</b>
<b>February</b>	17	6	<b>9</b>
<b>March</b>	23	15	<b>12</b>
<b>April</b>	14	13	
<b>May</b>	24	28	
<b>June</b>	18	19	
<b>July</b>	23	23	
<b>August</b>	27	24	
<b>September</b>	21	20	
<b>October</b>	29	17	
<b>November</b>	22	18	
<b>December</b>	12	22	

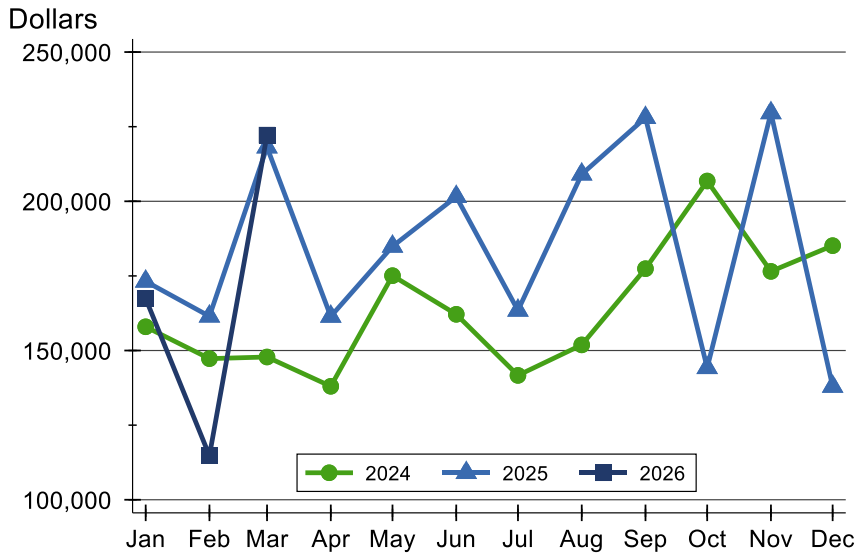
### Closed Listings by Price Range

Price Range	Sales		Months' Supply	Sale Price		Days on Market		Price as % of List		Price as % of Orig.	
	Number	Percent		Average	Median	Avg.	Med.	Avg.	Med.	Avg.	Med.
Below \$25,000	1	8.3%	1.0	18,500	18,500	30	30	92.5%	92.5%	80.4%	80.4%
\$25,000-\$49,999	0	0.0%	N/A	N/A	N/A	N/A	N/A	N/A	N/A	N/A	N/A
\$50,000-\$99,999	1	8.3%	0.9	50,000	50,000	26	26	84.7%	84.7%	66.7%	66.7%
\$100,000-\$124,999	0	0.0%	N/A	N/A	N/A	N/A	N/A	N/A	N/A	N/A	N/A
\$125,000-\$149,999	1	8.3%	2.1	126,800	126,800	86	86	105.7%	105.7%	97.0%	97.0%
\$150,000-\$174,999	4	33.3%	0.0	161,600	160,950	22	20	98.8%	98.2%	98.8%	98.2%
\$175,000-\$199,999	0	0.0%	6.0	N/A	N/A	N/A	N/A	N/A	N/A	N/A	N/A
\$200,000-\$249,999	1	8.3%	3.0	235,000	235,000	9	9	94.0%	94.0%	94.0%	94.0%
\$250,000-\$299,999	2	16.7%	1.6	268,850	268,850	31	31	99.6%	99.6%	99.6%	99.6%
\$300,000-\$399,999	0	0.0%	3.8	N/A	N/A	N/A	N/A	N/A	N/A	N/A	N/A
\$400,000-\$499,999	1	8.3%	2.0	486,644	486,644	0	0	106.2%	106.2%	106.2%	106.2%
\$500,000-\$749,999	1	8.3%	4.0	565,000	565,000	16	16	96.6%	96.6%	96.6%	96.6%
\$750,000-\$999,999	0	0.0%	N/A	N/A	N/A	N/A	N/A	N/A	N/A	N/A	N/A
\$1,000,000 and up	0	0.0%	N/A	N/A	N/A	N/A	N/A	N/A	N/A	N/A	N/A



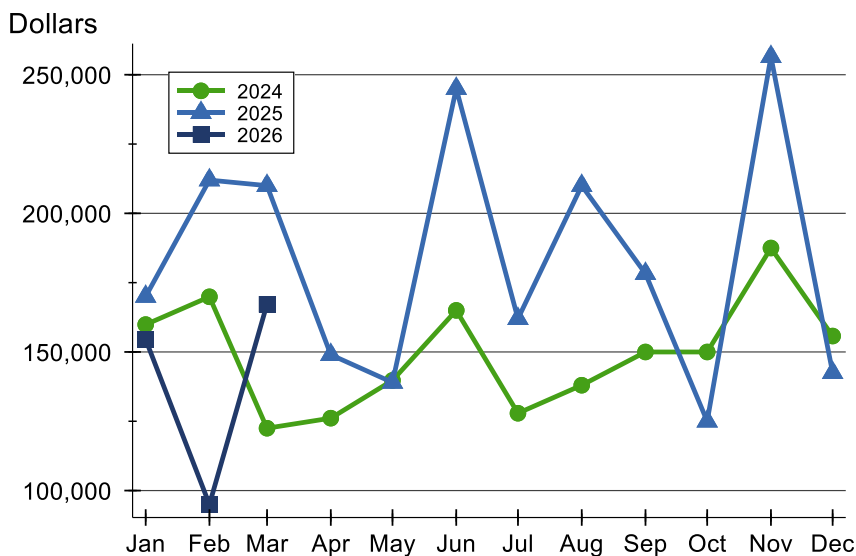
## Dickinson County Closed Listings Analysis

### Average Price



Month	2024	2025	2026
<b>January</b>	157,958	173,183	<b>167,422</b>
<b>February</b>	147,288	161,483	<b>114,778</b>
<b>March</b>	147,837	218,140	<b>222,170</b>
<b>April</b>	138,018	161,427	
<b>May</b>	175,085	184,893	
<b>June</b>	162,139	201,547	
<b>July</b>	141,674	163,452	
<b>August</b>	151,893	209,067	
<b>September</b>	177,424	144,212	
<b>October</b>	206,800	176,523	
<b>November</b>	176,523	229,606	
<b>December</b>	185,146	137,952	

### Median Price

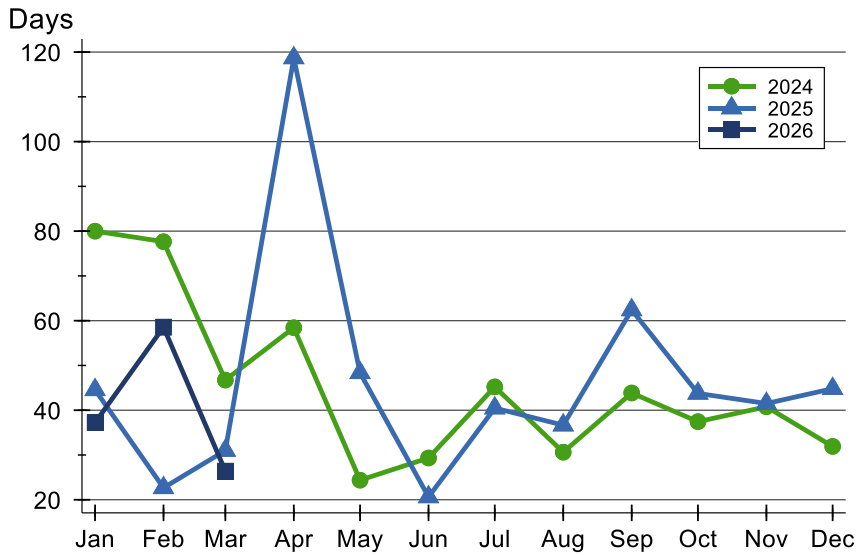


Month	2024	2025	2026
<b>January</b>	159,875	170,000	<b>154,500</b>
<b>February</b>	169,900	212,000	<b>95,000</b>
<b>March</b>	122,500	210,000	<b>167,200</b>
<b>April</b>	126,125	149,000	
<b>May</b>	139,750	139,000	
<b>June</b>	165,000	245,000	
<b>July</b>	127,900	162,000	
<b>August</b>	138,000	210,000	
<b>September</b>	150,000	178,250	
<b>October</b>	150,000	125,000	
<b>November</b>	187,500	256,500	
<b>December</b>	155,750	142,500	



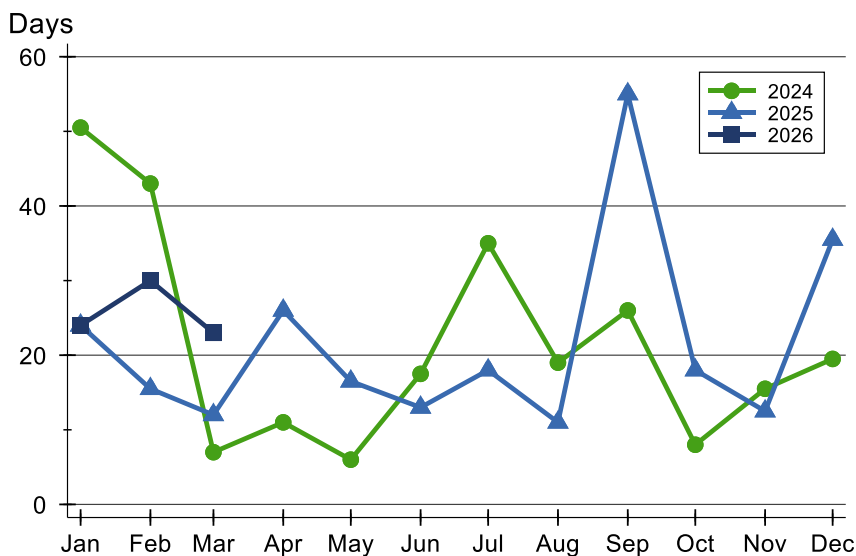
## Dickinson County Closed Listings Analysis

### Average DOM



Month	2024	2025	2026
January	80	45	<b>37</b>
February	78	23	<b>59</b>
March	47	31	<b>26</b>
April	58	119	
May	24	48	
June	29	21	
July	45	40	
August	31	37	
September	44	62	
October	37	44	
November	41	42	
December	32	45	

### Median DOM



Month	2024	2025	2026
January	51	24	<b>24</b>
February	43	16	<b>30</b>
March	7	12	<b>23</b>
April	11	26	
May	6	17	
June	18	13	
July	35	18	
August	19	11	
September	26	55	
October	8	18	
November	16	13	
December	20	36	



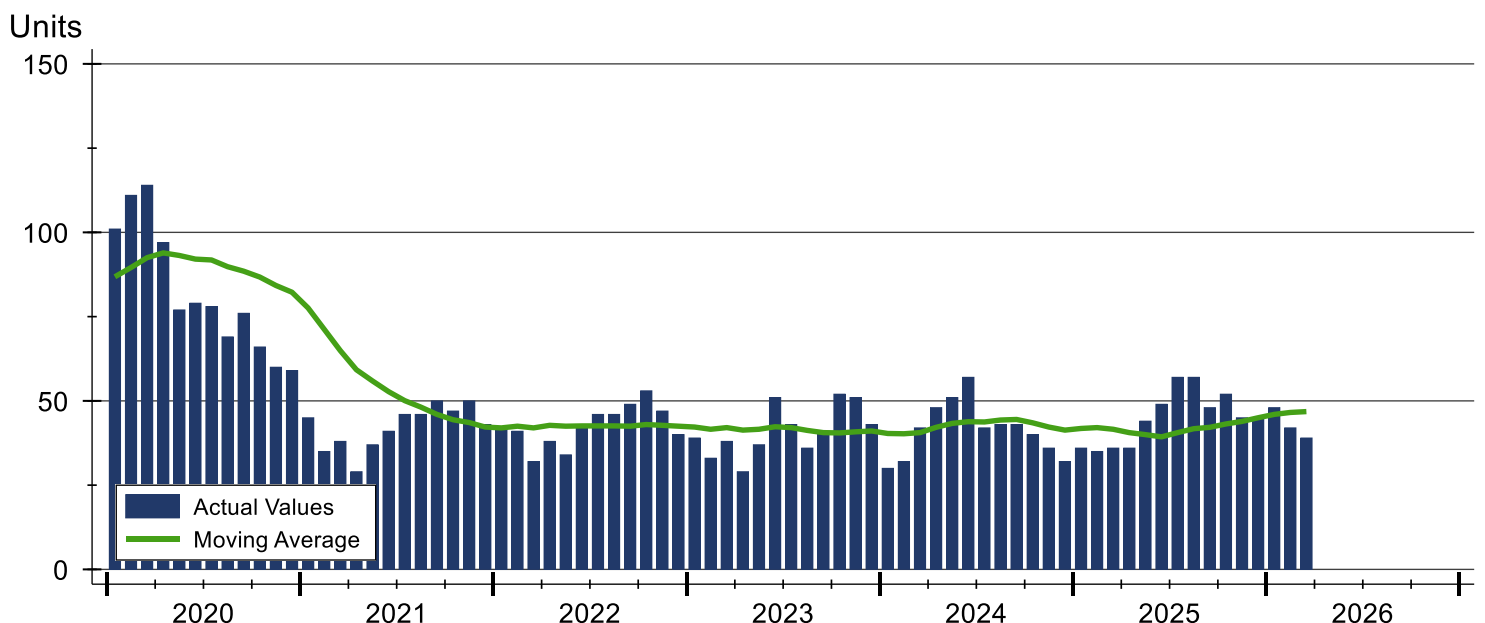
# Dickinson County Active Listings Analysis

Summary Statistics for Active Listings		2026	End of March 2025	Change
Active Listings		39	36	8.3%
Volume (1,000s)		9,981	8,194	21.8%
Months' Supply		2.1	1.9	10.5%
Average	List Price	255,918	227,603	12.4%
	Days on Market	67	82	-18.3%
	Percent of Original	96.4%	97.0%	-0.6%
Median	List Price	219,000	224,750	-2.6%
	Days on Market	20	50	-60.0%
	Percent of Original	100.0%	100.0%	0.0%

A total of 39 homes were available for sale in Dickinson County at the end of March. This represents a 2.1 months' supply of active listings.

The median list price of homes on the market at the end of March was \$219,000, down 2.6% from 2025. The typical time on market for active listings was 20 days, down from 50 days a year earlier.

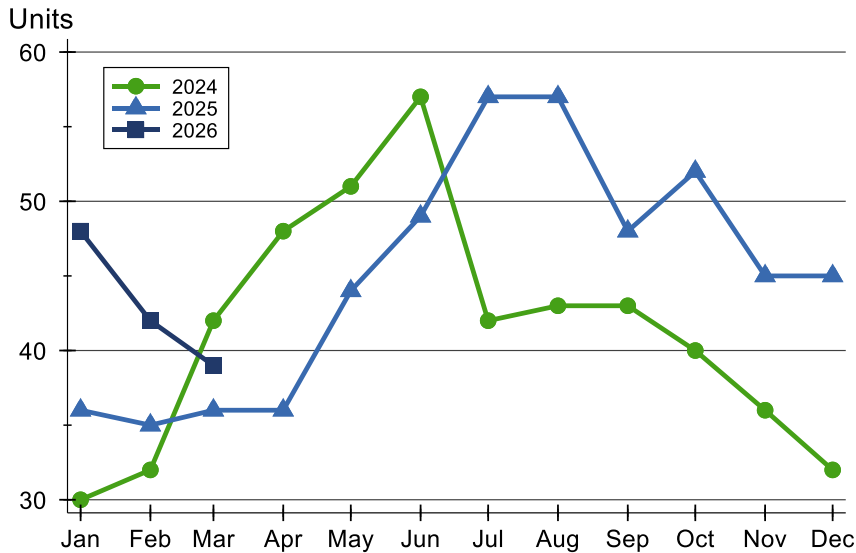
## History of Active Listings





## Dickinson County Active Listings Analysis

### Active Listings by Month



Month	2024	2025	2026
January	30	36	<b>48</b>
February	32	35	<b>42</b>
March	42	36	<b>39</b>
April	48	36	
May	51	44	
June	57	49	
July	42	57	
August	43	57	
September	43	48	
October	40	52	
November	36	45	
December	32	45	

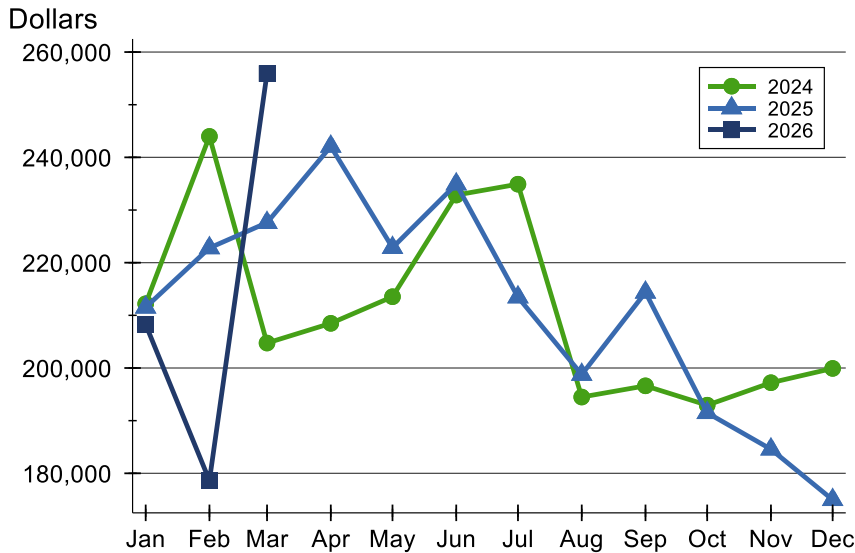
### Active Listings by Price Range

Price Range	Active Listings Number	Percent	Months' Supply	List Price Average	Median	Days on Market Avg.	Med.	Price as % of Orig. Avg.	Med.
Below \$25,000	1	2.6%	1.0	22,000	22,000	7	7	100.0%	100.0%
\$25,000-\$49,999	3	7.7%	N/A	42,667	39,500	29	31	95.3%	100.0%
\$50,000-\$99,999	2	5.1%	0.9	77,400	77,400	64	64	91.8%	91.8%
\$100,000-\$124,999	0	0.0%	N/A	N/A	N/A	N/A	N/A	N/A	N/A
\$125,000-\$149,999	6	15.4%	2.1	136,400	134,500	41	9	96.6%	100.0%
\$150,000-\$174,999	0	0.0%	0.0	N/A	N/A	N/A	N/A	N/A	N/A
\$175,000-\$199,999	6	15.4%	6.0	185,300	179,950	36	15	97.7%	98.8%
\$200,000-\$249,999	8	20.5%	3.0	226,038	224,950	175	41	93.3%	94.8%
\$250,000-\$299,999	3	7.7%	1.6	278,567	279,900	61	30	96.8%	100.0%
\$300,000-\$399,999	7	17.9%	3.8	355,271	374,000	43	48	98.3%	100.0%
\$400,000-\$499,999	1	2.6%	2.0	439,900	439,900	28	28	100.0%	100.0%
\$500,000-\$749,999	1	2.6%	4.0	675,000	675,000	7	7	100.0%	100.0%
\$750,000-\$999,999	0	0.0%	N/A	N/A	N/A	N/A	N/A	N/A	N/A
\$1,000,000 and up	1	2.6%	N/A	1,500,000	1,500,000	27	27	100.0%	100.0%



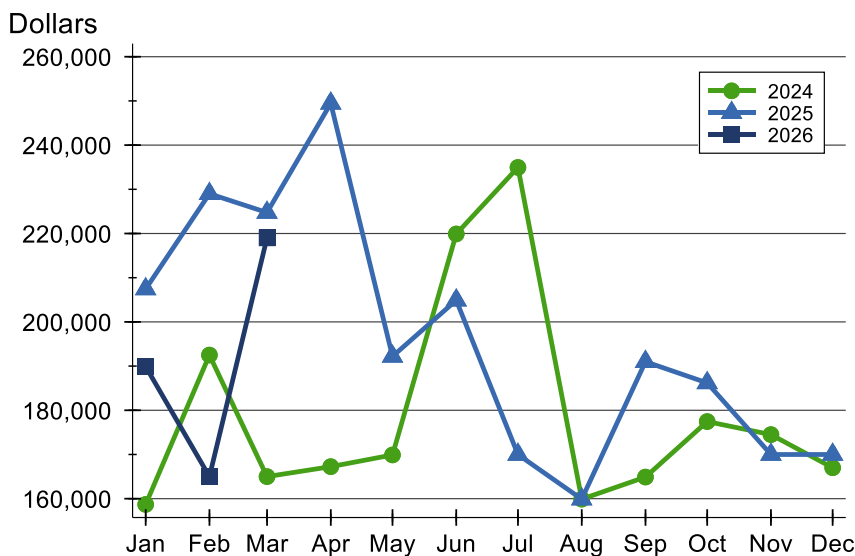
# Dickinson County Active Listings Analysis

## Average Price



Month	2024	2025	2026
January	212,200	211,521	<b>208,271</b>
February	243,981	222,800	<b>178,629</b>
March	204,743	227,603	<b>255,918</b>
April	208,485	242,081	
May	213,539	222,857	
June	232,846	234,916	
July	234,912	213,463	
August	194,486	198,759	
September	196,614	214,365	
October	192,945	191,498	
November	197,210	184,573	
December	199,923	174,977	

## Median Price

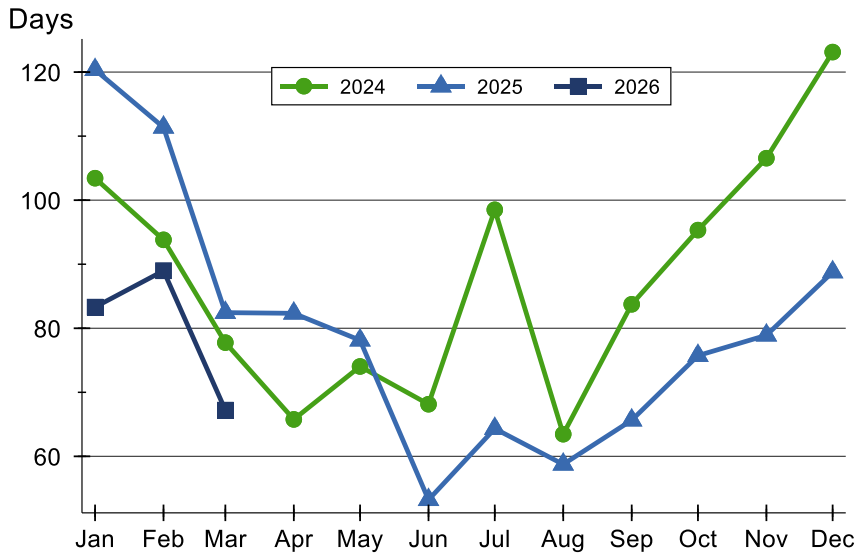


Month	2024	2025	2026
January	158,700	207,450	<b>189,900</b>
February	192,500	229,000	<b>165,000</b>
March	165,000	224,750	<b>219,000</b>
April	167,250	249,450	
May	169,900	192,200	
June	219,900	204,900	
July	234,950	170,000	
August	159,900	159,900	
September	164,900	191,000	
October	177,450	186,200	
November	174,500	170,000	
December	167,000	170,000	



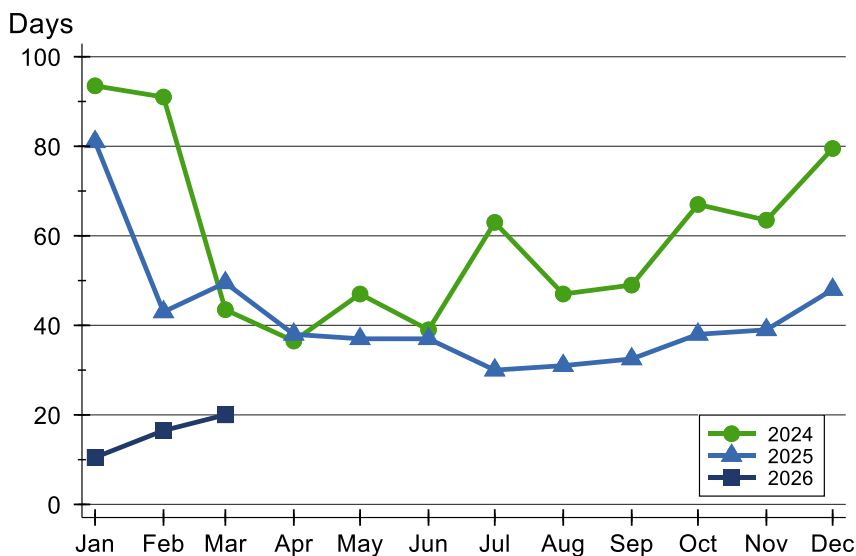
# Dickinson County Active Listings Analysis

## Average DOM



Month	2024	2025	2026
January	103	120	<b>83</b>
February	94	111	<b>89</b>
March	78	82	<b>67</b>
April	66	82	
May	74	78	
June	68	53	
July	99	64	
August	63	59	
September	84	66	
October	95	76	
November	107	79	
December	123	89	

## Median DOM

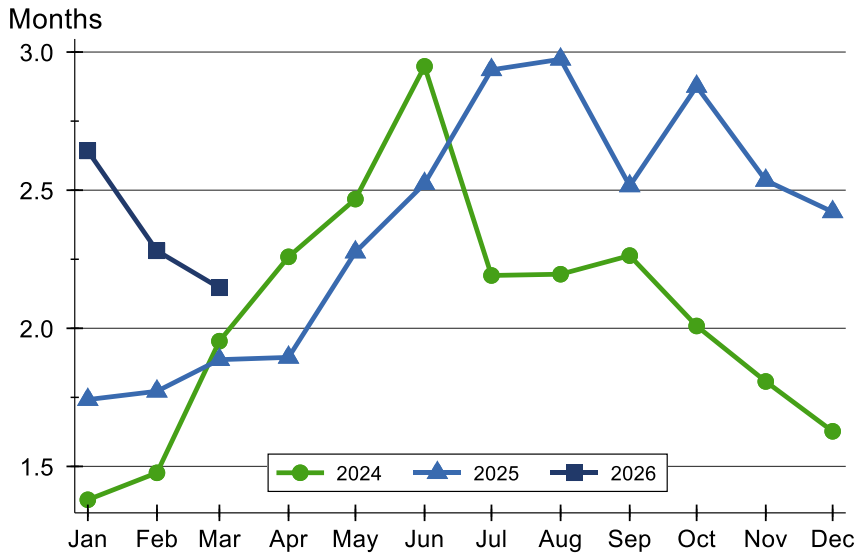


Month	2024	2025	2026
January	94	81	<b>11</b>
February	91	43	<b>17</b>
March	44	50	<b>20</b>
April	37	38	
May	47	37	
June	39	37	
July	63	30	
August	47	31	
September	49	33	
October	67	38	
November	64	39	
December	80	48	



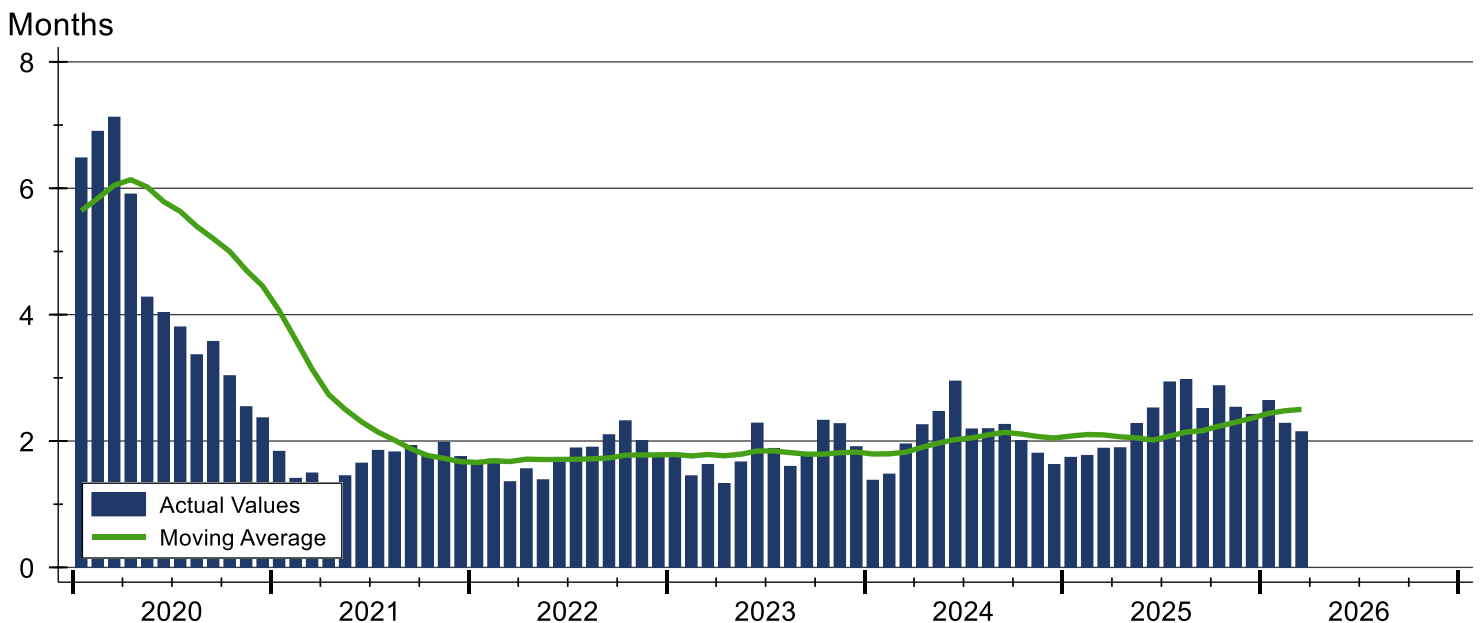
# Dickinson County Months' Supply Analysis

## Months' Supply by Month



Month	2024	2025	2026
January	1.4	1.7	<b>2.6</b>
February	1.5	1.8	<b>2.3</b>
March	2.0	1.9	<b>2.1</b>
April	2.3	1.9	
May	2.5	2.3	
June	2.9	2.5	
July	2.2	2.9	
August	2.2	3.0	
September	2.3	2.5	
October	2.0	2.9	
November	1.8	2.5	
December	1.6	2.4	

## History of Month's Supply





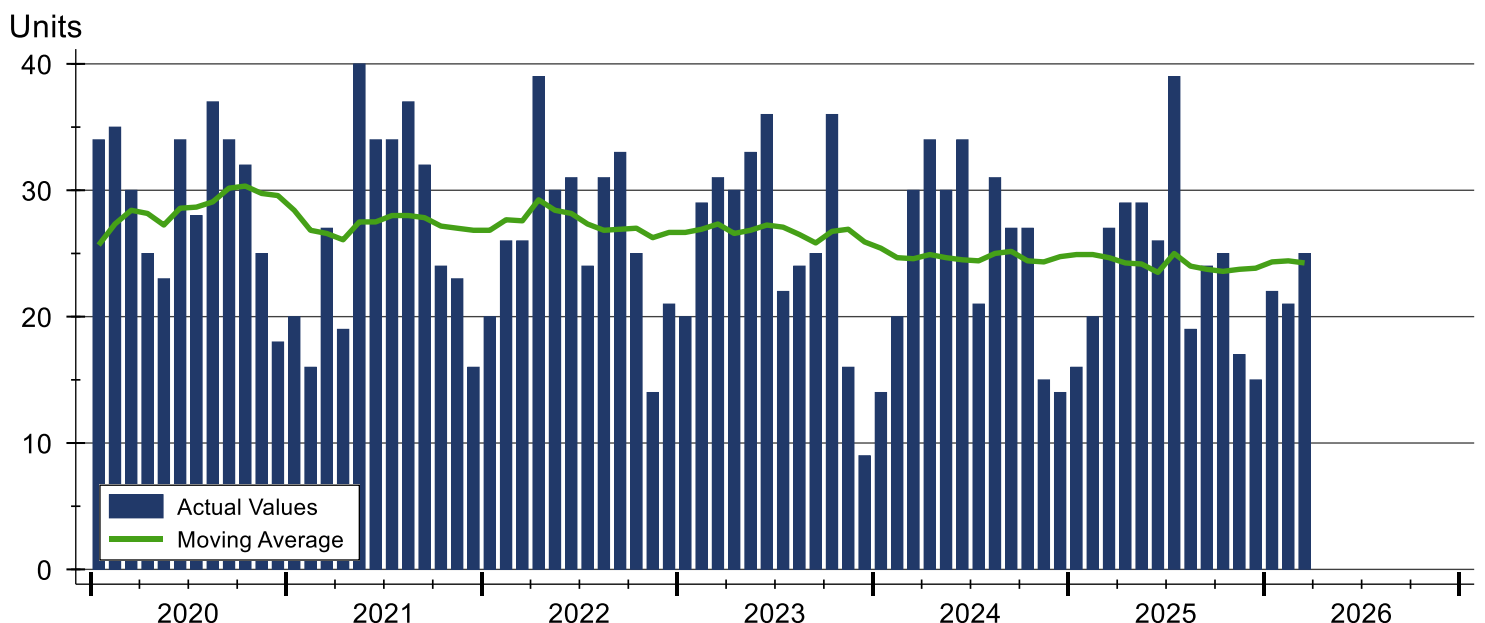
# Dickinson County New Listings Analysis

Summary Statistics for New Listings		2026	March 2025	Change
Current Month	New Listings	25	27	-7.4%
	Volume (1,000s)	6,874	4,890	40.6%
	Average List Price	274,956	181,115	51.8%
	Median List Price	220,000	154,000	42.9%
Year-to-Date	New Listings	68	63	7.9%
	Volume (1,000s)	15,743	12,352	27.5%
	Average List Price	231,510	196,057	18.1%
	Median List Price	195,900	175,000	11.9%

A total of 25 new listings were added in Dickinson County during March, down 7.4% from the same month in 2025. Year-to-date Dickinson County has seen 68 new listings.

The median list price of these homes was \$220,000 up from \$154,000 in 2025.

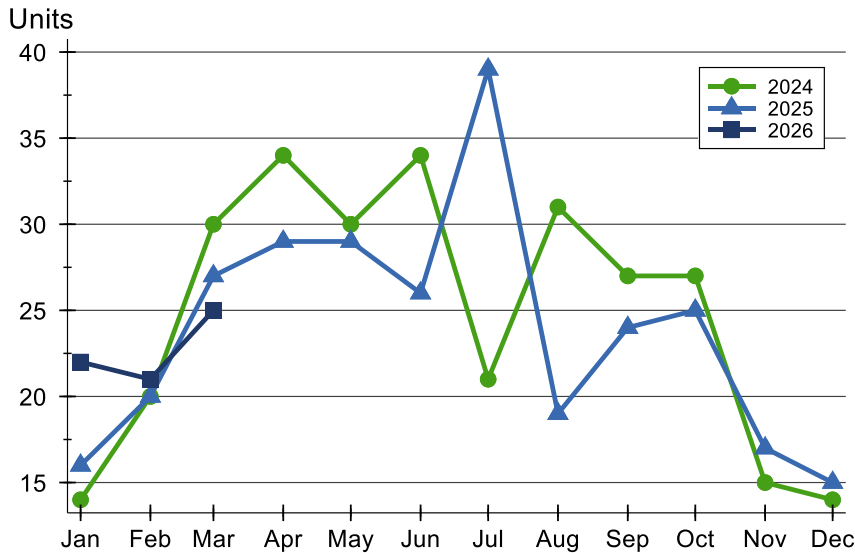
## History of New Listings





## Dickinson County New Listings Analysis

### New Listings by Month



Month	2024	2025	2026
January	14	16	<b>22</b>
February	20	20	<b>21</b>
March	30	27	<b>25</b>
April	34	29	
May	30	29	
June	34	26	
July	21	39	
August	31	19	
September	27	24	
October	27	25	
November	15	17	
December	14	15	

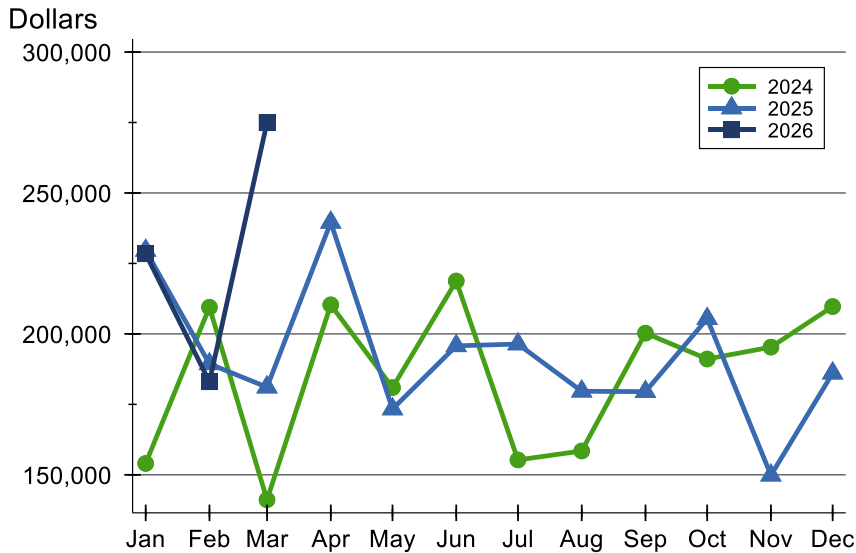
### New Listings by Price Range

Price Range	New Listings		List Price		Days on Market		Price as % of Orig.	
	Number	Percent	Average	Median	Avg.	Med.	Avg.	Med.
Below \$25,000	1	4.0%	22,000	22,000	7	7	100.0%	100.0%
\$25,000-\$49,999	1	4.0%	36,000	36,000	13	13	100.0%	100.0%
\$50,000-\$99,999	2	8.0%	89,450	89,450	4	4	100.0%	100.0%
\$100,000-\$124,999	0	0.0%	N/A	N/A	N/A	N/A	N/A	N/A
\$125,000-\$149,999	3	12.0%	134,967	130,000	7	5	101.3%	100.0%
\$150,000-\$174,999	0	0.0%	N/A	N/A	N/A	N/A	N/A	N/A
\$175,000-\$199,999	4	16.0%	193,225	197,450	5	6	98.9%	100.0%
\$200,000-\$249,999	7	28.0%	229,057	225,000	10	5	99.6%	100.0%
\$250,000-\$299,999	1	4.0%	255,900	255,900	6	6	100.0%	100.0%
\$300,000-\$399,999	4	16.0%	356,225	362,450	10	9	98.3%	100.0%
\$400,000-\$499,999	0	0.0%	N/A	N/A	N/A	N/A	N/A	N/A
\$500,000-\$749,999	1	4.0%	675,000	675,000	7	7	100.0%	100.0%
\$750,000-\$999,999	0	0.0%	N/A	N/A	N/A	N/A	N/A	N/A
\$1,000,000 and up	1	4.0%	1,500,000	1,500,000	28	28	100.0%	100.0%



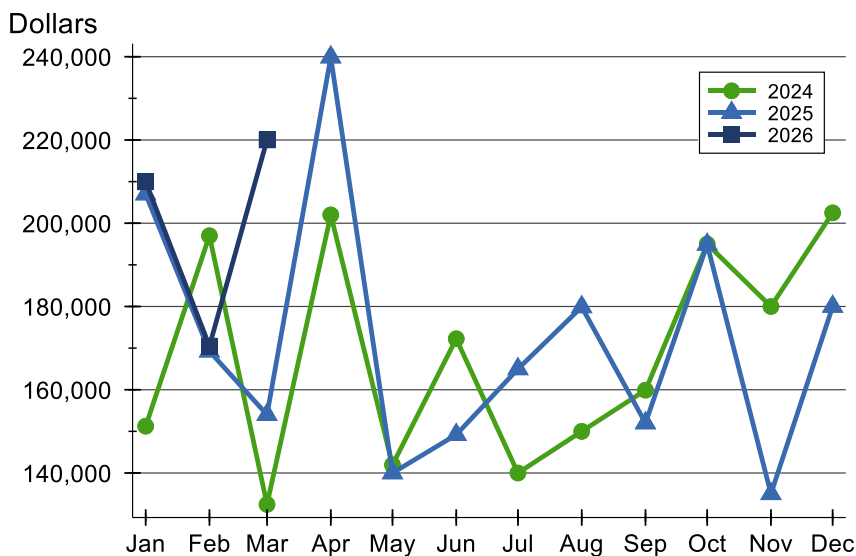
## Dickinson County New Listings Analysis

### Average Price



Month	2024	2025	2026
<b>January</b>	154,050	229,619	<b>228,427</b>
<b>February</b>	209,467	189,380	<b>183,019</b>
<b>March</b>	141,162	181,115	<b>274,956</b>
<b>April</b>	210,329	239,572	
<b>May</b>	180,965	173,352	
<b>June</b>	218,774	195,765	
<b>July</b>	155,295	196,415	
<b>August</b>	158,477	179,655	
<b>September</b>	200,285	179,524	
<b>October</b>	191,107	205,406	
<b>November</b>	195,320	149,871	
<b>December</b>	209,714	186,067	

### Median Price



Month	2024	2025	2026
<b>January</b>	151,250	207,000	<b>209,950</b>
<b>February</b>	197,000	169,250	<b>170,500</b>
<b>March</b>	132,450	154,000	<b>220,000</b>
<b>April</b>	202,000	239,900	
<b>May</b>	141,950	140,000	
<b>June</b>	172,250	149,200	
<b>July</b>	140,000	165,000	
<b>August</b>	150,000	179,900	
<b>September</b>	159,900	152,000	
<b>October</b>	195,000	194,900	
<b>November</b>	180,000	135,000	
<b>December</b>	202,500	180,000	

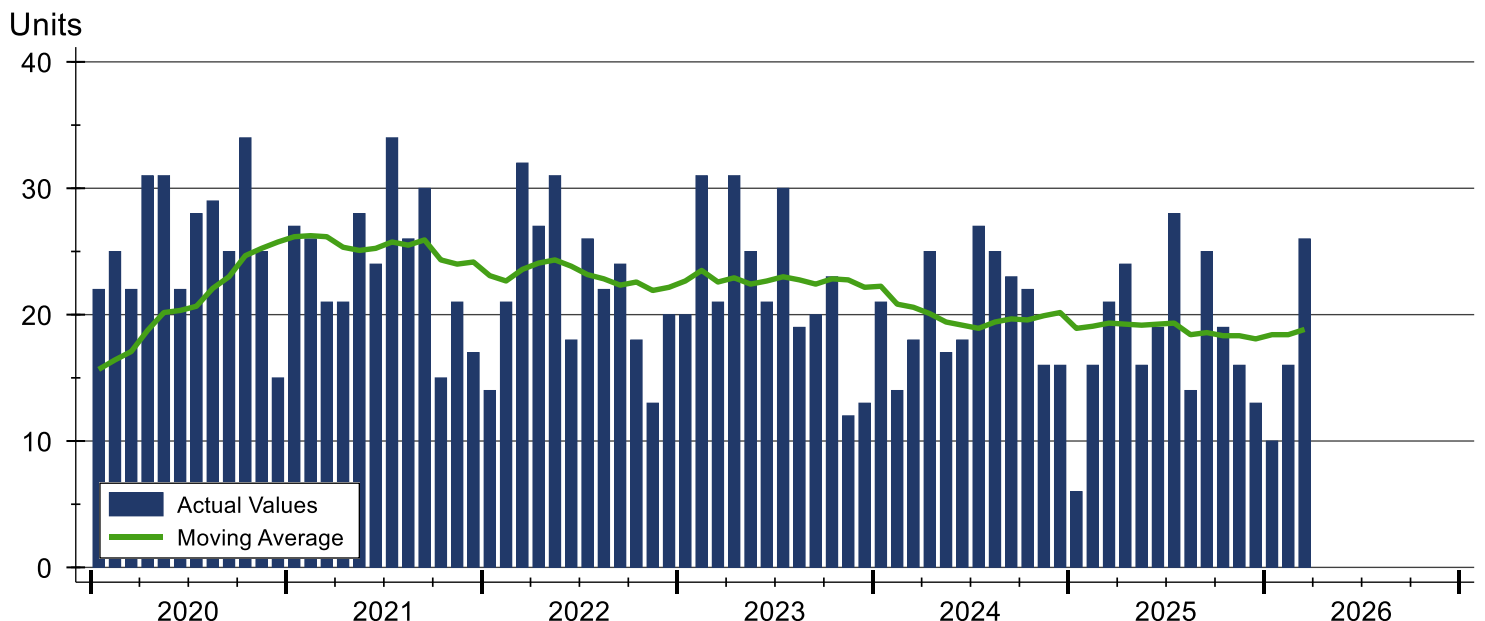


# Dickinson County Contracts Written Analysis

Summary Statistics for Contracts Written		2026	March 2025	Change	2026	Year-to-Date 2025	Change
Contracts Written		26	21	23.8%	52	43	20.9%
Volume (1,000s)		4,377	3,434	27.5%	9,872	7,684	28.5%
Average	Sale Price	168,342	163,524	2.9%	189,837	178,699	6.2%
	Days on Market	64	77	-16.9%	67	67	0.0%
	Percent of Original	93.9%	96.5%	-2.7%	96.9%	95.9%	1.0%
Median	Sale Price	172,750	149,900	15.2%	172,750	155,000	11.5%
	Days on Market	26	18	44.4%	28	13	115.4%
	Percent of Original	100.0%	98.4%	1.6%	100.0%	99.4%	0.6%

A total of 26 contracts for sale were written in Dickinson County during the month of March, up from 21 in 2025. The median list price of these homes was \$172,750, up from \$149,900 the prior year. Half of the homes that went under contract in March were on the market less than 26 days, compared to 18 days in March 2025.

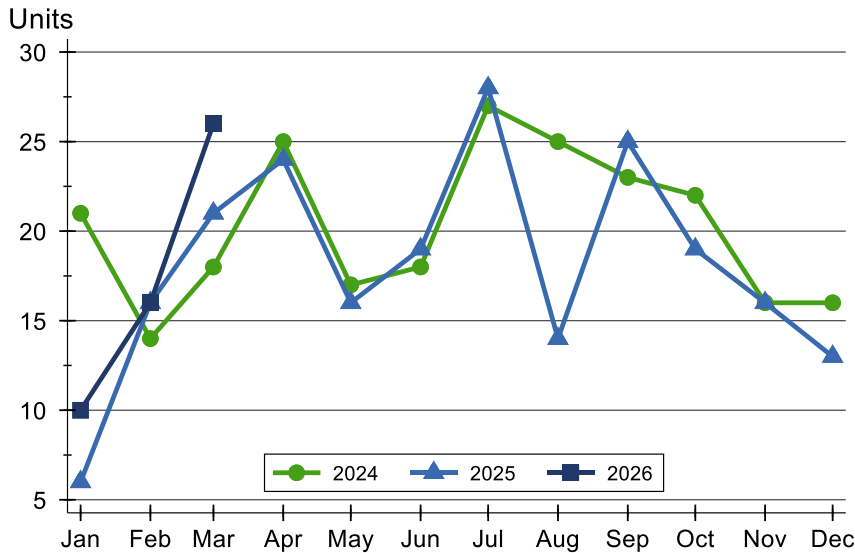
## History of Contracts Written





## Dickinson County Contracts Written Analysis

### Contracts Written by Month



Month	2024	2025	2026
<b>January</b>	21	6	<b>10</b>
<b>February</b>	14	16	<b>16</b>
<b>March</b>	18	21	<b>26</b>
<b>April</b>	25	24	
<b>May</b>	17	16	
<b>June</b>	18	19	
<b>July</b>	27	28	
<b>August</b>	25	14	
<b>September</b>	23	25	
<b>October</b>	22	19	
<b>November</b>	16	16	
<b>December</b>	16	13	

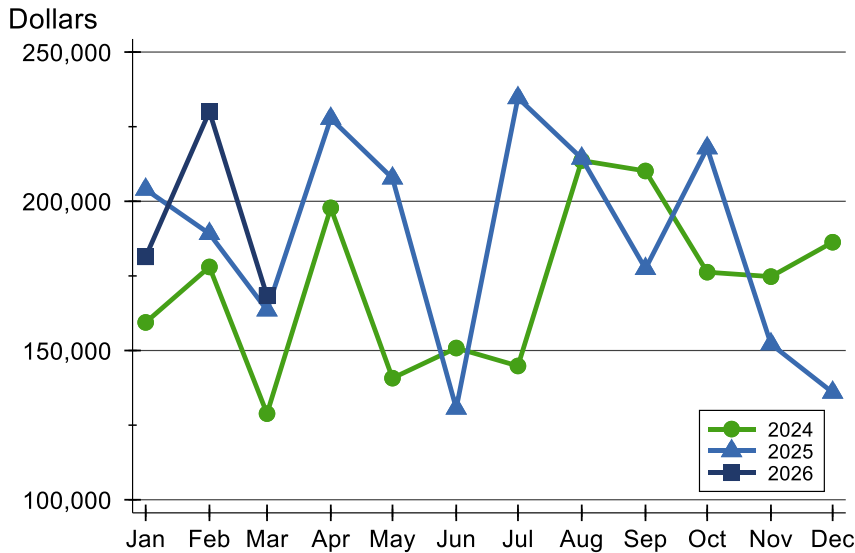
### Contracts Written by Price Range

Price Range	Contracts Written		List Price		Days on Market		Price as % of Orig.	
	Number	Percent	Average	Median	Avg.	Med.	Avg.	Med.
Below \$25,000	1	3.8%	20,000	20,000	30	30	80.4%	80.4%
\$25,000-\$49,999	4	15.4%	42,125	41,750	106	93	85.9%	100.0%
\$50,000-\$99,999	2	7.7%	79,450	79,450	16	16	83.3%	83.3%
\$100,000-\$124,999	2	7.7%	123,450	123,450	167	167	98.8%	98.8%
\$125,000-\$149,999	2	7.7%	137,450	137,450	145	145	93.3%	93.3%
\$150,000-\$174,999	2	7.7%	162,750	162,750	93	93	89.9%	89.9%
\$175,000-\$199,999	6	23.1%	185,400	183,750	37	10	98.3%	100.0%
\$200,000-\$249,999	2	7.7%	242,500	242,500	3	3	100.0%	100.0%
\$250,000-\$299,999	2	7.7%	282,450	282,450	48	48	98.3%	98.3%
\$300,000-\$399,999	3	11.5%	339,967	325,000	14	9	100.0%	100.0%
\$400,000-\$499,999	0	0.0%	N/A	N/A	N/A	N/A	N/A	N/A
\$500,000-\$749,999	0	0.0%	N/A	N/A	N/A	N/A	N/A	N/A
\$750,000-\$999,999	0	0.0%	N/A	N/A	N/A	N/A	N/A	N/A
\$1,000,000 and up	0	0.0%	N/A	N/A	N/A	N/A	N/A	N/A



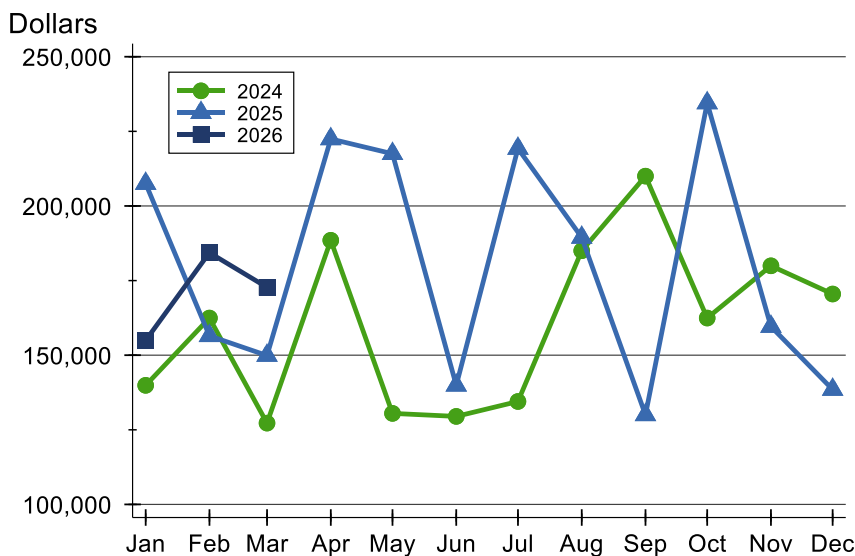
## Dickinson County Contracts Written Analysis

### Average Price



Month	2024	2025	2026
<b>January</b>	159,419	203,983	<b>181,390</b>
<b>February</b>	178,010	189,134	<b>230,047</b>
<b>March</b>	128,864	163,524	<b>168,342</b>
<b>April</b>	197,796	227,733	
<b>May</b>	140,750	207,738	
<b>June</b>	150,839	130,621	
<b>July</b>	144,833	234,654	
<b>August</b>	213,648	214,393	
<b>September</b>	210,157	177,411	
<b>October</b>	176,252	217,853	
<b>November</b>	174,763	152,166	
<b>December</b>	186,288	135,969	

### Median Price

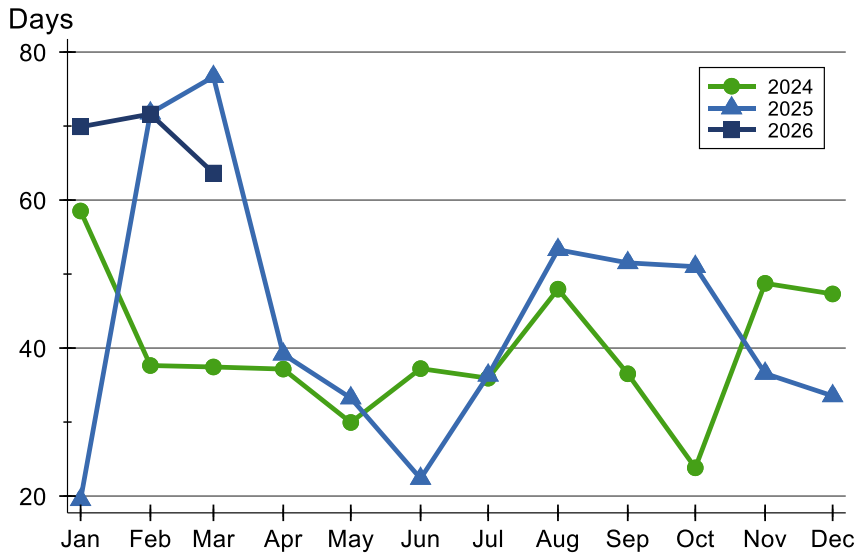


Month	2024	2025	2026
<b>January</b>	139,900	207,500	<b>154,950</b>
<b>February</b>	162,450	156,500	<b>184,350</b>
<b>March</b>	127,250	149,900	<b>172,750</b>
<b>April</b>	188,500	222,450	
<b>May</b>	130,500	217,500	
<b>June</b>	129,500	139,900	
<b>July</b>	134,500	219,250	
<b>August</b>	185,000	189,450	
<b>September</b>	210,000	130,000	
<b>October</b>	162,450	234,500	
<b>November</b>	179,950	159,600	
<b>December</b>	170,500	138,500	



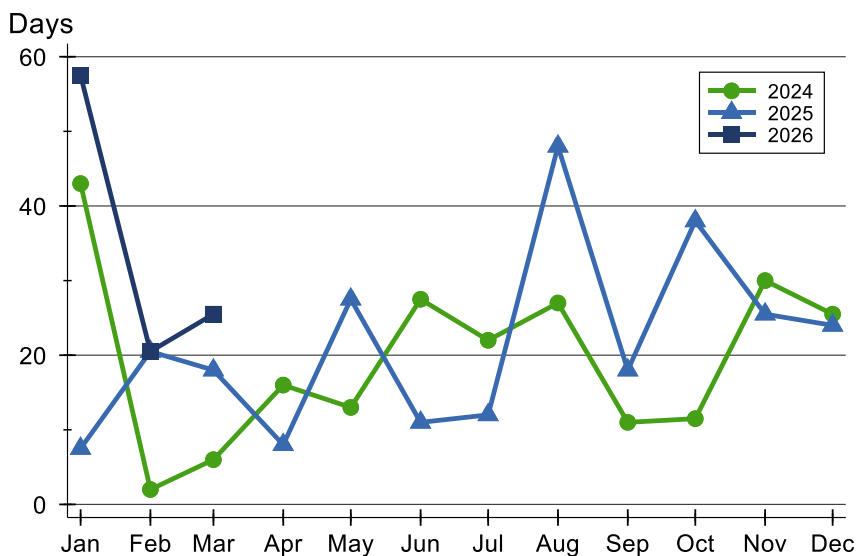
## Dickinson County Contracts Written Analysis

### Average DOM



Month	2024	2025	2026
January	59	20	<b>70</b>
February	38	72	<b>72</b>
March	37	77	<b>64</b>
April	37	39	
May	30	33	
June	37	22	
July	36	36	
August	48	53	
September	37	52	
October	24	51	
November	49	37	
December	47	34	

### Median DOM



Month	2024	2025	2026
January	43	8	<b>58</b>
February	2	21	<b>21</b>
March	6	18	<b>26</b>
April	16	8	
May	13	28	
June	28	11	
July	22	12	
August	27	48	
September	11	18	
October	12	38	
November	30	26	
December	26	24	



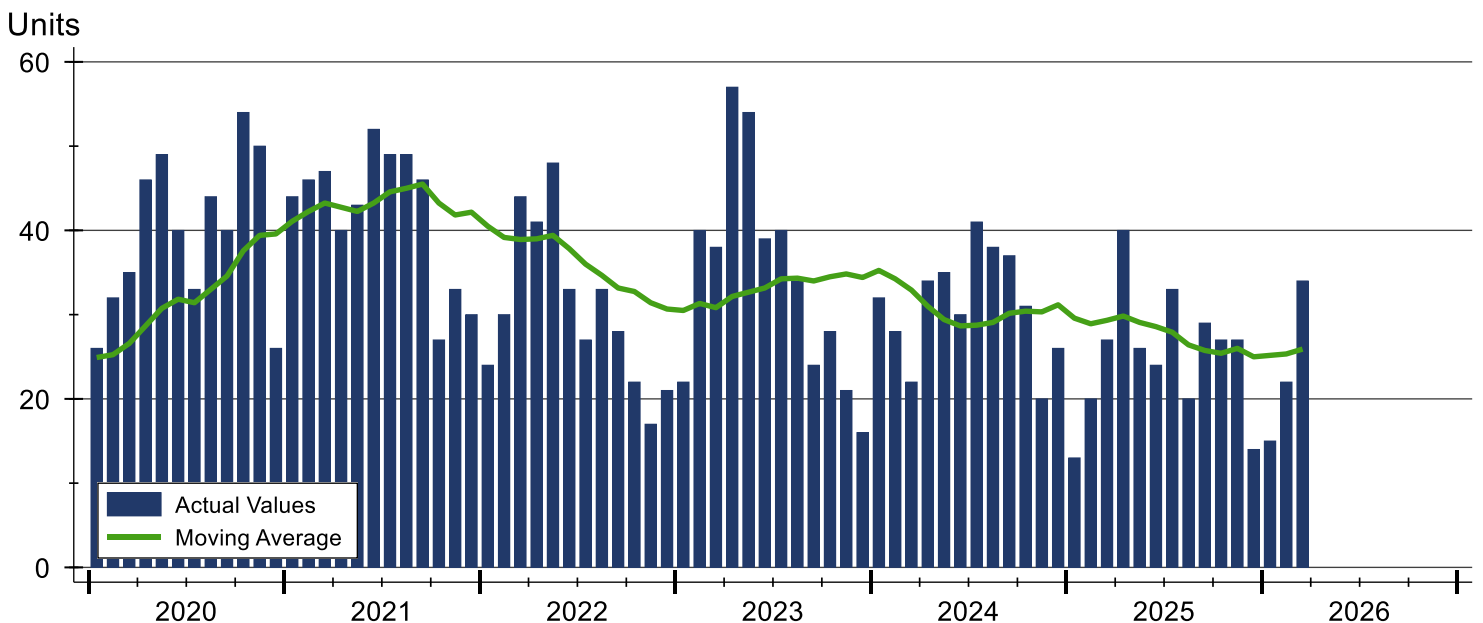
# Dickinson County Pending Contracts Analysis

Summary Statistics for Pending Contracts		2026	End of March 2025	Change
Pending Contracts		34	27	25.9%
Volume (1,000s)		7,010	4,312	62.6%
Average	List Price	206,190	159,704	29.1%
	Days on Market	77	97	-20.6%
	Percent of Original	99.2%	96.9%	2.4%
Median	List Price	182,450	145,000	25.8%
	Days on Market	25	40	-37.5%
	Percent of Original	100.0%	100.0%	0.0%

A total of 34 listings in Dickinson County had contracts pending at the end of March, up from 27 contracts pending at the end of March 2025.

Pending contracts reflect listings with a contract in place at the end of the month. In contrast, contracts written measures the number of listings put under contract during the month.

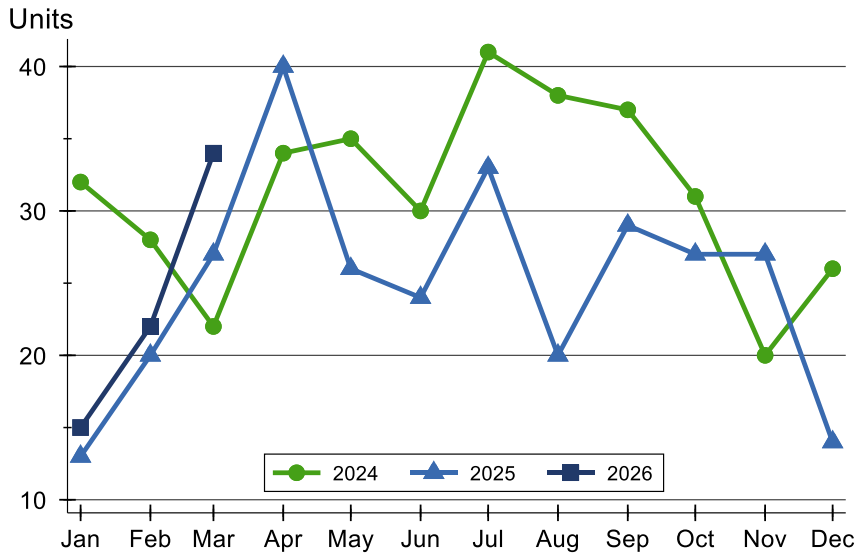
## History of Pending Contracts





## Dickinson County Pending Contracts Analysis

### Pending Contracts by Month



Month	2024	2025	2026
January	32	13	15
February	28	20	22
March	22	27	34
April	34	40	40
May	35	26	26
June	30	24	24
July	41	33	33
August	38	20	20
September	37	29	29
October	31	27	27
November	20	27	27
December	26	14	14

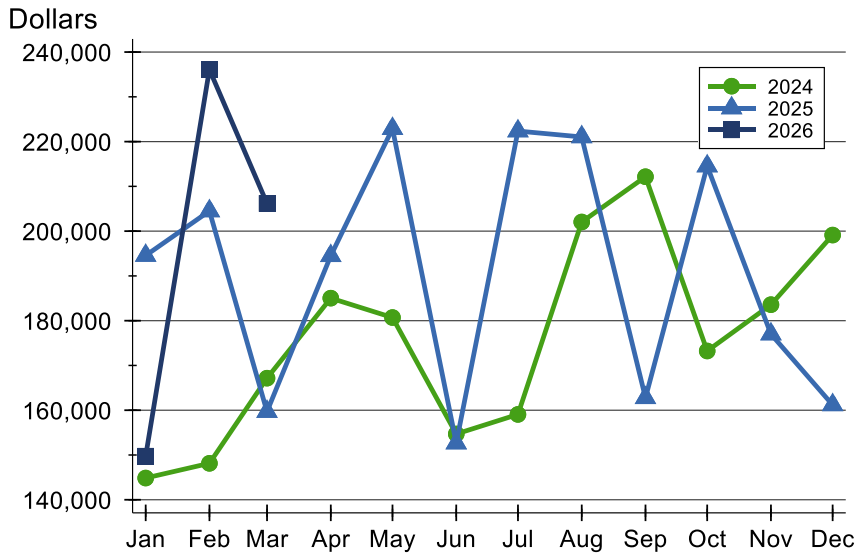
### Pending Contracts by Price Range

Price Range	Pending Contracts		List Price		Days on Market		Price as % of Orig.	
	Number	Percent	Average	Median	Avg.	Med.	Avg.	Med.
Below \$25,000	0	0.0%	N/A	N/A	N/A	N/A	N/A	N/A
\$25,000-\$49,999	4	11.8%	42,125	41,750	106	93	85.9%	100.0%
\$50,000-\$99,999	1	2.9%	99,900	99,900	5	5	100.0%	100.0%
\$100,000-\$124,999	2	5.9%	123,450	123,450	167	167	98.8%	98.8%
\$125,000-\$149,999	3	8.8%	139,633	139,999	139	127	95.6%	100.0%
\$150,000-\$174,999	4	11.8%	159,375	158,500	79	78	95.0%	100.0%
\$175,000-\$199,999	7	20.6%	186,043	189,900	78	11	98.6%	100.0%
\$200,000-\$249,999	3	8.8%	235,000	240,000	3	3	100.0%	100.0%
\$250,000-\$299,999	4	11.8%	279,188	282,450	64	48	99.2%	100.0%
\$300,000-\$399,999	5	14.7%	345,940	330,000	59	9	116.0%	100.0%
\$400,000-\$499,999	0	0.0%	N/A	N/A	N/A	N/A	N/A	N/A
\$500,000-\$749,999	1	2.9%	585,000	585,000	16	16	100.0%	100.0%
\$750,000-\$999,999	0	0.0%	N/A	N/A	N/A	N/A	N/A	N/A
\$1,000,000 and up	0	0.0%	N/A	N/A	N/A	N/A	N/A	N/A



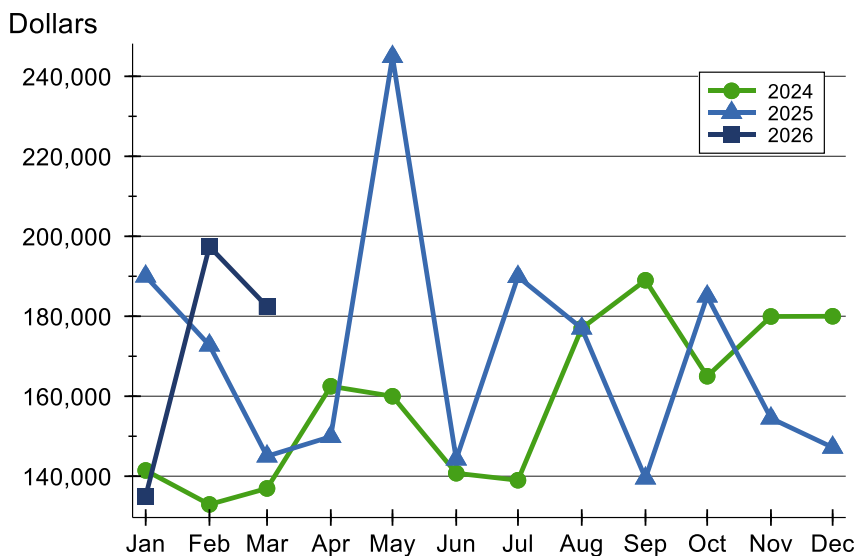
# Dickinson County Pending Contracts Analysis

## Average Price



Month	2024	2025	2026
January	144,853	194,554	<b>149,745</b>
February	148,137	204,503	<b>236,097</b>
March	167,161	159,704	<b>206,190</b>
April	185,033	194,492	
May	180,705	222,888	
June	154,698	152,658	
July	159,064	222,355	
August	202,043	221,045	
September	212,155	162,777	
October	173,237	214,538	
November	183,580	177,005	
December	199,127	161,184	

## Median Price

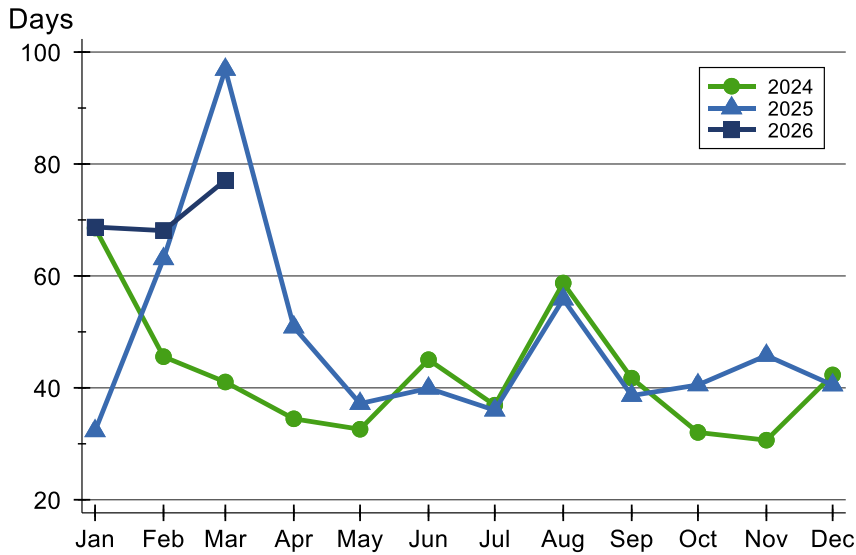


Month	2024	2025	2026
January	141,450	190,000	<b>135,000</b>
February	132,950	172,750	<b>197,450</b>
March	136,950	145,000	<b>182,450</b>
April	162,500	149,900	
May	160,000	244,900	
June	140,750	144,250	
July	139,000	189,900	
August	177,000	177,000	
September	189,000	139,500	
October	165,000	185,000	
November	179,950	154,500	
December	180,000	147,200	



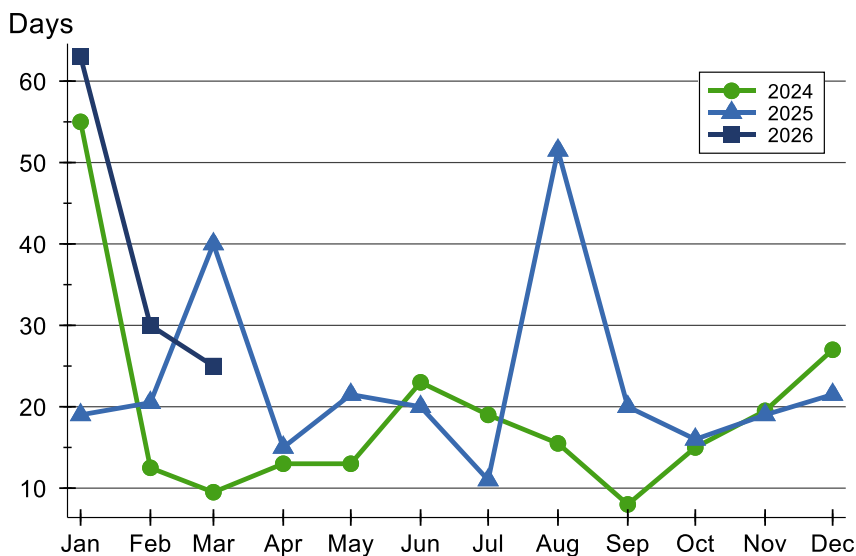
# Dickinson County Pending Contracts Analysis

## Average DOM



Month	2024	2025	2026
January	69	32	<b>69</b>
February	46	63	<b>68</b>
March	41	97	<b>77</b>
April	34	51	
May	33	37	
June	45	40	
July	37	36	
August	59	56	
September	42	39	
October	32	41	
November	31	46	
December	42	41	

## Median DOM



Month	2024	2025	2026
January	55	19	<b>63</b>
February	13	21	<b>30</b>
March	10	40	<b>25</b>
April	13	15	
May	13	22	
June	23	20	
July	19	11	
August	16	52	
September	8	20	
October	15	16	
November	20	19	
December	27	22	