



**March  
2026**

# Flint Hills MLS Statistics



**FLINT HILLS  
ASSOCIATION  
OF REALTORS®**

## Marshall County Housing Report



### Market Overview

#### Marshall County Home Sales Rose in March

Total home sales in Marshall County rose last month to 1 unit, compared to 0 units in March 2025. Total sales volume was \$0.1 million, essentially the same as home sales volume from a year earlier.

The median sale price in March was \$97,500. Homes that sold in March were typically on the market for 442 days and sold for 88.7% of their list prices.

#### Marshall County Active Listings Down at End of March

The total number of active listings in Marshall County at the end of March was 1 units, down from 2 at the same point in 2025. This represents a 2.4 months' supply of homes available for sale. The median list price of homes on the market at the end of March was \$154,900.

During March, a total of 1 contract was written up from 0 in March 2025. At the end of the month, there was 1 contract still pending.

### Report Contents

- Summary Statistics – Page 2
- Closed Listing Analysis – Page 3
- Active Listings Analysis – Page 7
- Months' Supply Analysis – Page 11
- New Listings Analysis – Page 12
- Contracts Written Analysis – Page 15
- Pending Contracts Analysis – Page 19

### Contact Information

Margaret Pendleton, Association Executive  
 Flint Hills Association of REALTORS®  
 205 S. Seth Child Road  
 Manhattan, KS 66502  
 785-776-1203  
[ae@flinthillsrealtors.net](mailto:ae@flinthillsrealtors.net)  
[www.flinthillsrealtors.net](http://www.flinthillsrealtors.net)



**March  
2026**

# Flint Hills MLS Statistics



**FLINT HILLS  
ASSOCIATION  
OF REALTORS®**

## Marshall County Summary Statistics

March MLS Statistics Three-year History		Current Month			Year-to-Date		
		2026	2025	2024	2026	2025	2024
<b>Home Sales</b>		<b>1</b>	<b>0</b>	<b>2</b>	<b>3</b>	<b>0</b>	<b>3</b>
Change from prior year		N/A	-100.0%	100.0%	N/A	-100.0%	200.0%
<b>Active Listings</b>		<b>1</b>	<b>2</b>	<b>2</b>	<b>N/A</b>	<b>N/A</b>	<b>N/A</b>
Change from prior year		-50.0%	0.0%	-33.3%			
<b>Months' Supply</b>		<b>2.4</b>	<b>4.8</b>	<b>2.2</b>	<b>N/A</b>	<b>N/A</b>	<b>N/A</b>
Change from prior year		-50.0%	118.2%	-38.9%			
<b>New Listings</b>		<b>1</b>	<b>1</b>	<b>0</b>	<b>2</b>	<b>1</b>	<b>3</b>
Change from prior year		0.0%	N/A	-100.0%	100.0%	-66.7%	0.0%
<b>Contracts Written</b>		<b>1</b>	<b>0</b>	<b>2</b>	<b>3</b>	<b>0</b>	<b>2</b>
Change from prior year		N/A	-100.0%	N/A	N/A	-100.0%	100.0%
<b>Pending Contracts</b>		<b>1</b>	<b>0</b>	<b>1</b>	<b>N/A</b>	<b>N/A</b>	<b>N/A</b>
Change from prior year		N/A	-100.0%	N/A			
<b>Sales Volume (1,000s)</b>		<b>98</b>	<b>0</b>	<b>340</b>	<b>408</b>	<b>0</b>	<b>565</b>
Change from prior year		N/A	-100.0%	423.1%	N/A	-100.0%	769.2%
Average	<b>Sale Price</b>	<b>97,500</b>	<b>N/A</b>	<b>170,000</b>	<b>135,833</b>	<b>N/A</b>	<b>188,333</b>
	Change from prior year	N/A	N/A	161.5%	N/A	N/A	189.7%
	<b>List Price of Actives</b>	<b>154,900</b>	<b>141,950</b>	<b>120,000</b>	<b>N/A</b>	<b>N/A</b>	<b>N/A</b>
	Change from prior year	9.1%	18.3%	-41.4%			
	<b>Days on Market</b>	<b>442</b>	<b>N/A</b>	<b>49</b>	<b>190</b>	<b>N/A</b>	<b>48</b>
Change from prior year	N/A	N/A	390.0%	N/A	N/A	380.0%	
<b>Percent of List</b>	<b>88.7%</b>	<b>N/A</b>	<b>96.9%</b>	<b>94.8%</b>	<b>N/A</b>	<b>94.0%</b>	
Change from prior year	N/A	N/A	16.3%	N/A	N/A	12.8%	
<b>Percent of Original</b>	<b>61.0%</b>	<b>N/A</b>	<b>96.9%</b>	<b>85.5%</b>	<b>N/A</b>	<b>91.9%</b>	
Change from prior year	N/A	N/A	16.3%	N/A	N/A	10.3%	
Median	<b>Sale Price</b>	<b>97,500</b>	<b>N/A</b>	<b>170,000</b>	<b>130,000</b>	<b>N/A</b>	<b>225,000</b>
	Change from prior year	N/A	N/A	161.5%	N/A	N/A	246.2%
	<b>List Price of Actives</b>	<b>154,900</b>	<b>141,950</b>	<b>120,000</b>	<b>N/A</b>	<b>N/A</b>	<b>N/A</b>
	Change from prior year	9.1%	18.3%	-55.4%			
	<b>Days on Market</b>	<b>442</b>	<b>N/A</b>	<b>49</b>	<b>113</b>	<b>N/A</b>	<b>47</b>
Change from prior year	N/A	N/A	390.0%	N/A	N/A	370.0%	
<b>Percent of List</b>	<b>88.7%</b>	<b>N/A</b>	<b>96.9%</b>	<b>95.6%</b>	<b>N/A</b>	<b>93.8%</b>	
Change from prior year	N/A	N/A	16.3%	N/A	N/A	12.6%	
<b>Percent of Original</b>	<b>61.0%</b>	<b>N/A</b>	<b>96.9%</b>	<b>95.6%</b>	<b>N/A</b>	<b>93.8%</b>	
Change from prior year	N/A	N/A	16.3%	N/A	N/A	12.6%	

Note: Year-to-date statistics cannot be calculated for Active Listings, Months' Supply and Pending Contracts.



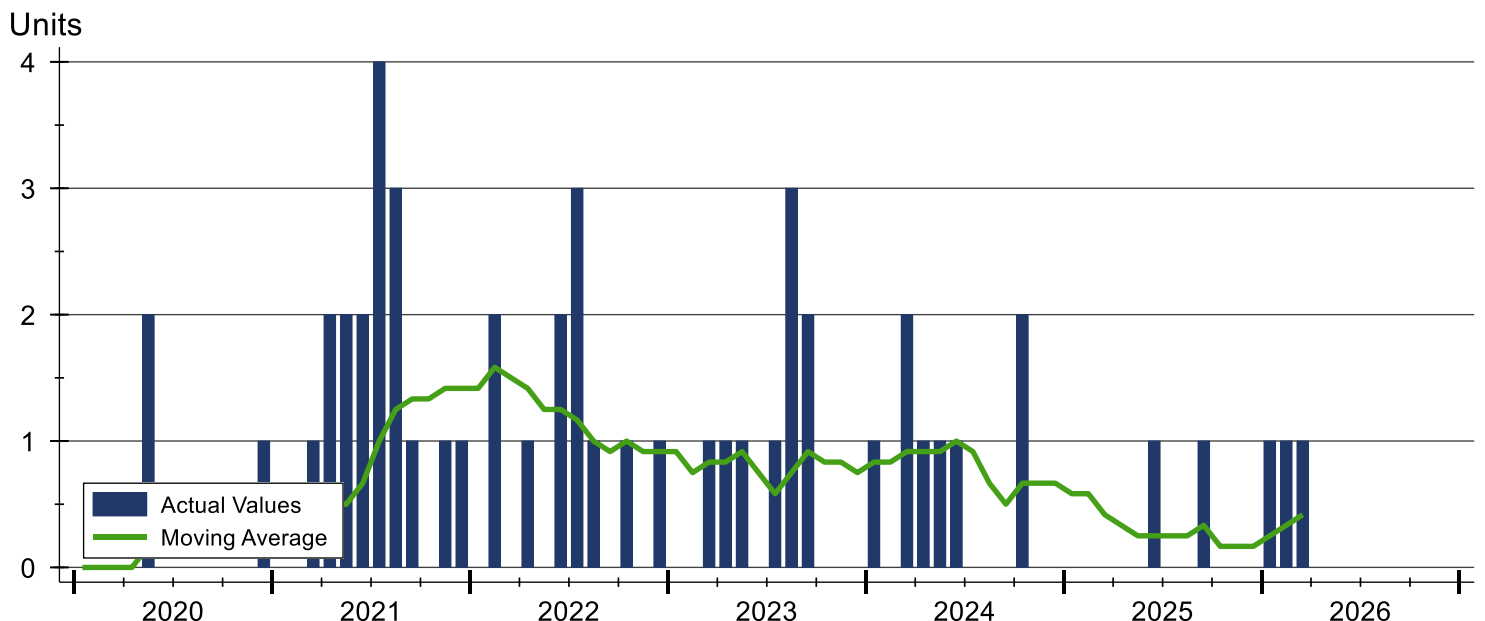
# Marshall County Closed Listings Analysis

Summary Statistics for Closed Listings		2026	March 2025	Change	2026	Year-to-Date 2025	Change
Closed Listings		1	0	N/A	3	0	N/A
Volume (1,000s)		98	0	N/A	408	0	N/A
Months' Supply		2.4	4.8	-50.0%	N/A	N/A	N/A
Average	Sale Price	97,500	N/A	N/A	135,833	N/A	N/A
	Days on Market	442	N/A	N/A	190	N/A	N/A
	Percent of List	88.7%	N/A	N/A	94.8%	N/A	N/A
	Percent of Original	61.0%	N/A	N/A	85.5%	N/A	N/A
Median	Sale Price	97,500	N/A	N/A	130,000	N/A	N/A
	Days on Market	442	N/A	N/A	113	N/A	N/A
	Percent of List	88.7%	N/A	N/A	95.6%	N/A	N/A
	Percent of Original	61.0%	N/A	N/A	95.6%	N/A	N/A

A total of 1 home sold in Marshall County in March, up from 0 units in March 2025. Total sales volume rose to \$0.1 million compared to \$0.0 million in the previous year.

The median sale price in March was \$97,500. Average days on market for the same time period was 442 days.

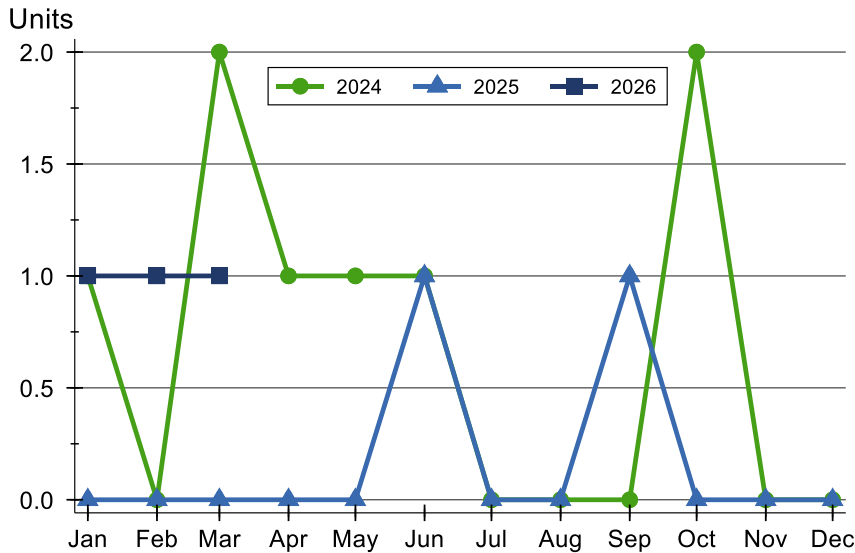
## History of Closed Listings





## Marshall County Closed Listings Analysis

### Closed Listings by Month



Month	2024	2025	2026
January	1	0	1
February	0	0	1
March	2	0	1
April	1	0	0
May	1	0	0
June	1	1	0
July	0	0	0
August	0	0	0
September	0	1	0
October	2	0	0
November	0	0	0
December	0	0	0

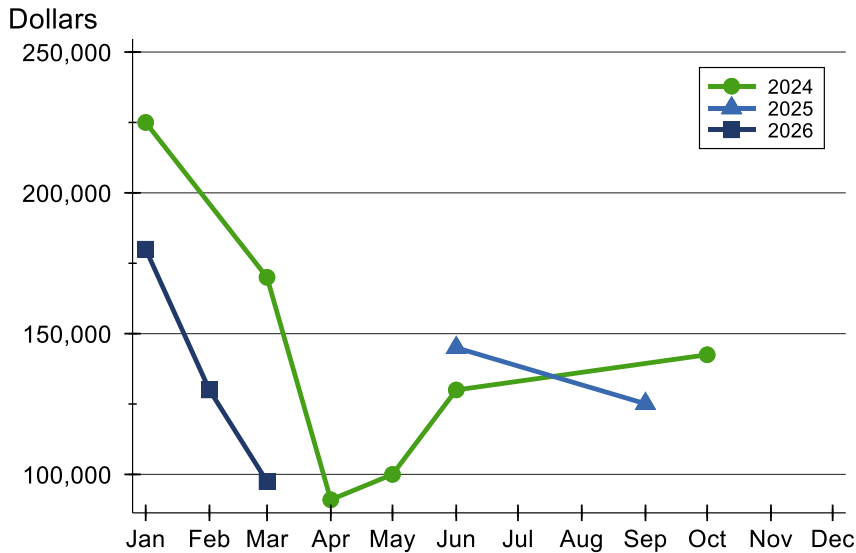
### Closed Listings by Price Range

Price Range	Sales		Months' Supply	Sale Price		Days on Market		Price as % of List		Price as % of Orig.	
	Number	Percent		Average	Median	Avg.	Med.	Avg.	Med.	Avg.	Med.
Below \$25,000	0	0.0%	N/A	N/A	N/A	N/A	N/A	N/A	N/A	N/A	N/A
\$25,000-\$49,999	0	0.0%	N/A	N/A	N/A	N/A	N/A	N/A	N/A	N/A	N/A
\$50,000-\$99,999	1	100.0%	0.0	97,500	97,500	442	442	88.7%	88.7%	61.0%	61.0%
\$100,000-\$124,999	0	0.0%	N/A	N/A	N/A	N/A	N/A	N/A	N/A	N/A	N/A
\$125,000-\$149,999	0	0.0%	N/A	N/A	N/A	N/A	N/A	N/A	N/A	N/A	N/A
\$150,000-\$174,999	0	0.0%	N/A	N/A	N/A	N/A	N/A	N/A	N/A	N/A	N/A
\$175,000-\$199,999	0	0.0%	N/A	N/A	N/A	N/A	N/A	N/A	N/A	N/A	N/A
\$200,000-\$249,999	0	0.0%	N/A	N/A	N/A	N/A	N/A	N/A	N/A	N/A	N/A
\$250,000-\$299,999	0	0.0%	N/A	N/A	N/A	N/A	N/A	N/A	N/A	N/A	N/A
\$300,000-\$399,999	0	0.0%	N/A	N/A	N/A	N/A	N/A	N/A	N/A	N/A	N/A
\$400,000-\$499,999	0	0.0%	N/A	N/A	N/A	N/A	N/A	N/A	N/A	N/A	N/A
\$500,000-\$749,999	0	0.0%	N/A	N/A	N/A	N/A	N/A	N/A	N/A	N/A	N/A
\$750,000-\$999,999	0	0.0%	N/A	N/A	N/A	N/A	N/A	N/A	N/A	N/A	N/A
\$1,000,000 and up	0	0.0%	N/A	N/A	N/A	N/A	N/A	N/A	N/A	N/A	N/A



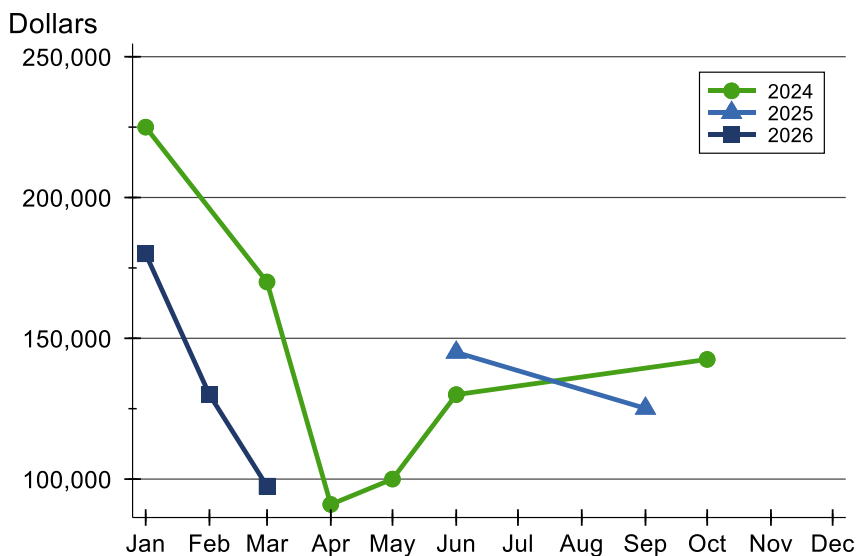
# Marshall County Closed Listings Analysis

## Average Price



Month	2024	2025	2026
<b>January</b>	225,000	N/A	<b>180,000</b>
<b>February</b>	N/A	N/A	<b>130,000</b>
<b>March</b>	170,000	N/A	<b>97,500</b>
<b>April</b>	91,000	N/A	
<b>May</b>	100,000	N/A	
<b>June</b>	130,000	145,000	
<b>July</b>	N/A	N/A	
<b>August</b>	N/A	N/A	
<b>September</b>	N/A	125,104	
<b>October</b>	142,500	N/A	
<b>November</b>	N/A	N/A	
<b>December</b>	N/A	N/A	

## Median Price

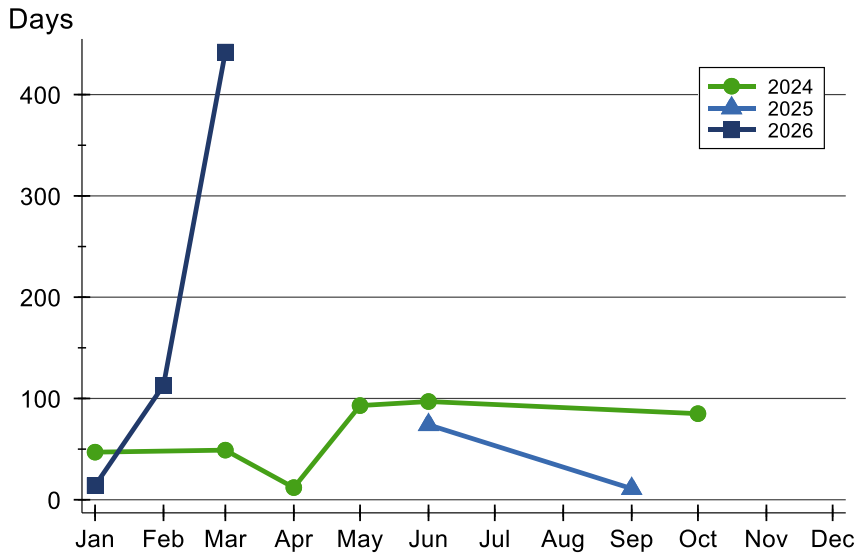


Month	2024	2025	2026
<b>January</b>	225,000	N/A	<b>180,000</b>
<b>February</b>	N/A	N/A	<b>130,000</b>
<b>March</b>	170,000	N/A	<b>97,500</b>
<b>April</b>	91,000	N/A	
<b>May</b>	100,000	N/A	
<b>June</b>	130,000	145,000	
<b>July</b>	N/A	N/A	
<b>August</b>	N/A	N/A	
<b>September</b>	N/A	125,104	
<b>October</b>	142,500	N/A	
<b>November</b>	N/A	N/A	
<b>December</b>	N/A	N/A	



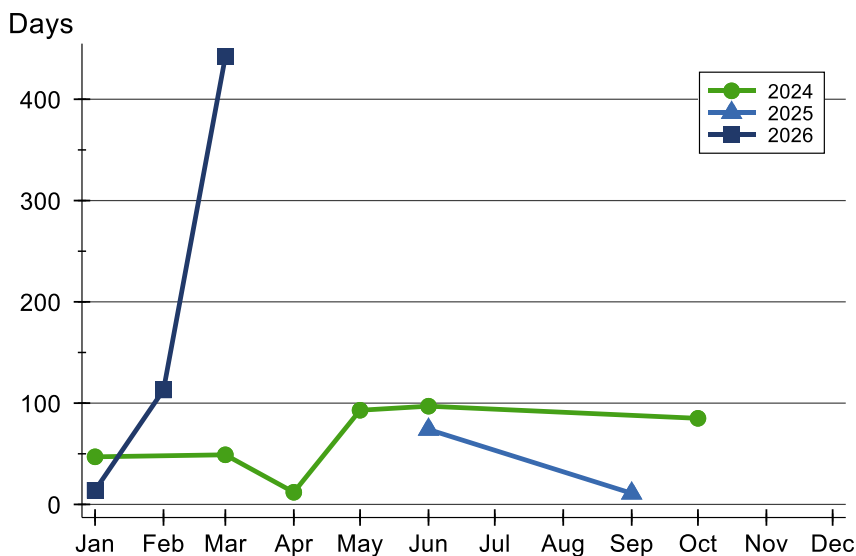
# Marshall County Closed Listings Analysis

## Average DOM



Month	2024	2025	2026
January	47	N/A	14
February	N/A	N/A	113
March	49	N/A	442
April	12	N/A	
May	93	N/A	
June	97	74	
July	N/A	N/A	
August	N/A	N/A	
September	N/A	11	
October	85	N/A	
November	N/A	N/A	
December	N/A	N/A	

## Median DOM



Month	2024	2025	2026
January	47	N/A	14
February	N/A	N/A	113
March	49	N/A	442
April	12	N/A	
May	93	N/A	
June	97	74	
July	N/A	N/A	
August	N/A	N/A	
September	N/A	11	
October	85	N/A	
November	N/A	N/A	
December	N/A	N/A	



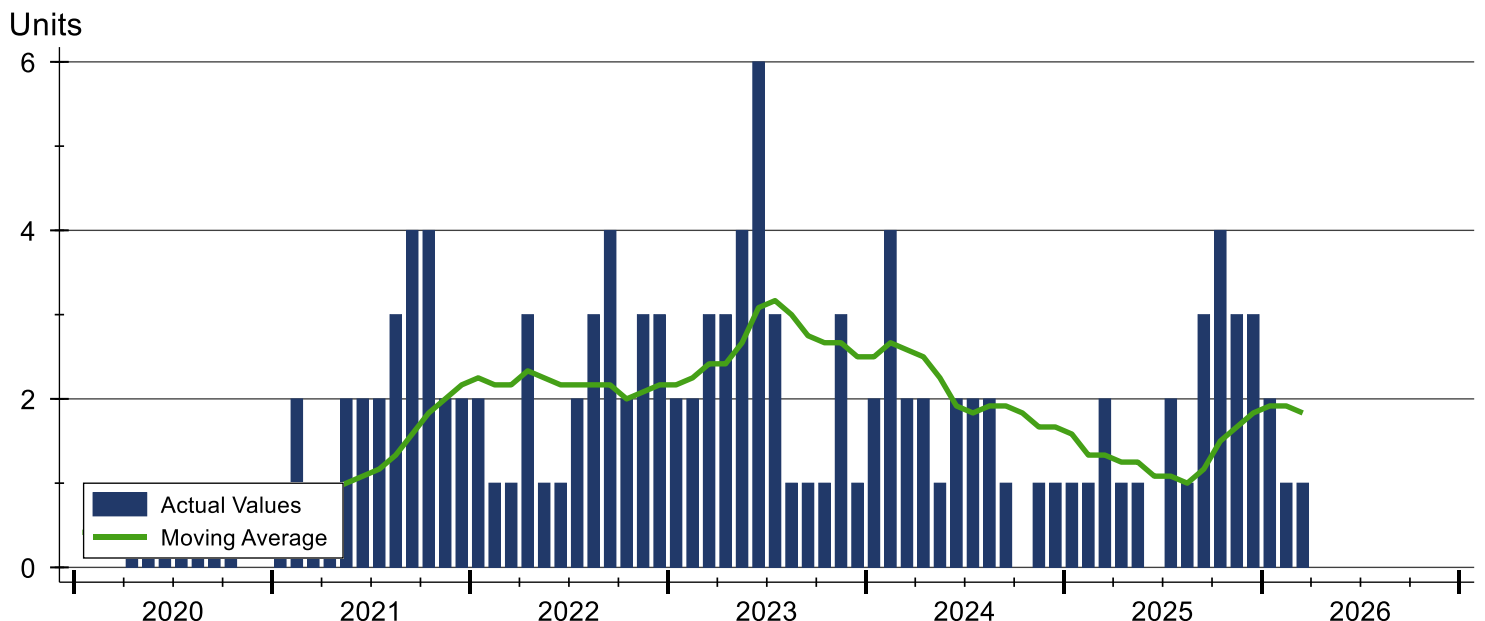
# Marshall County Active Listings Analysis

Summary Statistics for Active Listings		2026	End of March 2025	Change
Active Listings		1	2	-50.0%
Volume (1,000s)		155	284	-45.4%
Months' Supply		2.4	4.8	-50.0%
Average	List Price	154,900	141,950	9.1%
	Days on Market	39	77	-49.4%
	Percent of Original	100.0%	92.2%	8.5%
Median	List Price	154,900	141,950	9.1%
	Days on Market	39	77	-49.4%
	Percent of Original	100.0%	92.2%	8.5%

A total of 1 homes were available for sale in Marshall County at the end of March. This represents a 2.4 months' supply of active listings.

The median list price of homes on the market at the end of March was \$154,900, up 9.1% from 2025. The typical time on market for active listings was 39 days, down from 76 days a year earlier.

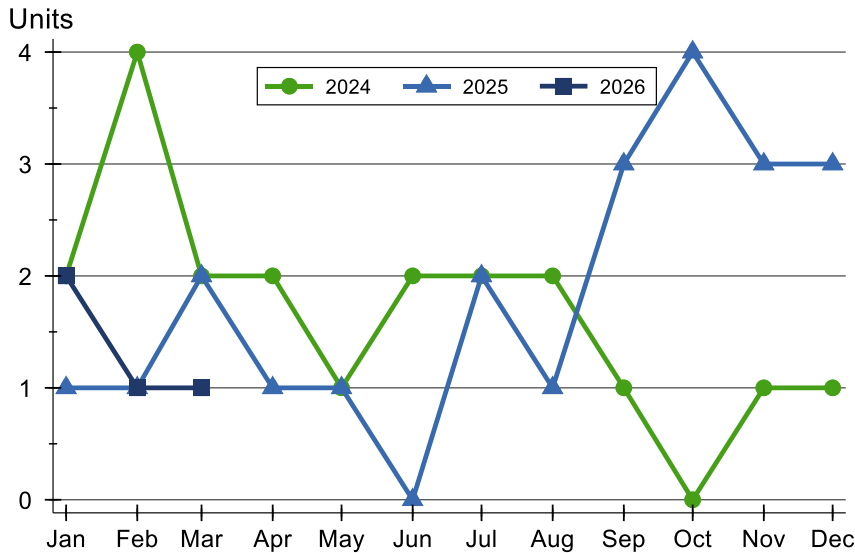
## History of Active Listings





## Marshall County Active Listings Analysis

### Active Listings by Month



Month	2024	2025	2026
January	2	1	<b>2</b>
February	4	1	<b>1</b>
March	2	2	<b>1</b>
April	2	1	
May	1	1	
June	2	0	
July	2	2	
August	2	1	
September	1	3	
October	0	4	
November	1	3	
December	1	3	

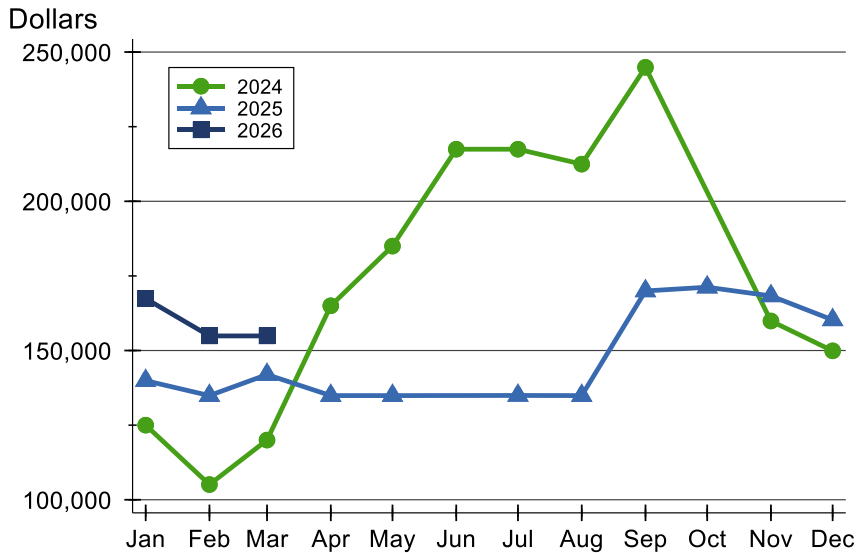
### Active Listings by Price Range

Price Range	Active Listings Number	Active Listings Percent	Months' Supply	List Price Average	List Price Median	Days on Market Avg.	Days on Market Med.	Price as % of Orig. Avg.	Price as % of Orig. Med.
Below \$25,000	0	0.0%	N/A	N/A	N/A	N/A	N/A	N/A	N/A
\$25,000-\$49,999	0	0.0%	N/A	N/A	N/A	N/A	N/A	N/A	N/A
\$50,000-\$99,999	0	0.0%	0.0	N/A	N/A	N/A	N/A	N/A	N/A
\$100,000-\$124,999	0	0.0%	N/A	N/A	N/A	N/A	N/A	N/A	N/A
\$125,000-\$149,999	0	0.0%	N/A	N/A	N/A	N/A	N/A	N/A	N/A
\$150,000-\$174,999	1	100.0%	N/A	154,900	154,900	39	39	100.0%	100.0%
\$175,000-\$199,999	0	0.0%	N/A	N/A	N/A	N/A	N/A	N/A	N/A
\$200,000-\$249,999	0	0.0%	N/A	N/A	N/A	N/A	N/A	N/A	N/A
\$250,000-\$299,999	0	0.0%	N/A	N/A	N/A	N/A	N/A	N/A	N/A
\$300,000-\$399,999	0	0.0%	N/A	N/A	N/A	N/A	N/A	N/A	N/A
\$400,000-\$499,999	0	0.0%	N/A	N/A	N/A	N/A	N/A	N/A	N/A
\$500,000-\$749,999	0	0.0%	N/A	N/A	N/A	N/A	N/A	N/A	N/A
\$750,000-\$999,999	0	0.0%	N/A	N/A	N/A	N/A	N/A	N/A	N/A
\$1,000,000 and up	0	0.0%	N/A	N/A	N/A	N/A	N/A	N/A	N/A



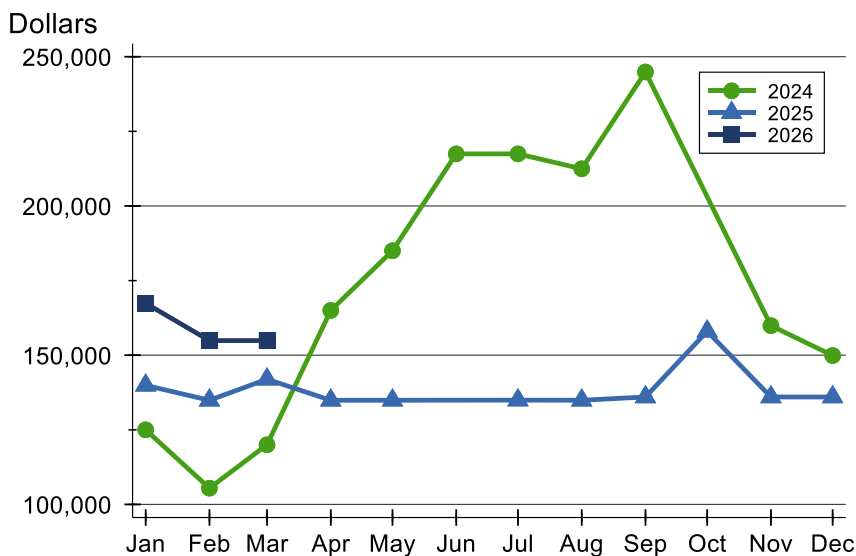
## Marshall County Active Listings Analysis

### Average Price



Month	2024	2025	2026
<b>January</b>	125,000	139,900	<b>167,400</b>
<b>February</b>	105,100	134,900	<b>154,900</b>
<b>March</b>	120,000	141,950	<b>154,900</b>
<b>April</b>	165,000	134,900	
<b>May</b>	185,000	134,900	
<b>June</b>	217,450	N/A	
<b>July</b>	217,450	134,950	
<b>August</b>	212,450	134,900	
<b>September</b>	244,900	169,967	
<b>October</b>	N/A	171,225	
<b>November</b>	159,900	168,300	
<b>December</b>	149,900	160,267	

### Median Price

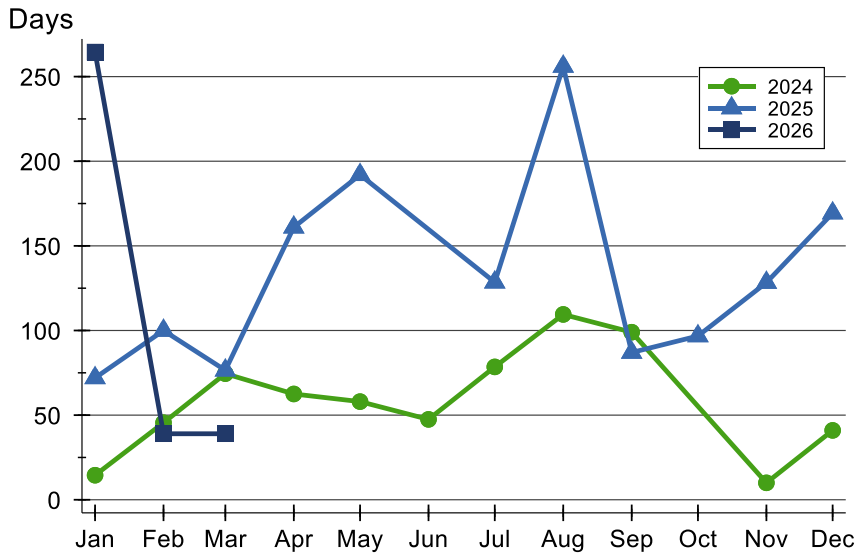


Month	2024	2025	2026
<b>January</b>	125,000	139,900	<b>167,400</b>
<b>February</b>	105,450	134,900	<b>154,900</b>
<b>March</b>	120,000	141,950	<b>154,900</b>
<b>April</b>	165,000	134,900	
<b>May</b>	185,000	134,900	
<b>June</b>	217,450	N/A	
<b>July</b>	217,450	134,950	
<b>August</b>	212,450	134,900	
<b>September</b>	244,900	136,000	
<b>October</b>	N/A	158,000	
<b>November</b>	159,900	136,000	
<b>December</b>	149,900	136,000	



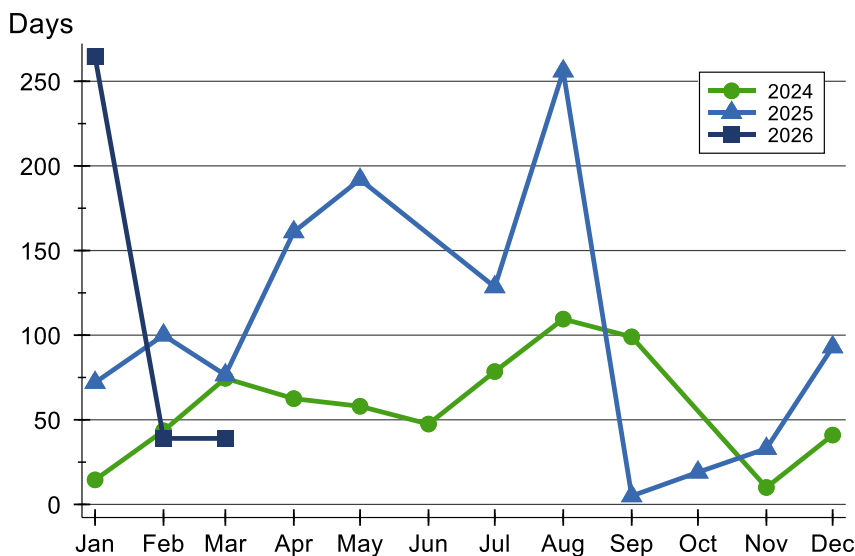
# Marshall County Active Listings Analysis

## Average DOM



Month	2024	2025	2026
January	15	72	265
February	46	100	39
March	75	77	39
April	63	161	
May	58	192	
June	48	N/A	
July	79	129	
August	110	256	
September	99	87	
October	N/A	97	
November	10	128	
December	41	169	

## Median DOM

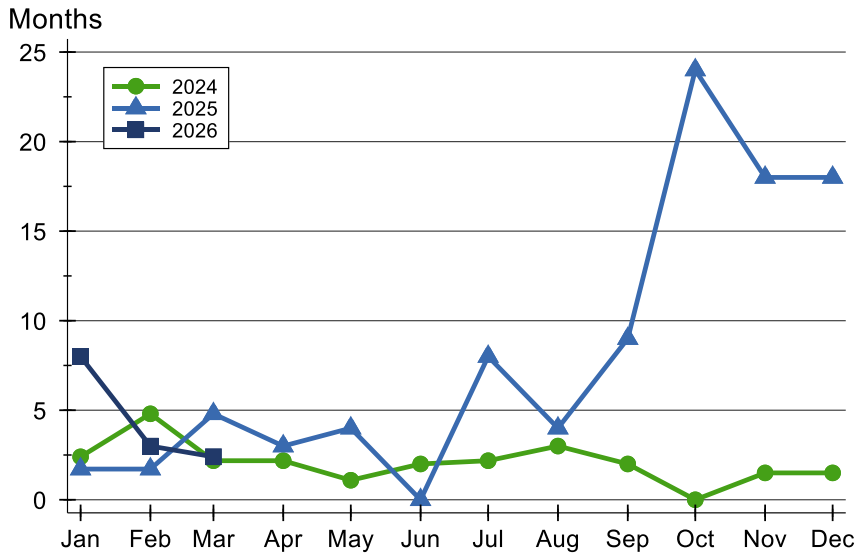


Month	2024	2025	2026
January	15	72	265
February	44	100	39
March	75	77	39
April	63	161	
May	58	192	
June	48	N/A	
July	79	129	
August	110	256	
September	99	5	
October	N/A	19	
November	10	33	
December	41	93	



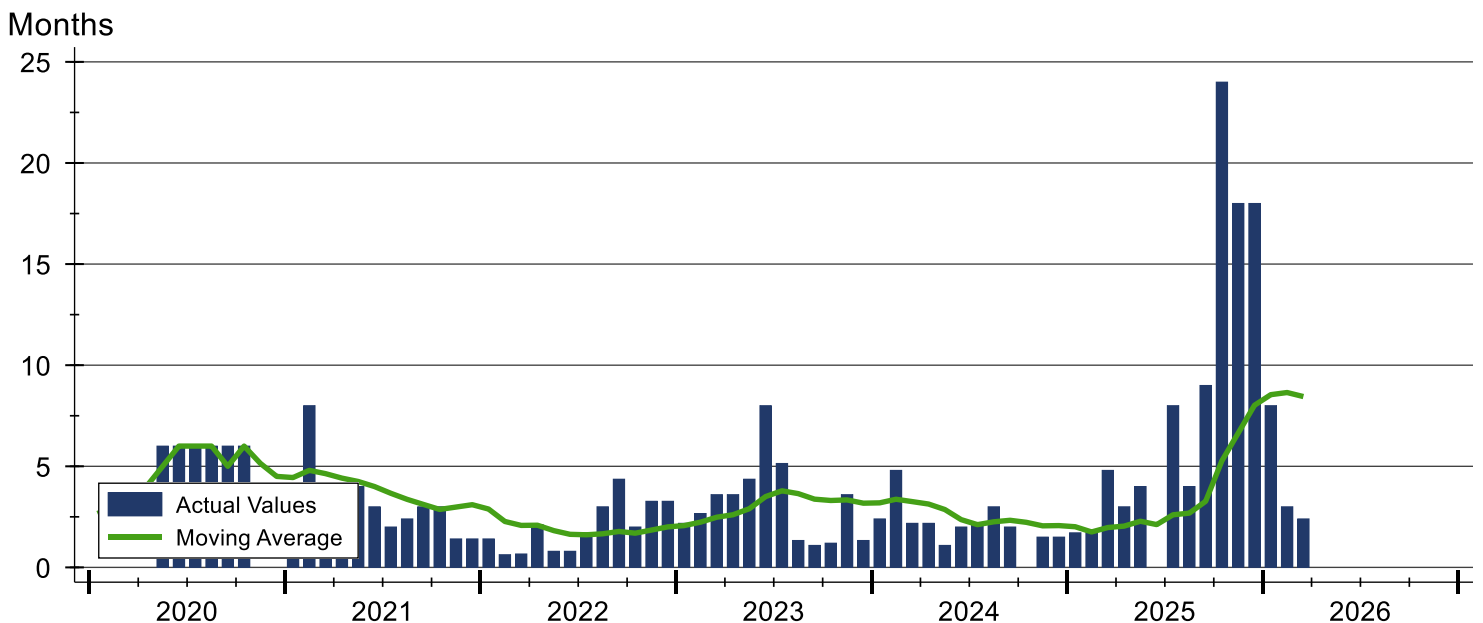
# Marshall County Months' Supply Analysis

## Months' Supply by Month



Month	2024	2025	2026
January	2.4	1.7	8.0
February	4.8	1.7	3.0
March	2.2	4.8	2.4
April	2.2	3.0	
May	1.1	4.0	
June	2.0	0.0	
July	2.2	8.0	
August	3.0	4.0	
September	2.0	9.0	
October	0.0	24.0	
November	1.5	18.0	
December	1.5	18.0	

## History of Month's Supply





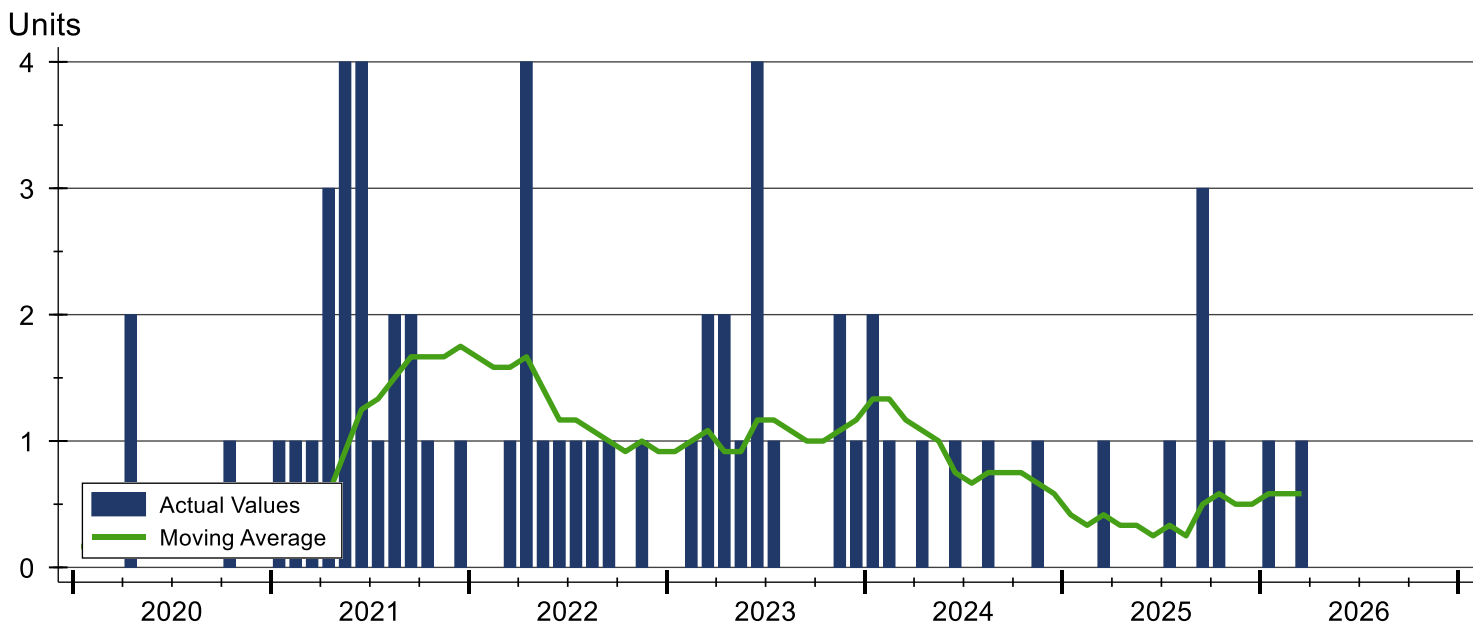
# Marshall County New Listings Analysis

Summary Statistics for New Listings		2026	March 2025	Change
Current Month	New Listings	1	1	0.0%
	Volume (1,000s)	180	149	20.8%
	Average List Price	180,000	149,000	20.8%
	Median List Price	180,000	149,000	20.8%
Year-to-Date	New Listings	2	1	100.0%
	Volume (1,000s)	335	149	124.8%
	Average List Price	167,450	149,000	12.4%
	Median List Price	167,450	149,000	12.4%

A total of 1 new listing was added in Marshall County during March, the same figure as reported in 2025. Year-to-date Marshall County has seen 2 new listings.

The median list price of these homes was \$180,000 up from \$149,000 in 2025.

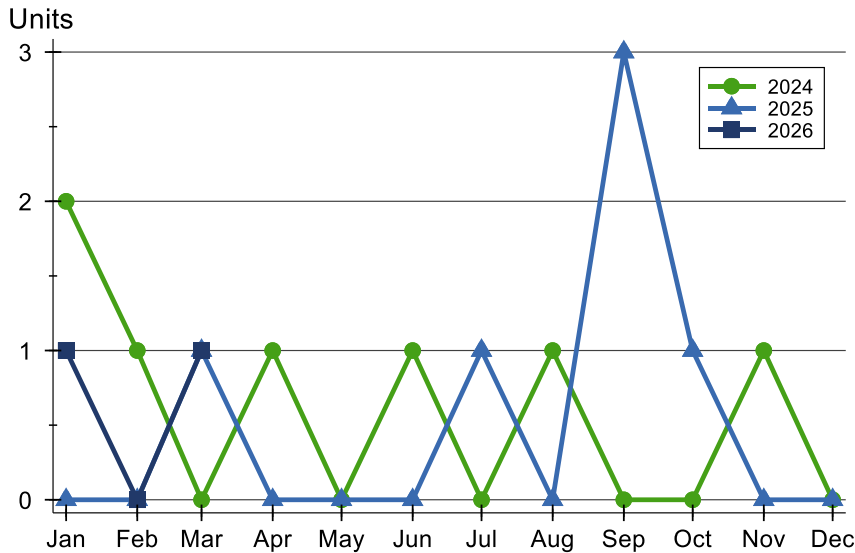
## History of New Listings





## Marshall County New Listings Analysis

### New Listings by Month



Month	2024	2025	2026
January	2	0	1
February	1	0	0
March	0	1	1
April	1	0	0
May	0	0	0
June	1	0	0
July	0	1	0
August	1	0	0
September	0	3	0
October	0	1	0
November	1	0	0
December	0	0	0

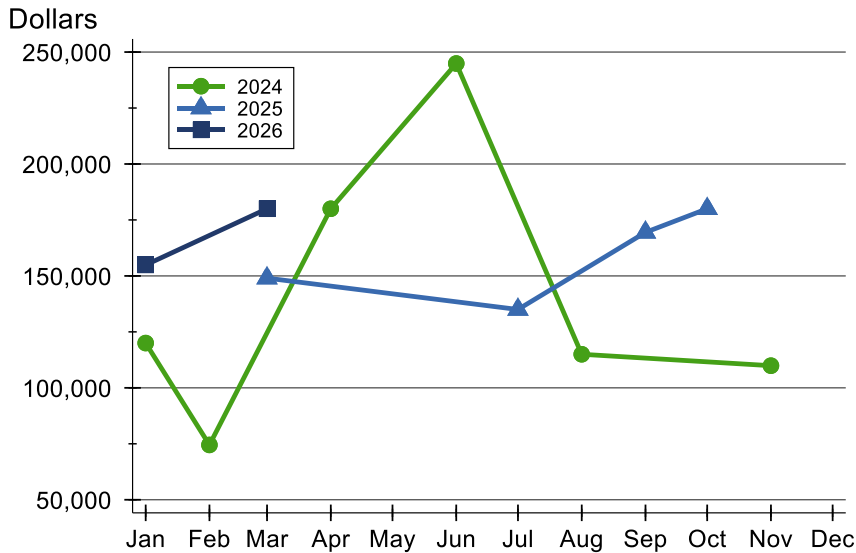
### New Listings by Price Range

Price Range	New Listings		List Price		Days on Market		Price as % of Orig.	
	Number	Percent	Average	Median	Avg.	Med.	Avg.	Med.
Below \$25,000	0	0.0%	N/A	N/A	N/A	N/A	N/A	N/A
\$25,000-\$49,999	0	0.0%	N/A	N/A	N/A	N/A	N/A	N/A
\$50,000-\$99,999	0	0.0%	N/A	N/A	N/A	N/A	N/A	N/A
\$100,000-\$124,999	0	0.0%	N/A	N/A	N/A	N/A	N/A	N/A
\$125,000-\$149,999	0	0.0%	N/A	N/A	N/A	N/A	N/A	N/A
\$150,000-\$174,999	0	0.0%	N/A	N/A	N/A	N/A	N/A	N/A
\$175,000-\$199,999	1	100.0%	180,000	180,000	11	11	100.0%	100.0%
\$200,000-\$249,999	0	0.0%	N/A	N/A	N/A	N/A	N/A	N/A
\$250,000-\$299,999	0	0.0%	N/A	N/A	N/A	N/A	N/A	N/A
\$300,000-\$399,999	0	0.0%	N/A	N/A	N/A	N/A	N/A	N/A
\$400,000-\$499,999	0	0.0%	N/A	N/A	N/A	N/A	N/A	N/A
\$500,000-\$749,999	0	0.0%	N/A	N/A	N/A	N/A	N/A	N/A
\$750,000-\$999,999	0	0.0%	N/A	N/A	N/A	N/A	N/A	N/A
\$1,000,000 and up	0	0.0%	N/A	N/A	N/A	N/A	N/A	N/A



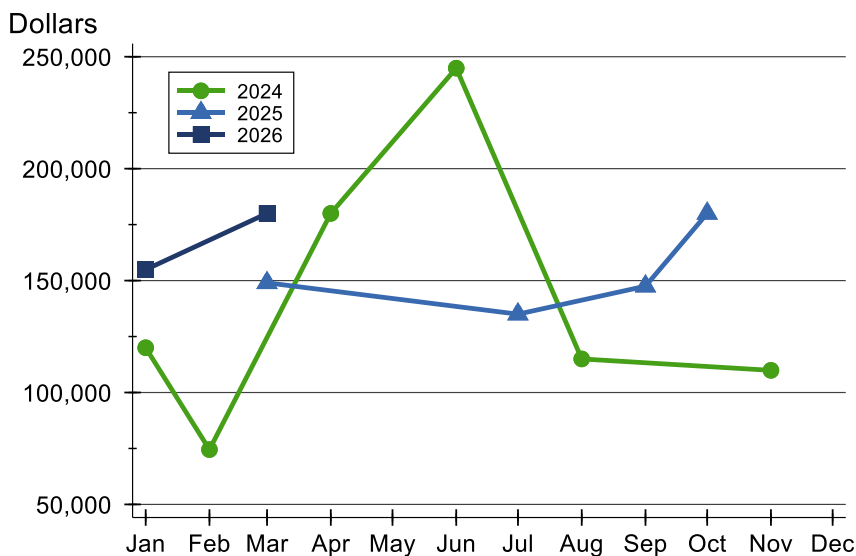
# Marshall County New Listings Analysis

## Average Price



Month	2024	2025	2026
January	120,000	N/A	154,900
February	74,500	N/A	N/A
March	N/A	149,000	180,000
April	180,000	N/A	
May	N/A	N/A	
June	244,900	N/A	
July	N/A	135,000	
August	115,000	N/A	
September	N/A	169,467	
October	N/A	180,000	
November	109,900	N/A	
December	N/A	N/A	

## Median Price



Month	2024	2025	2026
January	120,000	N/A	154,900
February	74,500	N/A	N/A
March	N/A	149,000	180,000
April	180,000	N/A	
May	N/A	N/A	
June	244,900	N/A	
July	N/A	135,000	
August	115,000	N/A	
September	N/A	147,500	
October	N/A	180,000	
November	109,900	N/A	
December	N/A	N/A	



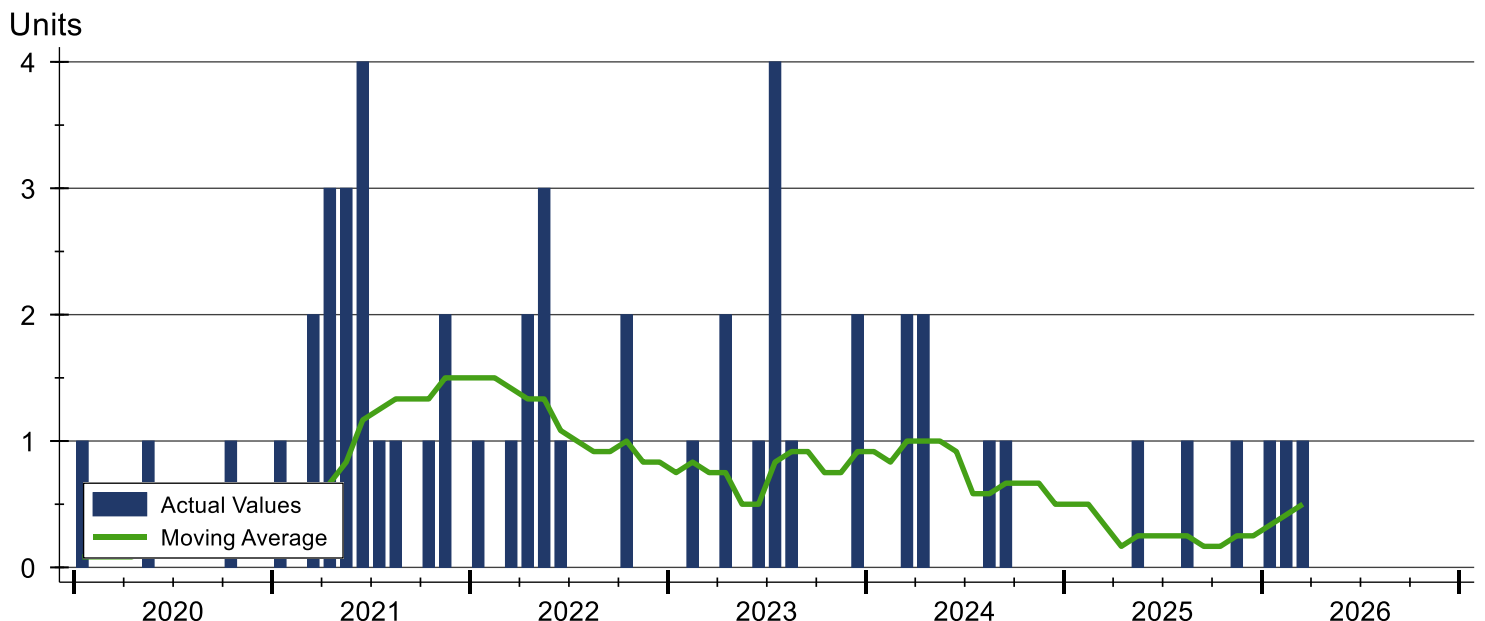
# Marshall County Contracts Written Analysis

Summary Statistics for Contracts Written		2026	March 2025	Change	2026	Year-to-Date 2025	Change
Contracts Written		1	0	N/A	3	0	N/A
Volume (1,000s)		180	0	N/A	426	0	N/A
Average	Sale Price	180,000	N/A	N/A	141,967	N/A	N/A
	Days on Market	11	N/A	N/A	189	N/A	N/A
	Percent of Original	100.0%	N/A	N/A	85.5%	N/A	N/A
Median	Sale Price	180,000	N/A	N/A	136,000	N/A	N/A
	Days on Market	11	N/A	N/A	113	N/A	N/A
	Percent of Original	100.0%	N/A	N/A	95.6%	N/A	N/A

A total of 1 contract for sale was written in Marshall County during the month of March, up from 0 in 2025. The list price of this home was \$180,000.

Half of the homes that went under contract in March were on the market less than 11 days.

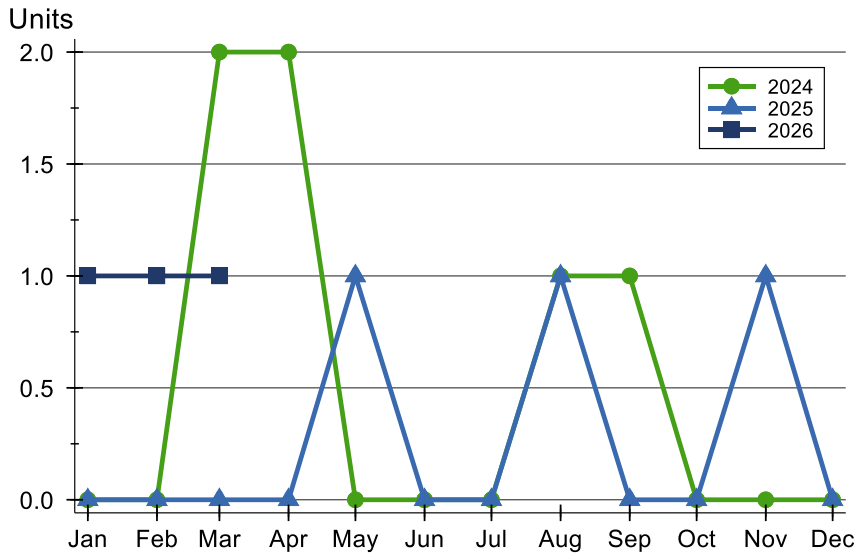
## History of Contracts Written





## Marshall County Contracts Written Analysis

### Contracts Written by Month



Month	2024	2025	2026
<b>January</b>	N/A	N/A	<b>1</b>
<b>February</b>	N/A	N/A	<b>1</b>
<b>March</b>	2	N/A	<b>1</b>
<b>April</b>	2	N/A	
<b>May</b>	N/A	1	
<b>June</b>	N/A	N/A	
<b>July</b>	N/A	N/A	
<b>August</b>	1	1	
<b>September</b>	1	N/A	
<b>October</b>	N/A	N/A	
<b>November</b>	N/A	1	
<b>December</b>	N/A	N/A	

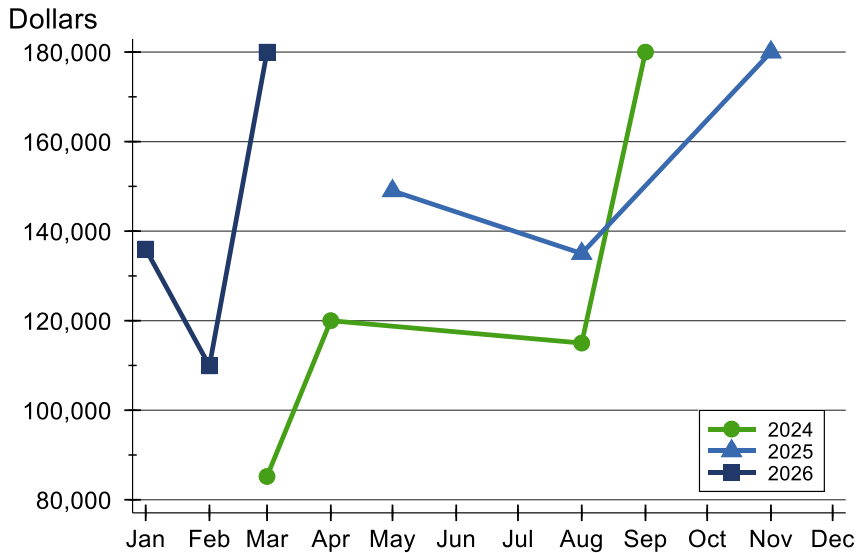
### Contracts Written by Price Range

Price Range	Contracts Written		List Price		Days on Market		Price as % of Orig.	
	Number	Percent	Average	Median	Avg.	Med.	Avg.	Med.
Below \$25,000	0	0.0%	N/A	N/A	N/A	N/A	N/A	N/A
\$25,000-\$49,999	0	0.0%	N/A	N/A	N/A	N/A	N/A	N/A
\$50,000-\$99,999	0	0.0%	N/A	N/A	N/A	N/A	N/A	N/A
\$100,000-\$124,999	0	0.0%	N/A	N/A	N/A	N/A	N/A	N/A
\$125,000-\$149,999	0	0.0%	N/A	N/A	N/A	N/A	N/A	N/A
\$150,000-\$174,999	0	0.0%	N/A	N/A	N/A	N/A	N/A	N/A
\$175,000-\$199,999	1	100.0%	180,000	180,000	11	11	100.0%	100.0%
\$200,000-\$249,999	0	0.0%	N/A	N/A	N/A	N/A	N/A	N/A
\$250,000-\$299,999	0	0.0%	N/A	N/A	N/A	N/A	N/A	N/A
\$300,000-\$399,999	0	0.0%	N/A	N/A	N/A	N/A	N/A	N/A
\$400,000-\$499,999	0	0.0%	N/A	N/A	N/A	N/A	N/A	N/A
\$500,000-\$749,999	0	0.0%	N/A	N/A	N/A	N/A	N/A	N/A
\$750,000-\$999,999	0	0.0%	N/A	N/A	N/A	N/A	N/A	N/A
\$1,000,000 and up	0	0.0%	N/A	N/A	N/A	N/A	N/A	N/A



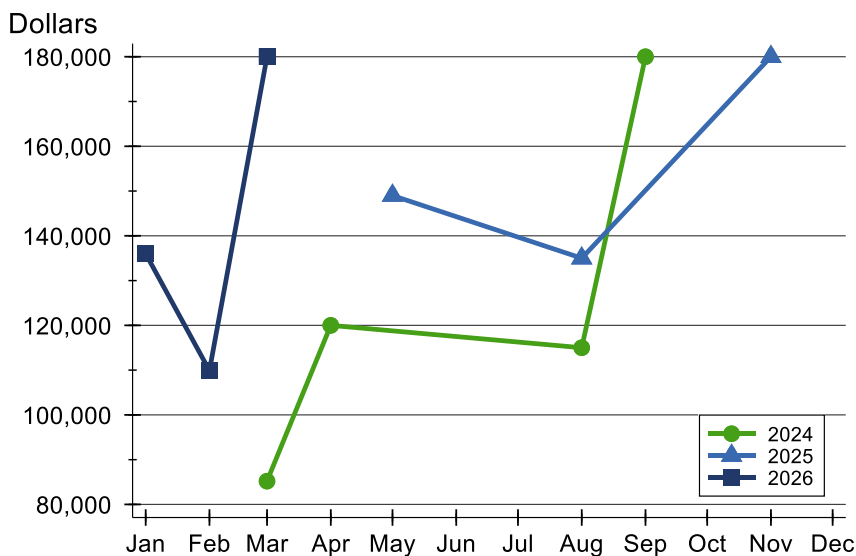
## Marshall County Contracts Written Analysis

### Average Price



Month	2024	2025	2026
January	N/A	N/A	<b>136,000</b>
February	N/A	N/A	<b>109,900</b>
March	85,200	N/A	<b>180,000</b>
April	120,000	N/A	
May	N/A	149,000	
June	N/A	N/A	
July	N/A	N/A	
August	115,000	135,000	
September	180,000	N/A	
October	N/A	N/A	
November	N/A	180,000	
December	N/A	N/A	

### Median Price

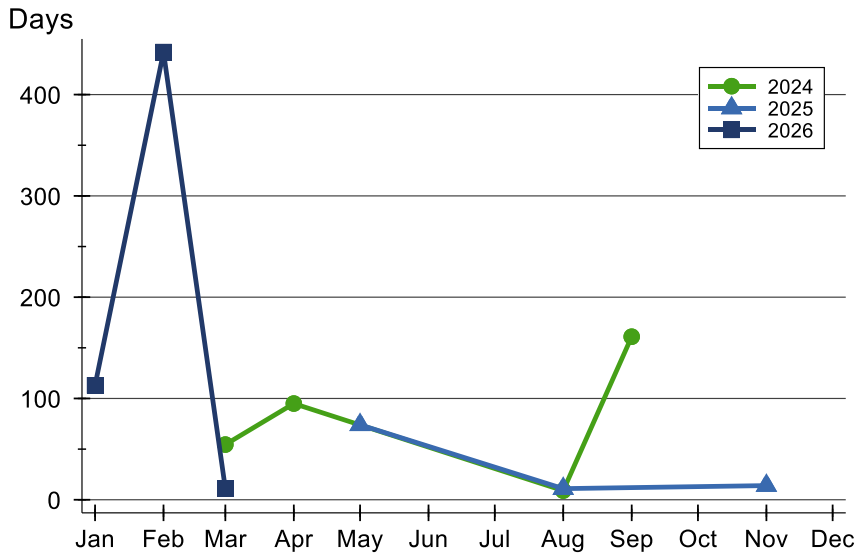


Month	2024	2025	2026
January	N/A	N/A	<b>136,000</b>
February	N/A	N/A	<b>109,900</b>
March	85,200	N/A	<b>180,000</b>
April	120,000	N/A	
May	N/A	149,000	
June	N/A	N/A	
July	N/A	N/A	
August	115,000	135,000	
September	180,000	N/A	
October	N/A	N/A	
November	N/A	180,000	
December	N/A	N/A	



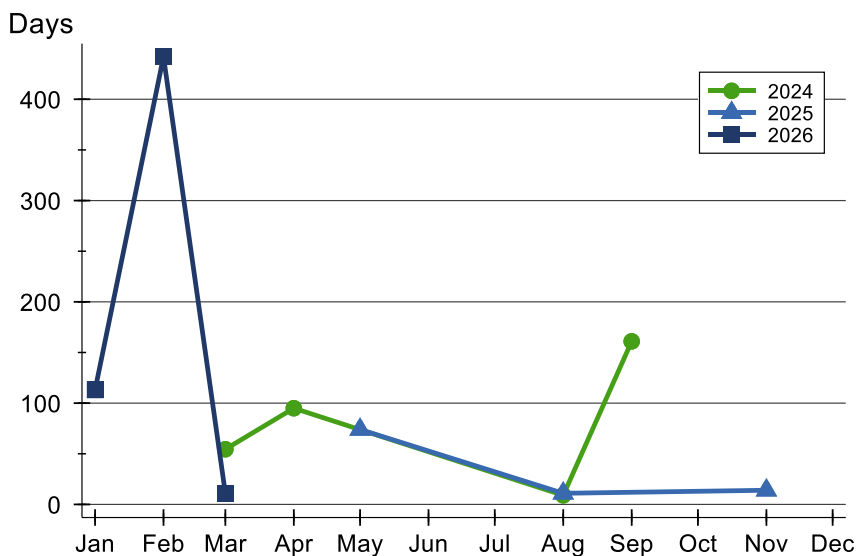
# Marshall County Contracts Written Analysis

## Average DOM



Month	2024	2025	2026
January	N/A	N/A	113
February	N/A	N/A	442
March	55	N/A	11
April	95	N/A	
May	N/A	74	
June	N/A	N/A	
July	N/A	N/A	
August	9	11	
September	161	N/A	
October	N/A	N/A	
November	N/A	14	
December	N/A	N/A	

## Median DOM



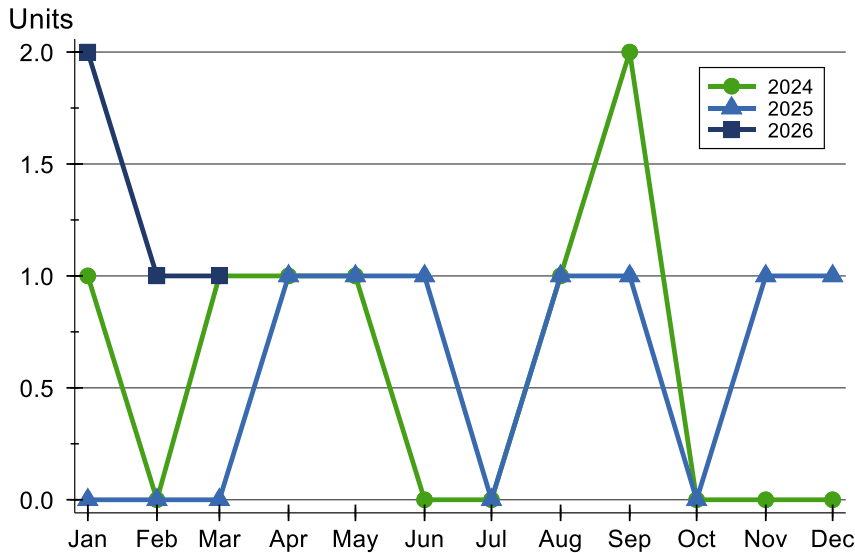
Month	2024	2025	2026
January	N/A	N/A	113
February	N/A	N/A	442
March	55	N/A	11
April	95	N/A	
May	N/A	74	
June	N/A	N/A	
July	N/A	N/A	
August	9	11	
September	161	N/A	
October	N/A	N/A	
November	N/A	14	
December	N/A	N/A	





## Marshall County Pending Contracts Analysis

### Pending Contracts by Month



Month	2024	2025	2026
January	1	0	2
February	0	0	1
March	1	0	1
April	1	1	0
May	1	1	0
June	0	1	0
July	0	0	0
August	1	1	0
September	2	1	0
October	0	0	0
November	0	1	0
December	0	1	0

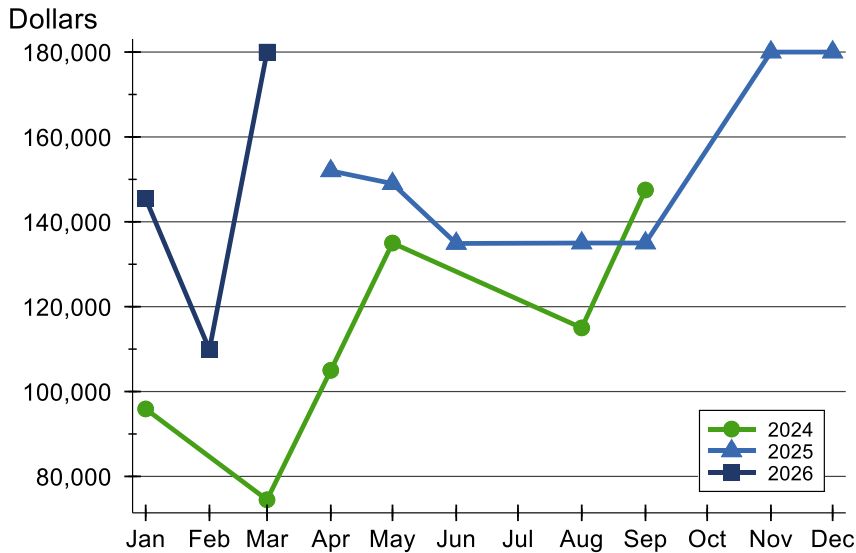
### Pending Contracts by Price Range

Price Range	Pending Contracts		List Price		Days on Market		Price as % of Orig.	
	Number	Percent	Average	Median	Avg.	Med.	Avg.	Med.
Below \$25,000	0	0.0%	N/A	N/A	N/A	N/A	N/A	N/A
\$25,000-\$49,999	0	0.0%	N/A	N/A	N/A	N/A	N/A	N/A
\$50,000-\$99,999	0	0.0%	N/A	N/A	N/A	N/A	N/A	N/A
\$100,000-\$124,999	0	0.0%	N/A	N/A	N/A	N/A	N/A	N/A
\$125,000-\$149,999	0	0.0%	N/A	N/A	N/A	N/A	N/A	N/A
\$150,000-\$174,999	0	0.0%	N/A	N/A	N/A	N/A	N/A	N/A
\$175,000-\$199,999	1	100.0%	180,000	180,000	11	11	100.0%	100.0%
\$200,000-\$249,999	0	0.0%	N/A	N/A	N/A	N/A	N/A	N/A
\$250,000-\$299,999	0	0.0%	N/A	N/A	N/A	N/A	N/A	N/A
\$300,000-\$399,999	0	0.0%	N/A	N/A	N/A	N/A	N/A	N/A
\$400,000-\$499,999	0	0.0%	N/A	N/A	N/A	N/A	N/A	N/A
\$500,000-\$749,999	0	0.0%	N/A	N/A	N/A	N/A	N/A	N/A
\$750,000-\$999,999	0	0.0%	N/A	N/A	N/A	N/A	N/A	N/A
\$1,000,000 and up	0	0.0%	N/A	N/A	N/A	N/A	N/A	N/A



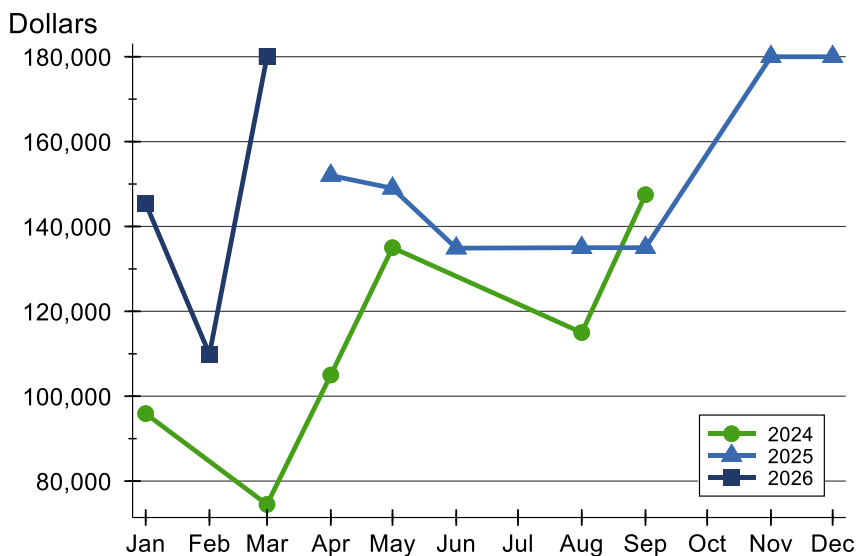
## Marshall County Pending Contracts Analysis

### Average Price



Month	2024	2025	2026
<b>January</b>	95,900	N/A	<b>145,450</b>
<b>February</b>	N/A	N/A	<b>109,900</b>
<b>March</b>	74,500	N/A	<b>180,000</b>
<b>April</b>	105,000	152,000	
<b>May</b>	135,000	149,000	
<b>June</b>	N/A	134,900	
<b>July</b>	N/A	N/A	
<b>August</b>	115,000	135,000	
<b>September</b>	147,500	135,000	
<b>October</b>	N/A	N/A	
<b>November</b>	N/A	180,000	
<b>December</b>	N/A	180,000	

### Median Price

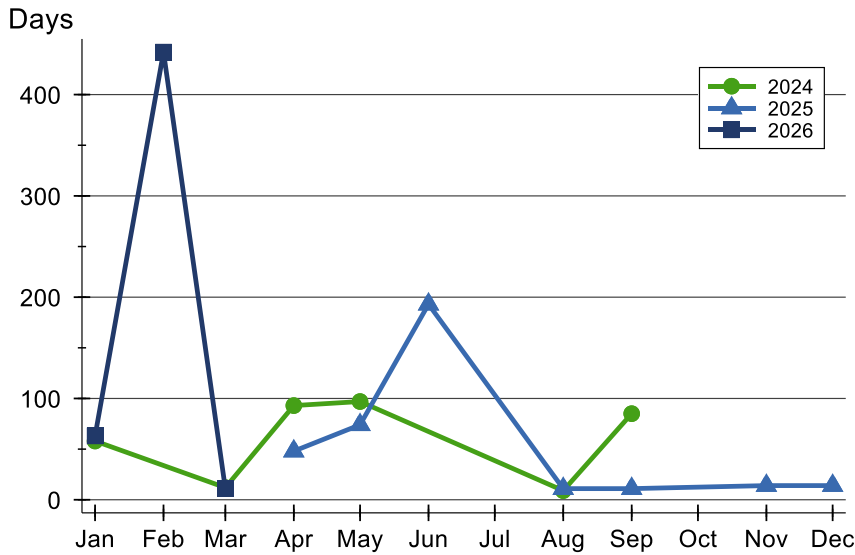


Month	2024	2025	2026
<b>January</b>	95,900	N/A	<b>145,450</b>
<b>February</b>	N/A	N/A	<b>109,900</b>
<b>March</b>	74,500	N/A	<b>180,000</b>
<b>April</b>	105,000	152,000	
<b>May</b>	135,000	149,000	
<b>June</b>	N/A	134,900	
<b>July</b>	N/A	N/A	
<b>August</b>	115,000	135,000	
<b>September</b>	147,500	135,000	
<b>October</b>	N/A	N/A	
<b>November</b>	N/A	180,000	
<b>December</b>	N/A	180,000	



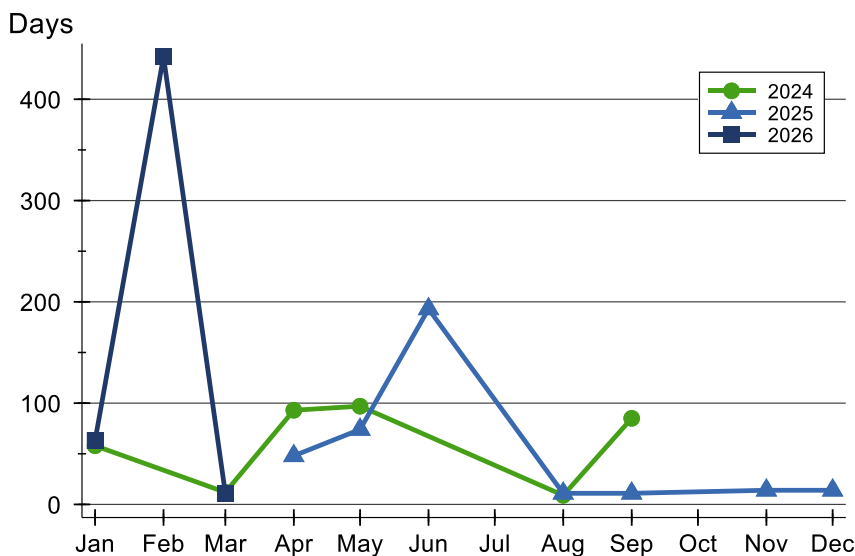
# Marshall County Pending Contracts Analysis

## Average DOM



Month	2024	2025	2026
January	58	N/A	63
February	N/A	N/A	442
March	12	N/A	11
April	93	48	
May	97	74	
June	N/A	193	
July	N/A	N/A	
August	9	11	
September	85	11	
October	N/A	N/A	
November	N/A	14	
December	N/A	14	

## Median DOM



Month	2024	2025	2026
January	58	N/A	63
February	N/A	N/A	442
March	12	N/A	11
April	93	48	
May	97	74	
June	N/A	193	
July	N/A	N/A	
August	9	11	
September	85	11	
October	N/A	N/A	
November	N/A	14	
December	N/A	14	