



**October
2021**

Flint Hills MLS Statistics



**FLINT HILLS
ASSOCIATION
OF REALTORS®**

Pottawatomie County Housing Report



Market Overview

Pottawatomie County Home Sales Fell in October

Total home sales in Pottawatomie County fell last month to 28 units, compared to 35 units in October 2020. Total sales volume was \$8.6 million, up from a year earlier.

The median sale price in October was \$293,000, up from \$257,000 a year earlier. Homes that sold in October were typically on the market for 14 days and sold for 100.0% of their list prices.

Pottawatomie County Active Listings Up at End of October

The total number of active listings in Pottawatomie County at the end of October was 45 units, up from 42 at the same point in 2020. This represents a 1.4 months' supply of homes available for sale. The median list price of homes on the market at the end of October was \$299,900.

During October, a total of 34 contracts were written up from 33 in October 2020. At the end of the month, there were 63 contracts still pending.

Report Contents

- Summary Statistics – Page 2
- Closed Listing Analysis – Page 3
- Active Listings Analysis – Page 7
- Months' Supply Analysis – Page 11
- New Listings Analysis – Page 12
- Contracts Written Analysis – Page 15
- Pending Contracts Analysis – Page 19

Contact Information

Margaret Pendleton, Association Executive
 Flint Hills Association of REALTORS®
 205 S. Seth Child Road
 Manhattan, KS 66502
 685-776-1211
ae@flinthillsrealtors.net
www.flinthillsrealtors.net



**October
2021**

Flint Hills MLS Statistics



**FLINT HILLS
ASSOCIATION
OF REALTORS®**

Pottawatomie County Summary Statistics

October MLS Statistics Three-year History		Current Month			Year-to-Date		
		2021	2020	2019	2021	2020	2019
Home Sales		28	35	23	332	314	282
Change from prior year		-20.0%	52.2%	-34.3%	5.7%	11.3%	-0.4%
Active Listings		45	42	85	N/A	N/A	N/A
Change from prior year		7.1%	-50.6%	-16.7%			
Months' Supply		1.4	1.4	3.2	N/A	N/A	N/A
Change from prior year		0.0%	-56.3%	-15.8%			
New Listings		31	31	30	383	370	373
Change from prior year		0.0%	3.3%	-14.3%	3.5%	-0.8%	-8.8%
Contracts Written		34	33	22	354	340	291
Change from prior year		3.0%	50.0%	-15.4%	4.1%	16.8%	-0.7%
Pending Contracts		63	51	38	N/A	N/A	N/A
Change from prior year		23.5%	34.2%	18.8%			
Sales Volume (1,000s)		8,618	8,282	5,148	90,858	78,635	66,775
Change from prior year		4.1%	60.9%	-29.9%	15.5%	17.8%	1.6%
Average	Sale Price	307,798	236,625	223,845	273,668	250,430	236,792
	Change from prior year	30.1%	5.7%	6.8%	9.3%	5.8%	2.0%
	List Price of Actives	291,840	271,369	265,558	N/A	N/A	N/A
	Change from prior year	7.5%	2.2%	10.7%			
	Days on Market	35	46	46	32	49	64
Change from prior year	-23.9%	0.0%	-37.8%	-34.7%	-23.4%	-7.2%	
Percent of List	102.8%	100.2%	97.2%	100.1%	99.0%	98.5%	
Change from prior year	2.6%	3.1%	0.1%	1.1%	0.5%	0.0%	
Percent of Original	102.0%	99.1%	95.3%	99.4%	97.6%	96.8%	
Change from prior year	2.9%	4.0%	1.4%	1.8%	0.8%	0.4%	
Median	Sale Price	293,000	257,000	207,000	272,500	248,000	230,000
	Change from prior year	14.0%	24.2%	-1.4%	9.9%	7.8%	0.9%
	List Price of Actives	299,900	282,450	249,900	N/A	N/A	N/A
	Change from prior year	6.2%	13.0%	6.4%			
	Days on Market	14	22	46	9	23	43
Change from prior year	-36.4%	-52.2%	0.0%	-60.9%	-46.5%	0.0%	
Percent of List	100.0%	99.5%	97.4%	100.0%	99.6%	98.8%	
Change from prior year	0.5%	2.2%	-0.4%	0.4%	0.8%	-0.5%	
Percent of Original	99.8%	98.9%	95.9%	100.0%	98.9%	97.8%	
Change from prior year	0.9%	3.1%	-1.4%	1.1%	1.1%	0.0%	

Note: Year-to-date statistics cannot be calculated for Active Listings, Months' Supply and Pending Contracts.



Pottawatomie County Closed Listings Analysis

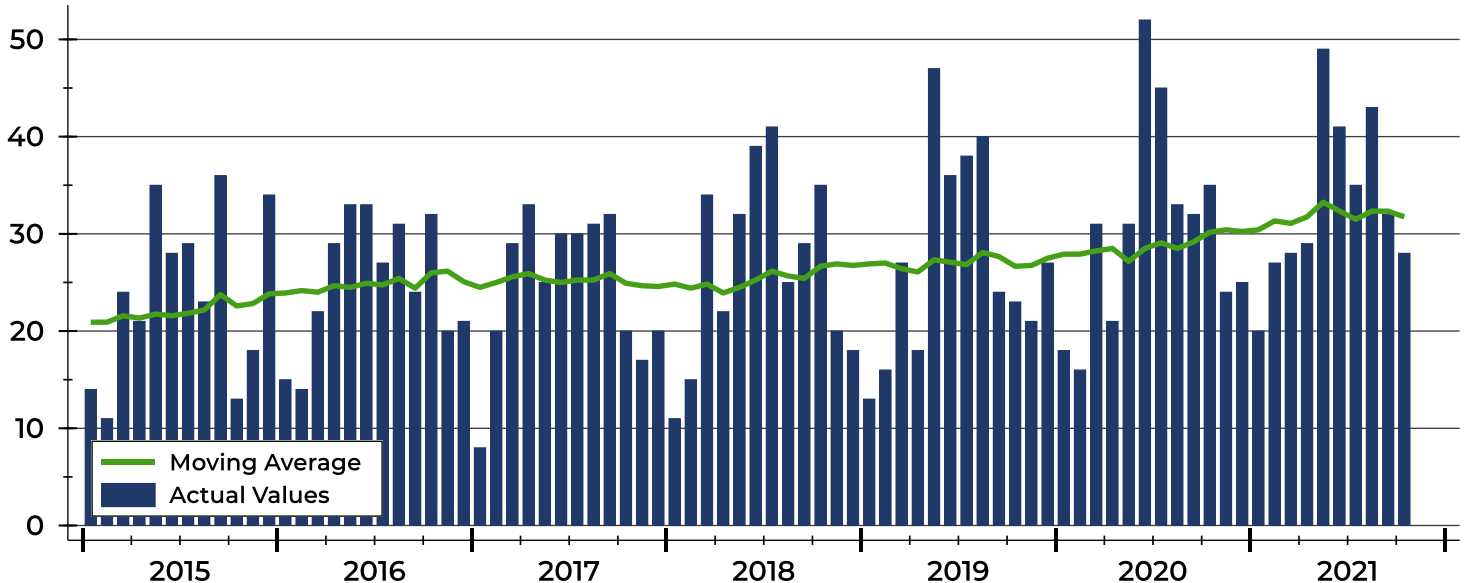
Summary Statistics for Closed Listings		2021	October 2020	Change	2021	Year-to-Date 2020	Change
Closed Listings		28	35	-20.0%	332	314	5.7%
Volume (1,000s)		8,618	8,282	4.1%	90,858	78,635	15.5%
Months' Supply		1.4	1.4	0.0%	N/A	N/A	N/A
Average	Sale Price	307,798	236,625	30.1%	273,668	250,430	9.3%
	Days on Market	35	46	-23.9%	32	49	-34.7%
	Percent of List	102.8%	100.2%	2.6%	100.1%	99.0%	1.1%
	Percent of Original	102.0%	99.1%	2.9%	99.4%	97.6%	1.8%
Median	Sale Price	293,000	257,000	14.0%	272,500	248,000	9.9%
	Days on Market	14	22	-36.4%	9	23	-60.9%
	Percent of List	100.0%	99.5%	0.5%	100.0%	99.6%	0.4%
	Percent of Original	99.8%	98.9%	0.9%	100.0%	98.9%	1.1%

A total of 28 homes sold in Pottawatomie County in October, down from 35 units in October 2020. Total sales volume rose to \$8.6 million compared to \$8.3 million in the previous year.

The median sales price in October was \$293,000, up 14.0% compared to the prior year. Median days on market was 14 days, up from 11 days in September, but down from 22 in October 2020.

History of Closed Listings

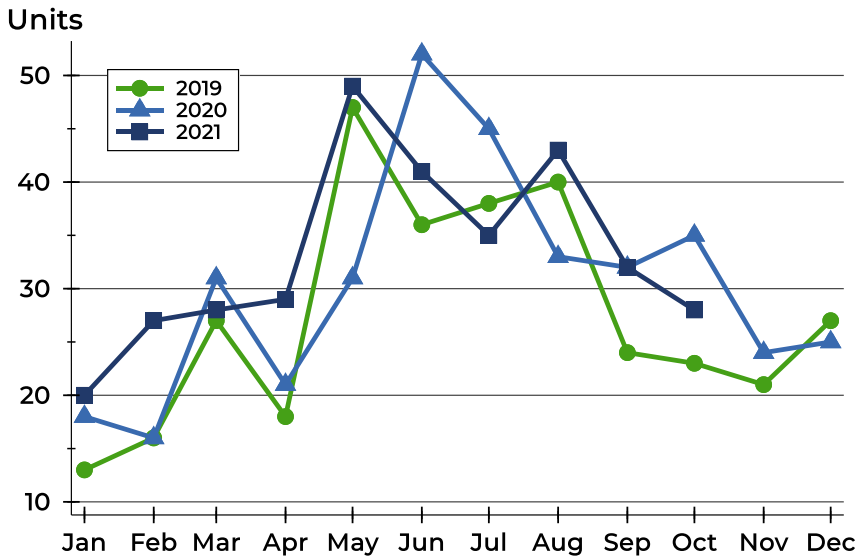
Units





Pottawatomie County Closed Listings Analysis

Closed Listings by Month



Month	2019	2020	2021
January	13	18	20
February	16	16	27
March	27	31	28
April	18	21	29
May	47	31	49
June	36	52	41
July	38	45	35
August	40	33	43
September	24	32	32
October	23	35	28
November	21	24	
December	27	25	

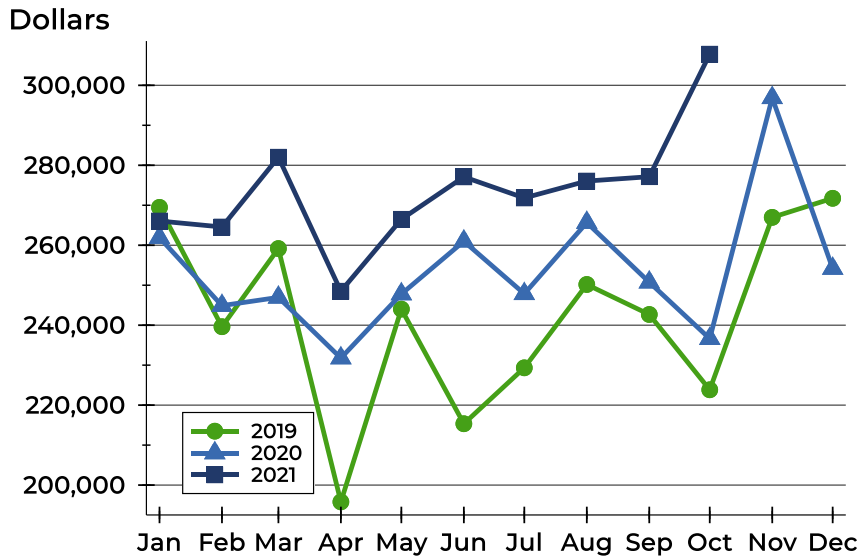
Closed Listings by Price Range

Price Range	Sales		Months' Supply	Sale Price		Days on Market		Price as % of List		Price as % of Orig.	
	Number	Percent		Average	Median	Avg.	Med.	Avg.	Med.	Avg.	Med.
Below \$25,000	1	3.6%	0.0	20,000	20,000	1	1	200.0%	200.0%	200.0%	200.0%
\$25,000-\$49,999	0	0.0%	N/A	N/A	N/A	N/A	N/A	N/A	N/A	N/A	N/A
\$50,000-\$99,999	1	3.6%	0.0	70,000	70,000	102	102	82.4%	82.4%	77.8%	77.8%
\$100,000-\$124,999	2	7.1%	1.3	112,500	112,500	29	29	100.0%	100.0%	100.0%	100.0%
\$125,000-\$149,999	1	3.6%	1.8	145,000	145,000	0	0	100.0%	100.0%	100.0%	100.0%
\$150,000-\$174,999	1	3.6%	2.0	154,500	154,500	47	47	100.0%	100.0%	99.7%	99.7%
\$175,000-\$199,999	2	7.1%	1.1	188,750	188,750	4	4	100.9%	100.9%	99.6%	99.6%
\$200,000-\$249,999	1	3.6%	1.5	240,000	240,000	64	64	96.0%	96.0%	96.0%	96.0%
\$250,000-\$299,999	7	25.0%	0.7	282,179	285,000	39	6	99.5%	100.0%	99.5%	100.0%
\$300,000-\$399,999	3	10.7%	2.0	341,367	329,600	10	9	98.1%	98.4%	98.1%	98.4%
\$400,000-\$499,999	5	17.9%	1.4	422,400	424,000	23	12	103.1%	100.0%	102.7%	100.0%
\$500,000-\$749,999	4	14.3%	1.5	568,750	567,500	70	64	97.8%	97.8%	94.7%	95.6%
\$750,000-\$999,999	0	0.0%	N/A	N/A	N/A	N/A	N/A	N/A	N/A	N/A	N/A
\$1,000,000 and up	0	0.0%	N/A	N/A	N/A	N/A	N/A	N/A	N/A	N/A	N/A



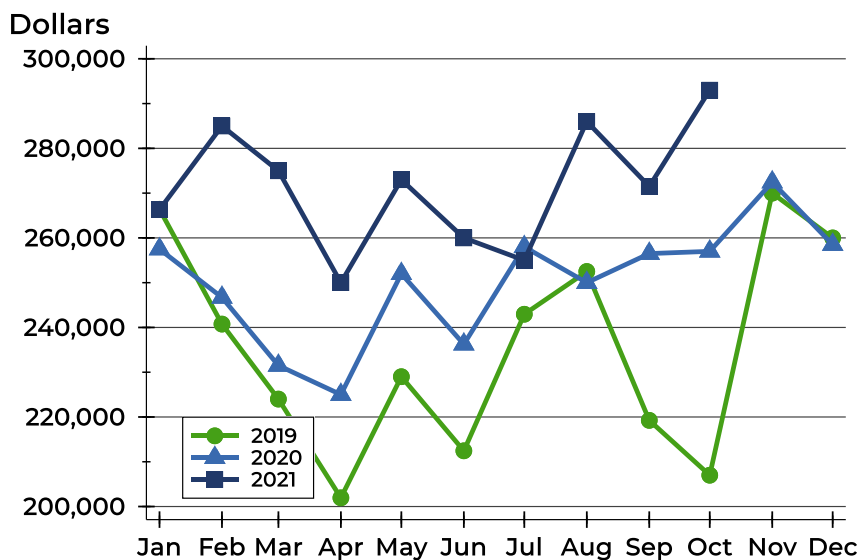
Pottawatomie County Closed Listings Analysis

Average Price



Month	2019	2020	2021
January	269,469	261,903	266,064
February	239,622	244,894	264,562
March	259,167	246,959	282,018
April	195,802	231,776	248,504
May	244,023	247,790	266,490
June	215,347	260,992	277,099
July	229,337	247,853	271,821
August	250,183	265,671	276,057
September	242,679	250,749	277,140
October	223,845	236,625	307,798
November	266,971	296,878	
December	271,739	254,176	

Median Price

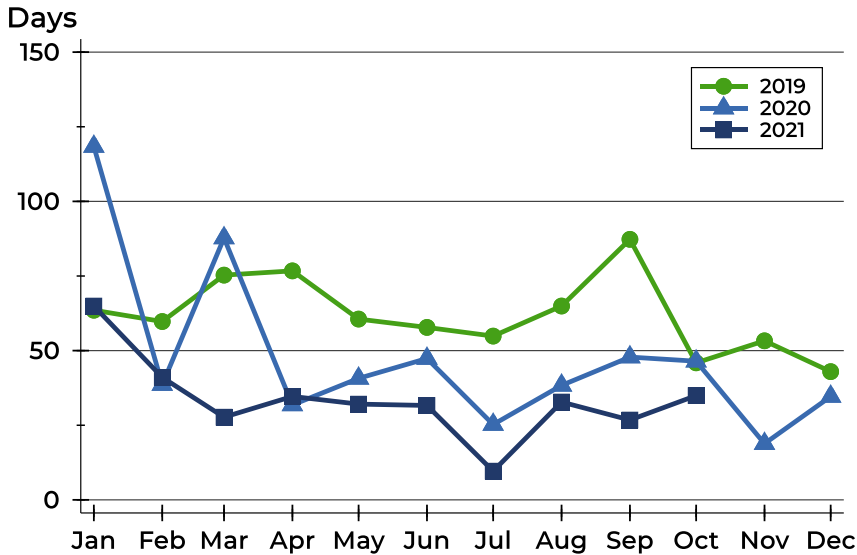


Month	2019	2020	2021
January	266,403	257,500	266,314
February	240,750	246,700	285,000
March	224,000	231,500	275,000
April	201,950	225,000	250,000
May	229,000	252,000	273,000
June	212,450	236,250	260,000
July	242,950	258,000	255,000
August	252,500	250,000	286,000
September	219,250	256,500	271,500
October	207,000	257,000	293,000
November	270,000	272,450	
December	260,000	258,500	



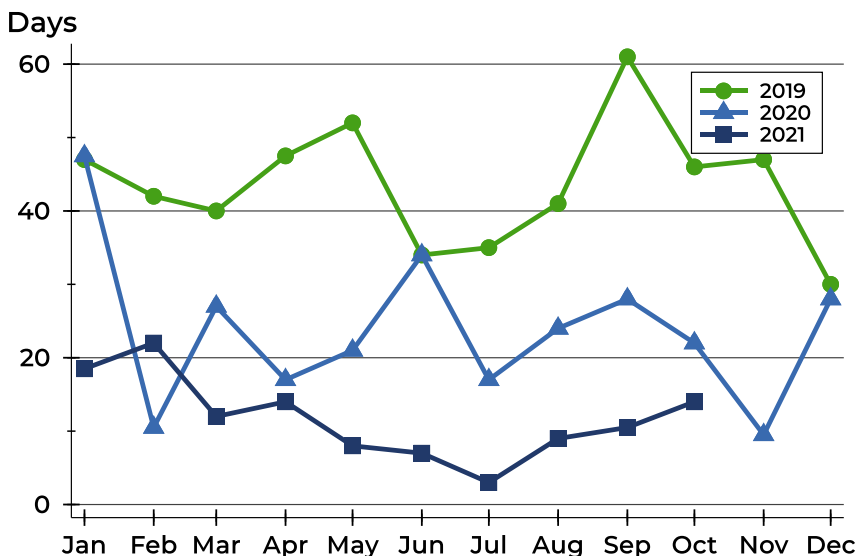
Pottawatomie County Closed Listings Analysis

Average DOM



Month	2019	2020	2021
January	64	118	65
February	60	39	41
March	75	88	28
April	77	32	35
May	61	41	32
June	58	47	32
July	55	25	10
August	65	38	33
September	87	48	27
October	46	46	35
November	53	19	
December	43	35	

Median DOM



Month	2019	2020	2021
January	47	48	19
February	42	11	22
March	40	27	12
April	48	17	14
May	52	21	8
June	34	34	7
July	35	17	3
August	41	24	9
September	61	28	11
October	46	22	14
November	47	10	
December	30	28	



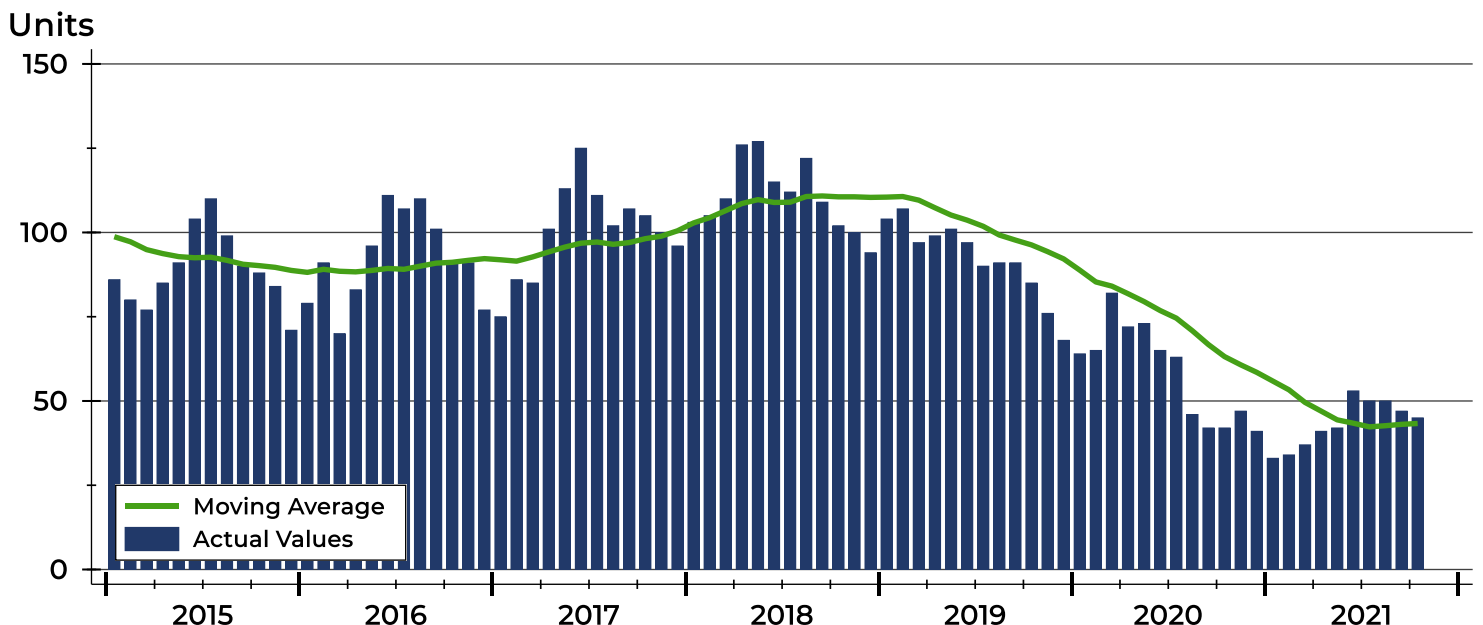
Pottawatomie County Active Listings Analysis

Summary Statistics for Active Listings		2021	End of October 2020	Change
Active Listings		45	42	7.1%
Volume (1,000s)		13,133	11,398	15.2%
Months' Supply		1.4	1.4	0.0%
Average	List Price	291,840	271,369	7.5%
	Days on Market	70	78	-10.3%
	Percent of Original	98.3%	97.7%	0.6%
Median	List Price	299,900	282,450	6.2%
	Days on Market	45	46	-2.2%
	Percent of Original	100.0%	100.0%	0.0%

A total of 45 homes were available for sale in Pottawatomie County at the end of October. This represents a 1.4 months' supply of active listings.

The median list price of homes on the market at the end of October was \$299,900, up 6.2% from 2020. The typical time on market for active listings was 45 days, down from 46 days a year earlier.

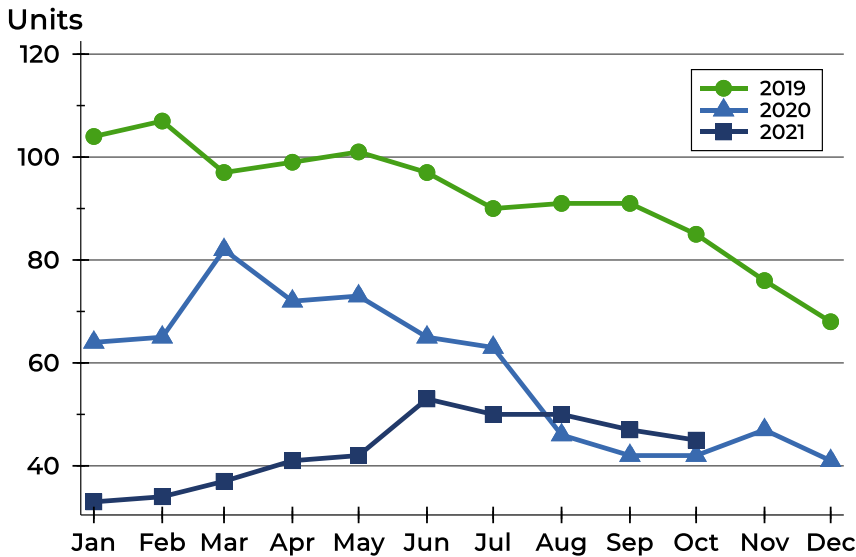
History of Active Listings





Pottawatomie County Active Listings Analysis

Active Listings by Month



Month	2019	2020	2021
January	104	64	33
February	107	65	34
March	97	82	37
April	99	72	41
May	101	73	42
June	97	65	53
July	90	63	50
August	91	46	50
September	91	42	47
October	85	42	45
November	76	47	
December	68	41	

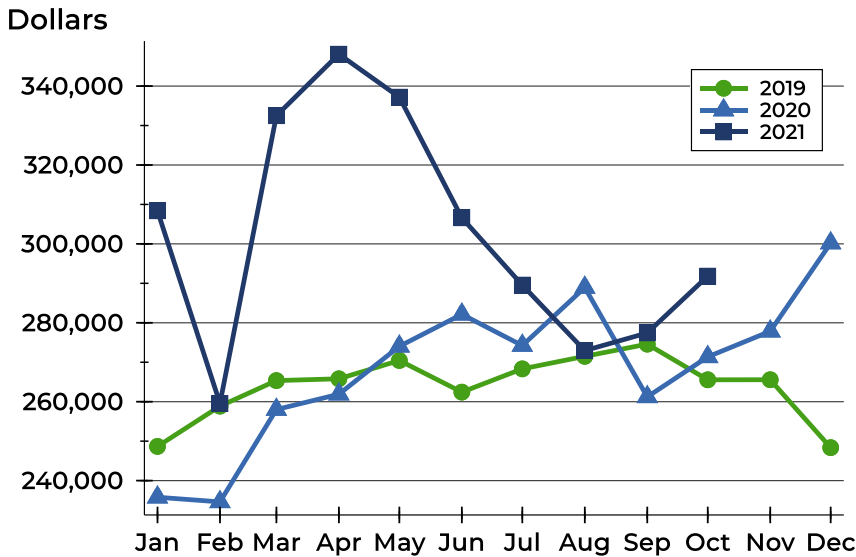
Active Listings by Price Range

Price Range	Active Listings		Months' Supply	List Price		Days on Market		Price as % of Orig.	
	Number	Percent		Average	Median	Avg.	Med.	Avg.	Med.
Below \$25,000	0	0.0%	0.0	N/A	N/A	N/A	N/A	N/A	N/A
\$25,000-\$49,999	1	2.2%	N/A	48,600	48,600	469	469	100.0%	100.0%
\$50,000-\$99,999	0	0.0%	0.0	N/A	N/A	N/A	N/A	N/A	N/A
\$100,000-\$124,999	1	2.2%	1.3	110,000	110,000	129	129	91.7%	91.7%
\$125,000-\$149,999	2	4.4%	1.8	130,000	130,000	26	26	100.0%	100.0%
\$150,000-\$174,999	4	8.9%	2.0	159,450	156,450	59	35	98.4%	100.0%
\$175,000-\$199,999	3	6.7%	1.1	187,667	185,000	44	59	96.7%	95.4%
\$200,000-\$249,999	8	17.8%	1.5	218,550	209,750	52	35	98.6%	100.0%
\$250,000-\$299,999	5	11.1%	0.7	288,940	289,900	67	45	97.1%	100.0%
\$300,000-\$399,999	16	35.6%	2.0	364,150	369,900	68	54	98.8%	100.0%
\$400,000-\$499,999	3	6.7%	1.4	440,000	440,000	46	54	99.0%	99.0%
\$500,000-\$749,999	2	4.4%	1.5	586,950	586,950	79	79	98.1%	98.1%
\$750,000-\$999,999	0	0.0%	N/A	N/A	N/A	N/A	N/A	N/A	N/A
\$1,000,000 and up	0	0.0%	N/A	N/A	N/A	N/A	N/A	N/A	N/A



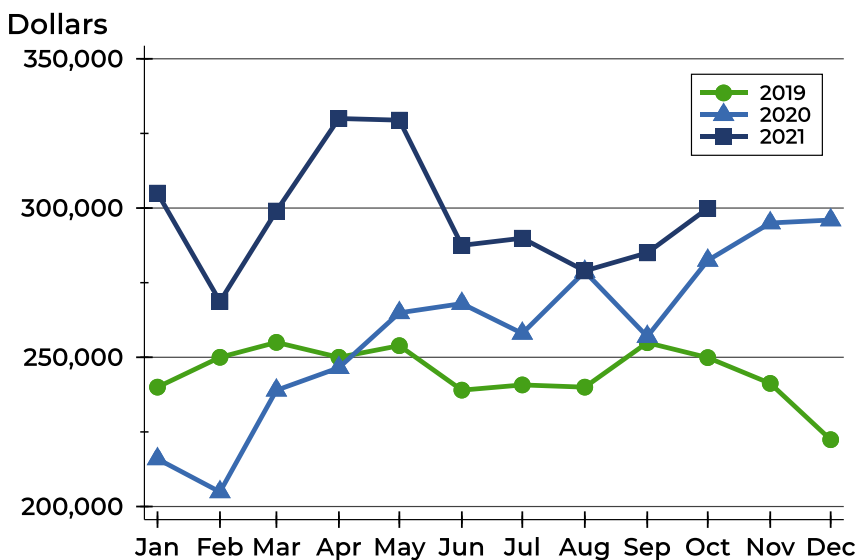
Pottawatomie County Active Listings Analysis

Average Price



Month	2019	2020	2021
January	248,669	235,787	308,385
February	258,874	234,610	259,565
March	265,351	258,014	332,489
April	265,807	261,901	348,095
May	270,449	274,036	337,200
June	262,429	282,150	306,614
July	268,322	274,238	289,574
August	271,501	288,946	272,958
September	274,589	261,224	277,430
October	265,558	271,369	291,840
November	265,572	277,857	
December	248,359	300,205	

Median Price

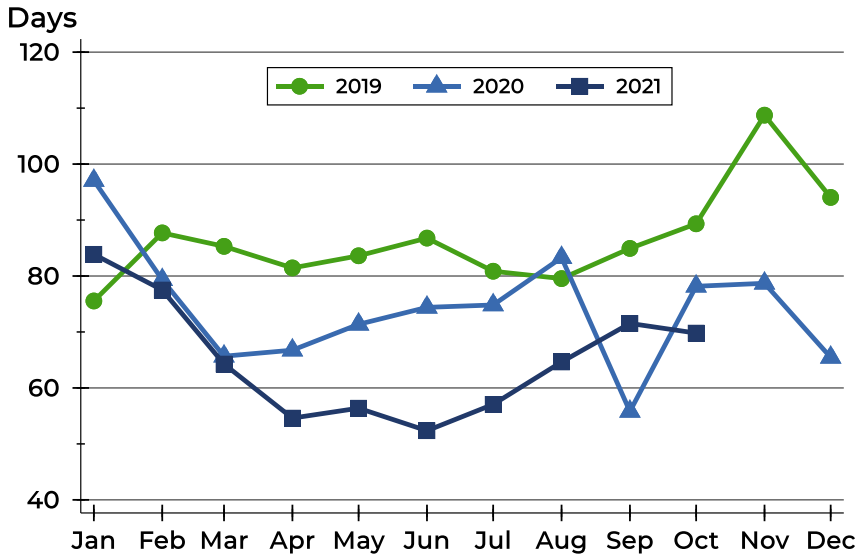


Month	2019	2020	2021
January	240,000	215,950	305,000
February	250,000	204,900	268,700
March	255,000	238,950	299,000
April	250,000	246,500	330,000
May	253,900	264,900	329,450
June	239,000	268,000	287,500
July	240,750	258,000	289,900
August	240,000	278,725	278,950
September	254,900	256,950	285,000
October	249,900	282,450	299,900
November	241,250	295,000	
December	222,400	296,000	



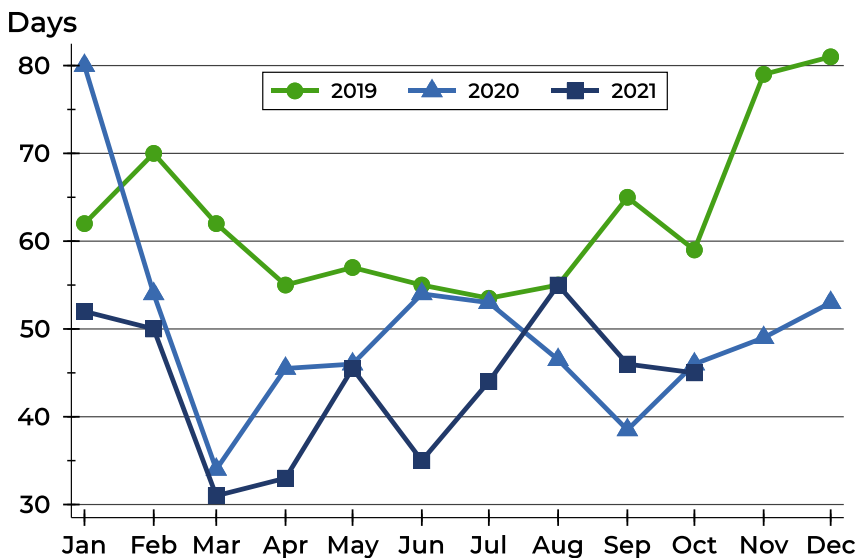
Pottawatomie County Active Listings Analysis

Average DOM



Month	2019	2020	2021
January	76	97	84
February	88	79	78
March	85	66	64
April	81	67	55
May	84	71	56
June	87	74	52
July	81	75	57
August	80	83	65
September	85	56	72
October	89	78	70
November	109	79	
December	94	65	

Median DOM

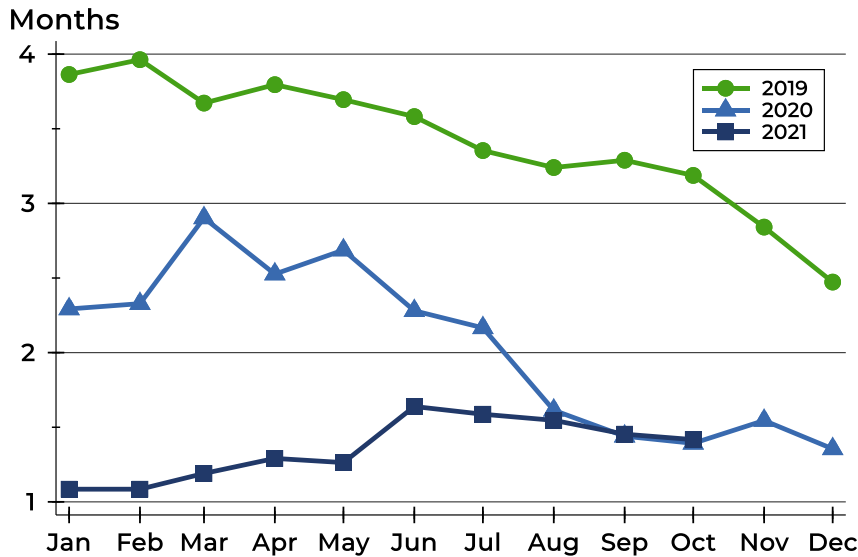


Month	2019	2020	2021
January	62	80	52
February	70	54	50
March	62	34	31
April	55	46	33
May	57	46	46
June	55	54	35
July	54	53	44
August	55	47	55
September	65	39	46
October	59	46	45
November	79	49	
December	81	53	



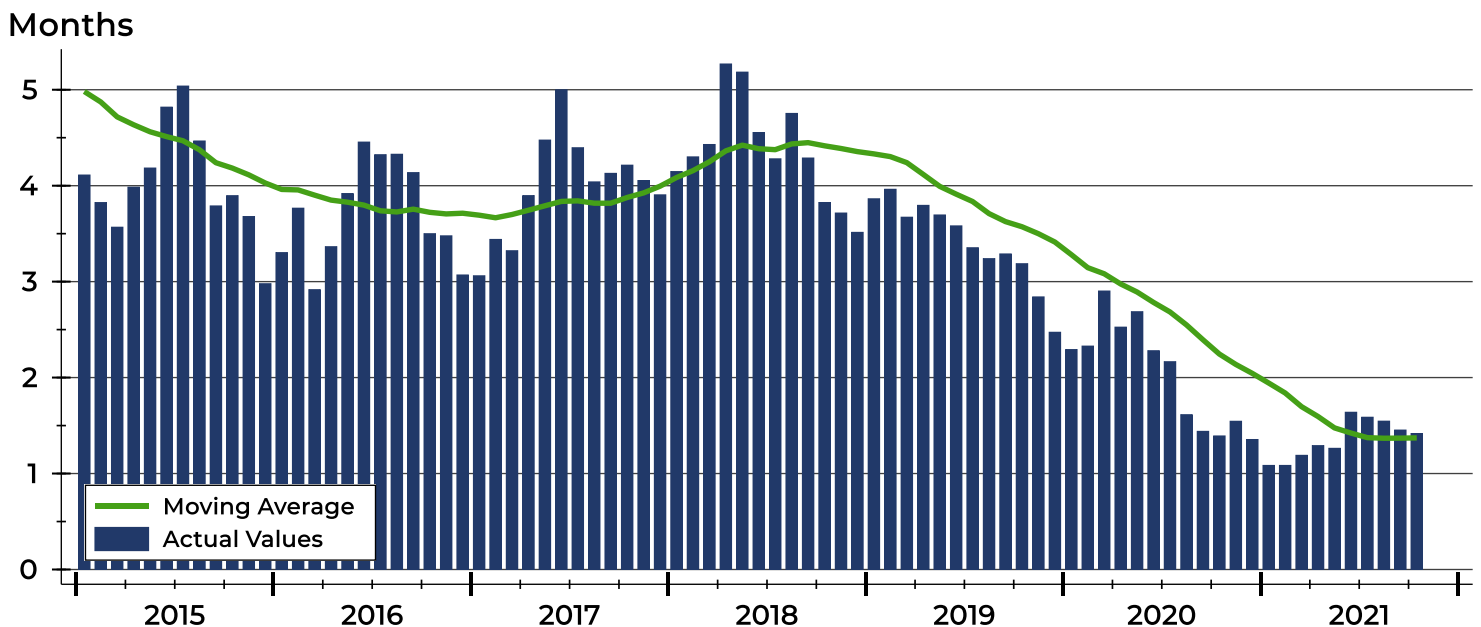
Pottawatomie County Months' Supply Analysis

Months' Supply by Month



Month	2019	2020	2021
January	3.9	2.3	1.1
February	4.0	2.3	1.1
March	3.7	2.9	1.2
April	3.8	2.5	1.3
May	3.7	2.7	1.3
June	3.6	2.3	1.6
July	3.4	2.2	1.6
August	3.2	1.6	1.5
September	3.3	1.4	1.5
October	3.2	1.4	1.4
November	2.8	1.5	
December	2.5	1.4	

History of Month's Supply





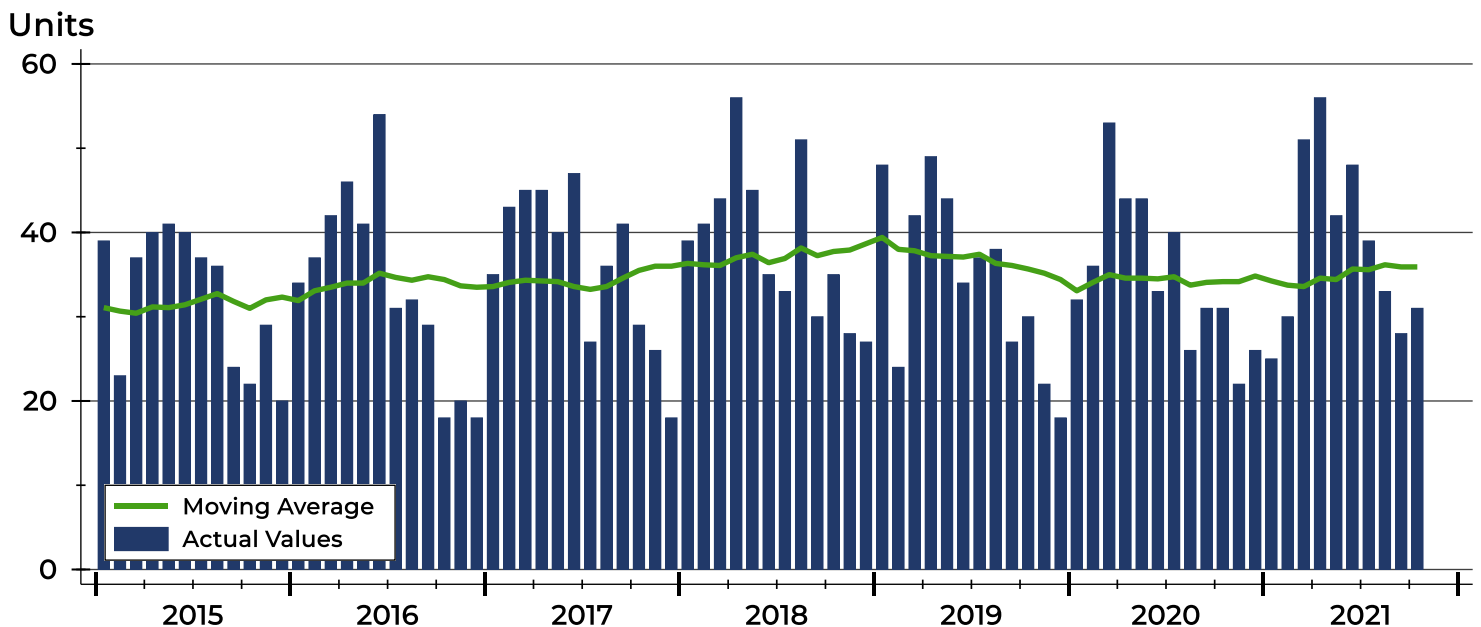
Pottawatomie County New Listings Analysis

Summary Statistics for New Listings		2021	October 2020	Change
Current Month	New Listings	31	31	0.0%
	Volume (1,000s)	9,023	8,041	12.2%
	Average List Price	291,065	259,397	12.2%
	Median List Price	290,000	237,500	22.1%
Year-to-Date	New Listings	383	370	3.5%
	Volume (1,000s)	107,692	96,981	11.0%
	Average List Price	281,181	262,110	7.3%
	Median List Price	274,900	256,950	7.0%

A total of 31 new listings were added in Pottawatomie County during October, the same figure as reported in 2020. Year-to-date Pottawatomie County has seen 383 new listings.

The median list price of these homes was \$290,000 up from \$237,500 in 2020.

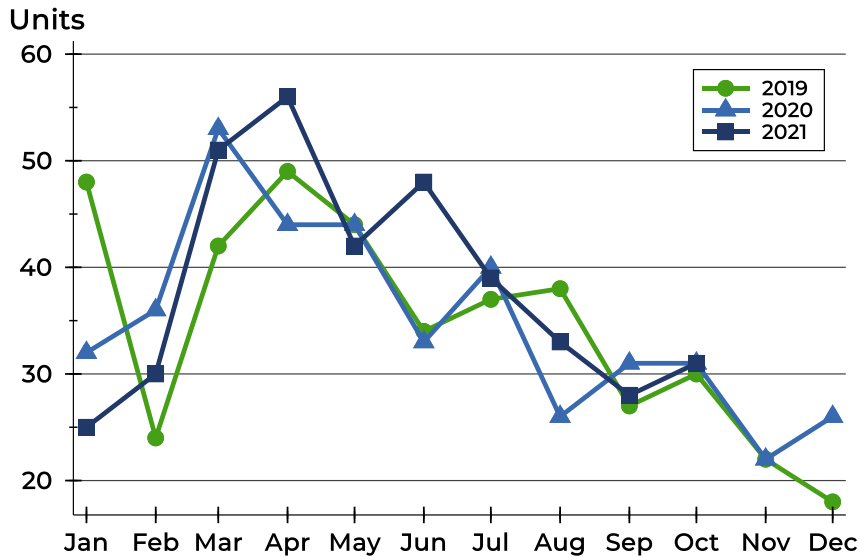
History of New Listings





Pottawatomie County New Listings Analysis

New Listings by Month



Month	2019	2020	2021
January	48	32	25
February	24	36	30
March	42	53	51
April	49	44	56
May	44	44	42
June	34	33	48
July	37	40	39
August	38	26	33
September	27	31	28
October	30	31	31
November	22	22	
December	18	26	

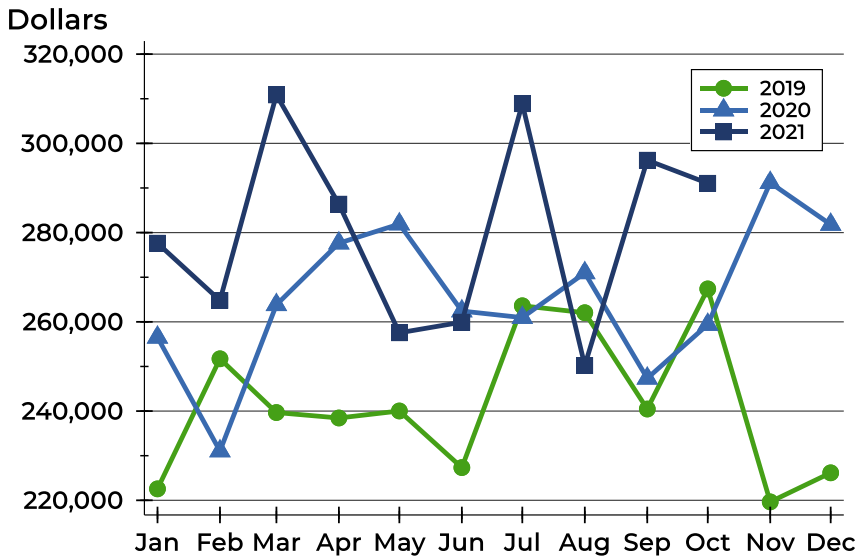
New Listings by Price Range

Price Range	New Listings		List Price		Days on Market		Price as % of Orig.	
	Number	Percent	Average	Median	Avg.	Med.	Avg.	Med.
Below \$25,000	0	0.0%	N/A	N/A	N/A	N/A	N/A	N/A
\$25,000-\$49,999	0	0.0%	N/A	N/A	N/A	N/A	N/A	N/A
\$50,000-\$99,999	0	0.0%	N/A	N/A	N/A	N/A	N/A	N/A
\$100,000-\$124,999	0	0.0%	N/A	N/A	N/A	N/A	N/A	N/A
\$125,000-\$149,999	1	3.2%	139,900	139,900	11	11	100.0%	100.0%
\$150,000-\$174,999	2	6.5%	152,500	152,500	25	25	96.9%	96.9%
\$175,000-\$199,999	4	12.9%	185,225	181,500	9	8	98.9%	100.0%
\$200,000-\$249,999	5	16.1%	239,400	240,000	6	3	99.6%	100.0%
\$250,000-\$299,999	4	12.9%	287,475	287,450	10	9	99.6%	100.0%
\$300,000-\$399,999	13	41.9%	349,254	354,900	42	17	99.5%	100.0%
\$400,000-\$499,999	2	6.5%	475,000	475,000	24	24	100.0%	100.0%
\$500,000-\$749,999	0	0.0%	N/A	N/A	N/A	N/A	N/A	N/A
\$750,000-\$999,999	0	0.0%	N/A	N/A	N/A	N/A	N/A	N/A
\$1,000,000 and up	0	0.0%	N/A	N/A	N/A	N/A	N/A	N/A



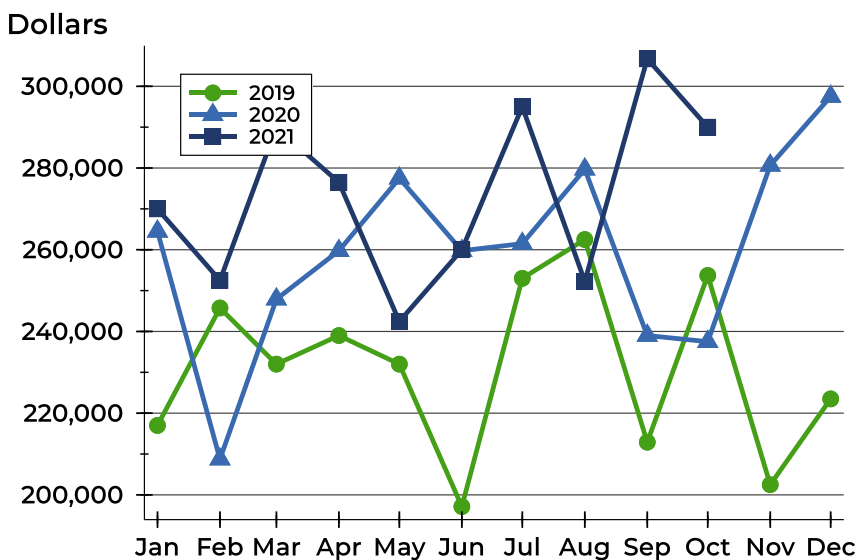
Pottawatomie County New Listings Analysis

Average Price



Month	2019	2020	2021
January	222,566	256,523	277,640
February	251,719	231,047	264,803
March	239,671	263,816	310,863
April	238,453	277,634	286,386
May	240,025	281,910	257,544
June	227,338	262,417	259,931
July	263,600	260,954	308,895
August	262,045	270,965	250,224
September	240,467	247,342	296,235
October	267,382	259,397	291,065
November	219,650	291,191	
December	226,161	281,819	

Median Price



Month	2019	2020	2021
January	217,000	264,500	270,000
February	245,750	208,750	252,500
March	232,000	247,900	289,900
April	239,000	259,750	276,500
May	232,000	277,500	242,450
June	197,150	259,750	260,000
July	253,000	261,500	295,000
August	262,500	279,700	252,250
September	212,900	239,000	306,725
October	253,700	237,500	290,000
November	202,500	280,635	
December	223,500	297,500	



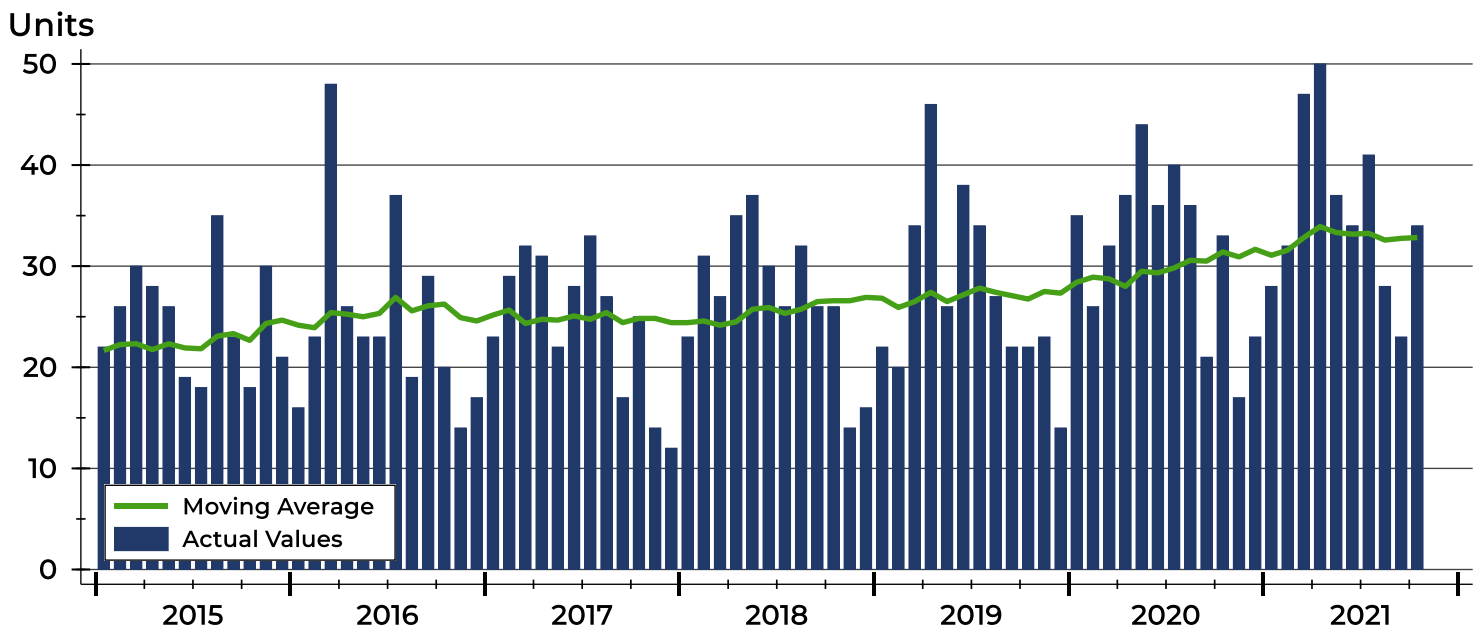
Pottawatomie County Contracts Written Analysis

Summary Statistics for Contracts Written		2021	October 2020	Change	2021	Year-to-Date 2020	Change
Contracts Written		34	33	3.0%	354	340	4.1%
Volume (1,000s)		8,840	8,584	3.0%	96,865	87,107	11.2%
Average	Sale Price	259,988	260,115	0.0%	273,630	256,198	6.8%
	Days on Market	49	25	96.0%	31	43	-27.9%
	Percent of Original	98.5%	100.6%	-2.1%	99.5%	97.7%	1.8%
Median	Sale Price	267,000	239,000	11.7%	270,000	249,945	8.0%
	Days on Market	16	12	33.3%	10	21	-52.4%
	Percent of Original	100.0%	100.0%	0.0%	100.0%	99.1%	0.9%

A total of 34 contracts for sale were written in Pottawatomie County during the month of October, up from 33 in 2020. The median list price of these homes was \$267,000, up from \$239,000 the prior year.

Half of the homes that went under contract in October were on the market less than 16 days, compared to 12 days in October 2020.

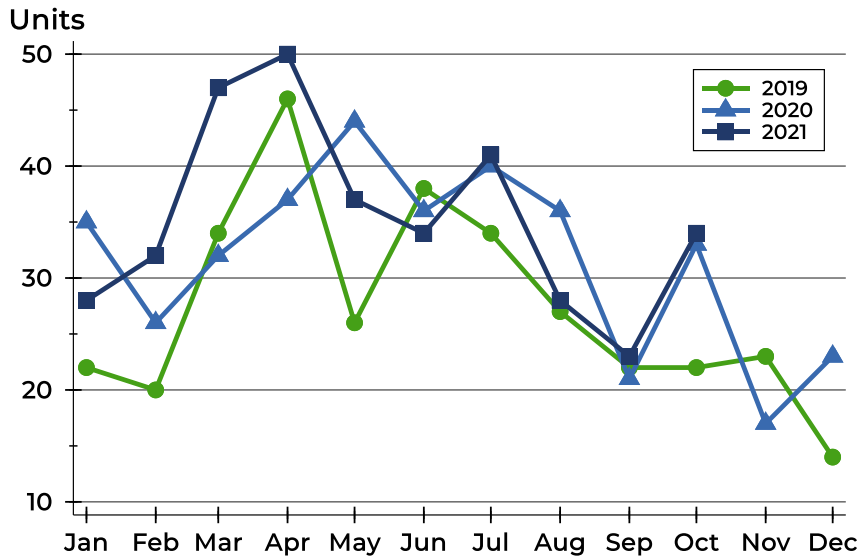
History of Contracts Written





Pottawatomie County Contracts Written Analysis

Contracts Written by Month



Month	2019	2020	2021
January	22	35	28
February	20	26	32
March	34	32	47
April	46	37	50
May	26	44	37
June	38	36	34
July	34	40	41
August	27	36	28
September	22	21	23
October	22	33	34
November	23	17	
December	14	23	

Contracts Written by Price Range

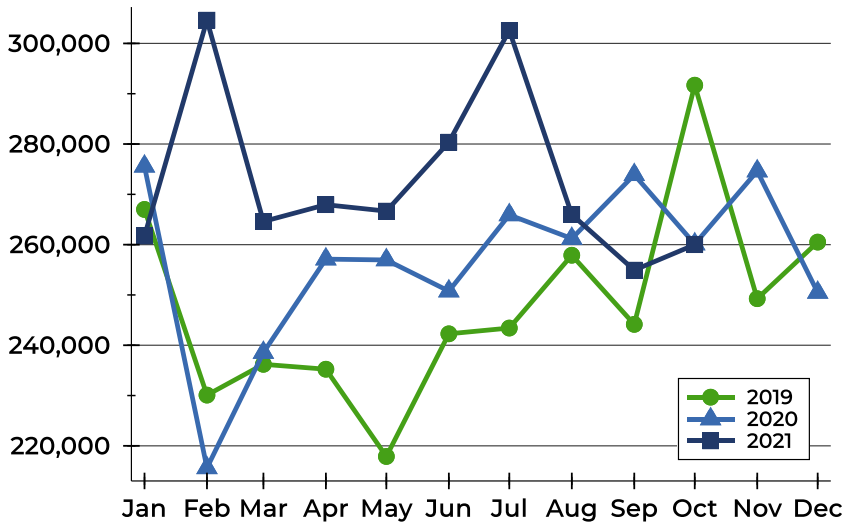
Price Range	Contracts Written		List Price		Days on Market		Price as % of Orig.	
	Number	Percent	Average	Median	Avg.	Med.	Avg.	Med.
Below \$25,000	0	0.0%	N/A	N/A	N/A	N/A	N/A	N/A
\$25,000-\$49,999	1	2.9%	48,600	48,600	466	466	100.0%	100.0%
\$50,000-\$99,999	0	0.0%	N/A	N/A	N/A	N/A	N/A	N/A
\$100,000-\$124,999	2	5.9%	113,000	113,000	72	72	96.2%	96.2%
\$125,000-\$149,999	1	2.9%	139,900	139,900	11	11	100.0%	100.0%
\$150,000-\$174,999	3	8.8%	154,833	155,000	48	47	96.0%	99.7%
\$175,000-\$199,999	3	8.8%	185,667	184,000	8	3	100.0%	100.0%
\$200,000-\$249,999	7	20.6%	228,557	230,000	25	3	99.4%	100.0%
\$250,000-\$299,999	3	8.8%	286,667	285,000	7	3	100.6%	100.0%
\$300,000-\$399,999	13	38.2%	346,438	359,000	47	16	97.9%	100.0%
\$400,000-\$499,999	1	2.9%	440,000	440,000	53	53	98.0%	98.0%
\$500,000-\$749,999	0	0.0%	N/A	N/A	N/A	N/A	N/A	N/A
\$750,000-\$999,999	0	0.0%	N/A	N/A	N/A	N/A	N/A	N/A
\$1,000,000 and up	0	0.0%	N/A	N/A	N/A	N/A	N/A	N/A



Pottawatomie County Contracts Written Analysis

Average Price

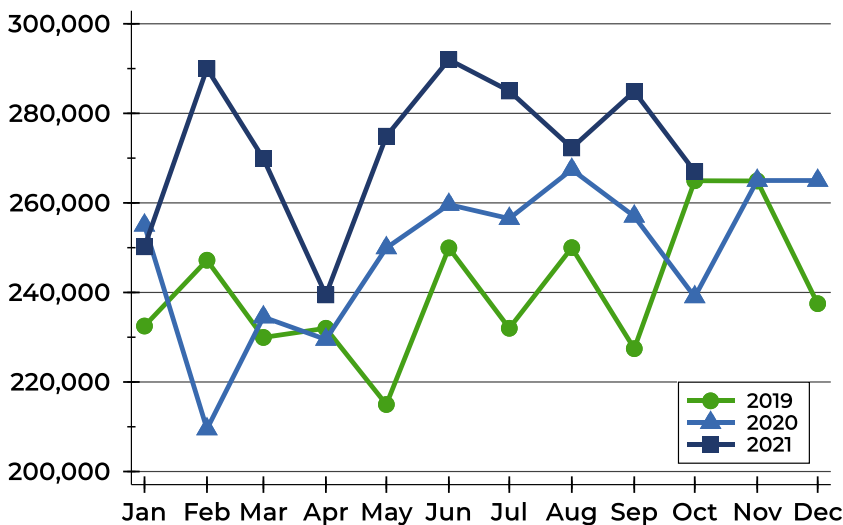
Dollars



Month	2019	2020	2021
January	266,998	275,577	261,718
February	230,090	215,623	304,628
March	236,215	238,542	264,610
April	235,235	257,123	267,945
May	217,892	256,959	266,667
June	242,275	250,765	280,366
July	243,422	265,908	302,572
August	257,893	261,211	265,977
September	244,155	273,890	254,934
October	291,700	260,115	259,988
November	249,259	274,623	
December	260,507	250,496	

Median Price

Dollars

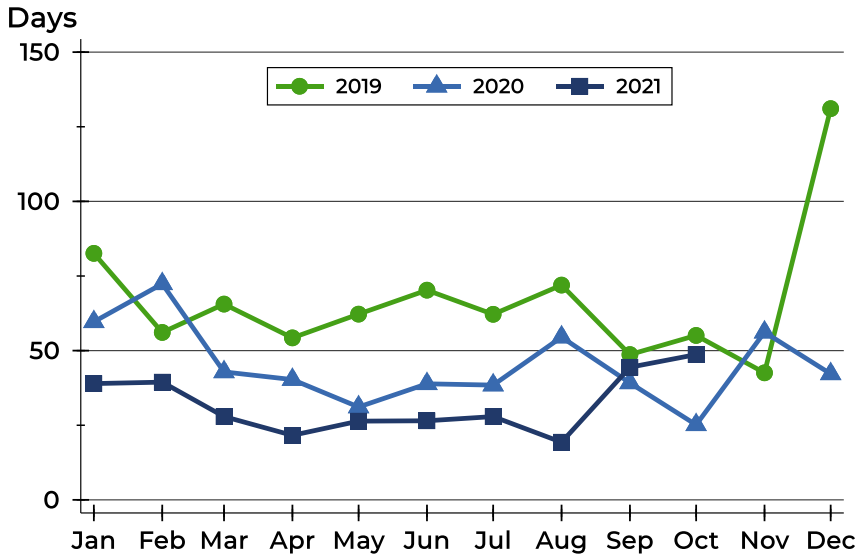


Month	2019	2020	2021
January	232,500	255,000	250,200
February	247,200	209,500	290,000
March	229,950	234,500	269,900
April	232,000	229,500	239,450
May	214,975	249,945	274,900
June	249,950	259,625	292,000
July	232,000	256,500	285,000
August	250,000	267,450	272,280
September	227,450	257,000	284,900
October	264,950	239,000	267,000
November	264,900	265,000	
December	237,500	265,000	



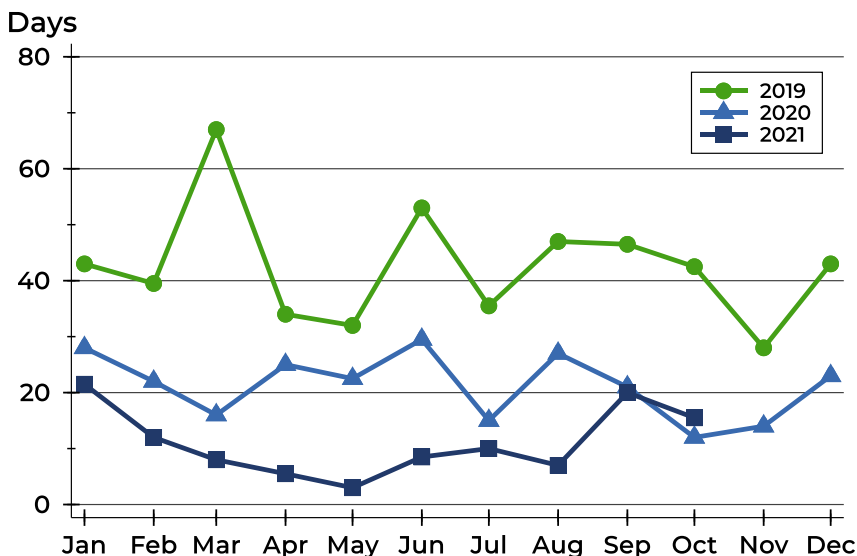
Pottawatomie County Contracts Written Analysis

Average DOM



Month	2019	2020	2021
January	83	60	39
February	56	72	39
March	66	43	28
April	54	40	22
May	62	31	26
June	70	39	27
July	62	38	28
August	72	55	19
September	49	39	44
October	55	25	49
November	43	56	
December	131	42	

Median DOM



Month	2019	2020	2021
January	43	28	22
February	40	22	12
March	67	16	8
April	34	25	6
May	32	23	3
June	53	30	9
July	36	15	10
August	47	27	7
September	47	21	20
October	43	12	16
November	28	14	
December	43	23	



Pottawatomie County Pending Contracts Analysis

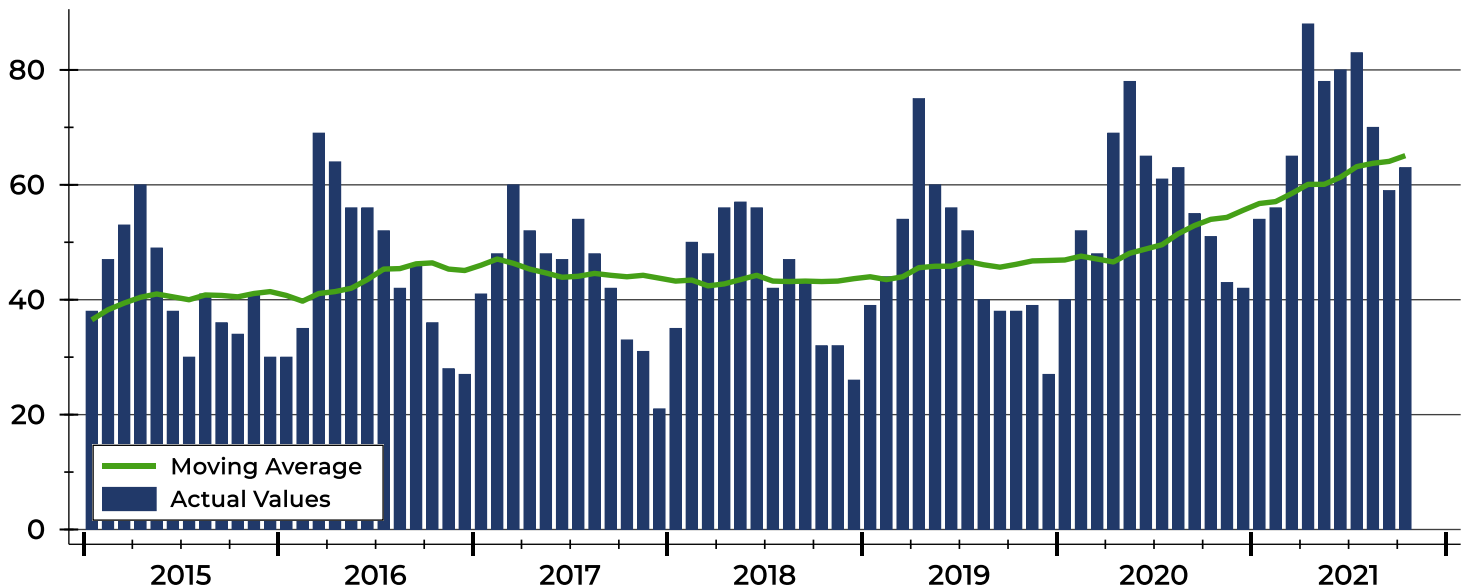
Summary Statistics for Pending Contracts		End of October		
		2021	2020	Change
Pending Contracts		63	51	23.5%
Volume (1,000s)		16,976	13,707	23.8%
Average	List Price	269,456	268,773	0.3%
	Days on Market	39	33	18.2%
	Percent of Original	99.3%	100.4%	-1.1%
Median	List Price	284,900	250,000	14.0%
	Days on Market	15	15	0.0%
	Percent of Original	100.0%	100.0%	0.0%

A total of 63 listings in Pottawatomie County had contracts pending at the end of October, up from 51 contracts pending at the end of October 2020.

Pending contracts reflect listings with a contract in place at the end of the month. In contrast, contracts written measures the number of listings put under contract during the month.

History of Pending Contracts

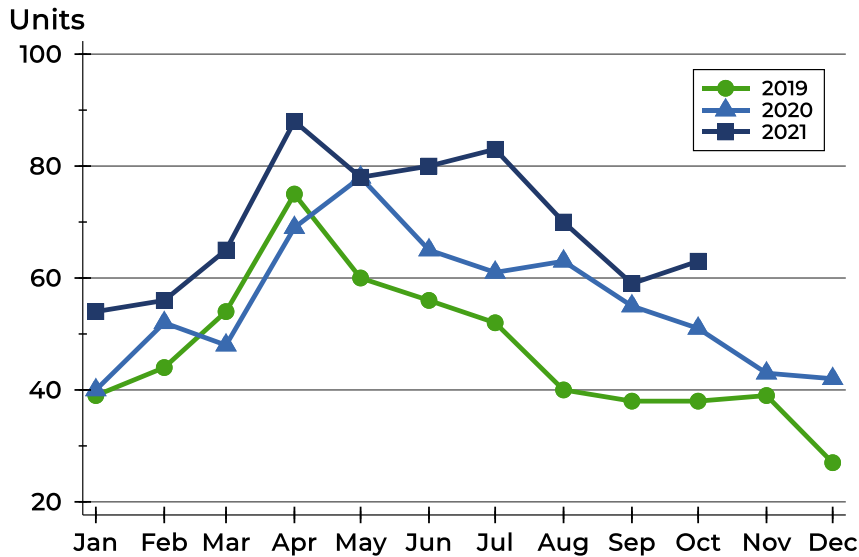
Units





Pottawatomie County Pending Contracts Analysis

Pending Contracts by Month



Month	2019	2020	2021
January	39	40	54
February	44	52	56
March	54	48	65
April	75	69	88
May	60	78	78
June	56	65	80
July	52	61	83
August	40	63	70
September	38	55	59
October	38	51	63
November	39	43	
December	27	42	

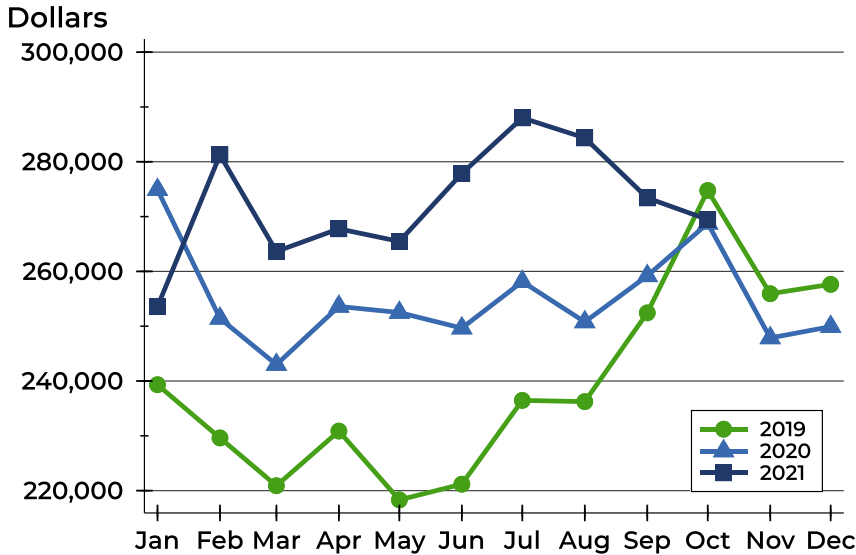
Pending Contracts by Price Range

Price Range	Pending Contracts		List Price		Days on Market		Price as % of Orig.	
	Number	Percent	Average	Median	Avg.	Med.	Avg.	Med.
Below \$25,000	0	0.0%	N/A	N/A	N/A	N/A	N/A	N/A
\$25,000-\$49,999	0	0.0%	N/A	N/A	N/A	N/A	N/A	N/A
\$50,000-\$99,999	2	3.2%	80,000	80,000	59	59	97.2%	97.2%
\$100,000-\$124,999	3	4.8%	115,333	120,000	81	99	93.7%	92.3%
\$125,000-\$149,999	1	1.6%	139,900	139,900	11	11	100.0%	100.0%
\$150,000-\$174,999	2	3.2%	155,000	155,000	49	49	95.6%	95.6%
\$175,000-\$199,999	5	7.9%	185,380	184,900	9	6	99.5%	100.0%
\$200,000-\$249,999	14	22.2%	230,143	229,750	27	19	99.4%	100.0%
\$250,000-\$299,999	10	15.9%	280,814	284,950	32	23	101.9%	100.0%
\$300,000-\$399,999	24	38.1%	342,657	339,800	52	16	99.3%	100.0%
\$400,000-\$499,999	2	3.2%	419,500	419,500	9	9	100.0%	100.0%
\$500,000-\$749,999	0	0.0%	N/A	N/A	N/A	N/A	N/A	N/A
\$750,000-\$999,999	0	0.0%	N/A	N/A	N/A	N/A	N/A	N/A
\$1,000,000 and up	0	0.0%	N/A	N/A	N/A	N/A	N/A	N/A



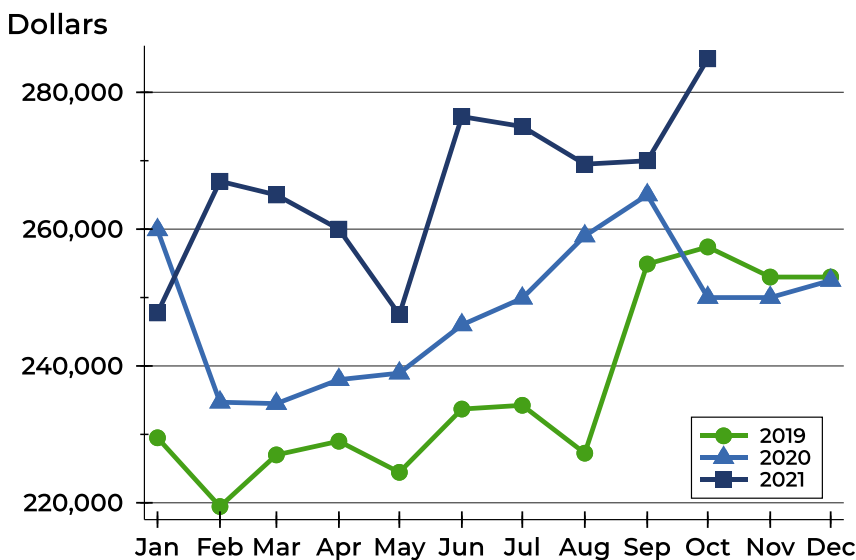
Pottawatomie County Pending Contracts Analysis

Average Price



Month	2019	2020	2021
January	239,327	274,908	253,565
February	229,622	251,427	281,241
March	220,896	242,995	263,641
April	230,873	253,607	267,766
May	218,317	252,496	265,473
June	221,186	249,649	277,862
July	236,469	258,138	288,006
August	236,240	250,781	284,350
September	252,437	259,189	273,403
October	274,761	268,773	269,456
November	255,927	247,860	
December	257,641	249,923	

Median Price

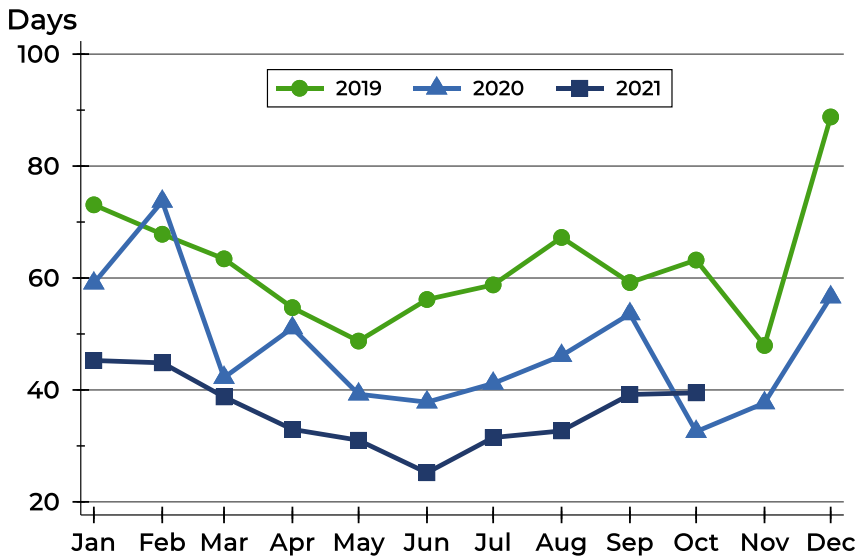


Month	2019	2020	2021
January	229,500	259,900	247,750
February	219,450	234,700	267,000
March	227,000	234,500	265,000
April	229,000	238,000	260,000
May	224,450	238,950	247,500
June	233,700	246,000	276,450
July	234,250	249,900	275,000
August	227,250	259,000	269,500
September	254,900	265,000	270,000
October	257,400	250,000	284,900
November	253,000	250,000	
December	253,000	252,500	



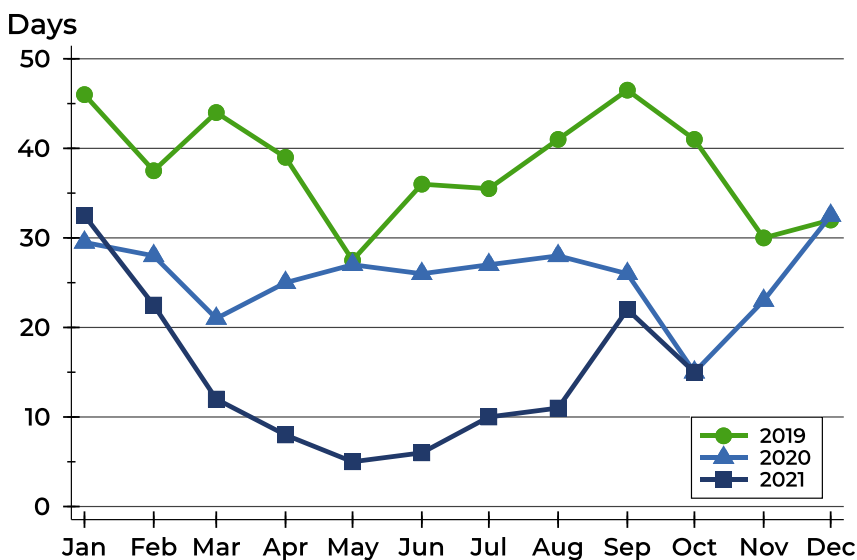
Pottawatomie County Pending Contracts Analysis

Average DOM



Month	2019	2020	2021
January	73	59	45
February	68	74	45
March	63	42	39
April	55	51	33
May	49	39	31
June	56	38	25
July	59	41	31
August	67	46	33
September	59	54	39
October	63	33	39
November	48	38	
December	89	57	

Median DOM



Month	2019	2020	2021
January	46	30	33
February	38	28	23
March	44	21	12
April	39	25	8
May	28	27	5
June	36	26	6
July	36	27	10
August	41	28	11
September	47	26	22
October	41	15	15
November	30	23	
December	32	33	