



**June
2023**

Flint Hills MLS Statistics



**FLINT HILLS
ASSOCIATION
OF REALTORS®**

Pottawatomie County Housing Report



Market Overview

Pottawatomie County Home Sales Fell in June

Total home sales in Pottawatomie County fell last month to 31 units, compared to 49 units in June 2022. Total sales volume was \$10.9 million, down from a year earlier.

The median sale price in June was \$349,900, up from \$330,000 a year earlier. Homes that sold in June were typically on the market for 26 days and sold for 100.0% of their list prices.

Pottawatomie County Active Listings Up at End of June

The total number of active listings in Pottawatomie County at the end of June was 59 units, up from 47 at the same point in 2022. This represents a 2.4 months' supply of homes available for sale. The median list price of homes on the market at the end of June was \$344,000.

During June, a total of 35 contracts were written up from 28 in June 2022. At the end of the month, there were 53 contracts still pending.

Report Contents

- Summary Statistics – Page 2
- Closed Listing Analysis – Page 3
- Active Listings Analysis – Page 7
- Months' Supply Analysis – Page 11
- New Listings Analysis – Page 12
- Contracts Written Analysis – Page 15
- Pending Contracts Analysis – Page 19

Contact Information

Margaret Pendleton, Association Executive
 Flint Hills Association of REALTORS®
 205 S. Seth Child Road
 Manhattan, KS 66502
 785-776-1203
ae@flinthillsrealtors.net
www.flinthillsrealtors.net



**June
2023**

Flint Hills MLS Statistics



**FLINT HILLS
ASSOCIATION
OF REALTORS®**

Pottawatomie County Summary Statistics

June MLS Statistics Three-year History		Current Month			Year-to-Date		
		2023	2022	2021	2023	2022	2021
Home Sales		31	49	41	136	176	194
Change from prior year		-36.7%	19.5%	-21.2%	-22.7%	-9.3%	14.8%
Active Listings		59	47	53	N/A	N/A	N/A
Change from prior year		25.5%	-11.3%	-18.5%			
Months' Supply		2.4	1.5	1.6	N/A	N/A	N/A
Change from prior year		60.0%	-6.3%	-30.4%			
New Listings		35	34	48	196	232	253
Change from prior year		2.9%	-29.2%	45.5%	-15.5%	-8.3%	4.5%
Contracts Written		35	28	34	159	187	229
Change from prior year		25.0%	-17.6%	-5.6%	-15.0%	-18.3%	9.0%
Pending Contracts		53	56	80	N/A	N/A	N/A
Change from prior year		-5.4%	-30.0%	23.1%			
Sales Volume (1,000s)		10,903	15,617	11,361	44,567	53,680	51,987
Change from prior year		-30.2%	37.5%	-16.3%	-17.0%	3.3%	22.6%
Average	Sale Price	351,710	318,706	277,099	327,696	305,002	267,972
	Change from prior year	10.4%	15.0%	6.2%	7.4%	13.8%	6.8%
	List Price of Actives	393,232	370,121	306,614	N/A	N/A	N/A
	Change from prior year	6.2%	20.7%	8.7%			
	Days on Market	48	16	32	50	24	36
Change from prior year	200.0%	-50.0%	-31.9%	108.3%	-33.3%	-37.9%	
Percent of List	99.6%	100.9%	101.1%	99.6%	100.9%	99.7%	
Change from prior year	-1.3%	-0.2%	2.8%	-1.3%	1.2%	0.8%	
Percent of Original	97.9%	100.5%	100.2%	97.9%	100.4%	98.8%	
Change from prior year	-2.6%	0.3%	4.3%	-2.5%	1.6%	1.6%	
Median	Sale Price	349,900	330,000	260,000	325,500	310,000	268,000
	Change from prior year	6.0%	26.9%	10.1%	5.0%	15.7%	12.1%
	List Price of Actives	344,000	389,900	287,500	N/A	N/A	N/A
	Change from prior year	-11.8%	35.6%	7.3%			
	Days on Market	26	7	7	20	6	11
Change from prior year	271.4%	0.0%	-79.4%	233.3%	-45.5%	-57.7%	
Percent of List	100.0%	100.0%	100.0%	100.0%	100.0%	100.0%	
Change from prior year	0.0%	0.0%	0.7%	0.0%	0.0%	0.5%	
Percent of Original	100.0%	100.0%	100.0%	100.0%	100.0%	100.0%	
Change from prior year	0.0%	0.0%	2.0%	0.0%	0.0%	1.3%	

Note: Year-to-date statistics cannot be calculated for Active Listings, Months' Supply and Pending Contracts.



Pottawatomie County Closed Listings Analysis

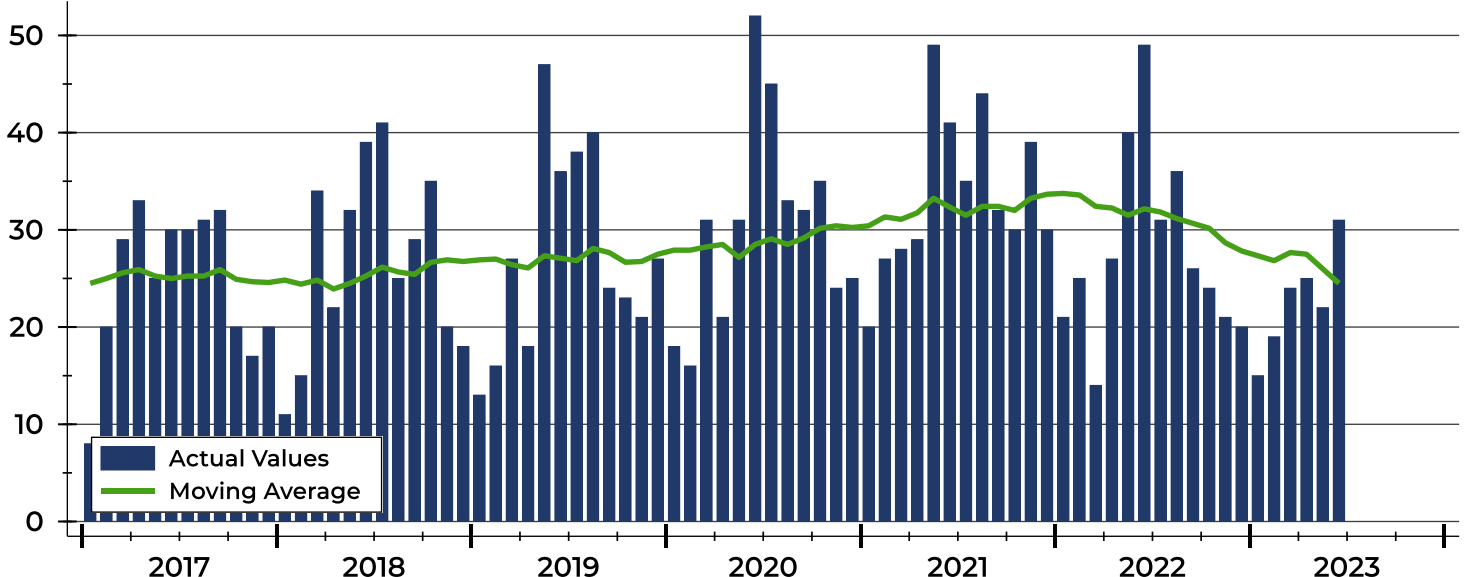
Summary Statistics for Closed Listings		2023	June 2022	Change	2023	Year-to-Date 2022	Change
Closed Listings		31	49	-36.7%	136	176	-22.7%
Volume (1,000s)		10,903	15,617	-30.2%	44,567	53,680	-17.0%
Months' Supply		2.4	1.5	60.0%	N/A	N/A	N/A
Average	Sale Price	351,710	318,706	10.4%	327,696	305,002	7.4%
	Days on Market	48	16	200.0%	50	24	108.3%
	Percent of List	99.6%	100.9%	-1.3%	99.6%	100.9%	-1.3%
	Percent of Original	97.9%	100.5%	-2.6%	97.9%	100.4%	-2.5%
Median	Sale Price	349,900	330,000	6.0%	325,500	310,000	5.0%
	Days on Market	26	7	271.4%	20	6	233.3%
	Percent of List	100.0%	100.0%	0.0%	100.0%	100.0%	0.0%
	Percent of Original	100.0%	100.0%	0.0%	100.0%	100.0%	0.0%

A total of 31 homes sold in Pottawatomie County in June, down from 49 units in June 2022. Total sales volume fell to \$10.9 million compared to \$15.6 million in the previous year.

The median sales price in June was \$349,900, up 6.0% compared to the prior year. Median days on market was 26 days, up from 14 days in May, and up from 7 in June 2022.

History of Closed Listings

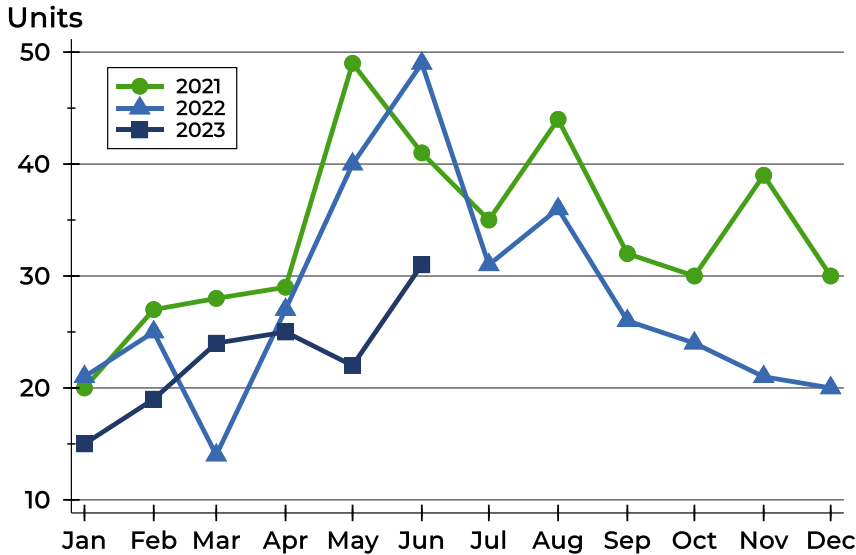
Units





Pottawatomie County Closed Listings Analysis

Closed Listings by Month



Month	2021	2022	2023
January	20	21	15
February	27	25	19
March	28	14	24
April	29	27	25
May	49	40	22
June	41	49	31
July	35	31	31
August	44	36	31
September	32	26	31
October	30	24	31
November	39	21	31
December	30	20	31

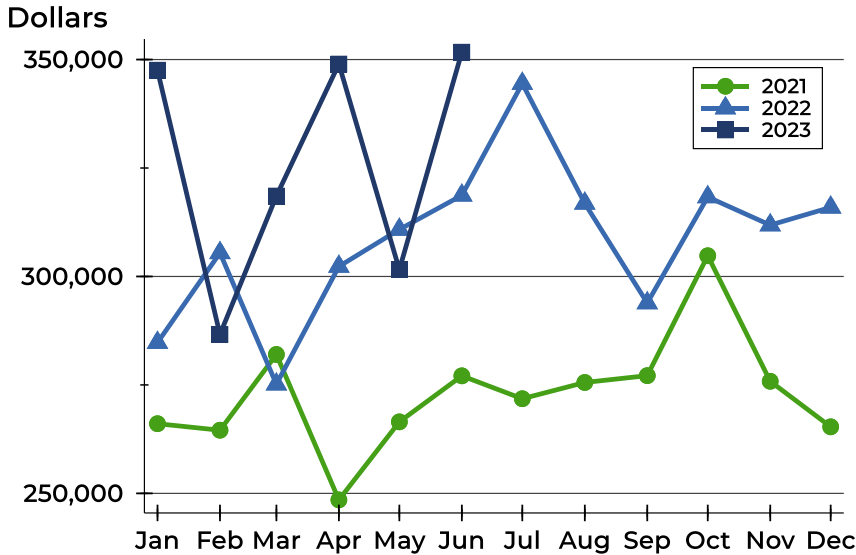
Closed Listings by Price Range

Price Range	Sales		Months' Supply	Sale Price		Days on Market		Price as % of List		Price as % of Orig.	
	Number	Percent		Average	Median	Avg.	Med.	Avg.	Med.	Avg.	Med.
Below \$25,000	0	0.0%	N/A	N/A	N/A	N/A	N/A	N/A	N/A	N/A	N/A
\$25,000-\$49,999	0	0.0%	N/A	N/A	N/A	N/A	N/A	N/A	N/A	N/A	N/A
\$50,000-\$99,999	0	0.0%	6.0	N/A	N/A	N/A	N/A	N/A	N/A	N/A	N/A
\$100,000-\$124,999	0	0.0%	N/A	N/A	N/A	N/A	N/A	N/A	N/A	N/A	N/A
\$125,000-\$149,999	0	0.0%	N/A	N/A	N/A	N/A	N/A	N/A	N/A	N/A	N/A
\$150,000-\$174,999	2	6.5%	1.7	168,250	168,250	41	41	97.6%	97.6%	88.6%	88.6%
\$175,000-\$199,999	0	0.0%	N/A	N/A	N/A	N/A	N/A	N/A	N/A	N/A	N/A
\$200,000-\$249,999	3	9.7%	1.7	235,967	235,000	32	35	98.3%	99.1%	97.1%	95.9%
\$250,000-\$299,999	3	9.7%	1.8	287,000	285,000	62	32	99.0%	98.9%	99.0%	98.9%
\$300,000-\$399,999	18	58.1%	1.7	354,478	352,500	58	29	99.8%	100.0%	98.1%	100.0%
\$400,000-\$499,999	2	6.5%	3.0	411,000	411,000	29	29	101.0%	101.0%	101.0%	101.0%
\$500,000-\$749,999	3	9.7%	7.5	598,333	600,000	4	4	100.6%	100.0%	100.6%	100.0%
\$750,000-\$999,999	0	0.0%	N/A	N/A	N/A	N/A	N/A	N/A	N/A	N/A	N/A
\$1,000,000 and up	0	0.0%	N/A	N/A	N/A	N/A	N/A	N/A	N/A	N/A	N/A



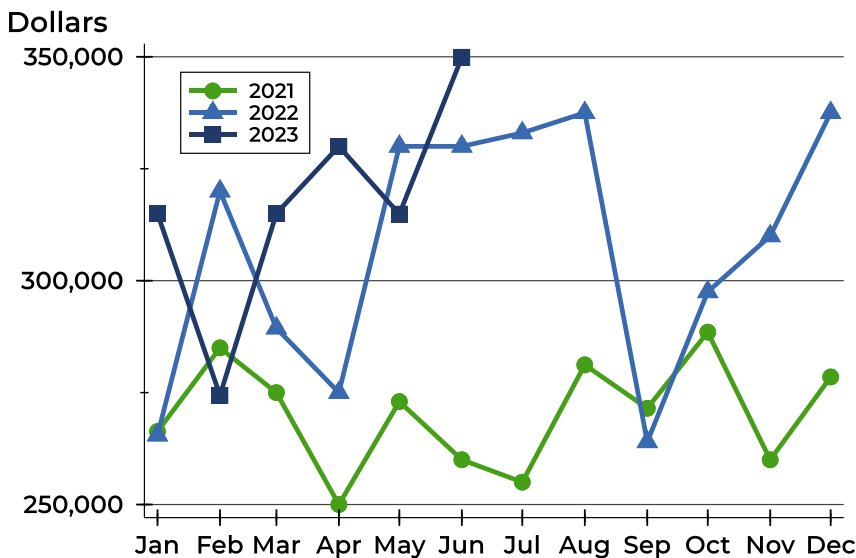
Pottawatomie County Closed Listings Analysis

Average Price



Month	2021	2022	2023
January	266,064	284,752	347,548
February	264,562	305,443	286,647
March	282,018	275,167	318,546
April	248,504	302,308	348,976
May	266,490	310,831	301,576
June	277,099	318,706	351,710
July	271,821	344,468	
August	275,567	316,847	
September	277,140	293,881	
October	304,775	318,325	
November	275,848	311,843	
December	265,343	315,935	

Median Price

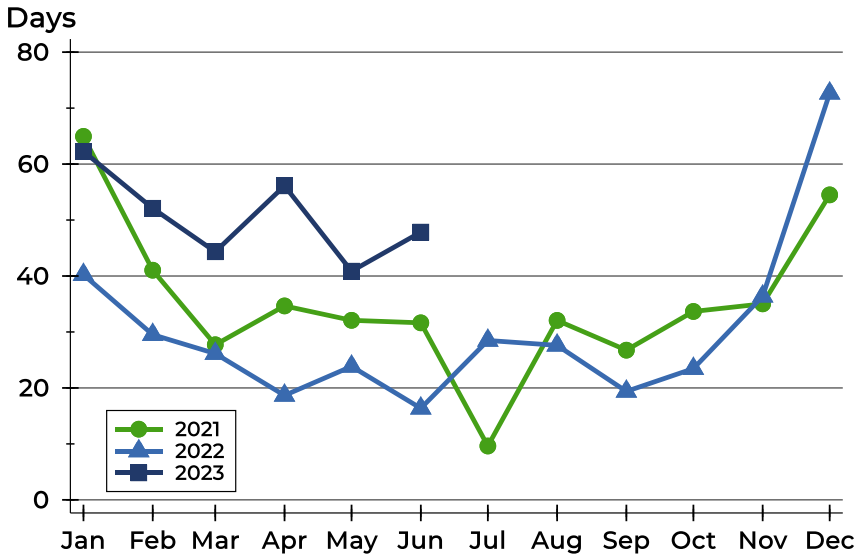


Month	2021	2022	2023
January	266,314	265,500	315,000
February	285,000	320,000	274,400
March	275,000	289,400	315,000
April	250,000	275,000	330,000
May	273,000	330,000	314,875
June	260,000	330,000	349,900
July	255,000	333,000	
August	281,200	337,500	
September	271,500	264,000	
October	288,500	297,500	
November	260,000	310,000	
December	278,500	337,500	



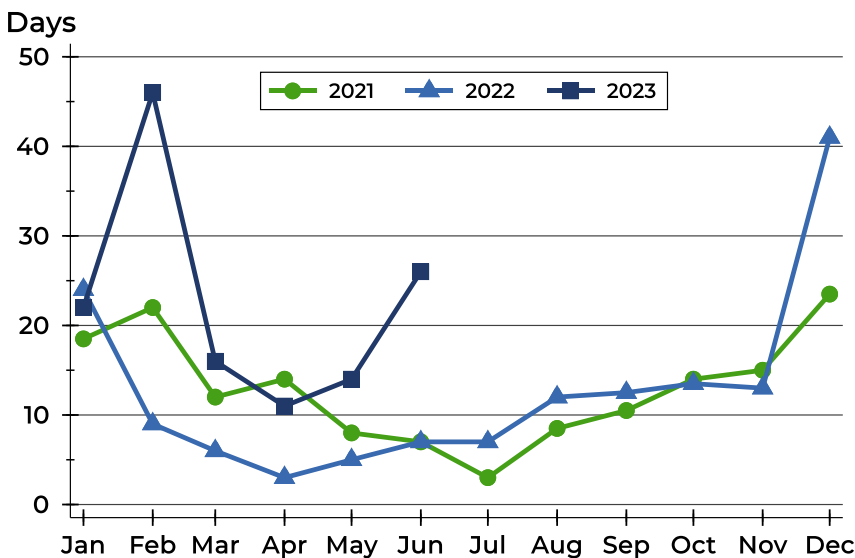
Pottawatomie County Closed Listings Analysis

Average DOM



Month	2021	2022	2023
January	65	40	62
February	41	30	52
March	28	26	44
April	35	19	56
May	32	24	41
June	32	16	48
July	10	28	
August	32	28	
September	27	19	
October	34	23	
November	35	36	
December	55	73	

Median DOM



Month	2021	2022	2023
January	19	24	22
February	22	9	46
March	12	6	16
April	14	3	11
May	8	5	14
June	7	7	26
July	3	7	
August	9	12	
September	11	13	
October	14	14	
November	15	13	
December	24	41	



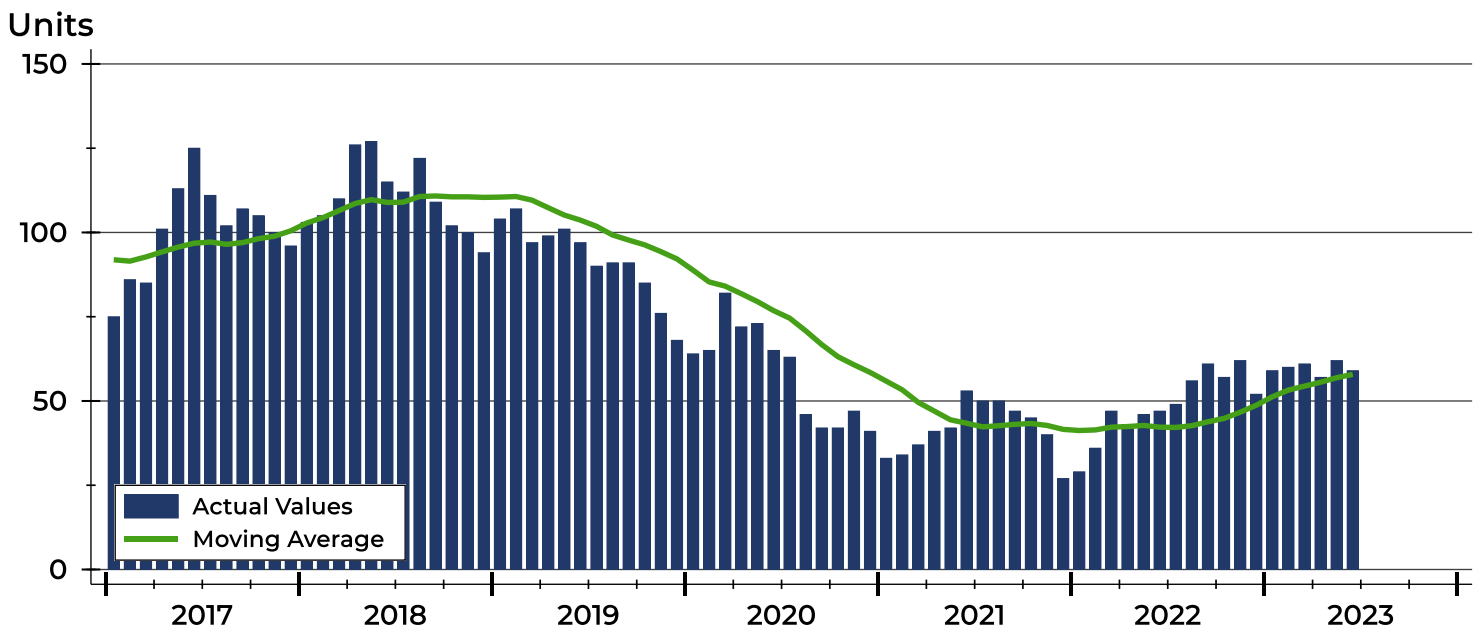
Pottawatomie County Active Listings Analysis

Summary Statistics for Active Listings		2023	End of June 2022	Change
Active Listings		59	47	25.5%
Volume (1,000s)		23,201	17,396	33.4%
Months' Supply		2.4	1.5	60.0%
Average	List Price	393,232	370,121	6.2%
	Days on Market	73	69	5.8%
	Percent of Original	97.4%	98.6%	-1.2%
Median	List Price	344,000	389,900	-11.8%
	Days on Market	61	50	22.0%
	Percent of Original	100.0%	100.0%	0.0%

A total of 59 homes were available for sale in Pottawatomie County at the end of June. This represents a 2.4 months' supply of active listings.

The median list price of homes on the market at the end of June was \$344,000, down 11.8% from 2022. The typical time on market for active listings was 61 days, up from 50 days a year earlier.

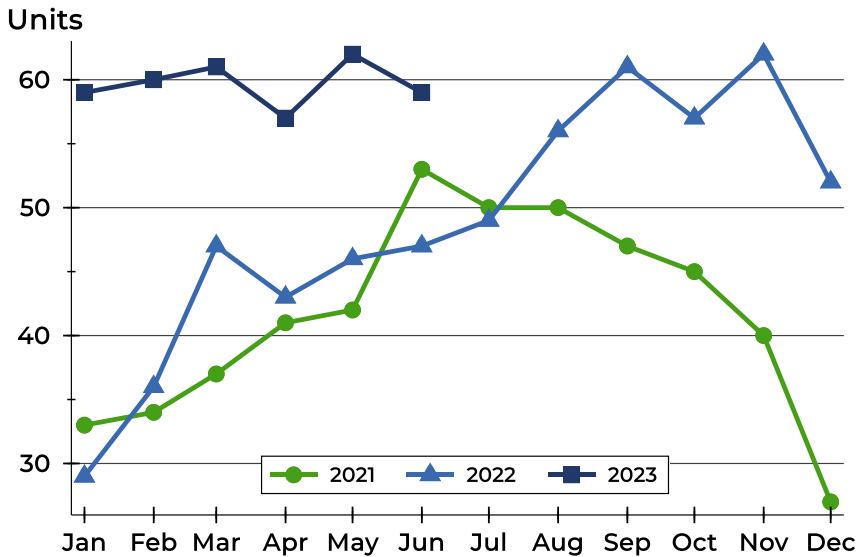
History of Active Listings





Pottawatomie County Active Listings Analysis

Active Listings by Month



Month	2021	2022	2023
January	33	29	59
February	34	36	60
March	37	47	61
April	41	43	57
May	42	46	62
June	53	47	59
July	50	49	
August	50	56	
September	47	61	
October	45	57	
November	40	62	
December	27	52	

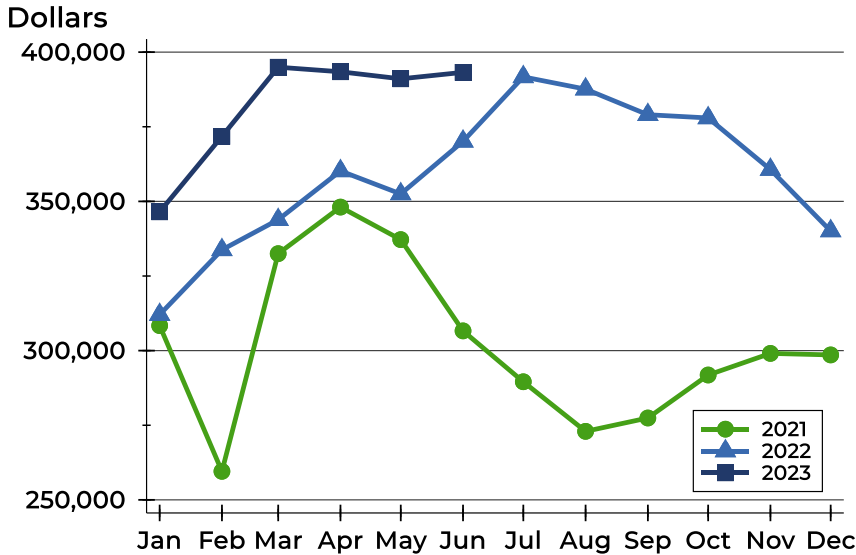
Active Listings by Price Range

Price Range	Active Listings		Months' Supply	List Price		Days on Market		Price as % of Orig.	
	Number	Percent		Average	Median	Avg.	Med.	Avg.	Med.
Below \$25,000	0	0.0%	N/A	N/A	N/A	N/A	N/A	N/A	N/A
\$25,000-\$49,999	0	0.0%	N/A	N/A	N/A	N/A	N/A	N/A	N/A
\$50,000-\$99,999	3	5.1%	6.0	82,833	80,000	39	21	90.6%	100.0%
\$100,000-\$124,999	2	3.4%	N/A	117,450	117,450	35	35	96.2%	96.2%
\$125,000-\$149,999	2	3.4%	N/A	132,450	132,450	37	37	96.7%	96.7%
\$150,000-\$174,999	2	3.4%	1.7	168,900	168,900	83	83	100.0%	100.0%
\$175,000-\$199,999	0	0.0%	N/A	N/A	N/A	N/A	N/A	N/A	N/A
\$200,000-\$249,999	5	8.5%	1.7	220,500	215,000	46	35	99.0%	100.0%
\$250,000-\$299,999	7	11.9%	1.8	275,557	270,000	62	31	98.7%	100.0%
\$300,000-\$399,999	15	25.4%	1.7	347,473	340,000	71	54	97.5%	98.5%
\$400,000-\$499,999	11	18.6%	3.0	435,800	439,900	106	70	95.3%	96.7%
\$500,000-\$749,999	10	16.9%	7.5	612,728	607,000	90	100	99.1%	100.0%
\$750,000-\$999,999	0	0.0%	N/A	N/A	N/A	N/A	N/A	N/A	N/A
\$1,000,000 and up	2	3.4%	N/A	1,475,000	1,475,000	52	52	100.0%	100.0%



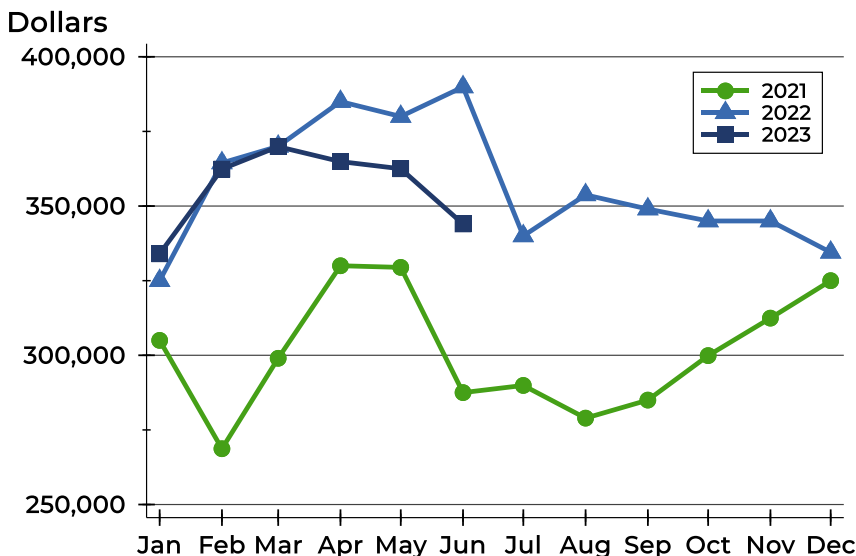
Pottawatomie County Active Listings Analysis

Average Price



Month	2021	2022	2023
January	308,385	312,066	346,498
February	259,565	333,767	371,789
March	332,489	343,857	394,956
April	348,095	360,213	393,429
May	337,200	352,492	391,065
June	306,614	370,121	393,232
July	289,574	391,716	
August	272,958	387,600	
September	277,430	379,030	
October	291,840	377,949	
November	299,078	360,668	
December	298,563	340,103	

Median Price

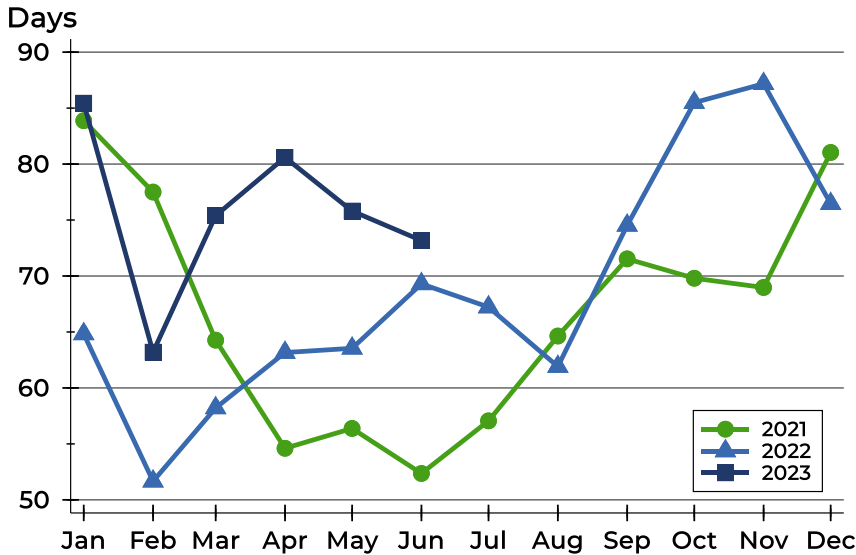


Month	2021	2022	2023
January	305,000	325,000	334,000
February	268,700	364,450	362,400
March	299,000	370,000	369,900
April	330,000	385,000	364,900
May	329,450	380,000	362,500
June	287,500	389,900	344,000
July	289,900	340,000	
August	278,950	353,750	
September	285,000	349,000	
October	299,900	345,000	
November	312,450	345,000	
December	325,000	334,500	



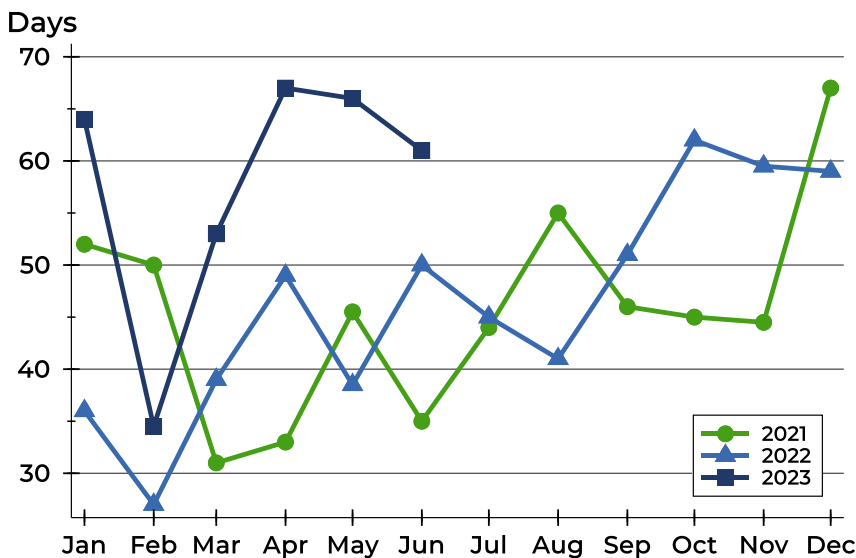
Pottawatomie County Active Listings Analysis

Average DOM



Month	2021	2022	2023
January	84	65	85
February	78	52	63
March	64	58	75
April	55	63	81
May	56	64	76
June	52	69	73
July	57	67	
August	65	62	
September	72	75	
October	70	85	
November	69	87	
December	81	76	

Median DOM

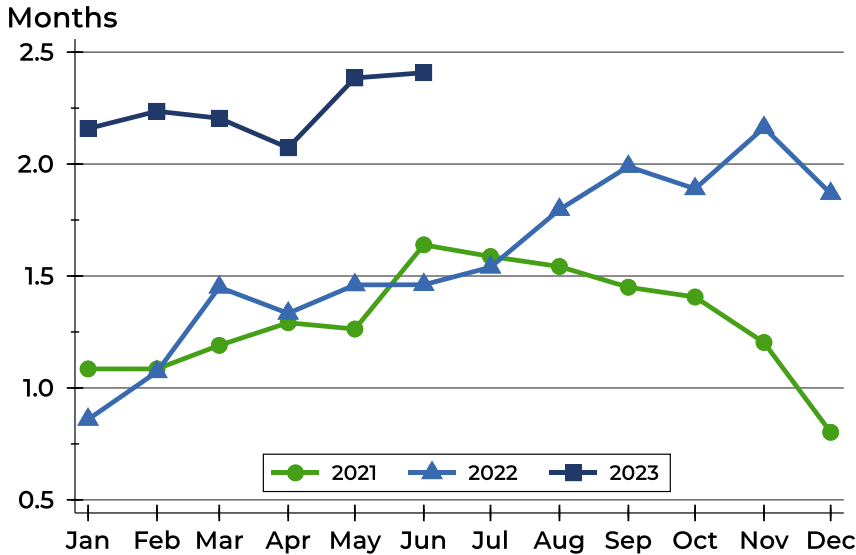


Month	2021	2022	2023
January	52	36	64
February	50	27	35
March	31	39	53
April	33	49	67
May	46	39	66
June	35	50	61
July	44	45	
August	55	41	
September	46	51	
October	45	62	
November	45	60	
December	67	59	



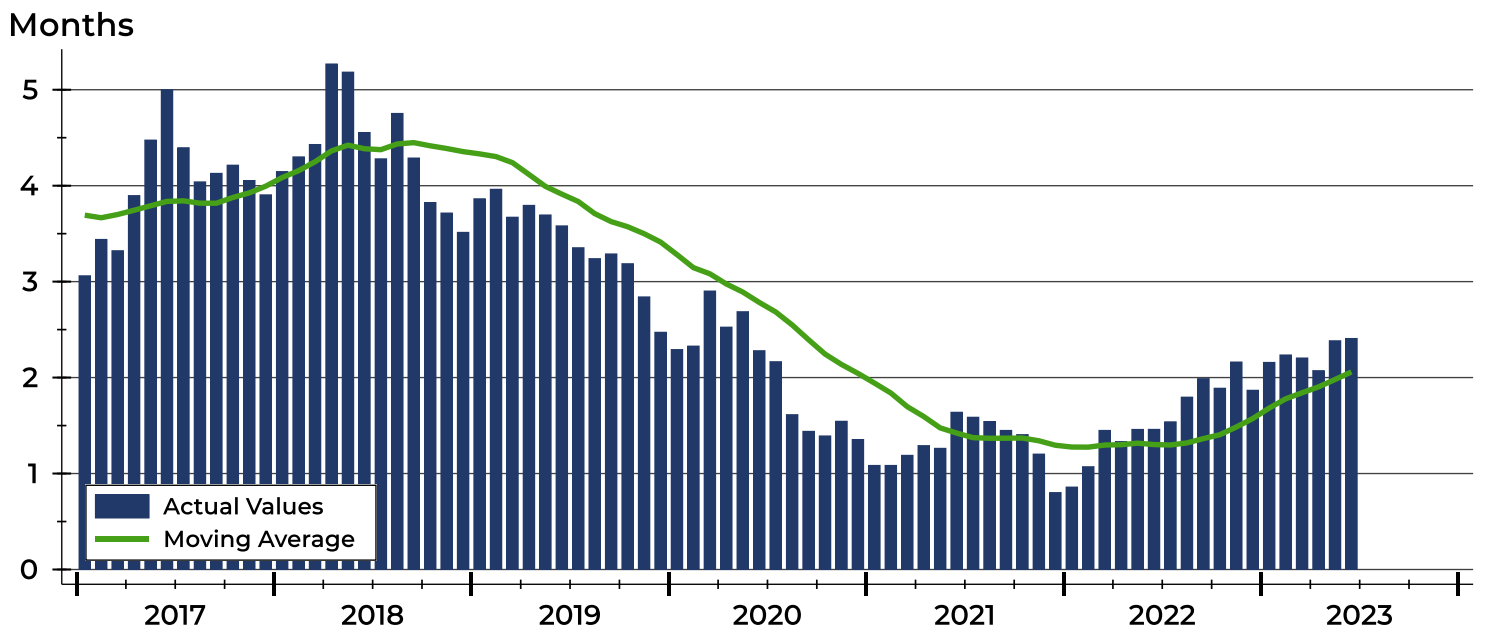
Pottawatomie County Months' Supply Analysis

Months' Supply by Month



Month	2021	2022	2023
January	1.1	0.9	2.2
February	1.1	1.1	2.2
March	1.2	1.4	2.2
April	1.3	1.3	2.1
May	1.3	1.5	2.4
June	1.6	1.5	2.4
July	1.6	1.5	
August	1.5	1.8	
September	1.4	2.0	
October	1.4	1.9	
November	1.2	2.2	
December	0.8	1.9	

History of Month's Supply





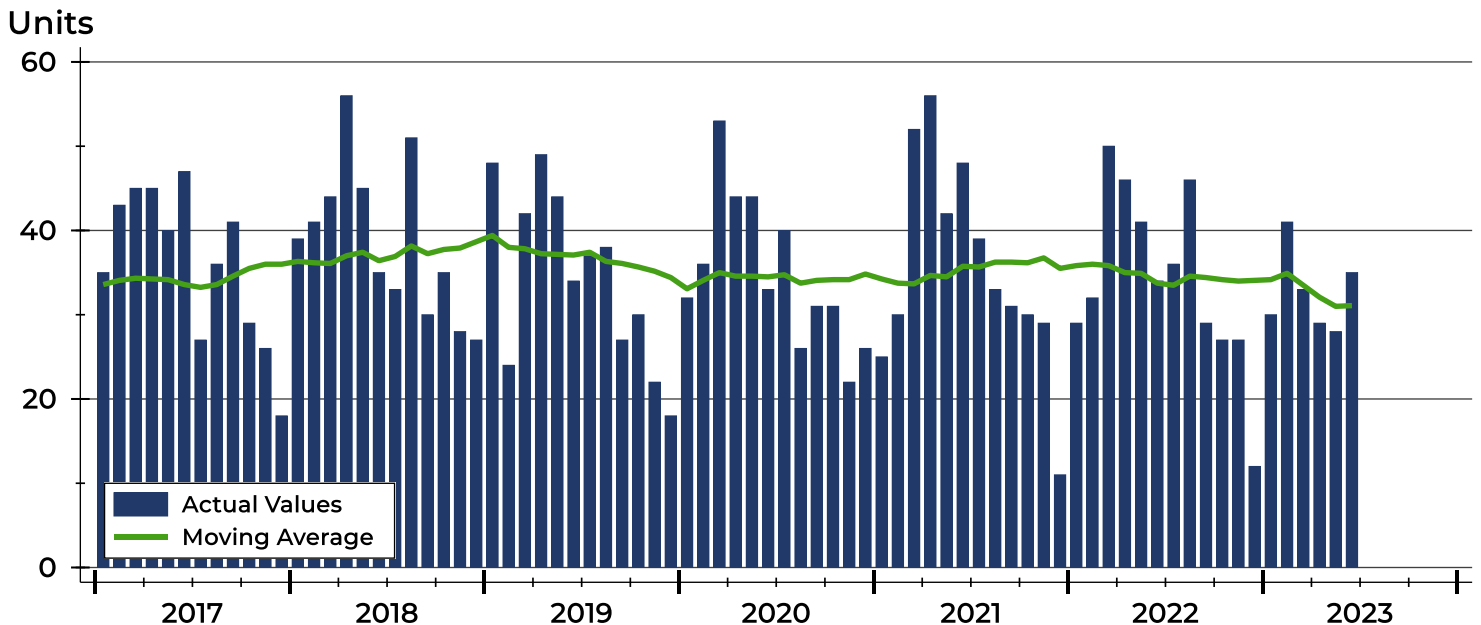
Pottawatomie County New Listings Analysis

Summary Statistics for New Listings		2023	June 2022	Change
Current Month	New Listings	35	34	2.9%
	Volume (1,000s)	11,590	10,647	8.9%
	Average List Price	331,142	313,151	5.7%
	Median List Price	314,900	310,000	1.6%
Year-to-Date	New Listings	196	232	-15.5%
	Volume (1,000s)	69,318	75,680	-8.4%
	Average List Price	353,661	326,206	8.4%
	Median List Price	335,000	329,950	1.5%

A total of 35 new listings were added in Pottawatomie County during June, up 2.9% from the same month in 2022. Year-to-date Pottawatomie County has seen 196 new listings.

The median list price of these homes was \$314,900 up from \$310,000 in 2022.

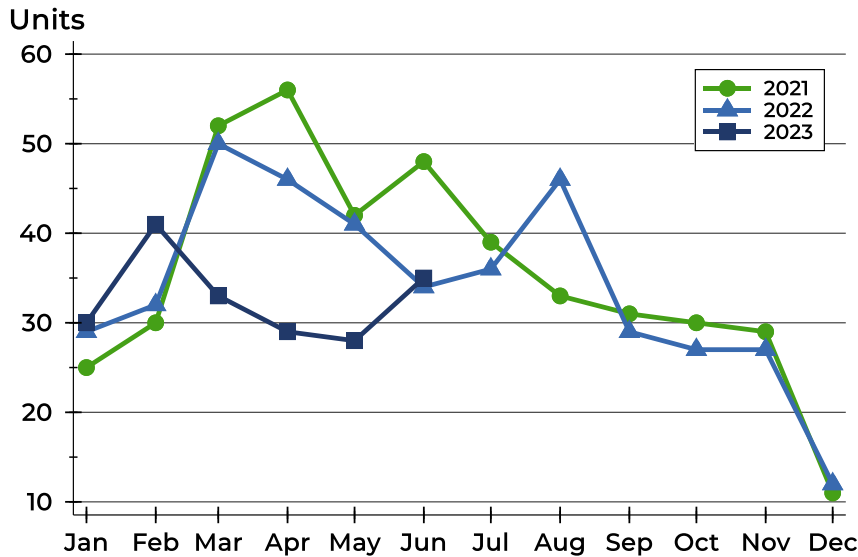
History of New Listings





Pottawatomie County New Listings Analysis

New Listings by Month



Month	2021	2022	2023
January	25	29	30
February	30	32	41
March	52	50	33
April	56	46	29
May	42	41	28
June	48	34	35
July	39	36	
August	33	46	
September	31	29	
October	30	27	
November	29	27	
December	11	12	

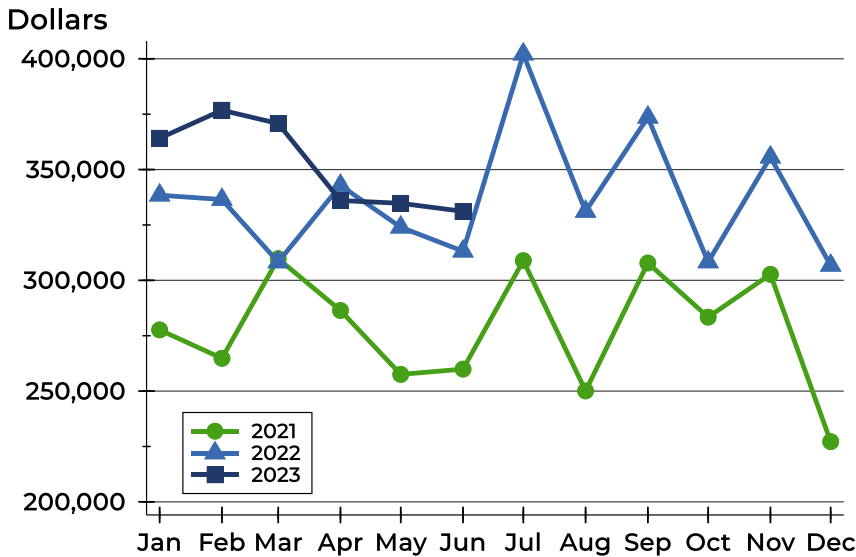
New Listings by Price Range

Price Range	New Listings		List Price		Days on Market		Price as % of Orig.	
	Number	Percent	Average	Median	Avg.	Med.	Avg.	Med.
Below \$25,000	0	0.0%	N/A	N/A	N/A	N/A	N/A	N/A
\$25,000-\$49,999	0	0.0%	N/A	N/A	N/A	N/A	N/A	N/A
\$50,000-\$99,999	2	5.7%	84,750	84,750	20	20	100.0%	100.0%
\$100,000-\$124,999	1	2.9%	115,000	115,000	16	16	100.0%	100.0%
\$125,000-\$149,999	3	8.6%	136,967	136,000	5	6	100.0%	100.0%
\$150,000-\$174,999	0	0.0%	N/A	N/A	N/A	N/A	N/A	N/A
\$175,000-\$199,999	1	2.9%	189,000	189,000	1	1	100.0%	100.0%
\$200,000-\$249,999	3	8.6%	229,967	230,000	5	3	100.0%	100.0%
\$250,000-\$299,999	6	17.1%	273,150	270,000	14	9	98.9%	100.0%
\$300,000-\$399,999	12	34.3%	340,275	335,000	15	13	99.3%	100.0%
\$400,000-\$499,999	4	11.4%	443,750	451,500	17	14	98.9%	99.4%
\$500,000-\$749,999	2	5.7%	634,238	634,238	13	13	100.0%	100.0%
\$750,000-\$999,999	0	0.0%	N/A	N/A	N/A	N/A	N/A	N/A
\$1,000,000 and up	1	2.9%	1,250,000	1,250,000	16	16	100.0%	100.0%



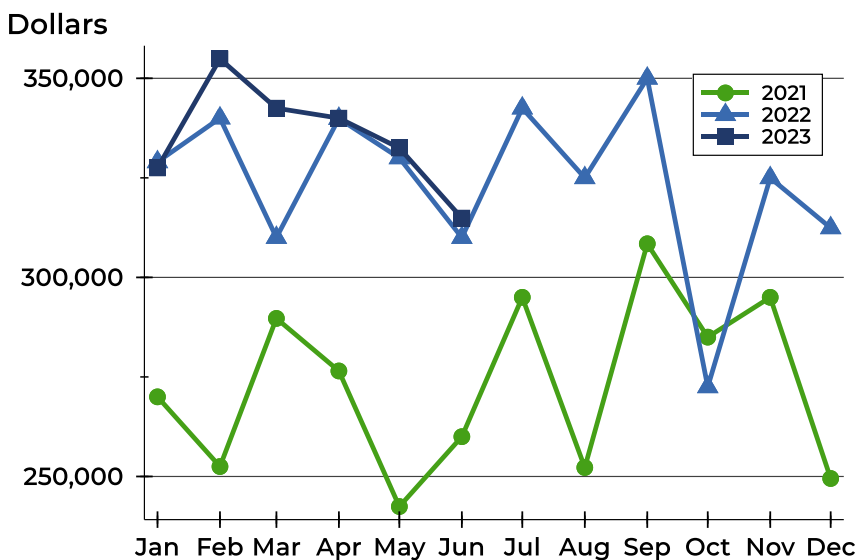
Pottawatomie County New Listings Analysis

Average Price



Month	2021	2022	2023
January	277,640	338,438	364,150
February	264,803	336,485	376,805
March	309,779	308,271	370,785
April	286,386	342,847	336,028
May	257,544	323,966	334,764
June	259,931	313,151	331,142
July	308,895	402,103	
August	250,072	331,116	
September	307,825	373,607	
October	283,383	308,297	
November	302,724	355,596	
December	227,186	306,771	

Median Price



Month	2021	2022	2023
January	270,000	329,000	327,500
February	252,500	340,000	354,900
March	289,700	310,000	342,500
April	276,500	339,900	340,000
May	242,450	330,000	332,500
June	260,000	310,000	314,900
July	295,000	342,500	
August	252,250	325,000	
September	308,450	350,000	
October	285,000	272,500	
November	295,000	325,000	
December	249,500	312,425	

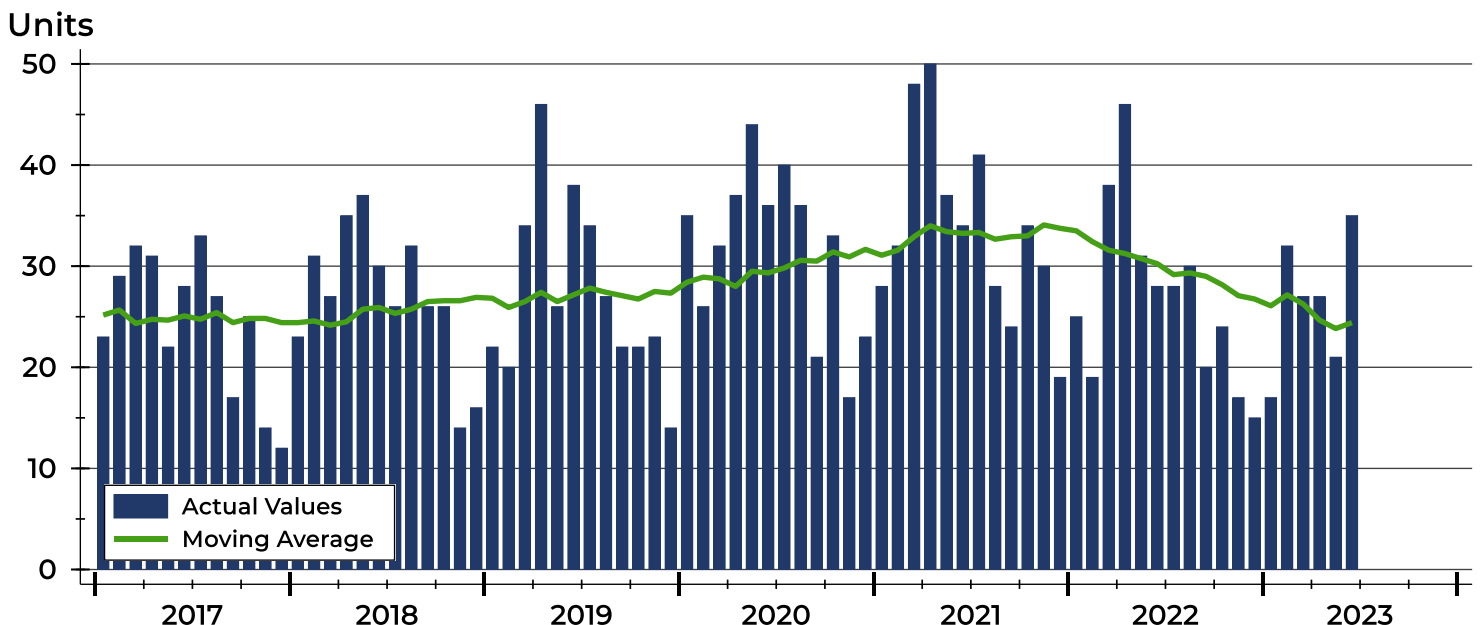


Pottawatomie County Contracts Written Analysis

Summary Statistics for Contracts Written		2023	June 2022	Change	2023	Year-to-Date 2022	Change
Contracts Written		35	28	25.0%	159	187	-15.0%
Volume (1,000s)		11,186	7,848	42.5%	51,447	58,057	-11.4%
Average	Sale Price	319,598	280,298	14.0%	323,565	310,466	4.2%
	Days on Market	33	18	83.3%	46	22	109.1%
	Percent of Original	99.0%	99.5%	-0.5%	98.5%	100.8%	-2.3%
Median	Sale Price	329,000	284,950	15.5%	330,000	310,000	6.5%
	Days on Market	12	8	50.0%	14	6	133.3%
	Percent of Original	100.0%	100.0%	0.0%	100.0%	100.0%	0.0%

A total of 35 contracts for sale were written in Pottawatomie County during the month of June, up from 28 in 2022. The median list price of these homes was \$329,000, up from \$284,950 the prior year. Half of the homes that went under contract in June were on the market less than 12 days, compared to 8 days in June 2022.

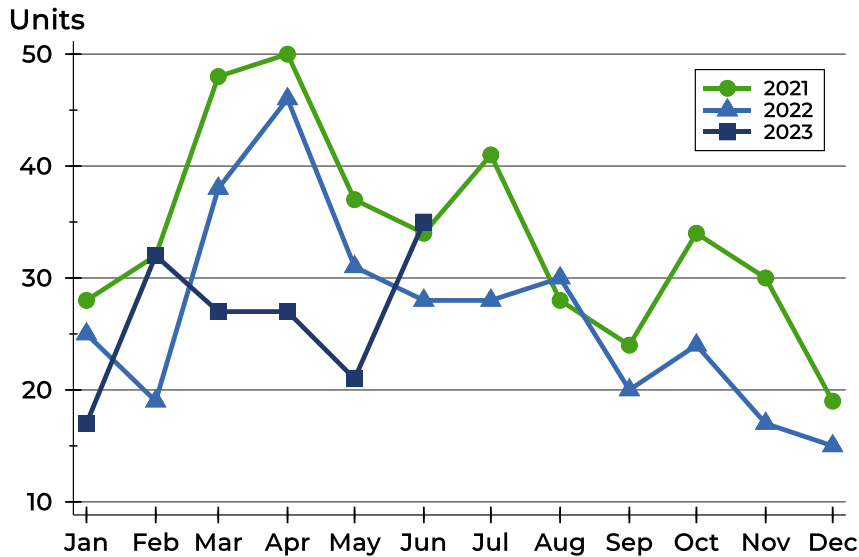
History of Contracts Written





Pottawatomie County Contracts Written Analysis

Contracts Written by Month



Month	2021	2022	2023
January	28	25	17
February	32	19	32
March	48	38	27
April	50	46	27
May	37	31	21
June	34	28	35
July	41	28	
August	28	30	
September	24	20	
October	34	24	
November	30	17	
December	19	15	

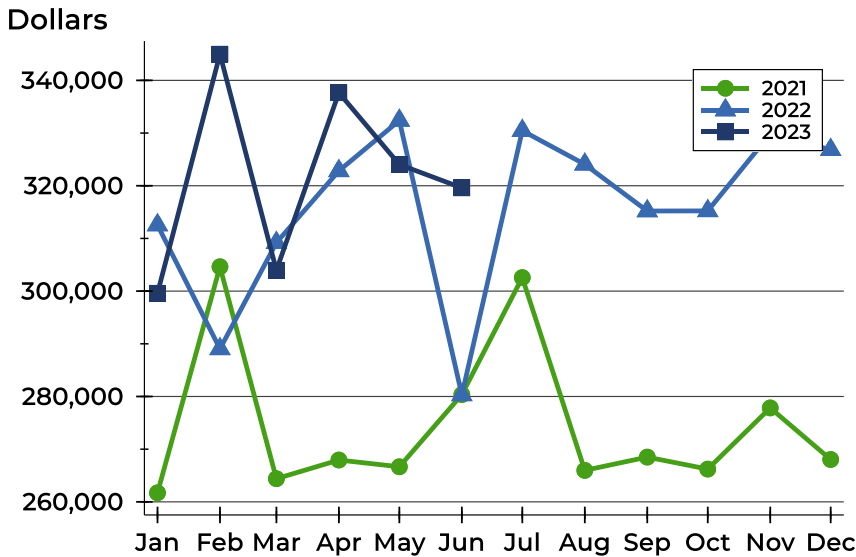
Contracts Written by Price Range

Price Range	Contracts Written		List Price		Days on Market		Price as % of Orig.	
	Number	Percent	Average	Median	Avg.	Med.	Avg.	Med.
Below \$25,000	0	0.0%	N/A	N/A	N/A	N/A	N/A	N/A
\$25,000-\$49,999	0	0.0%	N/A	N/A	N/A	N/A	N/A	N/A
\$50,000-\$99,999	1	2.9%	98,000	98,000	81	81	100.0%	100.0%
\$100,000-\$124,999	0	0.0%	N/A	N/A	N/A	N/A	N/A	N/A
\$125,000-\$149,999	3	8.6%	136,967	136,000	5	6	100.0%	100.0%
\$150,000-\$174,999	0	0.0%	N/A	N/A	N/A	N/A	N/A	N/A
\$175,000-\$199,999	2	5.7%	187,200	187,200	33	33	95.3%	95.3%
\$200,000-\$249,999	5	14.3%	220,680	209,000	15	13	100.0%	100.0%
\$250,000-\$299,999	3	8.6%	274,967	275,000	5	5	100.0%	100.0%
\$300,000-\$399,999	16	45.7%	345,513	335,000	39	15	98.8%	100.0%
\$400,000-\$499,999	2	5.7%	451,500	451,500	2	2	100.0%	100.0%
\$500,000-\$749,999	3	8.6%	647,708	615,000	94	101	98.0%	98.0%
\$750,000-\$999,999	0	0.0%	N/A	N/A	N/A	N/A	N/A	N/A
\$1,000,000 and up	0	0.0%	N/A	N/A	N/A	N/A	N/A	N/A



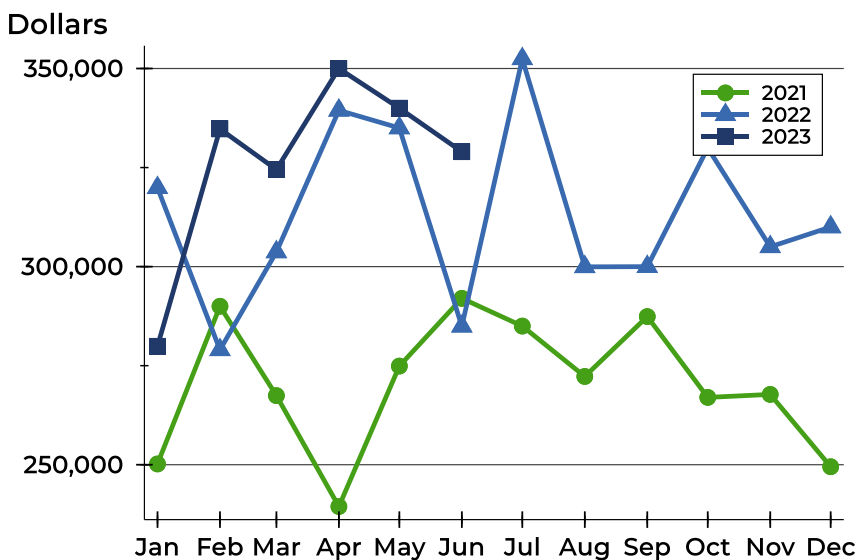
Pottawatomie County Contracts Written Analysis

Average Price



Month	2021	2022	2023
January	261,718	312,546	299,594
February	304,628	289,037	344,978
March	264,400	309,196	303,959
April	267,945	322,826	337,663
May	266,667	332,385	324,033
June	280,366	280,298	319,598
July	302,572	330,457	
August	265,977	324,068	
September	268,499	315,205	
October	266,221	315,234	
November	277,837	329,815	
December	268,045	326,840	

Median Price

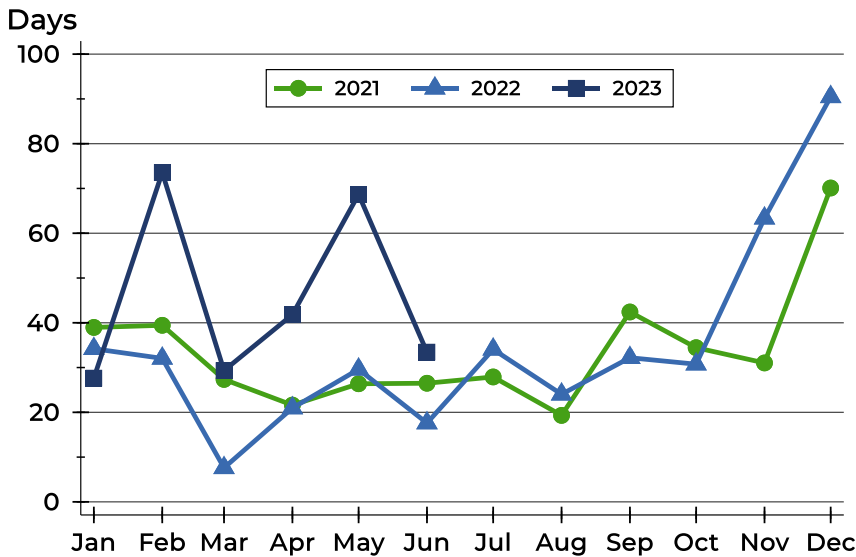


Month	2021	2022	2023
January	250,200	319,900	279,900
February	290,000	279,000	334,750
March	267,450	303,700	324,500
April	239,450	339,450	350,000
May	274,900	335,000	340,000
June	292,000	284,950	329,000
July	285,000	352,450	
August	272,280	299,950	
September	287,400	300,000	
October	267,000	329,950	
November	267,750	305,000	
December	249,500	310,000	



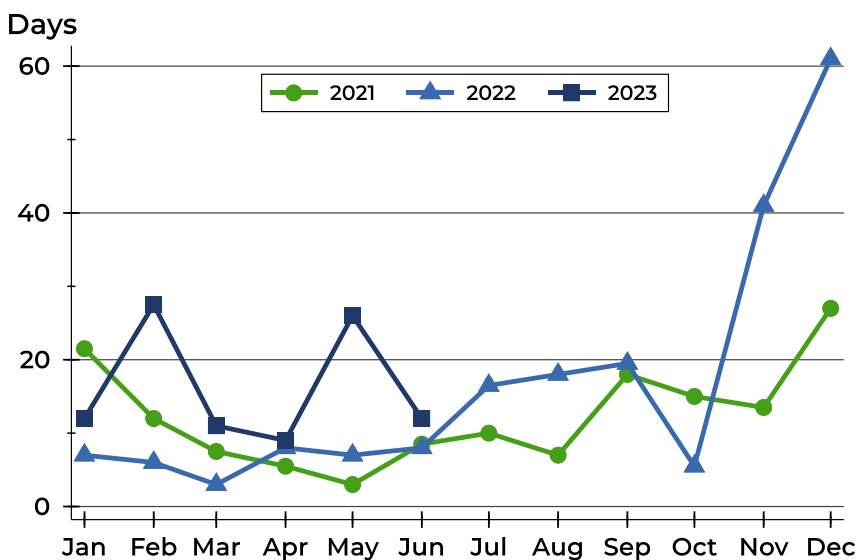
Pottawatomie County Contracts Written Analysis

Average DOM



Month	2021	2022	2023
January	39	34	28
February	39	32	74
March	27	8	29
April	22	21	42
May	26	30	69
June	27	18	33
July	28	34	
August	19	24	
September	42	32	
October	34	31	
November	31	63	
December	70	90	

Median DOM



Month	2021	2022	2023
January	22	7	12
February	12	6	28
March	8	3	11
April	6	8	9
May	3	7	26
June	9	8	12
July	10	17	
August	7	18	
September	18	20	
October	15	6	
November	14	41	
December	27	61	



Pottawatomie County Pending Contracts Analysis

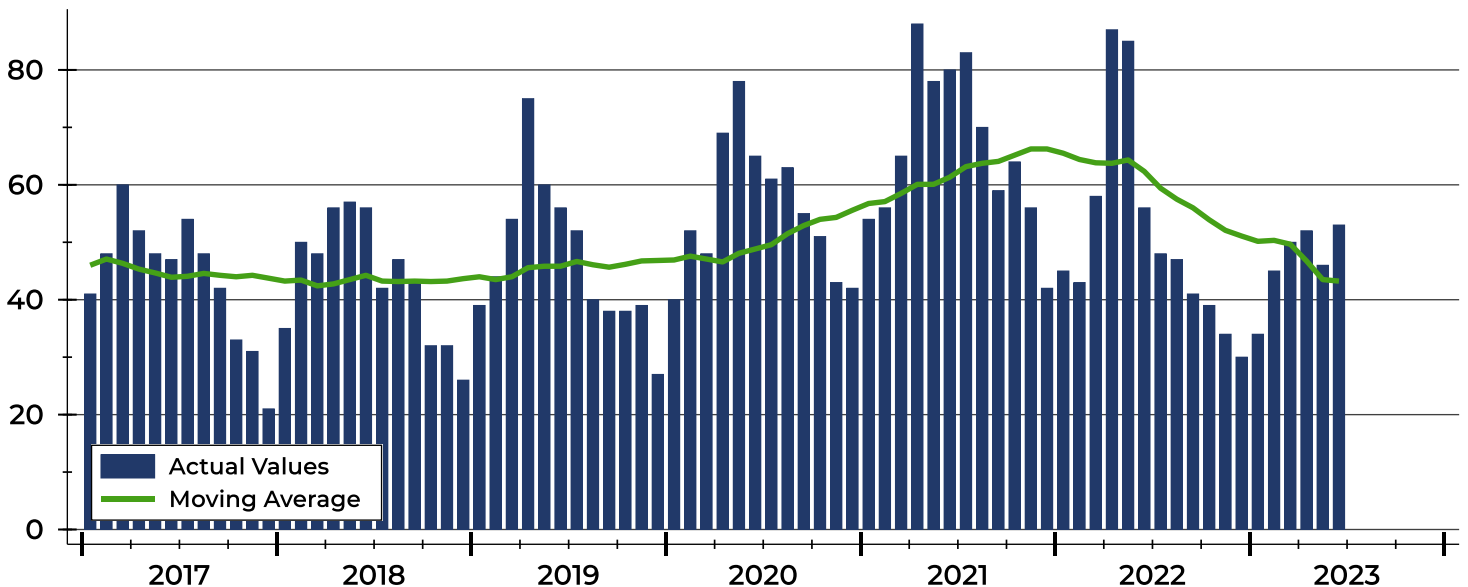
Summary Statistics for Pending Contracts		2023	End of June 2022	Change
Pending Contracts		53	56	-5.4%
Volume (1,000s)		17,032	17,683	-3.7%
Average	List Price	321,353	315,771	1.8%
	Days on Market	40	23	73.9%
	Percent of Original	99.7%	100.0%	-0.3%
Median	List Price	319,000	302,450	5.5%
	Days on Market	10	7	42.9%
	Percent of Original	100.0%	100.0%	0.0%

A total of 53 listings in Pottawatomie County had contracts pending at the end of June, down from 56 contracts pending at the end of June 2022.

Pending contracts reflect listings with a contract in place at the end of the month. In contrast, contracts written measures the number of listings put under contract during the month.

History of Pending Contracts

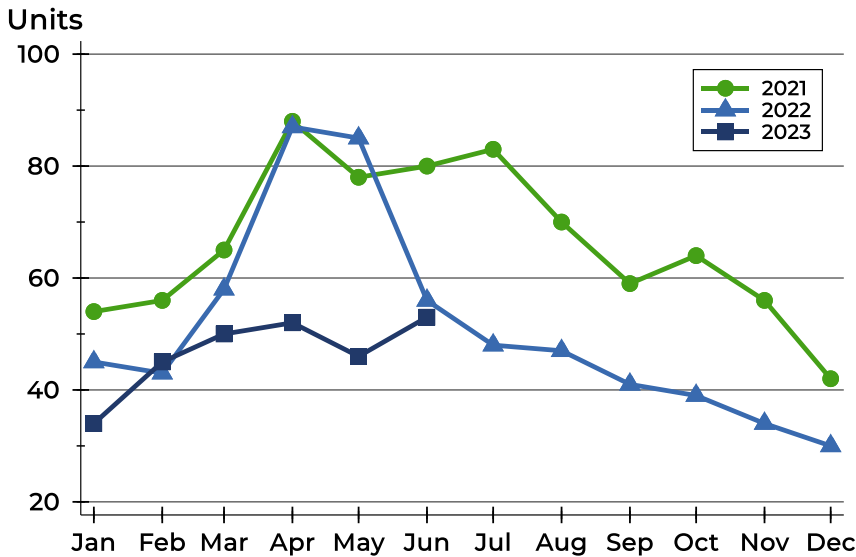
Units





Pottawatomie County Pending Contracts Analysis

Pending Contracts by Month



Month	2021	2022	2023
January	54	45	34
February	56	43	45
March	65	58	50
April	88	87	52
May	78	85	46
June	80	56	53
July	83	48	
August	70	47	
September	59	41	
October	64	39	
November	56	34	
December	42	30	

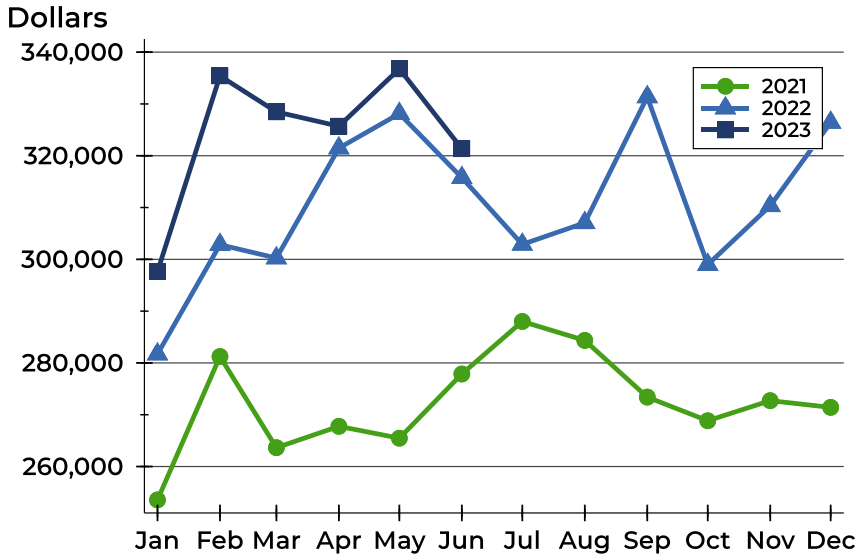
Pending Contracts by Price Range

Price Range	Pending Contracts		List Price		Days on Market		Price as % of Orig.	
	Number	Percent	Average	Median	Avg.	Med.	Avg.	Med.
Below \$25,000	0	0.0%	N/A	N/A	N/A	N/A	N/A	N/A
\$25,000-\$49,999	0	0.0%	N/A	N/A	N/A	N/A	N/A	N/A
\$50,000-\$99,999	1	1.9%	98,000	98,000	81	81	100.0%	100.0%
\$100,000-\$124,999	0	0.0%	N/A	N/A	N/A	N/A	N/A	N/A
\$125,000-\$149,999	3	5.7%	136,967	136,000	5	6	100.0%	100.0%
\$150,000-\$174,999	1	1.9%	155,000	155,000	3	3	100.0%	100.0%
\$175,000-\$199,999	2	3.8%	187,200	187,200	33	33	95.3%	95.3%
\$200,000-\$249,999	8	15.1%	227,838	234,700	19	19	100.0%	100.0%
\$250,000-\$299,999	9	17.0%	275,522	275,000	24	3	103.3%	100.0%
\$300,000-\$399,999	22	41.5%	350,041	342,500	59	17	98.6%	100.0%
\$400,000-\$499,999	2	3.8%	451,500	451,500	2	2	100.0%	100.0%
\$500,000-\$749,999	5	9.4%	617,425	615,000	58	44	98.8%	98.5%
\$750,000-\$999,999	0	0.0%	N/A	N/A	N/A	N/A	N/A	N/A
\$1,000,000 and up	0	0.0%	N/A	N/A	N/A	N/A	N/A	N/A



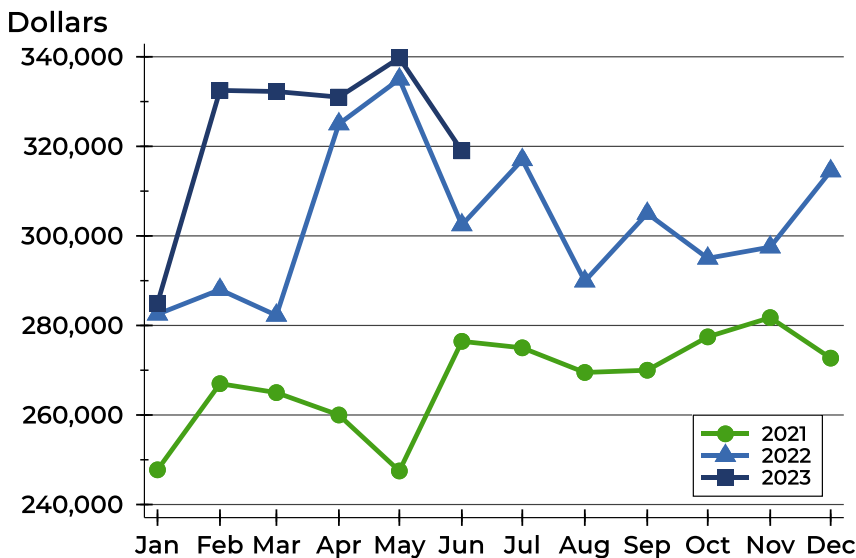
Pottawatomie County Pending Contracts Analysis

Average Price



Month	2021	2022	2023
January	253,565	281,700	297,634
February	281,241	302,832	335,418
March	263,641	300,248	328,472
April	267,766	321,471	325,708
May	265,473	328,125	336,778
June	277,862	315,771	321,353
July	288,006	302,886	
August	284,350	307,048	
September	273,403	331,346	
October	268,839	298,977	
November	272,718	310,334	
December	271,423	326,423	

Median Price

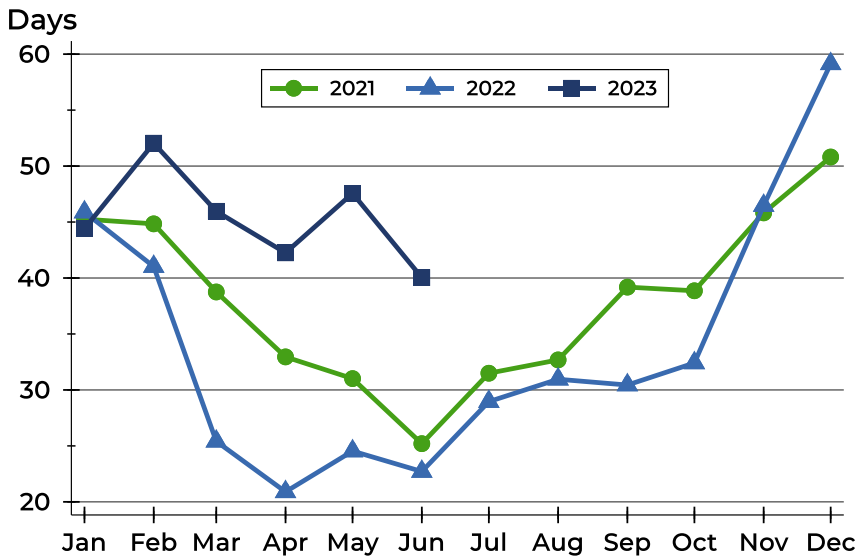


Month	2021	2022	2023
January	247,750	282,500	284,950
February	267,000	288,000	332,500
March	265,000	282,250	332,250
April	260,000	325,000	331,000
May	247,500	335,000	339,750
June	276,450	302,450	319,000
July	275,000	317,000	
August	269,500	289,900	
September	270,000	305,000	
October	277,450	295,000	
November	281,750	297,500	
December	272,700	314,500	



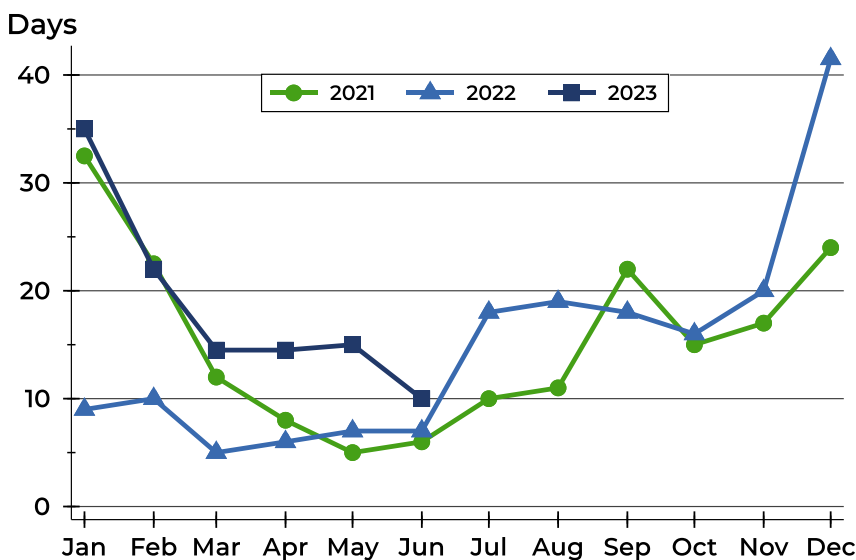
Pottawatomie County Pending Contracts Analysis

Average DOM



Month	2021	2022	2023
January	45	46	44
February	45	41	52
March	39	25	46
April	33	21	42
May	31	25	48
June	25	23	40
July	31	29	
August	33	31	
September	39	30	
October	39	32	
November	46	46	
December	51	59	

Median DOM



Month	2021	2022	2023
January	33	9	35
February	23	10	22
March	12	5	15
April	8	6	15
May	5	7	15
June	6	7	10
July	10	18	
August	11	19	
September	22	18	
October	15	16	
November	17	20	
December	24	42	