



**November
2025**

Flint Hills MLS Statistics



**FLINT HILLS
ASSOCIATION
OF REALTORS®**

Pottawatomie County Housing Report



Market Overview

Pottawatomie County Home Sales Rose in November

Total home sales in Pottawatomie County rose by 5.0% last month to 21 units, compared to 20 units in November 2024. Total sales volume was \$7.3 million, up 4.5% from a year earlier.

The median sale price in November was \$329,500, down from \$358,500 a year earlier. Homes that sold in November were typically on the market for 29 days and sold for 100.0% of their list prices.

Pottawatomie County Active Listings Up at End of November

The total number of active listings in Pottawatomie County at the end of November was 46 units, up from 44 at the same point in 2024. This represents a 2.0 months' supply of homes available for sale. The median list price of homes on the market at the end of November was \$362,500.

During November, a total of 17 contracts were written up from 16 in November 2024. At the end of the month, there were 23 contracts still pending.

Report Contents

- Summary Statistics – Page 2
- Closed Listing Analysis – Page 3
- Active Listings Analysis – Page 7
- Months' Supply Analysis – Page 11
- New Listings Analysis – Page 12
- Contracts Written Analysis – Page 15
- Pending Contracts Analysis – Page 19

Contact Information

Margaret Pendleton, Association Executive
Flint Hills Association of REALTORS®
205 S. Seth Child Road
Manhattan, KS 66502
785-776-1203
ae@flinthillsrealtors.net
www.flinthillsrealtors.net



**November
2025**

Flint Hills MLS Statistics



**FLINT HILLS
ASSOCIATION
OF REALTORS®**

Pottawatomie County Summary Statistics

November MLS Statistics Three-year History		Current Month			Year-to-Date		
		2025	2024	2023	2025	2024	2023
Home Sales Change from prior year		21 5.0%	20 -9.1%	22 4.8%	254 -4.5%	266 -3.3%	275 -12.7%
Active Listings Change from prior year		46 4.5%	44 2.3%	43 -21.8%	N/A	N/A	N/A
Months' Supply Change from prior year		2.0 5.3%	1.9 11.8%	1.7 -10.5%	N/A	N/A	N/A
New Listings Change from prior year		23 4.5%	22 -18.5%	27 0.0%	335 -3.7%	348 1.5%	343 -13.8%
Contracts Written Change from prior year		17 6.3%	16 14.3%	14 -17.6%	258 -4.1%	269 -2.5%	276 -10.1%
Pending Contracts Change from prior year		23 -8.0%	25 13.6%	22 -24.1%	N/A	N/A	N/A
Sales Volume (1,000s) Change from prior year		7,313 4.5%	6,998 -10.0%	7,777 18.8%	89,211 -0.1%	89,278 1.8%	87,725 -10.3%
Average	Sale Price Change from prior year	348,233 -0.5%	349,902 -1.0%	353,491 13.4%	351,225 4.6%	335,632 5.2%	319,000 2.7%
	List Price of Actives Change from prior year	386,098 -1.8%	393,149 -2.0%	401,074 6.5%	N/A	N/A	N/A
	Days on Market Change from prior year	37 12.1%	33 -2.9%	34 -5.6%	34 -20.9%	43 -2.3%	44 76.0%
	Percent of List Change from prior year	98.6% 0.8%	97.8% 0.8%	97.0% -1.7%	99.2% 0.7%	98.5% -0.3%	98.8% -1.3%
	Percent of Original Change from prior year	97.1% 1.0%	96.1% 0.5%	95.6% -1.6%	98.2% 1.2%	97.0% 0.1%	96.9% -2.6%
Median	Sale Price Change from prior year	329,500 -8.1%	358,500 4.7%	342,450 10.5%	339,950 4.6%	324,950 0.0%	324,900 4.8%
	List Price of Actives Change from prior year	362,500 12.4%	322,400 -9.2%	354,900 -6.6%	N/A	N/A	N/A
	Days on Market Change from prior year	29 45.0%	20 17.6%	17 30.8%	19 -17.4%	23 35.3%	17 112.5%
	Percent of List Change from prior year	100.0% 0.3%	99.7% 0.8%	98.9% -1.1%	100.0% 0.2%	99.8% -0.2%	100.0% 0.0%
	Percent of Original Change from prior year	98.3% -0.5%	98.8% 0.7%	98.1% -1.9%	98.8% 0.5%	98.3% -0.6%	98.9% -1.1%

Note: Year-to-date statistics cannot be calculated for Active Listings, Months' Supply and Pending Contracts.



**November
2025**

Flint Hills MLS Statistics



**FLINT HILLS
ASSOCIATION
OF REALTORS®**

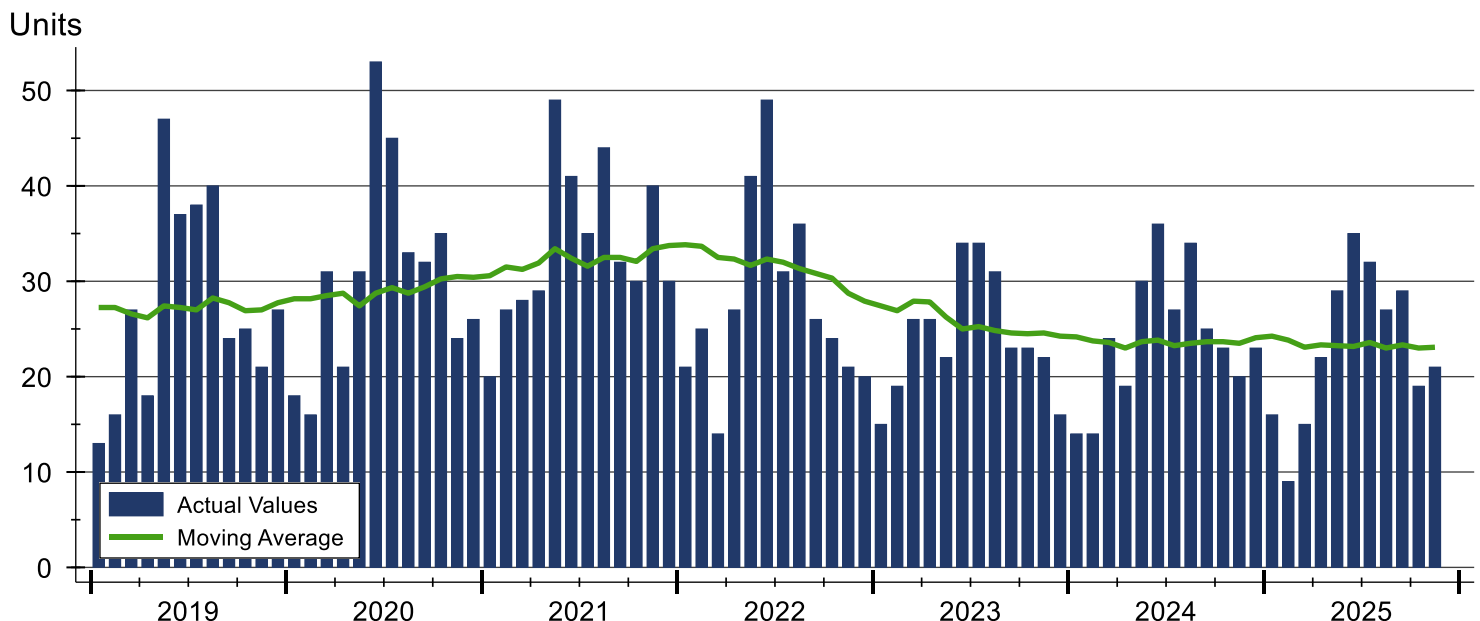
Pottawatomie County Closed Listings Analysis

Summary Statistics for Closed Listings		2025	November 2024	Change	2025	Year-to-Date 2024	Change
Closed Listings		21	20	5.0%	254	266	-4.5%
Volume (1,000s)		7,313	6,998	4.5%	89,211	89,278	-0.1%
Months' Supply		2.0	1.9	5.3%	N/A	N/A	N/A
Average	Sale Price	348,233	349,902	-0.5%	351,225	335,632	4.6%
	Days on Market	37	33	12.1%	34	43	-20.9%
	Percent of List	98.6%	97.8%	0.8%	99.2%	98.5%	0.7%
	Percent of Original	97.1%	96.1%	1.0%	98.2%	97.0%	1.2%
Median	Sale Price	329,500	358,500	-8.1%	339,950	324,950	4.6%
	Days on Market	29	20	45.0%	19	23	-17.4%
	Percent of List	100.0%	99.7%	0.3%	100.0%	99.8%	0.2%
	Percent of Original	98.3%	98.8%	-0.5%	98.8%	98.3%	0.5%

A total of 21 homes sold in Pottawatomie County in November, up from 20 units in November 2024. Total sales volume rose to \$7.3 million compared to \$7.0 million in the previous year.

The median sales price in November was \$329,500, down 8.1% compared to the prior year. Median days on market was 29 days, down from 36 days in October, but up from 20 in November 2024.

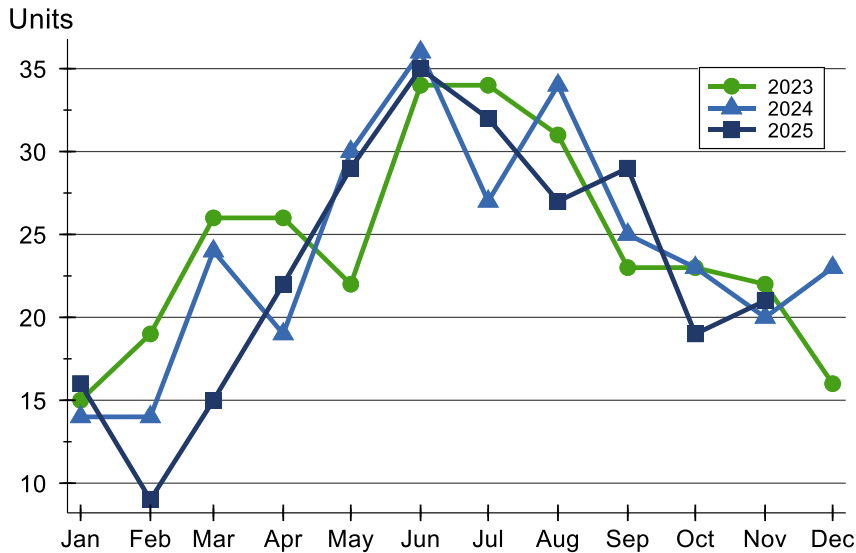
History of Closed Listings





Pottawatomie County Closed Listings Analysis

Closed Listings by Month



Month	2023	2024	2025
January	15	14	16
February	19	14	9
March	26	24	15
April	26	19	22
May	22	30	29
June	34	36	35
July	34	27	32
August	31	34	27
September	23	25	29
October	23	23	19
November	22	20	21
December	16	23	

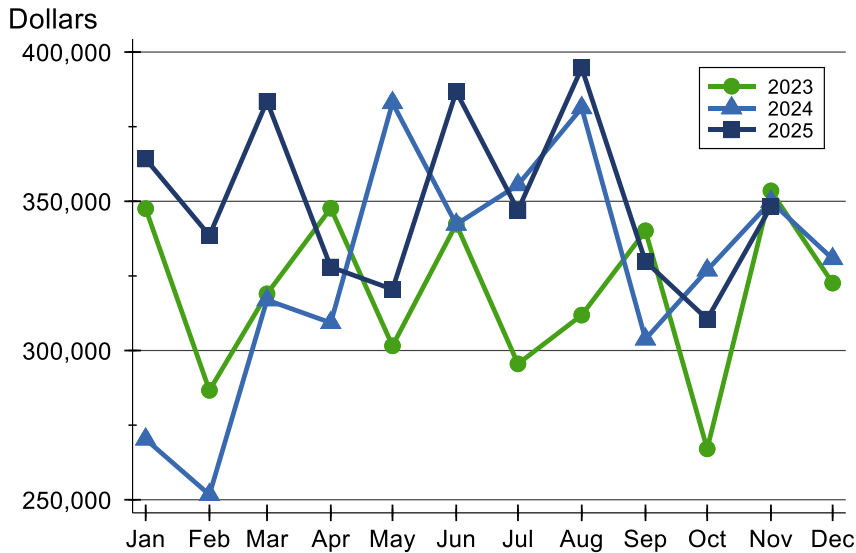
Closed Listings by Price Range

Price Range	Sales Number	Percent	Months' Supply	Sale Price Average	Median	Days on Market Avg.	Med.	Price as % of List Avg.	Med.	Price as % of Orig. Avg.	Med.
Below \$25,000	0	0.0%	N/A	N/A	N/A	N/A	N/A	N/A	N/A	N/A	N/A
\$25,000-\$49,999	0	0.0%	N/A	N/A	N/A	N/A	N/A	N/A	N/A	N/A	N/A
\$50,000-\$99,999	0	0.0%	N/A	N/A	N/A	N/A	N/A	N/A	N/A	N/A	N/A
\$100,000-\$124,999	0	0.0%	N/A	N/A	N/A	N/A	N/A	N/A	N/A	N/A	N/A
\$125,000-\$149,999	0	0.0%	N/A	N/A	N/A	N/A	N/A	N/A	N/A	N/A	N/A
\$150,000-\$174,999	1	4.8%	1.3	170,000	170,000	61	61	97.7%	97.7%	88.5%	88.5%
\$175,000-\$199,999	1	4.8%	2.0	180,000	180,000	1	1	100.6%	100.6%	100.6%	100.6%
\$200,000-\$249,999	2	9.5%	1.7	242,250	242,250	35	35	100.0%	100.0%	96.0%	96.0%
\$250,000-\$299,999	3	14.3%	1.4	275,000	285,000	19	7	99.2%	98.3%	98.5%	98.3%
\$300,000-\$399,999	10	47.6%	1.5	338,040	337,200	49	49	97.6%	99.4%	96.6%	98.5%
\$400,000-\$499,999	2	9.5%	2.2	434,000	434,000	5	5	99.9%	99.9%	99.9%	99.9%
\$500,000-\$749,999	2	9.5%	5.7	702,500	702,500	49	49	99.3%	99.3%	97.7%	97.7%
\$750,000-\$999,999	0	0.0%	N/A	N/A	N/A	N/A	N/A	N/A	N/A	N/A	N/A
\$1,000,000 and up	0	0.0%	N/A	N/A	N/A	N/A	N/A	N/A	N/A	N/A	N/A



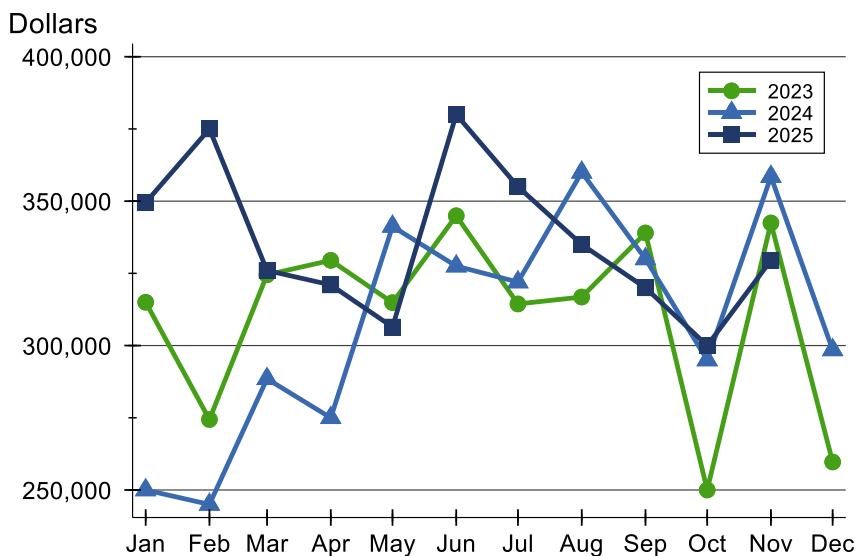
Pottawatomie County Closed Listings Analysis

Average Price



Month	2023	2024	2025
January	347,548	270,281	364,181
February	286,647	251,689	338,544
March	319,004	316,938	383,500
April	347,669	309,311	327,993
May	301,576	383,004	320,503
June	342,338	342,261	386,738
July	295,535	355,507	346,994
August	311,874	381,306	394,678
September	340,115	303,804	329,855
October	267,050	326,926	310,514
November	353,491	349,902	348,233
December	322,588	330,731	

Median Price

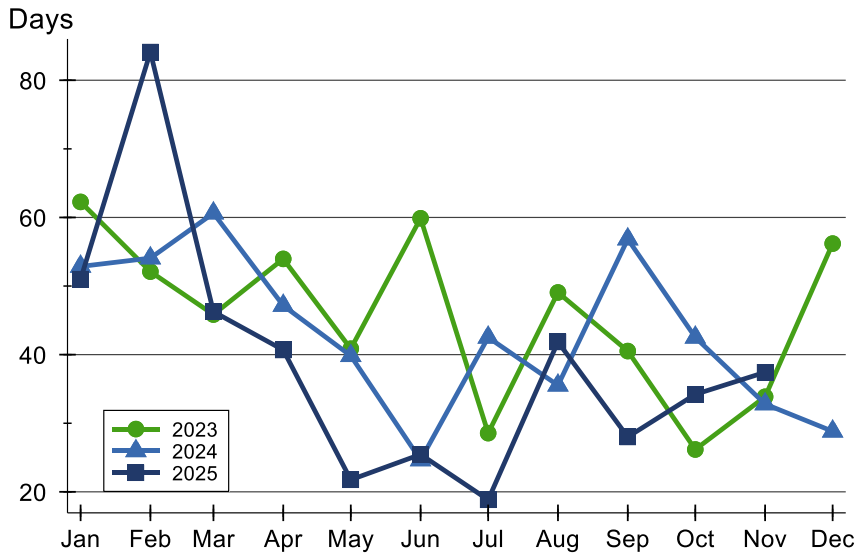


Month	2023	2024	2025
January	315,000	250,000	349,500
February	274,400	245,000	375,000
March	324,500	288,500	326,000
April	329,500	275,000	321,000
May	314,875	341,250	306,425
June	344,950	327,500	380,000
July	314,413	322,000	355,000
August	316,806	359,975	335,000
September	339,000	330,000	320,000
October	250,000	295,000	300,000
November	342,450	358,500	329,500
December	259,703	298,500	



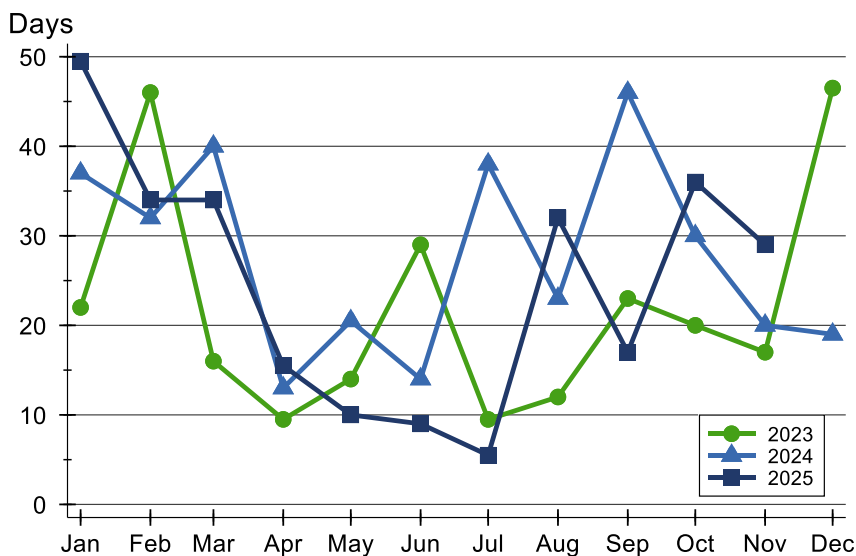
Pottawatomie County Closed Listings Analysis

Average DOM



Month	2023	2024	2025
January	62	53	51
February	52	54	84
March	46	61	46
April	54	47	41
May	41	40	22
June	60	25	25
July	29	43	19
August	49	36	42
September	41	57	28
October	26	43	34
November	34	33	37
December	56	29	

Median DOM



Month	2023	2024	2025
January	22	37	50
February	46	32	34
March	16	40	34
April	10	13	16
May	14	21	10
June	29	14	9
July	10	38	6
August	12	23	32
September	23	46	17
October	20	30	36
November	17	20	29
December	47	19	



**November
2025**

Flint Hills MLS Statistics



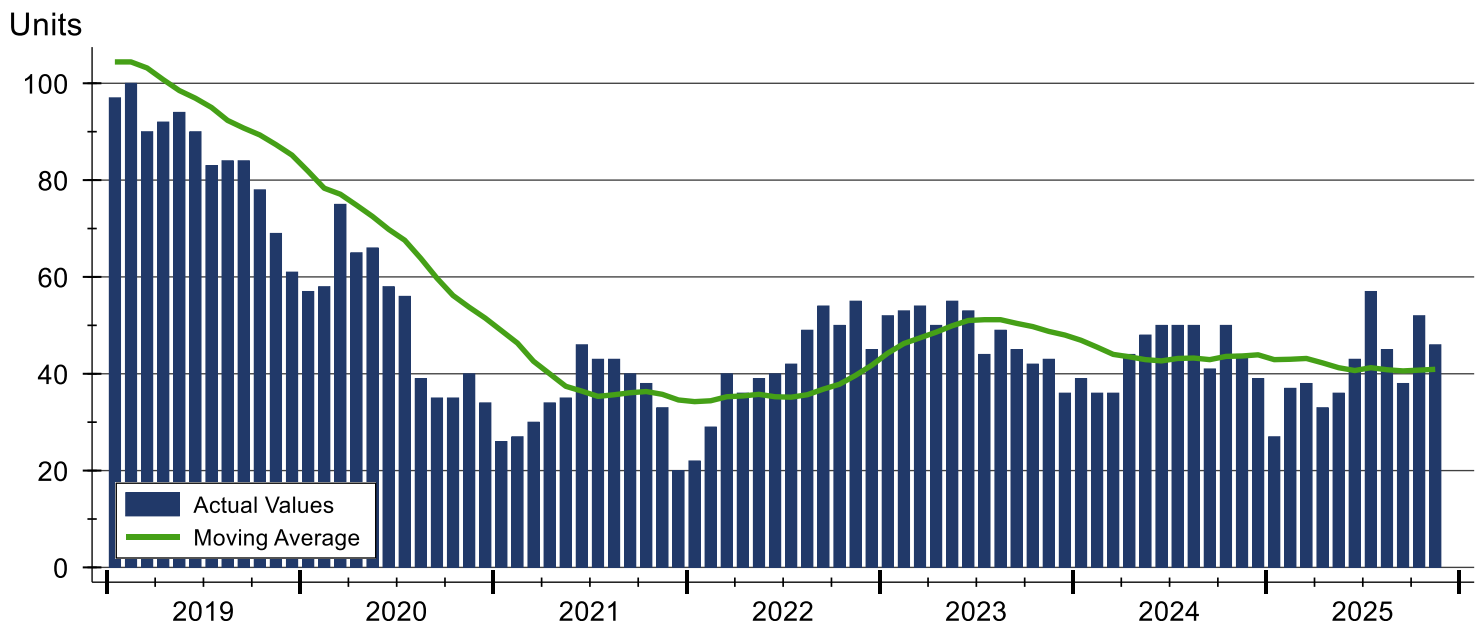
Pottawatomie County Active Listings Analysis

Summary Statistics for Active Listings		2025	End of November 2024	Change
Active Listings		46	44	4.5%
Volume (1,000s)		17,761	17,299	2.7%
Months' Supply		2.0	1.9	5.3%
Average	List Price	386,098	393,149	-1.8%
	Days on Market	39	61	-36.1%
	Percent of Original	97.5%	98.1%	-0.6%
Median	List Price	362,500	322,400	12.4%
	Days on Market	15	47	-68.1%
	Percent of Original	100.0%	100.0%	0.0%

A total of 46 homes were available for sale in Pottawatomie County at the end of November. This represents a 2.0 months' supply of active listings.

The median list price of homes on the market at the end of November was \$362,500, up 12.4% from 2024. The typical time on market for active listings was 15 days, down from 46 days a year earlier.

History of Active Listings





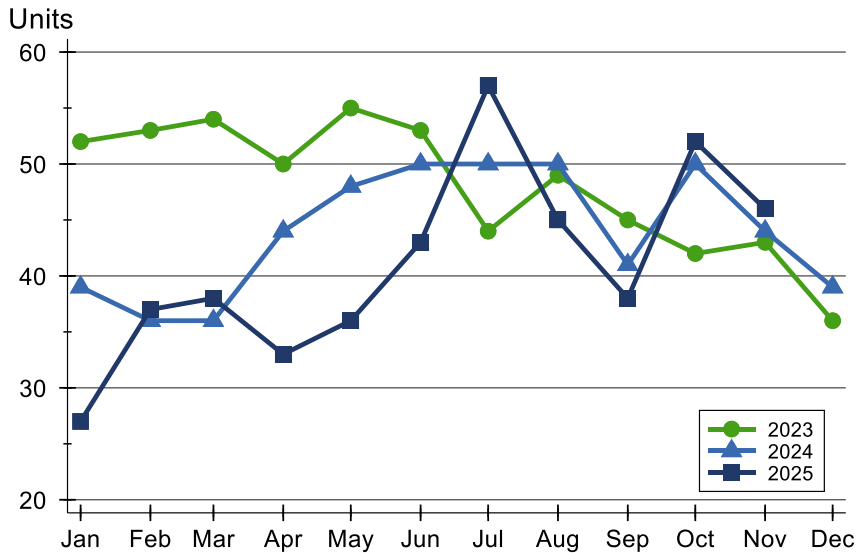
**November
2025**

Flint Hills MLS Statistics



Pottawatomie County Active Listings Analysis

Active Listings by Month



Month	2023	2024	2025
January	52	39	27
February	53	36	37
March	54	36	38
April	50	44	33
May	55	48	36
June	53	50	43
July	44	50	57
August	49	50	45
September	45	41	38
October	42	50	52
November	43	44	46
December	36	39	

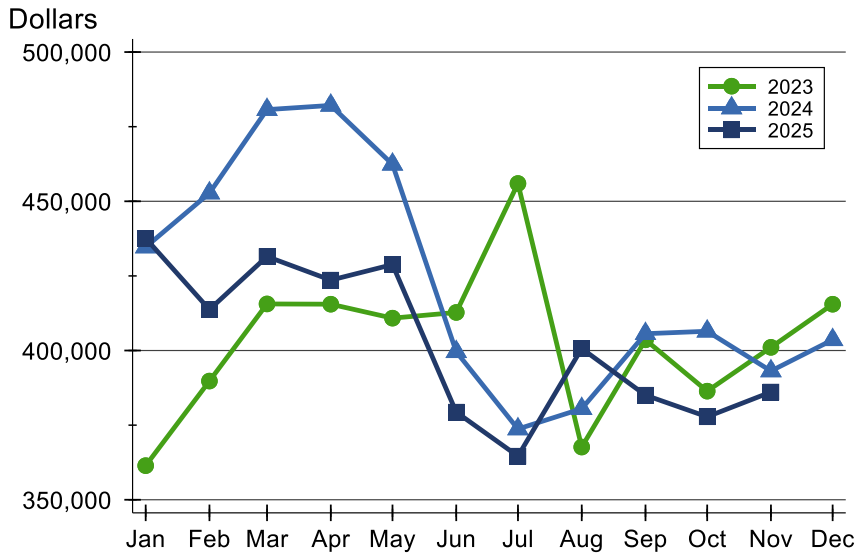
Active Listings by Price Range

Price Range	Active Listings Number	Percent	Months' Supply	List Price Average	Median	Days on Market Avg.	Med.	Price as % of Orig. Avg.	Med.
Below \$25,000	0	0.0%	N/A	N/A	N/A	N/A	N/A	N/A	N/A
\$25,000-\$49,999	0	0.0%	N/A	N/A	N/A	N/A	N/A	N/A	N/A
\$50,000-\$99,999	1	2.2%	N/A	74,900	74,900	164	164	83.3%	83.3%
\$100,000-\$124,999	1	2.2%	N/A	119,000	119,000	8	8	100.0%	100.0%
\$125,000-\$149,999	2	4.3%	N/A	130,000	130,000	29	29	90.3%	90.3%
\$150,000-\$174,999	1	2.2%	1.3	160,000	160,000	5	5	100.0%	100.0%
\$175,000-\$199,999	1	2.2%	2.0	179,000	179,000	12	12	100.0%	100.0%
\$200,000-\$249,999	4	8.7%	1.7	227,500	225,000	27	29	98.9%	100.0%
\$250,000-\$299,999	5	10.9%	1.4	280,260	280,000	42	27	94.9%	98.1%
\$300,000-\$399,999	11	23.9%	1.5	345,518	340,000	51	37	98.6%	100.0%
\$400,000-\$499,999	10	21.7%	2.2	447,380	444,950	16	4	99.0%	100.0%
\$500,000-\$749,999	10	21.7%	5.7	638,180	632,500	49	25	97.7%	98.9%
\$750,000-\$999,999	0	0.0%	N/A	N/A	N/A	N/A	N/A	N/A	N/A
\$1,000,000 and up	0	0.0%	N/A	N/A	N/A	N/A	N/A	N/A	N/A



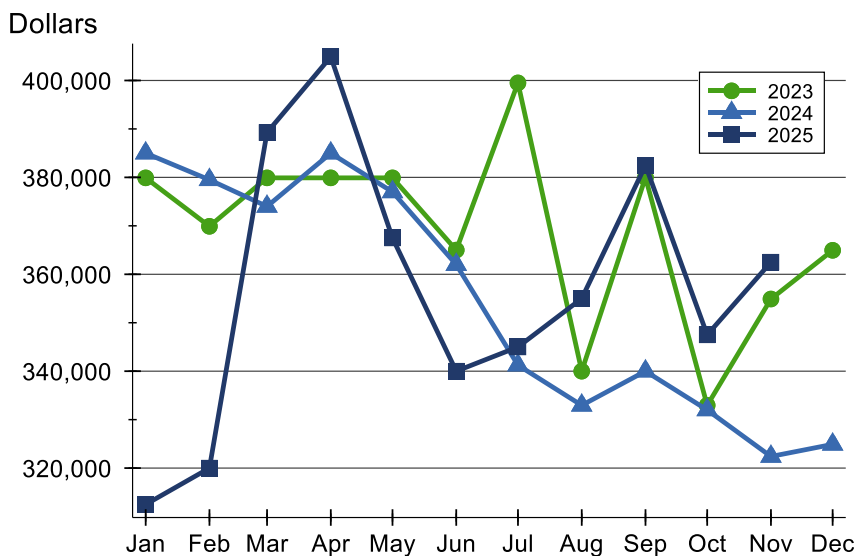
Pottawatomie County Active Listings Analysis

Average Price



Month	2023	2024	2025
January	361,429	434,659	437,624
February	389,778	452,747	413,734
March	415,615	480,714	431,498
April	415,527	482,127	423,592
May	410,853	462,386	428,804
June	412,764	399,586	379,366
July	455,972	373,705	364,618
August	367,671	380,508	400,684
September	403,582	405,635	385,046
October	386,388	406,458	377,808
November	401,074	393,149	386,098
December	415,517	403,595	

Median Price



Month	2023	2024	2025
January	379,900	385,000	312,500
February	369,900	379,500	320,000
March	379,900	374,000	389,250
April	379,900	385,000	404,900
May	379,900	377,000	367,500
June	365,000	362,000	340,000
July	399,500	341,250	345,000
August	340,000	332,950	355,000
September	380,000	340,000	382,475
October	332,950	332,000	347,500
November	354,900	322,400	362,500
December	364,950	324,900	



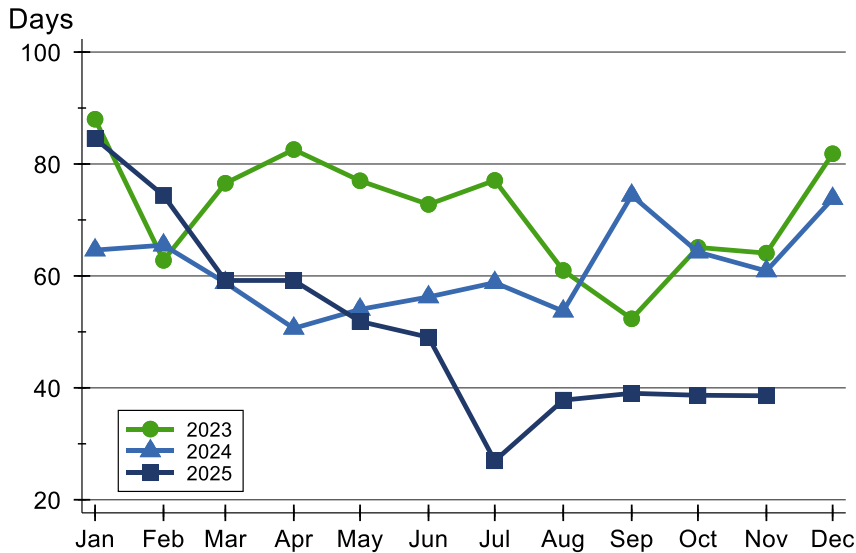
**November
2025**

Flint Hills MLS Statistics



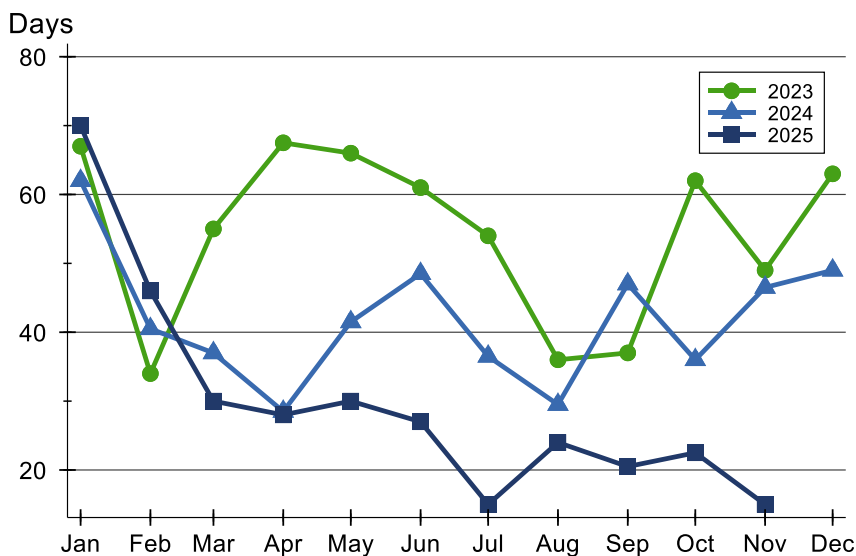
Pottawatomie County Active Listings Analysis

Average DOM



Month	2023	2024	2025
January	88	65	85
February	63	66	74
March	77	59	59
April	83	51	59
May	77	54	52
June	73	56	49
July	77	59	27
August	61	54	38
September	52	74	39
October	65	64	39
November	64	61	39
December	82	74	

Median DOM



Month	2023	2024	2025
January	67	62	70
February	34	41	46
March	55	37	30
April	68	29	28
May	66	42	30
June	61	49	27
July	54	37	15
August	36	30	24
September	37	47	21
October	62	36	23
November	49	47	15
December	63	49	



**November
2025**

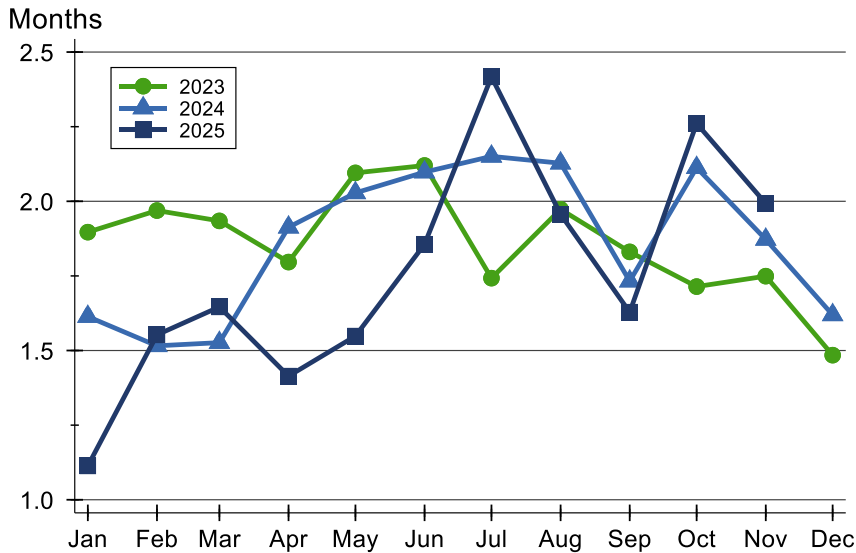
Flint Hills MLS Statistics



**FLINT HILLS
ASSOCIATION
OF REALTORS®**

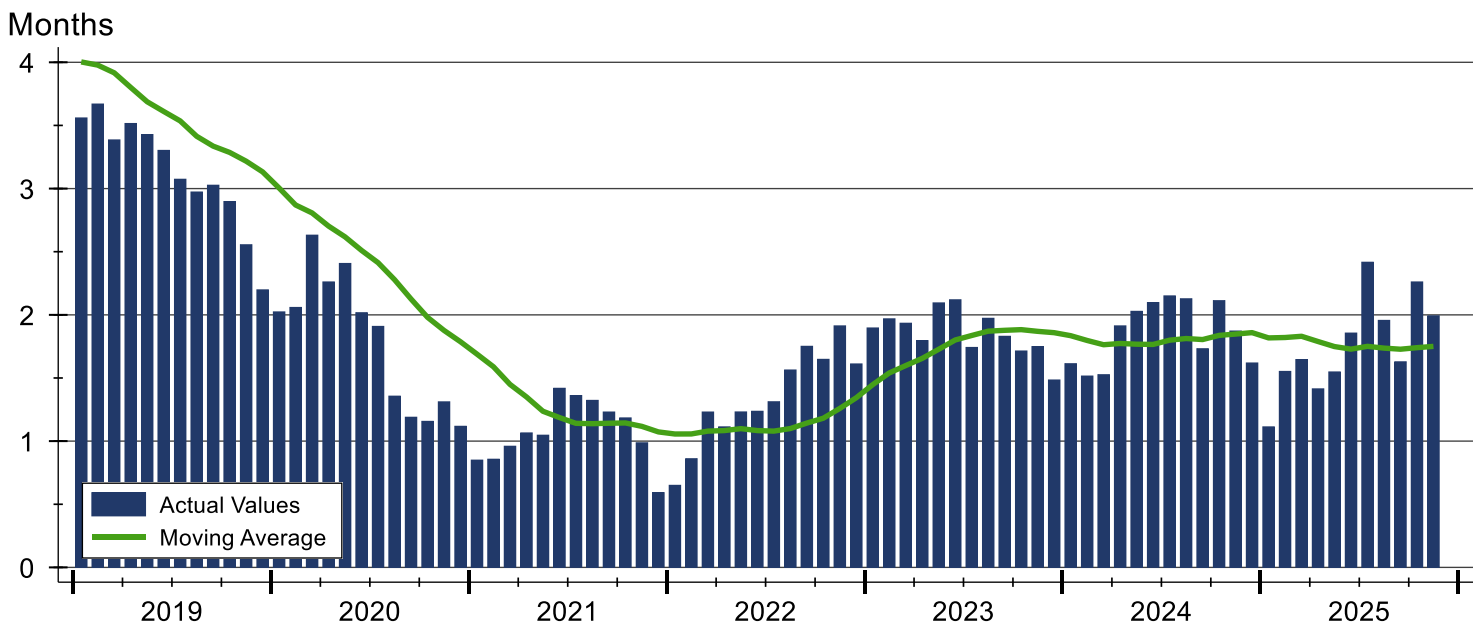
Pottawatomie County Months' Supply Analysis

Months' Supply by Month



Month	2023	2024	2025
January	1.9	1.6	1.1
February	2.0	1.5	1.6
March	1.9	1.5	1.6
April	1.8	1.9	1.4
May	2.1	2.0	1.5
June	2.1	2.1	1.9
July	1.7	2.2	2.4
August	2.0	2.1	2.0
September	1.8	1.7	1.6
October	1.7	2.1	2.3
November	1.7	1.9	2.0
December	1.5	1.6	

History of Month's Supply





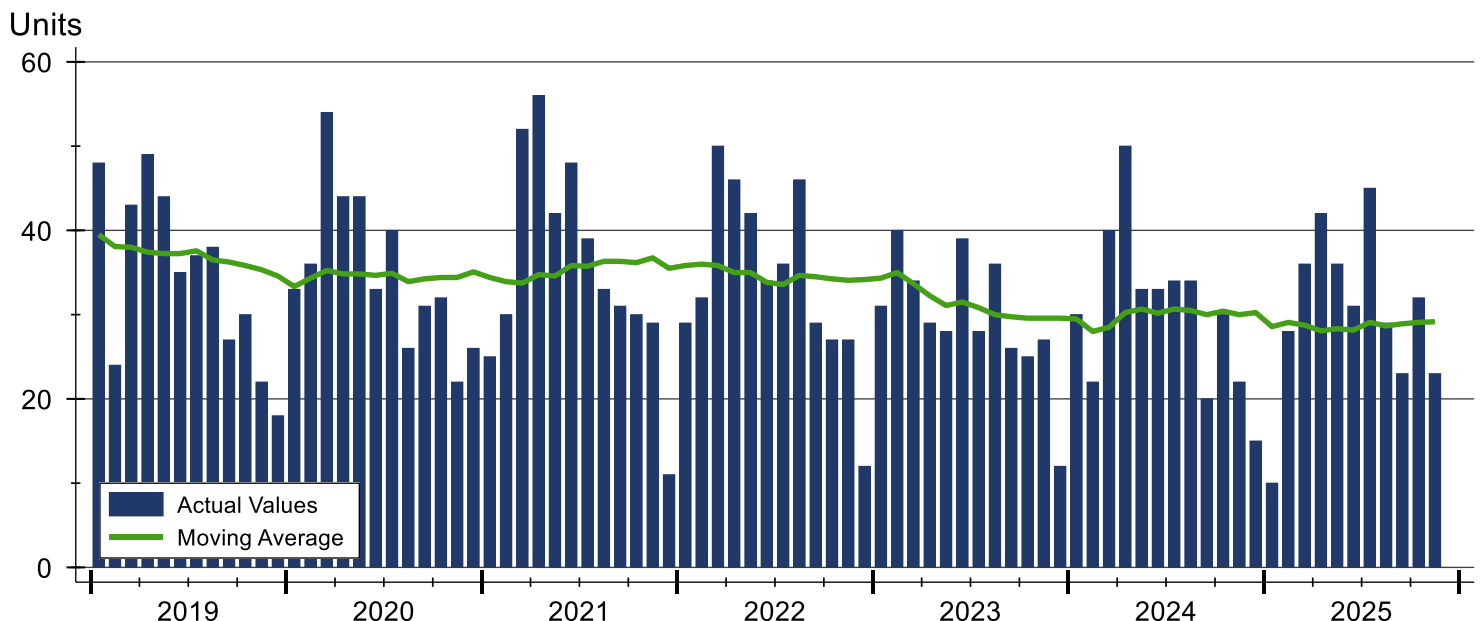
Pottawatomie County New Listings Analysis

Summary Statistics for New Listings		2025	November 2024	Change
Current Month	New Listings	23	22	4.5%
	Volume (1,000s)	7,702	6,229	23.6%
	Average List Price	334,857	283,149	18.3%
	Median List Price	315,000	276,950	13.7%
Year-to-Date	New Listings	335	348	-3.7%
	Volume (1,000s)	120,914	124,702	-3.0%
	Average List Price	360,938	358,340	0.7%
	Median List Price	345,000	330,000	4.5%

A total of 23 new listings were added in Pottawatomie County during November, up 4.5% from the same month in 2024. Year-to-date Pottawatomie County has seen 335 new listings.

The median list price of these homes was \$315,000 up from \$276,950 in 2024.

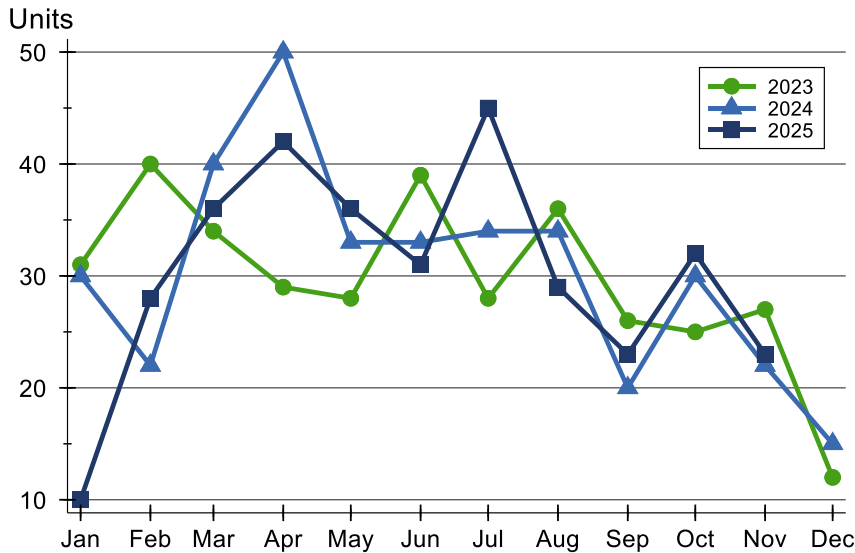
History of New Listings





Pottawatomie County New Listings Analysis

New Listings by Month



Month	2023	2024	2025
January	31	30	10
February	40	22	28
March	34	40	36
April	29	50	42
May	28	33	36
June	39	33	31
July	28	34	45
August	36	34	29
September	26	20	23
October	25	30	32
November	27	22	23
December	12	15	

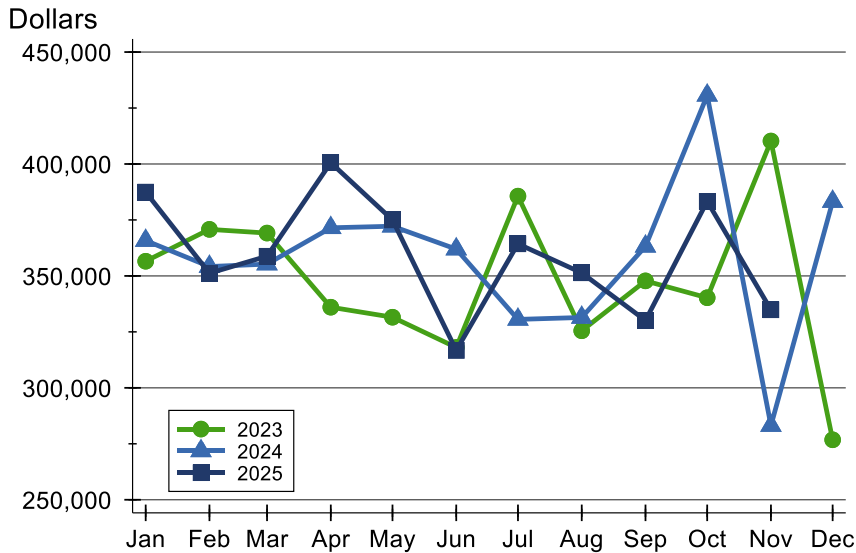
New Listings by Price Range

Price Range	New Listings Number	Percent	List Price Average	Median	Days on Market Avg.	Med.	Price as % of Orig. Avg.	Med.
Below \$25,000	0	0.0%	N/A	N/A	N/A	N/A	N/A	N/A
\$25,000-\$49,999	0	0.0%	N/A	N/A	N/A	N/A	N/A	N/A
\$50,000-\$99,999	1	4.3%	80,000	80,000	10	10	100.0%	100.0%
\$100,000-\$124,999	0	0.0%	N/A	N/A	N/A	N/A	N/A	N/A
\$125,000-\$149,999	2	8.7%	142,000	142,000	23	23	100.0%	100.0%
\$150,000-\$174,999	2	8.7%	160,000	160,000	3	3	100.0%	100.0%
\$175,000-\$199,999	2	8.7%	192,450	192,450	4	4	100.0%	100.0%
\$200,000-\$249,999	2	8.7%	230,000	230,000	10	10	100.0%	100.0%
\$250,000-\$299,999	1	4.3%	299,900	299,900	18	18	97.4%	97.4%
\$300,000-\$399,999	5	21.7%	336,800	340,000	10	10	100.0%	100.0%
\$400,000-\$499,999	5	21.7%	430,980	435,000	5	4	100.0%	100.0%
\$500,000-\$749,999	3	13.0%	678,000	699,000	4	4	100.0%	100.0%
\$750,000-\$999,999	0	0.0%	N/A	N/A	N/A	N/A	N/A	N/A
\$1,000,000 and up	0	0.0%	N/A	N/A	N/A	N/A	N/A	N/A



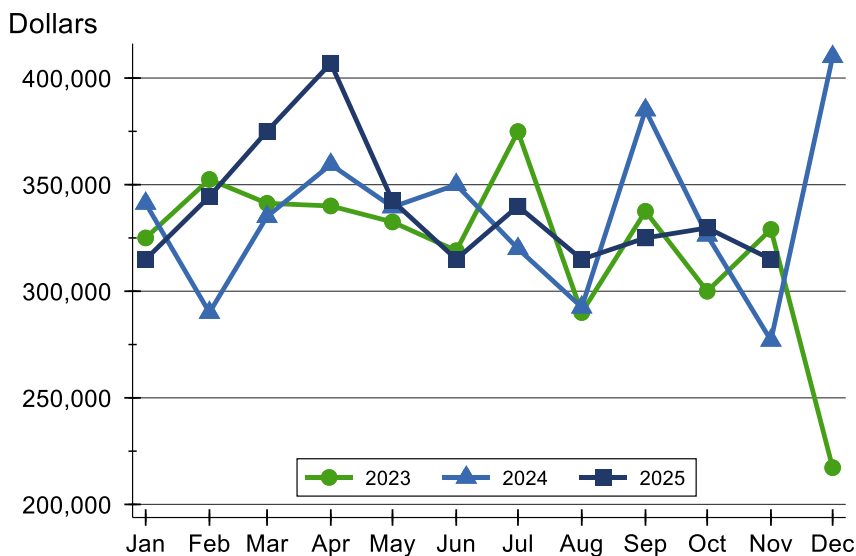
Pottawatomie County New Listings Analysis

Average Price



Month	2023	2024	2025
January	356,561	367,790	387,460
February	370,801	354,200	351,213
March	369,144	355,278	358,800
April	336,028	371,502	400,583
May	331,554	372,205	375,011
June	318,048	361,974	316,745
July	385,643	330,579	364,328
August	325,497	331,443	351,374
September	347,785	363,213	330,100
October	340,256	430,667	383,325
November	410,263	283,149	334,857
December	276,792	383,227	

Median Price



Month	2023	2024	2025
January	325,000	341,200	314,950
February	352,450	290,000	344,450
March	341,250	335,000	375,000
April	340,000	359,450	406,950
May	332,500	339,500	342,450
June	319,000	349,950	315,000
July	374,900	319,950	339,900
August	290,000	292,500	315,000
September	337,500	385,000	325,000
October	300,000	326,250	329,700
November	329,000	276,950	315,000
December	217,250	410,000	



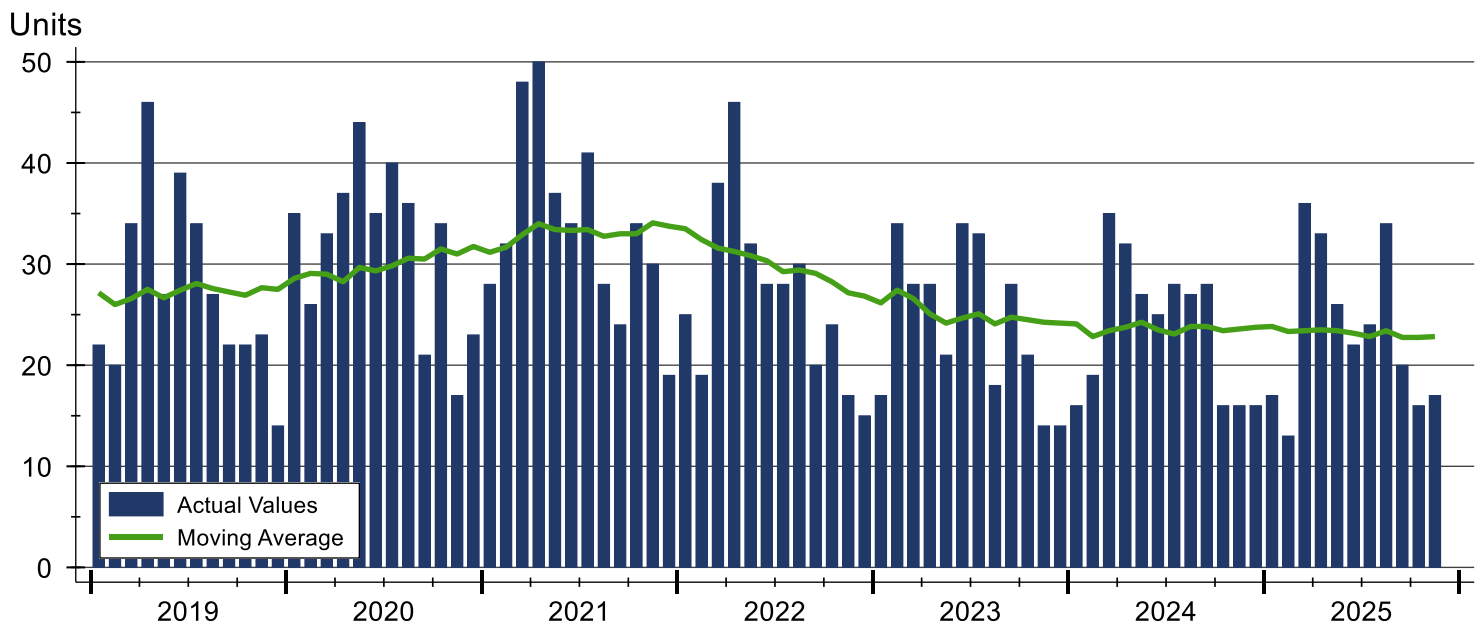
Pottawatomie County Contracts Written Analysis

Summary Statistics for Contracts Written		November			Year-to-Date		
		2025	2024	Change	2025	2024	Change
Contracts Written		17	16	6.3%	258	269	-4.1%
Volume (1,000s)		5,341	5,083	5.1%	91,305	93,392	-2.2%
Average	Sale Price	314,147	317,669	-1.1%	353,895	347,183	1.9%
	Days on Market	52	49	6.1%	32	42	-23.8%
	Percent of Original	97.9%	96.2%	1.8%	98.4%	97.1%	1.3%
Median	Sale Price	300,000	314,950	-4.7%	339,900	330,000	3.0%
	Days on Market	36	13	176.9%	19	22	-13.6%
	Percent of Original	100.0%	98.8%	1.2%	99.3%	98.3%	1.0%

A total of 17 contracts for sale were written in Pottawatomie County during the month of November, up from 16 in 2024. The median list price of these homes was \$300,000, down from \$314,950 the prior year.

Half of the homes that went under contract in November were on the market less than 36 days, compared to 13 days in November 2024.

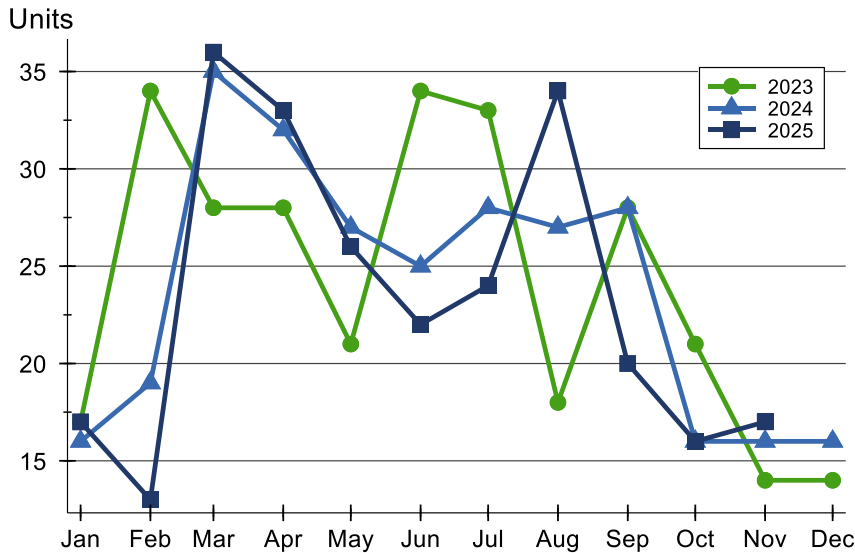
History of Contracts Written





Pottawatomie County Contracts Written Analysis

Contracts Written by Month



Month	2023	2024	2025
January	17	16	17
February	34	19	13
March	28	35	36
April	28	32	33
May	21	27	26
June	34	25	22
July	33	28	24
August	18	27	34
September	28	28	20
October	21	16	16
November	14	16	17
December	14	16	16

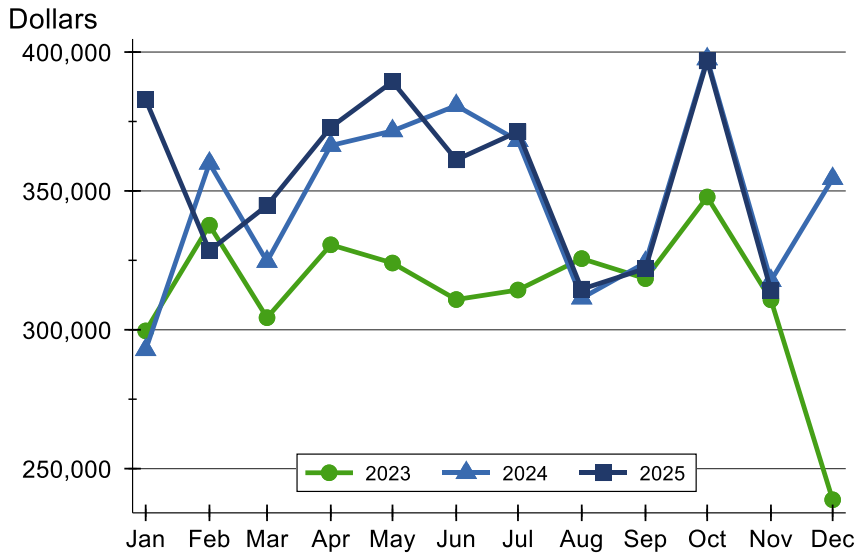
Contracts Written by Price Range

Price Range	Contracts Written Number	Percent	List Price Average	Median	Days on Market Avg.	Med.	Price as % of Orig. Avg.	Med.
Below \$25,000	0	0.0%	N/A	N/A	N/A	N/A	N/A	N/A
\$25,000-\$49,999	0	0.0%	N/A	N/A	N/A	N/A	N/A	N/A
\$50,000-\$99,999	0	0.0%	N/A	N/A	N/A	N/A	N/A	N/A
\$100,000-\$124,999	1	5.9%	123,900	123,900	106	106	85.4%	85.4%
\$125,000-\$149,999	1	5.9%	149,000	149,000	20	20	100.0%	100.0%
\$150,000-\$174,999	2	11.8%	174,450	174,450	63	63	93.5%	93.5%
\$175,000-\$199,999	2	11.8%	192,450	192,450	4	4	100.0%	100.0%
\$200,000-\$249,999	1	5.9%	235,000	235,000	6	6	100.0%	100.0%
\$250,000-\$299,999	1	5.9%	274,000	274,000	35	35	100.0%	100.0%
\$300,000-\$399,999	4	23.5%	333,725	339,950	66	63	98.0%	97.8%
\$400,000-\$499,999	4	23.5%	442,475	425,000	80	54	100.0%	100.0%
\$500,000-\$749,999	1	5.9%	720,000	720,000	2	2	100.0%	100.0%
\$750,000-\$999,999	0	0.0%	N/A	N/A	N/A	N/A	N/A	N/A
\$1,000,000 and up	0	0.0%	N/A	N/A	N/A	N/A	N/A	N/A



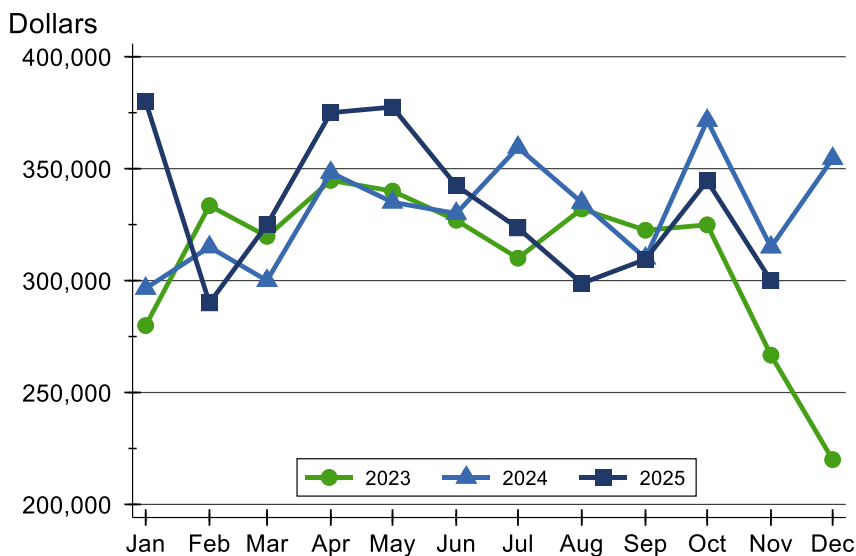
Pottawatomie County Contracts Written Analysis

Average Price



Month	2023	2024	2025
January	299,594	292,788	382,859
February	337,656	359,942	328,477
March	304,354	324,583	344,743
April	330,600	366,341	372,923
May	324,033	371,615	389,329
June	310,883	380,712	361,207
July	314,315	368,096	371,308
August	325,628	311,400	314,629
September	318,421	324,163	322,063
October	347,819	397,509	396,828
November	310,786	317,669	314,147
December	238,786	354,426	

Median Price

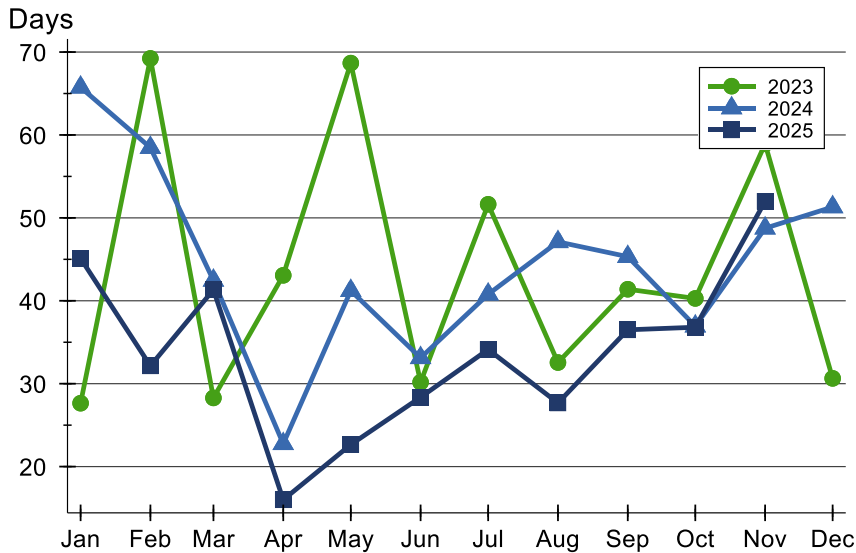


Month	2023	2024	2025
January	279,900	296,500	380,000
February	333,500	315,000	290,000
March	319,750	300,000	324,950
April	344,750	348,250	375,000
May	340,000	335,000	377,500
June	326,950	330,000	342,450
July	310,000	359,500	323,500
August	332,000	334,900	298,750
September	322,500	310,000	309,500
October	324,900	371,500	344,500
November	266,703	314,950	300,000
December	220,000	354,500	



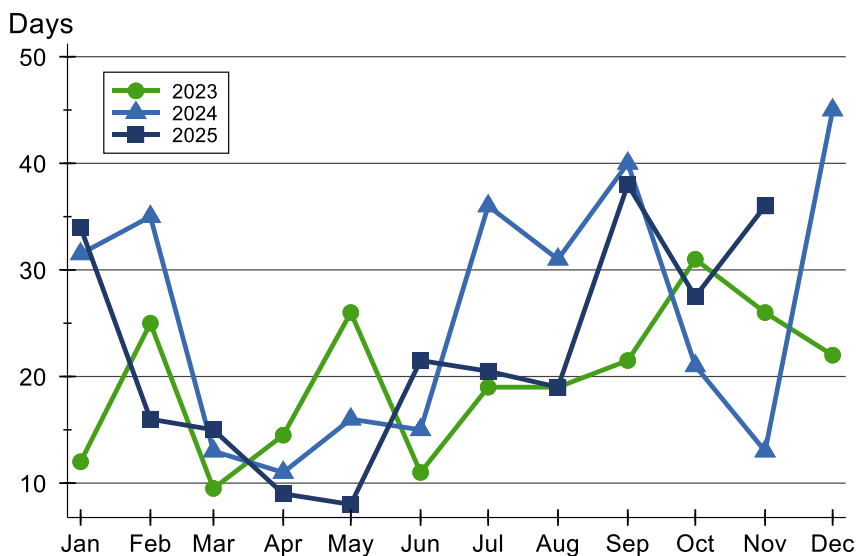
Pottawatomie County Contracts Written Analysis

Average DOM



Month	2023	2024	2025
January	28	66	45
February	69	58	32
March	28	42	41
April	43	23	16
May	69	41	23
June	30	33	28
July	52	41	34
August	33	47	28
September	41	45	37
October	40	37	37
November	59	49	52
December	31	51	

Median DOM



Month	2023	2024	2025
January	12	32	34
February	25	35	16
March	10	13	15
April	15	11	9
May	26	16	8
June	11	15	22
July	19	36	21
August	19	31	19
September	22	40	38
October	31	21	28
November	26	13	36
December	22	45	



**November
2025**

Flint Hills MLS Statistics



**FLINT HILLS
ASSOCIATION
OF REALTORS®**

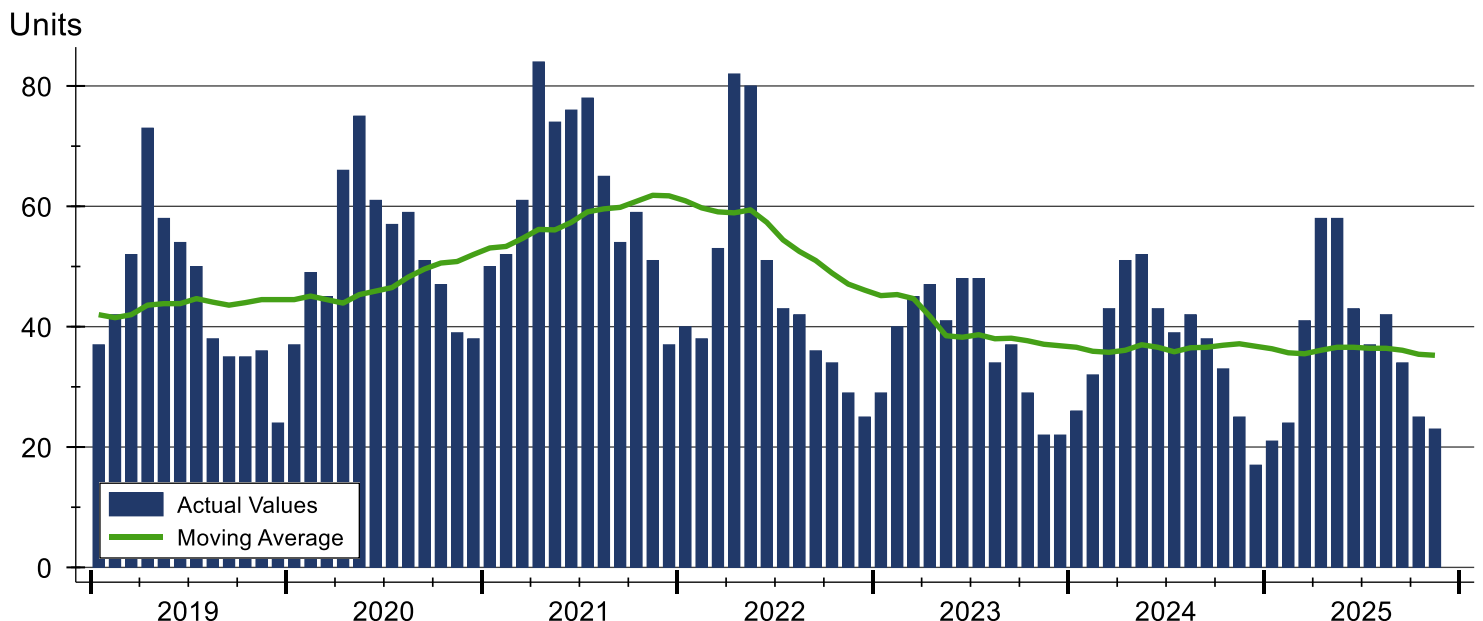
Pottawatomie County Pending Contracts Analysis

Summary Statistics for Pending Contracts		End of November		
		2025	2024	Change
Pending Contracts		23	25	-8.0%
Volume (1,000s)		8,071	8,513	-5.2%
Average	List Price	350,909	340,524	3.0%
	Days on Market	46	44	4.5%
	Percent of Original	98.3%	98.6%	-0.3%
Median	List Price	327,000	324,500	0.8%
	Days on Market	27	17	58.8%
	Percent of Original	100.0%	100.0%	0.0%

A total of 23 listings in Pottawatomie County had contracts pending at the end of November, down from 25 contracts pending at the end of November 2024.

Pending contracts reflect listings with a contract in place at the end of the month. In contrast, contracts written measures the number of listings put under contract during the month.

History of Pending Contracts





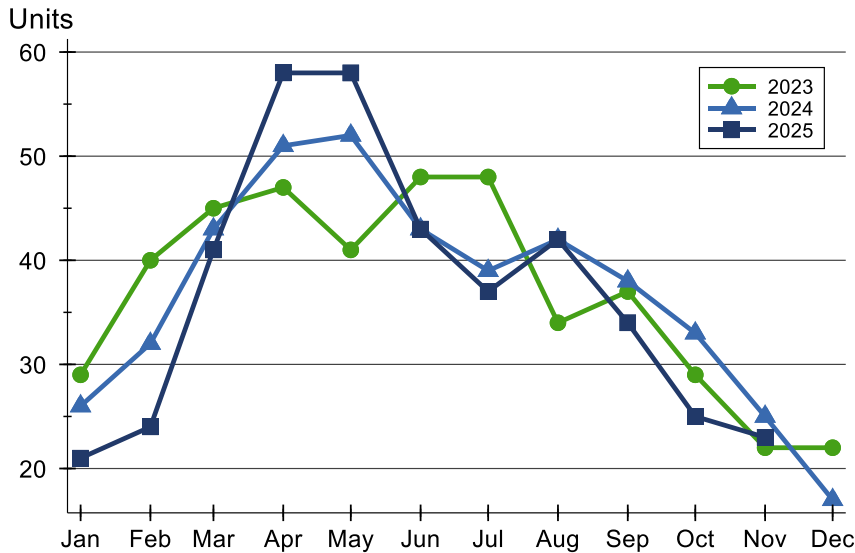
**November
2025**

Flint Hills MLS Statistics



Pottawatomie County Pending Contracts Analysis

Pending Contracts by Month



Month	2023	2024	2025
January	29	26	21
February	40	32	24
March	45	43	41
April	47	51	58
May	41	52	58
June	48	43	43
July	48	39	37
August	34	42	42
September	37	38	34
October	29	33	25
November	22	25	23
December	22	17	

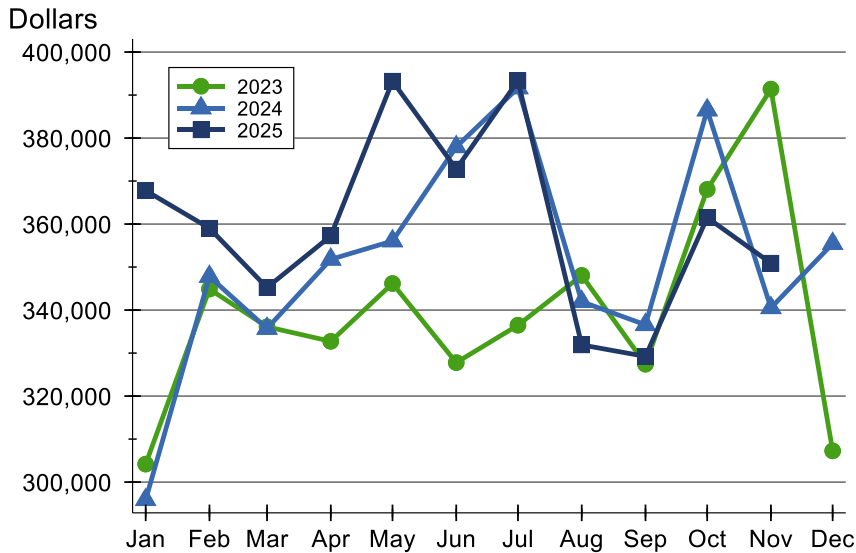
Pending Contracts by Price Range

Price Range	Pending Contracts Number	Percent	List Price Average	Median	Days on Market Avg.	Med.	Price as % of Orig. Avg.	Med.
Below \$25,000	0	0.0%	N/A	N/A	N/A	N/A	N/A	N/A
\$25,000-\$49,999	0	0.0%	N/A	N/A	N/A	N/A	N/A	N/A
\$50,000-\$99,999	0	0.0%	N/A	N/A	N/A	N/A	N/A	N/A
\$100,000-\$124,999	1	4.3%	123,900	123,900	106	106	85.4%	85.4%
\$125,000-\$149,999	1	4.3%	149,000	149,000	20	20	100.0%	100.0%
\$150,000-\$174,999	1	4.3%	174,900	174,900	65	65	98.5%	98.5%
\$175,000-\$199,999	2	8.7%	192,450	192,450	4	4	100.0%	100.0%
\$200,000-\$249,999	2	8.7%	232,500	232,500	17	17	98.9%	98.9%
\$250,000-\$299,999	1	4.3%	274,000	274,000	35	35	100.0%	100.0%
\$300,000-\$399,999	5	21.7%	324,400	325,000	44	36	98.3%	100.0%
\$400,000-\$499,999	8	34.8%	441,525	425,000	65	33	98.5%	100.0%
\$500,000-\$749,999	2	8.7%	672,500	672,500	30	30	100.0%	100.0%
\$750,000-\$999,999	0	0.0%	N/A	N/A	N/A	N/A	N/A	N/A
\$1,000,000 and up	0	0.0%	N/A	N/A	N/A	N/A	N/A	N/A



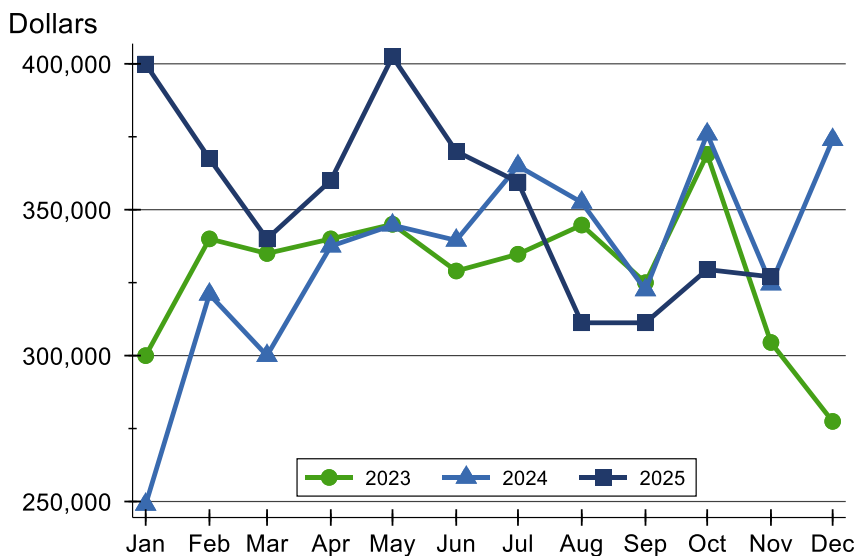
Pottawatomie County Pending Contracts Analysis

Average Price



Month	2023	2024	2025
January	304,181	295,888	367,788
February	344,887	347,797	359,038
March	336,118	335,716	345,226
April	332,734	351,796	357,247
May	346,183	356,067	393,239
June	327,780	377,952	372,798
July	336,484	391,650	393,323
August	348,061	341,955	331,900
September	327,416	336,580	329,225
October	368,062	386,509	361,510
November	391,386	340,524	350,909
December	307,259	355,451	

Median Price

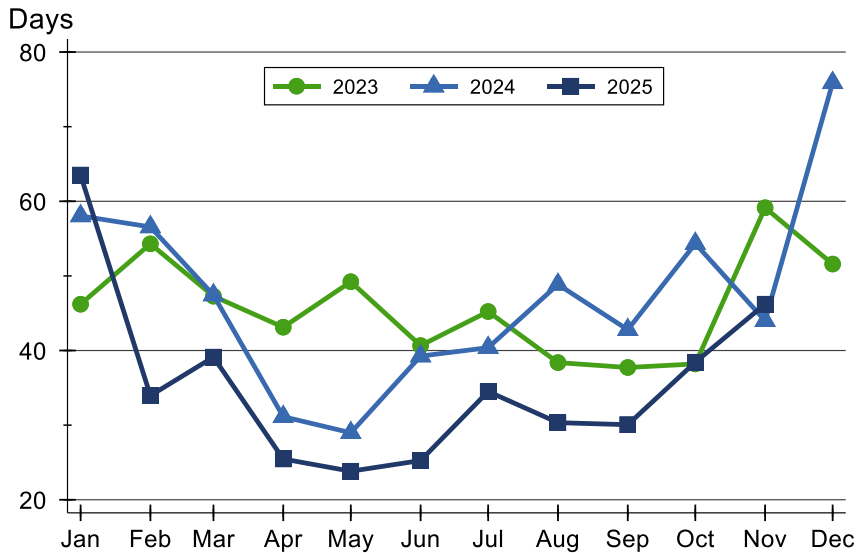


Month	2023	2024	2025
January	300,000	249,000	399,900
February	340,000	321,000	367,500
March	335,000	300,000	340,000
April	340,000	337,500	360,000
May	345,000	344,700	402,425
June	329,000	339,500	370,000
July	334,750	365,000	359,500
August	344,750	352,500	311,250
September	325,000	322,500	311,250
October	369,000	375,900	329,500
November	304,500	324,500	327,000
December	277,450	374,000	



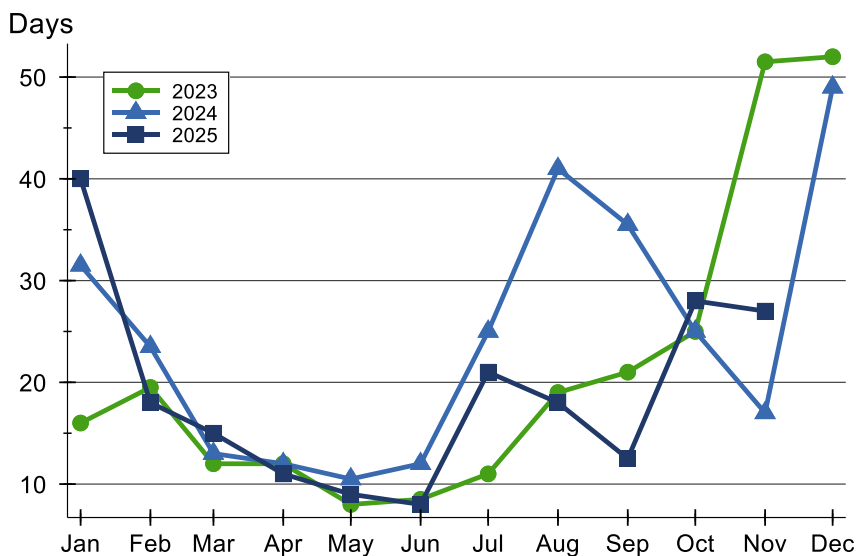
Pottawatomie County Pending Contracts Analysis

Average DOM



Month	2023	2024	2025
January	46	58	64
February	54	57	34
March	47	47	39
April	43	31	25
May	49	29	24
June	41	39	25
July	45	40	35
August	38	49	30
September	38	43	30
October	38	54	38
November	59	44	46
December	52	76	

Median DOM



Month	2023	2024	2025
January	16	32	40
February	20	24	18
March	12	13	15
April	12	12	11
May	8	11	9
June	9	12	8
July	11	25	21
August	19	41	18
September	21	36	13
October	25	25	28
November	52	17	27
December	52	49	