



**April  
2025**

# Flint Hills MLS Statistics



**FLINT HILLS  
ASSOCIATION  
OF REALTORS®**

## Pottawatomie County Housing Report



### Market Overview

#### Pottawatomie County Home Sales Rose in April

Total home sales in Pottawatomie County rose by 15.8% last month to 22 units, compared to 19 units in April 2024. Total sales volume was \$7.2 million, up 22.8% from a year earlier.

The median sale price in April was \$321,000, up from \$275,000 a year earlier. Homes that sold in April were typically on the market for 16 days and sold for 100.0% of their list prices.

#### Pottawatomie County Active Listings Down at End of April

The total number of active listings in Pottawatomie County at the end of April was 40 units, down from 51 at the same point in 2024. This represents a 1.7 months' supply of homes available for sale. The median list price of homes on the market at the end of April was \$359,700.

During April, a total of 34 contracts were written up from 32 in April 2024. At the end of the month, there were 63 contracts still pending.

### Report Contents

- Summary Statistics – Page 2
- Closed Listing Analysis – Page 3
- Active Listings Analysis – Page 7
- Months' Supply Analysis – Page 11
- New Listings Analysis – Page 12
- Contracts Written Analysis – Page 15
- Pending Contracts Analysis – Page 19

### Contact Information

Margaret Pendleton, Association Executive  
 Flint Hills Association of REALTORS®  
 205 S. Seth Child Road  
 Manhattan, KS 66502  
 785-776-1203  
[ae@flinthillsrealtors.net](mailto:ae@flinthillsrealtors.net)  
[www.flinthillsrealtors.net](http://www.flinthillsrealtors.net)



**April  
2025**

# Flint Hills MLS Statistics



**FLINT HILLS  
ASSOCIATION  
OF REALTORS®**

## Pottawatomie County Summary Statistics

April MLS Statistics Three-year History		Current Month			Year-to-Date		
		2025	2024	2023	2025	2024	2023
<b>Home Sales</b>		<b>22</b>	<b>19</b>	<b>25</b>	<b>61</b>	<b>71</b>	<b>85</b>
Change from prior year		15.8%	-24.0%	-7.4%	-14.1%	-16.5%	-2.3%
<b>Active Listings</b>		<b>40</b>	<b>51</b>	<b>57</b>	<b>N/A</b>	<b>N/A</b>	<b>N/A</b>
Change from prior year		-21.6%	-10.5%	32.6%			
<b>Months' Supply</b>		<b>1.7</b>	<b>2.2</b>	<b>2.1</b>	<b>N/A</b>	<b>N/A</b>	<b>N/A</b>
Change from prior year		-22.7%	4.8%	61.5%			
<b>New Listings</b>		<b>42</b>	<b>48</b>	<b>29</b>	<b>116</b>	<b>135</b>	<b>132</b>
Change from prior year		-12.5%	65.5%	-37.0%	-14.1%	2.3%	-15.9%
<b>Contracts Written</b>		<b>34</b>	<b>32</b>	<b>27</b>	<b>101</b>	<b>102</b>	<b>105</b>
Change from prior year		6.3%	18.5%	-41.3%	-1.0%	-2.9%	-18.0%
<b>Pending Contracts</b>		<b>63</b>	<b>56</b>	<b>52</b>	<b>N/A</b>	<b>N/A</b>	<b>N/A</b>
Change from prior year		12.5%	7.7%	-40.2%			
<b>Sales Volume (1,000s)</b>		<b>7,216</b>	<b>5,877</b>	<b>8,724</b>	<b>21,624</b>	<b>20,791</b>	<b>27,678</b>
Change from prior year		22.8%	-32.6%	6.9%	4.0%	-24.9%	8.0%
<b>Average</b>	<b>Sale Price</b>	<b>327,993</b>	<b>309,311</b>	<b>348,976</b>	<b>354,494</b>	<b>292,831</b>	<b>325,624</b>
	Change from prior year	6.0%	-11.4%	15.4%	21.1%	-10.1%	10.5%
	<b>List Price of Actives</b>	<b>390,691</b>	<b>448,288</b>	<b>393,429</b>	<b>N/A</b>	<b>N/A</b>	<b>N/A</b>
	Change from prior year	-12.8%	13.9%	9.2%			
	<b>Days on Market</b>	<b>41</b>	<b>47</b>	<b>56</b>	<b>50</b>	<b>54</b>	<b>53</b>
Change from prior year	-12.8%	-16.1%	194.7%	-7.4%	1.9%	89.3%	
<b>Percent of List</b>	<b>99.1%</b>	<b>98.3%</b>	<b>99.7%</b>	<b>99.0%</b>	<b>98.7%</b>	<b>99.5%</b>	
Change from prior year	0.8%	-1.4%	-1.1%	0.3%	-0.8%	-1.4%	
<b>Percent of Original</b>	<b>98.0%</b>	<b>97.3%</b>	<b>99.6%</b>	<b>98.0%</b>	<b>97.3%</b>	<b>98.0%</b>	
Change from prior year	0.7%	-2.3%	-1.3%	0.7%	-0.7%	-2.2%	
<b>Median</b>	<b>Sale Price</b>	<b>321,000</b>	<b>275,000</b>	<b>330,000</b>	<b>340,000</b>	<b>268,000</b>	<b>316,000</b>
	Change from prior year	16.7%	-16.7%	20.0%	26.9%	-15.2%	10.9%
	<b>List Price of Actives</b>	<b>359,700</b>	<b>365,000</b>	<b>364,900</b>	<b>N/A</b>	<b>N/A</b>	<b>N/A</b>
	Change from prior year	-1.5%	0.0%	-5.2%			
	<b>Days on Market</b>	<b>16</b>	<b>13</b>	<b>11</b>	<b>31</b>	<b>28</b>	<b>20</b>
Change from prior year	23.1%	18.2%	266.7%	10.7%	40.0%	185.7%	
<b>Percent of List</b>	<b>100.0%</b>	<b>99.3%</b>	<b>100.0%</b>	<b>100.0%</b>	<b>99.5%</b>	<b>100.0%</b>	
Change from prior year	0.7%	-0.7%	0.0%	0.5%	-0.5%	0.0%	
<b>Percent of Original</b>	<b>100.0%</b>	<b>98.0%</b>	<b>100.0%</b>	<b>99.0%</b>	<b>98.6%</b>	<b>99.1%</b>	
Change from prior year	2.0%	-2.0%	0.0%	0.4%	-0.5%	-0.9%	

Note: Year-to-date statistics cannot be calculated for Active Listings, Months' Supply and Pending Contracts.



# Pottawatomie County Closed Listings Analysis

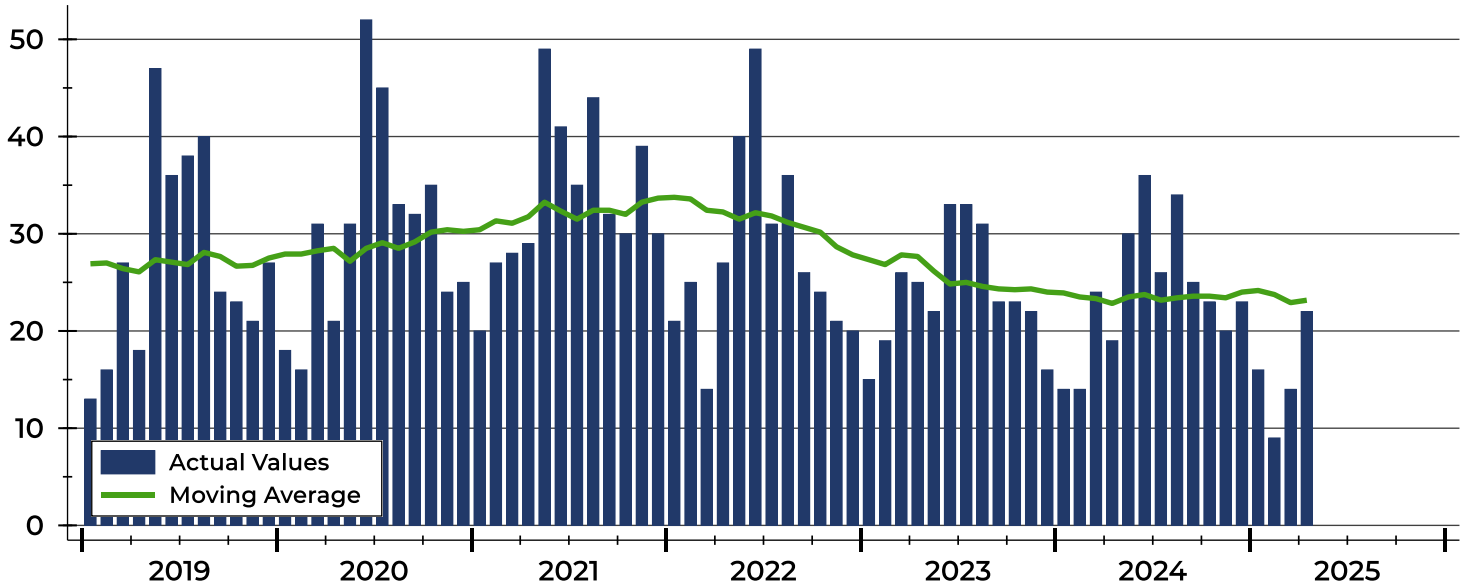
Summary Statistics for Closed Listings		2025	April 2024	Change	2025	Year-to-Date 2024	Change
Closed Listings		22	19	15.8%	61	71	-14.1%
Volume (1,000s)		7,216	5,877	22.8%	21,624	20,791	4.0%
Months' Supply		1.7	2.2	-22.7%	N/A	N/A	N/A
Average	Sale Price	327,993	309,311	6.0%	354,494	292,831	21.1%
	Days on Market	41	47	-12.8%	50	54	-7.4%
	Percent of List	99.1%	98.3%	0.8%	99.0%	98.7%	0.3%
	Percent of Original	98.0%	97.3%	0.7%	98.0%	97.3%	0.7%
Median	Sale Price	321,000	275,000	16.7%	340,000	268,000	26.9%
	Days on Market	16	13	23.1%	31	28	10.7%
	Percent of List	100.0%	99.3%	0.7%	100.0%	99.5%	0.5%
	Percent of Original	100.0%	98.0%	2.0%	99.0%	98.6%	0.4%

A total of 22 homes sold in Pottawatomie County in April, up from 19 units in April 2024. Total sales volume rose to \$7.2 million compared to \$5.9 million in the previous year.

The median sales price in April was \$321,000, up 16.7% compared to the prior year. Median days on market was 16 days, down from 32 days in March, but up from 13 in April 2024.

## History of Closed Listings

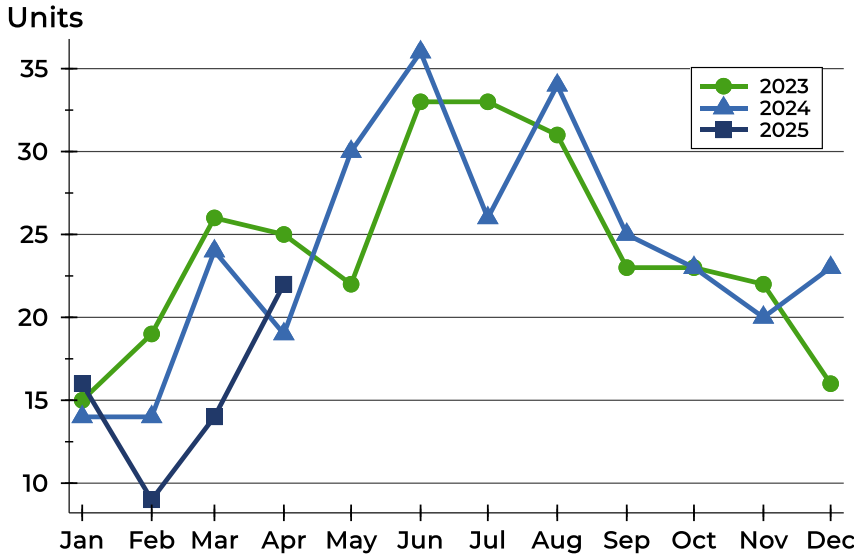
Units





## Pottawatomie County Closed Listings Analysis

### Closed Listings by Month



Month	2023	2024	2025
January	15	14	16
February	19	14	9
March	26	24	14
April	25	19	22
May	22	30	
June	33	36	
July	33	26	
August	31	34	
September	23	25	
October	23	23	
November	22	20	
December	16	23	

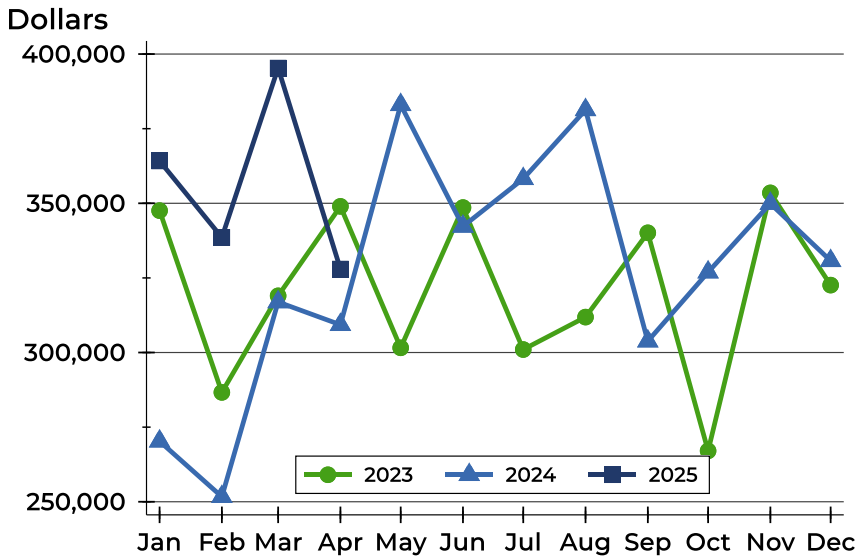
### Closed Listings by Price Range

Price Range	Sales		Months' Supply	Sale Price		Days on Market		Price as % of List		Price as % of Orig.	
	Number	Percent		Average	Median	Avg.	Med.	Avg.	Med.	Avg.	Med.
Below \$25,000	0	0.0%	N/A	N/A	N/A	N/A	N/A	N/A	N/A	N/A	N/A
\$25,000-\$49,999	0	0.0%	N/A	N/A	N/A	N/A	N/A	N/A	N/A	N/A	N/A
\$50,000-\$99,999	1	4.5%	0.0	90,000	90,000	6	6	103.4%	103.4%	103.4%	103.4%
\$100,000-\$124,999	0	0.0%	N/A	N/A	N/A	N/A	N/A	N/A	N/A	N/A	N/A
\$125,000-\$149,999	1	4.5%	1.5	144,250	144,250	3	3	99.5%	99.5%	99.5%	99.5%
\$150,000-\$174,999	0	0.0%	N/A	N/A	N/A	N/A	N/A	N/A	N/A	N/A	N/A
\$175,000-\$199,999	1	4.5%	0.0	190,000	190,000	1	1	100.1%	100.1%	100.1%	100.1%
\$200,000-\$249,999	1	4.5%	1.4	245,000	245,000	83	83	98.4%	98.4%	98.4%	98.4%
\$250,000-\$299,999	4	18.2%	1.3	280,275	286,950	91	71	97.9%	97.9%	94.7%	94.2%
\$300,000-\$399,999	9	40.9%	1.4	343,833	352,500	45	17	98.3%	100.0%	97.3%	100.0%
\$400,000-\$499,999	3	13.6%	2.7	417,000	420,000	10	4	100.9%	101.2%	100.1%	100.0%
\$500,000-\$749,999	2	9.1%	1.8	540,000	540,000	3	3	100.0%	100.0%	100.0%	100.0%
\$750,000-\$999,999	0	0.0%	6.0	N/A	N/A	N/A	N/A	N/A	N/A	N/A	N/A
\$1,000,000 and up	0	0.0%	N/A	N/A	N/A	N/A	N/A	N/A	N/A	N/A	N/A



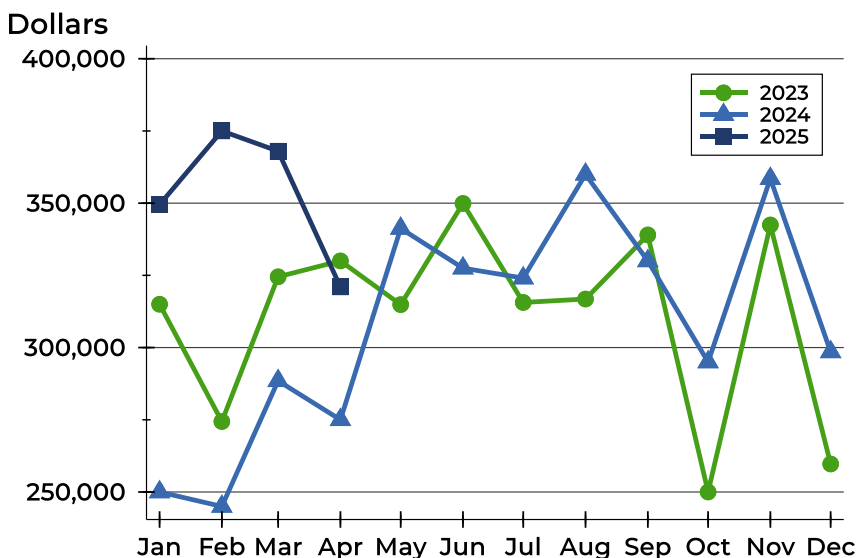
# Pottawatomie County Closed Listings Analysis

## Average Price



Month	2023	2024	2025
January	347,548	270,281	<b>364,181</b>
February	286,647	251,689	<b>338,544</b>
March	319,004	316,938	<b>395,321</b>
April	348,976	309,311	<b>327,993</b>
May	301,576	383,004	
June	348,576	342,261	
July	301,005	358,219	
August	311,874	381,306	
September	340,115	303,804	
October	267,050	326,926	
November	353,491	349,902	
December	322,588	330,731	

## Median Price

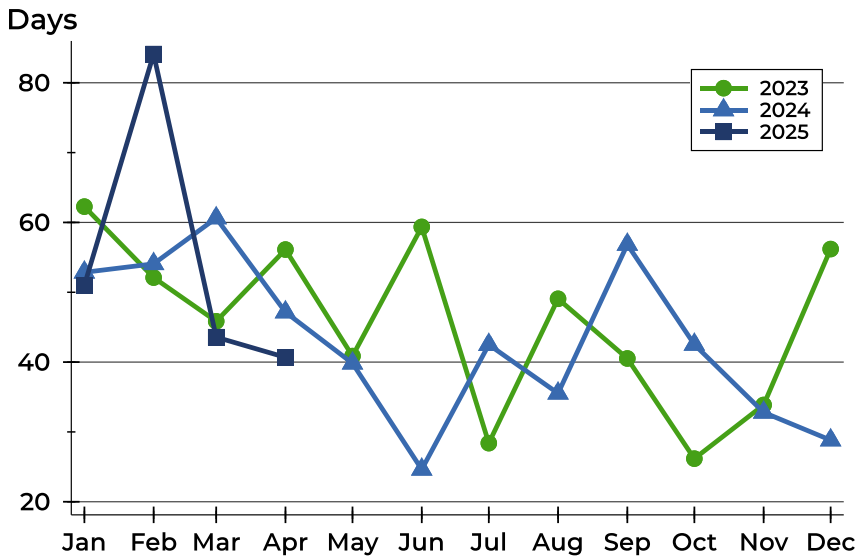


Month	2023	2024	2025
January	315,000	250,000	<b>349,500</b>
February	274,400	245,000	<b>375,000</b>
March	324,500	288,500	<b>368,000</b>
April	330,000	275,000	<b>321,000</b>
May	314,875	341,250	
June	349,900	327,500	
July	315,626	324,050	
August	316,806	359,975	
September	339,000	330,000	
October	250,000	295,000	
November	342,450	358,500	
December	259,703	298,500	



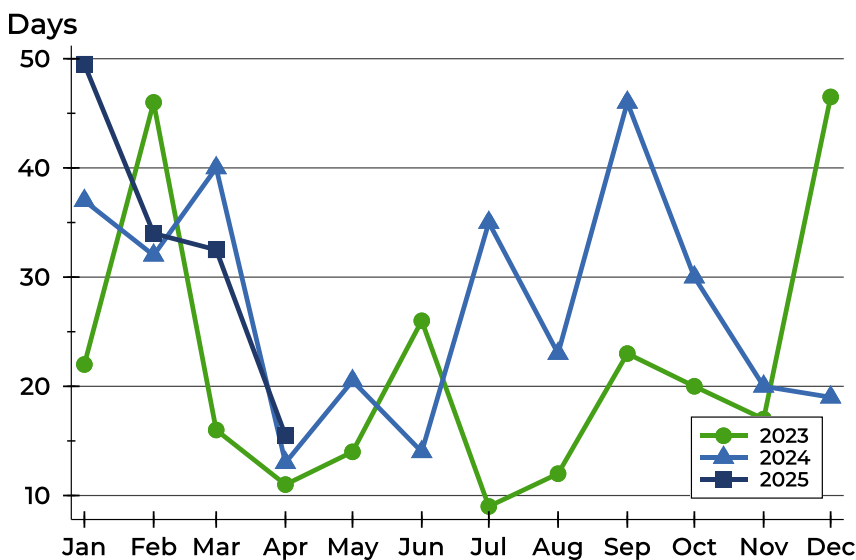
# Pottawatomie County Closed Listings Analysis

## Average DOM



Month	2023	2024	2025
January	62	53	51
February	52	54	84
March	46	61	44
April	56	47	41
May	41	40	
June	59	25	
July	28	43	
August	49	36	
September	41	57	
October	26	43	
November	34	33	
December	56	29	

## Median DOM



Month	2023	2024	2025
January	22	37	50
February	46	32	34
March	16	40	33
April	11	13	16
May	14	21	
June	26	14	
July	9	35	
August	12	23	
September	23	46	
October	20	30	
November	17	20	
December	47	19	



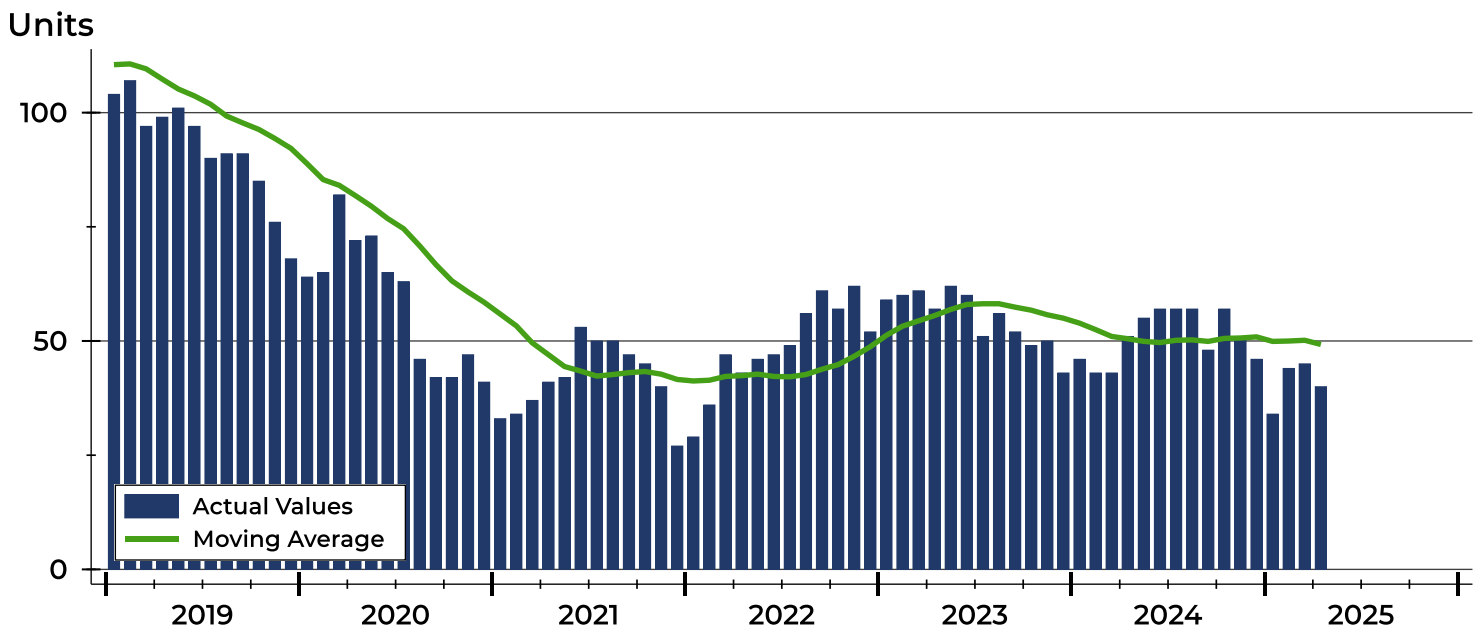
# Pottawatomie County Active Listings Analysis

Summary Statistics for Active Listings		2025	End of April 2024	Change
Active Listings		40	51	-21.6%
Volume (1,000s)		15,628	22,863	-31.6%
Months' Supply		1.7	2.2	-22.7%
Average	List Price	390,691	448,288	-12.8%
	Days on Market	60	53	13.2%
	Percent of Original	98.4%	98.8%	-0.4%
Median	List Price	359,700	365,000	-1.5%
	Days on Market	29	31	-6.5%
	Percent of Original	100.0%	100.0%	0.0%

A total of 40 homes were available for sale in Pottawatomie County at the end of April. This represents a 1.7 months' supply of active listings.

The median list price of homes on the market at the end of April was \$359,700, down 1.5% from 2024. The typical time on market for active listings was 28 days, down from 31 days a year earlier.

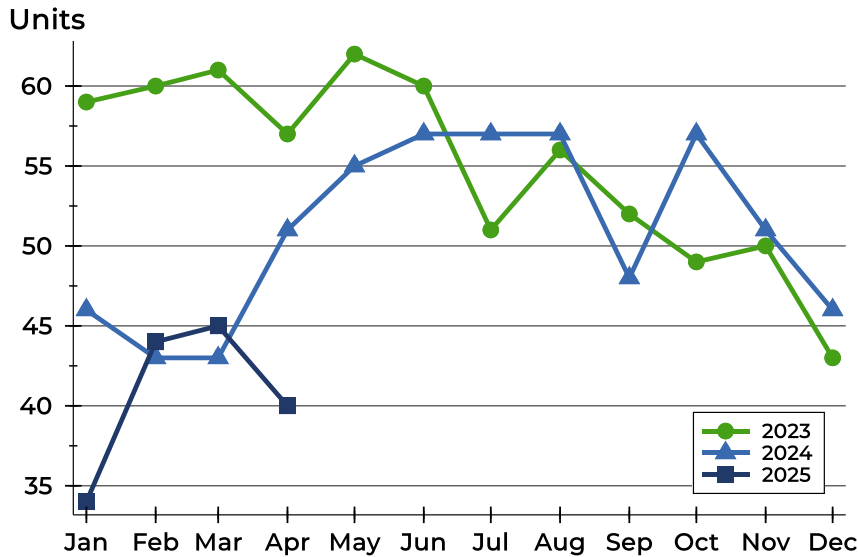
## History of Active Listings





## Pottawatomie County Active Listings Analysis

### Active Listings by Month



Month	2023	2024	2025
<b>January</b>	59	46	<b>34</b>
<b>February</b>	60	43	<b>44</b>
<b>March</b>	61	43	<b>45</b>
<b>April</b>	57	51	<b>40</b>
<b>May</b>	62	55	
<b>June</b>	60	57	
<b>July</b>	51	57	
<b>August</b>	56	57	
<b>September</b>	52	48	
<b>October</b>	49	57	
<b>November</b>	50	51	
<b>December</b>	43	46	

### Active Listings by Price Range

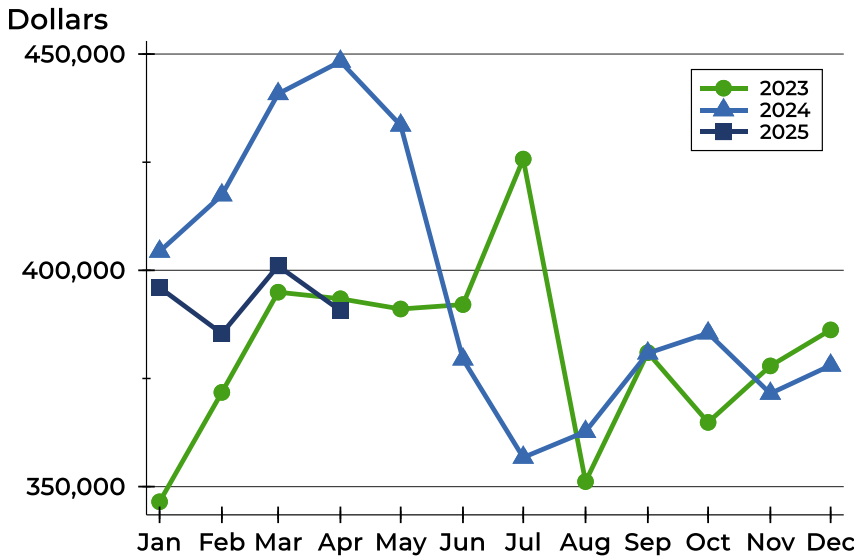
Price Range	Active Listings		Months' Supply	List Price		Days on Market		Price as % of Orig.	
	Number	Percent		Average	Median	Avg.	Med.	Avg.	Med.
Below \$25,000	0	0.0%	N/A	N/A	N/A	N/A	N/A	N/A	N/A
\$25,000-\$49,999	0	0.0%	N/A	N/A	N/A	N/A	N/A	N/A	N/A
\$50,000-\$99,999	0	0.0%	0.0	N/A	N/A	N/A	N/A	N/A	N/A
\$100,000-\$124,999	1	2.5%	N/A	105,000	105,000	155	155	87.5%	87.5%
\$125,000-\$149,999	1	2.5%	1.5	125,000	125,000	12	12	100.0%	100.0%
\$150,000-\$174,999	2	5.0%	N/A	168,900	168,900	83	83	100.0%	100.0%
\$175,000-\$199,999	0	0.0%	0.0	N/A	N/A	N/A	N/A	N/A	N/A
\$200,000-\$249,999	3	7.5%	1.4	242,233	242,500	47	38	95.5%	94.0%
\$250,000-\$299,999	4	10.0%	1.3	284,950	287,450	59	37	99.2%	100.0%
\$300,000-\$399,999	12	30.0%	1.4	339,621	336,950	67	40	99.2%	100.0%
\$400,000-\$499,999	11	27.5%	2.7	433,536	425,000	21	20	99.3%	100.0%
\$500,000-\$749,999	4	10.0%	1.8	637,250	619,500	74	72	99.8%	100.0%
\$750,000-\$999,999	2	5.0%	6.0	900,000	900,000	187	187	92.5%	92.5%
\$1,000,000 and up	0	0.0%	N/A	N/A	N/A	N/A	N/A	N/A	N/A





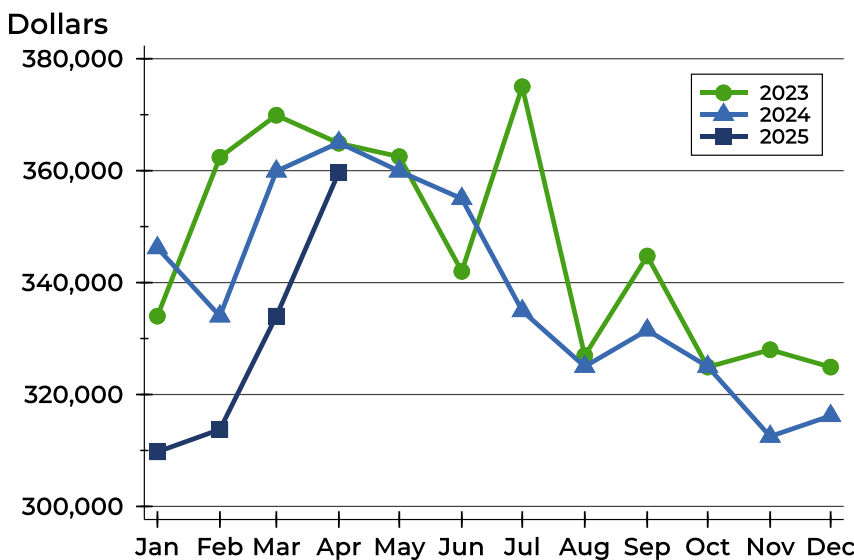
# Pottawatomie County Active Listings Analysis

## Average Price



Month	2023	2024	2025
January	346,498	404,365	<b>396,028</b>
February	371,789	417,395	<b>385,392</b>
March	394,956	440,809	<b>401,023</b>
April	393,429	448,288	<b>390,691</b>
May	391,065	433,521	
June	392,093	379,446	
July	425,723	356,743	
August	351,161	362,711	
September	380,967	380,836	
October	364,845	385,474	
November	377,906	371,523	
December	386,226	378,028	

## Median Price

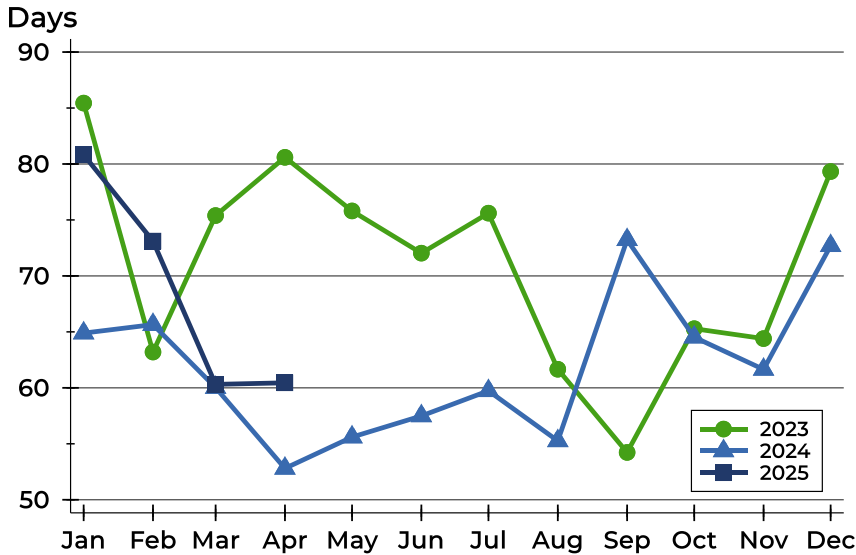


Month	2023	2024	2025
January	334,000	346,200	<b>309,750</b>
February	362,400	334,000	<b>313,750</b>
March	369,900	359,900	<b>334,000</b>
April	364,900	365,000	<b>359,700</b>
May	362,500	359,900	
June	342,000	355,000	
July	375,000	334,950	
August	326,950	325,000	
September	344,750	331,500	
October	324,900	325,000	
November	328,000	312,500	
December	324,900	316,200	



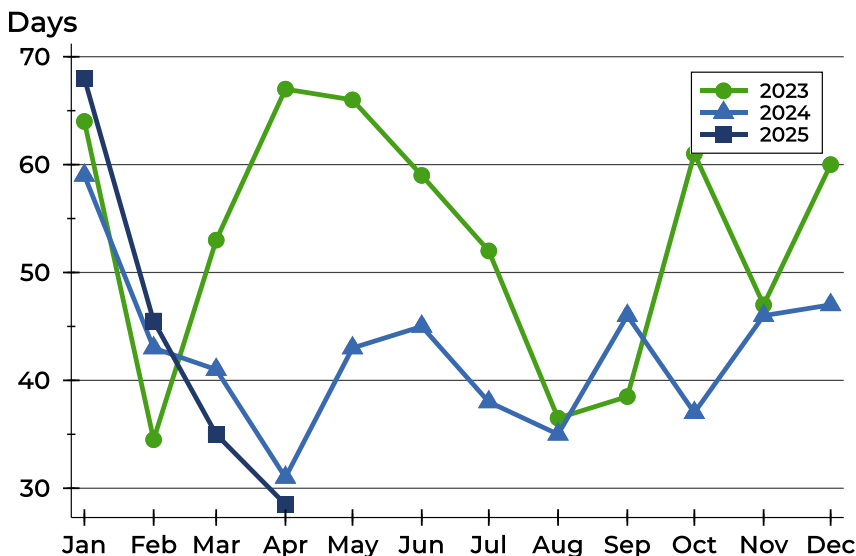
## Pottawatomie County Active Listings Analysis

### Average DOM



Month	2023	2024	2025
January	85	65	<b>81</b>
February	63	66	<b>73</b>
March	75	60	<b>60</b>
April	81	53	<b>60</b>
May	76	56	
June	72	57	
July	76	60	
August	62	55	
September	54	73	
October	65	65	
November	64	62	
December	79	73	

### Median DOM

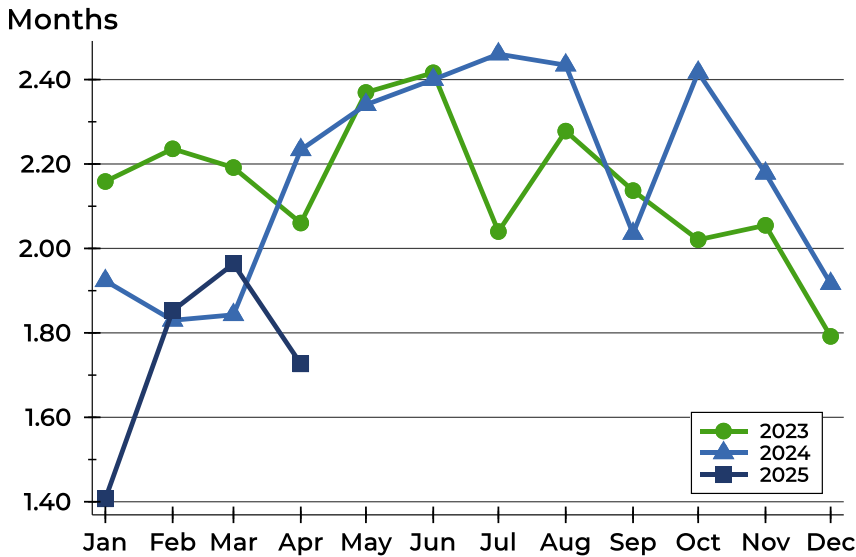


Month	2023	2024	2025
January	64	59	<b>68</b>
February	35	43	<b>46</b>
March	53	41	<b>35</b>
April	67	31	<b>29</b>
May	66	43	
June	59	45	
July	52	38	
August	37	35	
September	39	46	
October	61	37	
November	47	46	
December	60	47	



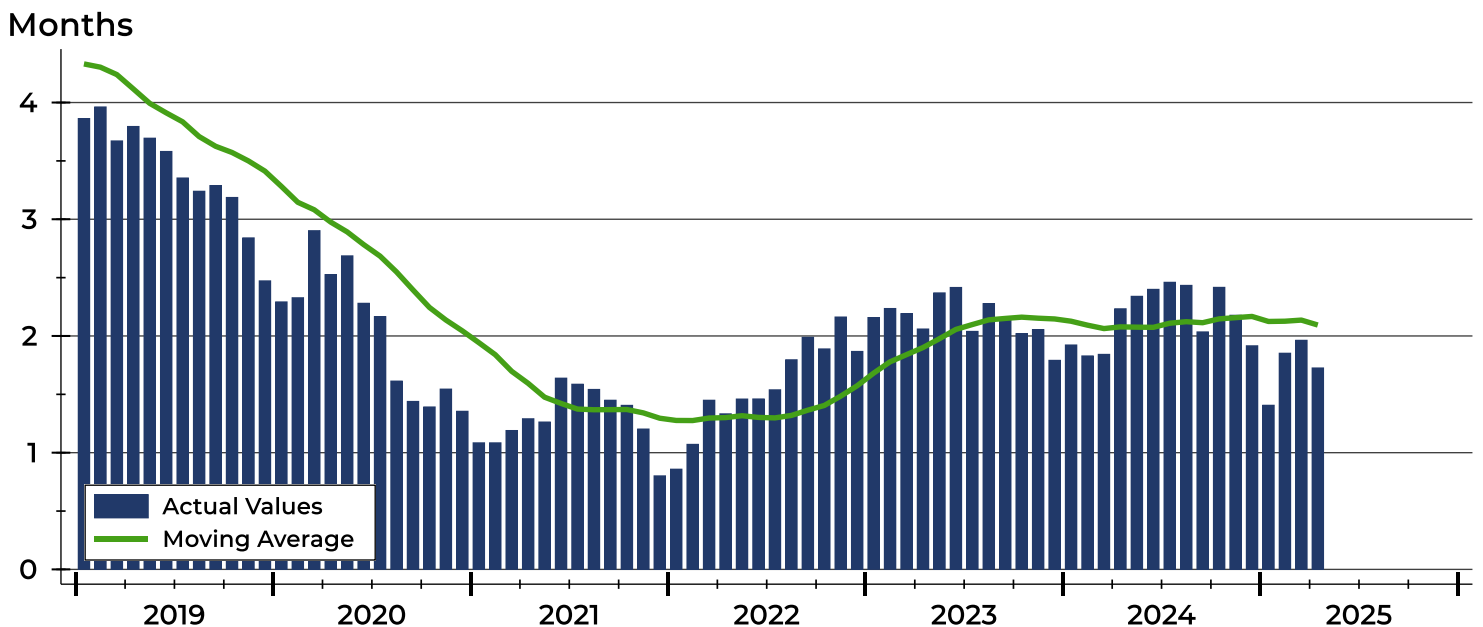
# Pottawatomie County Months' Supply Analysis

## Months' Supply by Month



Month	2023	2024	2025
January	2.2	1.9	1.4
February	2.2	1.8	1.9
March	2.2	1.8	2.0
April	2.1	2.2	1.7
May	2.4	2.3	
June	2.4	2.4	
July	2.0	2.5	
August	2.3	2.4	
September	2.1	2.0	
October	2.0	2.4	
November	2.1	2.2	
December	1.8	1.9	

## History of Month's Supply





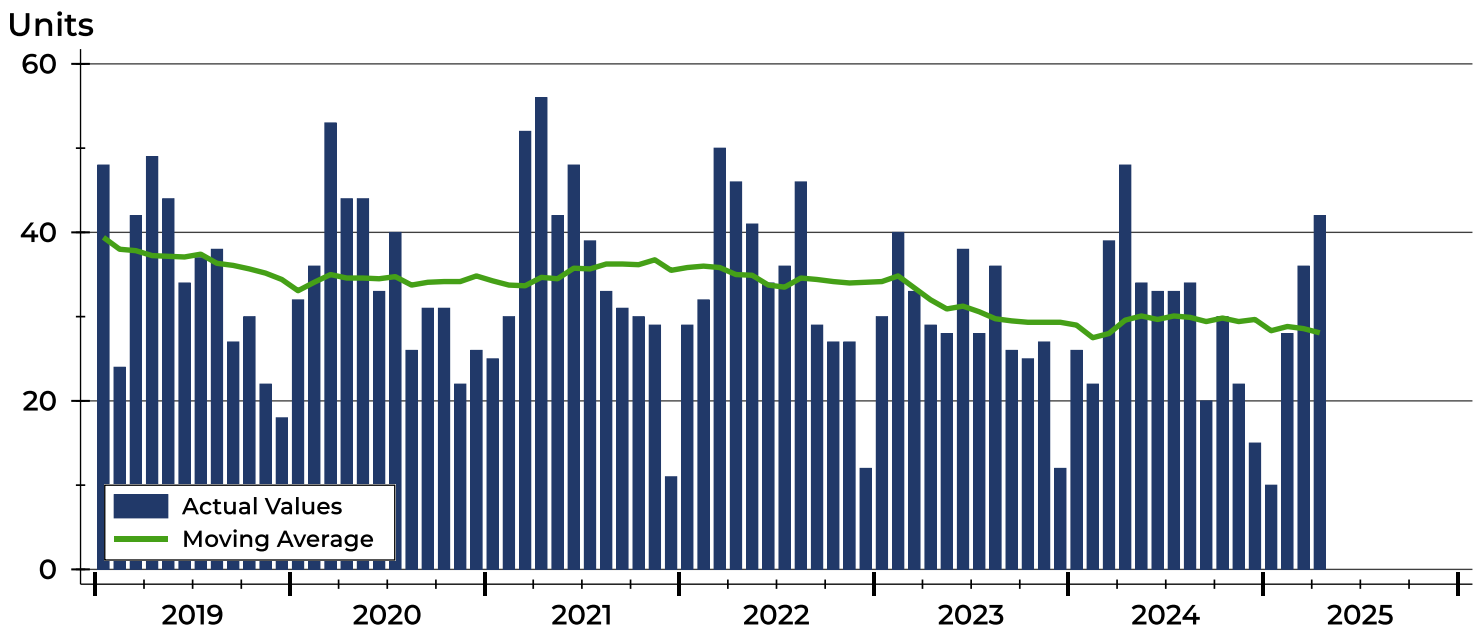
# Pottawatomie County New Listings Analysis

Summary Statistics for New Listings		2025	April 2024	Change
Current Month	New Listings	42	48	-12.5%
	Volume (1,000s)	16,991	17,955	-5.4%
	Average List Price	404,543	374,065	8.1%
	Median List Price	409,950	362,450	13.1%
Year-to-Date	New Listings	116	135	-14.1%
	Volume (1,000s)	43,646	49,268	-11.4%
	Average List Price	376,262	364,951	3.1%
	Median List Price	375,000	345,000	8.7%

A total of 42 new listings were added in Pottawatomie County during April, down 12.5% from the same month in 2024. Year-to-date Pottawatomie County has seen 116 new listings.

The median list price of these homes was \$409,950 up from \$362,450 in 2024.

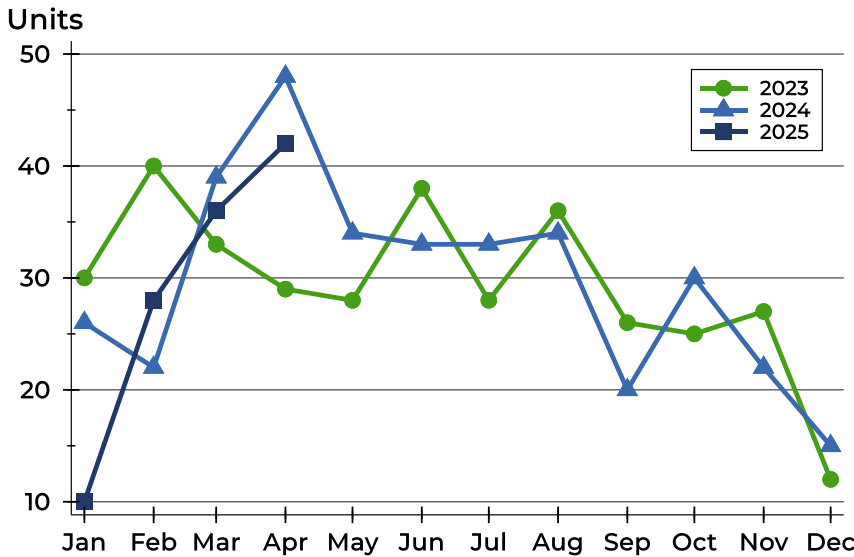
## History of New Listings





## Pottawatomie County New Listings Analysis

### New Listings by Month



Month	2023	2024	2025
January	30	26	10
February	40	22	28
March	33	39	36
April	29	48	42
May	28	34	
June	38	33	
July	28	33	
August	36	34	
September	26	20	
October	25	30	
November	27	22	
December	12	15	

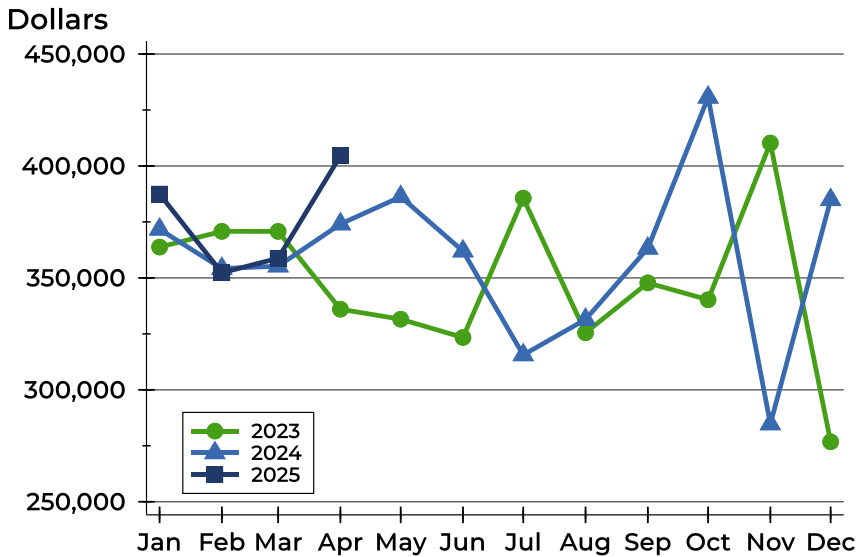
### New Listings by Price Range

Price Range	New Listings		List Price		Days on Market		Price as % of Orig.	
	Number	Percent	Average	Median	Avg.	Med.	Avg.	Med.
Below \$25,000	0	0.0%	N/A	N/A	N/A	N/A	N/A	N/A
\$25,000-\$49,999	0	0.0%	N/A	N/A	N/A	N/A	N/A	N/A
\$50,000-\$99,999	0	0.0%	N/A	N/A	N/A	N/A	N/A	N/A
\$100,000-\$124,999	0	0.0%	N/A	N/A	N/A	N/A	N/A	N/A
\$125,000-\$149,999	0	0.0%	N/A	N/A	N/A	N/A	N/A	N/A
\$150,000-\$174,999	0	0.0%	N/A	N/A	N/A	N/A	N/A	N/A
\$175,000-\$199,999	2	4.8%	177,000	177,000	3	3	100.0%	100.0%
\$200,000-\$249,999	2	4.8%	227,450	227,450	4	4	100.0%	100.0%
\$250,000-\$299,999	3	7.1%	289,500	288,500	22	29	98.9%	100.0%
\$300,000-\$399,999	12	28.6%	348,808	354,250	13	11	99.8%	100.0%
\$400,000-\$499,999	17	40.5%	439,629	435,000	16	12	99.5%	100.0%
\$500,000-\$749,999	5	11.9%	540,800	540,000	8	5	100.0%	100.0%
\$750,000-\$999,999	1	2.4%	950,000	950,000	15	15	100.0%	100.0%
\$1,000,000 and up	0	0.0%	N/A	N/A	N/A	N/A	N/A	N/A



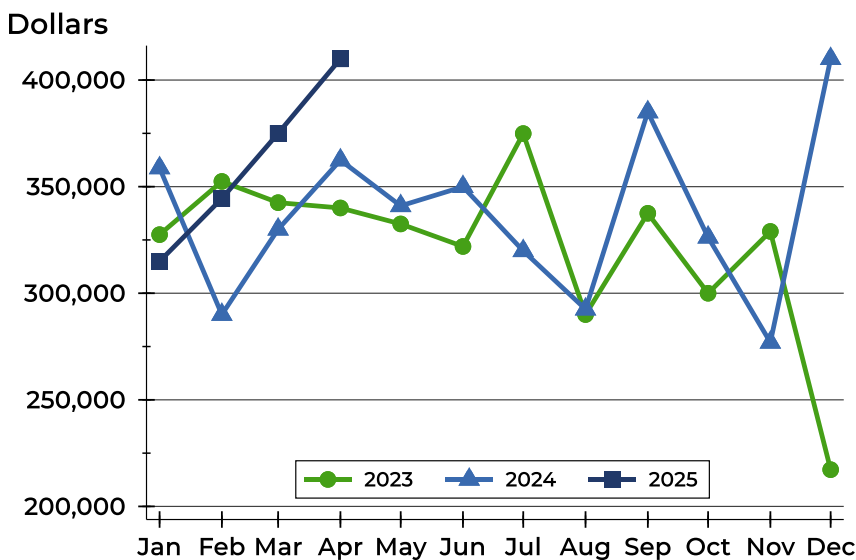
# Pottawatomie County New Listings Analysis

## Average Price



Month	2023	2024	2025
January	363,783	371,723	<b>387,460</b>
February	370,801	354,200	<b>352,291</b>
March	370,785	355,285	<b>358,800</b>
April	336,028	374,065	<b>404,543</b>
May	331,554	386,257	
June	323,391	361,974	
July	385,643	315,597	
August	325,497	331,443	
September	347,785	363,213	
October	340,256	430,667	
November	410,263	284,740	
December	276,792	384,893	

## Median Price



Month	2023	2024	2025
January	327,500	358,750	<b>314,950</b>
February	352,450	290,000	<b>344,450</b>
March	342,500	330,000	<b>375,000</b>
April	340,000	362,450	<b>409,950</b>
May	332,500	341,000	
June	321,950	349,950	
July	374,900	319,900	
August	290,000	292,500	
September	337,500	385,000	
October	300,000	326,250	
November	329,000	276,950	
December	217,250	410,000	



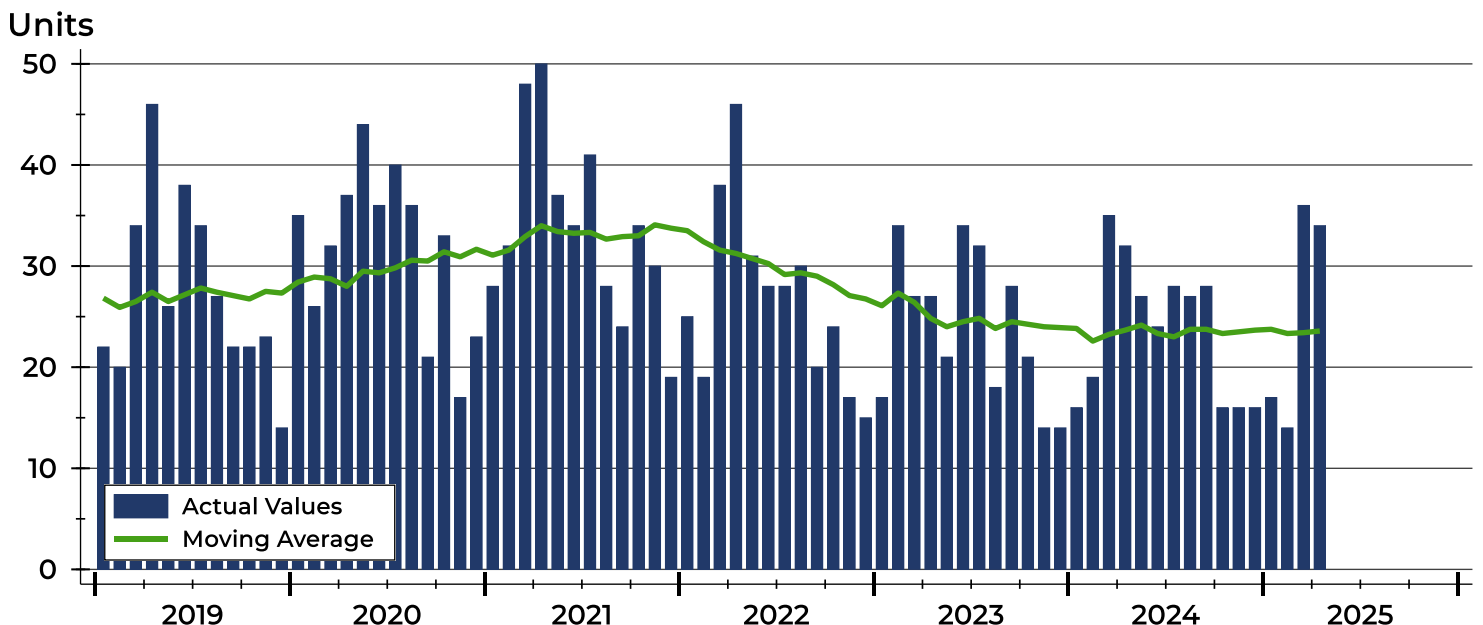
# Pottawatomie County Contracts Written Analysis

Summary Statistics for Contracts Written		2025	April 2024	Change	Year-to-Date		
		2025	2024		2025	2024	Change
Contracts Written		34	32	6.3%	101	102	-1.0%
Volume (1,000s)		12,715	11,723	8.5%	36,335	34,607	5.0%
Average	Sale Price	373,984	366,341	2.1%	359,751	339,282	6.0%
	Days on Market	18	23	-21.7%	33	43	-23.3%
	Percent of Original	99.5%	98.9%	0.6%	98.8%	98.1%	0.7%
Median	Sale Price	377,500	348,250	8.4%	355,000	320,000	10.9%
	Days on Market	9	11	-18.2%	13	14	-7.1%
	Percent of Original	100.0%	100.0%	0.0%	100.0%	99.5%	0.5%

A total of 34 contracts for sale were written in Pottawatomie County during the month of April, up from 32 in 2024. The median list price of these homes was \$377,500, up from \$348,250 the prior year.

Half of the homes that went under contract in April were on the market less than 9 days, compared to 11 days in April 2024.

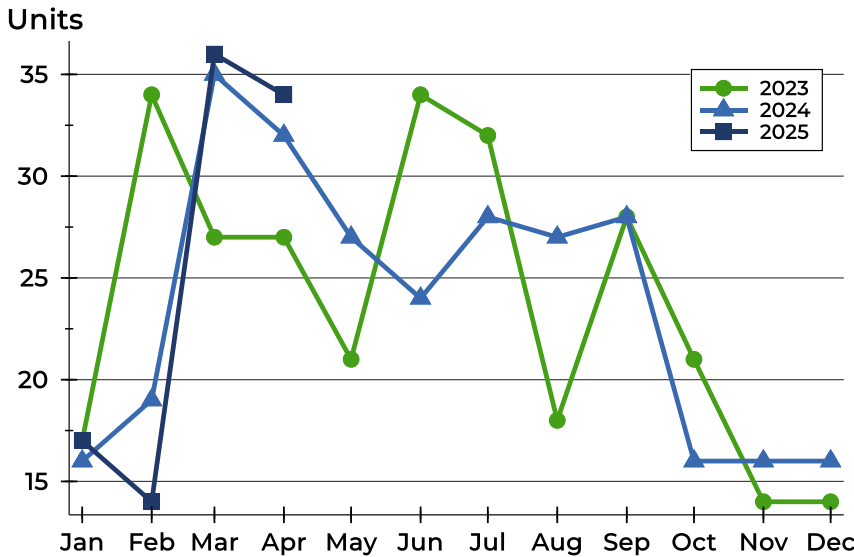
## History of Contracts Written





## Pottawatomie County Contracts Written Analysis

### Contracts Written by Month



Month	2023	2024	2025
January	17	16	<b>17</b>
February	34	19	<b>14</b>
March	27	35	<b>36</b>
April	27	32	<b>34</b>
May	21	27	
June	34	24	
July	32	28	
August	18	27	
September	28	28	
October	21	16	
November	14	16	
December	14	16	

### Contracts Written by Price Range

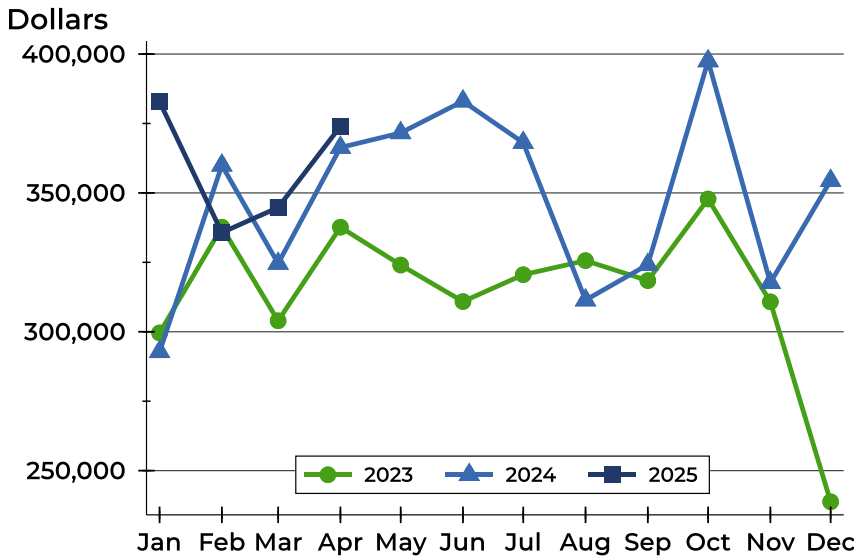
Price Range	Contracts Written		List Price		Days on Market		Price as % of Orig.	
	Number	Percent	Average	Median	Avg.	Med.	Avg.	Med.
Below \$25,000	1	2.9%	14,900	14,900	19	19	100.0%	100.0%
\$25,000-\$49,999	0	0.0%	N/A	N/A	N/A	N/A	N/A	N/A
\$50,000-\$99,999	0	0.0%	N/A	N/A	N/A	N/A	N/A	N/A
\$100,000-\$124,999	0	0.0%	N/A	N/A	N/A	N/A	N/A	N/A
\$125,000-\$149,999	0	0.0%	N/A	N/A	N/A	N/A	N/A	N/A
\$150,000-\$174,999	0	0.0%	N/A	N/A	N/A	N/A	N/A	N/A
\$175,000-\$199,999	2	5.9%	177,000	177,000	3	3	100.0%	100.0%
\$200,000-\$249,999	2	5.9%	233,700	233,700	9	9	100.0%	100.0%
\$250,000-\$299,999	3	8.8%	285,500	288,500	20	14	98.8%	100.0%
\$300,000-\$399,999	11	32.4%	352,168	365,000	21	10	99.0%	100.0%
\$400,000-\$499,999	11	32.4%	443,536	450,000	21	9	99.7%	100.0%
\$500,000-\$749,999	4	11.8%	567,475	542,500	14	5	100.0%	100.0%
\$750,000-\$999,999	0	0.0%	N/A	N/A	N/A	N/A	N/A	N/A
\$1,000,000 and up	0	0.0%	N/A	N/A	N/A	N/A	N/A	N/A





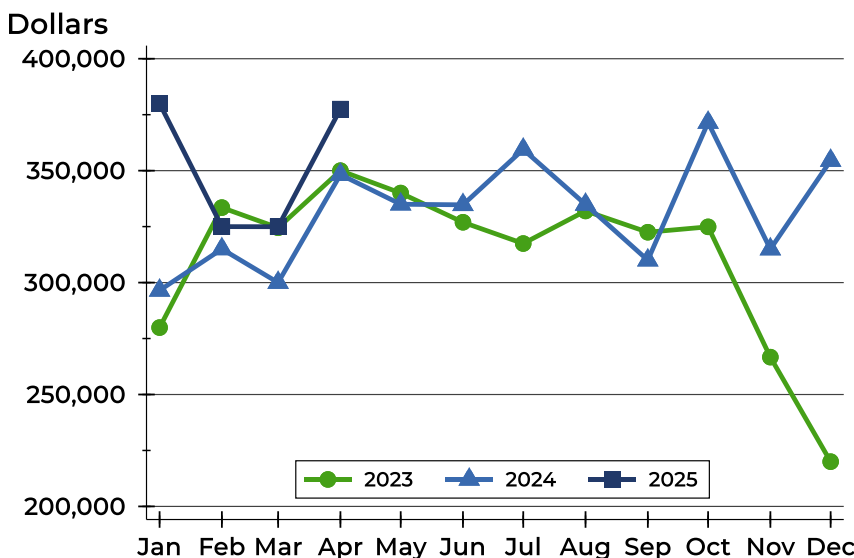
## Pottawatomie County Contracts Written Analysis

### Average Price



Month	2023	2024	2025
<b>January</b>	299,594	292,788	<b>382,859</b>
<b>February</b>	337,656	359,942	<b>335,721</b>
<b>March</b>	303,959	324,583	<b>344,743</b>
<b>April</b>	337,663	366,341	<b>373,984</b>
<b>May</b>	324,033	371,615	
<b>June</b>	310,883	383,033	
<b>July</b>	320,544	368,096	
<b>August</b>	325,628	311,400	
<b>September</b>	318,421	324,163	
<b>October</b>	347,819	397,509	
<b>November</b>	310,786	317,669	
<b>December</b>	238,786	354,426	

### Median Price

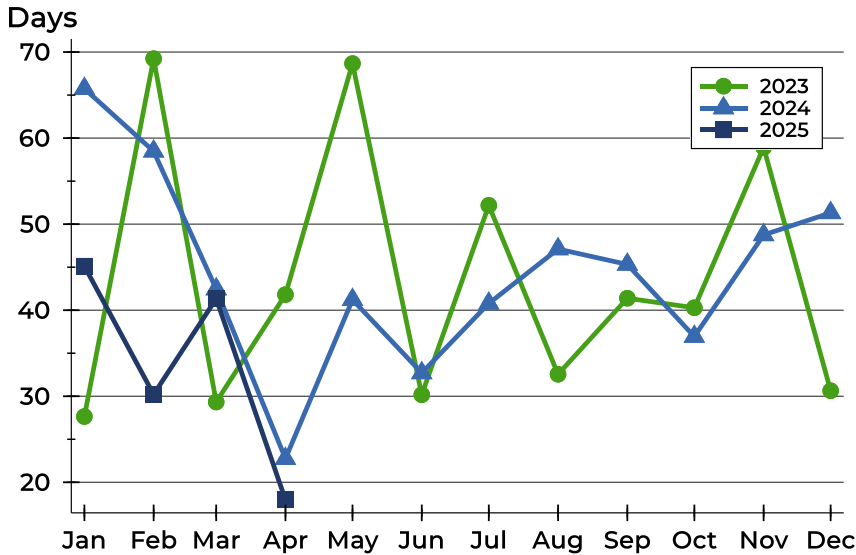


Month	2023	2024	2025
<b>January</b>	279,900	296,500	<b>380,000</b>
<b>February</b>	333,500	315,000	<b>325,000</b>
<b>March</b>	324,500	300,000	<b>324,950</b>
<b>April</b>	350,000	348,250	<b>377,500</b>
<b>May</b>	340,000	335,000	
<b>June</b>	326,950	334,750	
<b>July</b>	317,450	359,500	
<b>August</b>	332,000	334,900	
<b>September</b>	322,500	310,000	
<b>October</b>	324,900	371,500	
<b>November</b>	266,703	314,950	
<b>December</b>	220,000	354,500	



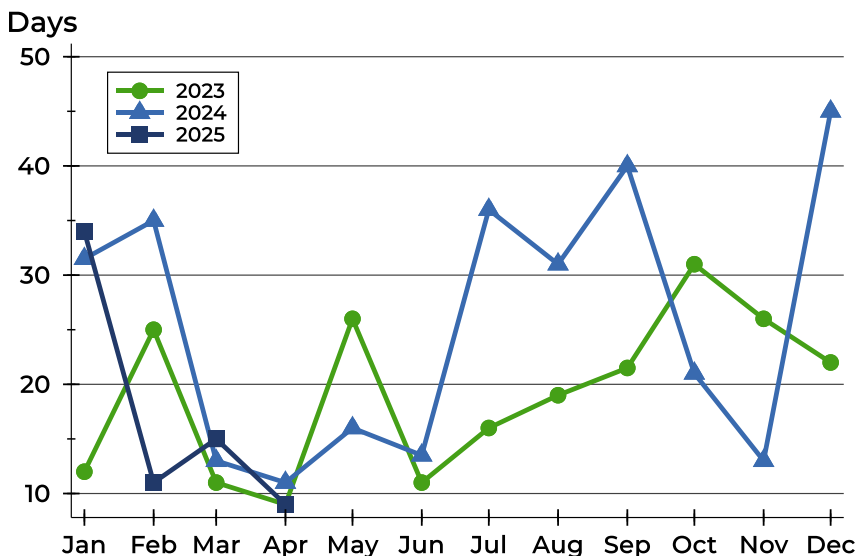
## Pottawatomie County Contracts Written Analysis

### Average DOM



Month	2023	2024	2025
January	28	66	<b>45</b>
February	69	58	<b>30</b>
March	29	42	<b>41</b>
April	42	23	<b>18</b>
May	69	41	
June	30	33	
July	52	41	
August	33	47	
September	41	45	
October	40	37	
November	59	49	
December	31	51	

### Median DOM



Month	2023	2024	2025
January	12	32	<b>34</b>
February	25	35	<b>11</b>
March	11	13	<b>15</b>
April	9	11	<b>9</b>
May	26	16	
June	11	14	
July	16	36	
August	19	31	
September	22	40	
October	31	21	
November	26	13	
December	22	45	



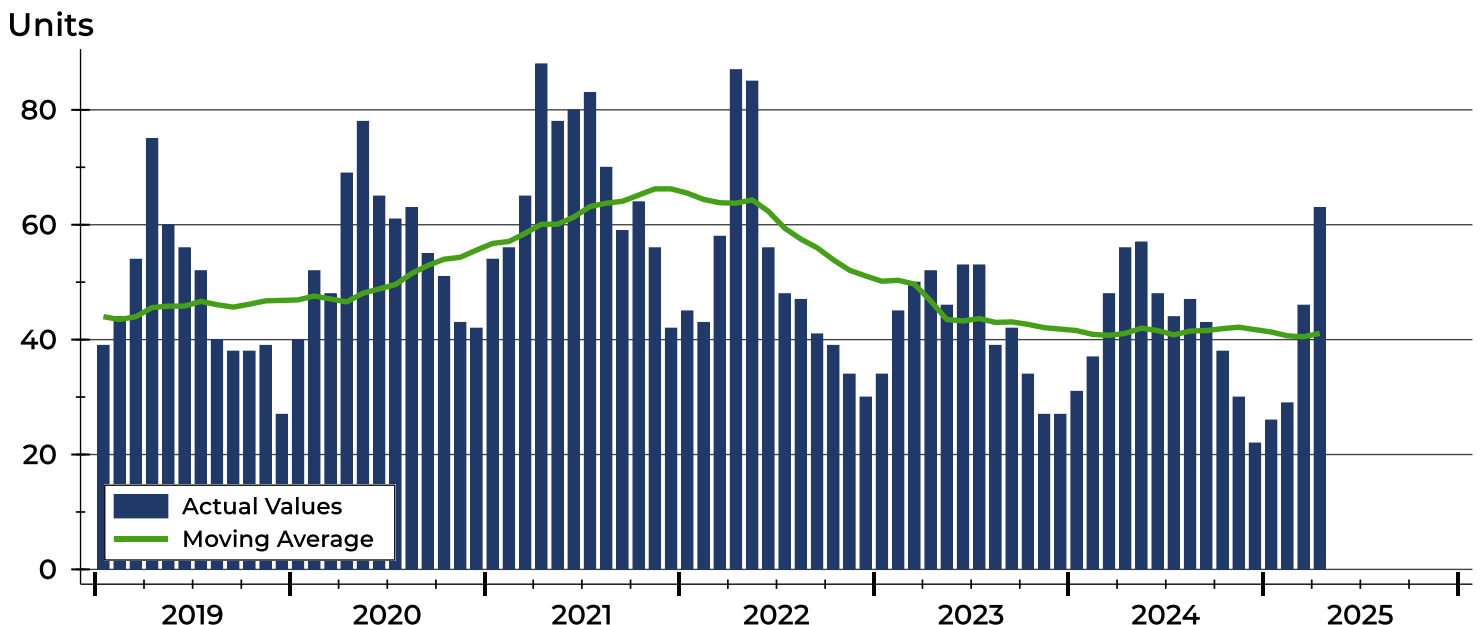
# Pottawatomie County Pending Contracts Analysis

Summary Statistics for Pending Contracts		2025	End of April 2024	Change
Pending Contracts		63	56	12.5%
Volume (1,000s)		22,019	19,240	14.4%
Average	List Price	349,502	343,570	1.7%
	Days on Market	26	31	-16.1%
	Percent of Original	99.7%	99.5%	0.2%
Median	List Price	349,000	317,000	10.1%
	Days on Market	12	14	-14.3%
	Percent of Original	100.0%	100.0%	0.0%

A total of 63 listings in Pottawatomie County had contracts pending at the end of April, up from 56 contracts pending at the end of April 2024.

Pending contracts reflect listings with a contract in place at the end of the month. In contrast, contracts written measures the number of listings put under contract during the month.

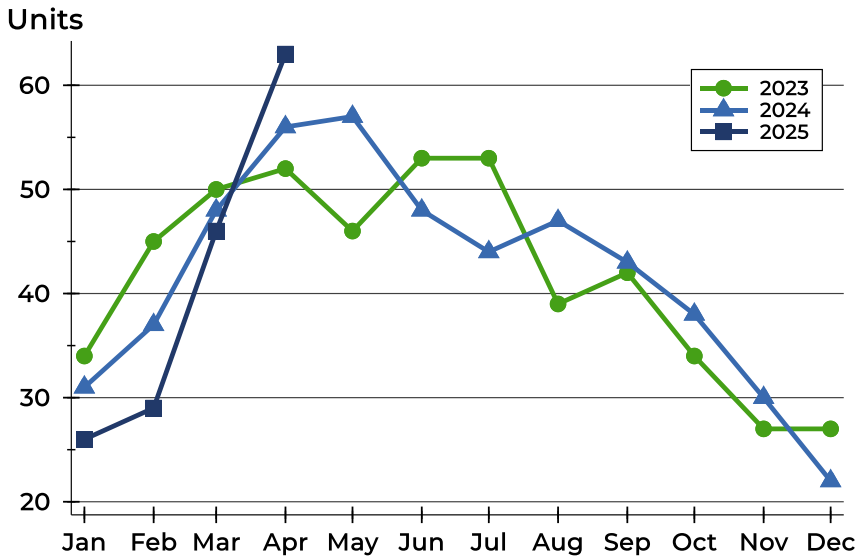
## History of Pending Contracts





## Pottawatomie County Pending Contracts Analysis

### Pending Contracts by Month



Month	2023	2024	2025
January	34	31	26
February	45	37	29
March	50	48	46
April	52	56	63
May	46	57	
June	53	48	
July	53	44	
August	39	47	
September	42	43	
October	34	38	
November	27	30	
December	27	22	

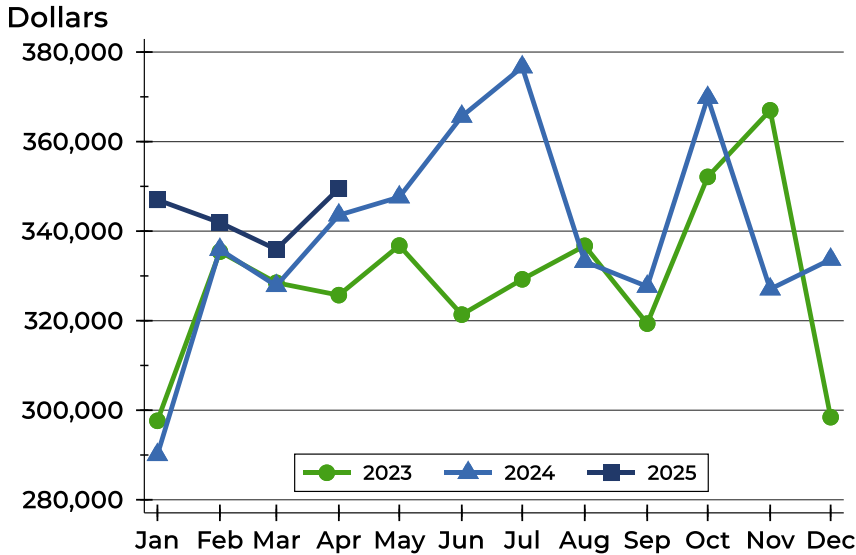
### Pending Contracts by Price Range

Price Range	Pending Contracts		List Price		Days on Market		Price as % of Orig.	
	Number	Percent	Average	Median	Avg.	Med.	Avg.	Med.
Below \$25,000	1	1.6%	14,900	14,900	19	19	100.0%	100.0%
\$25,000-\$49,999	0	0.0%	N/A	N/A	N/A	N/A	N/A	N/A
\$50,000-\$99,999	0	0.0%	N/A	N/A	N/A	N/A	N/A	N/A
\$100,000-\$124,999	0	0.0%	N/A	N/A	N/A	N/A	N/A	N/A
\$125,000-\$149,999	2	3.2%	137,375	137,375	45	45	96.5%	96.5%
\$150,000-\$174,999	0	0.0%	N/A	N/A	N/A	N/A	N/A	N/A
\$175,000-\$199,999	2	3.2%	177,000	177,000	3	3	100.0%	100.0%
\$200,000-\$249,999	7	11.1%	232,314	229,500	25	10	100.0%	100.0%
\$250,000-\$299,999	10	15.9%	277,640	277,000	19	17	102.5%	100.0%
\$300,000-\$399,999	21	33.3%	351,888	349,000	32	13	99.0%	100.0%
\$400,000-\$499,999	17	27.0%	442,518	435,000	18	9	99.6%	100.0%
\$500,000-\$749,999	2	3.2%	592,450	592,450	25	25	100.0%	100.0%
\$750,000-\$999,999	1	1.6%	875,000	875,000	148	148	92.1%	92.1%
\$1,000,000 and up	0	0.0%	N/A	N/A	N/A	N/A	N/A	N/A



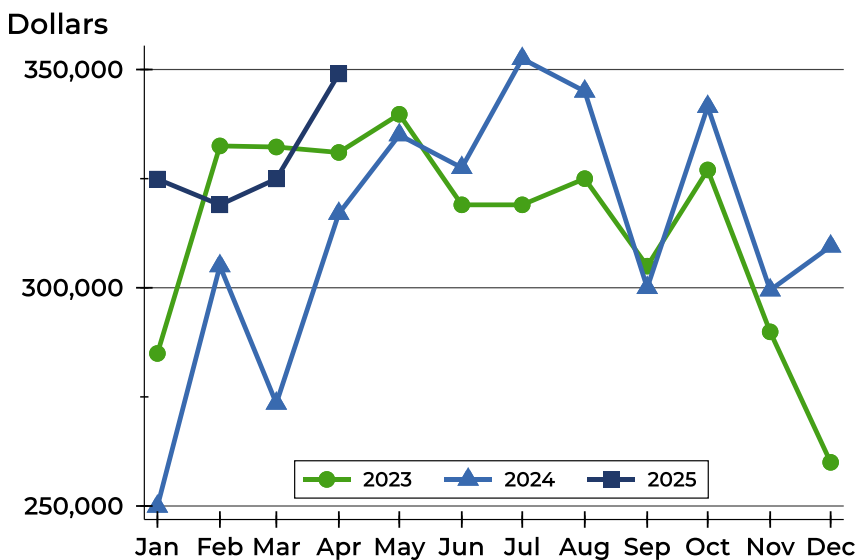
# Pottawatomie County Pending Contracts Analysis

## Average Price



Month	2023	2024	2025
January	297,634	290,045	<b>346,994</b>
February	335,418	335,886	<b>341,903</b>
March	328,472	327,794	<b>335,925</b>
April	325,708	343,570	<b>349,502</b>
May	336,778	347,611	
June	321,353	365,630	
July	329,236	376,651	
August	336,728	333,200	
September	319,350	327,636	
October	352,121	369,818	
November	366,993	327,047	
December	298,444	333,680	

## Median Price

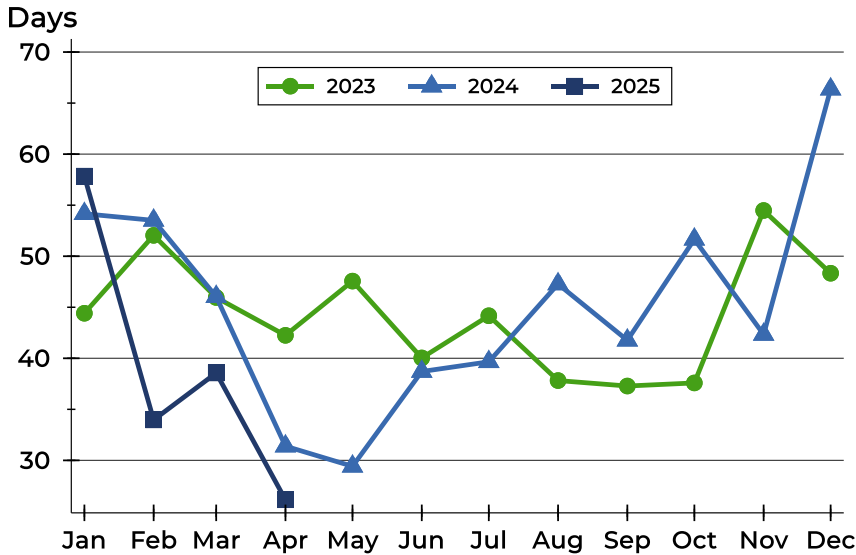


Month	2023	2024	2025
January	284,950	249,900	<b>324,900</b>
February	332,500	305,000	<b>319,000</b>
March	332,250	273,500	<b>324,950</b>
April	331,000	317,000	<b>349,000</b>
May	339,750	335,000	
June	319,000	327,500	
July	319,000	352,475	
August	325,000	345,000	
September	304,950	300,000	
October	327,000	341,500	
November	289,900	299,450	
December	260,000	309,500	



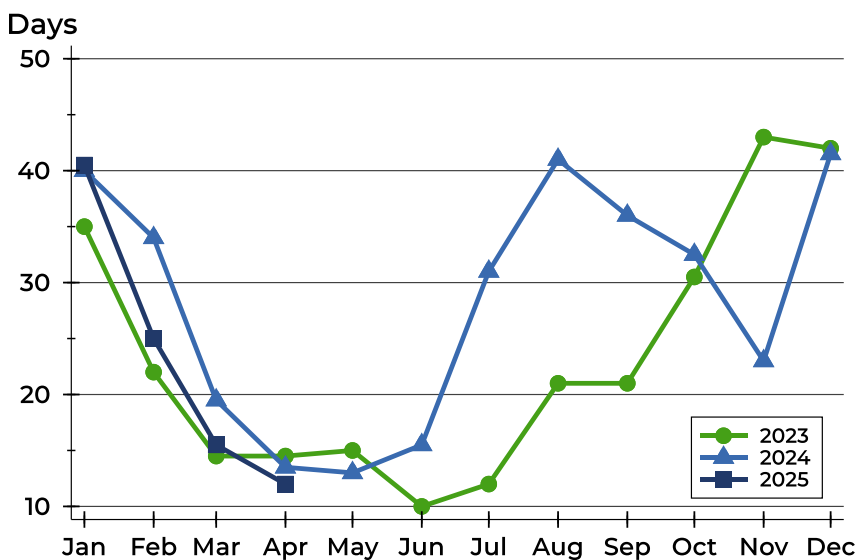
# Pottawatomie County Pending Contracts Analysis

## Average DOM



Month	2023	2024	2025
January	44	54	<b>58</b>
February	52	54	<b>34</b>
March	46	46	<b>39</b>
April	42	31	<b>26</b>
May	48	29	
June	40	39	
July	44	40	
August	38	47	
September	37	42	
October	38	52	
November	54	42	
December	48	66	

## Median DOM



Month	2023	2024	2025
January	35	40	<b>41</b>
February	22	34	<b>25</b>
March	15	20	<b>16</b>
April	15	14	<b>12</b>
May	15	13	
June	10	16	
July	12	31	
August	21	41	
September	21	36	
October	31	33	
November	43	23	
December	42	42	