



**January
2026**

Flint Hills MLS Statistics



**FLINT HILLS
ASSOCIATION
OF REALTORS®**

Pottawatomie County Housing Report



Market Overview

Pottawatomie County Home Sales Fell in January

Total home sales in Pottawatomie County fell last month to 13 units, compared to 16 units in January 2025. Total sales volume was \$4.5 million, down from a year earlier.

The median sale price in January was \$359,000, up from \$349,500 a year earlier. Homes that sold in January were typically on the market for 55 days and sold for 98.7% of their list prices.

Pottawatomie County Active Listings Up at End of January

The total number of active listings in Pottawatomie County at the end of January was 34 units, up from 27 at the same point in 2025. This represents a 1.5 months' supply of homes available for sale. The median list price of homes on the market at the end of January was \$365,000.

During January, a total of 20 contracts were written up from 17 in January 2025. At the end of the month, there were 27 contracts still pending.

Report Contents

- Summary Statistics – Page 2
- Closed Listing Analysis – Page 3
- Active Listings Analysis – Page 7
- Months' Supply Analysis – Page 11
- New Listings Analysis – Page 12
- Contracts Written Analysis – Page 15
- Pending Contracts Analysis – Page 19

Contact Information

Margaret Pendleton, Association Executive
 Flint Hills Association of REALTORS®
 205 S. Seth Child Road
 Manhattan, KS 66502
 785-776-1203
ae@flinthillsrealtors.net
www.flinthillsrealtors.net



**January
2026**

Flint Hills MLS Statistics



Pottawatomie County Summary Statistics

January MLS Statistics Three-year History		Current Month			Year-to-Date		
		2026	2025	2024	2026	2025	2024
Home Sales Change from prior year		13 -18.8%	16 14.3%	14 -6.7%	13 -18.8%	16 14.3%	14 -6.7%
Active Listings Change from prior year		34 25.9%	27 -30.8%	39 -25.0%	N/A	N/A	N/A
Months' Supply Change from prior year		1.5 36.4%	1.1 -31.3%	1.6 -15.8%	N/A	N/A	N/A
New Listings Change from prior year		22 100.0%	11 -63.3%	30 -3.2%	22 100.0%	11 -63.3%	30 -3.2%
Contracts Written Change from prior year		20 17.6%	17 6.3%	16 -5.9%	20 17.6%	17 6.3%	16 -5.9%
Pending Contracts Change from prior year		27 28.6%	21 -19.2%	26 -10.3%	N/A	N/A	N/A
Sales Volume (1,000s) Change from prior year		4,480 -23.1%	5,827 54.0%	3,784 -27.4%	4,480 -23.1%	5,827 54.0%	3,784 -27.4%
Average	Sale Price Change from prior year	344,592 -5.4%	364,181 34.7%	270,281 -22.2%	344,592 -5.4%	364,181 34.7%	270,281 -22.2%
	List Price of Actives Change from prior year	387,415 -11.5%	437,624 0.7%	434,659 20.3%	N/A	N/A	N/A
	Days on Market Change from prior year	50 -2.0%	51 -3.8%	53 -14.5%	50 -2.0%	51 -3.8%	53 -14.5%
	Percent of List Change from prior year	96.0% -1.7%	97.7% -1.1%	98.8% 0.4%	96.0% -1.7%	97.7% -1.1%	98.8% 0.4%
	Percent of Original Change from prior year	93.0% -3.6%	96.5% 0.8%	95.7% 1.6%	93.0% -3.6%	96.5% 0.8%	95.7% 1.6%
Median	Sale Price Change from prior year	359,000 2.7%	349,500 39.8%	250,000 -20.6%	359,000 2.7%	349,500 39.8%	250,000 -20.6%
	List Price of Actives Change from prior year	365,000 16.8%	312,500 -18.8%	385,000 1.3%	N/A	N/A	N/A
	Days on Market Change from prior year	55 10.0%	50 35.1%	37 68.2%	55 10.0%	50 35.1%	37 68.2%
	Percent of List Change from prior year	98.7% 0.2%	98.5% -1.0%	99.5% -0.5%	98.7% 0.2%	98.5% -1.0%	99.5% -0.5%
	Percent of Original Change from prior year	98.4% 1.2%	97.2% 0.4%	96.8% -1.8%	98.4% 1.2%	97.2% 0.4%	96.8% -1.8%

Note: Year-to-date statistics cannot be calculated for Active Listings, Months' Supply and Pending Contracts.



**January
2026**

Flint Hills MLS Statistics



**FLINT HILLS
ASSOCIATION
OF REALTORS®**

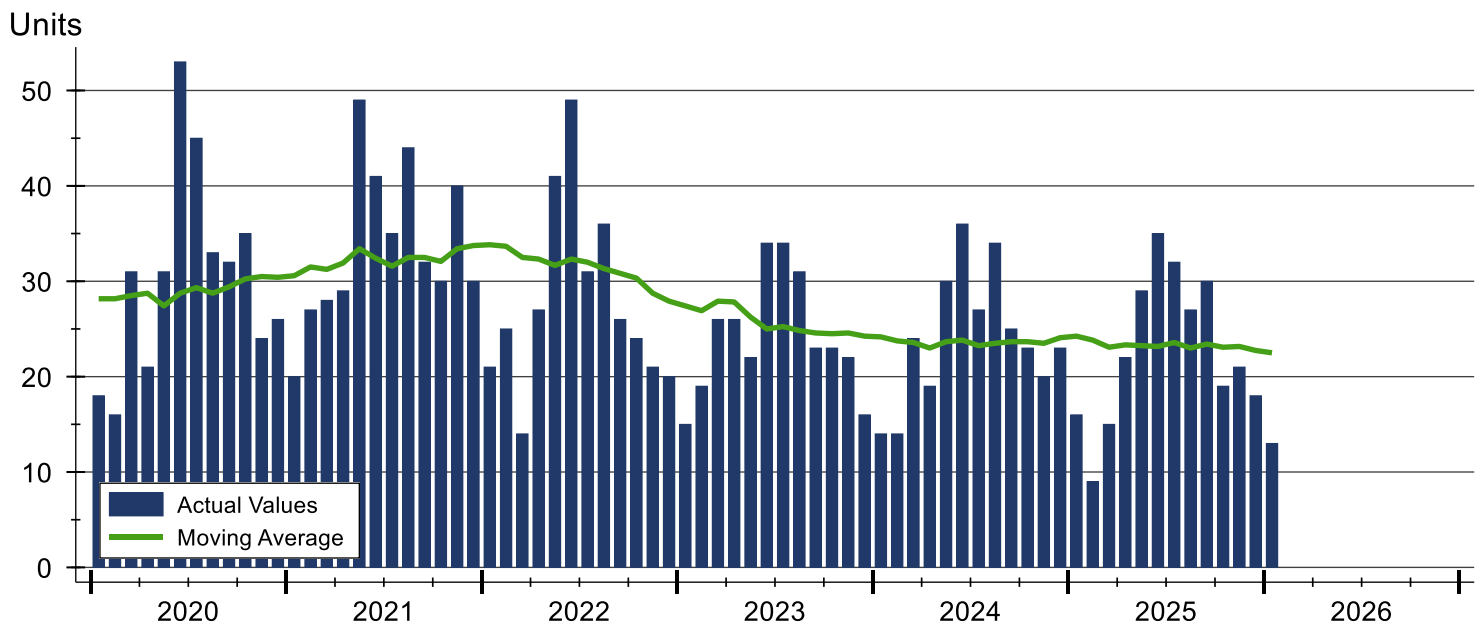
Pottawatomie County Closed Listings Analysis

Summary Statistics for Closed Listings		2026	January 2025	Change	2026	Year-to-Date 2025	Change
Closed Listings		13	16	-18.8%	13	16	-18.8%
Volume (1,000s)		4,480	5,827	-23.1%	4,480	5,827	-23.1%
Months' Supply		1.5	1.1	36.4%	N/A	N/A	N/A
Average	Sale Price	344,592	364,181	-5.4%	344,592	364,181	-5.4%
	Days on Market	50	51	-2.0%	50	51	-2.0%
	Percent of List	96.0%	97.7%	-1.7%	96.0%	97.7%	-1.7%
	Percent of Original	93.0%	96.5%	-3.6%	93.0%	96.5%	-3.6%
Median	Sale Price	359,000	349,500	2.7%	359,000	349,500	2.7%
	Days on Market	55	50	10.0%	55	50	10.0%
	Percent of List	98.7%	98.5%	0.2%	98.7%	98.5%	0.2%
	Percent of Original	98.4%	97.2%	1.2%	98.4%	97.2%	1.2%

A total of 13 homes sold in Pottawatomie County in January, down from 16 units in January 2025. Total sales volume fell to \$4.5 million compared to \$5.8 million in the previous year.

The median sales price in January was \$359,000, up 2.7% compared to the prior year. Median days on market was 55 days, up from 31 days in December, and up from 50 in January 2025.

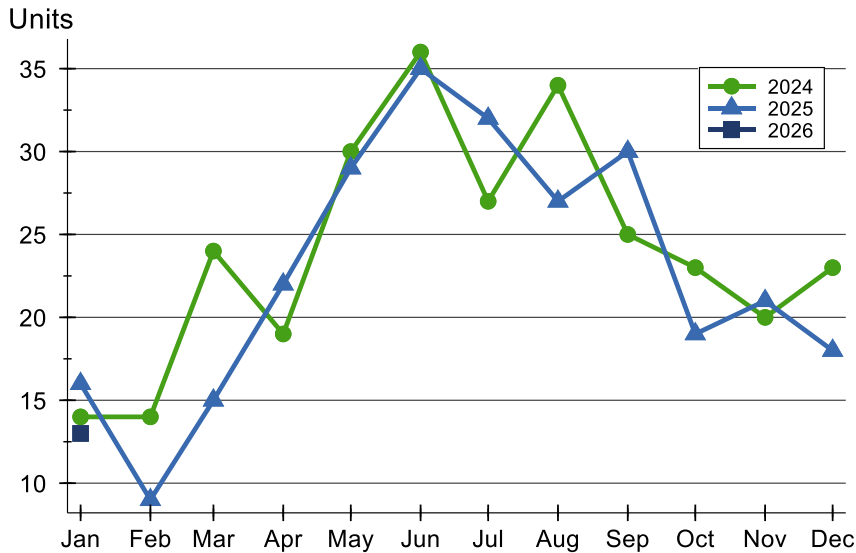
History of Closed Listings





Pottawatomie County Closed Listings Analysis

Closed Listings by Month



Month	2024	2025	2026
January	14	16	13
February	14	9	
March	24	15	
April	19	22	
May	30	29	
June	36	35	
July	27	32	
August	34	27	
September	25	30	
October	23	19	
November	20	21	
December	23	18	

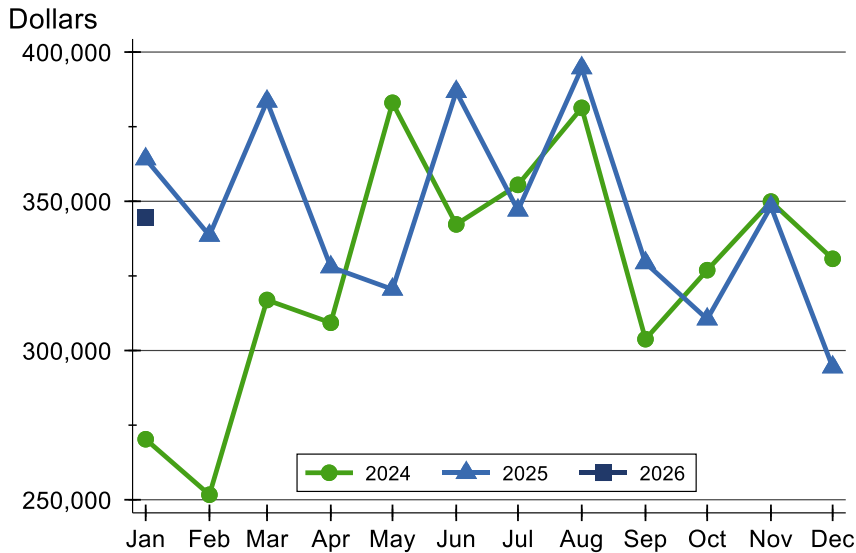
Closed Listings by Price Range

Price Range	Sales Number	Percent	Months' Supply	Sale Price Average	Median	Days on Market Avg.	Med.	Price as % of List Avg.	Med.	Price as % of Orig. Avg.	Med.
Below \$25,000	0	0.0%	N/A	N/A	N/A	N/A	N/A	N/A	N/A	N/A	N/A
\$25,000-\$49,999	0	0.0%	N/A	N/A	N/A	N/A	N/A	N/A	N/A	N/A	N/A
\$50,000-\$99,999	0	0.0%	N/A	N/A	N/A	N/A	N/A	N/A	N/A	N/A	N/A
\$100,000-\$124,999	2	15.4%	0.0	100,000	100,000	109	109	80.4%	80.4%	66.7%	66.7%
\$125,000-\$149,999	0	0.0%	N/A	N/A	N/A	N/A	N/A	N/A	N/A	N/A	N/A
\$150,000-\$174,999	0	0.0%	N/A	N/A	N/A	N/A	N/A	N/A	N/A	N/A	N/A
\$175,000-\$199,999	0	0.0%	N/A	N/A	N/A	N/A	N/A	N/A	N/A	N/A	N/A
\$200,000-\$249,999	1	7.7%	0.9	216,200	216,200	59	59	100.6%	100.6%	100.6%	100.6%
\$250,000-\$299,999	2	15.4%	1.2	276,500	276,500	27	27	99.6%	99.6%	98.1%	98.1%
\$300,000-\$399,999	4	30.8%	1.3	365,250	372,000	49	57	97.9%	98.5%	97.9%	98.5%
\$400,000-\$499,999	3	23.1%	1.7	442,167	438,000	38	55	98.5%	97.4%	95.5%	94.2%
\$500,000-\$749,999	1	7.7%	3.2	723,000	723,000	2	2	100.4%	100.4%	100.4%	100.4%
\$750,000-\$999,999	0	0.0%	N/A	N/A	N/A	N/A	N/A	N/A	N/A	N/A	N/A
\$1,000,000 and up	0	0.0%	N/A	N/A	N/A	N/A	N/A	N/A	N/A	N/A	N/A



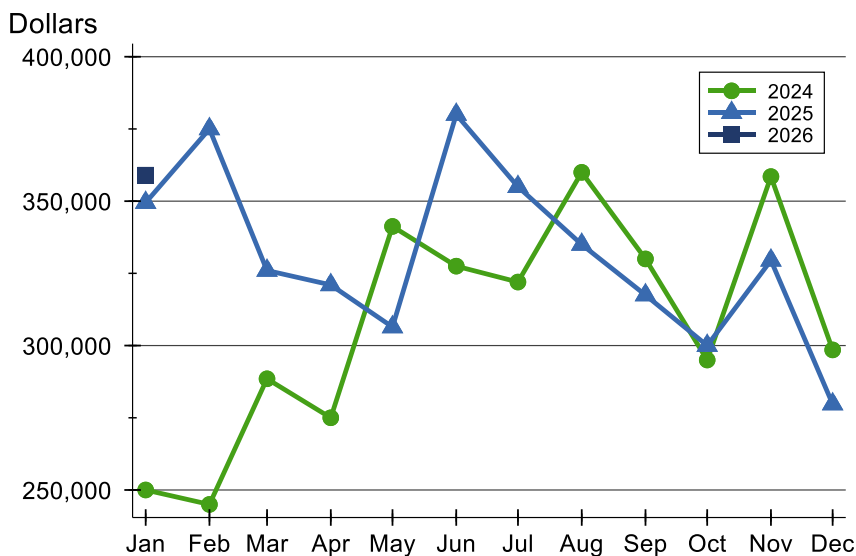
Pottawatomie County Closed Listings Analysis

Average Price



Month	2024	2025	2026
January	270,281	364,181	344,592
February	251,689	338,544	
March	316,938	383,500	
April	309,311	327,993	
May	383,004	320,503	
June	342,261	386,738	
July	355,507	346,994	
August	381,306	394,678	
September	303,804	329,360	
October	326,926	310,514	
November	349,902	348,233	
December	330,731	294,451	

Median Price

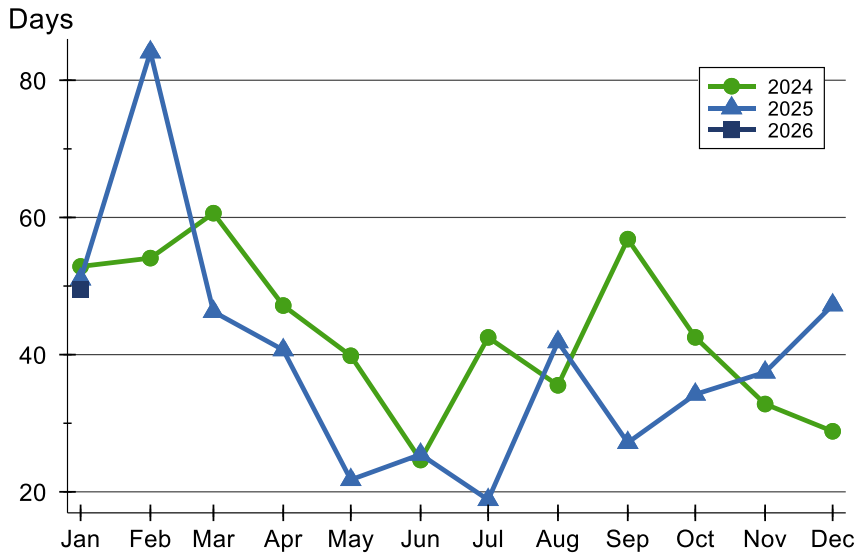


Month	2024	2025	2026
January	250,000	349,500	359,000
February	245,000	375,000	
March	288,500	326,000	
April	275,000	321,000	
May	341,250	306,425	
June	327,500	380,000	
July	322,000	355,000	
August	359,975	335,000	
September	330,000	317,500	
October	295,000	300,000	
November	358,500	329,500	
December	298,500	279,750	



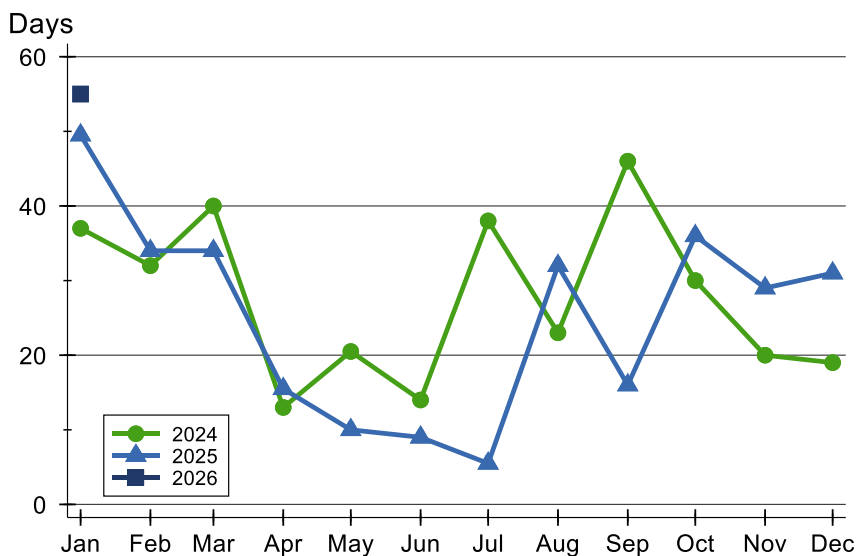
Pottawatomie County Closed Listings Analysis

Average DOM



Month	2024	2025	2026
January	53	51	50
February	54	84	
March	61	46	
April	47	41	
May	40	22	
June	25	25	
July	43	19	
August	36	42	
September	57	27	
October	43	34	
November	33	37	
December	29	47	

Median DOM



Month	2024	2025	2026
January	37	50	55
February	32	34	
March	40	34	
April	13	16	
May	21	10	
June	14	9	
July	38	6	
August	23	32	
September	46	16	
October	30	36	
November	20	29	
December	19	31	



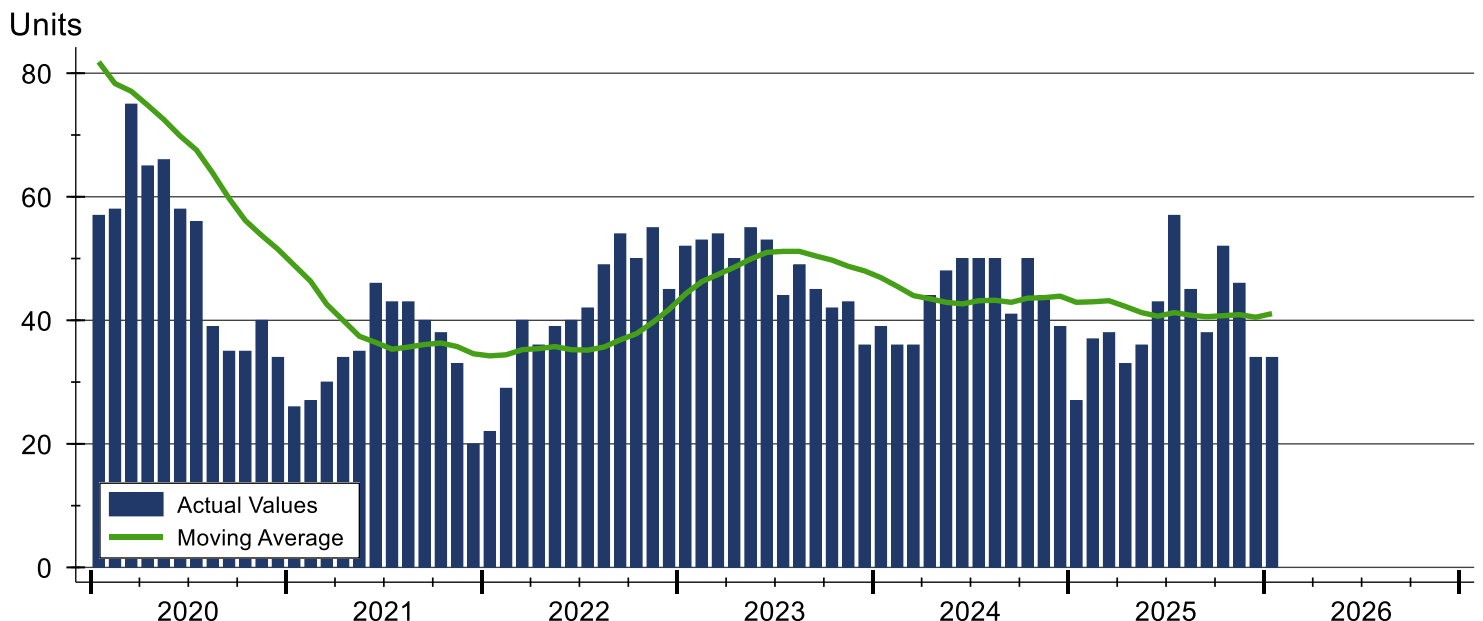
Pottawatomie County Active Listings Analysis

Summary Statistics for Active Listings		2026	End of January 2025	Change
Active Listings		34	27	25.9%
Volume (1,000s)		13,172	11,816	11.5%
Months' Supply		1.5	1.1	36.4%
Average	List Price	387,415	437,624	-11.5%
	Days on Market	57	85	-32.9%
	Percent of Original	98.4%	97.8%	0.6%
Median	List Price	365,000	312,500	16.8%
	Days on Market	25	70	-64.3%
	Percent of Original	100.0%	100.0%	0.0%

A total of 34 homes were available for sale in Pottawatomie County at the end of January. This represents a 1.5 months' supply of active listings.

The median list price of homes on the market at the end of January was \$365,000, up 16.8% from 2025. The typical time on market for active listings was 24 days, down from 70 days a year earlier.

History of Active Listings





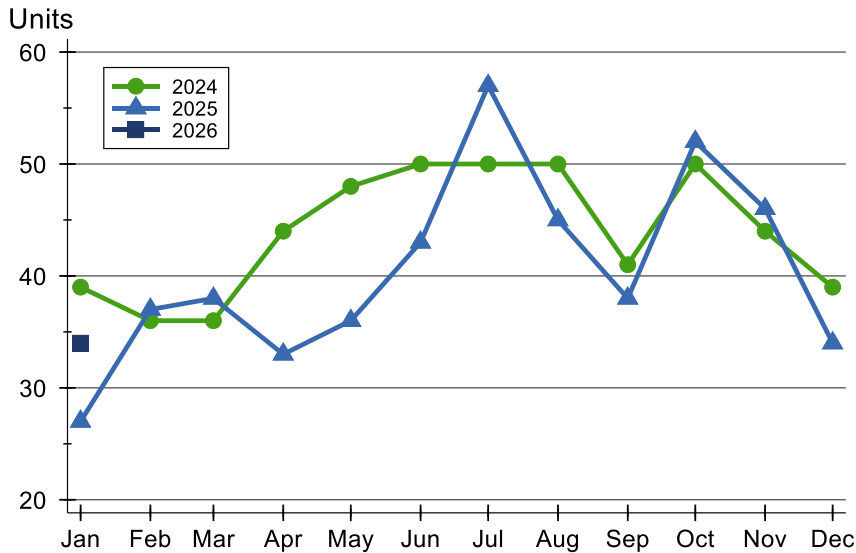
**January
2026**

Flint Hills MLS Statistics



Pottawatomie County Active Listings Analysis

Active Listings by Month



Month	2024	2025	2026
January	39	27	34
February	36	37	
March	36	38	
April	44	33	
May	48	36	
June	50	43	
July	50	57	
August	50	45	
September	41	38	
October	50	52	
November	44	46	
December	39	34	

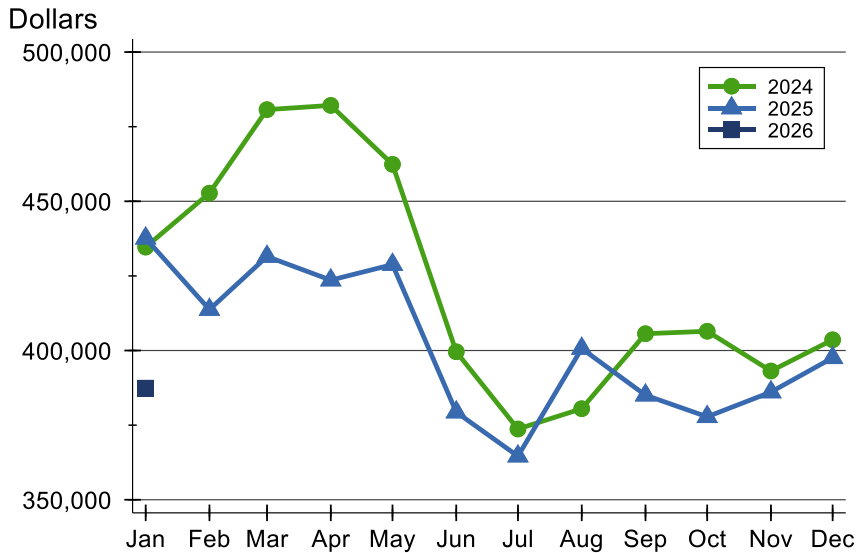
Active Listings by Price Range

Price Range	Active Listings Number	Percent	Months' Supply	List Price Average	Median	Days on Market Avg.	Med.	Price as % of Orig. Avg.	Med.
Below \$25,000	0	0.0%	N/A	N/A	N/A	N/A	N/A	N/A	N/A
\$25,000-\$49,999	0	0.0%	N/A	N/A	N/A	N/A	N/A	N/A	N/A
\$50,000-\$99,999	1	2.9%	N/A	74,900	74,900	164	164	83.3%	83.3%
\$100,000-\$124,999	0	0.0%	0.0	N/A	N/A	N/A	N/A	N/A	N/A
\$125,000-\$149,999	1	2.9%	N/A	135,000	135,000	27	27	100.0%	100.0%
\$150,000-\$174,999	2	5.9%	N/A	167,450	167,450	12	12	100.0%	100.0%
\$175,000-\$199,999	0	0.0%	N/A	N/A	N/A	N/A	N/A	N/A	N/A
\$200,000-\$249,999	2	5.9%	0.9	232,500	232,500	92	92	96.8%	96.8%
\$250,000-\$299,999	4	11.8%	1.2	282,825	288,200	59	55	98.7%	98.6%
\$300,000-\$399,999	10	29.4%	1.3	347,630	343,700	58	12	99.8%	100.0%
\$400,000-\$499,999	8	23.5%	1.7	449,363	449,000	61	62	98.2%	99.3%
\$500,000-\$749,999	5	14.7%	3.2	641,960	650,000	47	6	98.0%	100.0%
\$750,000-\$999,999	1	2.9%	N/A	750,000	750,000	5	5	100.0%	100.0%
\$1,000,000 and up	0	0.0%	N/A	N/A	N/A	N/A	N/A	N/A	N/A



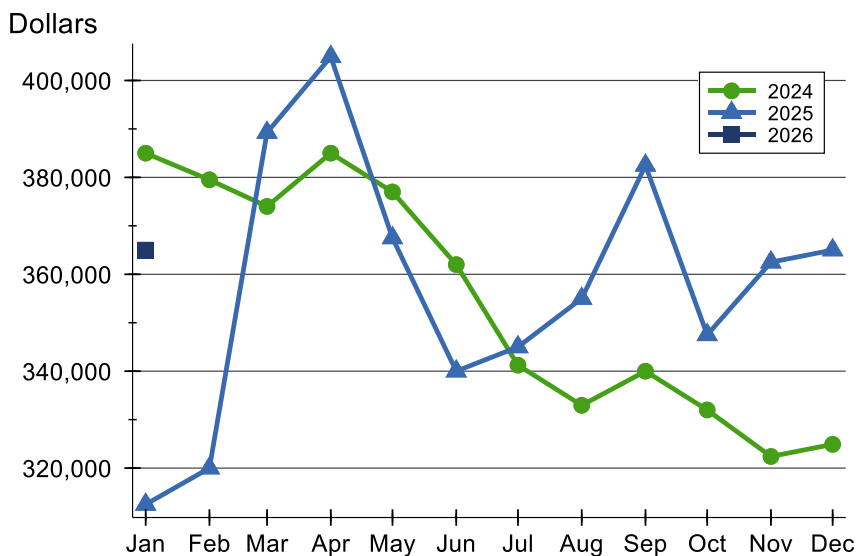
Pottawatomie County Active Listings Analysis

Average Price



Month	2024	2025	2026
January	434,659	437,624	387,415
February	452,747	413,734	
March	480,714	431,498	
April	482,127	423,592	
May	462,386	428,804	
June	399,586	379,366	
July	373,705	364,618	
August	380,508	400,684	
September	405,635	385,046	
October	406,458	377,808	
November	393,149	386,098	
December	403,595	397,565	

Median Price

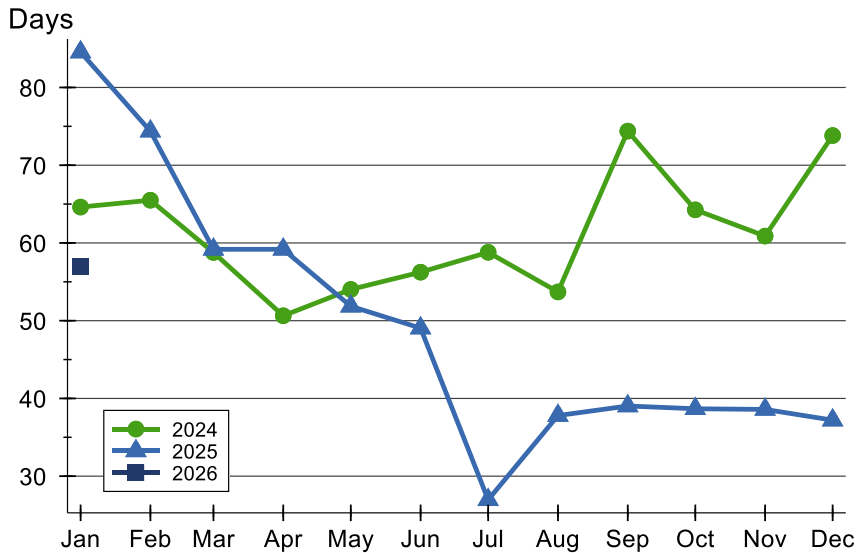


Month	2024	2025	2026
January	385,000	312,500	365,000
February	379,500	320,000	
March	374,000	389,250	
April	385,000	404,900	
May	377,000	367,500	
June	362,000	340,000	
July	341,250	345,000	
August	332,950	355,000	
September	340,000	382,475	
October	332,000	347,500	
November	322,400	362,500	
December	324,900	365,000	



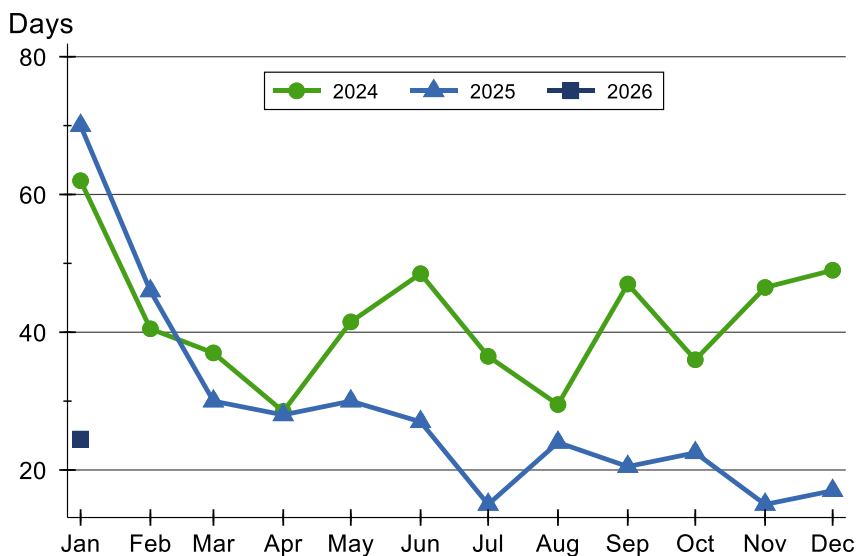
Pottawatomie County Active Listings Analysis

Average DOM



Month	2024	2025	2026
January	65	85	57
February	66	74	
March	59	59	
April	51	59	
May	54	52	
June	56	49	
July	59	27	
August	54	38	
September	74	39	
October	64	39	
November	61	39	
December	74	37	

Median DOM

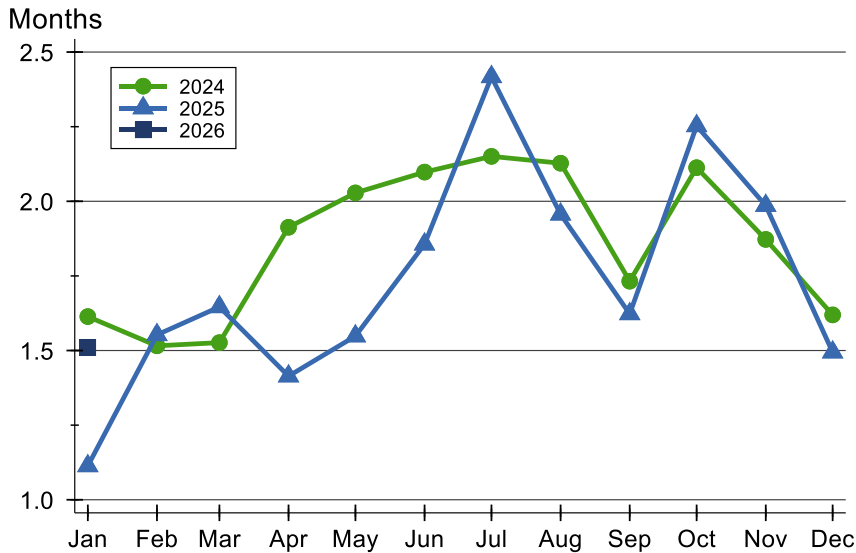


Month	2024	2025	2026
January	62	70	25
February	41	46	
March	37	30	
April	29	28	
May	42	30	
June	49	27	
July	37	15	
August	30	24	
September	47	21	
October	36	23	
November	47	15	
December	49	17	



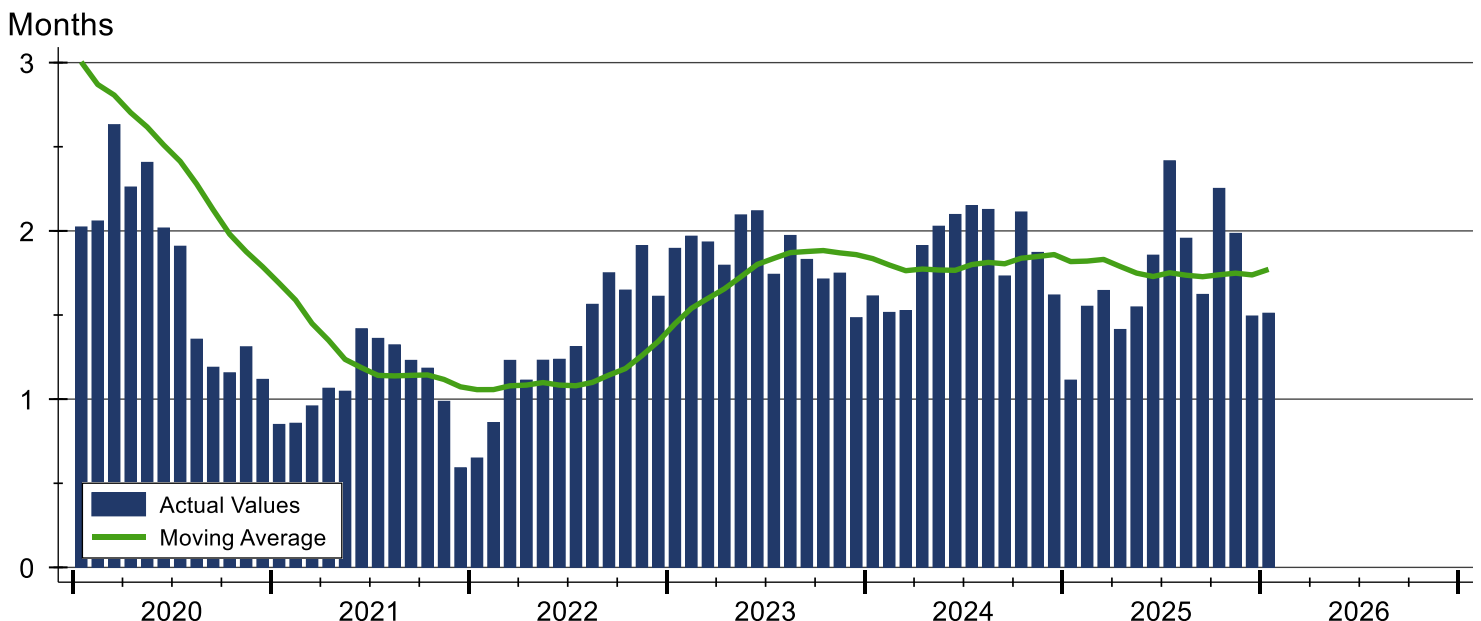
Pottawatomie County Months' Supply Analysis

Months' Supply by Month



Month	2024	2025	2026
January	1.6	1.1	1.5
February	1.5	1.6	
March	1.5	1.6	
April	1.9	1.4	
May	2.0	1.5	
June	2.1	1.9	
July	2.2	2.4	
August	2.1	2.0	
September	1.7	1.6	
October	2.1	2.3	
November	1.9	2.0	
December	1.6	1.5	

History of Month's Supply





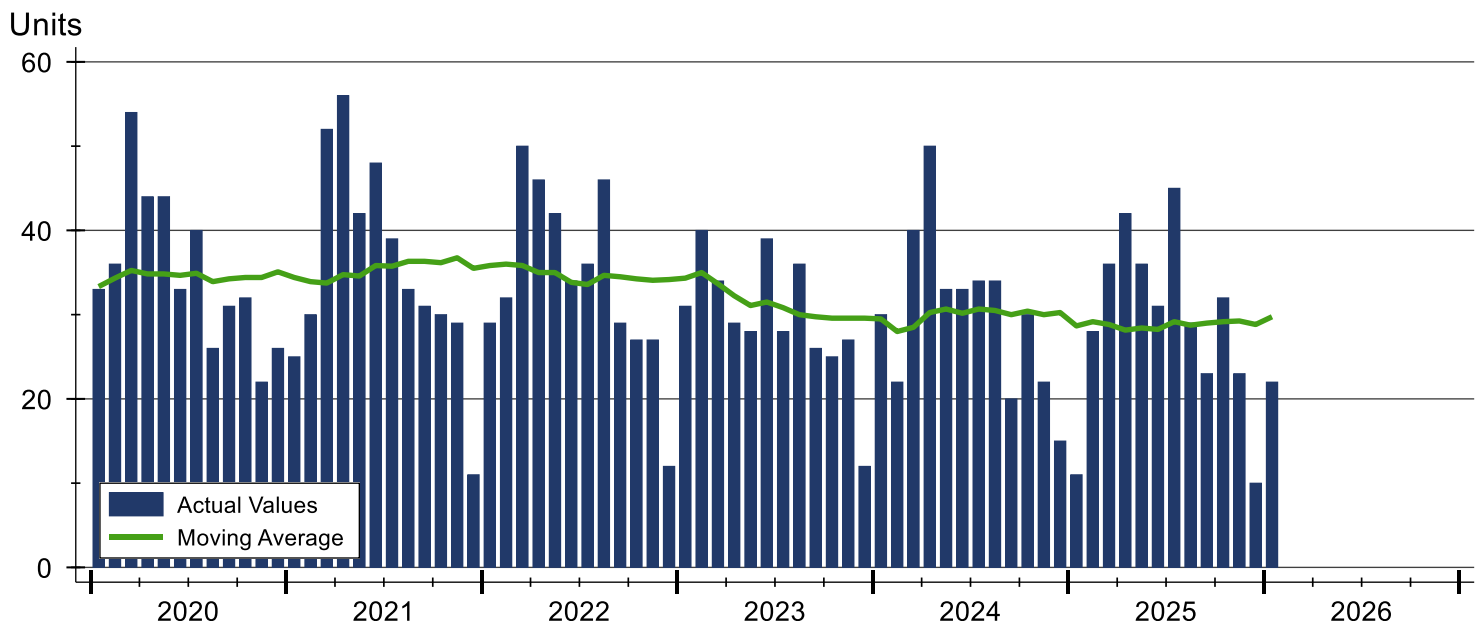
Pottawatomie County New Listings Analysis

Summary Statistics for New Listings		2026	January 2025	Change
Current Month	New Listings	22	11	100.0%
	Volume (1,000s)	7,071	4,217	67.7%
	Average List Price	321,423	383,373	-16.2%
	Median List Price	330,000	329,900	0.0%
Year-to-Date	New Listings	22	11	100.0%
	Volume (1,000s)	7,071	4,217	67.7%
	Average List Price	321,423	383,373	-16.2%
	Median List Price	330,000	329,900	0.0%

A total of 22 new listings were added in Pottawatomie County during January, up 100.0% from the same month in 2025.

The median list price of these homes was \$330,000 up from \$329,900 in 2025.

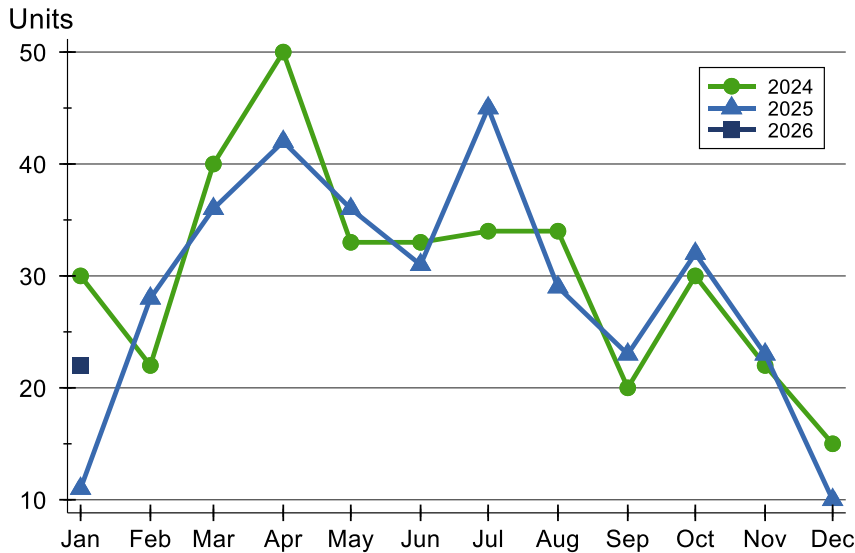
History of New Listings





Pottawatomie County New Listings Analysis

New Listings by Month



Month	2024	2025	2026
January	30	11	22
February	22	28	
March	40	36	
April	50	42	
May	33	36	
June	33	31	
July	34	45	
August	34	29	
September	20	23	
October	30	32	
November	22	23	
December	15	10	

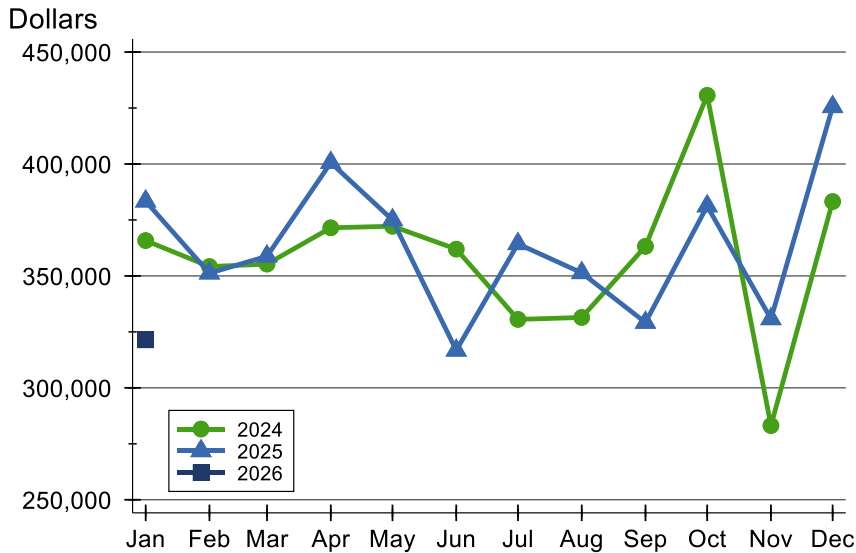
New Listings by Price Range

Price Range	New Listings Number	Percent	List Price Average	Median	Days on Market Avg.	Med.	Price as % of Orig. Avg.	Med.
Below \$25,000	0	0.0%	N/A	N/A	N/A	N/A	N/A	N/A
\$25,000-\$49,999	0	0.0%	N/A	N/A	N/A	N/A	N/A	N/A
\$50,000-\$99,999	0	0.0%	N/A	N/A	N/A	N/A	N/A	N/A
\$100,000-\$124,999	0	0.0%	N/A	N/A	N/A	N/A	N/A	N/A
\$125,000-\$149,999	0	0.0%	N/A	N/A	N/A	N/A	N/A	N/A
\$150,000-\$174,999	1	4.5%	150,000	150,000	3	3	100.0%	100.0%
\$175,000-\$199,999	2	9.1%	180,000	180,000	13	13	100.0%	100.0%
\$200,000-\$249,999	2	9.1%	245,000	245,000	8	8	100.0%	100.0%
\$250,000-\$299,999	4	18.2%	256,875	253,750	4	4	100.0%	100.0%
\$300,000-\$399,999	8	36.4%	352,975	349,950	10	11	99.7%	100.0%
\$400,000-\$499,999	5	22.7%	444,000	449,000	12	9	99.7%	100.0%
\$500,000-\$749,999	0	0.0%	N/A	N/A	N/A	N/A	N/A	N/A
\$750,000-\$999,999	0	0.0%	N/A	N/A	N/A	N/A	N/A	N/A
\$1,000,000 and up	0	0.0%	N/A	N/A	N/A	N/A	N/A	N/A



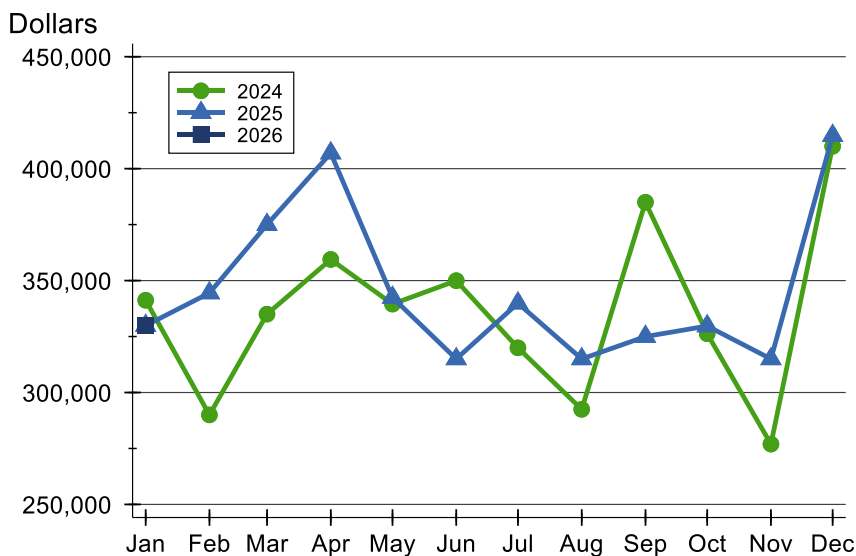
Pottawatomie County New Listings Analysis

Average Price



Month	2024	2025	2026
January	365,790	383,373	321,423
February	354,200	351,213	
March	355,278	358,800	
April	371,502	400,583	
May	372,205	375,011	
June	361,974	316,745	
July	330,579	364,328	
August	331,443	351,374	
September	363,213	329,183	
October	430,667	381,200	
November	283,149	330,791	
December	383,227	425,540	

Median Price



Month	2024	2025	2026
January	341,200	329,900	330,000
February	290,000	344,450	
March	335,000	375,000	
April	359,450	406,950	
May	339,500	342,450	
June	349,950	315,000	
July	319,950	339,900	
August	292,500	315,000	
September	385,000	325,000	
October	326,250	329,700	
November	276,950	315,000	
December	410,000	414,750	



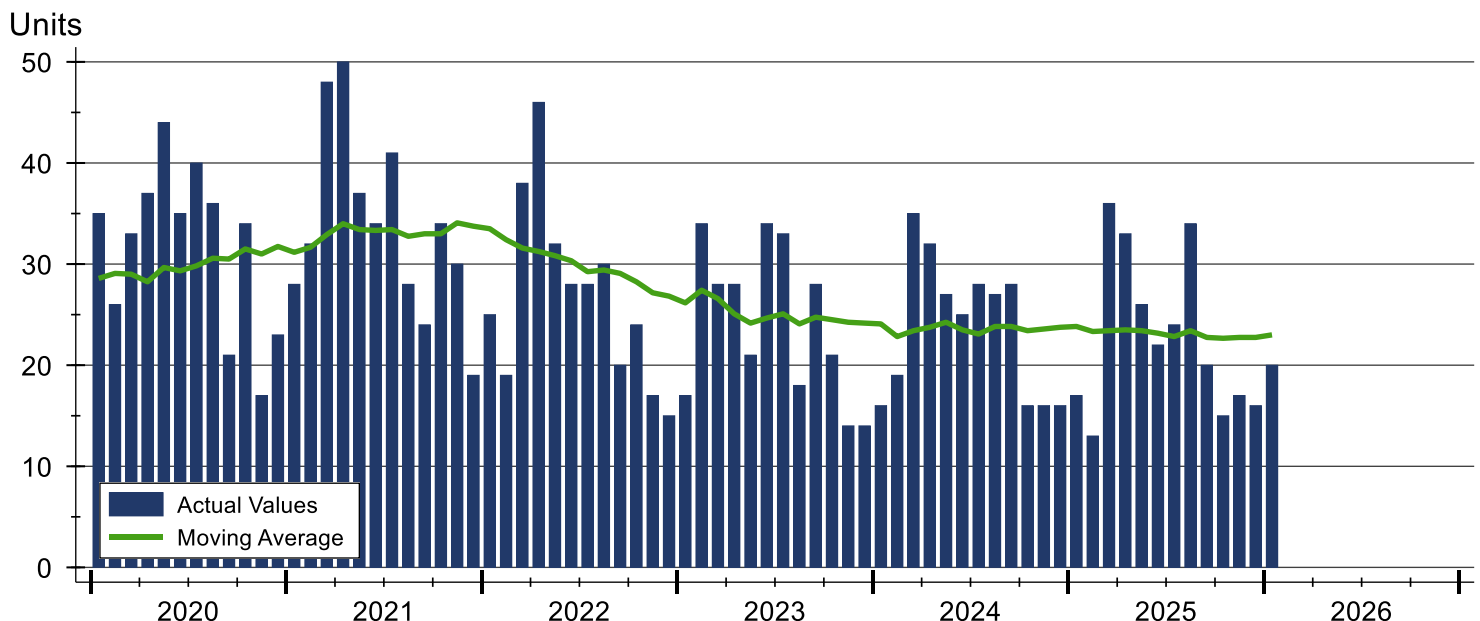
Pottawatomie County Contracts Written Analysis

Summary Statistics for Contracts Written		2026	January 2025	Change	2026	Year-to-Date 2025	Change
Contracts Written		20	17	17.6%	20	17	17.6%
Volume (1,000s)		6,022	6,509	-7.5%	6,022	6,509	-7.5%
Average	Sale Price	301,120	382,859	-21.3%	301,120	382,859	-21.3%
	Days on Market	39	45	-13.3%	39	45	-13.3%
	Percent of Original	96.9%	98.9%	-2.0%	96.9%	98.9%	-2.0%
Median	Sale Price	261,250	380,000	-31.3%	261,250	380,000	-31.3%
	Days on Market	10	34	-70.6%	10	34	-70.6%
	Percent of Original	100.0%	100.0%	0.0%	100.0%	100.0%	0.0%

A total of 20 contracts for sale were written in Pottawatomie County during the month of January, up from 17 in 2025. The median list price of these homes was \$261,250, down from \$380,000 the prior year.

Half of the homes that went under contract in January were on the market less than 10 days, compared to 34 days in January 2025.

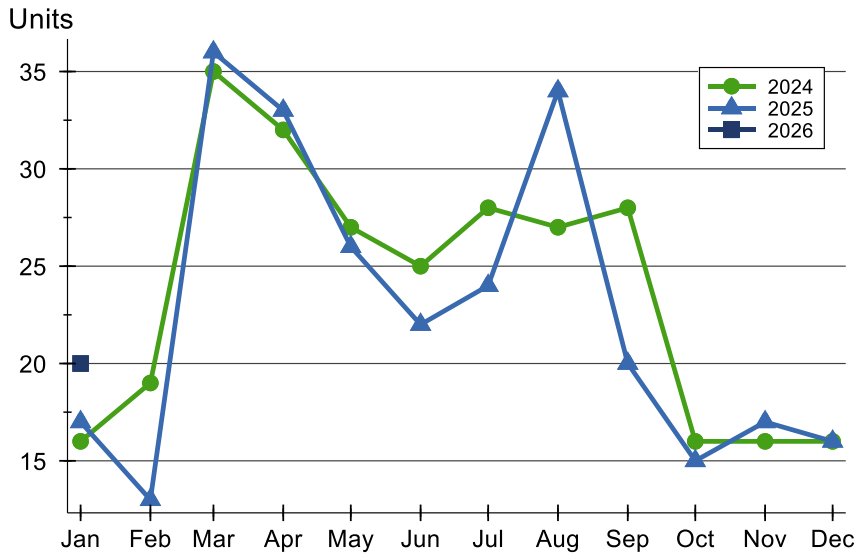
History of Contracts Written





Pottawatomie County Contracts Written Analysis

Contracts Written by Month



Month	2024	2025	2026
January	16	17	20
February	19	13	
March	35	36	
April	32	33	
May	27	26	
June	25	22	
July	28	24	
August	27	34	
September	28	20	
October	16	15	
November	16	17	
December	16	16	

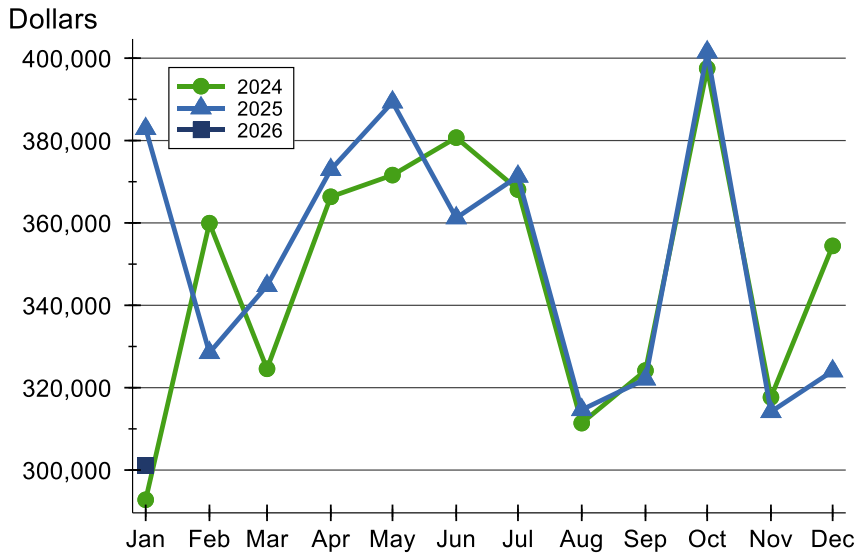
Contracts Written by Price Range

Price Range	Contracts Written Number	Percent	List Price Average	Median	Days on Market Avg.	Med.	Price as % of Orig. Avg.	Med.
Below \$25,000	0	0.0%	N/A	N/A	N/A	N/A	N/A	N/A
\$25,000-\$49,999	0	0.0%	N/A	N/A	N/A	N/A	N/A	N/A
\$50,000-\$99,999	0	0.0%	N/A	N/A	N/A	N/A	N/A	N/A
\$100,000-\$124,999	0	0.0%	N/A	N/A	N/A	N/A	N/A	N/A
\$125,000-\$149,999	1	5.0%	125,000	125,000	112	112	64.5%	64.5%
\$150,000-\$174,999	1	5.0%	150,000	150,000	3	3	100.0%	100.0%
\$175,000-\$199,999	3	15.0%	178,333	175,000	22	16	98.2%	100.0%
\$200,000-\$249,999	3	15.0%	238,333	245,000	24	9	100.0%	100.0%
\$250,000-\$299,999	4	20.0%	267,625	261,250	18	5	99.0%	100.0%
\$300,000-\$399,999	3	15.0%	369,667	375,000	74	11	98.3%	100.0%
\$400,000-\$499,999	4	20.0%	435,975	429,950	35	33	98.6%	100.0%
\$500,000-\$749,999	1	5.0%	574,000	574,000	83	83	93.3%	93.3%
\$750,000-\$999,999	0	0.0%	N/A	N/A	N/A	N/A	N/A	N/A
\$1,000,000 and up	0	0.0%	N/A	N/A	N/A	N/A	N/A	N/A



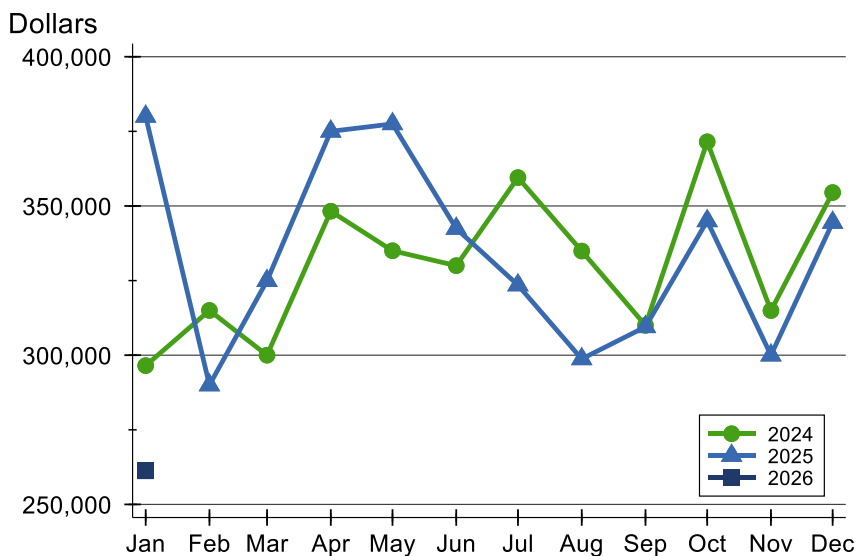
Pottawatomie County Contracts Written Analysis

Average Price



Month	2024	2025	2026
January	292,788	382,859	301,120
February	359,942	328,477	
March	324,583	344,743	
April	366,341	372,923	
May	371,615	389,329	
June	380,712	361,207	
July	368,096	371,308	
August	311,400	314,629	
September	324,163	322,063	
October	397,509	401,483	
November	317,669	314,147	
December	354,426	324,044	

Median Price

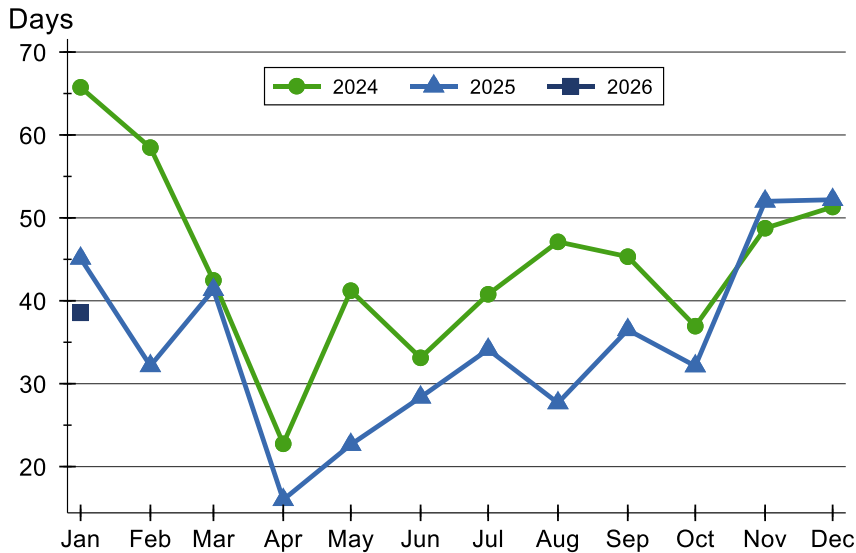


Month	2024	2025	2026
January	296,500	380,000	261,250
February	315,000	290,000	
March	300,000	324,950	
April	348,250	375,000	
May	335,000	377,500	
June	330,000	342,450	
July	359,500	323,500	
August	334,900	298,750	
September	310,000	309,500	
October	371,500	345,000	
November	314,950	300,000	
December	354,500	344,450	



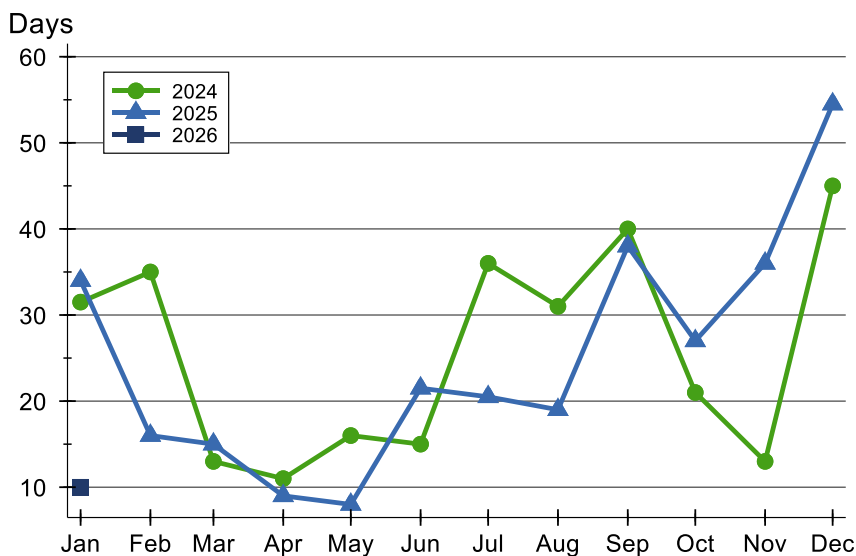
Pottawatomie County Contracts Written Analysis

Average DOM



Month	2024	2025	2026
January	66	45	39
February	58	32	
March	42	41	
April	23	16	
May	41	23	
June	33	28	
July	41	34	
August	47	28	
September	45	37	
October	37	32	
November	49	52	
December	51	52	

Median DOM



Month	2024	2025	2026
January	32	34	10
February	35	16	
March	13	15	
April	11	9	
May	16	8	
June	15	22	
July	36	21	
August	31	19	
September	40	38	
October	21	27	
November	13	36	
December	45	55	



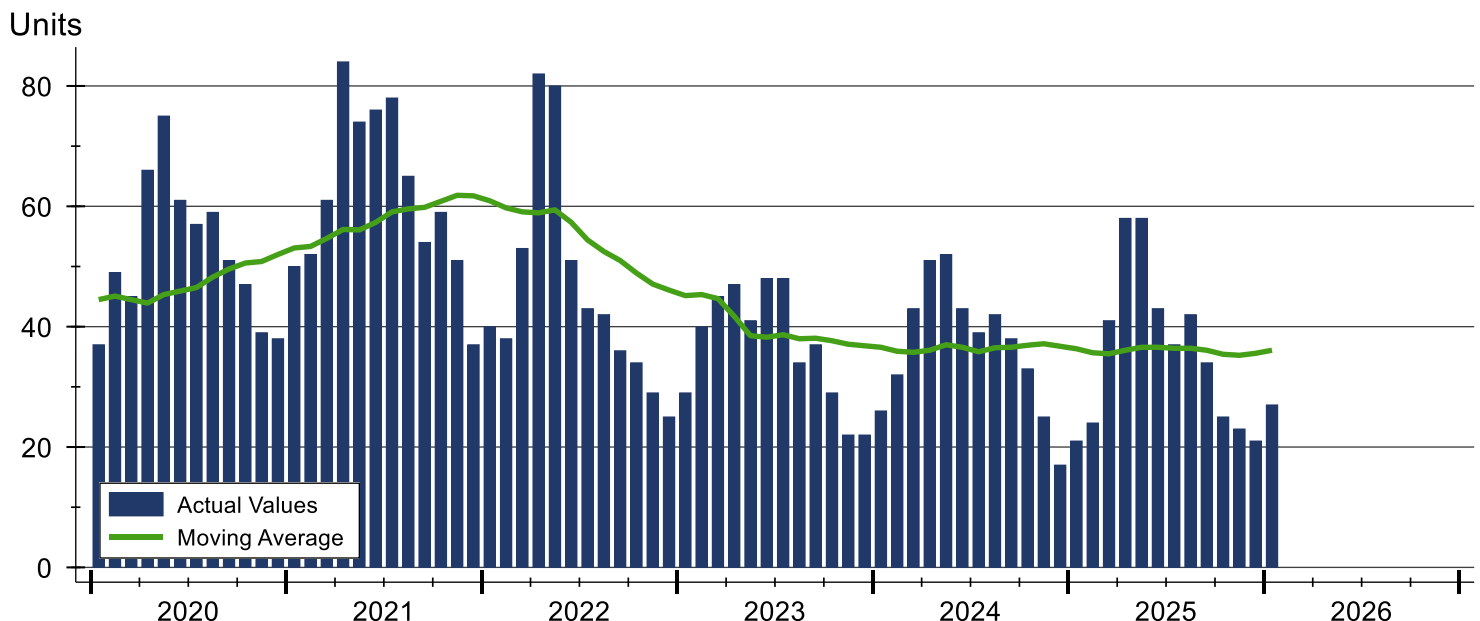
Pottawatomie County Pending Contracts Analysis

Summary Statistics for Pending Contracts		2026	End of January 2025	Change
Pending Contracts		27	21	28.6%
Volume (1,000s)		8,798	7,724	13.9%
Average	List Price	325,856	367,788	-11.4%
	Days on Market	38	64	-40.6%
	Percent of Original	98.2%	98.8%	-0.6%
Median	List Price	329,900	399,900	-17.5%
	Days on Market	11	40	-72.5%
	Percent of Original	100.0%	100.0%	0.0%

A total of 27 listings in Pottawatomie County had contracts pending at the end of January, up from 21 contracts pending at the end of January 2025.

Pending contracts reflect listings with a contract in place at the end of the month. In contrast, contracts written measures the number of listings put under contract during the month.

History of Pending Contracts





**January
2026**

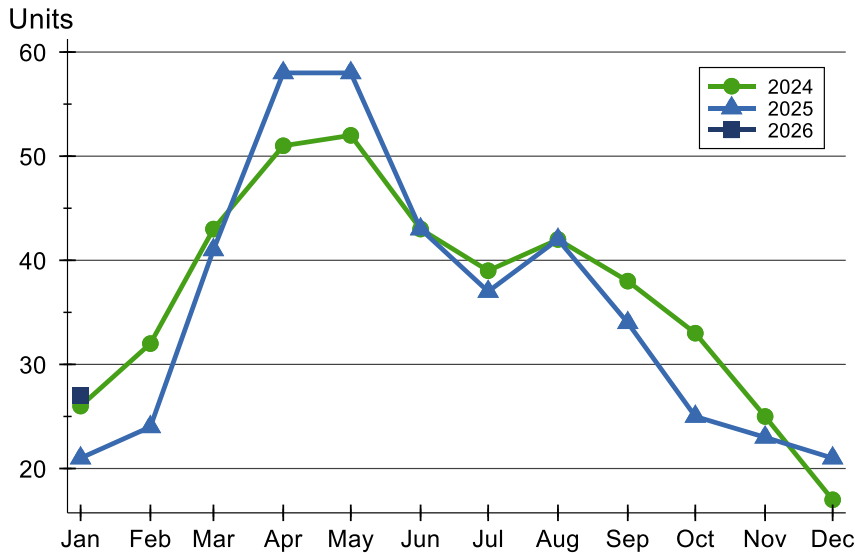
Flint Hills MLS Statistics



**FLINT HILLS
ASSOCIATION
OF REALTORS®**

Pottawatomie County Pending Contracts Analysis

Pending Contracts by Month



Month	2024	2025	2026
January	26	21	27
February	32	24	
March	43	41	
April	51	58	
May	52	58	
June	43	43	
July	39	37	
August	42	42	
September	38	34	
October	33	25	
November	25	23	
December	17	21	

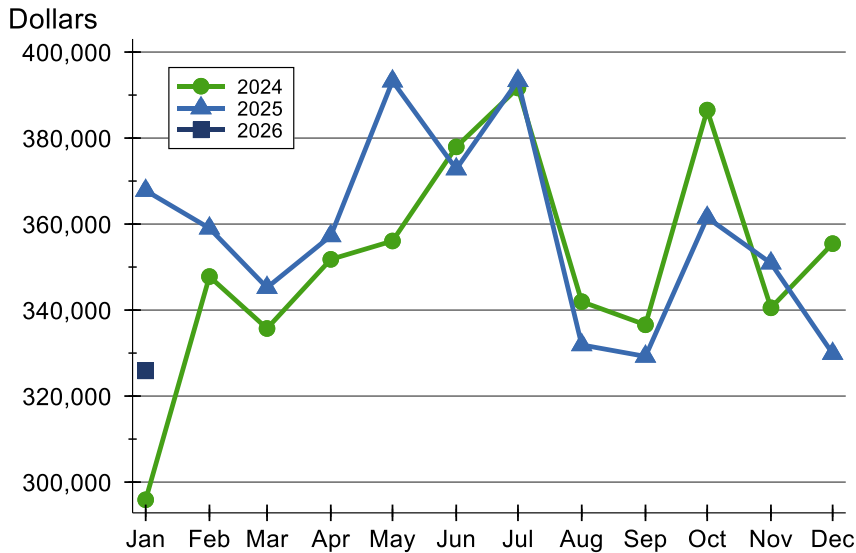
Pending Contracts by Price Range

Price Range	Pending Contracts Number	Percent	List Price Average	Median	Days on Market Avg.	Med.	Price as % of Orig. Avg.	Med.
Below \$25,000	0	0.0%	N/A	N/A	N/A	N/A	N/A	N/A
\$25,000-\$49,999	0	0.0%	N/A	N/A	N/A	N/A	N/A	N/A
\$50,000-\$99,999	0	0.0%	N/A	N/A	N/A	N/A	N/A	N/A
\$100,000-\$124,999	0	0.0%	N/A	N/A	N/A	N/A	N/A	N/A
\$125,000-\$149,999	0	0.0%	N/A	N/A	N/A	N/A	N/A	N/A
\$150,000-\$174,999	1	3.7%	150,000	150,000	3	3	100.0%	100.0%
\$175,000-\$199,999	3	11.1%	178,333	175,000	22	16	98.2%	100.0%
\$200,000-\$249,999	3	11.1%	238,333	245,000	24	9	100.0%	100.0%
\$250,000-\$299,999	6	22.2%	271,733	274,950	46	33	95.6%	98.1%
\$300,000-\$399,999	6	22.2%	360,650	362,500	73	58	98.5%	100.0%
\$400,000-\$499,999	7	25.9%	432,829	435,000	13	1	100.0%	100.0%
\$500,000-\$749,999	1	3.7%	574,000	574,000	83	83	93.3%	93.3%
\$750,000-\$999,999	0	0.0%	N/A	N/A	N/A	N/A	N/A	N/A
\$1,000,000 and up	0	0.0%	N/A	N/A	N/A	N/A	N/A	N/A



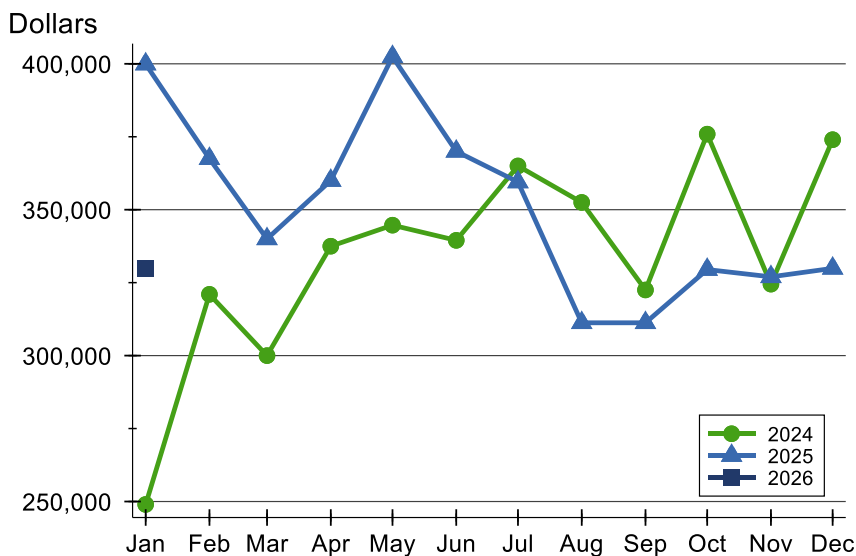
Pottawatomie County Pending Contracts Analysis

Average Price



Month	2024	2025	2026
January	295,888	367,788	325,856
February	347,797	359,038	
March	335,716	345,226	
April	351,796	357,247	
May	356,067	393,239	
June	377,952	372,798	
July	391,650	393,323	
August	341,955	331,900	
September	336,580	329,225	
October	386,509	361,510	
November	340,524	350,909	
December	355,451	329,876	

Median Price



Month	2024	2025	2026
January	249,000	399,900	329,900
February	321,000	367,500	
March	300,000	340,000	
April	337,500	360,000	
May	344,700	402,425	
June	339,500	370,000	
July	365,000	359,500	
August	352,500	311,250	
September	322,500	311,250	
October	375,900	329,500	
November	324,500	327,000	
December	374,000	329,900	



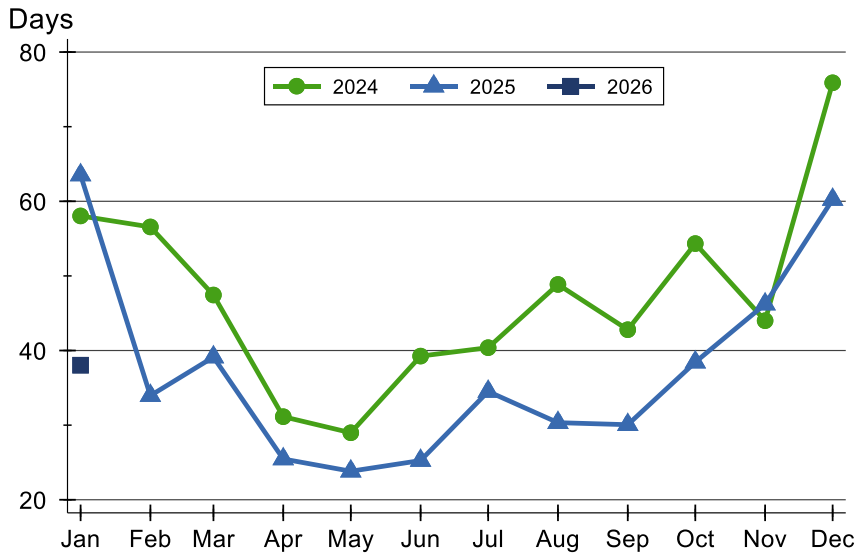
**January
2026**

Flint Hills MLS Statistics



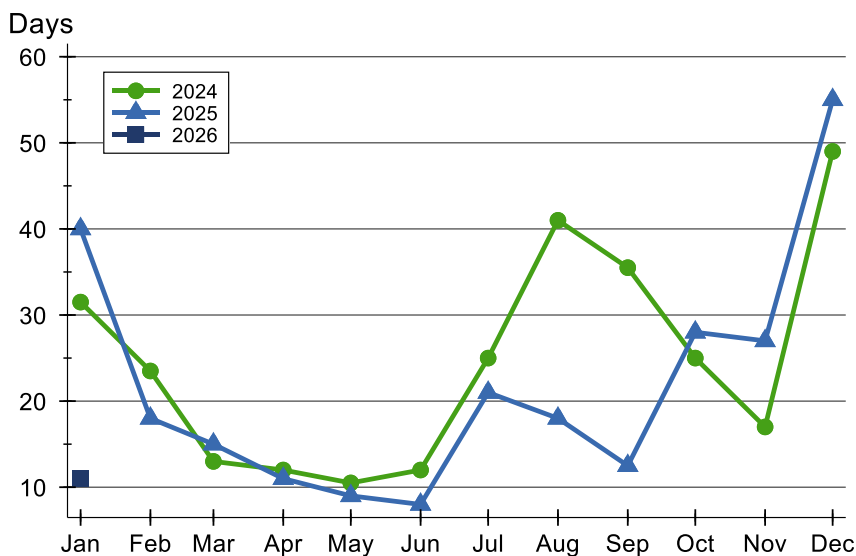
Pottawatomie County Pending Contracts Analysis

Average DOM



Month	2024	2025	2026
January	58	64	38
February	57	34	
March	47	39	
April	31	25	
May	29	24	
June	39	25	
July	40	35	
August	49	30	
September	43	30	
October	54	38	
November	44	46	
December	76	60	

Median DOM



Month	2024	2025	2026
January	32	40	11
February	24	18	
March	13	15	
April	12	11	
May	11	9	
June	12	8	
July	25	21	
August	41	18	
September	36	13	
October	25	28	
November	17	27	
December	49	55	