



**March
2026**

Flint Hills MLS Statistics



**FLINT HILLS
ASSOCIATION
OF REALTORS®**

Pottawatomie County Housing Report



Market Overview

Pottawatomie County Home Sales Rose in March

Total home sales in Pottawatomie County rose by 66.7% last month to 25 units, compared to 15 units in March 2025. Total sales volume was \$8.6 million, up 50.1% from a year earlier.

The median sale price in March was \$350,000, up from \$326,000 a year earlier. Homes that sold in March were typically on the market for 11 days and sold for 98.7% of their list prices.

Pottawatomie County Active Listings Up at End of March

The total number of active listings in Pottawatomie County at the end of March was 52 units, up from 38 at the same point in 2025. This represents a 2.2 months' supply of homes available for sale. The median list price of homes on the market at the end of March was \$349,950.

During March, a total of 31 contracts were written down from 36 in March 2025. At the end of the month, there were 43 contracts still pending.

Report Contents

- Summary Statistics – Page 2
- Closed Listing Analysis – Page 3
- Active Listings Analysis – Page 7
- Months' Supply Analysis – Page 11
- New Listings Analysis – Page 12
- Contracts Written Analysis – Page 15
- Pending Contracts Analysis – Page 19

Contact Information

Margaret Pendleton, Association Executive
 Flint Hills Association of REALTORS®
 205 S. Seth Child Road
 Manhattan, KS 66502
 785-776-1203
ae@flinthillsrealtors.net
www.flinthillsrealtors.net



**March
2026**

Flint Hills MLS Statistics



**FLINT HILLS
ASSOCIATION
OF REALTORS®**

Pottawatomie County Summary Statistics

March MLS Statistics Three-year History		Current Month			Year-to-Date		
		2026	2025	2024	2026	2025	2024
Home Sales		25	15	24	50	40	52
Change from prior year		66.7%	-37.5%	-7.7%	25.0%	-23.1%	-13.3%
Active Listings		52	38	36	N/A	N/A	N/A
Change from prior year		36.8%	5.6%	-33.3%			
Months' Supply		2.2	1.6	1.5	N/A	N/A	N/A
Change from prior year		37.5%	6.7%	-21.1%			
New Listings		56	36	40	112	74	92
Change from prior year		55.6%	-10.0%	17.6%	51.4%	-19.6%	-12.4%
Contracts Written		31	36	35	76	66	70
Change from prior year		-13.9%	2.9%	25.0%	15.2%	-5.7%	-11.4%
Pending Contracts		43	41	43	N/A	N/A	N/A
Change from prior year		4.9%	-4.7%	-4.4%			
Sales Volume (1,000s)		8,636	5,753	7,607	16,219	14,626	14,914
Change from prior year		50.1%	-24.4%	-8.3%	10.9%	-1.9%	-21.3%
Average	Sale Price	345,446	383,500	316,938	324,387	365,658	286,809
	Change from prior year	-9.9%	21.0%	-0.6%	-11.3%	27.5%	-9.2%
	List Price of Actives	389,987	431,498	480,714	N/A	N/A	N/A
	Change from prior year	-9.6%	-10.2%	15.7%			
	Days on Market	44	46	61	43	57	57
Change from prior year	-4.3%	-24.6%	32.6%	-24.6%	0.0%	9.6%	
Percent of List	97.9%	99.9%	98.3%	97.4%	98.9%	98.9%	
Change from prior year	-2.0%	1.6%	-2.5%	-1.5%	0.0%	-0.6%	
Percent of Original	96.3%	99.7%	97.1%	95.4%	98.0%	97.2%	
Change from prior year	-3.4%	2.7%	-2.8%	-2.7%	0.8%	-0.1%	
Median	Sale Price	350,000	326,000	288,500	305,450	349,500	267,500
	Change from prior year	7.4%	13.0%	-11.1%	-12.6%	30.7%	-12.7%
	List Price of Actives	349,950	389,250	374,000	N/A	N/A	N/A
	Change from prior year	-10.1%	4.1%	-1.6%			
	Days on Market	11	34	40	28	39	40
Change from prior year	-67.6%	-15.0%	150.0%	-28.2%	-2.5%	66.7%	
Percent of List	98.7%	100.0%	99.9%	98.9%	99.9%	99.6%	
Change from prior year	-1.3%	0.1%	-0.1%	-1.0%	0.3%	-0.2%	
Percent of Original	98.1%	100.0%	99.1%	98.4%	98.2%	98.7%	
Change from prior year	-1.9%	0.9%	0.1%	0.2%	-0.5%	0.8%	

Note: Year-to-date statistics cannot be calculated for Active Listings, Months' Supply and Pending Contracts.



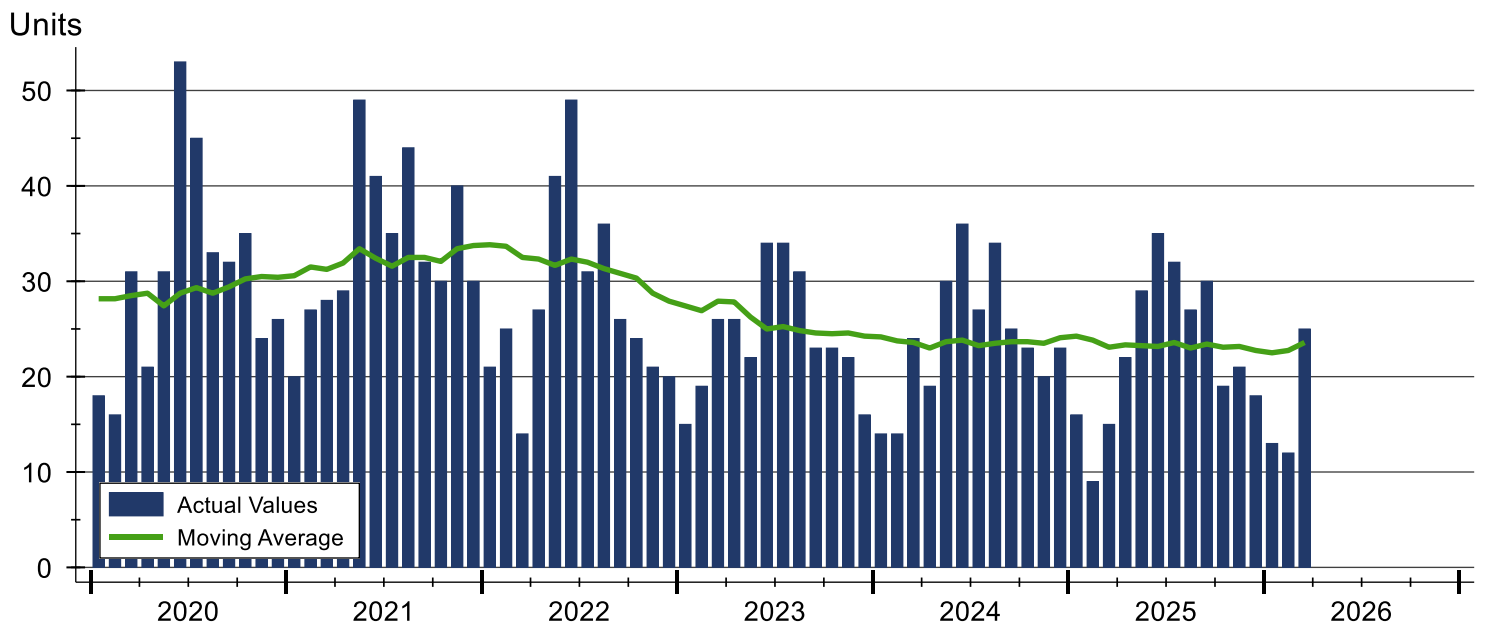
Pottawatomie County Closed Listings Analysis

Summary Statistics for Closed Listings		2026	March 2025	Change	2026	Year-to-Date 2025	Change
Closed Listings		25	15	66.7%	50	40	25.0%
Volume (1,000s)		8,636	5,753	50.1%	16,219	14,626	10.9%
Months' Supply		2.2	1.6	37.5%	N/A	N/A	N/A
Average	Sale Price	345,446	383,500	-9.9%	324,387	365,658	-11.3%
	Days on Market	44	46	-4.3%	43	57	-24.6%
	Percent of List	97.9%	99.9%	-2.0%	97.4%	98.9%	-1.5%
	Percent of Original	96.3%	99.7%	-3.4%	95.4%	98.0%	-2.7%
Median	Sale Price	350,000	326,000	7.4%	305,450	349,500	-12.6%
	Days on Market	11	34	-67.6%	28	39	-28.2%
	Percent of List	98.7%	100.0%	-1.3%	98.9%	99.9%	-1.0%
	Percent of Original	98.1%	100.0%	-1.9%	98.4%	98.2%	0.2%

A total of 25 homes sold in Pottawatomie County in March, up from 15 units in March 2025. Total sales volume rose to \$8.6 million compared to \$5.8 million in the previous year.

The median sales price in March was \$350,000, up 7.4% compared to the prior year. Median days on market was 11 days, down from 12 days in February, and down from 34 in March 2025.

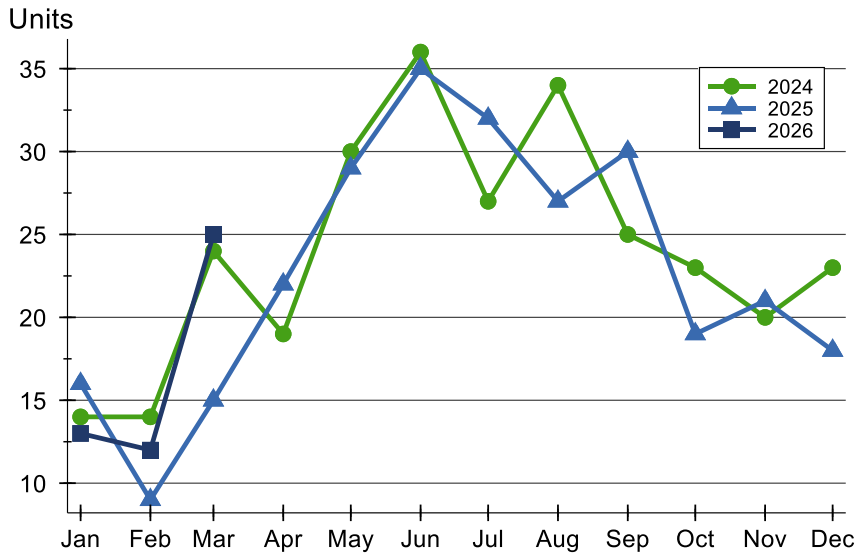
History of Closed Listings





Pottawatomie County Closed Listings Analysis

Closed Listings by Month



Month	2024	2025	2026
January	14	16	13
February	14	9	12
March	24	15	25
April	19	22	19
May	30	29	30
June	36	35	35
July	27	32	32
August	34	27	27
September	25	30	30
October	23	19	19
November	20	21	21
December	23	18	18

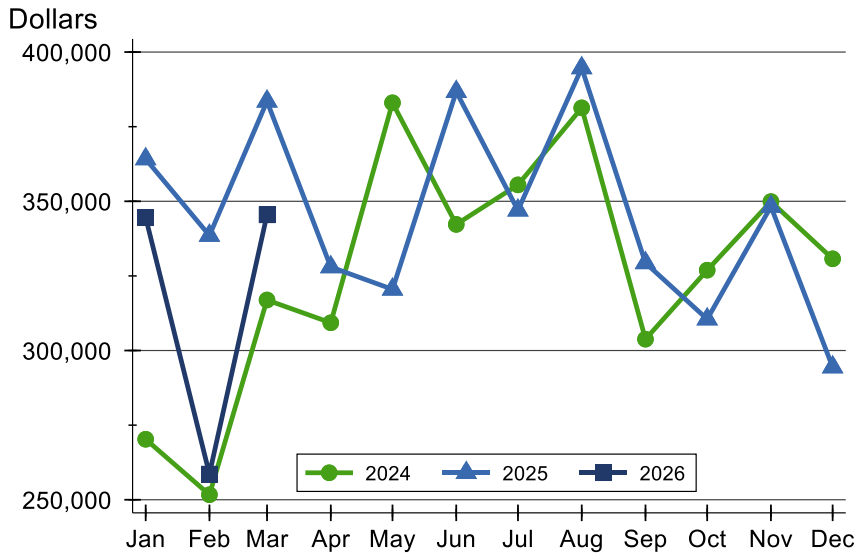
Closed Listings by Price Range

Price Range	Sales		Months' Supply	Sale Price		Days on Market		Price as % of List		Price as % of Orig.	
	Number	Percent		Average	Median	Avg.	Med.	Avg.	Med.	Avg.	Med.
Below \$25,000	0	0.0%	N/A	N/A	N/A	N/A	N/A	N/A	N/A	N/A	N/A
\$25,000-\$49,999	0	0.0%	N/A	N/A	N/A	N/A	N/A	N/A	N/A	N/A	N/A
\$50,000-\$99,999	0	0.0%	N/A	N/A	N/A	N/A	N/A	N/A	N/A	N/A	N/A
\$100,000-\$124,999	0	0.0%	N/A	N/A	N/A	N/A	N/A	N/A	N/A	N/A	N/A
\$125,000-\$149,999	1	4.0%	0.0	130,000	130,000	42	42	74.3%	74.3%	70.3%	70.3%
\$150,000-\$174,999	2	8.0%	1.2	162,500	162,500	5	5	95.6%	95.6%	95.6%	95.6%
\$175,000-\$199,999	0	0.0%	N/A	N/A	N/A	N/A	N/A	N/A	N/A	N/A	N/A
\$200,000-\$249,999	2	8.0%	2.4	230,000	230,000	64	64	100.0%	100.0%	95.7%	95.7%
\$250,000-\$299,999	4	16.0%	1.6	271,750	271,000	26	21	99.7%	98.4%	98.8%	98.4%
\$300,000-\$399,999	7	28.0%	2.3	343,950	350,000	59	11	99.5%	100.0%	97.6%	98.1%
\$400,000-\$499,999	7	28.0%	1.6	440,214	428,000	47	34	98.9%	99.7%	98.2%	99.0%
\$500,000-\$749,999	2	8.0%	5.3	572,500	572,500	45	45	97.5%	97.5%	94.3%	94.3%
\$750,000-\$999,999	0	0.0%	N/A	N/A	N/A	N/A	N/A	N/A	N/A	N/A	N/A
\$1,000,000 and up	0	0.0%	N/A	N/A	N/A	N/A	N/A	N/A	N/A	N/A	N/A



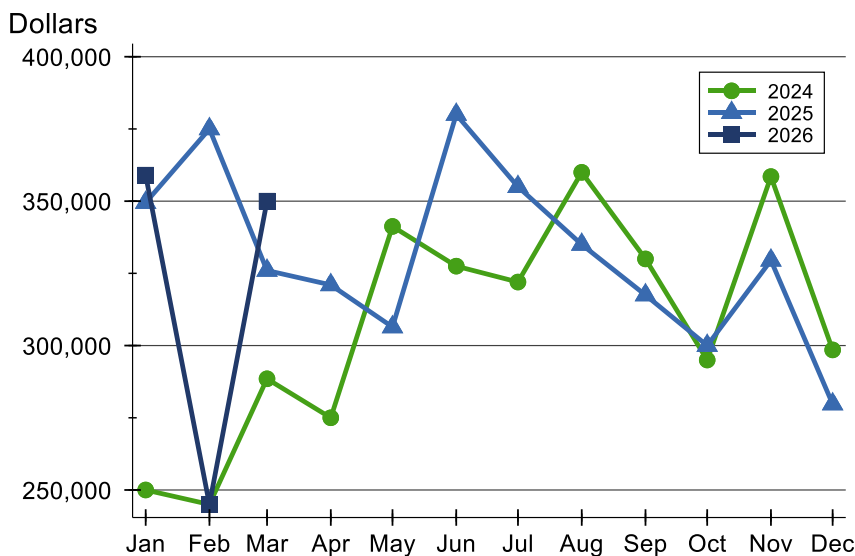
Pottawatomie County Closed Listings Analysis

Average Price



Month	2024	2025	2026
January	270,281	364,181	344,592
February	251,689	338,544	258,625
March	316,938	383,500	345,446
April	309,311	327,993	
May	383,004	320,503	
June	342,261	386,738	
July	355,507	346,994	
August	381,306	394,678	
September	303,804	329,360	
October	326,926	310,514	
November	349,902	348,233	
December	330,731	294,451	

Median Price

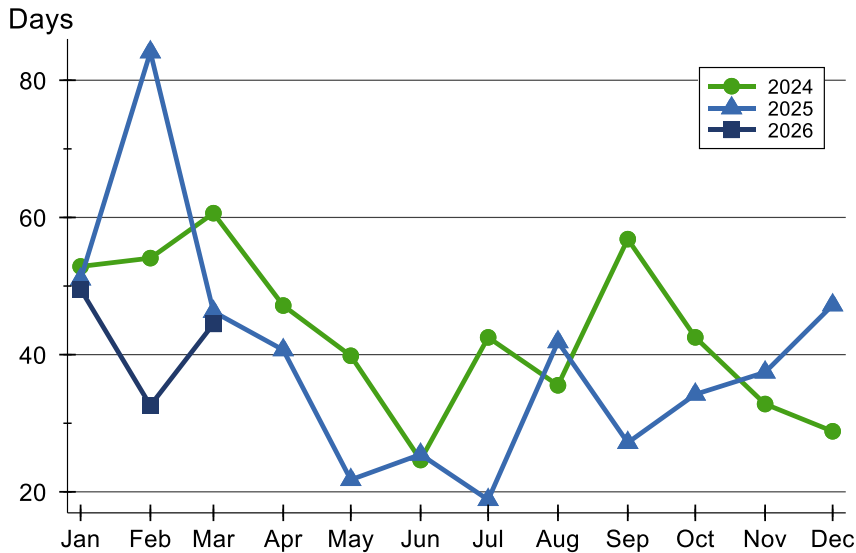


Month	2024	2025	2026
January	250,000	349,500	359,000
February	245,000	375,000	245,000
March	288,500	326,000	350,000
April	275,000	321,000	
May	341,250	306,425	
June	327,500	380,000	
July	322,000	355,000	
August	359,975	335,000	
September	330,000	317,500	
October	295,000	300,000	
November	358,500	329,500	
December	298,500	279,750	



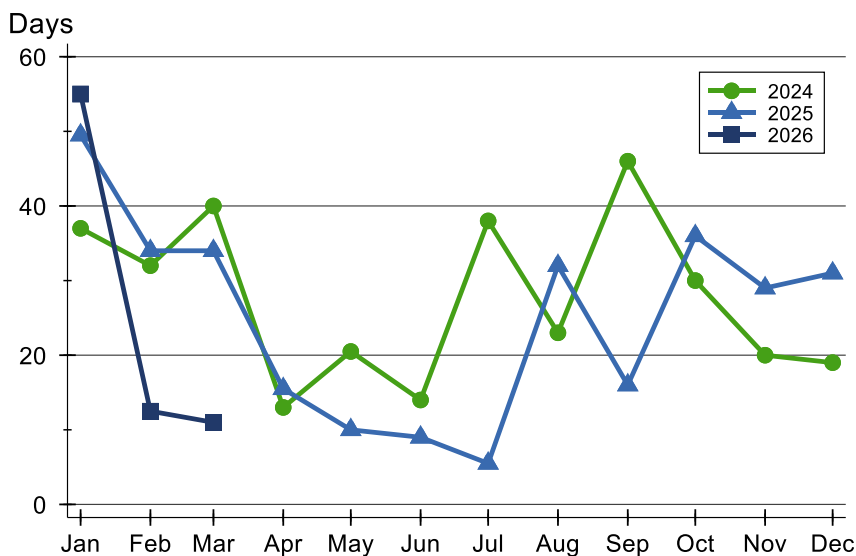
Pottawatomie County Closed Listings Analysis

Average DOM



Month	2024	2025	2026
January	53	51	50
February	54	84	33
March	61	46	44
April	47	41	
May	40	22	
June	25	25	
July	43	19	
August	36	42	
September	57	27	
October	43	34	
November	33	37	
December	29	47	

Median DOM



Month	2024	2025	2026
January	37	50	55
February	32	34	13
March	40	34	11
April	13	16	
May	21	10	
June	14	9	
July	38	6	
August	23	32	
September	46	16	
October	30	36	
November	20	29	
December	19	31	



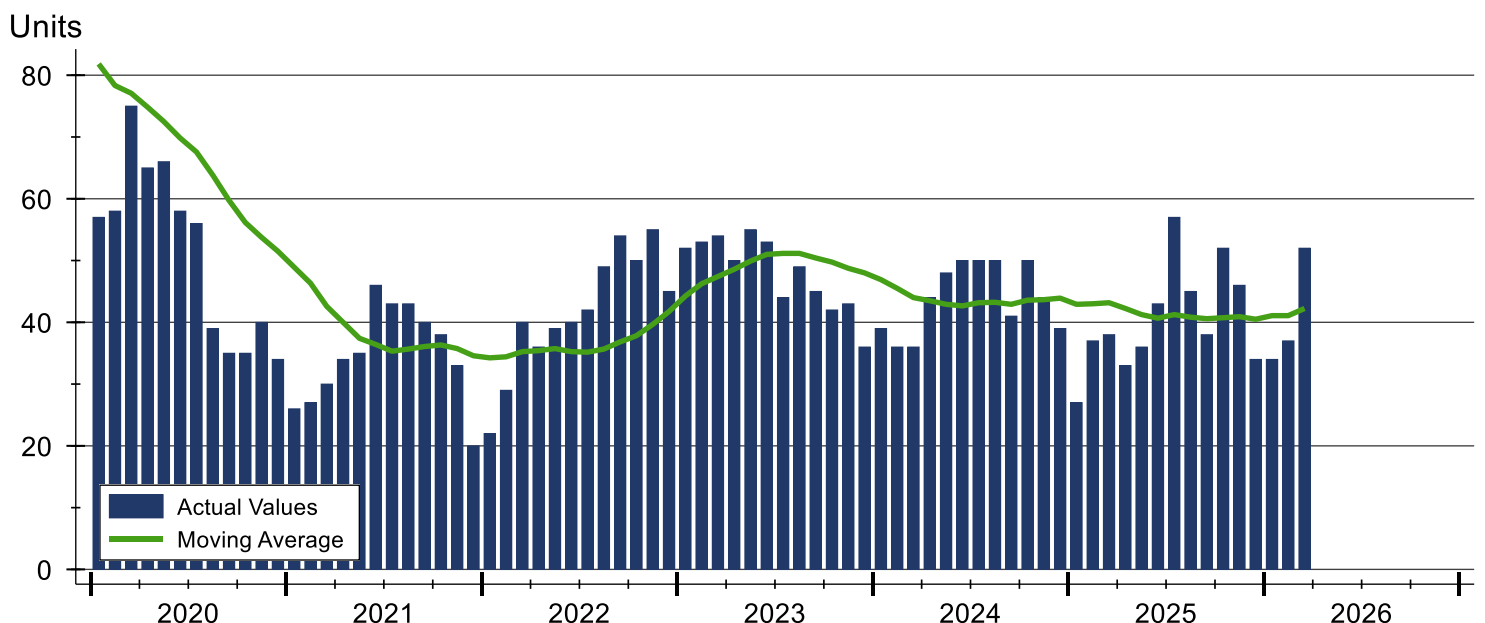
Pottawatomie County Active Listings Analysis

Summary Statistics for Active Listings		2026	End of March 2025	Change
Active Listings		52	38	36.8%
Volume (1,000s)		20,279	16,397	23.7%
Months' Supply		2.2	1.6	37.5%
Average	List Price	389,987	431,498	-9.6%
	Days on Market	27	59	-54.2%
	Percent of Original	98.8%	98.5%	0.3%
Median	List Price	349,950	389,250	-10.1%
	Days on Market	13	30	-56.7%
	Percent of Original	100.0%	100.0%	0.0%

A total of 52 homes were available for sale in Pottawatomie County at the end of March. This represents a 2.2 months' supply of active listings.

The median list price of homes on the market at the end of March was \$349,950, down 10.1% from 2025. The typical time on market for active listings was 13 days, down from 30 days a year earlier.

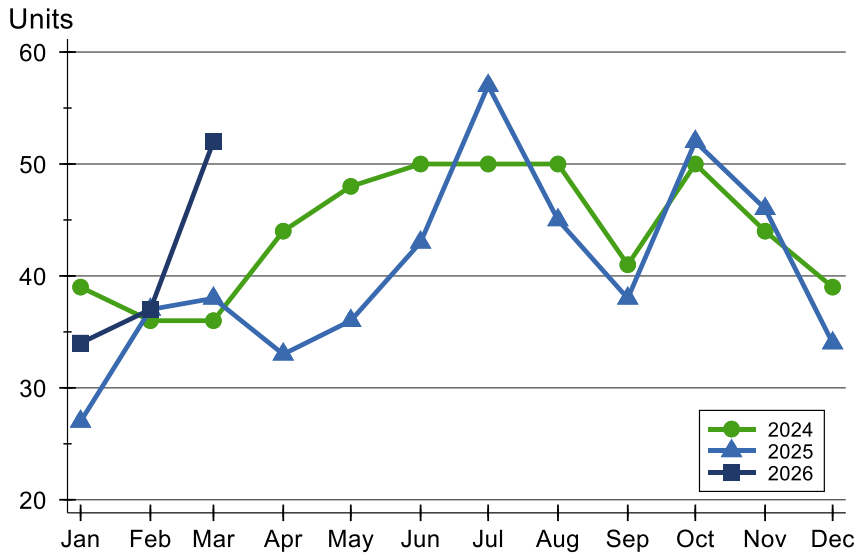
History of Active Listings





Pottawatomie County Active Listings Analysis

Active Listings by Month



Month	2024	2025	2026
January	39	27	34
February	36	37	37
March	36	38	52
April	44	33	
May	48	36	
June	50	43	
July	50	57	
August	50	45	
September	41	38	
October	50	52	
November	44	46	
December	39	34	

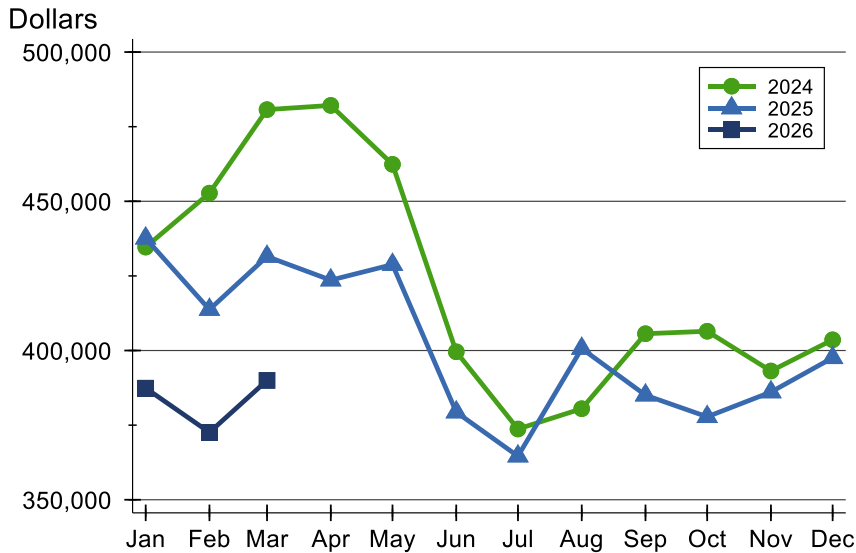
Active Listings by Price Range

Price Range	Active Listings		Months' Supply	List Price		Days on Market		Price as % of Orig.	
	Number	Percent		Average	Median	Avg.	Med.	Avg.	Med.
Below \$25,000	0	0.0%	N/A	N/A	N/A	N/A	N/A	N/A	N/A
\$25,000-\$49,999	0	0.0%	N/A	N/A	N/A	N/A	N/A	N/A	N/A
\$50,000-\$99,999	3	5.8%	N/A	76,567	69,900	92	18	93.0%	100.0%
\$100,000-\$124,999	0	0.0%	N/A	N/A	N/A	N/A	N/A	N/A	N/A
\$125,000-\$149,999	0	0.0%	0.0	N/A	N/A	N/A	N/A	N/A	N/A
\$150,000-\$174,999	1	1.9%	1.2	174,900	174,900	19	19	100.0%	100.0%
\$175,000-\$199,999	1	1.9%	N/A	190,000	190,000	7	7	100.0%	100.0%
\$200,000-\$249,999	6	11.5%	2.4	228,083	226,250	17	14	98.8%	100.0%
\$250,000-\$299,999	6	11.5%	1.6	292,817	295,000	34	12	99.6%	100.0%
\$300,000-\$399,999	17	32.7%	2.3	350,412	349,900	24	15	99.4%	100.0%
\$400,000-\$499,999	8	15.4%	1.6	445,175	437,450	19	8	98.0%	100.0%
\$500,000-\$749,999	8	15.4%	5.3	623,863	614,000	23	7	99.0%	100.0%
\$750,000-\$999,999	1	1.9%	N/A	850,000	850,000	9	9	100.0%	100.0%
\$1,000,000 and up	1	1.9%	N/A	1,200,000	1,200,000	26	26	100.0%	100.0%



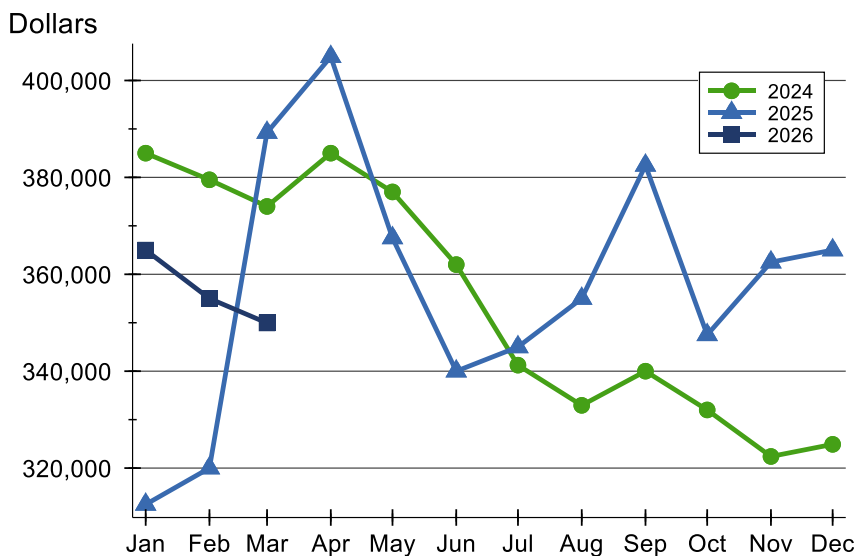
Pottawatomie County Active Listings Analysis

Average Price



Month	2024	2025	2026
January	434,659	437,624	387,415
February	452,747	413,734	372,573
March	480,714	431,498	389,987
April	482,127	423,592	
May	462,386	428,804	
June	399,586	379,366	
July	373,705	364,618	
August	380,508	400,684	
September	405,635	385,046	
October	406,458	377,808	
November	393,149	386,098	
December	403,595	397,565	

Median Price

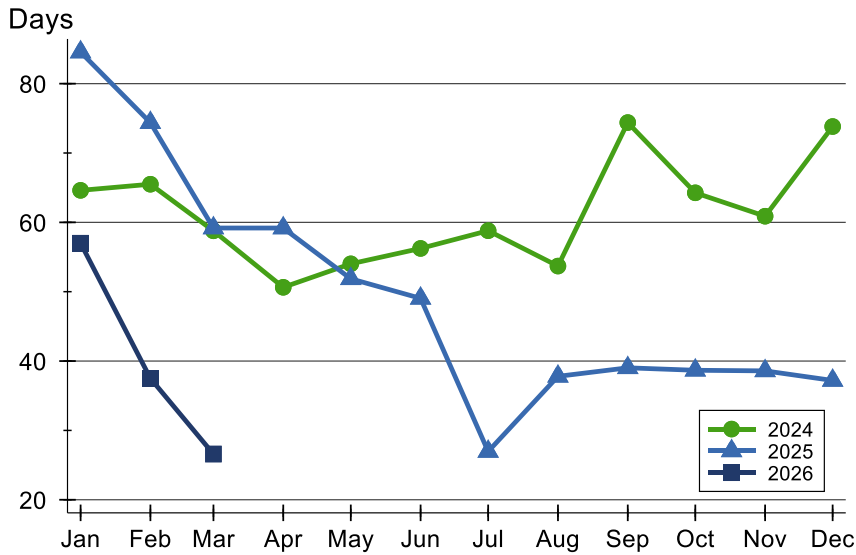


Month	2024	2025	2026
January	385,000	312,500	365,000
February	379,500	320,000	355,000
March	374,000	389,250	349,950
April	385,000	404,900	
May	377,000	367,500	
June	362,000	340,000	
July	341,250	345,000	
August	332,950	355,000	
September	340,000	382,475	
October	332,000	347,500	
November	322,400	362,500	
December	324,900	365,000	



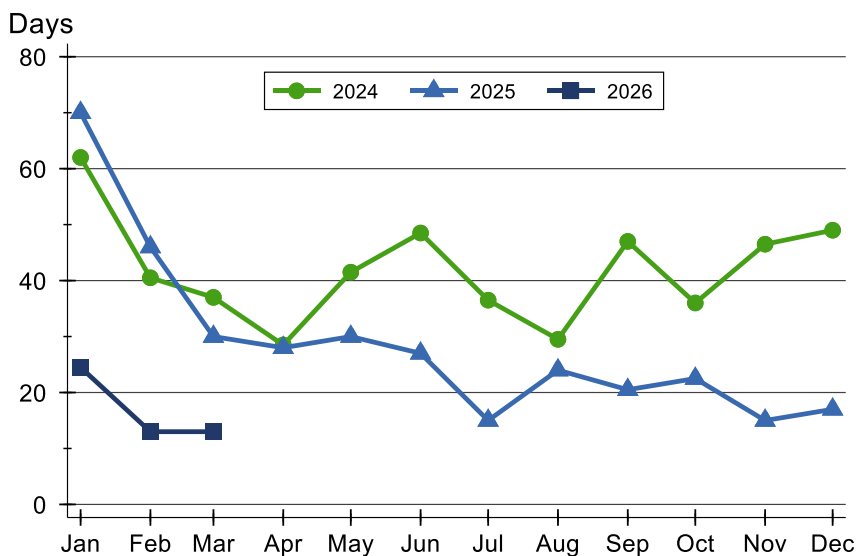
Pottawatomie County Active Listings Analysis

Average DOM



Month	2024	2025	2026
January	65	85	57
February	66	74	38
March	59	59	27
April	51	59	
May	54	52	
June	56	49	
July	59	27	
August	54	38	
September	74	39	
October	64	39	
November	61	39	
December	74	37	

Median DOM

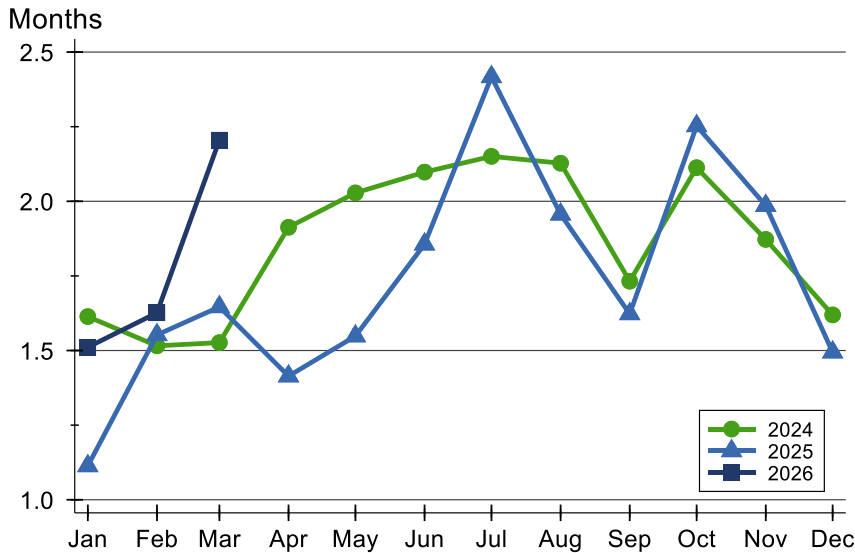


Month	2024	2025	2026
January	62	70	25
February	41	46	13
March	37	30	13
April	29	28	
May	42	30	
June	49	27	
July	37	15	
August	30	24	
September	47	21	
October	36	23	
November	47	15	
December	49	17	



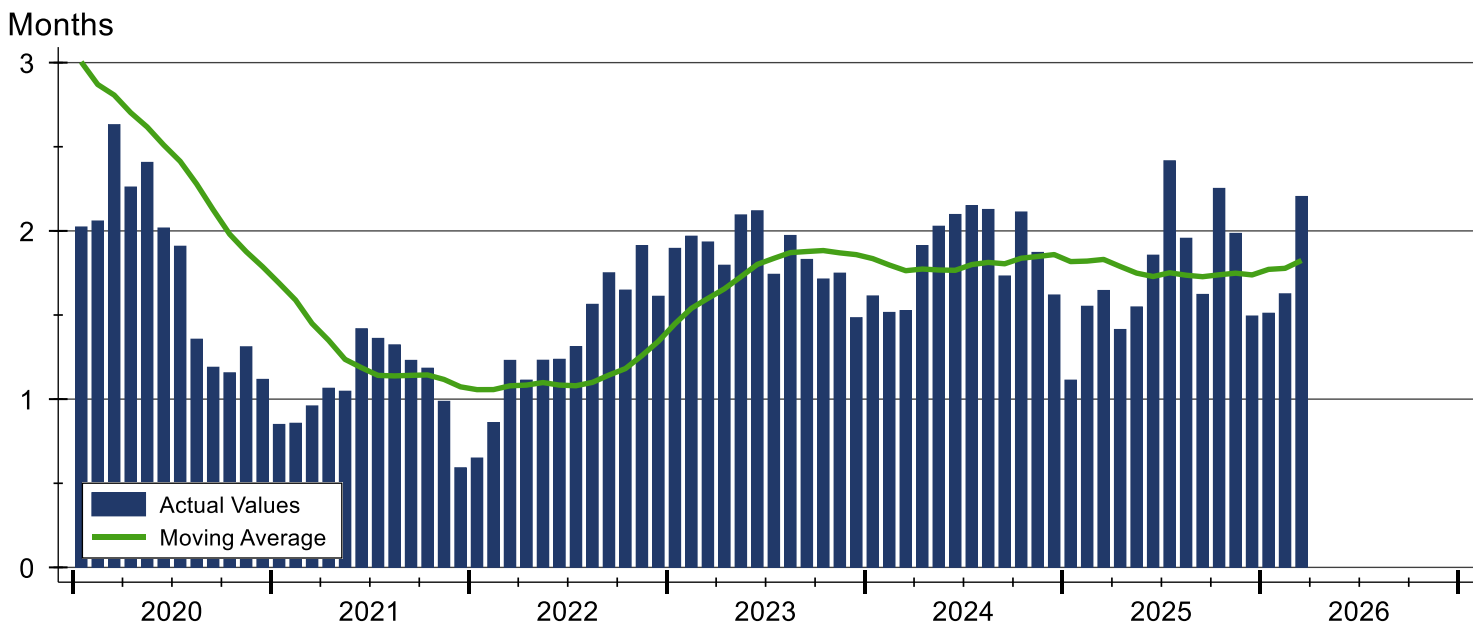
Pottawatomie County Months' Supply Analysis

Months' Supply by Month



Month	2024	2025	2026
January	1.6	1.1	1.5
February	1.5	1.6	1.6
March	1.5	1.6	2.2
April	1.9	1.4	
May	2.0	1.5	
June	2.1	1.9	
July	2.2	2.4	
August	2.1	2.0	
September	1.7	1.6	
October	2.1	2.3	
November	1.9	2.0	
December	1.6	1.5	

History of Month's Supply





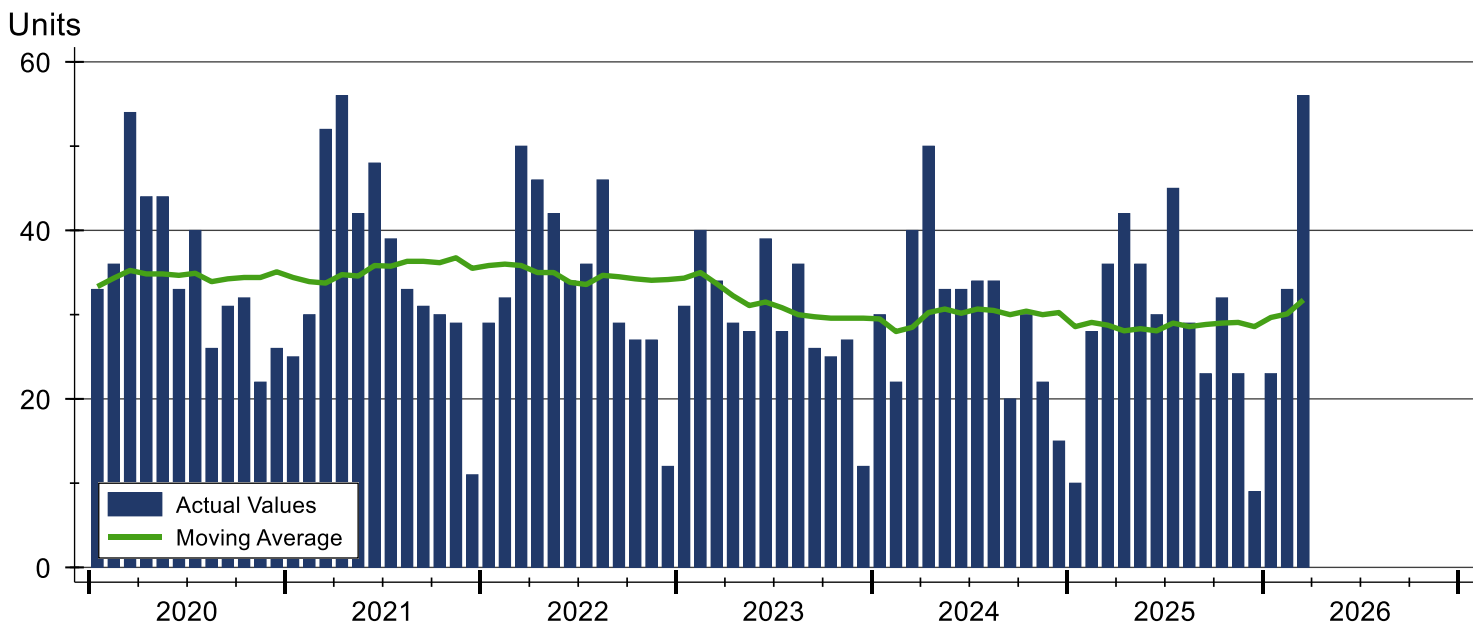
Pottawatomie County New Listings Analysis

Summary Statistics for New Listings		2026	March 2025	Change
Current Month	New Listings	56	36	55.6%
	Volume (1,000s)	21,617	12,917	67.4%
	Average List Price	386,018	358,800	7.6%
	Median List Price	349,500	375,000	-6.8%
Year-to-Date	New Listings	112	74	51.4%
	Volume (1,000s)	41,388	26,625	55.4%
	Average List Price	369,535	359,802	2.7%
	Median List Price	347,500	352,000	-1.3%

A total of 56 new listings were added in Pottawatomie County during March, up 55.6% from the same month in 2025. Year-to-date Pottawatomie County has seen 112 new listings.

The median list price of these homes was \$349,500 down from \$375,000 in 2025.

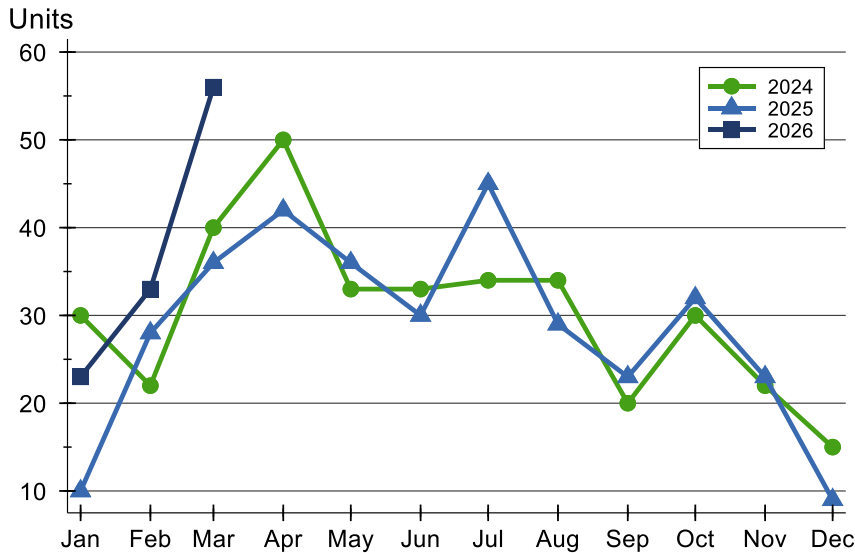
History of New Listings





Pottawatomie County New Listings Analysis

New Listings by Month



Month	2024	2025	2026
January	30	10	23
February	22	28	33
March	40	36	56
April	50	42	
May	33	36	
June	33	30	
July	34	45	
August	34	29	
September	20	23	
October	30	32	
November	22	23	
December	15	9	

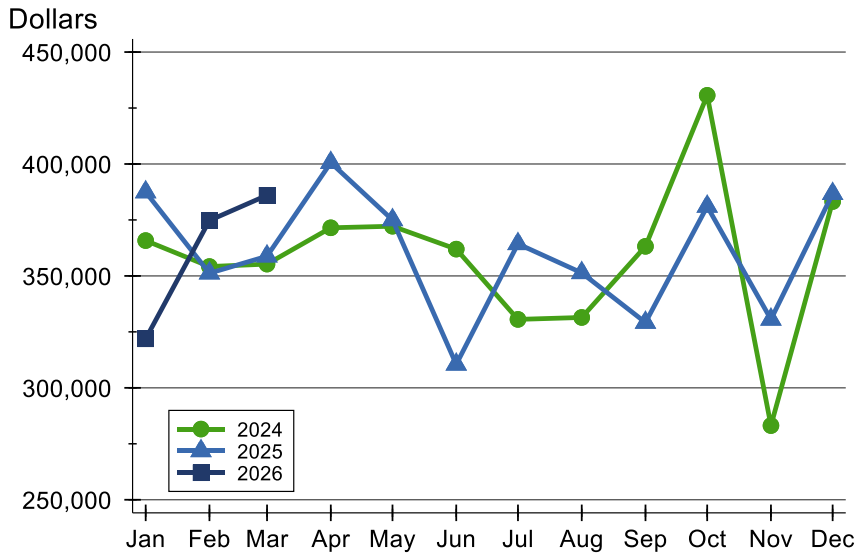
New Listings by Price Range

Price Range	New Listings		List Price		Days on Market		Price as % of Orig.	
	Number	Percent	Average	Median	Avg.	Med.	Avg.	Med.
Below \$25,000	0	0.0%	N/A	N/A	N/A	N/A	N/A	N/A
\$25,000-\$49,999	0	0.0%	N/A	N/A	N/A	N/A	N/A	N/A
\$50,000-\$99,999	2	3.6%	79,900	79,900	11	11	100.7%	100.7%
\$100,000-\$124,999	0	0.0%	N/A	N/A	N/A	N/A	N/A	N/A
\$125,000-\$149,999	1	1.8%	149,900	149,900	26	26	88.7%	88.7%
\$150,000-\$174,999	0	0.0%	N/A	N/A	N/A	N/A	N/A	N/A
\$175,000-\$199,999	2	3.6%	184,000	184,000	15	15	100.0%	100.0%
\$200,000-\$249,999	6	10.7%	222,583	214,500	11	10	99.4%	100.0%
\$250,000-\$299,999	7	12.5%	286,143	295,000	8	7	100.0%	100.0%
\$300,000-\$399,999	18	32.1%	347,478	347,500	9	8	100.2%	100.0%
\$400,000-\$499,999	10	17.9%	436,430	430,000	5	5	98.6%	100.0%
\$500,000-\$749,999	8	14.3%	616,488	599,500	8	5	99.9%	100.0%
\$750,000-\$999,999	1	1.8%	850,000	850,000	9	9	100.0%	100.0%
\$1,000,000 and up	1	1.8%	1,200,000	1,200,000	26	26	100.0%	100.0%



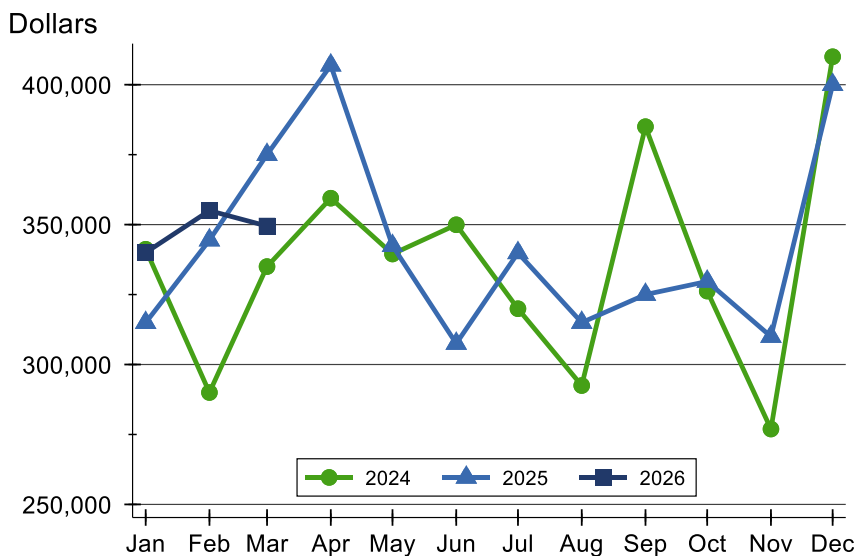
Pottawatomie County New Listings Analysis

Average Price



Month	2024	2025	2026
January	365,790	387,460	321,900
February	354,200	351,213	374,764
March	355,278	358,800	386,018
April	371,502	400,583	
May	372,205	375,011	
June	361,974	310,487	
July	330,579	364,328	
August	331,443	351,374	
September	363,213	329,183	
October	430,667	381,044	
November	283,149	330,574	
December	383,227	386,711	

Median Price



Month	2024	2025	2026
January	341,200	314,950	340,000
February	290,000	344,450	355,000
March	335,000	375,000	349,500
April	359,450	406,950	
May	339,500	342,450	
June	349,950	307,500	
July	319,950	339,900	
August	292,500	315,000	
September	385,000	325,000	
October	326,250	329,700	
November	276,950	310,000	
December	410,000	400,000	

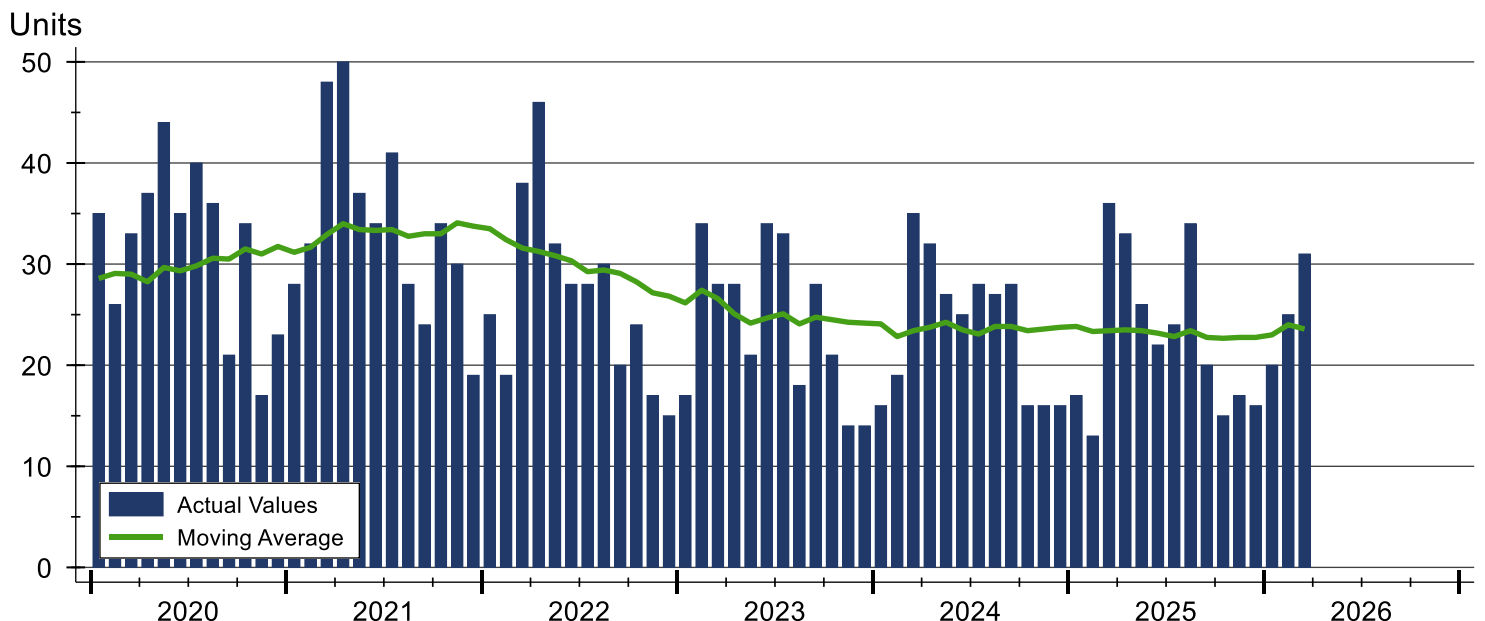


Pottawatomie County Contracts Written Analysis

Summary Statistics for Contracts Written		2026	March 2025	Change	2026	Year-to-Date 2025	Change
Contracts Written		31	36	-13.9%	76	66	15.2%
Volume (1,000s)		11,404	12,411	-8.1%	26,380	23,190	13.8%
Average	Sale Price	367,874	344,743	6.7%	347,107	351,357	-1.2%
	Days on Market	27	41	-34.1%	33	41	-19.5%
	Percent of Original	99.1%	97.2%	2.0%	97.8%	98.0%	-0.2%
Median	Sale Price	365,000	324,950	12.3%	344,900	329,900	4.5%
	Days on Market	7	15	-53.3%	9	19	-52.6%
	Percent of Original	100.0%	99.3%	0.7%	100.0%	99.7%	0.3%

A total of 31 contracts for sale were written in Pottawatomie County during the month of March, down from 36 in 2025. The median list price of these homes was \$365,000, up from \$324,950 the prior year. Half of the homes that went under contract in March were on the market less than 7 days, compared to 15 days in March 2025.

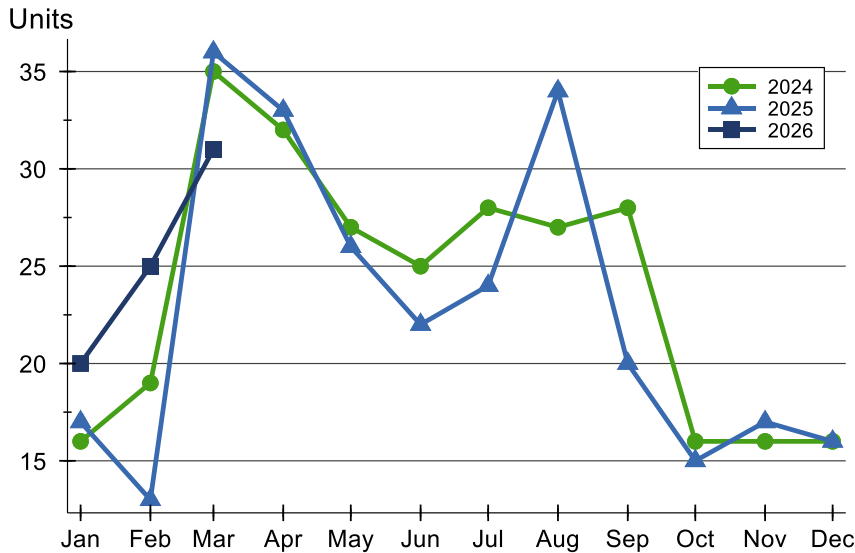
History of Contracts Written





Pottawatomie County Contracts Written Analysis

Contracts Written by Month



Month	2024	2025	2026
January	16	17	20
February	19	13	25
March	35	36	31
April	32	33	
May	27	26	
June	25	22	
July	28	24	
August	27	34	
September	28	20	
October	16	15	
November	16	17	
December	16	16	

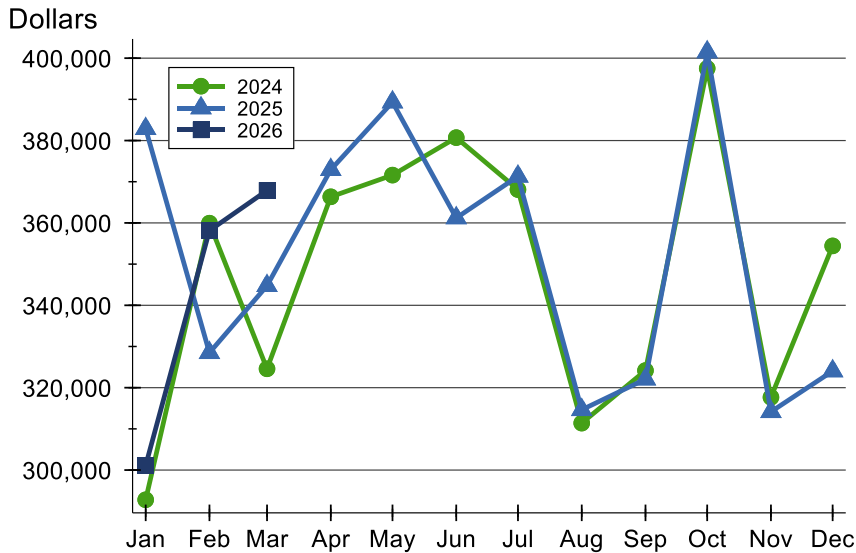
Contracts Written by Price Range

Price Range	Contracts Written		List Price		Days on Market		Price as % of Orig.	
	Number	Percent	Average	Median	Avg.	Med.	Avg.	Med.
Below \$25,000	0	0.0%	N/A	N/A	N/A	N/A	N/A	N/A
\$25,000-\$49,999	0	0.0%	N/A	N/A	N/A	N/A	N/A	N/A
\$50,000-\$99,999	0	0.0%	N/A	N/A	N/A	N/A	N/A	N/A
\$100,000-\$124,999	0	0.0%	N/A	N/A	N/A	N/A	N/A	N/A
\$125,000-\$149,999	1	3.2%	149,900	149,900	26	26	88.7%	88.7%
\$150,000-\$174,999	0	0.0%	N/A	N/A	N/A	N/A	N/A	N/A
\$175,000-\$199,999	0	0.0%	N/A	N/A	N/A	N/A	N/A	N/A
\$200,000-\$249,999	1	3.2%	204,500	204,500	0	0	100.0%	100.0%
\$250,000-\$299,999	6	19.4%	264,000	255,000	15	16	100.0%	100.0%
\$300,000-\$399,999	13	41.9%	350,138	359,900	26	5	99.2%	100.0%
\$400,000-\$499,999	7	22.6%	441,986	425,000	41	11	99.2%	100.0%
\$500,000-\$749,999	3	9.7%	606,667	620,000	28	4	100.0%	100.0%
\$750,000-\$999,999	0	0.0%	N/A	N/A	N/A	N/A	N/A	N/A
\$1,000,000 and up	0	0.0%	N/A	N/A	N/A	N/A	N/A	N/A



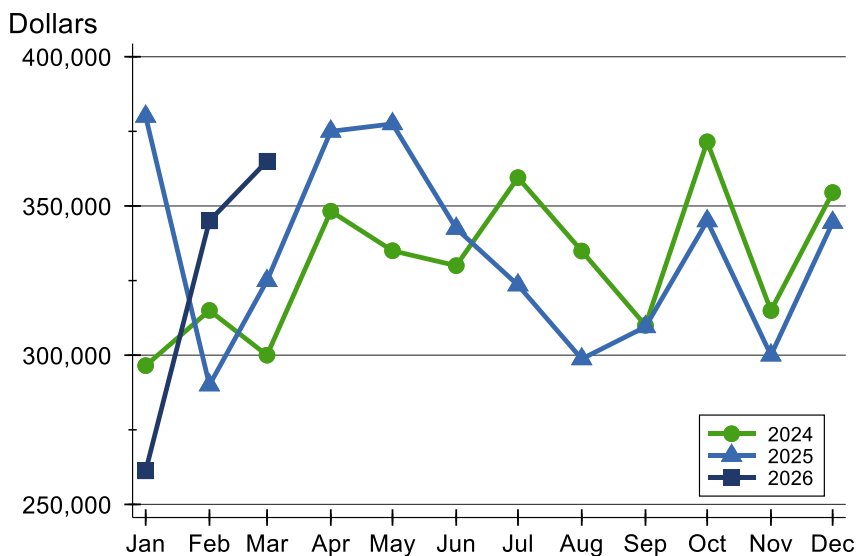
Pottawatomie County Contracts Written Analysis

Average Price



Month	2024	2025	2026
January	292,788	382,859	301,120
February	359,942	328,477	358,144
March	324,583	344,743	367,874
April	366,341	372,923	
May	371,615	389,329	
June	380,712	361,207	
July	368,096	371,308	
August	311,400	314,629	
September	324,163	322,063	
October	397,509	401,483	
November	317,669	314,147	
December	354,426	324,044	

Median Price

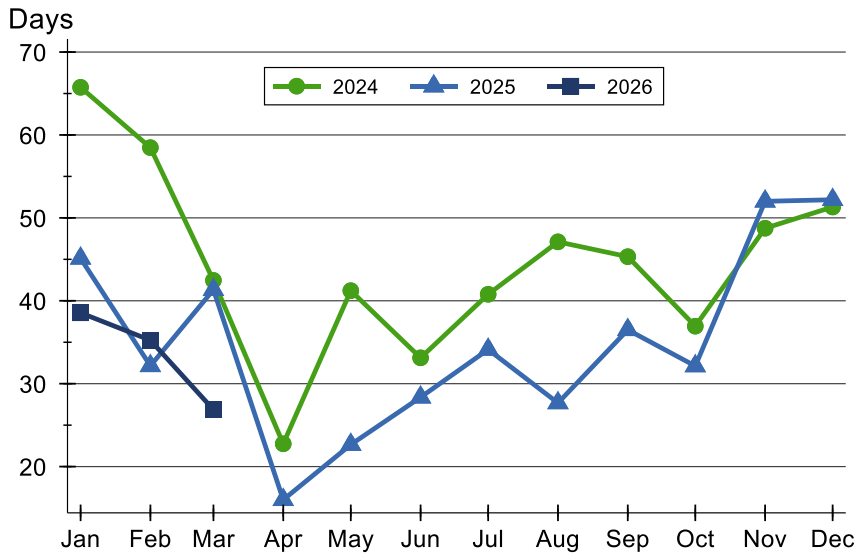


Month	2024	2025	2026
January	296,500	380,000	261,250
February	315,000	290,000	345,000
March	300,000	324,950	365,000
April	348,250	375,000	
May	335,000	377,500	
June	330,000	342,450	
July	359,500	323,500	
August	334,900	298,750	
September	310,000	309,500	
October	371,500	345,000	
November	314,950	300,000	
December	354,500	344,450	



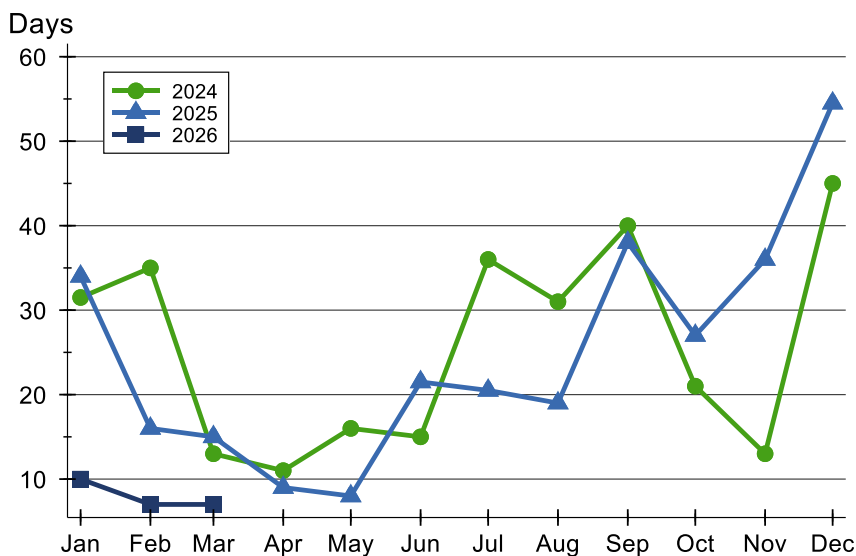
Pottawatomie County Contracts Written Analysis

Average DOM



Month	2024	2025	2026
January	66	45	39
February	58	32	35
March	42	41	27
April	23	16	
May	41	23	
June	33	28	
July	41	34	
August	47	28	
September	45	37	
October	37	32	
November	49	52	
December	51	52	

Median DOM



Month	2024	2025	2026
January	32	34	10
February	35	16	7
March	13	15	7
April	11	9	
May	16	8	
June	15	22	
July	36	21	
August	31	19	
September	40	38	
October	21	27	
November	13	36	
December	45	55	



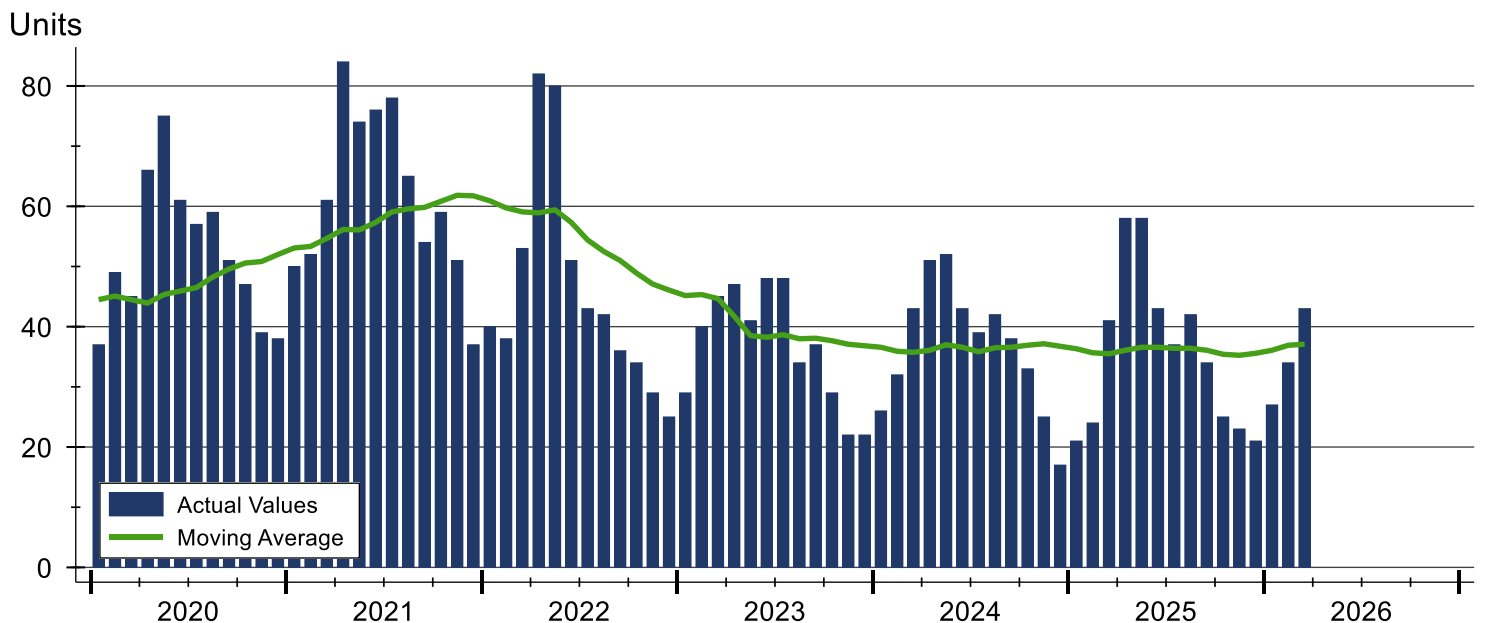
Pottawatomie County Pending Contracts Analysis

Summary Statistics for Pending Contracts		2026	End of March 2025	Change
Pending Contracts		43	41	4.9%
Volume (1,000s)		16,099	14,154	13.7%
Average	List Price	374,391	345,226	8.4%
	Days on Market	26	39	-33.3%
	Percent of Original	99.1%	98.9%	0.2%
Median	List Price	365,000	340,000	7.4%
	Days on Market	6	15	-60.0%
	Percent of Original	100.0%	100.0%	0.0%

A total of 43 listings in Pottawatomie County had contracts pending at the end of March, up from 41 contracts pending at the end of March 2025.

Pending contracts reflect listings with a contract in place at the end of the month. In contrast, contracts written measures the number of listings put under contract during the month.

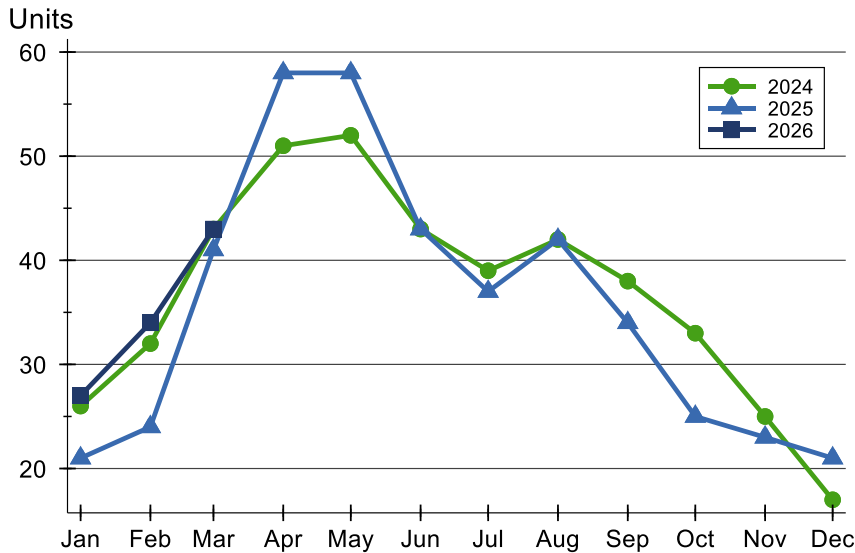
History of Pending Contracts





Pottawatomie County Pending Contracts Analysis

Pending Contracts by Month



Month	2024	2025	2026
January	26	21	27
February	32	24	34
March	43	41	43
April	51	58	
May	52	58	
June	43	43	
July	39	37	
August	42	42	
September	38	34	
October	33	25	
November	25	23	
December	17	21	

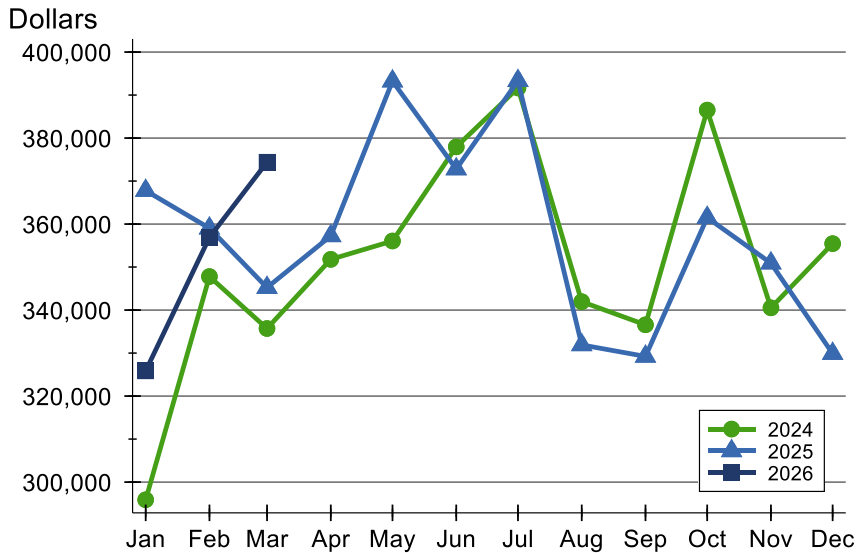
Pending Contracts by Price Range

Price Range	Pending Contracts		List Price		Days on Market		Price as % of Orig.	
	Number	Percent	Average	Median	Avg.	Med.	Avg.	Med.
Below \$25,000	0	0.0%	N/A	N/A	N/A	N/A	N/A	N/A
\$25,000-\$49,999	0	0.0%	N/A	N/A	N/A	N/A	N/A	N/A
\$50,000-\$99,999	0	0.0%	N/A	N/A	N/A	N/A	N/A	N/A
\$100,000-\$124,999	0	0.0%	N/A	N/A	N/A	N/A	N/A	N/A
\$125,000-\$149,999	1	2.3%	149,900	149,900	26	26	88.7%	88.7%
\$150,000-\$174,999	0	0.0%	N/A	N/A	N/A	N/A	N/A	N/A
\$175,000-\$199,999	0	0.0%	N/A	N/A	N/A	N/A	N/A	N/A
\$200,000-\$249,999	2	4.7%	217,250	217,250	9	9	100.0%	100.0%
\$250,000-\$299,999	7	16.3%	262,714	255,000	13	7	100.0%	100.0%
\$300,000-\$399,999	18	41.9%	353,644	352,450	26	7	99.2%	100.0%
\$400,000-\$499,999	11	25.6%	435,891	425,000	27	4	99.5%	100.0%
\$500,000-\$749,999	4	9.3%	628,750	635,000	53	42	98.6%	100.0%
\$750,000-\$999,999	0	0.0%	N/A	N/A	N/A	N/A	N/A	N/A
\$1,000,000 and up	0	0.0%	N/A	N/A	N/A	N/A	N/A	N/A



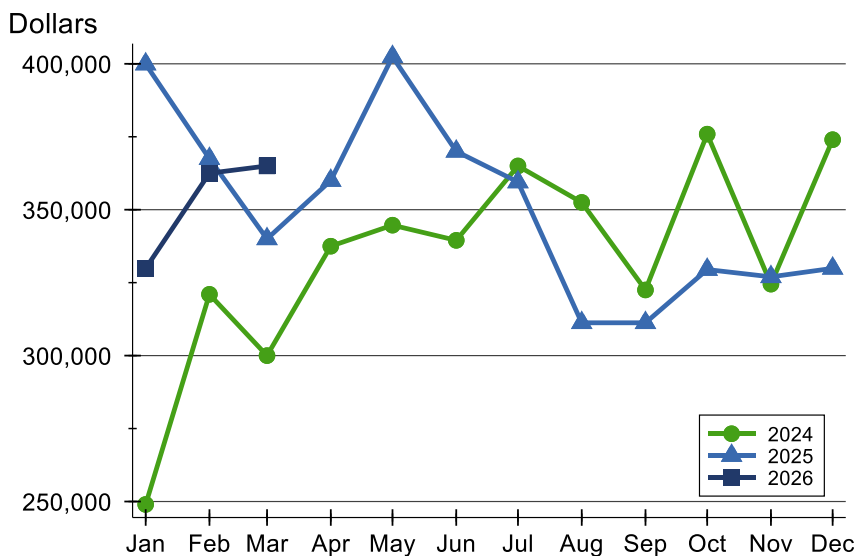
Pottawatomie County Pending Contracts Analysis

Average Price



Month	2024	2025	2026
January	295,888	367,788	325,856
February	347,797	359,038	356,903
March	335,716	345,226	374,391
April	351,796	357,247	
May	356,067	393,239	
June	377,952	372,798	
July	391,650	393,323	
August	341,955	331,900	
September	336,580	329,225	
October	386,509	361,510	
November	340,524	350,909	
December	355,451	329,876	

Median Price

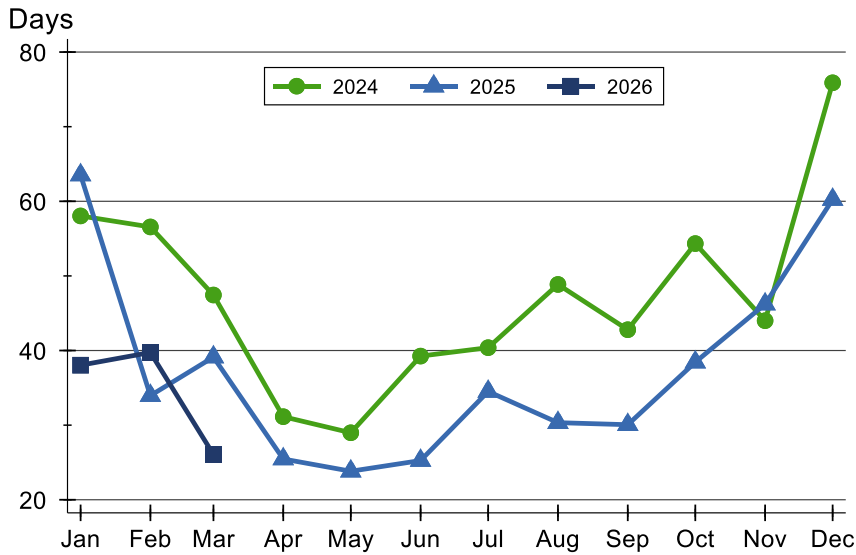


Month	2024	2025	2026
January	249,000	399,900	329,900
February	321,000	367,500	362,500
March	300,000	340,000	365,000
April	337,500	360,000	
May	344,700	402,425	
June	339,500	370,000	
July	365,000	359,500	
August	352,500	311,250	
September	322,500	311,250	
October	375,900	329,500	
November	324,500	327,000	
December	374,000	329,900	



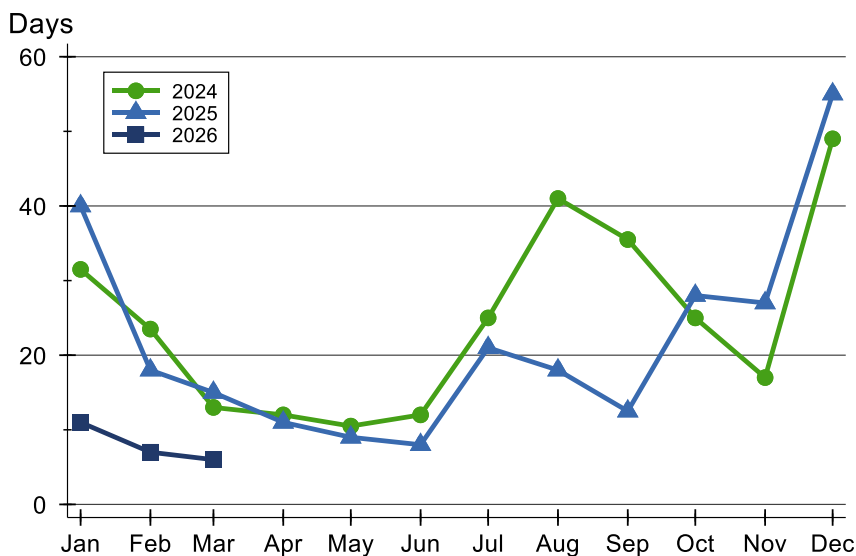
Pottawatomie County Pending Contracts Analysis

Average DOM



Month	2024	2025	2026
January	58	64	38
February	57	34	40
March	47	39	26
April	31	25	
May	29	24	
June	39	25	
July	40	35	
August	49	30	
September	43	30	
October	54	38	
November	44	46	
December	76	60	

Median DOM



Month	2024	2025	2026
January	32	40	11
February	24	18	7
March	13	15	6
April	12	11	
May	11	9	
June	12	8	
July	25	21	
August	41	18	
September	36	13	
October	25	28	
November	17	27	
December	49	55	