



**June  
2026**

# Flint Hills MLS Statistics



**FLINT HILLS  
ASSOCIATION  
OF REALTORS®**

## Pottawatomie County Housing Report



### Market Overview

#### Pottawatomie County Home Sales Rose in June

Total home sales in Pottawatomie County rose by 8.6% last month to 38 units, compared to 35 units in June 2025. Total sales volume was \$14.0 million, up 3.5% from a year earlier.

The median sale price in June was \$365,000, down from \$380,000 a year earlier. Homes that sold in June were typically on the market for 12 days and sold for 100.0% of their list prices.

#### Pottawatomie County Active Listings Up at End of June

The total number of active listings in Pottawatomie County at the end of June was 63 units, up from 43 at the same point in 2025. This represents a 2.5 months' supply of homes available for sale. The median list price of homes on the market at the end of June was \$354,000.

During June, a total of 23 contracts were written up from 22 in June 2025. At the end of the month, there were 42 contracts still pending.

### Report Contents

- Summary Statistics – Page 2
- Closed Listing Analysis – Page 3
- Active Listings Analysis – Page 7
- Months' Supply Analysis – Page 11
- New Listings Analysis – Page 12
- Contracts Written Analysis – Page 15
- Pending Contracts Analysis – Page 19

### Contact Information

Margaret Rezek, Association Executive  
 Flint Hills Association of REALTORS®  
 205 S. Seth Child Road  
 Manhattan, KS 66502  
 785-776-1203  
[ae@flinthillsrealtors.net](mailto:ae@flinthillsrealtors.net)  
[www.flinthillsrealtors.net](http://www.flinthillsrealtors.net)



**June  
2026**

# Flint Hills MLS Statistics



**FLINT HILLS  
ASSOCIATION  
OF REALTORS®**

## Pottawatomie County Summary Statistics

June MLS Statistics Three-year History		Current Month			Year-to-Date		
		2026	2025	2024	2026	2025	2024
<b>Home Sales</b>		<b>38</b>	<b>35</b>	<b>36</b>	<b>150</b>	<b>126</b>	<b>137</b>
Change from prior year		8.6%	-2.8%	5.9%	19.0%	-8.0%	-3.5%
<b>Active Listings</b>		<b>63</b>	<b>43</b>	<b>50</b>	<b>N/A</b>	<b>N/A</b>	<b>N/A</b>
Change from prior year		46.5%	-14.0%	-5.7%			
<b>Months' Supply</b>		<b>2.5</b>	<b>1.9</b>	<b>2.1</b>	<b>N/A</b>	<b>N/A</b>	<b>N/A</b>
Change from prior year		31.6%	-9.5%	0.0%			
<b>New Listings</b>		<b>37</b>	<b>30</b>	<b>33</b>	<b>244</b>	<b>182</b>	<b>208</b>
Change from prior year		23.3%	-9.1%	-15.4%	34.1%	-12.5%	3.5%
<b>Contracts Written</b>		<b>23</b>	<b>22</b>	<b>25</b>	<b>172</b>	<b>148</b>	<b>154</b>
Change from prior year		4.5%	-12.0%	-26.5%	16.2%	-3.9%	-4.9%
<b>Pending Contracts</b>		<b>42</b>	<b>43</b>	<b>43</b>	<b>N/A</b>	<b>N/A</b>	<b>N/A</b>
Change from prior year		-2.3%	0.0%	-10.4%			
<b>Sales Volume (1,000s)</b>		<b>14,006</b>	<b>13,536</b>	<b>12,321</b>	<b>52,121</b>	<b>44,673</b>	<b>44,603</b>
Change from prior year		3.5%	9.9%	5.9%	16.7%	0.2%	-3.6%
Average	<b>Sale Price</b>	<b>368,566</b>	<b>386,738</b>	<b>342,261</b>	<b>347,470</b>	<b>354,544</b>	<b>325,566</b>
	Change from prior year	-4.7%	13.0%	0.0%	-2.0%	8.9%	-0.1%
	<b>List Price of Actives</b>	<b>450,186</b>	<b>379,366</b>	<b>399,586</b>	<b>N/A</b>	<b>N/A</b>	<b>N/A</b>
	Change from prior year	18.7%	-5.1%	-3.2%			
	<b>Days on Market</b>	<b>15</b>	<b>25</b>	<b>25</b>	<b>28</b>	<b>37</b>	<b>43</b>
Change from prior year	-40.0%	0.0%	-58.3%	-24.3%	-14.0%	-17.3%	
	<b>Percent of List</b>	<b>99.5%</b>	<b>99.6%</b>	<b>98.5%</b>	<b>98.5%</b>	<b>99.8%</b>	<b>98.9%</b>
Change from prior year	-0.1%	1.1%	-1.2%	-1.3%	0.9%	-0.6%	
	<b>Percent of Original</b>	<b>98.7%</b>	<b>99.0%</b>	<b>97.4%</b>	<b>97.2%</b>	<b>98.9%</b>	<b>97.6%</b>
Change from prior year	-0.3%	1.6%	-0.2%	-1.7%	1.3%	-0.2%	
Median	<b>Sale Price</b>	<b>365,000</b>	<b>380,000</b>	<b>327,500</b>	<b>345,000</b>	<b>343,000</b>	<b>315,000</b>
	Change from prior year	-3.9%	16.0%	-5.1%	0.6%	8.9%	-3.1%
	<b>List Price of Actives</b>	<b>354,000</b>	<b>340,000</b>	<b>362,000</b>	<b>N/A</b>	<b>N/A</b>	<b>N/A</b>
	Change from prior year	4.1%	-6.1%	-0.8%			
	<b>Days on Market</b>	<b>12</b>	<b>9</b>	<b>14</b>	<b>12</b>	<b>17</b>	<b>18</b>
Change from prior year	33.3%	-35.7%	-51.7%	-29.4%	-5.6%	-10.0%	
	<b>Percent of List</b>	<b>100.0%</b>	<b>100.0%</b>	<b>99.5%</b>	<b>99.9%</b>	<b>100.0%</b>	<b>100.0%</b>
Change from prior year	0.0%	0.5%	-0.5%	-0.1%	0.0%	0.0%	
	<b>Percent of Original</b>	<b>99.8%</b>	<b>100.0%</b>	<b>98.1%</b>	<b>99.0%</b>	<b>99.8%</b>	<b>98.7%</b>
Change from prior year	-0.2%	1.9%	-1.9%	-0.8%	1.1%	-1.2%	

Note: Year-to-date statistics cannot be calculated for Active Listings, Months' Supply and Pending Contracts.



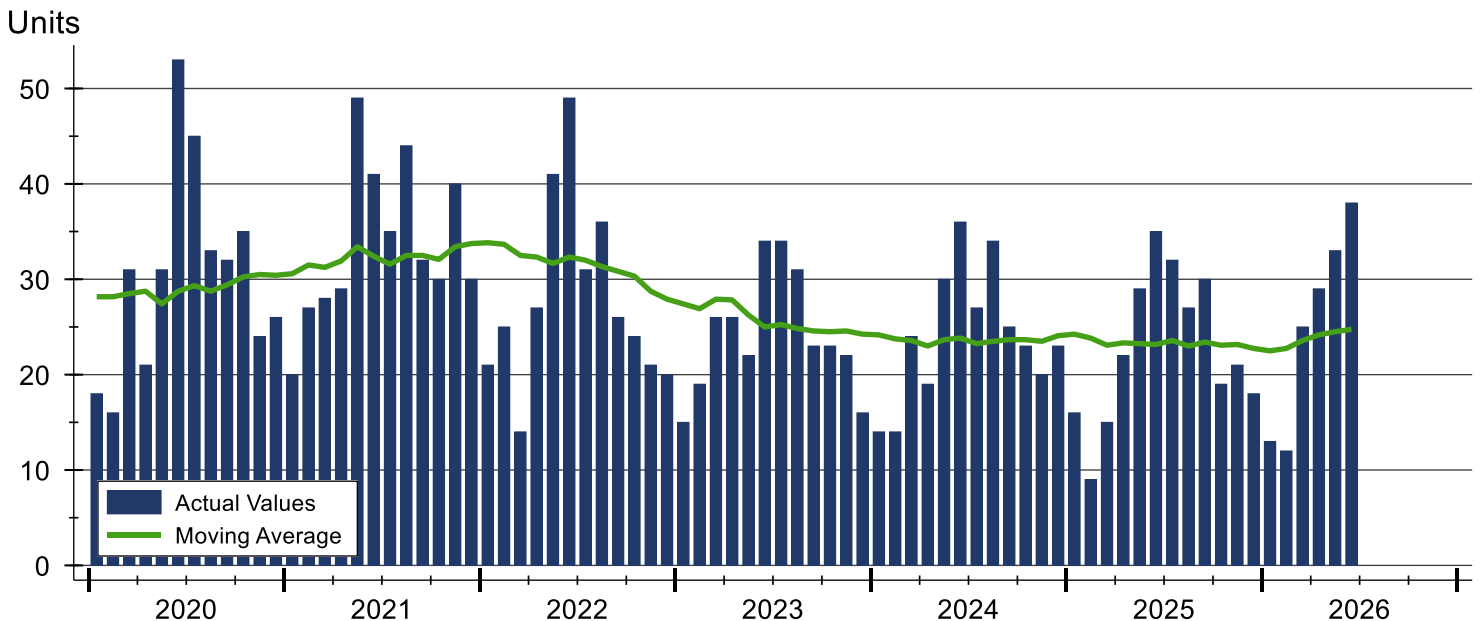
# Pottawatomie County Closed Listings Analysis

Summary Statistics for Closed Listings		2026	June 2025	Change	2026	Year-to-Date 2025	Change
Closed Listings		38	35	8.6%	150	126	19.0%
Volume (1,000s)		14,006	13,536	3.5%	52,121	44,673	16.7%
Months' Supply		2.5	1.9	31.6%	N/A	N/A	N/A
Average	Sale Price	368,566	386,738	-4.7%	347,470	354,544	-2.0%
	Days on Market	15	25	-40.0%	28	37	-24.3%
	Percent of List	99.5%	99.6%	-0.1%	98.5%	99.8%	-1.3%
	Percent of Original	98.7%	99.0%	-0.3%	97.2%	98.9%	-1.7%
Median	Sale Price	365,000	380,000	-3.9%	345,000	343,000	0.6%
	Days on Market	12	9	33.3%	12	17	-29.4%
	Percent of List	100.0%	100.0%	0.0%	99.9%	100.0%	-0.1%
	Percent of Original	99.8%	100.0%	-0.2%	99.0%	99.8%	-0.8%

A total of 38 homes sold in Pottawatomie County in June, up from 35 units in June 2025. Total sales volume rose to \$14.0 million compared to \$13.5 million in the previous year.

The median sales price in June was \$365,000, down 3.9% compared to the prior year. Median days on market was 12 days, down from 13 days in May, but up from 9 in June 2025.

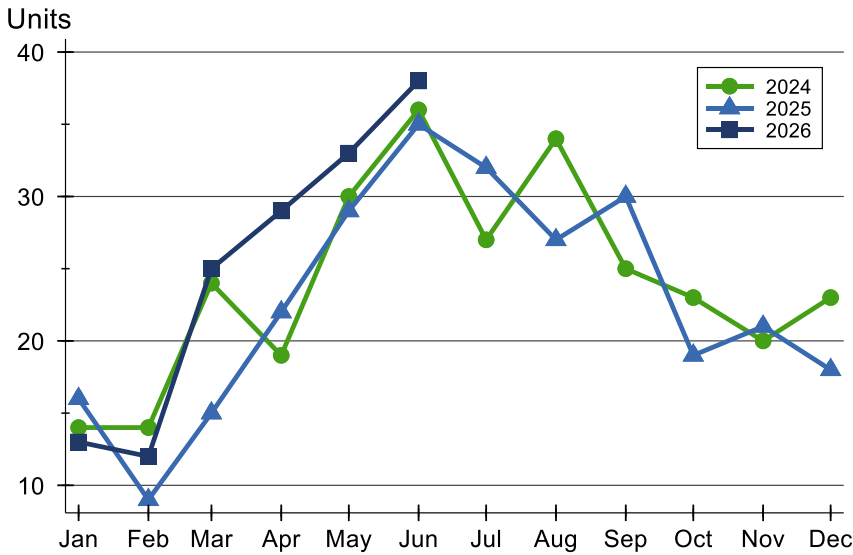
## History of Closed Listings





## Pottawatomie County Closed Listings Analysis

### Closed Listings by Month



Month	2024	2025	2026
January	14	16	13
February	14	9	12
March	24	15	25
April	19	22	29
May	30	29	33
June	36	35	38
July	27	32	
August	34	27	
September	25	30	
October	23	19	
November	20	21	
December	23	18	

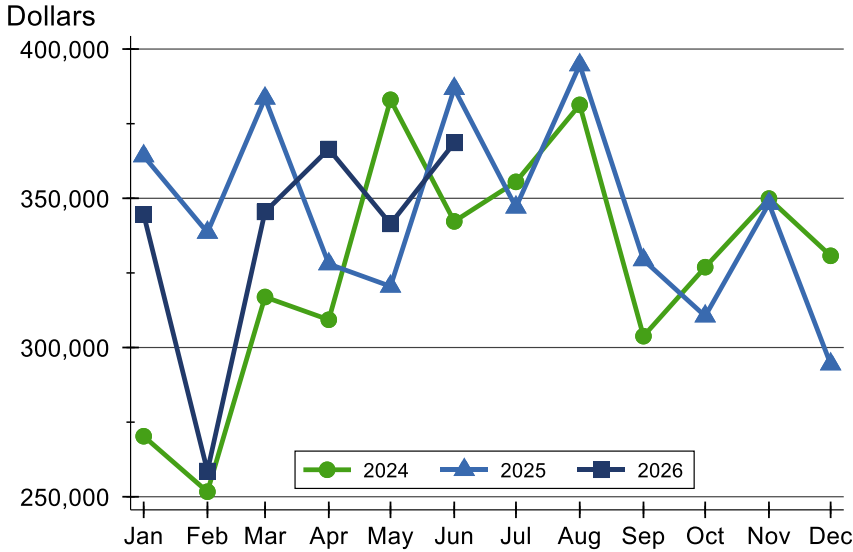
### Closed Listings by Price Range

Price Range	Sales		Months' Supply	Sale Price		Days on Market		Price as % of List		Price as % of Orig.	
	Number	Percent		Average	Median	Avg.	Med.	Avg.	Med.	Avg.	Med.
Below \$25,000	0	0.0%	N/A	N/A	N/A	N/A	N/A	N/A	N/A	N/A	N/A
\$25,000-\$49,999	0	0.0%	N/A	N/A	N/A	N/A	N/A	N/A	N/A	N/A	N/A
\$50,000-\$99,999	0	0.0%	N/A	N/A	N/A	N/A	N/A	N/A	N/A	N/A	N/A
\$100,000-\$124,999	0	0.0%	N/A	N/A	N/A	N/A	N/A	N/A	N/A	N/A	N/A
\$125,000-\$149,999	1	2.6%	0.0	144,900	144,900	26	26	96.7%	96.7%	85.7%	85.7%
\$150,000-\$174,999	0	0.0%	N/A	N/A	N/A	N/A	N/A	N/A	N/A	N/A	N/A
\$175,000-\$199,999	3	7.9%	1.5	182,833	182,000	22	17	100.8%	100.0%	100.8%	100.0%
\$200,000-\$249,999	2	5.3%	1.0	232,450	232,450	16	16	98.9%	98.9%	98.9%	98.9%
\$250,000-\$299,999	4	10.5%	2.8	285,000	290,000	14	5	99.6%	100.0%	99.6%	100.0%
\$300,000-\$399,999	16	42.1%	3.2	358,113	356,850	10	9	99.4%	99.5%	99.0%	99.5%
\$400,000-\$499,999	7	18.4%	2.2	425,643	420,000	10	8	99.3%	99.5%	99.3%	99.5%
\$500,000-\$749,999	5	13.2%	2.3	599,580	588,000	30	37	99.9%	100.0%	97.7%	100.0%
\$750,000-\$999,999	0	0.0%	N/A	N/A	N/A	N/A	N/A	N/A	N/A	N/A	N/A
\$1,000,000 and up	0	0.0%	N/A	N/A	N/A	N/A	N/A	N/A	N/A	N/A	N/A



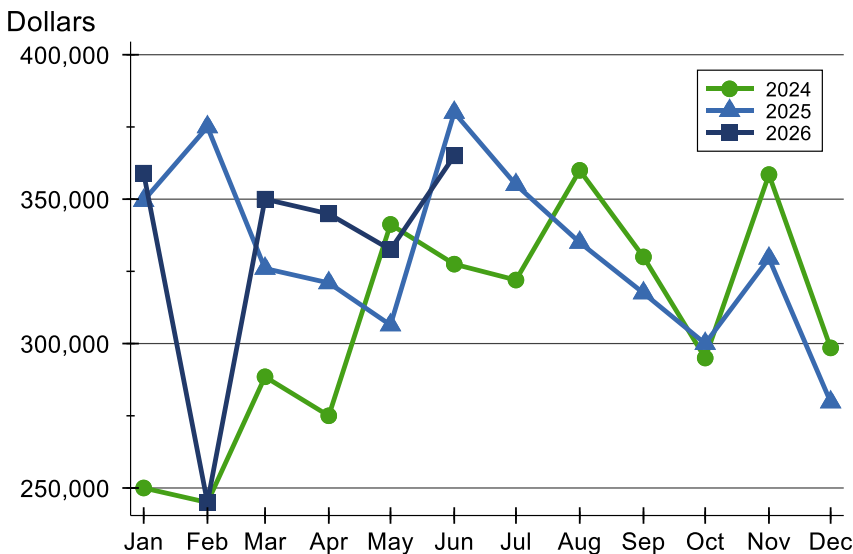
# Pottawatomie County Closed Listings Analysis

## Average Price



Month	2024	2025	2026
January	270,281	364,181	<b>344,592</b>
February	251,689	338,544	<b>258,625</b>
March	316,938	383,500	<b>345,446</b>
April	309,311	327,993	<b>366,500</b>
May	383,004	320,503	<b>341,430</b>
June	342,261	386,738	<b>368,566</b>
July	355,507	346,994	
August	381,306	394,678	
September	303,804	329,360	
October	326,926	310,514	
November	349,902	348,233	
December	330,731	294,451	

## Median Price

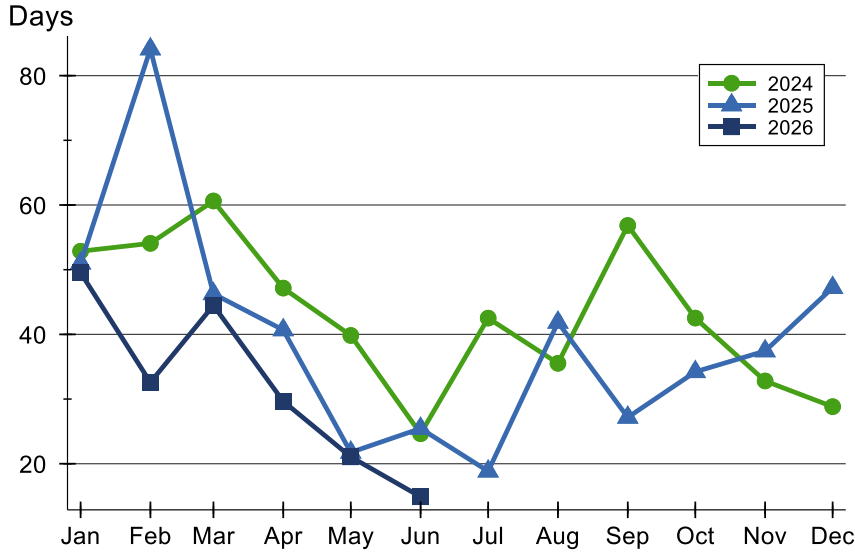


Month	2024	2025	2026
January	250,000	349,500	<b>359,000</b>
February	245,000	375,000	<b>245,000</b>
March	288,500	326,000	<b>350,000</b>
April	275,000	321,000	<b>344,900</b>
May	341,250	306,425	<b>332,500</b>
June	327,500	380,000	<b>365,000</b>
July	322,000	355,000	
August	359,975	335,000	
September	330,000	317,500	
October	295,000	300,000	
November	358,500	329,500	
December	298,500	279,750	



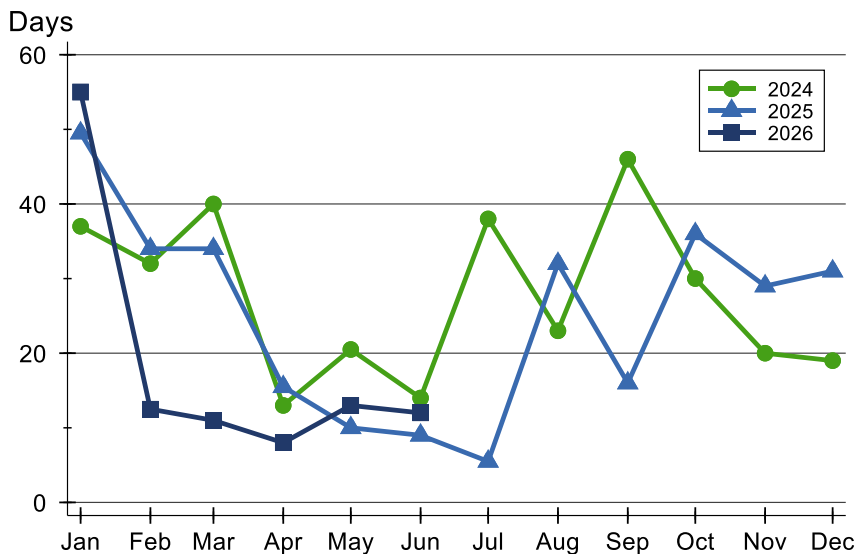
## Pottawatomie County Closed Listings Analysis

### Average DOM



Month	2024	2025	2026
January	53	51	50
February	54	84	33
March	61	46	44
April	47	41	30
May	40	22	21
June	25	25	15
July	43	19	
August	36	42	
September	57	27	
October	43	34	
November	33	37	
December	29	47	

### Median DOM



Month	2024	2025	2026
January	37	50	55
February	32	34	13
March	40	34	11
April	13	16	8
May	21	10	13
June	14	9	12
July	38	6	
August	23	32	
September	46	16	
October	30	36	
November	20	29	
December	19	31	



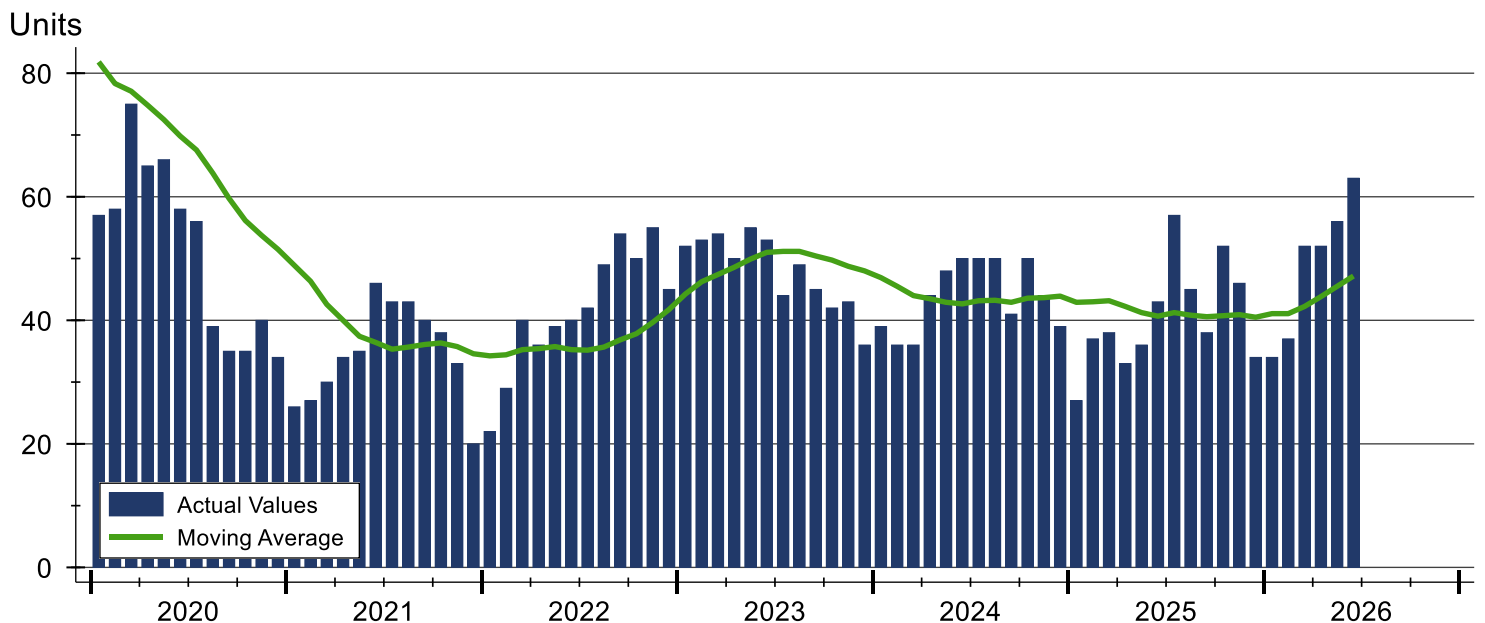
# Pottawatomie County Active Listings Analysis

Summary Statistics for Active Listings		2026	End of June 2025	Change
Active Listings		<b>63</b>	43	46.5%
Volume (1,000s)		<b>28,362</b>	16,313	73.9%
Months' Supply		<b>2.5</b>	1.9	31.6%
Average	List Price	<b>450,186</b>	379,366	18.7%
	Days on Market	<b>33</b>	49	-32.7%
	Percent of Original	<b>98.7%</b>	97.6%	1.1%
Median	List Price	<b>354,000</b>	340,000	4.1%
	Days on Market	<b>15</b>	27	-44.4%
	Percent of Original	<b>100.0%</b>	100.0%	0.0%

A total of 63 homes were available for sale in Pottawatomie County at the end of June. This represents a 2.5 months' supply of active listings.

The median list price of homes on the market at the end of June was \$354,000, up 4.1% from 2025. The typical time on market for active listings was 15 days, down from 27 days a year earlier.

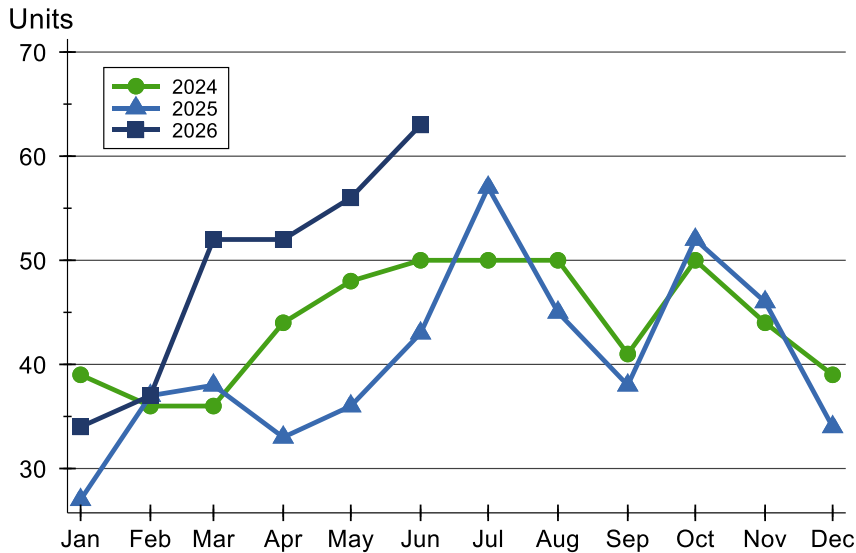
## History of Active Listings





## Pottawatomie County Active Listings Analysis

### Active Listings by Month



Month	2024	2025	2026
<b>January</b>	39	27	<b>34</b>
<b>February</b>	36	37	<b>37</b>
<b>March</b>	36	38	<b>52</b>
<b>April</b>	44	33	<b>52</b>
<b>May</b>	48	36	<b>56</b>
<b>June</b>	50	43	<b>63</b>
<b>July</b>	50	57	
<b>August</b>	50	45	
<b>September</b>	41	38	
<b>October</b>	50	52	
<b>November</b>	44	46	
<b>December</b>	39	34	

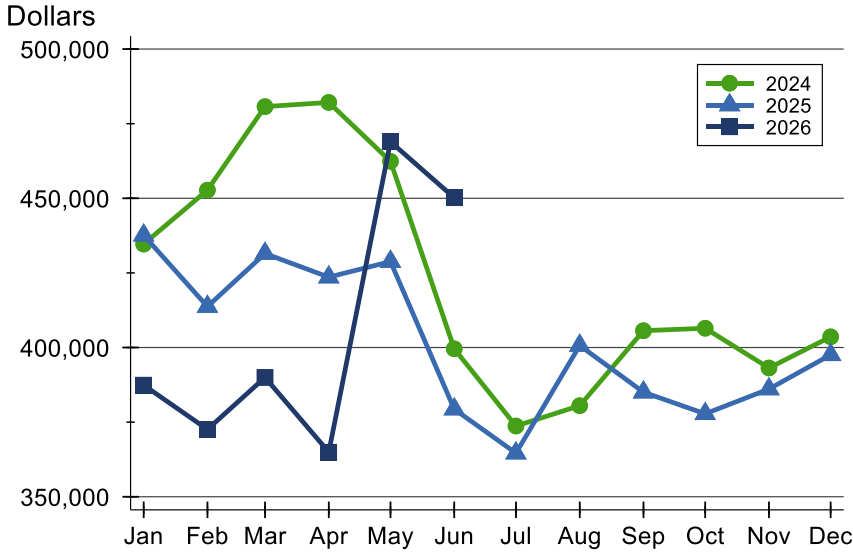
### Active Listings by Price Range

Price Range	Active Listings		Months' Supply	List Price		Days on Market		Price as % of Orig.	
	Number	Percent		Average	Median	Avg.	Med.	Avg.	Med.
Below \$25,000	0	0.0%	N/A	N/A	N/A	N/A	N/A	N/A	N/A
\$25,000-\$49,999	0	0.0%	N/A	N/A	N/A	N/A	N/A	N/A	N/A
\$50,000-\$99,999	1	1.6%	N/A	64,900	64,900	15	15	100.0%	100.0%
\$100,000-\$124,999	1	1.6%	N/A	120,000	120,000	70	70	85.7%	85.7%
\$125,000-\$149,999	0	0.0%	0.0	N/A	N/A	N/A	N/A	N/A	N/A
\$150,000-\$174,999	2	3.2%	N/A	167,200	167,200	35	35	100.0%	100.0%
\$175,000-\$199,999	1	1.6%	1.5	175,000	175,000	41	41	97.3%	97.3%
\$200,000-\$249,999	3	4.8%	1.0	228,000	235,000	47	16	97.8%	100.0%
\$250,000-\$299,999	10	15.9%	2.8	282,090	287,500	33	7	98.9%	100.0%
\$300,000-\$399,999	26	41.3%	3.2	350,969	351,950	34	29	98.4%	99.8%
\$400,000-\$499,999	11	17.5%	2.2	440,300	435,000	26	6	99.7%	100.0%
\$500,000-\$749,999	4	6.3%	2.3	562,250	534,500	13	6	100.0%	100.0%
\$750,000-\$999,999	1	1.6%	N/A	755,000	755,000	68	68	100.0%	100.0%
\$1,000,000 and up	3	4.8%	N/A	2,396,667	1,490,000	43	21	100.0%	100.0%



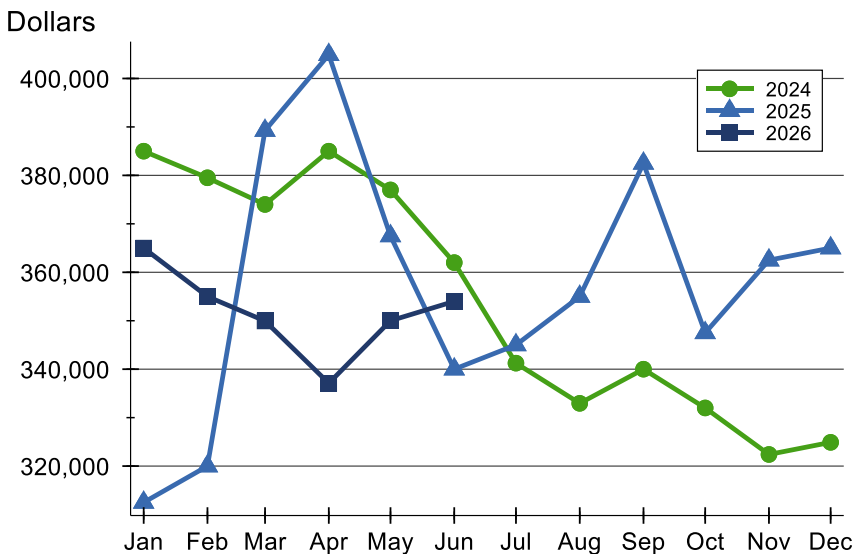
## Pottawatomie County Active Listings Analysis

### Average Price



Month	2024	2025	2026
<b>January</b>	434,659	437,624	<b>387,415</b>
<b>February</b>	452,747	413,734	<b>372,573</b>
<b>March</b>	480,714	431,498	<b>389,987</b>
<b>April</b>	482,127	423,592	<b>364,965</b>
<b>May</b>	462,386	428,804	<b>468,946</b>
<b>June</b>	399,586	379,366	<b>450,186</b>
<b>July</b>	373,705	364,618	
<b>August</b>	380,508	400,684	
<b>September</b>	405,635	385,046	
<b>October</b>	406,458	377,808	
<b>November</b>	393,149	386,098	
<b>December</b>	403,595	397,565	

### Median Price

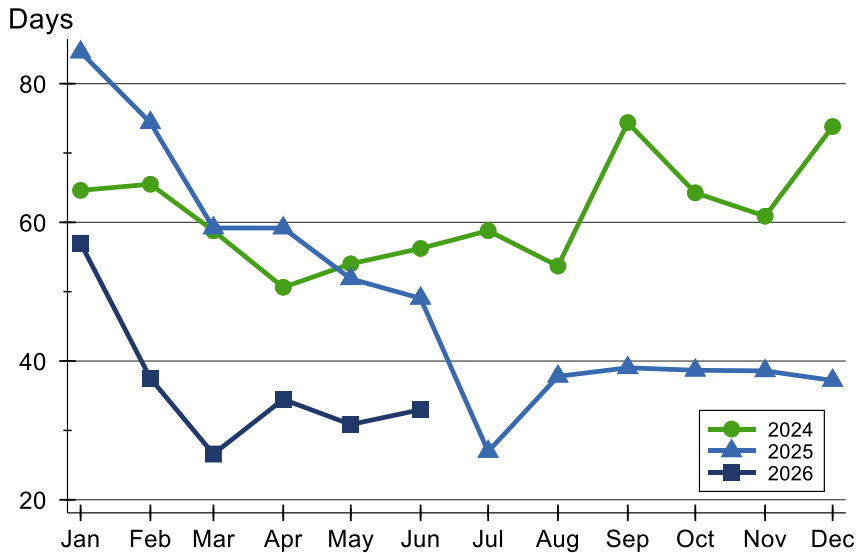


Month	2024	2025	2026
<b>January</b>	385,000	312,500	<b>365,000</b>
<b>February</b>	379,500	320,000	<b>355,000</b>
<b>March</b>	374,000	389,250	<b>349,950</b>
<b>April</b>	385,000	404,900	<b>337,100</b>
<b>May</b>	377,000	367,500	<b>350,000</b>
<b>June</b>	362,000	340,000	<b>354,000</b>
<b>July</b>	341,250	345,000	
<b>August</b>	332,950	355,000	
<b>September</b>	340,000	382,475	
<b>October</b>	332,000	347,500	
<b>November</b>	322,400	362,500	
<b>December</b>	324,900	365,000	



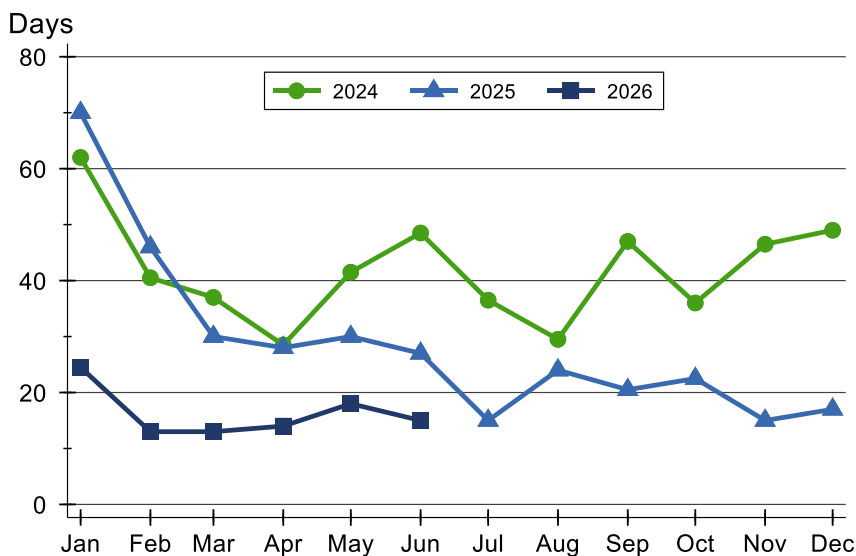
## Pottawatomie County Active Listings Analysis

### Average DOM



Month	2024	2025	2026
January	65	85	<b>57</b>
February	66	74	<b>38</b>
March	59	59	<b>27</b>
April	51	59	<b>34</b>
May	54	52	<b>31</b>
June	56	49	<b>33</b>
July	59	27	
August	54	38	
September	74	39	
October	64	39	
November	61	39	
December	74	37	

### Median DOM

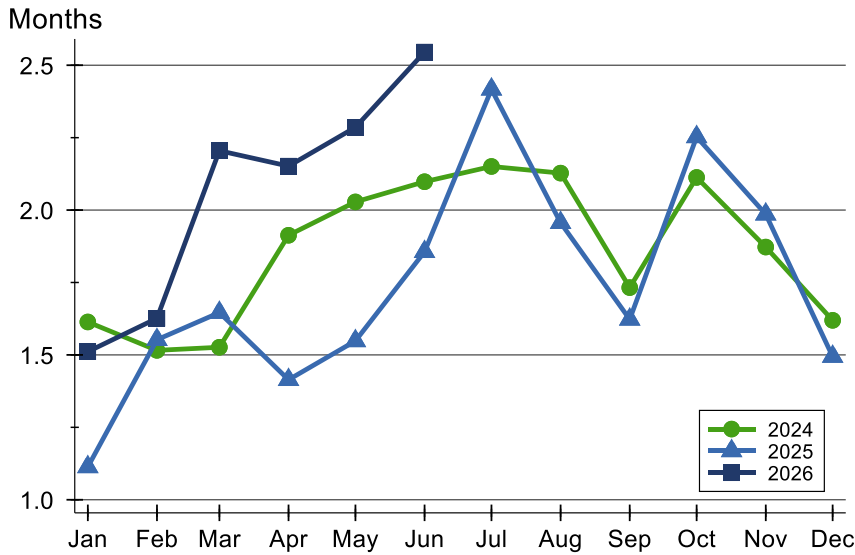


Month	2024	2025	2026
January	62	70	<b>25</b>
February	41	46	<b>13</b>
March	37	30	<b>13</b>
April	29	28	<b>14</b>
May	42	30	<b>18</b>
June	49	27	<b>15</b>
July	37	15	
August	30	24	
September	47	21	
October	36	23	
November	47	15	
December	49	17	



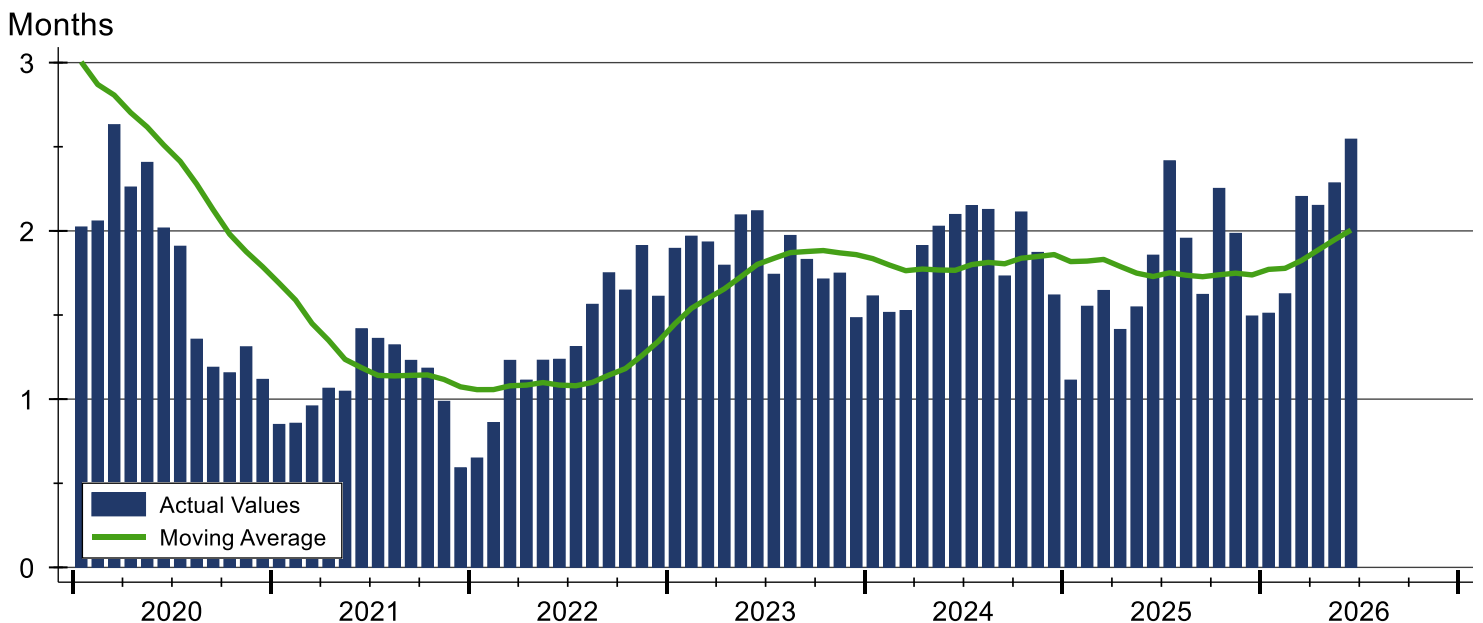
# Pottawatomie County Months' Supply Analysis

## Months' Supply by Month



Month	2024	2025	2026
January	1.6	1.1	1.5
February	1.5	1.6	1.6
March	1.5	1.6	2.2
April	1.9	1.4	2.2
May	2.0	1.5	2.3
June	2.1	1.9	2.5
July	2.2	2.4	
August	2.1	2.0	
September	1.7	1.6	
October	2.1	2.3	
November	1.9	2.0	
December	1.6	1.5	

## History of Month's Supply





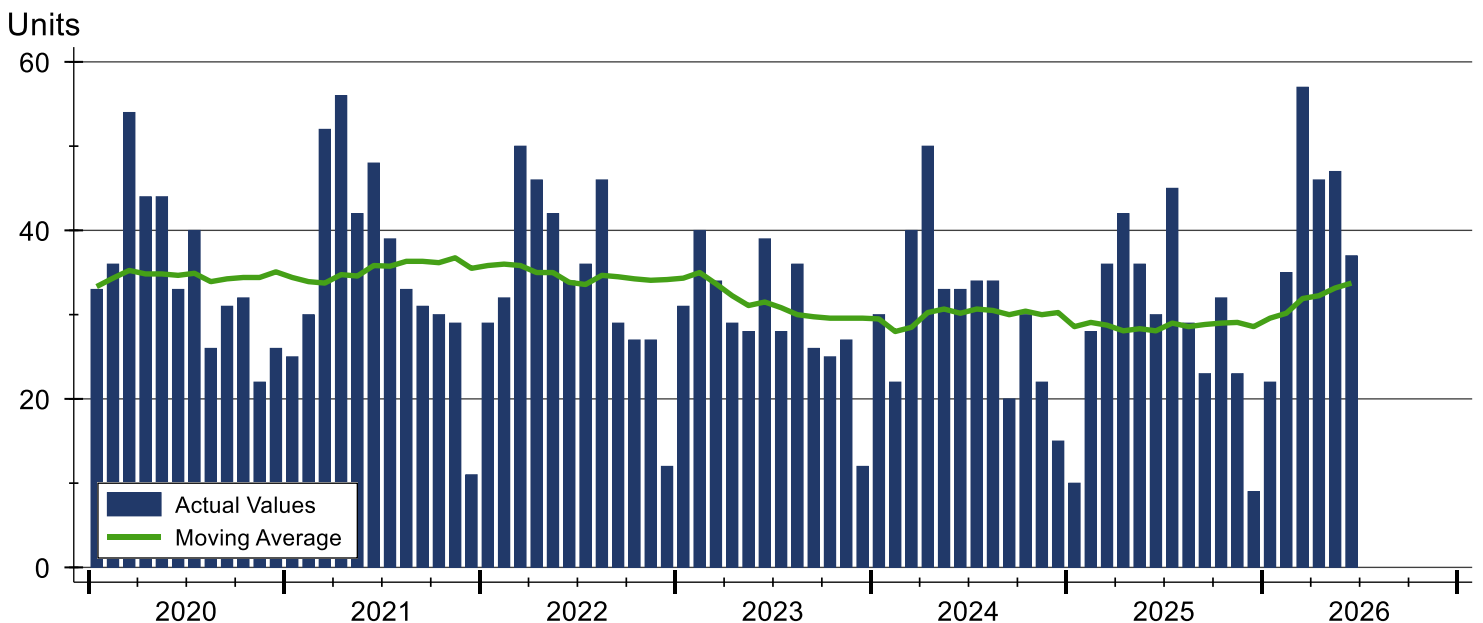
# Pottawatomie County New Listings Analysis

Summary Statistics for New Listings		2026	June 2025	Change
Current Month	New Listings	<b>37</b>	30	23.3%
	Volume (1,000s)	<b>14,453</b>	9,310	55.2%
	Average List Price	<b>390,634</b>	310,320	25.9%
	Median List Price	<b>385,000</b>	307,500	25.2%
Year-to-Date	New Listings	<b>244</b>	182	34.1%
	Volume (1,000s)	<b>97,860</b>	66,260	47.7%
	Average List Price	<b>401,066</b>	364,065	10.2%
	Median List Price	<b>349,000</b>	359,950	-3.0%

A total of 37 new listings were added in Pottawatomie County during June, up 23.3% from the same month in 2025. Year-to-date Pottawatomie County has seen 244 new listings.

The median list price of these homes was \$385,000 up from \$307,500 in 2025.

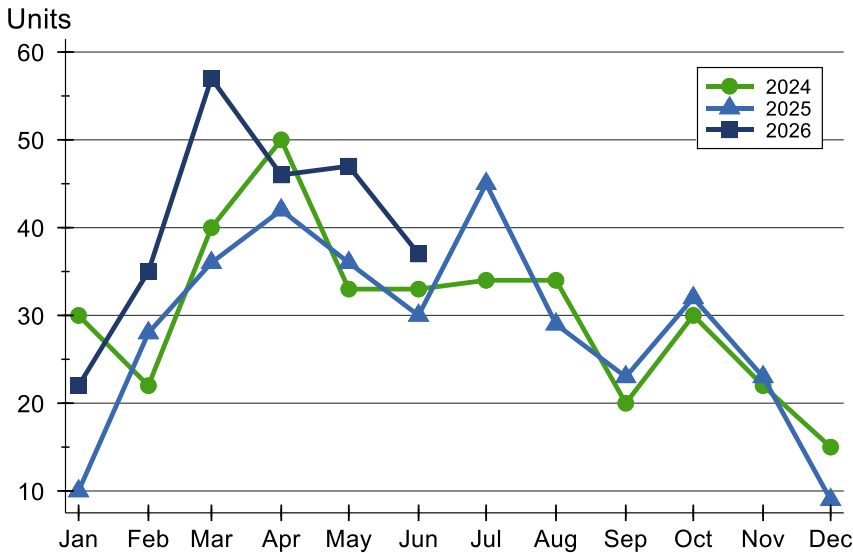
## History of New Listings





## Pottawatomie County New Listings Analysis

### New Listings by Month



Month	2024	2025	2026
<b>January</b>	30	10	<b>22</b>
<b>February</b>	22	28	<b>35</b>
<b>March</b>	40	36	<b>57</b>
<b>April</b>	50	42	<b>46</b>
<b>May</b>	33	36	<b>47</b>
<b>June</b>	33	30	<b>37</b>
<b>July</b>	34	45	
<b>August</b>	34	29	
<b>September</b>	20	23	
<b>October</b>	30	32	
<b>November</b>	22	23	
<b>December</b>	15	9	

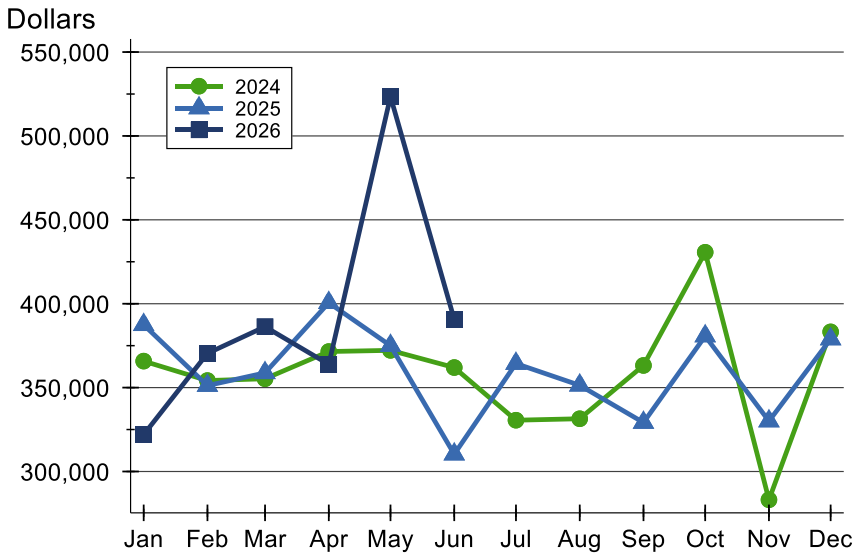
### New Listings by Price Range

Price Range	New Listings		List Price		Days on Market		Price as % of Orig.	
	Number	Percent	Average	Median	Avg.	Med.	Avg.	Med.
Below \$25,000	0	0.0%	N/A	N/A	N/A	N/A	N/A	N/A
\$25,000-\$49,999	0	0.0%	N/A	N/A	N/A	N/A	N/A	N/A
\$50,000-\$99,999	0	0.0%	N/A	N/A	N/A	N/A	N/A	N/A
\$100,000-\$124,999	0	0.0%	N/A	N/A	N/A	N/A	N/A	N/A
\$125,000-\$149,999	1	2.7%	127,500	127,500	3	3	100.0%	100.0%
\$150,000-\$174,999	1	2.7%	169,400	169,400	5	5	100.0%	100.0%
\$175,000-\$199,999	0	0.0%	N/A	N/A	N/A	N/A	N/A	N/A
\$200,000-\$249,999	4	10.8%	240,500	239,000	9	10	100.0%	100.0%
\$250,000-\$299,999	2	5.4%	277,500	277,500	6	6	100.0%	100.0%
\$300,000-\$399,999	15	40.5%	362,413	360,000	9	7	99.6%	100.0%
\$400,000-\$499,999	8	21.6%	434,181	429,500	7	7	99.9%	100.0%
\$500,000-\$749,999	5	13.5%	555,980	549,900	6	5	100.0%	100.0%
\$750,000-\$999,999	1	2.7%	950,000	950,000	6	6	100.0%	100.0%
\$1,000,000 and up	0	0.0%	N/A	N/A	N/A	N/A	N/A	N/A



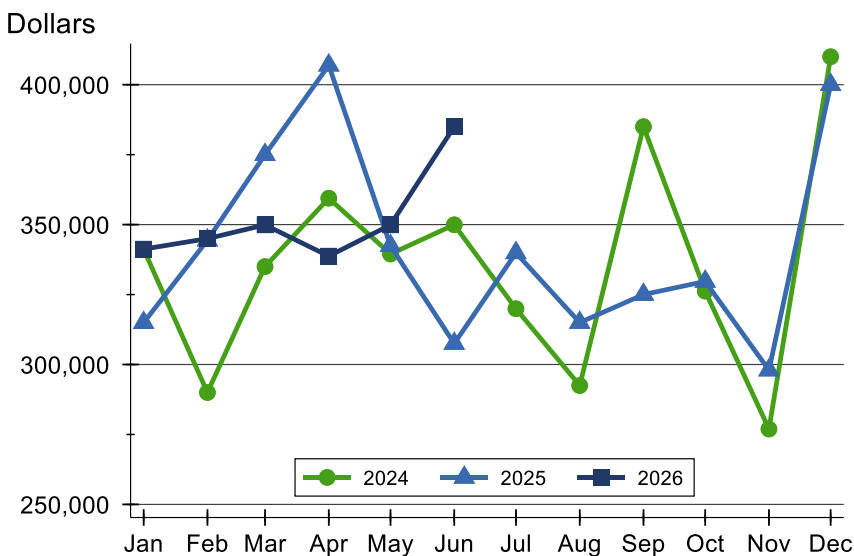
## Pottawatomie County New Listings Analysis

### Average Price



Month	2024	2025	2026
January	365,790	387,460	<b>321,991</b>
February	354,200	351,213	<b>370,394</b>
March	355,278	358,800	<b>386,296</b>
April	371,502	400,583	<b>363,865</b>
May	372,205	375,011	<b>523,453</b>
June	361,974	310,320	<b>390,634</b>
July	330,579	364,328	
August	331,443	351,374	
September	363,213	329,183	
October	430,667	380,731	
November	283,149	330,052	
December	383,227	378,933	

### Median Price



Month	2024	2025	2026
January	341,200	314,950	<b>341,250</b>
February	290,000	344,450	<b>345,000</b>
March	335,000	375,000	<b>349,900</b>
April	359,450	406,950	<b>338,750</b>
May	339,500	342,450	<b>349,900</b>
June	349,950	307,500	<b>385,000</b>
July	319,950	339,900	
August	292,500	315,000	
September	385,000	325,000	
October	326,250	329,700	
November	276,950	298,000	
December	410,000	400,000	



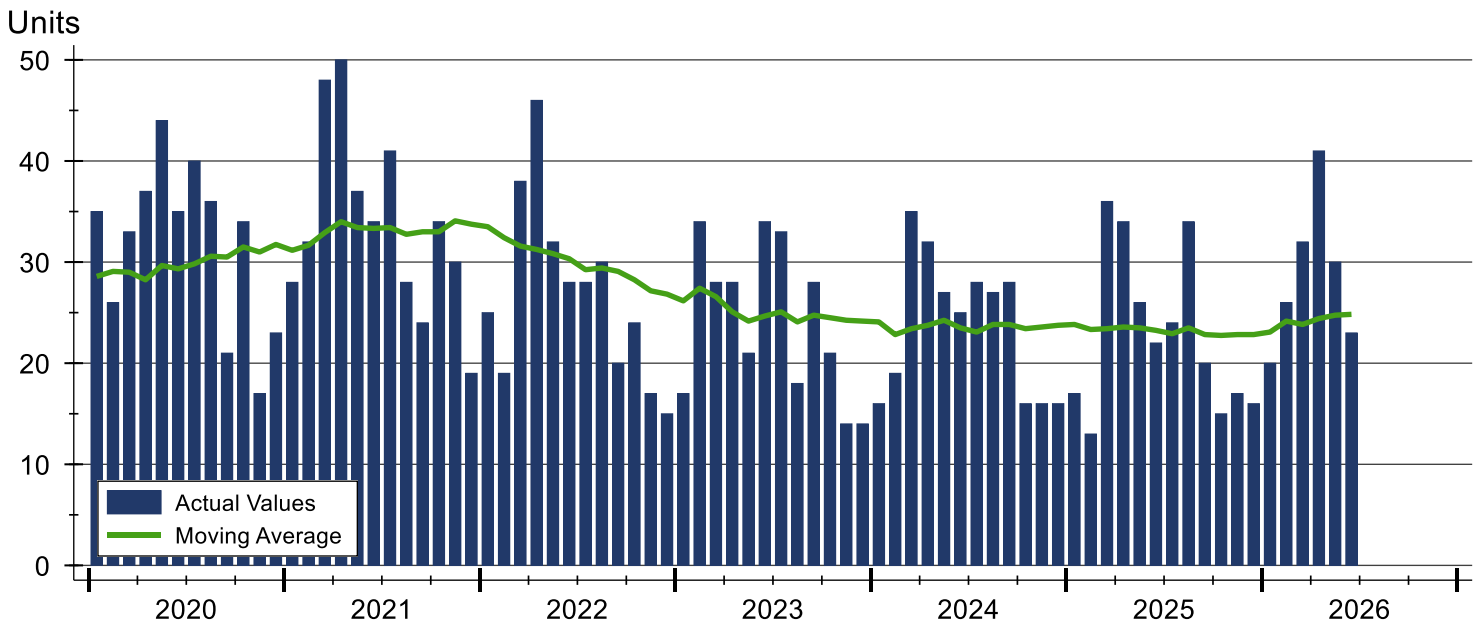
# Pottawatomie County Contracts Written Analysis

Summary Statistics for Contracts Written		2026	June 2025	Change	2026	Year-to-Date 2025	Change
Contracts Written		23	22	4.5%	172	148	16.2%
Volume (1,000s)		8,539	7,947	7.4%	61,409	53,915	13.9%
Average	Sale Price	371,265	361,207	2.8%	357,028	364,291	-2.0%
	Days on Market	39	28	39.3%	28	30	-6.7%
	Percent of Original	97.2%	98.7%	-1.5%	97.8%	99.0%	-1.2%
Median	Sale Price	349,900	342,450	2.2%	349,000	352,500	-1.0%
	Days on Market	10	22	-54.5%	10	13	-23.1%
	Percent of Original	100.0%	99.3%	0.7%	99.7%	99.9%	-0.2%

A total of 23 contracts for sale were written in Pottawatomie County during the month of June, up from 22 in 2025. The median list price of these homes was \$349,900, up from \$342,450 the prior year.

Half of the homes that went under contract in June were on the market less than 10 days, compared to 22 days in June 2025.

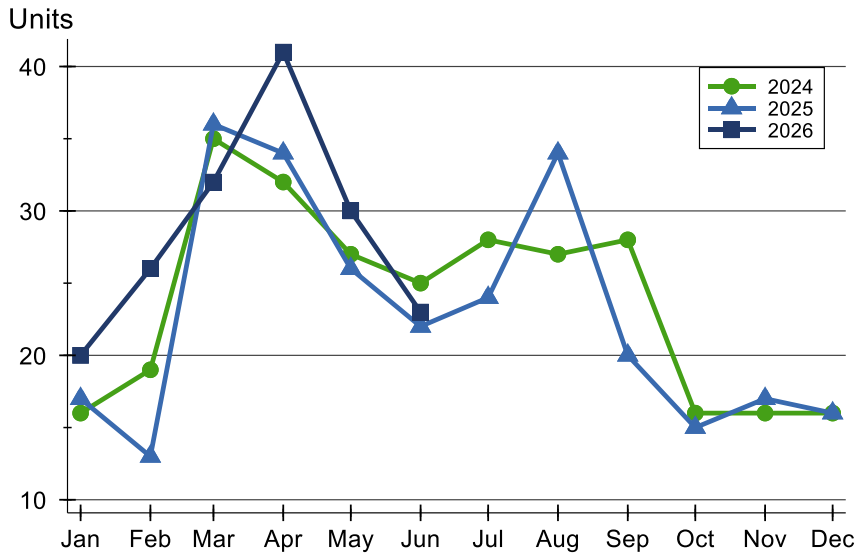
## History of Contracts Written





## Pottawatomie County Contracts Written Analysis

### Contracts Written by Month



Month	2024	2025	2026
January	16	17	20
February	19	13	26
March	35	36	32
April	32	34	41
May	27	26	30
June	25	22	23
July	28	24	
August	27	34	
September	28	20	
October	16	15	
November	16	17	
December	16	16	

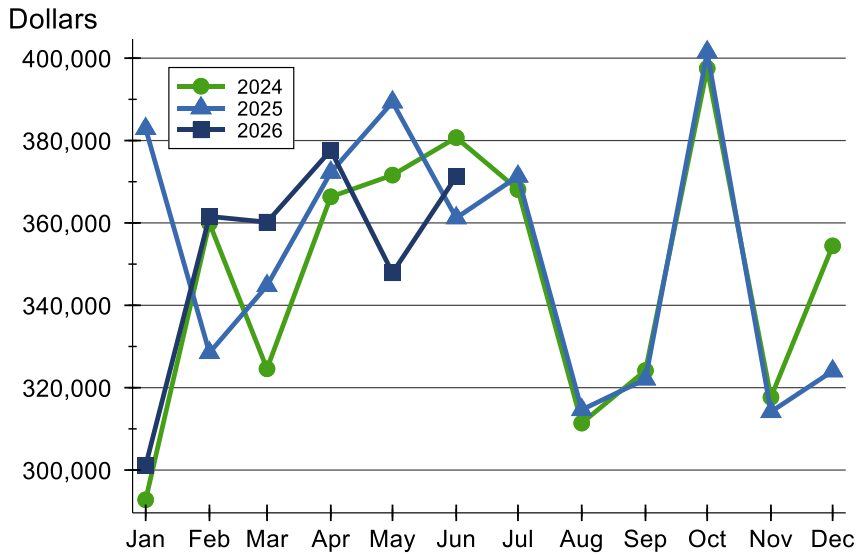
### Contracts Written by Price Range

Price Range	Contracts Written		List Price		Days on Market		Price as % of Orig.	
	Number	Percent	Average	Median	Avg.	Med.	Avg.	Med.
Below \$25,000	0	0.0%	N/A	N/A	N/A	N/A	N/A	N/A
\$25,000-\$49,999	0	0.0%	N/A	N/A	N/A	N/A	N/A	N/A
\$50,000-\$99,999	0	0.0%	N/A	N/A	N/A	N/A	N/A	N/A
\$100,000-\$124,999	0	0.0%	N/A	N/A	N/A	N/A	N/A	N/A
\$125,000-\$149,999	1	4.3%	127,500	127,500	3	3	100.0%	100.0%
\$150,000-\$174,999	0	0.0%	N/A	N/A	N/A	N/A	N/A	N/A
\$175,000-\$199,999	1	4.3%	195,000	195,000	85	85	90.7%	90.7%
\$200,000-\$249,999	4	17.4%	233,250	237,500	29	21	94.0%	97.8%
\$250,000-\$299,999	1	4.3%	284,900	284,900	49	49	98.3%	98.3%
\$300,000-\$399,999	10	43.5%	365,380	359,900	33	11	98.8%	99.8%
\$400,000-\$499,999	4	17.4%	461,250	467,500	79	64	95.9%	100.0%
\$500,000-\$749,999	1	4.3%	549,900	549,900	1	1	100.0%	100.0%
\$750,000-\$999,999	1	4.3%	950,000	950,000	6	6	100.0%	100.0%
\$1,000,000 and up	0	0.0%	N/A	N/A	N/A	N/A	N/A	N/A



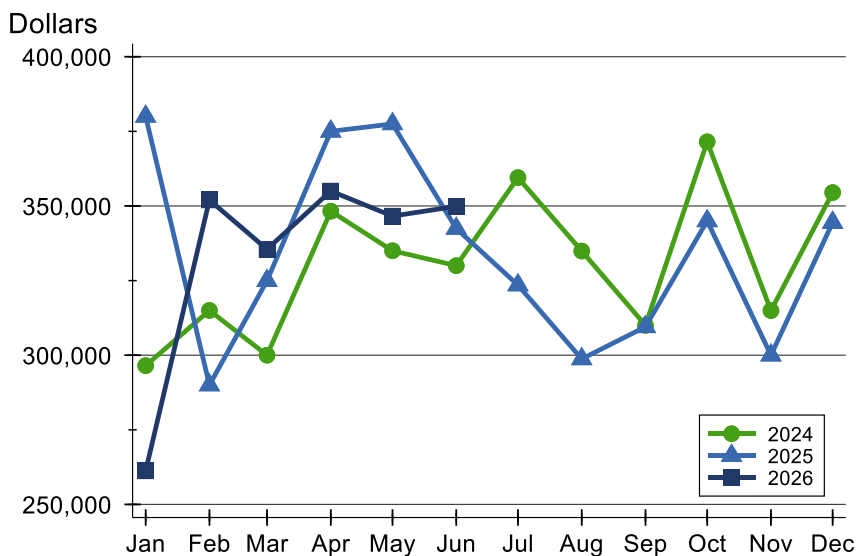
## Pottawatomie County Contracts Written Analysis

### Average Price



Month	2024	2025	2026
January	292,788	382,859	<b>301,120</b>
February	359,942	328,477	<b>361,581</b>
March	324,583	344,743	<b>360,191</b>
April	366,341	372,249	<b>377,644</b>
May	371,615	389,329	<b>347,890</b>
June	380,712	361,207	<b>371,265</b>
July	368,096	371,308	
August	311,400	314,629	
September	324,163	322,063	
October	397,509	401,483	
November	317,669	314,147	
December	354,426	324,044	

### Median Price

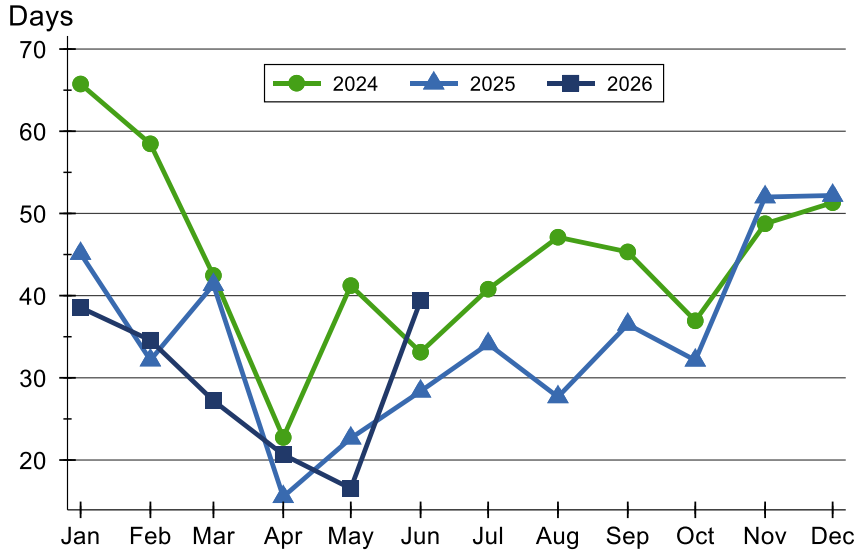


Month	2024	2025	2026
January	296,500	380,000	<b>261,250</b>
February	315,000	290,000	<b>352,000</b>
March	300,000	324,950	<b>335,500</b>
April	348,250	375,000	<b>355,000</b>
May	335,000	377,500	<b>346,600</b>
June	330,000	342,450	<b>349,900</b>
July	359,500	323,500	
August	334,900	298,750	
September	310,000	309,500	
October	371,500	345,000	
November	314,950	300,000	
December	354,500	344,450	



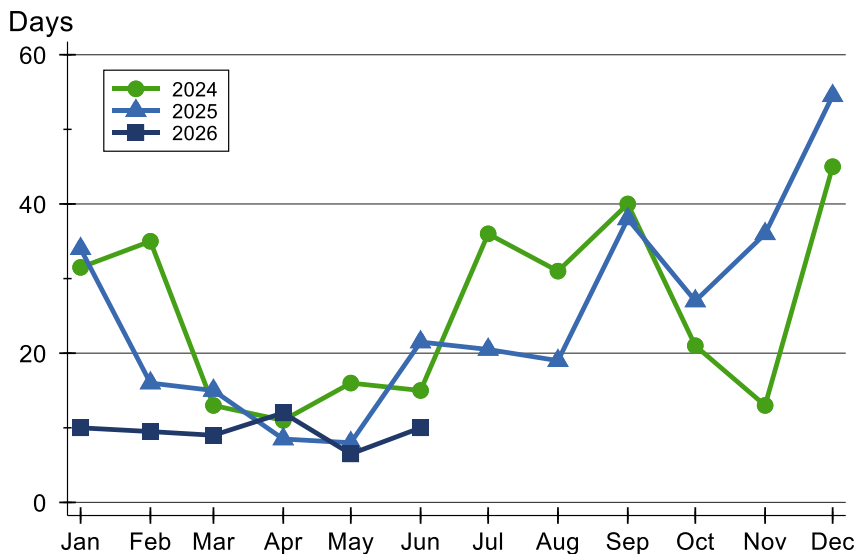
# Pottawatomie County Contracts Written Analysis

## Average DOM



Month	2024	2025	2026
January	66	45	39
February	58	32	35
March	42	41	27
April	23	16	21
May	41	23	17
June	33	28	39
July	41	34	
August	47	28	
September	45	37	
October	37	32	
November	49	52	
December	51	52	

## Median DOM



Month	2024	2025	2026
January	32	34	10
February	35	16	10
March	13	15	9
April	11	9	12
May	16	8	7
June	15	22	10
July	36	21	
August	31	19	
September	40	38	
October	21	27	
November	13	36	
December	45	55	



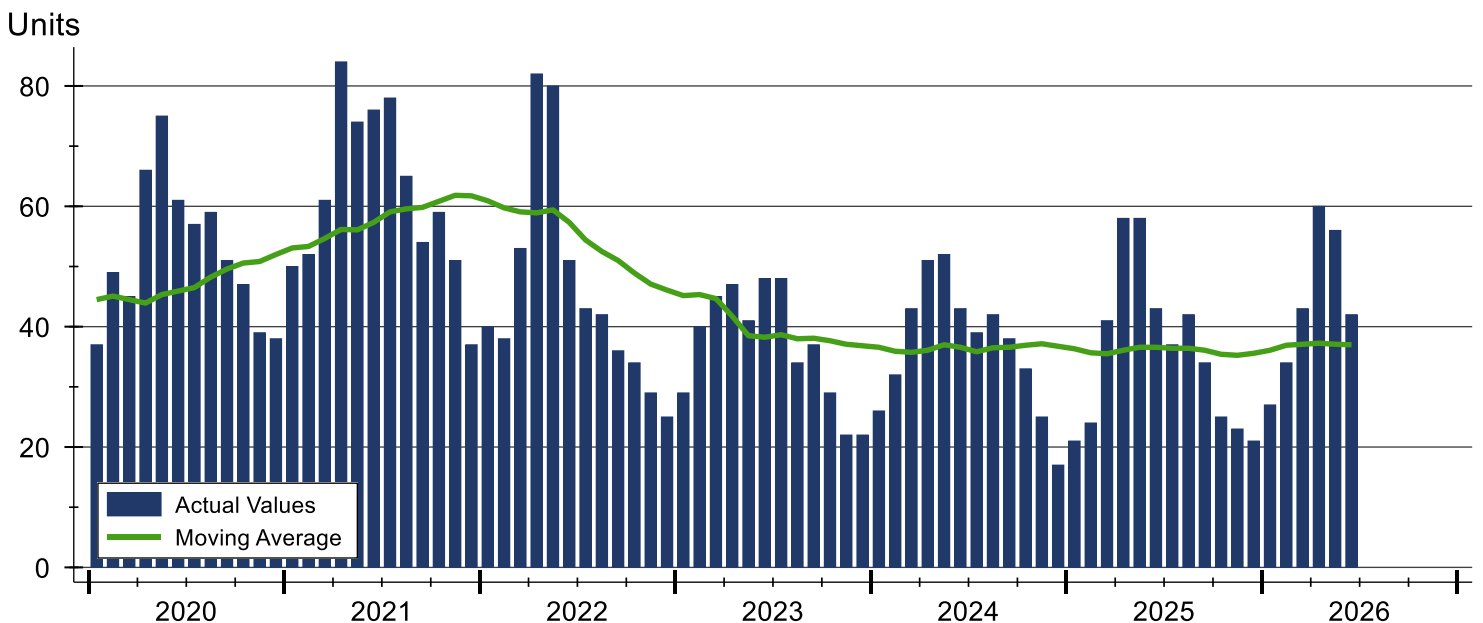
# Pottawatomie County Pending Contracts Analysis

Summary Statistics for Pending Contracts		2026	End of June 2025	Change
Pending Contracts		42	43	-2.3%
Volume (1,000s)		16,107	16,030	0.5%
Average	List Price	383,507	372,798	2.9%
	Days on Market	32	25	28.0%
	Percent of Original	98.2%	99.5%	-1.3%
Median	List Price	357,450	370,000	-3.4%
	Days on Market	10	8	25.0%
	Percent of Original	100.0%	100.0%	0.0%

A total of 42 listings in Pottawatomie County had contracts pending at the end of June, down from 43 contracts pending at the end of June 2025.

Pending contracts reflect listings with a contract in place at the end of the month. In contrast, contracts written measures the number of listings put under contract during the month.

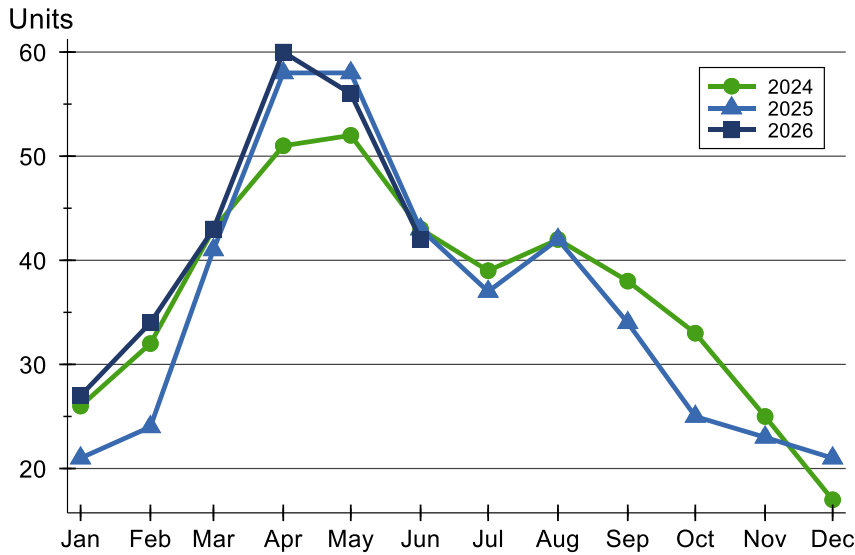
## History of Pending Contracts





## Pottawatomie County Pending Contracts Analysis

### Pending Contracts by Month



Month	2024	2025	2026
<b>January</b>	26	21	<b>27</b>
<b>February</b>	32	24	<b>34</b>
<b>March</b>	43	41	<b>43</b>
<b>April</b>	51	58	<b>60</b>
<b>May</b>	52	58	<b>56</b>
<b>June</b>	43	43	<b>42</b>
<b>July</b>	39	37	
<b>August</b>	42	42	
<b>September</b>	38	34	
<b>October</b>	33	25	
<b>November</b>	25	23	
<b>December</b>	17	21	

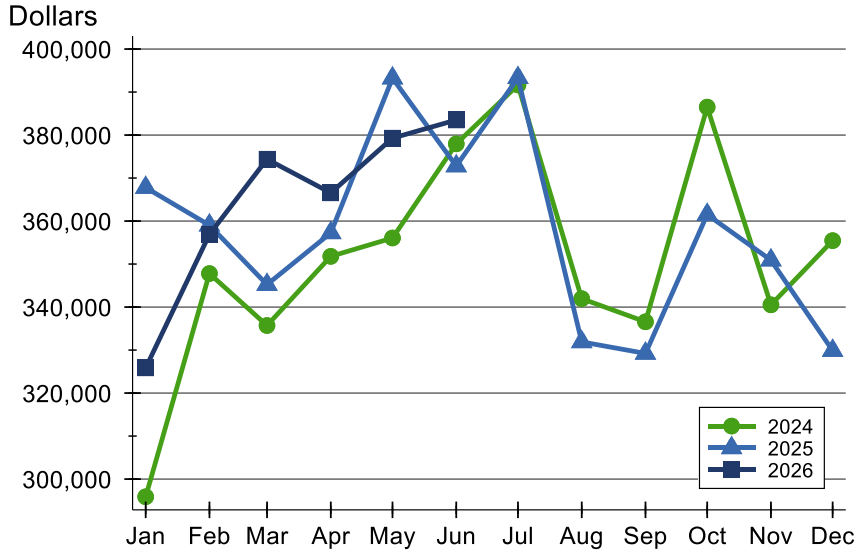
### Pending Contracts by Price Range

Price Range	Pending Contracts		List Price		Days on Market		Price as % of Orig.	
	Number	Percent	Average	Median	Avg.	Med.	Avg.	Med.
Below \$25,000	0	0.0%	N/A	N/A	N/A	N/A	N/A	N/A
\$25,000-\$49,999	0	0.0%	N/A	N/A	N/A	N/A	N/A	N/A
\$50,000-\$99,999	0	0.0%	N/A	N/A	N/A	N/A	N/A	N/A
\$100,000-\$124,999	0	0.0%	N/A	N/A	N/A	N/A	N/A	N/A
\$125,000-\$149,999	1	2.4%	127,500	127,500	3	3	100.0%	100.0%
\$150,000-\$174,999	0	0.0%	N/A	N/A	N/A	N/A	N/A	N/A
\$175,000-\$199,999	1	2.4%	195,000	195,000	85	85	90.7%	90.7%
\$200,000-\$249,999	6	14.3%	228,000	230,000	26	21	95.6%	98.8%
\$250,000-\$299,999	4	9.5%	274,975	277,450	50	38	97.9%	98.2%
\$300,000-\$399,999	16	38.1%	359,288	349,900	28	6	99.3%	100.0%
\$400,000-\$499,999	10	23.8%	447,390	444,450	46	17	97.8%	100.0%
\$500,000-\$749,999	1	2.4%	549,900	549,900	1	1	100.0%	100.0%
\$750,000-\$999,999	3	7.1%	848,167	799,500	3	2	100.0%	100.0%
\$1,000,000 and up	0	0.0%	N/A	N/A	N/A	N/A	N/A	N/A



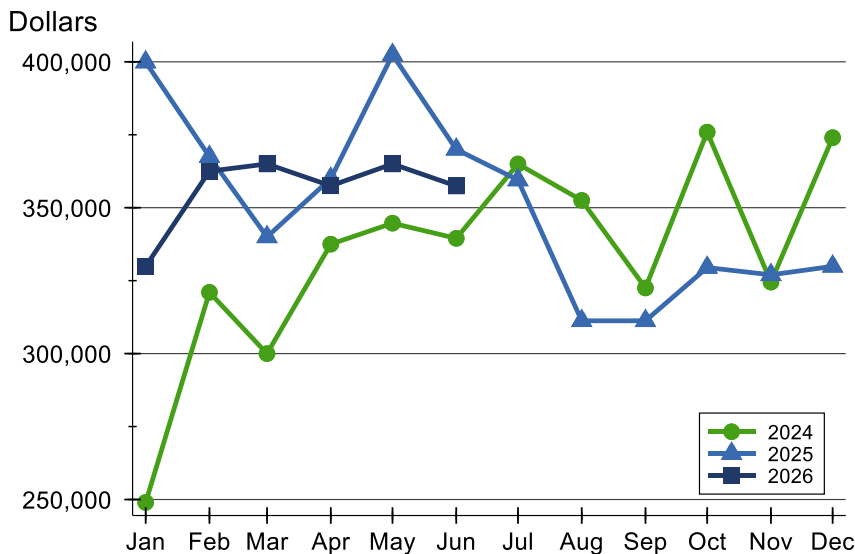
## Pottawatomie County Pending Contracts Analysis

### Average Price



Month	2024	2025	2026
January	295,888	367,788	<b>325,856</b>
February	347,797	359,038	<b>356,903</b>
March	335,716	345,226	<b>374,391</b>
April	351,796	357,247	<b>366,553</b>
May	356,067	393,239	<b>379,286</b>
June	377,952	372,798	<b>383,507</b>
July	391,650	393,323	
August	341,955	331,900	
September	336,580	329,225	
October	386,509	361,510	
November	340,524	350,909	
December	355,451	329,876	

### Median Price

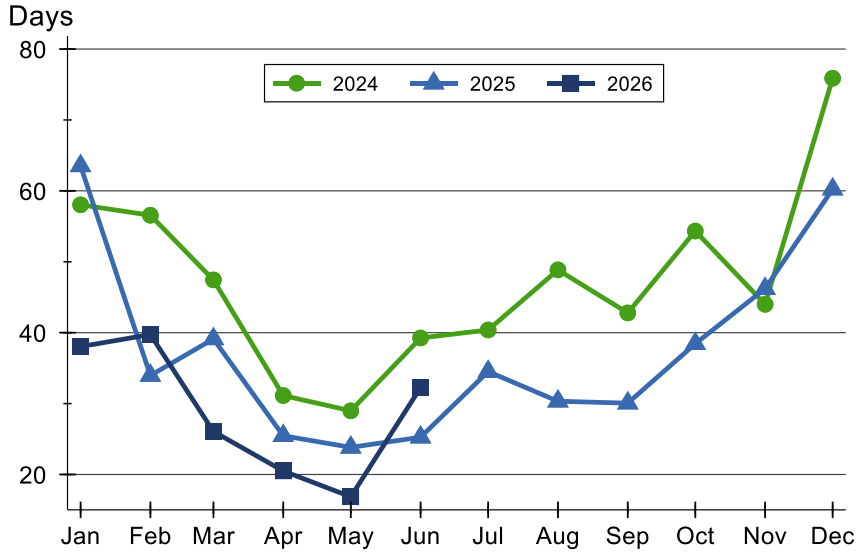


Month	2024	2025	2026
January	249,000	399,900	<b>329,900</b>
February	321,000	367,500	<b>362,500</b>
March	300,000	340,000	<b>365,000</b>
April	337,500	360,000	<b>357,500</b>
May	344,700	402,425	<b>365,000</b>
June	339,500	370,000	<b>357,450</b>
July	365,000	359,500	
August	352,500	311,250	
September	322,500	311,250	
October	375,900	329,500	
November	324,500	327,000	
December	374,000	329,900	



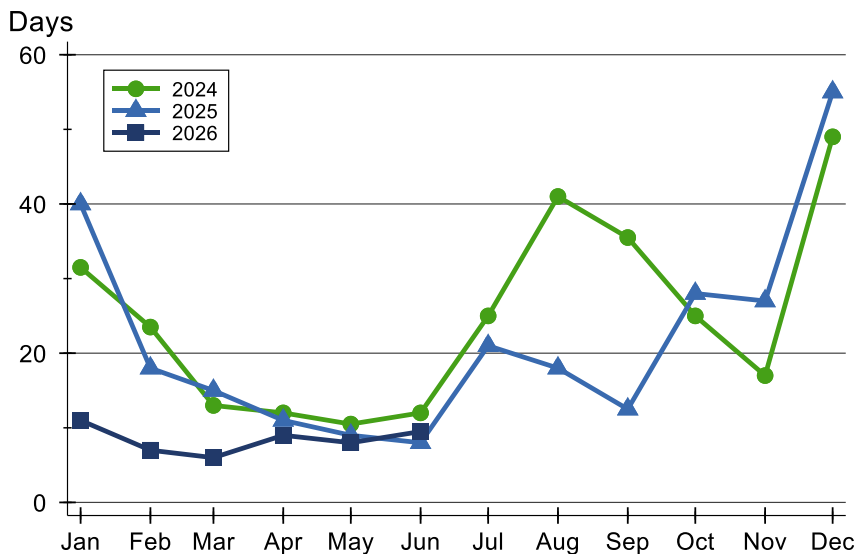
## Pottawatomie County Pending Contracts Analysis

### Average DOM



Month	2024	2025	2026
January	58	64	<b>38</b>
February	57	34	<b>40</b>
March	47	39	<b>26</b>
April	31	25	<b>21</b>
May	29	24	<b>17</b>
June	39	25	<b>32</b>
July	40	35	
August	49	30	
September	43	30	
October	54	38	
November	44	46	
December	76	60	

### Median DOM



Month	2024	2025	2026
January	32	40	<b>11</b>
February	24	18	<b>7</b>
March	13	15	<b>6</b>
April	12	11	<b>9</b>
May	11	9	<b>8</b>
June	12	8	<b>10</b>
July	25	21	
August	41	18	
September	36	13	
October	25	28	
November	17	27	
December	49	55	