



Riley County Housing Report



Market Overview

Riley County Home Sales Rose in February

Total home sales in Riley County rose by 75.9% last month to 51 units, compared to 29 units in February 2023. Total sales volume was \$13.5 million, up 76.7% from a year earlier.

The median sale price in February was \$260,000, up from \$229,900 a year earlier. Homes that sold in February were typically on the market for 33 days and sold for 97.4% of their list prices.

Riley County Active Listings Up at End of February

The total number of active listings in Riley County at the end of February was 128 units, up from 115 at the same point in 2023. This represents a 1.8 months' supply of homes available for sale. The median list price of homes on the market at the end of February was \$255,750.

During February, a total of 76 contracts were written up from 54 in February 2023. At the end of the month, there were 113 contracts still pending.

Report Contents

- Summary Statistics – Page 2
- Closed Listing Analysis – Page 3
- Active Listings Analysis – Page 7
- Months' Supply Analysis – Page 11
- New Listings Analysis – Page 12
- Contracts Written Analysis – Page 15
- Pending Contracts Analysis – Page 19

Contact Information

Margaret Pendleton, Association Executive
 Flint Hills Association of REALTORS®
 205 S. Seth Child Road
 Manhattan, KS 66502
 785-776-1203
ae@flinthillsrealtors.net
www.flinthillsrealtors.net



**February
2024**

Flint Hills MLS Statistics



**FLINT HILLS
ASSOCIATION
OF REALTORS®**

Riley County Summary Statistics

February MLS Statistics Three-year History		Current Month			Year-to-Date		
		2024	2023	2022	2024	2023	2022
Home Sales Change from prior year		51 75.9%	29 -49.1%	57 -12.3%	99 67.8%	59 -50.0%	118 1.7%
Active Listings Change from prior year		128 11.3%	115 10.6%	104 -30.7%	N/A	N/A	N/A
Months' Supply Change from prior year		1.8 20.0%	1.5 36.4%	1.1 -42.1%	N/A	N/A	N/A
New Listings Change from prior year		88 27.5%	69 -33.7%	104 40.5%	144 22.0%	118 -35.2%	182 10.3%
Contracts Written Change from prior year		76 40.7%	54 -45.5%	99 26.9%	133 31.7%	101 -42.9%	177 3.5%
Pending Contracts Change from prior year		113 9.7%	103 -36.4%	162 7.3%	N/A	N/A	N/A
Sales Volume (1,000s) Change from prior year		13,535 76.7%	7,660 -42.7%	13,379 -10.4%	25,771 79.4%	14,362 -47.1%	27,158 6.7%
Average	Sale Price Change from prior year	265,385 0.5%	264,153 12.5%	234,723 2.2%	260,312 6.9%	243,430 5.8%	230,149 4.9%
	List Price of Actives Change from prior year	301,514 -10.7%	337,680 7.2%	315,098 17.0%	N/A	N/A	N/A
	Days on Market Change from prior year	51 27.5%	40 42.9%	28 -48.1%	50 25.0%	40 0.0%	40 -23.1%
	Percent of List Change from prior year	96.9% -1.9%	98.8% 0.0%	98.8% 1.6%	96.8% -1.1%	97.9% -0.6%	98.5% 1.3%
	Percent of Original Change from prior year	95.8% -1.9%	97.7% 0.3%	97.4% 1.9%	95.2% -1.2%	96.4% 0.2%	96.2% 0.5%
Median	Sale Price Change from prior year	260,000 13.1%	229,900 10.8%	207,500 1.2%	249,500 17.4%	212,500 6.3%	200,000 0.8%
	List Price of Actives Change from prior year	255,750 -9.6%	282,900 6.0%	267,000 27.1%	N/A	N/A	N/A
	Days on Market Change from prior year	33 22.2%	27 170.0%	10 -65.5%	26 -3.7%	27 68.8%	16 -44.8%
	Percent of List Change from prior year	97.4% -2.3%	99.7% -0.3%	100.0% 1.5%	97.7% -1.1%	98.8% -1.2%	100.0% 1.5%
	Percent of Original Change from prior year	96.9% -1.5%	98.4% -1.6%	100.0% 3.3%	96.9% -0.3%	97.2% -2.0%	99.2% 1.3%

Note: Year-to-date statistics cannot be calculated for Active Listings, Months' Supply and Pending Contracts.



Riley County Closed Listings Analysis

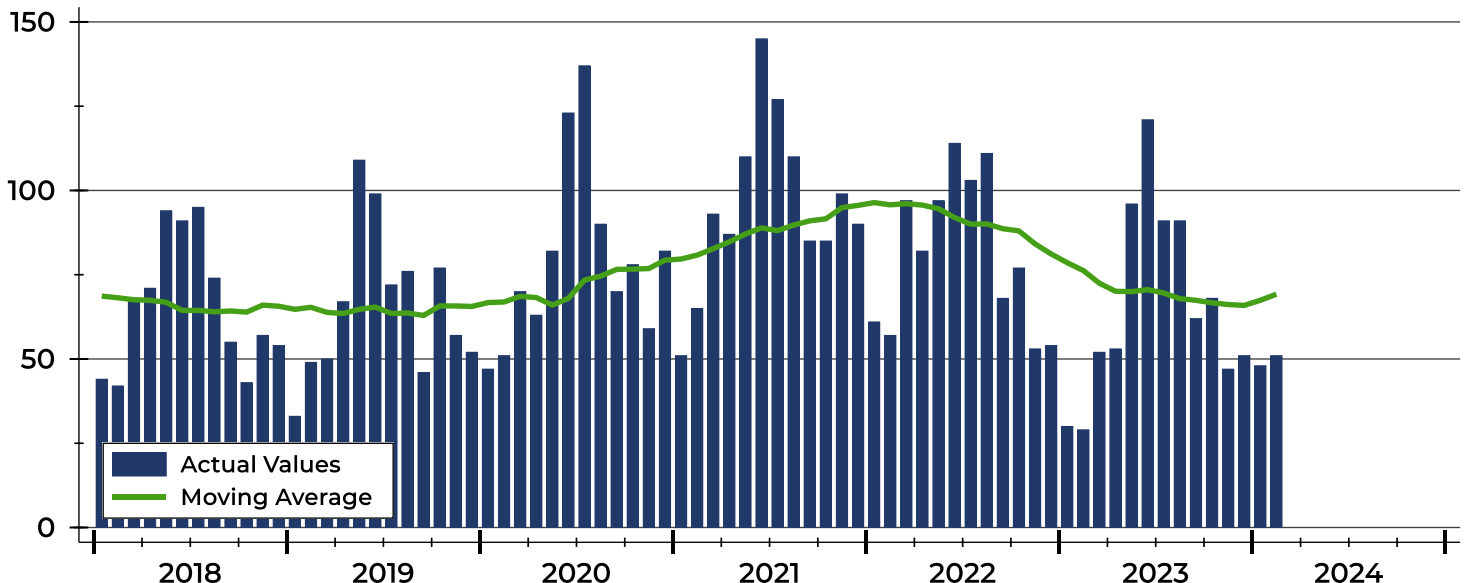
Summary Statistics for Closed Listings		2024	February 2023	Change	2024	Year-to-Date 2023	Change
Closed Listings		51	29	75.9%	99	59	67.8%
Volume (1,000s)		13,535	7,660	76.7%	25,771	14,362	79.4%
Months' Supply		1.8	1.5	20.0%	N/A	N/A	N/A
Average	Sale Price	265,385	264,153	0.5%	260,312	243,430	6.9%
	Days on Market	51	40	27.5%	50	40	25.0%
	Percent of List	96.9%	98.8%	-1.9%	96.8%	97.9%	-1.1%
	Percent of Original	95.8%	97.7%	-1.9%	95.2%	96.4%	-1.2%
Median	Sale Price	260,000	229,900	13.1%	249,500	212,500	17.4%
	Days on Market	33	27	22.2%	26	27	-3.7%
	Percent of List	97.4%	99.7%	-2.3%	97.7%	98.8%	-1.1%
	Percent of Original	96.9%	98.4%	-1.5%	96.9%	97.2%	-0.3%

A total of 51 homes sold in Riley County in February, up from 29 units in February 2023. Total sales volume rose to \$13.5 million compared to \$7.7 million in the previous year.

The median sales price in February was \$260,000, up 13.1% compared to the prior year. Median days on market was 33 days, up from 19 days in January, and up from 27 in February 2023.

History of Closed Listings

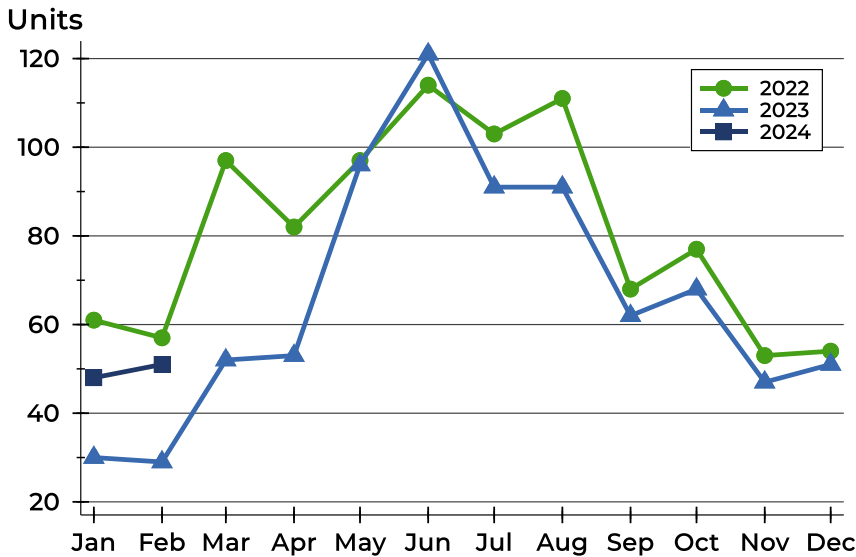
Units





Riley County Closed Listings Analysis

Closed Listings by Month



Month	2022	2023	2024
January	61	30	48
February	57	29	51
March	97	52	
April	82	53	
May	97	96	
June	114	121	
July	103	91	
August	111	91	
September	68	62	
October	77	68	
November	53	47	
December	54	51	

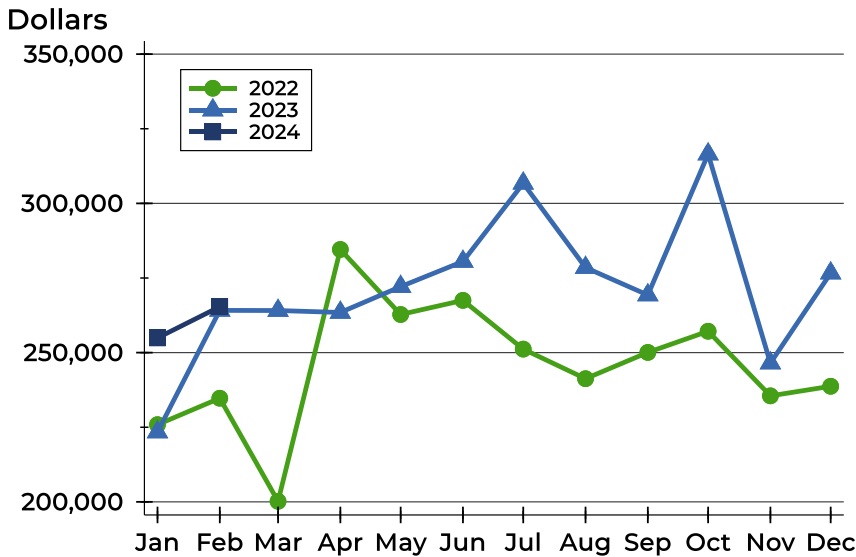
Closed Listings by Price Range

Price Range	Sales		Months' Supply	Sale Price		Days on Market		Price as % of List		Price as % of Orig.	
	Number	Percent		Average	Median	Avg.	Med.	Avg.	Med.	Avg.	Med.
Below \$25,000	0	0.0%	N/A	N/A	N/A	N/A	N/A	N/A	N/A	N/A	N/A
\$25,000-\$49,999	0	0.0%	N/A	N/A	N/A	N/A	N/A	N/A	N/A	N/A	N/A
\$50,000-\$99,999	1	2.0%	13.3	87,000	87,000	124	124	87.1%	87.1%	82.9%	82.9%
\$100,000-\$124,999	3	5.9%	4.1	116,333	115,000	100	26	95.8%	96.0%	95.8%	96.0%
\$125,000-\$149,999	1	2.0%	1.4	135,000	135,000	76	76	87.1%	87.1%	84.4%	84.4%
\$150,000-\$174,999	5	9.8%	1.7	163,700	165,000	19	12	97.6%	98.2%	95.9%	98.2%
\$175,000-\$199,999	6	11.8%	1.9	183,583	181,750	44	32	96.3%	96.5%	95.7%	96.5%
\$200,000-\$249,999	8	15.7%	0.9	223,863	222,250	31	7	97.4%	98.3%	96.7%	97.3%
\$250,000-\$299,999	9	17.6%	1.8	274,722	270,000	38	33	97.6%	98.2%	96.7%	96.2%
\$300,000-\$399,999	12	23.5%	1.6	335,179	334,950	44	44	97.6%	97.8%	96.2%	97.6%
\$400,000-\$499,999	5	9.8%	1.7	448,620	440,000	94	116	97.5%	97.7%	96.2%	96.3%
\$500,000-\$749,999	1	2.0%	2.7	515,000	515,000	135	135	97.2%	97.2%	97.2%	97.2%
\$750,000-\$999,999	0	0.0%	N/A	N/A	N/A	N/A	N/A	N/A	N/A	N/A	N/A
\$1,000,000 and up	0	0.0%	N/A	N/A	N/A	N/A	N/A	N/A	N/A	N/A	N/A



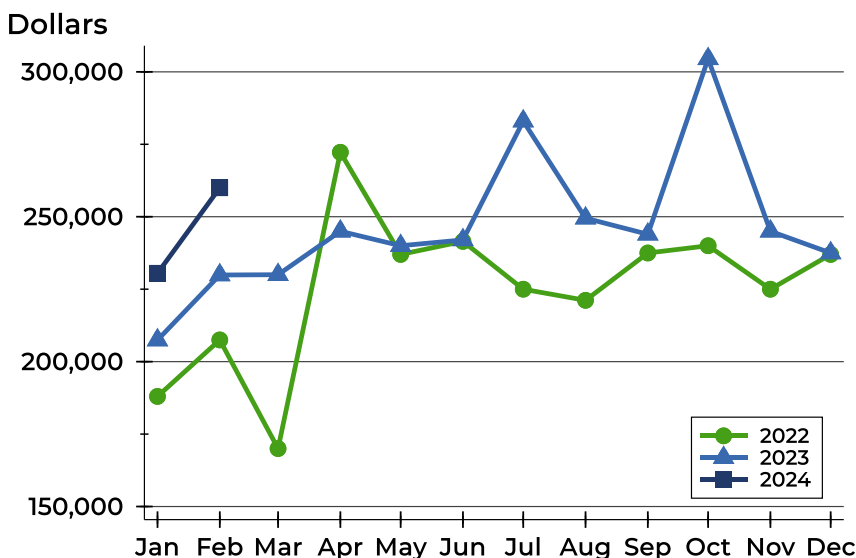
Riley County Closed Listings Analysis

Average Price



Month	2022	2023	2024
January	225,875	223,398	254,923
February	234,723	264,153	265,385
March	200,196	264,104	
April	284,561	263,458	
May	262,771	272,119	
June	267,511	280,542	
July	251,180	306,725	
August	241,275	278,493	
September	250,074	269,304	
October	257,164	316,505	
November	235,522	246,497	
December	238,726	276,629	

Median Price

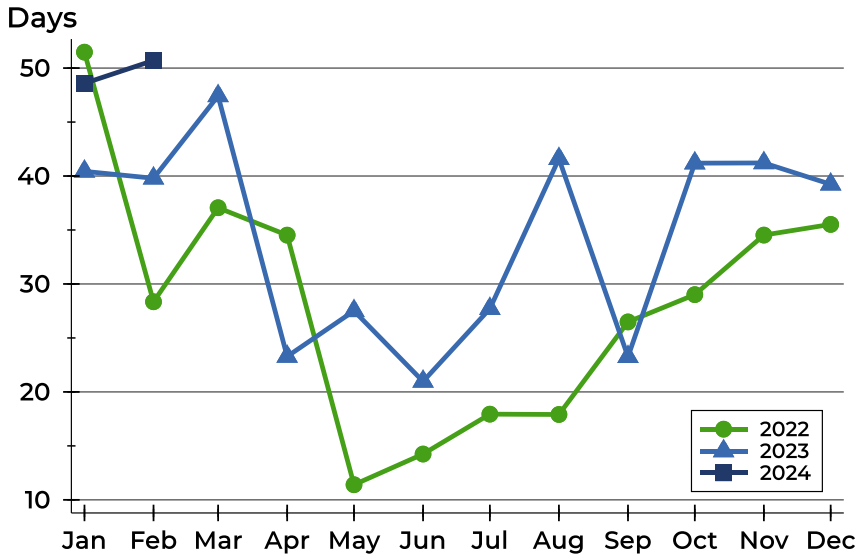


Month	2022	2023	2024
January	188,000	207,450	230,500
February	207,500	229,900	260,000
March	170,000	230,000	
April	272,250	245,000	
May	237,000	240,000	
June	241,500	242,000	
July	225,000	283,000	
August	221,159	249,500	
September	237,500	243,950	
October	240,000	304,500	
November	225,000	245,000	
December	237,000	237,500	



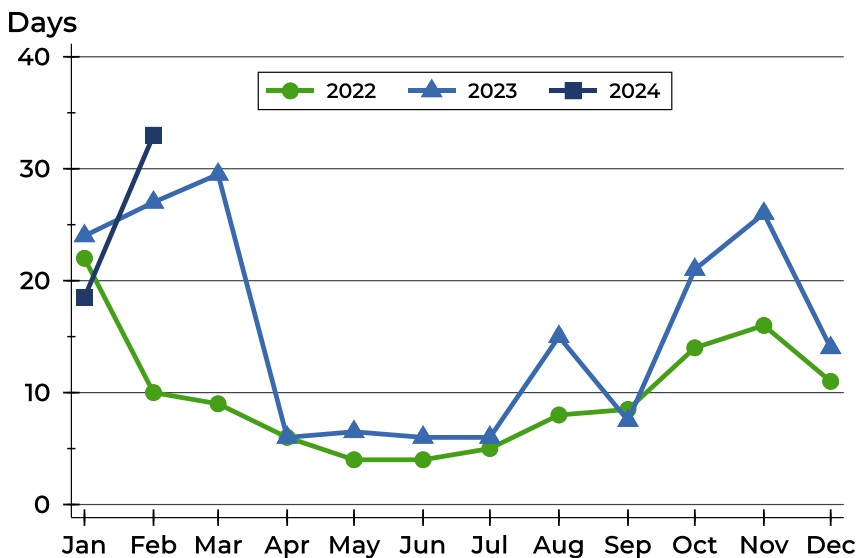
Riley County Closed Listings Analysis

Average DOM



Month	2022	2023	2024
January	51	40	49
February	28	40	51
March	37	47	
April	35	23	
May	11	28	
June	14	21	
July	18	28	
August	18	42	
September	26	23	
October	29	41	
November	35	41	
December	36	39	

Median DOM



Month	2022	2023	2024
January	22	24	19
February	10	27	33
March	9	30	
April	6	6	
May	4	7	
June	4	6	
July	5	6	
August	8	15	
September	9	8	
October	14	21	
November	16	26	
December	11	14	



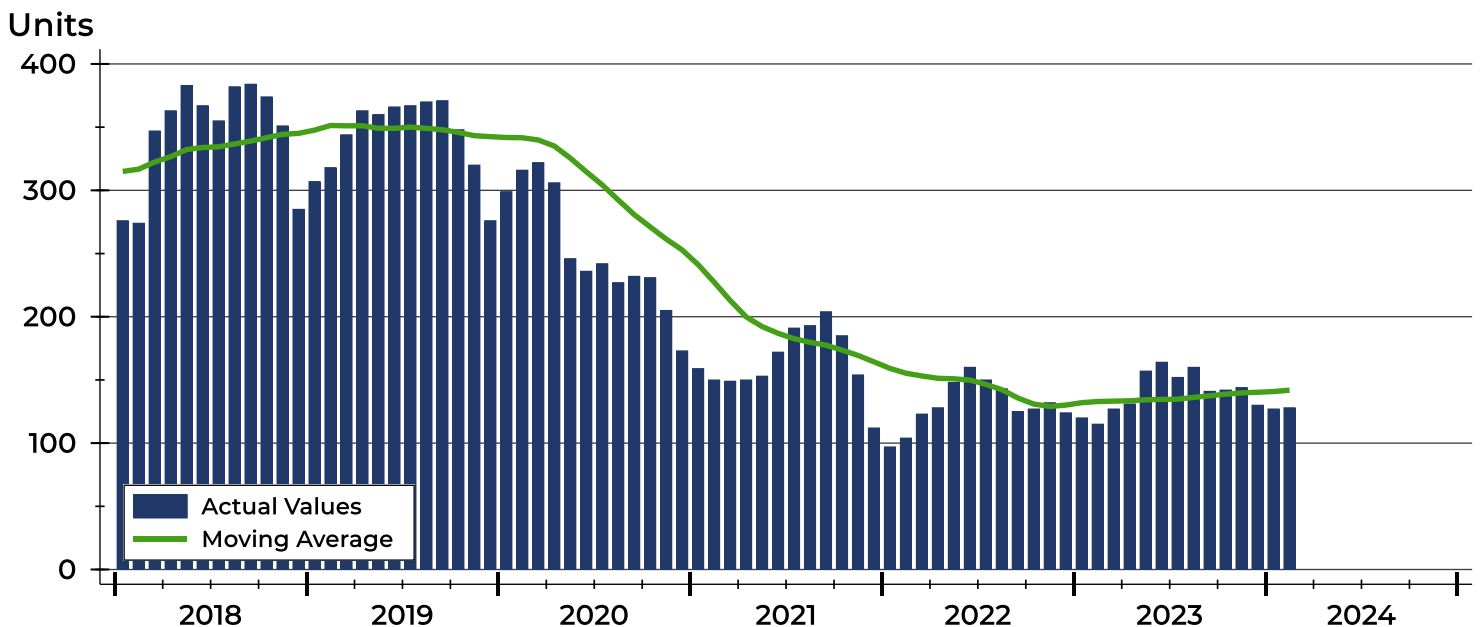
Riley County Active Listings Analysis

Summary Statistics for Active Listings		2024	End of February 2023	Change
Active Listings		128	115	11.3%
Volume (1,000s)		38,594	38,833	-0.6%
Months' Supply		1.8	1.5	20.0%
Average	List Price	301,514	337,680	-10.7%
	Days on Market	82	85	-3.5%
	Percent of Original	97.7%	98.1%	-0.4%
Median	List Price	255,750	282,900	-9.6%
	Days on Market	58	59	-1.7%
	Percent of Original	100.0%	100.0%	0.0%

A total of 128 homes were available for sale in Riley County at the end of February. This represents a 1.8 months' supply of active listings.

The median list price of homes on the market at the end of February was \$255,750, down 9.6% from 2023. The typical time on market for active listings was 58 days, down from 59 days a year earlier.

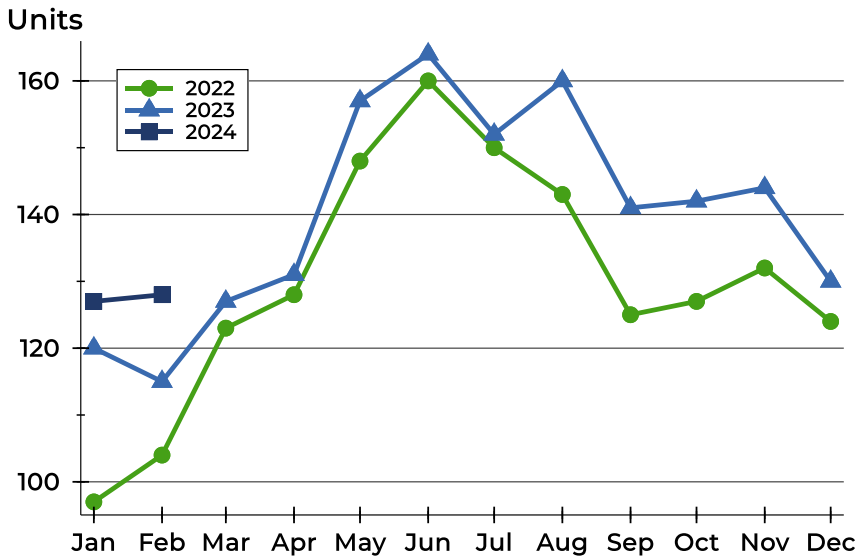
History of Active Listings





Riley County Active Listings Analysis

Active Listings by Month



Month	2022	2023	2024
January	97	120	127
February	104	115	128
March	123	127	
April	128	131	
May	148	157	
June	160	164	
July	150	152	
August	143	160	
September	125	141	
October	127	142	
November	132	144	
December	124	130	

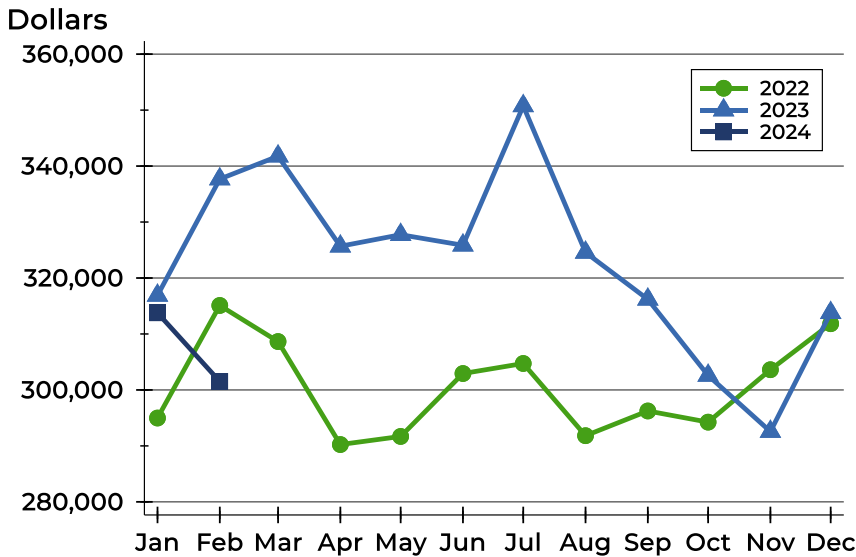
Active Listings by Price Range

Price Range	Active Listings Number	Active Listings Percent	Months' Supply	List Price Average	List Price Median	Days on Market Avg.	Days on Market Med.	Price as % of Orig. Avg.	Price as % of Orig. Med.
Below \$25,000	0	0.0%	N/A	N/A	N/A	N/A	N/A	N/A	N/A
\$25,000-\$49,999	0	0.0%	N/A	N/A	N/A	N/A	N/A	N/A	N/A
\$50,000-\$99,999	10	7.8%	13.3	83,260	84,950	100	70	94.9%	100.0%
\$100,000-\$124,999	11	8.6%	4.1	113,891	115,000	94	55	96.9%	100.0%
\$125,000-\$149,999	5	3.9%	1.4	137,800	135,000	71	61	98.3%	100.0%
\$150,000-\$174,999	10	7.8%	1.7	166,740	169,500	55	52	99.0%	100.0%
\$175,000-\$199,999	14	10.9%	1.9	187,450	186,500	52	45	99.8%	100.0%
\$200,000-\$249,999	13	10.2%	0.9	226,185	227,000	54	25	96.5%	100.0%
\$250,000-\$299,999	18	14.1%	1.8	274,717	271,200	75	60	97.5%	100.0%
\$300,000-\$399,999	24	18.8%	1.6	354,871	364,000	67	47	98.5%	99.5%
\$400,000-\$499,999	9	7.0%	1.7	450,444	440,000	82	48	98.5%	100.0%
\$500,000-\$749,999	9	7.0%	2.7	622,222	650,000	84	85	99.7%	100.0%
\$750,000-\$999,999	3	2.3%	N/A	924,167	925,000	357	146	89.9%	89.8%
\$1,000,000 and up	2	1.6%	N/A	1,349,500	1,349,500	279	279	90.0%	90.0%



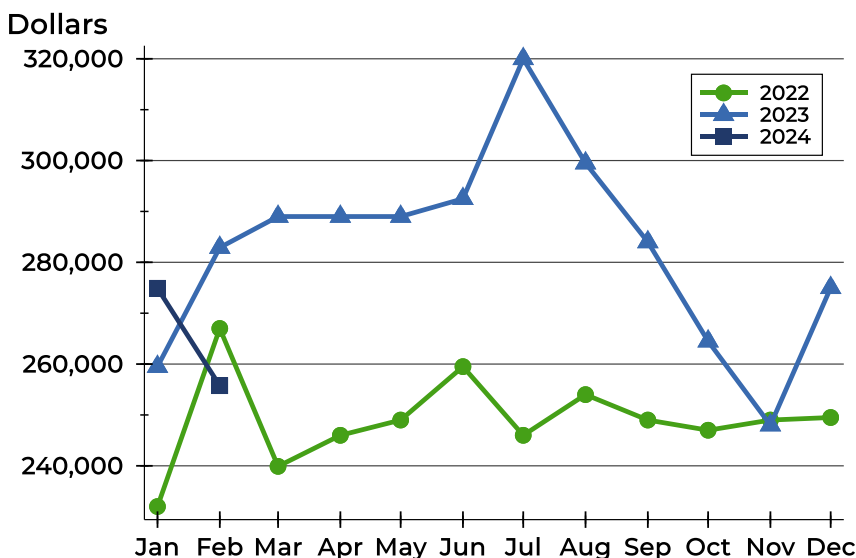
Riley County Active Listings Analysis

Average Price



Month	2022	2023	2024
January	294,980	316,889	313,781
February	315,098	337,680	301,514
March	308,649	341,768	
April	290,244	325,675	
May	291,693	327,740	
June	302,934	325,855	
July	304,729	350,757	
August	291,827	324,571	
September	296,245	316,188	
October	294,245	302,591	
November	303,615	292,564	
December	311,834	313,791	

Median Price

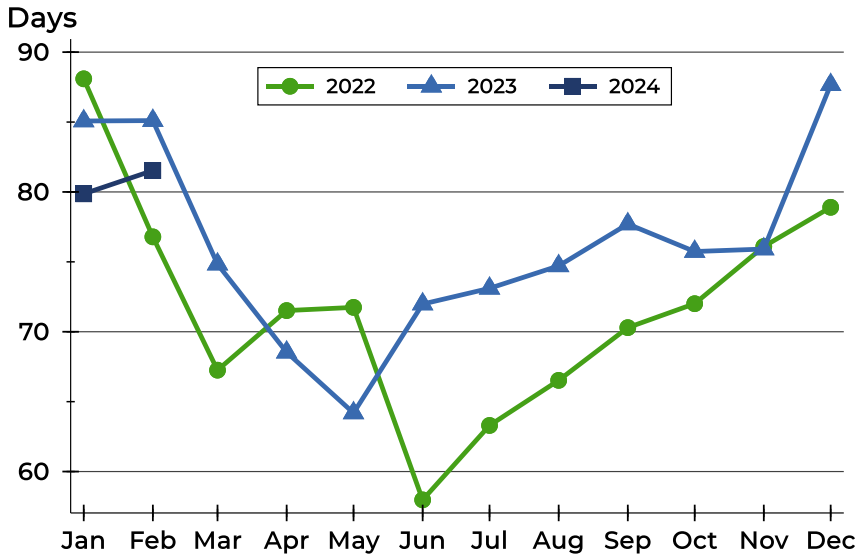


Month	2022	2023	2024
January	232,000	259,500	274,900
February	267,000	282,900	255,750
March	239,900	289,000	
April	246,000	289,000	
May	249,000	289,000	
June	259,500	292,500	
July	246,000	320,000	
August	254,000	299,500	
September	249,000	284,000	
October	247,000	264,500	
November	249,000	248,000	
December	249,500	275,000	



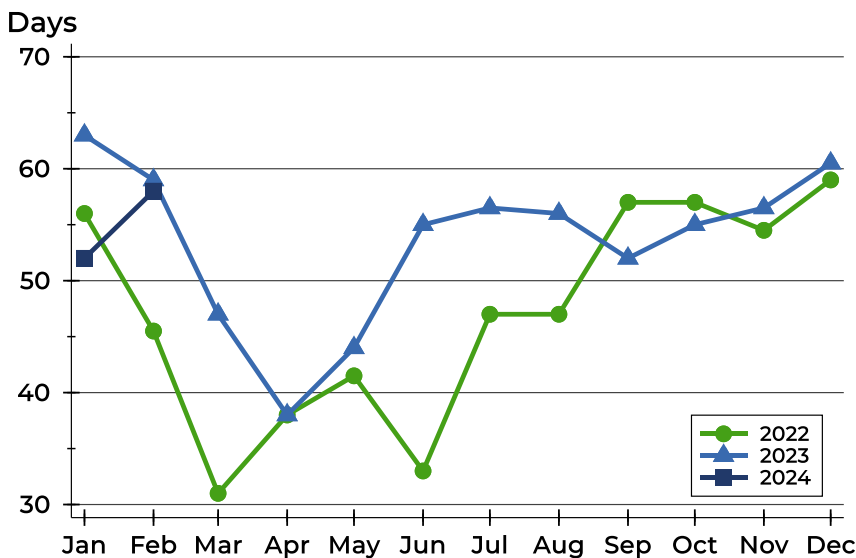
Riley County Active Listings Analysis

Average DOM



Month	2022	2023	2024
January	88	85	80
February	77	85	82
March	67	75	
April	72	69	
May	72	64	
June	58	72	
July	63	73	
August	67	75	
September	70	78	
October	72	76	
November	76	76	
December	79	88	

Median DOM

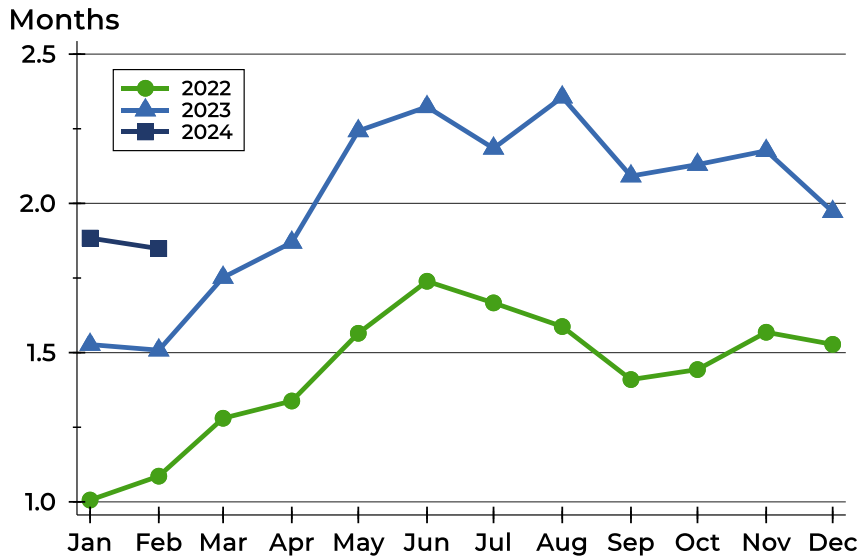


Month	2022	2023	2024
January	56	63	52
February	46	59	58
March	31	47	
April	38	38	
May	42	44	
June	33	55	
July	47	57	
August	47	56	
September	57	52	
October	57	55	
November	55	57	
December	59	61	



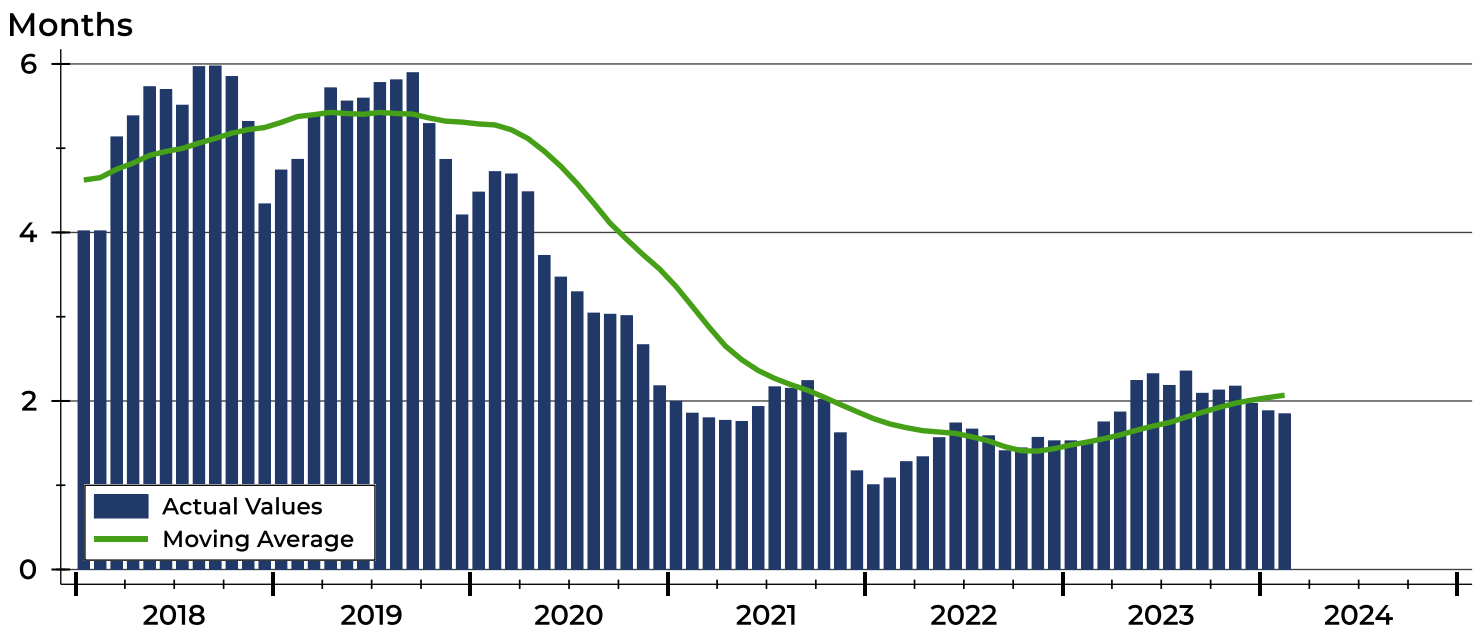
Riley County Months' Supply Analysis

Months' Supply by Month



Month	2022	2023	2024
January	1.0	1.5	1.9
February	1.1	1.5	1.8
March	1.3	1.8	
April	1.3	1.9	
May	1.6	2.2	
June	1.7	2.3	
July	1.7	2.2	
August	1.6	2.4	
September	1.4	2.1	
October	1.4	2.1	
November	1.6	2.2	
December	1.5	2.0	

History of Month's Supply





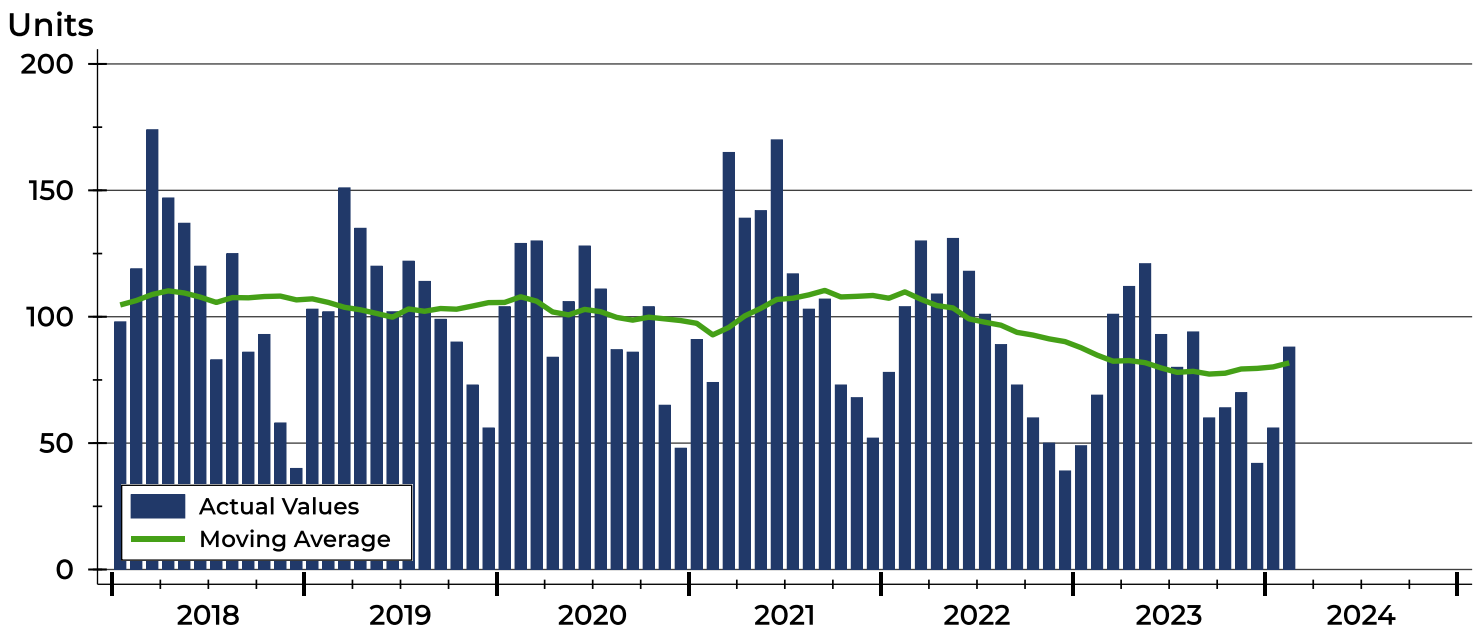
Riley County New Listings Analysis

Summary Statistics for New Listings		2024	February 2023	Change
Current Month	New Listings	88	69	27.5%
	Volume (1,000s)	24,760	20,201	22.6%
	Average List Price	281,365	292,767	-3.9%
	Median List Price	242,500	270,000	-10.2%
Year-to-Date	New Listings	144	118	22.0%
	Volume (1,000s)	39,851	34,306	16.2%
	Average List Price	276,743	290,726	-4.8%
	Median List Price	254,000	264,750	-4.1%

A total of 88 new listings were added in Riley County during February, up 27.5% from the same month in 2023. Year-to-date Riley County has seen 144 new listings.

The median list price of these homes was \$242,500 down from \$270,000 in 2023.

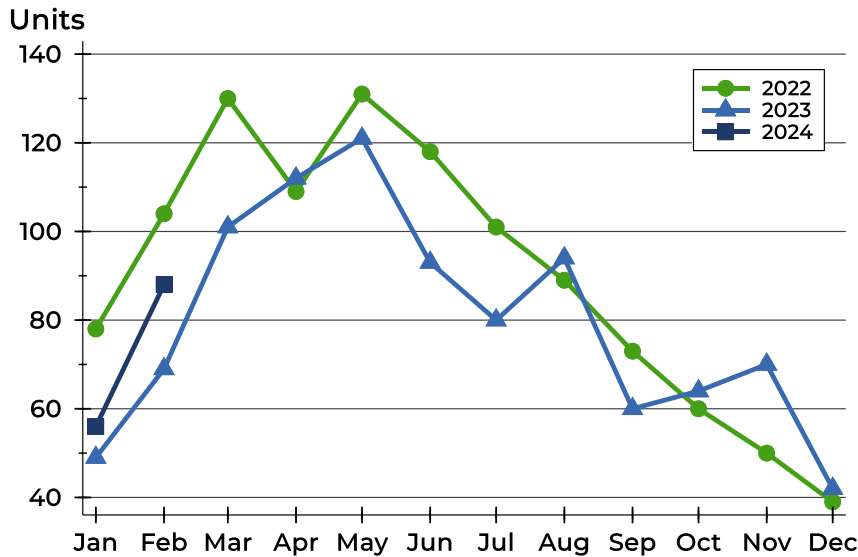
History of New Listings





Riley County New Listings Analysis

New Listings by Month



Month	2022	2023	2024
January	78	49	56
February	104	69	88
March	130	101	
April	109	112	
May	131	121	
June	118	93	
July	101	80	
August	89	94	
September	73	60	
October	60	64	
November	50	70	
December	39	42	

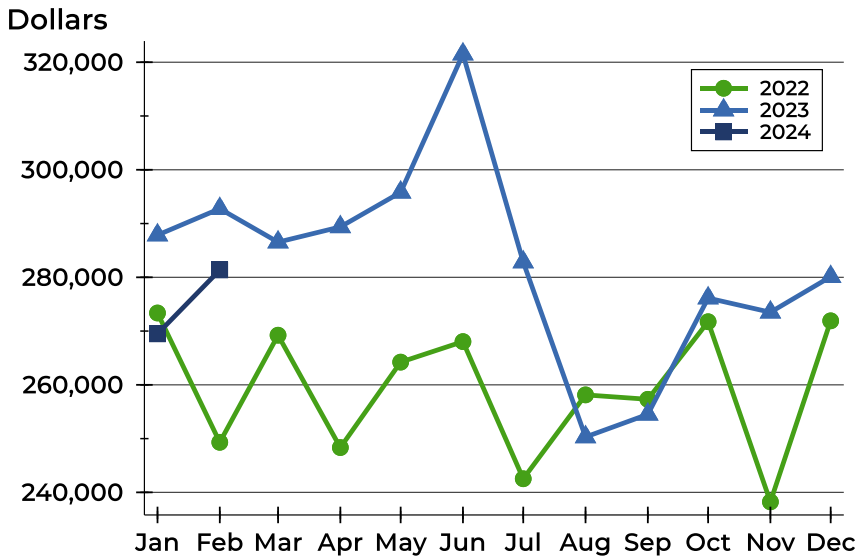
New Listings by Price Range

Price Range	New Listings		List Price		Days on Market		Price as % of Orig.	
	Number	Percent	Average	Median	Avg.	Med.	Avg.	Med.
Below \$25,000	0	0.0%	N/A	N/A	N/A	N/A	N/A	N/A
\$25,000-\$49,999	0	0.0%	N/A	N/A	N/A	N/A	N/A	N/A
\$50,000-\$99,999	4	4.5%	85,750	84,500	10	7	100.0%	100.0%
\$100,000-\$124,999	3	3.4%	115,833	117,500	19	18	99.3%	100.0%
\$125,000-\$149,999	2	2.3%	134,600	134,600	4	4	98.0%	98.0%
\$150,000-\$174,999	8	9.1%	167,850	169,000	7	4	99.9%	100.0%
\$175,000-\$199,999	11	12.5%	186,236	184,900	11	10	100.2%	100.0%
\$200,000-\$249,999	20	22.7%	225,935	225,000	11	8	100.1%	100.0%
\$250,000-\$299,999	9	10.2%	283,744	289,900	8	3	99.5%	100.0%
\$300,000-\$399,999	17	19.3%	343,806	338,000	13	11	99.8%	100.0%
\$400,000-\$499,999	8	9.1%	446,750	444,500	11	13	100.0%	100.0%
\$500,000-\$749,999	5	5.7%	583,980	559,000	12	10	100.0%	100.0%
\$750,000-\$999,999	1	1.1%	998,000	998,000	21	21	100.0%	100.0%
\$1,000,000 and up	0	0.0%	N/A	N/A	N/A	N/A	N/A	N/A



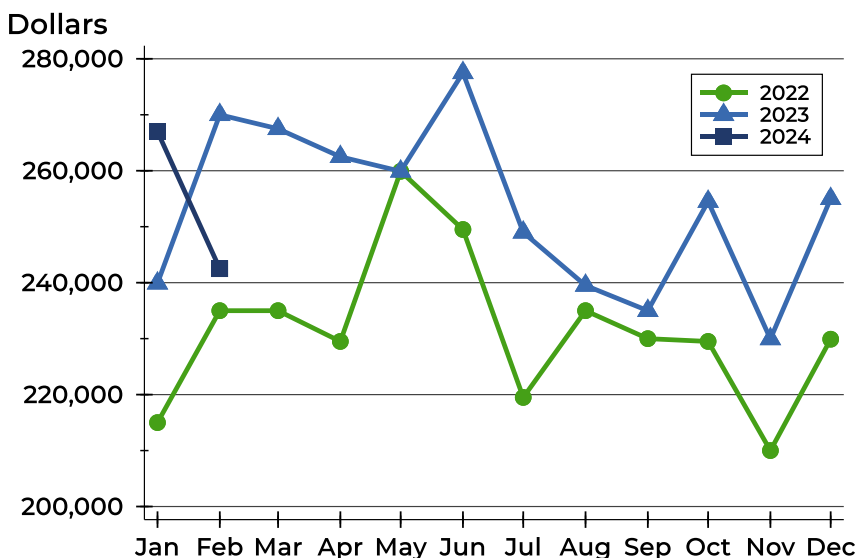
Riley County New Listings Analysis

Average Price



Month	2022	2023	2024
January	273,365	287,852	269,480
February	249,317	292,767	281,365
March	269,234	286,544	
April	248,339	289,376	
May	264,226	295,812	
June	268,046	321,506	
July	242,536	282,840	
August	258,135	250,303	
September	257,311	254,518	
October	271,739	276,135	
November	238,235	273,505	
December	271,909	280,112	

Median Price



Month	2022	2023	2024
January	215,000	239,900	267,000
February	235,000	270,000	242,500
March	235,000	267,500	
April	229,500	262,500	
May	259,900	259,900	
June	249,500	277,500	
July	219,500	249,000	
August	235,000	239,500	
September	230,000	235,000	
October	229,500	254,500	
November	210,000	229,950	
December	229,900	255,000	



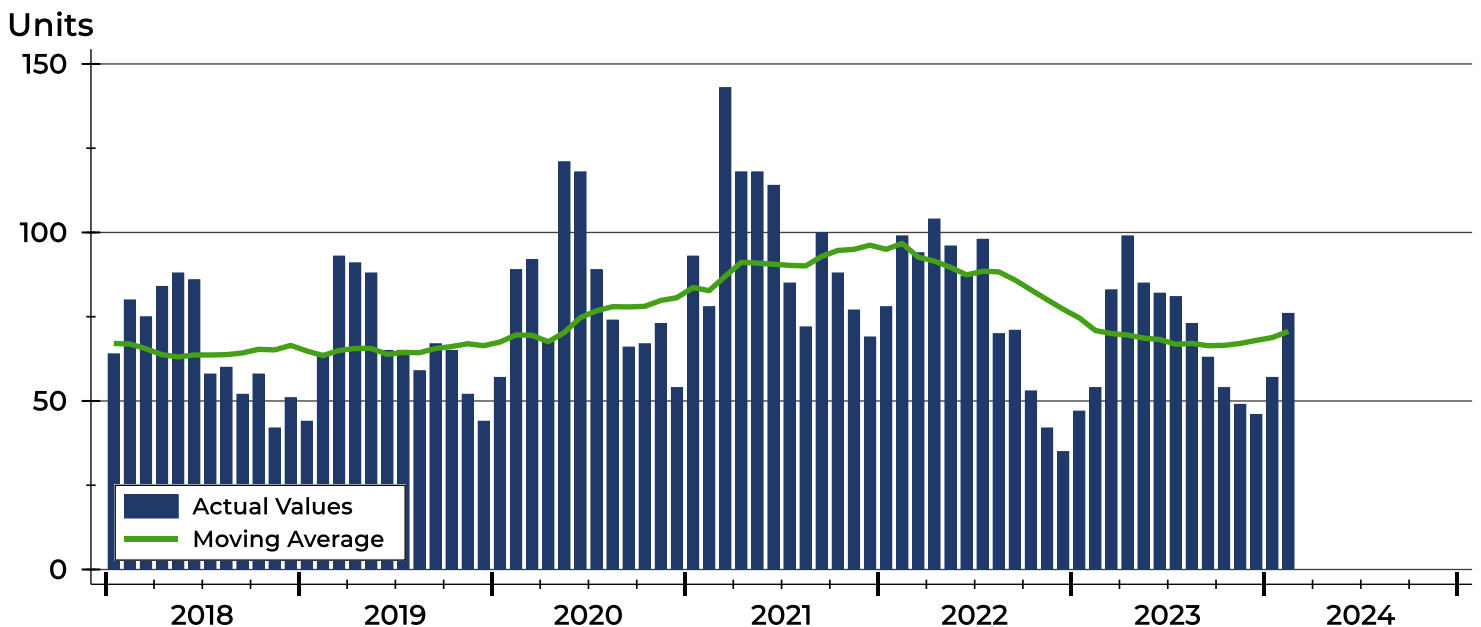
Riley County Contracts Written Analysis

Summary Statistics for Contracts Written		2024	February 2023	Change	2024	Year-to-Date 2023	Change
Contracts Written		76	54	40.7%	133	101	31.7%
Volume (1,000s)		20,965	14,670	42.9%	36,806	27,073	36.0%
Average	Sale Price	275,853	271,664	1.5%	276,740	268,047	3.2%
	Days on Market	23	30	-23.3%	37	33	12.1%
	Percent of Original	99.1%	97.8%	1.3%	98.1%	97.2%	0.9%
Median	Sale Price	257,450	237,400	8.4%	265,000	230,000	15.2%
	Days on Market	8	7	14.3%	12	13	-7.7%
	Percent of Original	100.0%	100.0%	0.0%	100.0%	99.4%	0.6%

A total of 76 contracts for sale were written in Riley County during the month of February, up from 54 in 2023. The median list price of these homes was \$257,450, up from \$237,400 the prior year.

Half of the homes that went under contract in February were on the market less than 8 days, compared to 7 days in February 2023.

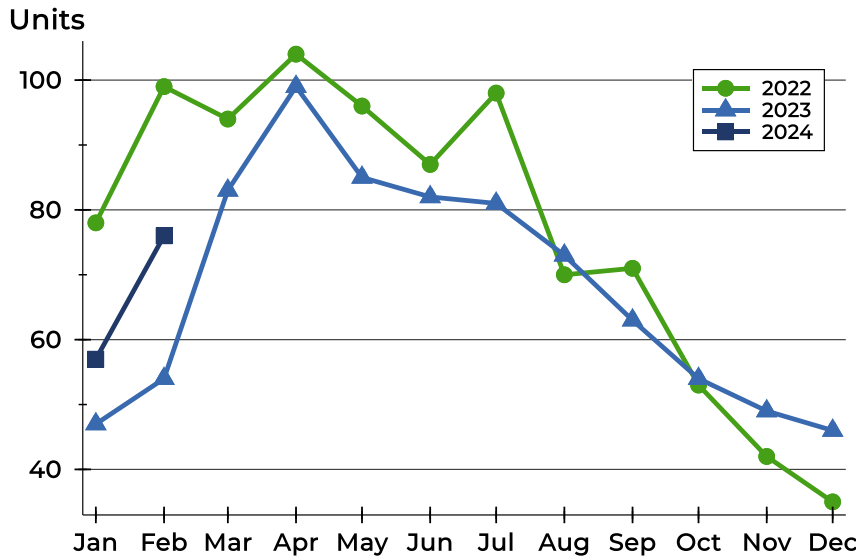
History of Contracts Written





Riley County Contracts Written Analysis

Contracts Written by Month



Month	2022	2023	2024
January	78	47	57
February	99	54	76
March	94	83	
April	104	99	
May	96	85	
June	87	82	
July	98	81	
August	70	73	
September	71	63	
October	53	54	
November	42	49	
December	35	46	

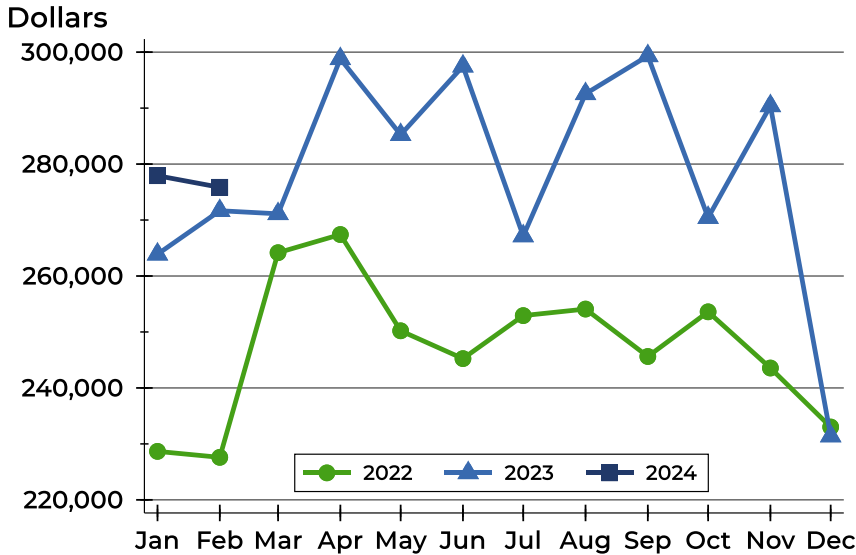
Contracts Written by Price Range

Price Range	Contracts Written		List Price		Days on Market		Price as % of Orig.	
	Number	Percent	Average	Median	Avg.	Med.	Avg.	Med.
Below \$25,000	0	0.0%	N/A	N/A	N/A	N/A	N/A	N/A
\$25,000-\$49,999	0	0.0%	N/A	N/A	N/A	N/A	N/A	N/A
\$50,000-\$99,999	4	5.3%	83,225	87,000	45	13	98.3%	100.0%
\$100,000-\$124,999	2	2.6%	118,250	118,250	23	23	99.0%	99.0%
\$125,000-\$149,999	2	2.6%	134,600	134,600	4	4	98.0%	98.0%
\$150,000-\$174,999	7	9.2%	166,757	168,000	13	3	99.4%	100.0%
\$175,000-\$199,999	7	9.2%	186,957	189,900	9	7	100.3%	100.0%
\$200,000-\$249,999	16	21.1%	228,538	225,000	15	6	99.1%	100.0%
\$250,000-\$299,999	10	13.2%	284,510	285,700	29	12	98.2%	100.0%
\$300,000-\$399,999	18	23.7%	335,750	329,950	22	11	98.8%	100.0%
\$400,000-\$499,999	5	6.6%	449,800	459,000	24	4	100.0%	100.0%
\$500,000-\$749,999	5	6.6%	571,209	559,000	61	10	100.1%	100.0%
\$750,000-\$999,999	0	0.0%	N/A	N/A	N/A	N/A	N/A	N/A
\$1,000,000 and up	0	0.0%	N/A	N/A	N/A	N/A	N/A	N/A



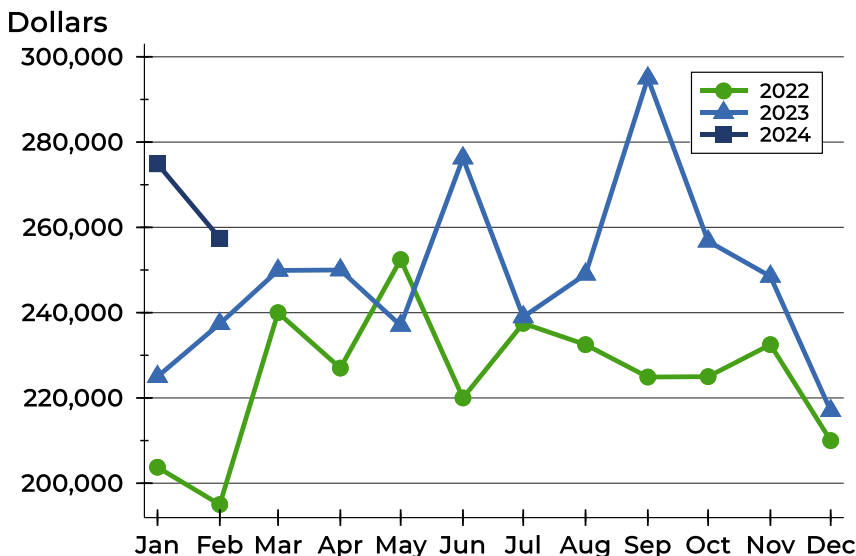
Riley County Contracts Written Analysis

Average Price



Month	2022	2023	2024
January	228,668	263,891	277,922
February	227,600	271,664	275,853
March	264,169	271,114	
April	267,411	298,818	
May	250,209	285,244	
June	245,241	297,489	
July	252,925	267,157	
August	254,097	292,554	
September	245,622	299,340	
October	253,600	270,441	
November	243,560	290,402	
December	233,020	231,409	

Median Price

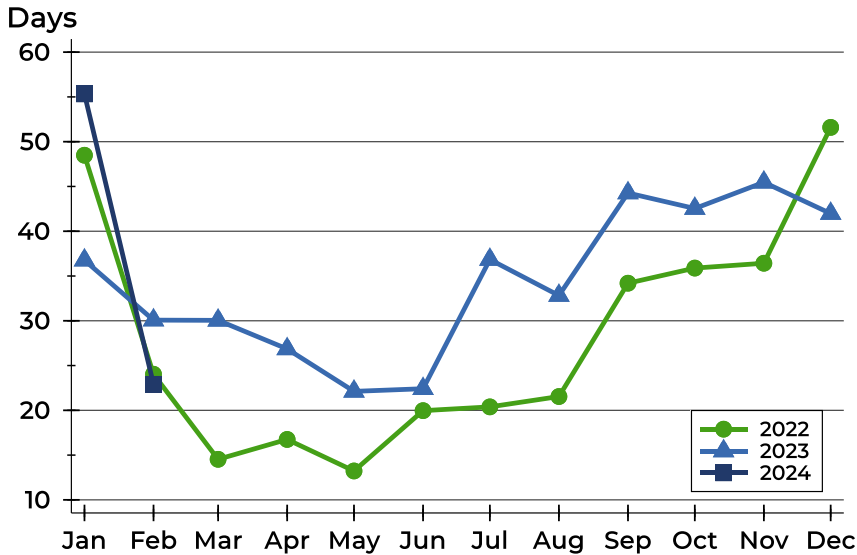


Month	2022	2023	2024
January	203,750	225,000	274,900
February	195,000	237,400	257,450
March	240,000	249,900	
April	227,000	250,000	
May	252,450	237,000	
June	220,000	276,250	
July	237,500	239,000	
August	232,500	249,000	
September	224,900	295,000	
October	225,000	256,750	
November	232,500	248,500	
December	210,000	217,000	



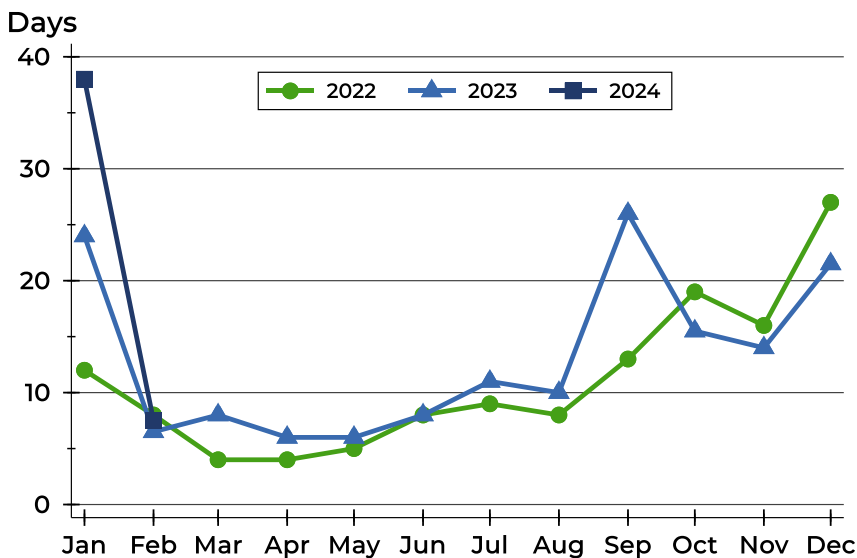
Riley County Contracts Written Analysis

Average DOM



Month	2022	2023	2024
January	48	37	55
February	24	30	23
March	15	30	23
April	17	27	23
May	13	22	23
June	20	22	23
July	20	37	23
August	22	33	23
September	34	44	23
October	36	43	23
November	36	45	23
December	52	42	23

Median DOM



Month	2022	2023	2024
January	12	24	38
February	8	7	8
March	4	8	8
April	4	6	8
May	5	6	8
June	8	8	8
July	9	11	8
August	8	10	8
September	13	26	8
October	19	16	8
November	16	14	8
December	27	22	8



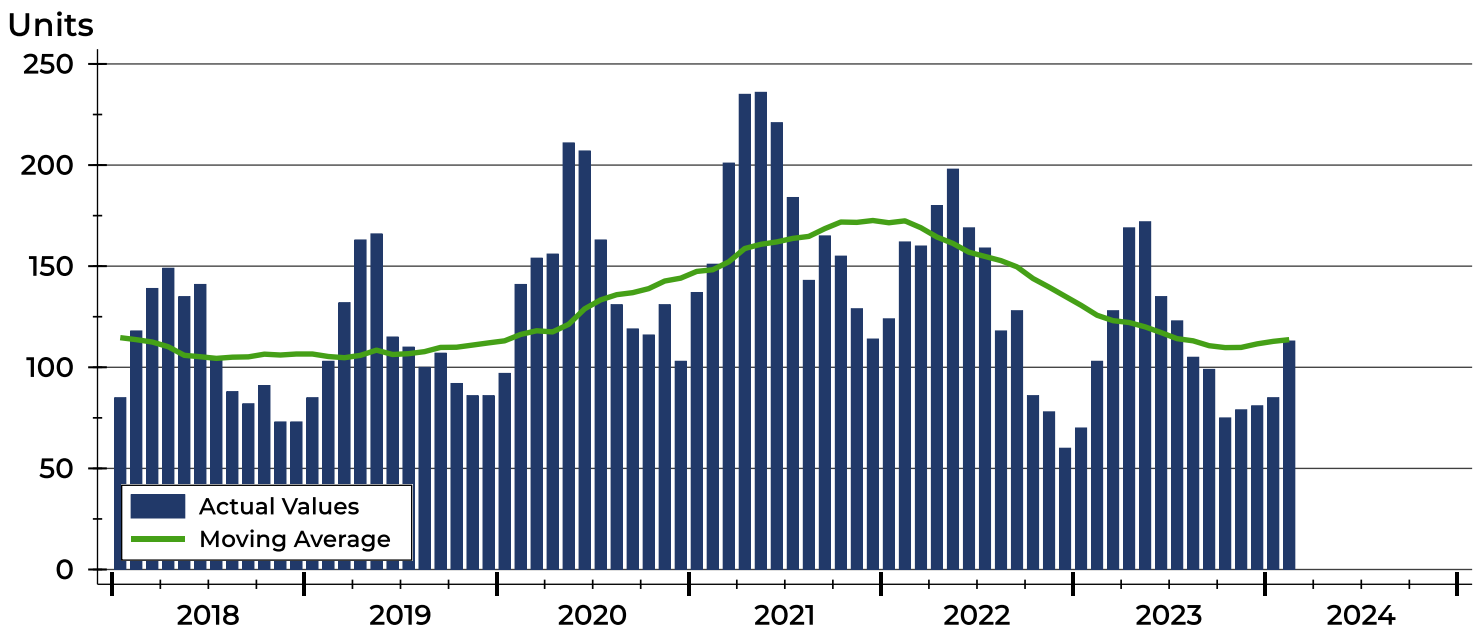
Riley County Pending Contracts Analysis

Summary Statistics for Pending Contracts		End of February		
		2024	2023	Change
Pending Contracts		113	103	9.7%
Volume (1,000s)		32,156	28,178	14.1%
Average	List Price	284,565	273,576	4.0%
	Days on Market	33	40	-17.5%
	Percent of Original	98.9%	98.0%	0.9%
Median	List Price	265,000	239,900	10.5%
	Days on Market	11	14	-21.4%
	Percent of Original	100.0%	100.0%	0.0%

A total of 113 listings in Riley County had contracts pending at the end of February, up from 103 contracts pending at the end of February 2023.

Pending contracts reflect listings with a contract in place at the end of the month. In contrast, contracts written measures the number of listings put under contract during the month.

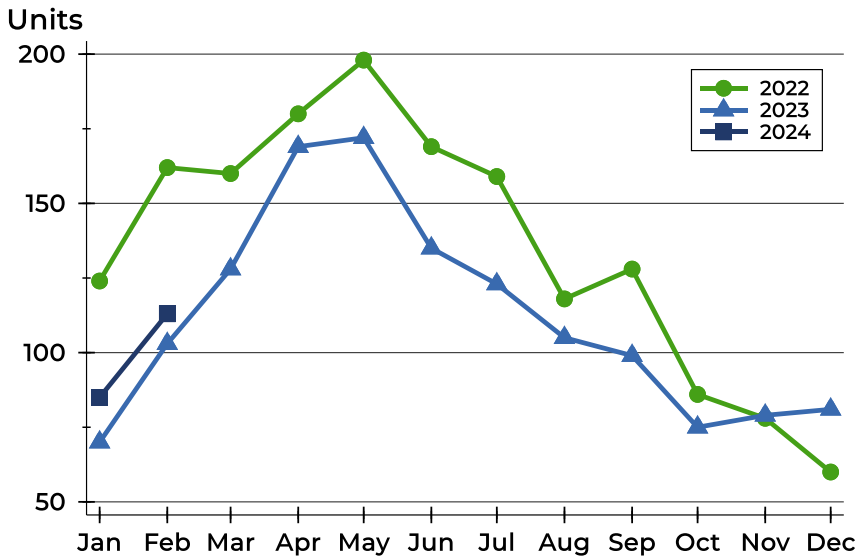
History of Pending Contracts





Riley County Pending Contracts Analysis

Pending Contracts by Month



Month	2022	2023	2024
January	124	70	85
February	162	103	113
March	160	128	
April	180	169	
May	198	172	
June	169	135	
July	159	123	
August	118	105	
September	128	99	
October	86	75	
November	78	79	
December	60	81	

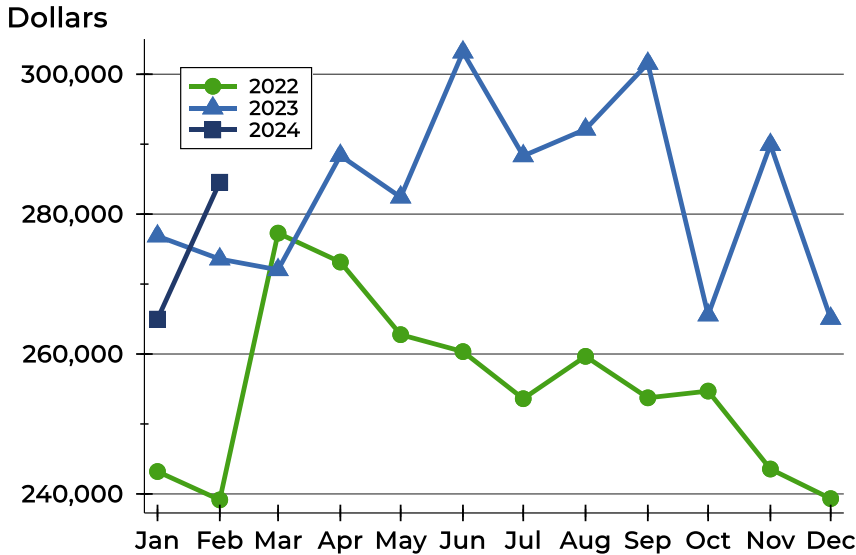
Pending Contracts by Price Range

Price Range	Pending Contracts		List Price		Days on Market		Price as % of Orig.	
	Number	Percent	Average	Median	Avg.	Med.	Avg.	Med.
Below \$25,000	0	0.0%	N/A	N/A	N/A	N/A	N/A	N/A
\$25,000-\$49,999	0	0.0%	N/A	N/A	N/A	N/A	N/A	N/A
\$50,000-\$99,999	4	3.5%	74,700	69,950	76	76	98.2%	100.0%
\$100,000-\$124,999	2	1.8%	118,250	118,250	23	23	99.0%	99.0%
\$125,000-\$149,999	4	3.5%	138,450	137,100	54	41	98.2%	100.0%
\$150,000-\$174,999	9	8.0%	166,367	165,000	13	3	99.7%	100.0%
\$175,000-\$199,999	11	9.7%	189,214	189,900	19	7	99.3%	100.0%
\$200,000-\$249,999	23	20.4%	226,452	225,000	39	7	99.1%	100.0%
\$250,000-\$299,999	19	16.8%	280,368	279,900	30	10	98.3%	100.0%
\$300,000-\$399,999	25	22.1%	337,088	329,000	31	14	98.3%	100.0%
\$400,000-\$499,999	9	8.0%	454,156	460,000	27	5	100.0%	100.0%
\$500,000-\$749,999	6	5.3%	573,341	571,500	58	15	100.1%	100.0%
\$750,000-\$999,999	1	0.9%	998,000	998,000	7	7	100.0%	100.0%
\$1,000,000 and up	0	0.0%	N/A	N/A	N/A	N/A	N/A	N/A



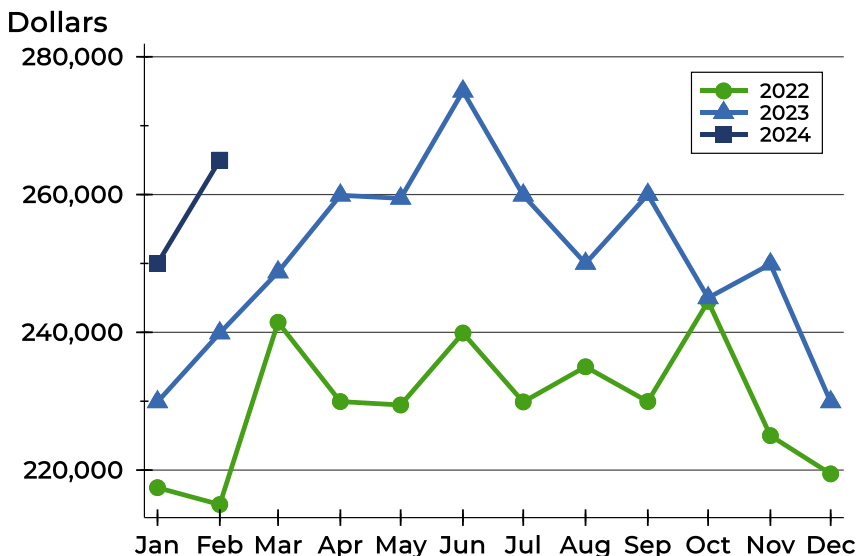
Riley County Pending Contracts Analysis

Average Price



Month	2022	2023	2024
January	243,204	276,864	264,992
February	239,149	273,576	284,565
March	277,287	272,038	
April	273,152	288,375	
May	262,768	282,422	
June	260,348	303,159	
July	253,615	288,326	
August	259,667	292,135	
September	253,740	301,537	
October	254,702	265,571	
November	243,560	289,928	
December	239,327	265,080	

Median Price

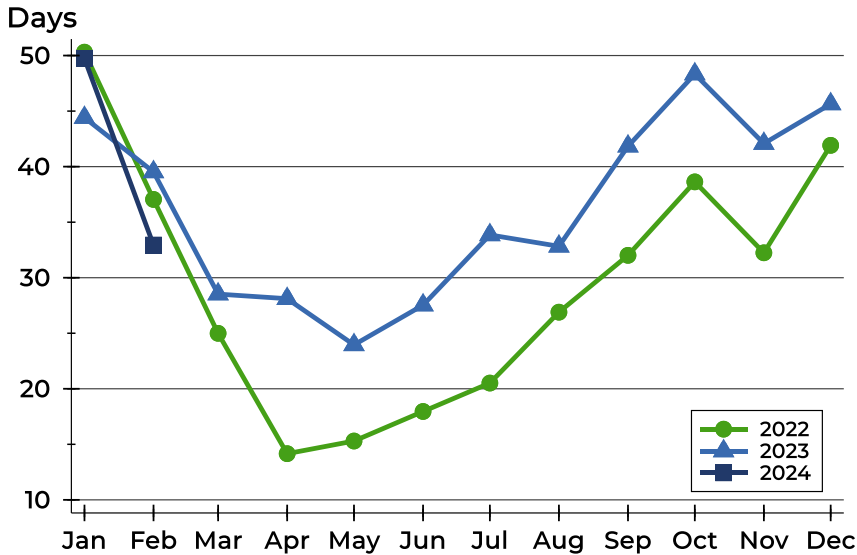


Month	2022	2023	2024
January	217,450	229,900	250,000
February	215,000	239,900	265,000
March	241,460	248,750	
April	229,950	259,900	
May	229,450	259,450	
June	239,900	275,000	
July	229,900	259,900	
August	235,000	250,000	
September	229,950	260,000	
October	244,500	245,000	
November	225,000	249,900	
December	219,450	229,900	



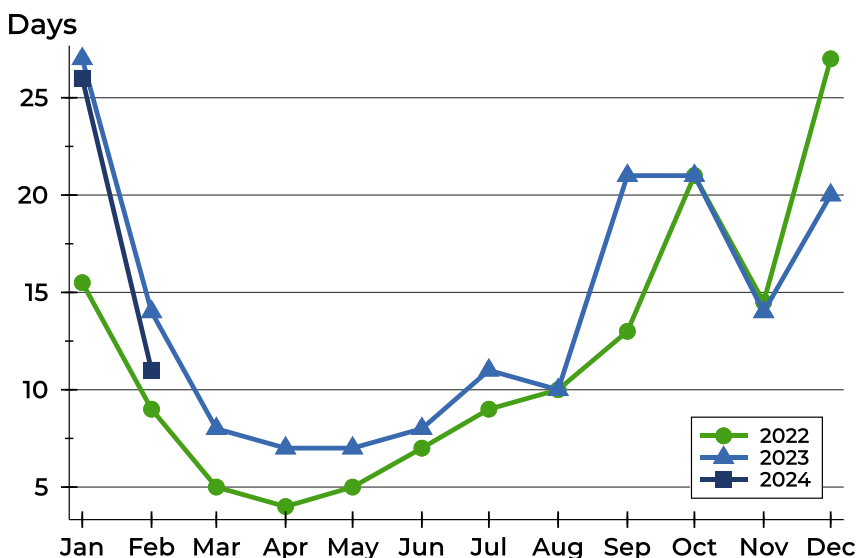
Riley County Pending Contracts Analysis

Average DOM



Month	2022	2023	2024
January	50	44	50
February	37	40	33
March	25	29	
April	14	28	
May	15	24	
June	18	28	
July	21	34	
August	27	33	
September	32	42	
October	39	48	
November	32	42	
December	42	46	

Median DOM



Month	2022	2023	2024
January	16	27	26
February	9	14	11
March	5	8	
April	4	7	
May	5	7	
June	7	8	
July	9	11	
August	10	10	
September	13	21	
October	21	21	
November	15	14	
December	27	20	