



**March  
2025**

# Flint Hills MLS Statistics



**FLINT HILLS  
ASSOCIATION  
OF REALTORS®**

## Riley County Housing Report



### Market Overview

#### Riley County Home Sales Fell in March

Total home sales in Riley County fell last month to 65 units, compared to 69 units in March 2024. Total sales volume was \$18.6 million, up from a year earlier.

The median sale price in March was \$279,900, up from \$245,000 a year earlier. Homes that sold in March were typically on the market for 11 days and sold for 98.0% of their list prices.

#### Riley County Active Listings Up at End of March

The total number of active listings in Riley County at the end of March was 148 units, up from 125 at the same point in 2024. This represents a 2.2 months' supply of homes available for sale. The median list price of homes on the market at the end of March was \$292,500.

There were 84 contracts written in March 2025 and 2024, showing no change over the year. At the end of the month, there were 121 contracts still pending.

### Report Contents

- Summary Statistics – Page 2
- Closed Listing Analysis – Page 3
- Active Listings Analysis – Page 7
- Months' Supply Analysis – Page 11
- New Listings Analysis – Page 12
- Contracts Written Analysis – Page 15
- Pending Contracts Analysis – Page 19

### Contact Information

Margaret Pendleton, Association Executive  
 Flint Hills Association of REALTORS®  
 205 S. Seth Child Road  
 Manhattan, KS 66502  
 785-776-1203  
[ae@flinthillsrealtors.net](mailto:ae@flinthillsrealtors.net)  
[www.flinthillsrealtors.net](http://www.flinthillsrealtors.net)



**March  
2025**

# Flint Hills MLS Statistics



**FLINT HILLS  
ASSOCIATION  
OF REALTORS®**

## Riley County Summary Statistics

March MLS Statistics Three-year History		Current Month			Year-to-Date		
		2025	2024	2023	2025	2024	2023
<b>Home Sales</b> Change from prior year		<b>65</b> -5.8%	<b>69</b> 32.7%	<b>52</b> -46.4%	<b>141</b> -16.1%	<b>168</b> 51.4%	<b>111</b> -48.4%
<b>Active Listings</b> Change from prior year		<b>148</b> 18.4%	<b>125</b> -1.6%	<b>127</b> 3.3%	<b>N/A</b>	<b>N/A</b>	<b>N/A</b>
<b>Months' Supply</b> Change from prior year		<b>2.2</b> 22.2%	<b>1.8</b> 0.0%	<b>1.8</b> 38.5%	<b>N/A</b>	<b>N/A</b>	<b>N/A</b>
<b>New Listings</b> Change from prior year		<b>106</b> 17.8%	<b>90</b> -10.9%	<b>101</b> -22.3%	<b>253</b> 5.0%	<b>241</b> 10.0%	<b>219</b> -29.8%
<b>Contracts Written</b> Change from prior year		<b>84</b> 0.0%	<b>84</b> 0.0%	<b>84</b> -10.6%	<b>197</b> -7.9%	<b>214</b> 15.7%	<b>185</b> -31.7%
<b>Pending Contracts</b> Change from prior year		<b>121</b> -11.0%	<b>136</b> 6.3%	<b>128</b> -20.0%	<b>N/A</b>	<b>N/A</b>	<b>N/A</b>
<b>Sales Volume (1,000s)</b> Change from prior year		<b>18,627</b> 7.2%	<b>17,379</b> 26.5%	<b>13,733</b> -29.3%	<b>41,658</b> -3.5%	<b>43,150</b> 53.6%	<b>28,096</b> -39.7%
Average	<b>Sale Price</b> Change from prior year	<b>286,566</b> 13.8%	<b>251,866</b> -4.6%	<b>264,104</b> 31.9%	<b>295,449</b> 15.0%	<b>256,843</b> 1.5%	<b>253,115</b> 16.8%
	<b>List Price of Actives</b> Change from prior year	<b>337,059</b> 2.4%	<b>329,145</b> -3.7%	<b>341,768</b> 10.7%	<b>N/A</b>	<b>N/A</b>	<b>N/A</b>
	<b>Days on Market</b> Change from prior year	<b>31</b> -16.2%	<b>37</b> -21.3%	<b>47</b> 27.0%	<b>32</b> -28.9%	<b>45</b> 2.3%	<b>44</b> 12.8%
	<b>Percent of List</b> Change from prior year	<b>98.1%</b> -1.1%	<b>99.2%</b> 1.7%	<b>97.5%</b> -2.8%	<b>98.1%</b> 0.3%	<b>97.8%</b> 0.1%	<b>97.7%</b> -1.6%
	<b>Percent of Original</b> Change from prior year	<b>97.3%</b> -1.0%	<b>98.3%</b> 3.3%	<b>95.2%</b> -4.3%	<b>97.0%</b> 0.6%	<b>96.4%</b> 0.6%	<b>95.8%</b> -1.9%
Median	<b>Sale Price</b> Change from prior year	<b>279,900</b> 14.2%	<b>245,000</b> 6.5%	<b>230,000</b> 35.3%	<b>274,000</b> 11.0%	<b>246,750</b> 10.9%	<b>222,500</b> 15.6%
	<b>List Price of Actives</b> Change from prior year	<b>292,500</b> 4.5%	<b>279,900</b> -3.1%	<b>289,000</b> 20.5%	<b>N/A</b>	<b>N/A</b>	<b>N/A</b>
	<b>Days on Market</b> Change from prior year	<b>11</b> 37.5%	<b>8</b> -73.3%	<b>30</b> 233.3%	<b>11</b> -31.3%	<b>16</b> -42.9%	<b>28</b> 133.3%
	<b>Percent of List</b> Change from prior year	<b>98.0%</b> -2.0%	<b>100.0%</b> 1.0%	<b>99.0%</b> -1.0%	<b>98.5%</b> 0.0%	<b>98.5%</b> -0.3%	<b>98.8%</b> -1.2%
	<b>Percent of Original</b> Change from prior year	<b>97.5%</b> -2.0%	<b>99.5%</b> 1.9%	<b>97.6%</b> -2.4%	<b>97.8%</b> 0.1%	<b>97.7%</b> 0.3%	<b>97.4%</b> -2.6%

Note: Year-to-date statistics cannot be calculated for Active Listings, Months' Supply and Pending Contracts.



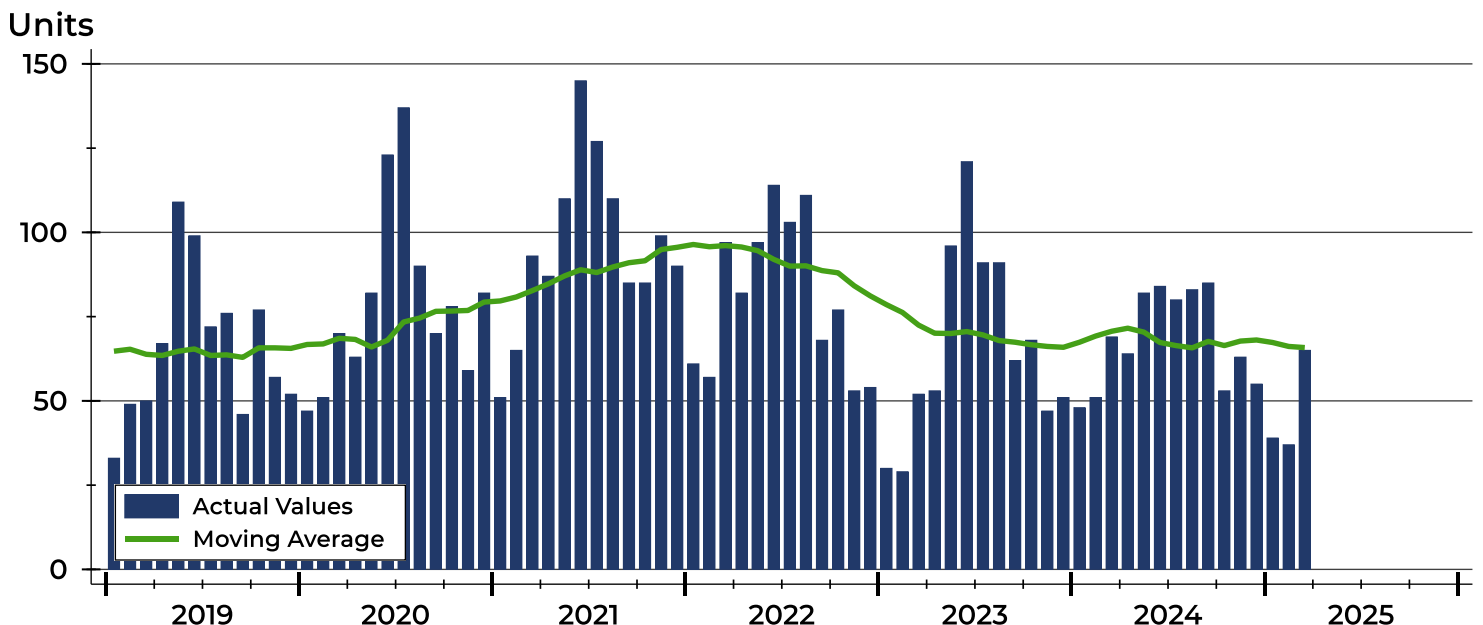
# Riley County Closed Listings Analysis

Summary Statistics for Closed Listings		2025	March 2024	Change	2025	Year-to-Date 2024	Change
Closed Listings		65	69	-5.8%	141	168	-16.1%
Volume (1,000s)		18,627	17,379	7.2%	41,658	43,150	-3.5%
Months' Supply		2.2	1.8	22.2%	N/A	N/A	N/A
Average	Sale Price	286,566	251,866	13.8%	295,449	256,843	15.0%
	Days on Market	31	37	-16.2%	32	45	-28.9%
	Percent of List	98.1%	99.2%	-1.1%	98.1%	97.8%	0.3%
	Percent of Original	97.3%	98.3%	-1.0%	97.0%	96.4%	0.6%
Median	Sale Price	279,900	245,000	14.2%	274,000	246,750	11.0%
	Days on Market	11	8	37.5%	11	16	-31.3%
	Percent of List	98.0%	100.0%	-2.0%	98.5%	98.5%	0.0%
	Percent of Original	97.5%	99.5%	-2.0%	97.8%	97.7%	0.1%

A total of 65 homes sold in Riley County in March, down from 69 units in March 2024. Total sales volume rose to \$18.6 million compared to \$17.4 million in the previous year.

The median sales price in March was \$279,900, up 14.2% compared to the prior year. Median days on market was 11 days, the same as February, and up from 8 in March 2024.

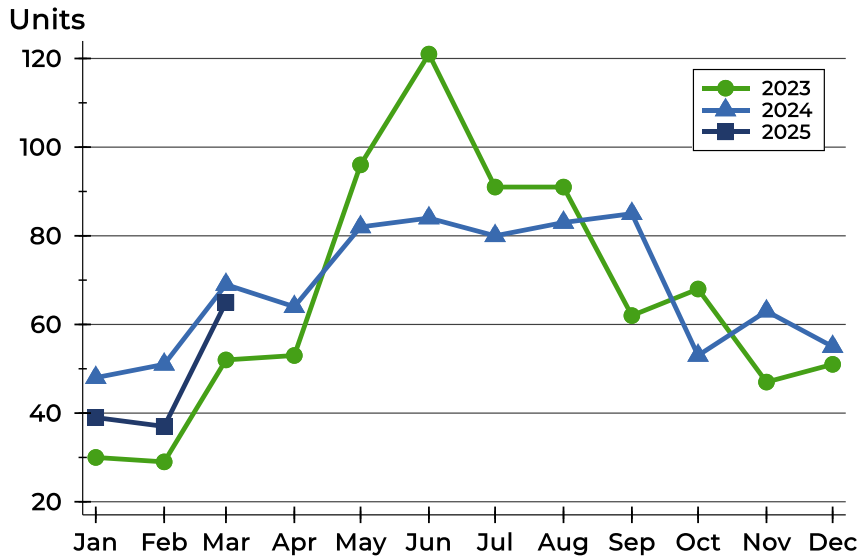
## History of Closed Listings





## Riley County Closed Listings Analysis

### Closed Listings by Month



Month	2023	2024	2025
January	30	48	<b>39</b>
February	29	51	<b>37</b>
March	52	69	<b>65</b>
April	53	64	
May	96	82	
June	121	84	
July	91	80	
August	91	83	
September	62	85	
October	68	53	
November	47	63	
December	51	55	

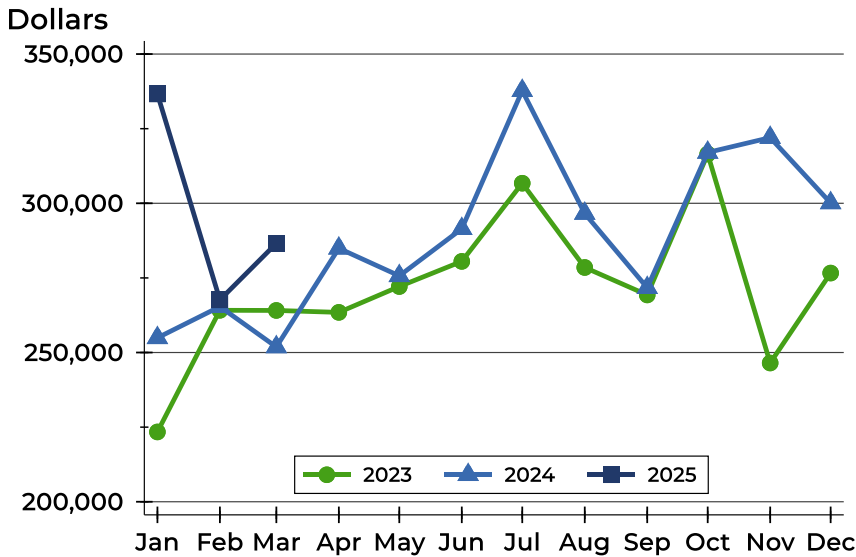
### Closed Listings by Price Range

Price Range	Sales		Months' Supply	Sale Price		Days on Market		Price as % of List		Price as % of Orig.	
	Number	Percent		Average	Median	Avg.	Med.	Avg.	Med.	Avg.	Med.
Below \$25,000	0	0.0%	N/A	N/A	N/A	N/A	N/A	N/A	N/A	N/A	N/A
\$25,000-\$49,999	1	1.5%	0.0	48,000	48,000	102	102	73.8%	73.8%	73.8%	73.8%
\$50,000-\$99,999	0	0.0%	N/A	N/A	N/A	N/A	N/A	N/A	N/A	N/A	N/A
\$100,000-\$124,999	2	3.1%	4.7	111,750	111,750	51	51	93.7%	93.7%	93.7%	93.7%
\$125,000-\$149,999	2	3.1%	4.7	144,450	144,450	24	24	101.5%	101.5%	101.5%	101.5%
\$150,000-\$174,999	2	3.1%	1.6	151,500	151,500	21	21	91.0%	91.0%	91.0%	91.0%
\$175,000-\$199,999	8	12.3%	0.9	187,500	185,000	37	34	99.4%	99.3%	97.0%	96.8%
\$200,000-\$249,999	12	18.5%	1.4	222,375	221,500	12	5	99.9%	98.9%	99.7%	98.9%
\$250,000-\$299,999	13	20.0%	2.2	275,692	280,000	16	4	99.4%	100.0%	98.6%	100.0%
\$300,000-\$399,999	17	26.2%	3.0	342,218	335,000	54	40	97.8%	97.3%	96.4%	96.0%
\$400,000-\$499,999	5	7.7%	1.0	452,440	460,000	26	13	96.7%	96.3%	96.3%	95.2%
\$500,000-\$749,999	3	4.6%	3.6	643,667	639,000	5	5	100.0%	100.0%	100.0%	100.0%
\$750,000-\$999,999	0	0.0%	N/A	N/A	N/A	N/A	N/A	N/A	N/A	N/A	N/A
\$1,000,000 and up	0	0.0%	N/A	N/A	N/A	N/A	N/A	N/A	N/A	N/A	N/A



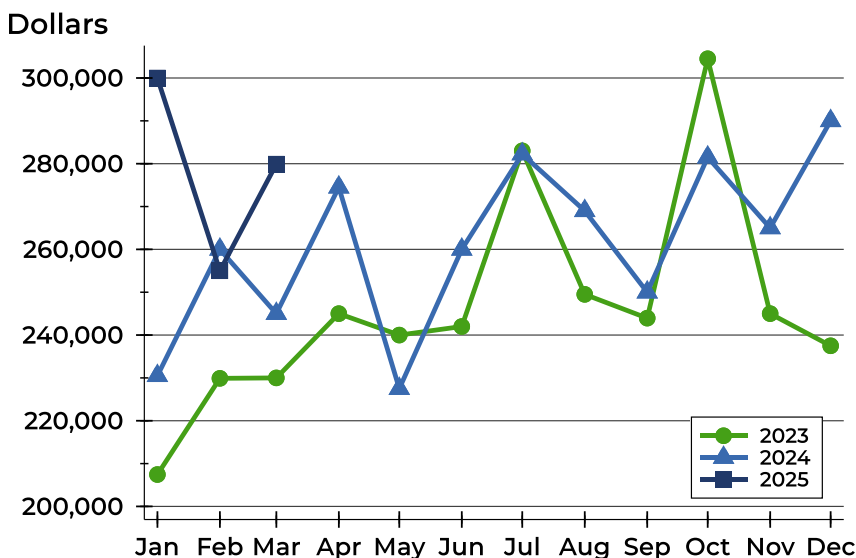
# Riley County Closed Listings Analysis

## Average Price



Month	2023	2024	2025
January	223,398	254,923	<b>336,632</b>
February	264,153	265,385	<b>267,646</b>
March	264,104	251,866	<b>286,566</b>
April	263,458	284,918	
May	272,119	275,698	
June	280,542	291,474	
July	306,725	337,739	
August	278,493	296,589	
September	269,304	271,717	
October	316,505	317,039	
November	246,497	322,011	
December	276,629	300,116	

## Median Price

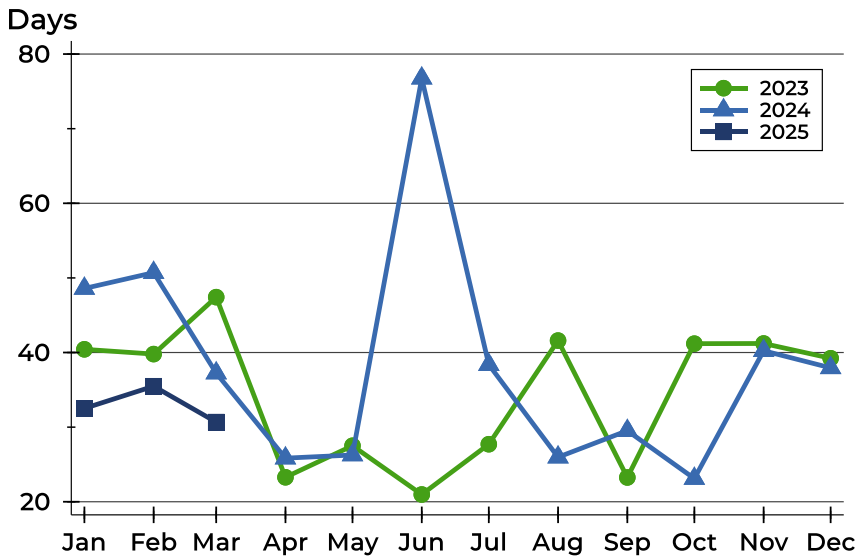


Month	2023	2024	2025
January	207,450	230,500	<b>300,000</b>
February	229,900	260,000	<b>255,000</b>
March	230,000	245,000	<b>279,900</b>
April	245,000	274,500	
May	240,000	227,500	
June	242,000	260,000	
July	283,000	282,250	
August	249,500	269,000	
September	243,950	250,000	
October	304,500	281,500	
November	245,000	265,000	
December	237,500	290,000	



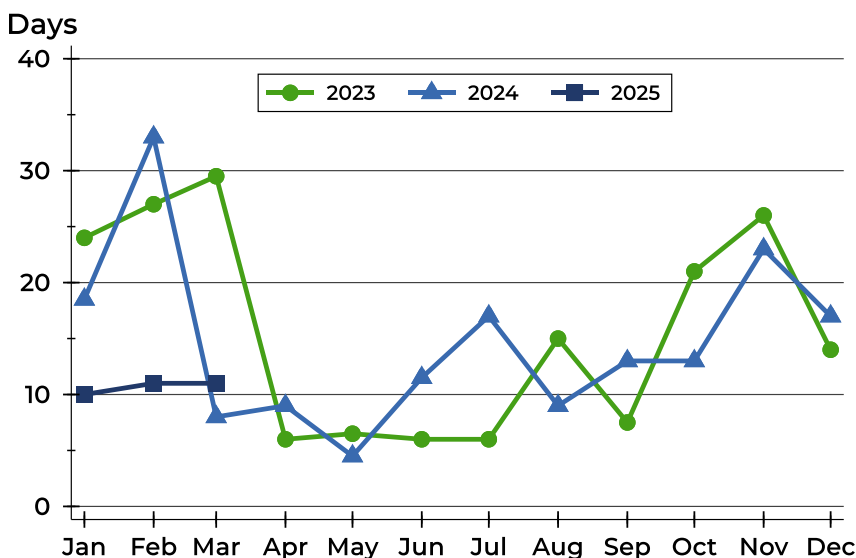
# Riley County Closed Listings Analysis

## Average DOM



Month	2023	2024	2025
January	40	49	33
February	40	51	35
March	47	37	31
April	23	26	
May	28	26	
June	21	77	
July	28	38	
August	42	26	
September	23	30	
October	41	23	
November	41	40	
December	39	38	

## Median DOM



Month	2023	2024	2025
January	24	19	10
February	27	33	11
March	30	8	11
April	6	9	
May	7	5	
June	6	12	
July	6	17	
August	15	9	
September	8	13	
October	21	13	
November	26	23	
December	14	17	



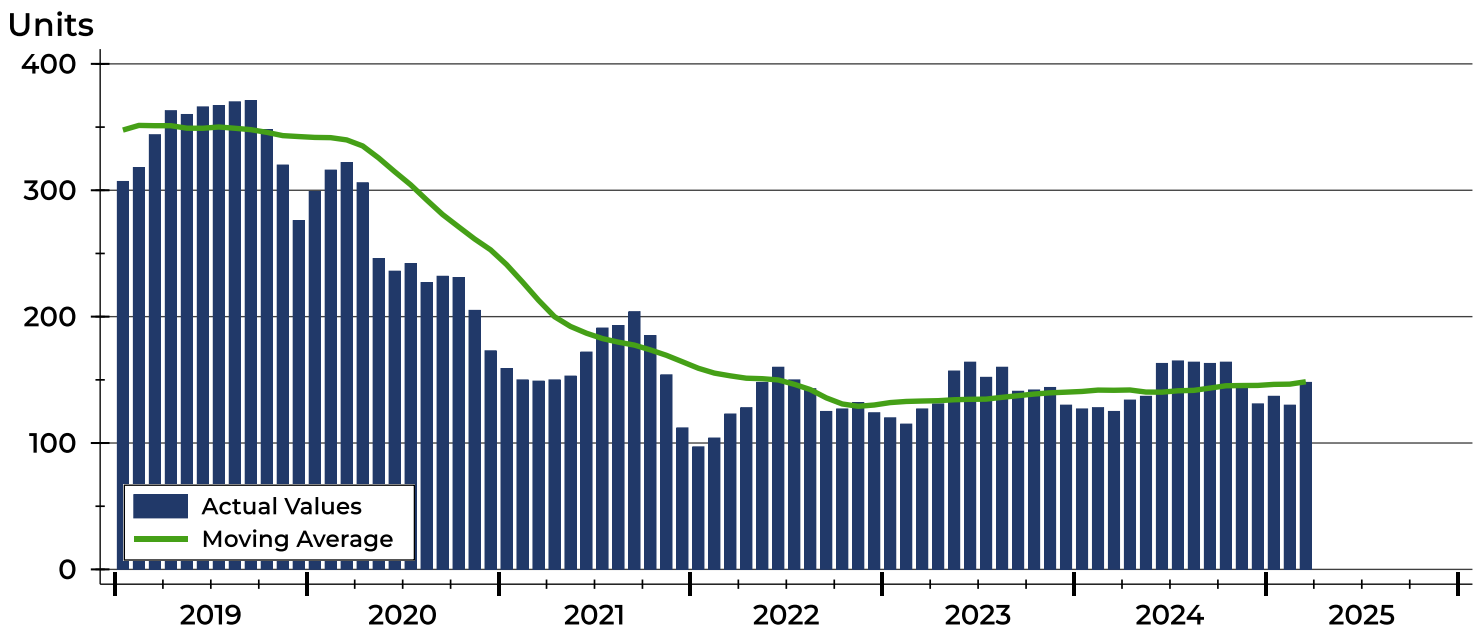
# Riley County Active Listings Analysis

Summary Statistics for Active Listings		2025	End of March 2024	Change
Active Listings		148	125	18.4%
Volume (1,000s)		49,885	41,143	21.2%
Months' Supply		2.2	1.8	22.2%
Average	List Price	337,059	329,145	2.4%
	Days on Market	73	72	1.4%
	Percent of Original	99.0%	97.6%	1.4%
Median	List Price	292,500	279,900	4.5%
	Days on Market	37	48	-22.9%
	Percent of Original	100.0%	100.0%	0.0%

A total of 148 homes were available for sale in Riley County at the end of March. This represents a 2.2 months' supply of active listings.

The median list price of homes on the market at the end of March was \$292,500, up 4.5% from 2024. The typical time on market for active listings was 36 days, down from 48 days a year earlier.

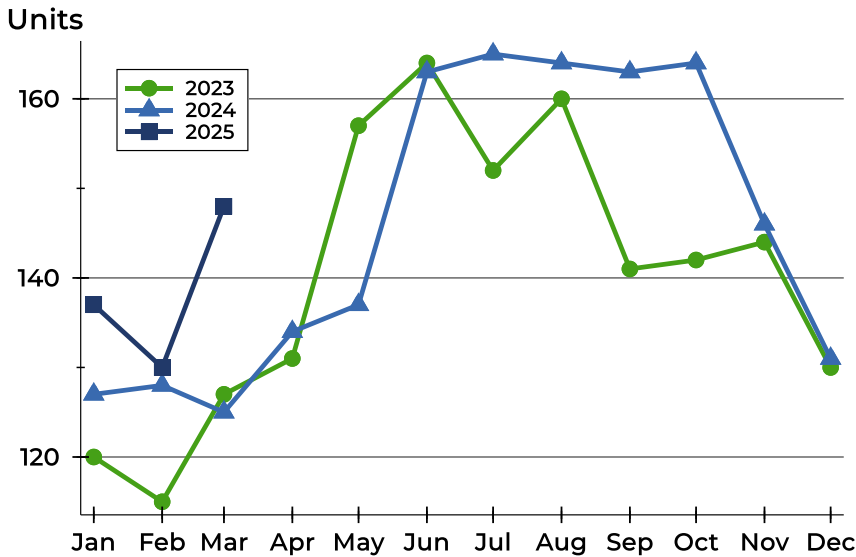
## History of Active Listings





## Riley County Active Listings Analysis

### Active Listings by Month



Month	2023	2024	2025
<b>January</b>	120	127	<b>137</b>
<b>February</b>	115	128	<b>130</b>
<b>March</b>	127	125	<b>148</b>
<b>April</b>	131	134	
<b>May</b>	157	137	
<b>June</b>	164	163	
<b>July</b>	152	165	
<b>August</b>	160	164	
<b>September</b>	141	163	
<b>October</b>	142	164	
<b>November</b>	144	146	
<b>December</b>	130	131	

### Active Listings by Price Range

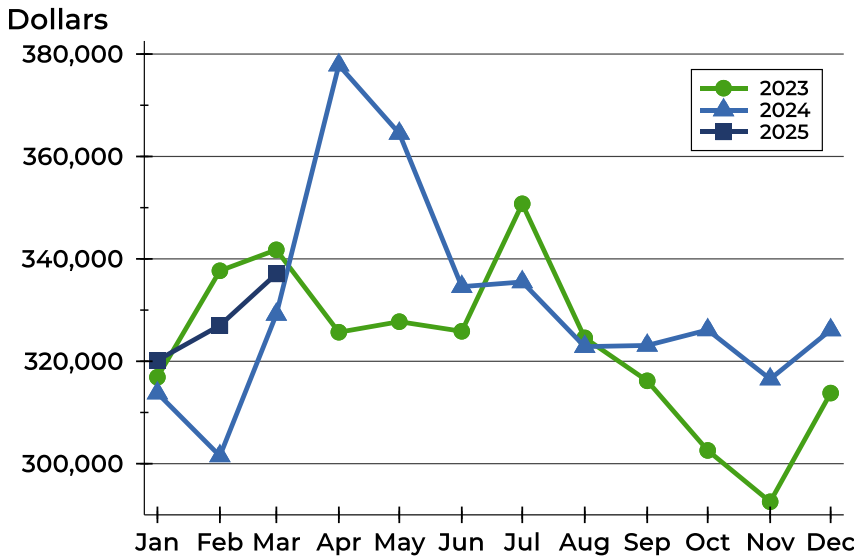
Price Range	Active Listings		Months' Supply	List Price		Days on Market		Price as % of Orig.	
	Number	Percent		Average	Median	Avg.	Med.	Avg.	Med.
Below \$25,000	0	0.0%	N/A	N/A	N/A	N/A	N/A	N/A	N/A
\$25,000-\$49,999	0	0.0%	0.0	N/A	N/A	N/A	N/A	N/A	N/A
\$50,000-\$99,999	3	2.0%	N/A	96,300	96,500	90	68	95.6%	100.0%
\$100,000-\$124,999	9	6.1%	4.7	114,411	115,000	39	43	95.1%	100.0%
\$125,000-\$149,999	9	6.1%	4.7	135,544	133,000	67	61	98.7%	100.0%
\$150,000-\$174,999	6	4.1%	1.6	163,150	166,000	166	95	98.2%	99.0%
\$175,000-\$199,999	6	4.1%	0.9	184,000	182,500	167	141	98.7%	98.7%
\$200,000-\$249,999	19	12.8%	1.4	226,758	225,000	55	28	99.0%	100.0%
\$250,000-\$299,999	26	17.6%	2.2	274,369	275,000	74	55	102.4%	100.0%
\$300,000-\$399,999	41	27.7%	3.0	353,400	357,900	67	33	98.8%	100.0%
\$400,000-\$499,999	6	4.1%	1.0	433,300	427,400	50	19	99.3%	100.0%
\$500,000-\$749,999	16	10.8%	3.6	629,631	649,500	54	34	99.1%	100.0%
\$750,000-\$999,999	5	3.4%	N/A	871,600	875,000	90	70	94.2%	100.0%
\$1,000,000 and up	2	1.4%	N/A	1,150,000	1,150,000	152	152	100.0%	100.0%





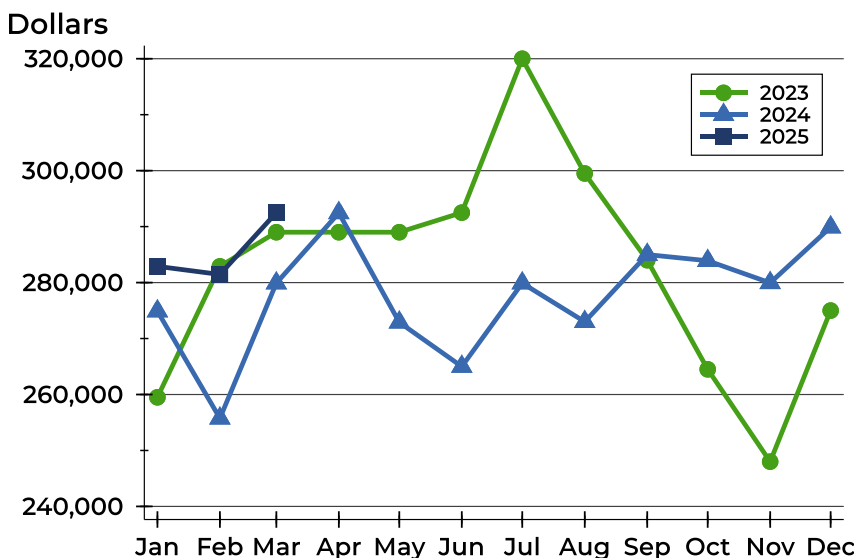
# Riley County Active Listings Analysis

## Average Price



Month	2023	2024	2025
January	316,889	313,781	<b>320,191</b>
February	337,680	301,514	<b>327,012</b>
March	341,768	329,145	<b>337,059</b>
April	325,675	377,844	
May	327,740	364,496	
June	325,855	334,580	
July	350,757	335,498	
August	324,571	322,859	
September	316,188	323,097	
October	302,591	326,126	
November	292,564	316,524	
December	313,791	326,110	

## Median Price

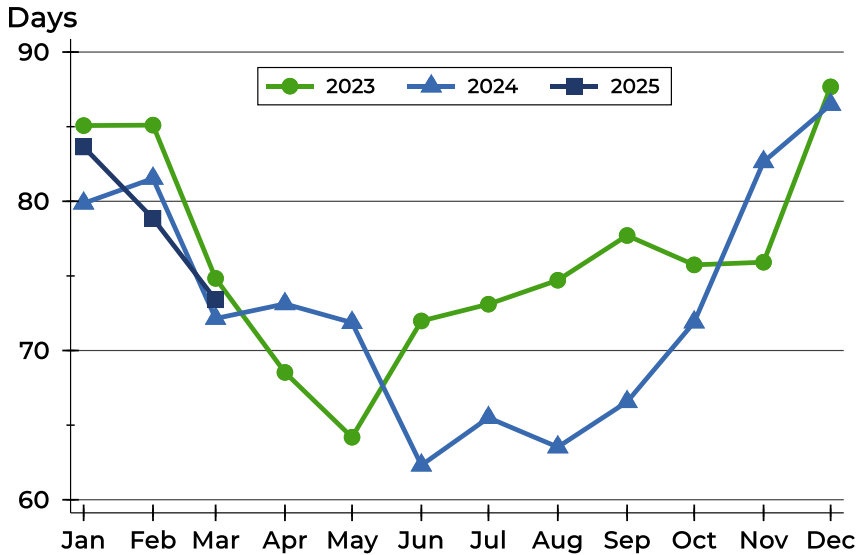


Month	2023	2024	2025
January	259,500	274,900	<b>282,900</b>
February	282,900	255,750	<b>281,450</b>
March	289,000	279,900	<b>292,500</b>
April	289,000	292,450	
May	289,000	272,900	
June	292,500	265,000	
July	320,000	279,900	
August	299,500	273,000	
September	284,000	285,000	
October	264,500	283,900	
November	248,000	279,950	
December	275,000	289,900	



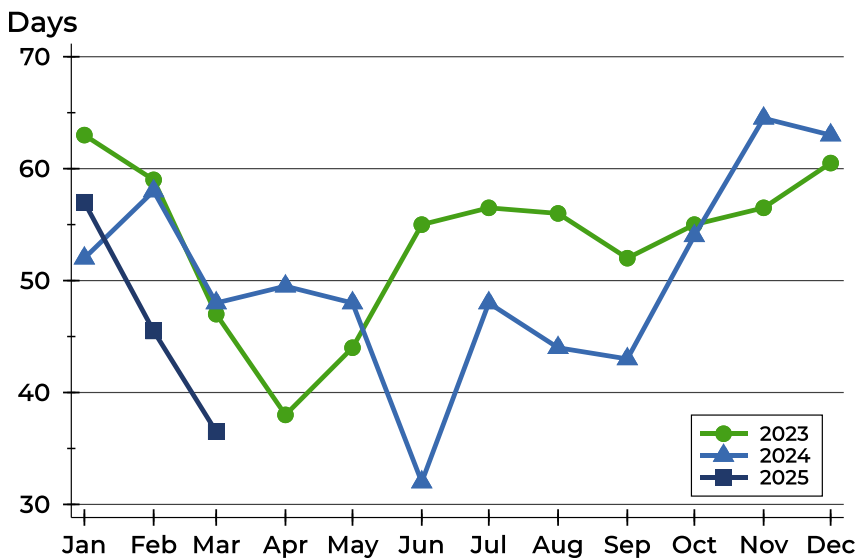
# Riley County Active Listings Analysis

## Average DOM



Month	2023	2024	2025
January	85	80	<b>84</b>
February	85	82	<b>79</b>
March	75	72	<b>73</b>
April	69	73	
May	64	72	
June	72	62	
July	73	65	
August	75	64	
September	78	67	
October	76	72	
November	76	83	
December	88	86	

## Median DOM

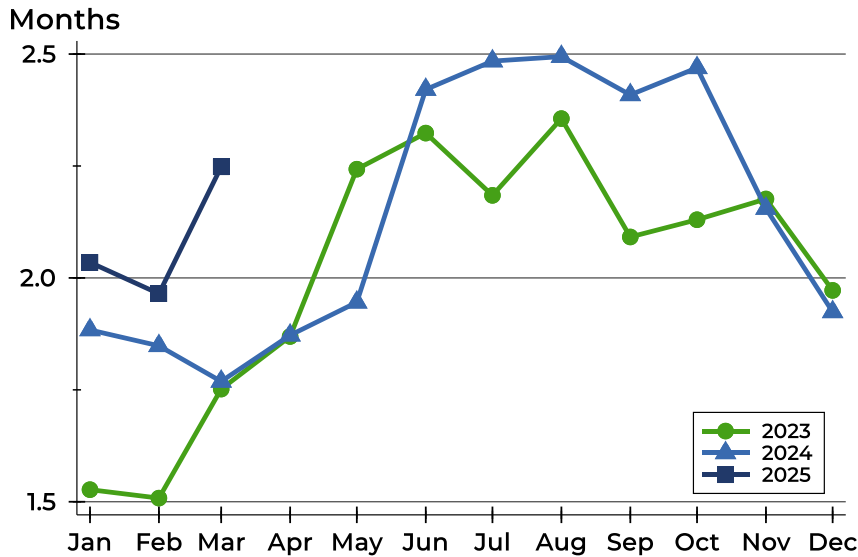


Month	2023	2024	2025
January	63	52	<b>57</b>
February	59	58	<b>46</b>
March	47	48	<b>37</b>
April	38	50	
May	44	48	
June	55	32	
July	57	48	
August	56	44	
September	52	43	
October	55	54	
November	57	65	
December	61	63	



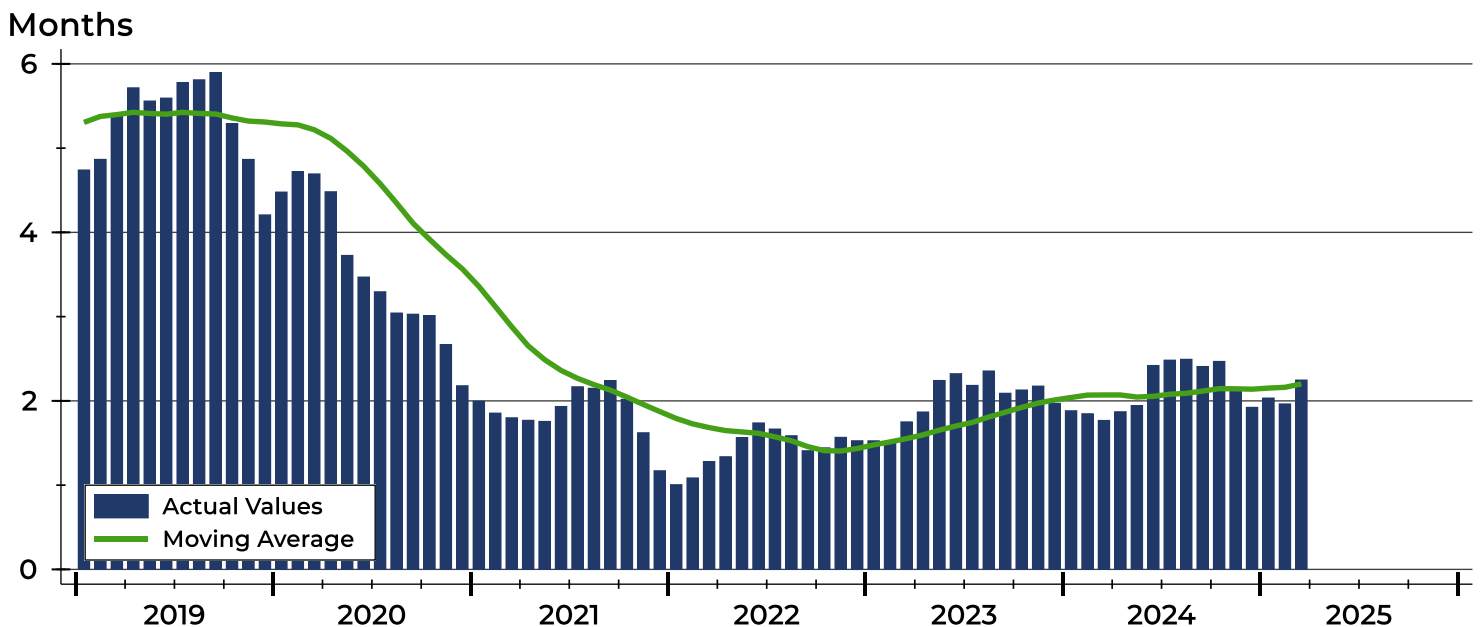
# Riley County Months' Supply Analysis

## Months' Supply by Month



Month	2023	2024	2025
January	1.5	1.9	2.0
February	1.5	1.8	2.0
March	1.8	1.8	2.2
April	1.9	1.9	1.9
May	2.2	1.9	1.9
June	2.3	2.4	2.4
July	2.2	2.5	2.5
August	2.4	2.5	2.5
September	2.1	2.4	2.4
October	2.1	2.5	2.5
November	2.2	2.2	2.2
December	2.0	1.9	1.9

## History of Month's Supply





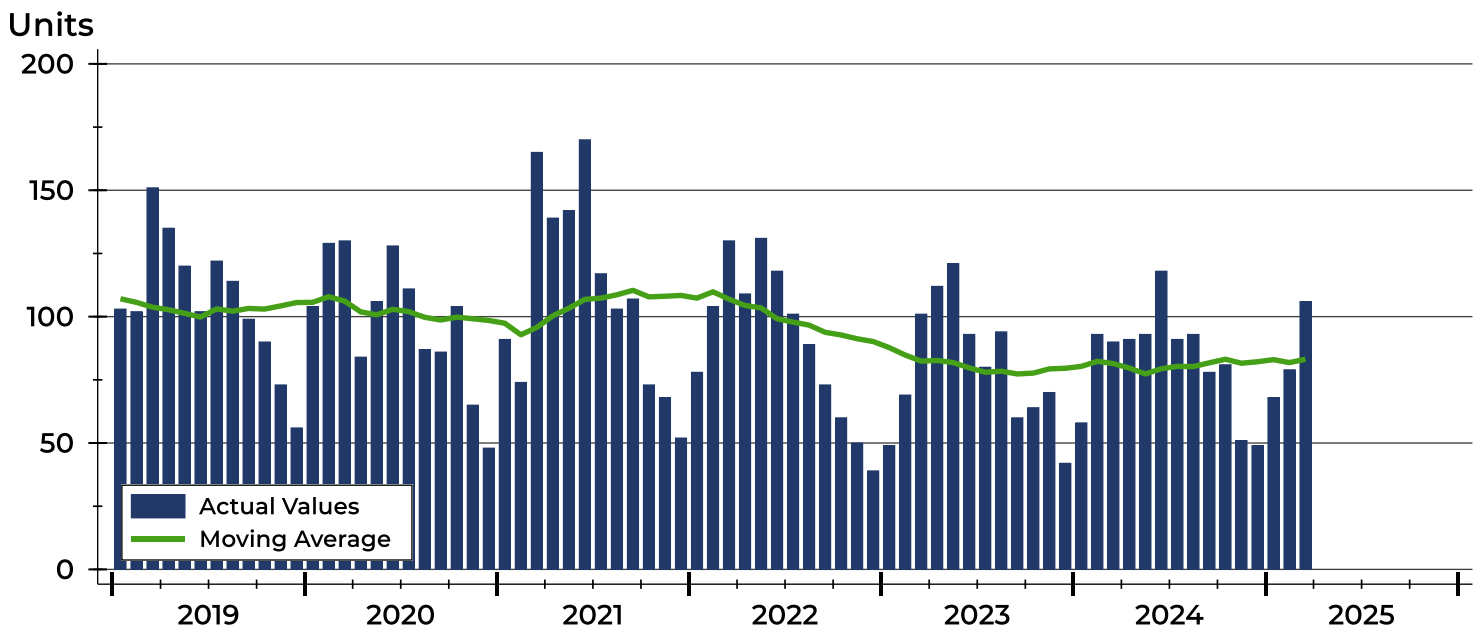
# Riley County New Listings Analysis

Summary Statistics for New Listings		2025	March 2024	Change
Current Month	New Listings	106	90	17.8%
	Volume (1,000s)	34,491	28,481	21.1%
	Average List Price	325,391	316,455	2.8%
	Median List Price	289,500	271,950	6.5%
Year-to-Date	New Listings	253	241	5.0%
	Volume (1,000s)	82,097	69,983	17.3%
	Average List Price	324,493	290,387	11.7%
	Median List Price	290,000	260,000	11.5%

A total of 106 new listings were added in Riley County during March, up 17.8% from the same month in 2024. Year-to-date Riley County has seen 253 new listings.

The median list price of these homes was \$289,500 up from \$271,950 in 2024.

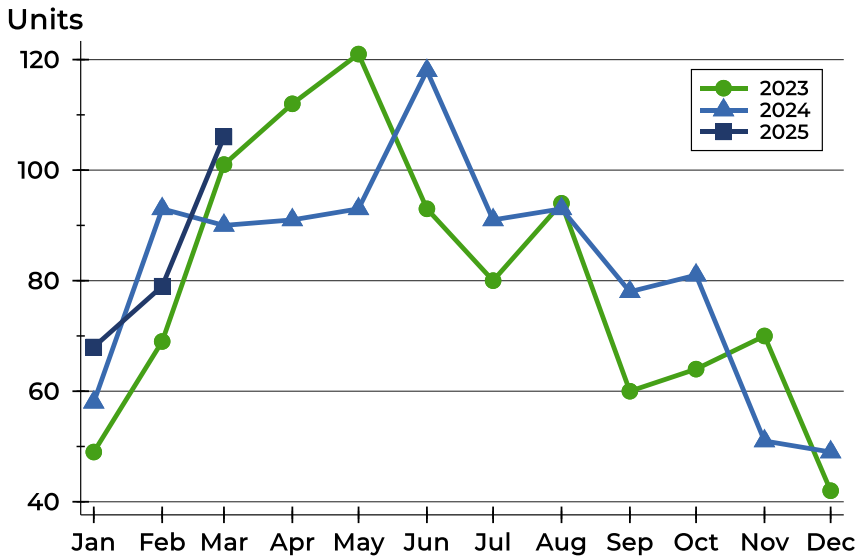
## History of New Listings





## Riley County New Listings Analysis

### New Listings by Month



Month	2023	2024	2025
January	49	58	<b>68</b>
February	69	93	<b>79</b>
March	101	90	<b>106</b>
April	112	91	
May	121	93	
June	93	118	
July	80	91	
August	94	93	
September	60	78	
October	64	81	
November	70	51	
December	42	49	

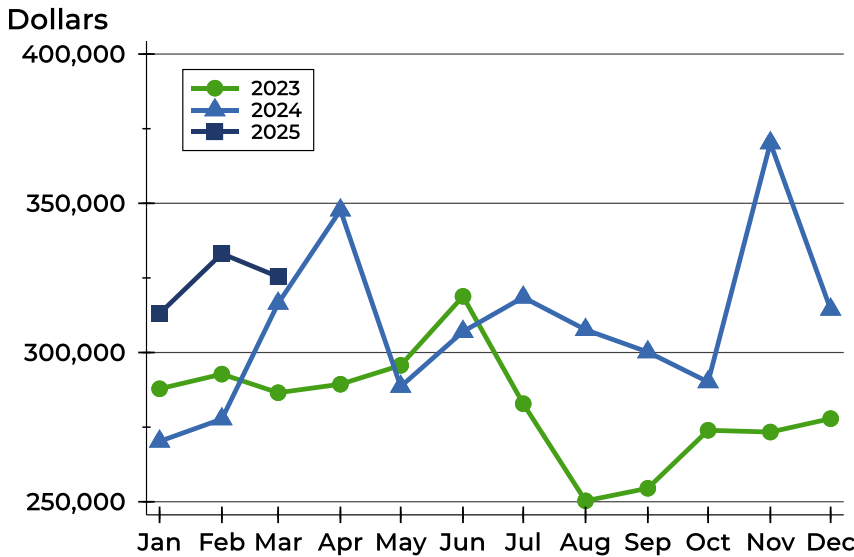
### New Listings by Price Range

Price Range	New Listings		List Price		Days on Market		Price as % of Orig.	
	Number	Percent	Average	Median	Avg.	Med.	Avg.	Med.
Below \$25,000	0	0.0%	N/A	N/A	N/A	N/A	N/A	N/A
\$25,000-\$49,999	0	0.0%	N/A	N/A	N/A	N/A	N/A	N/A
\$50,000-\$99,999	0	0.0%	N/A	N/A	N/A	N/A	N/A	N/A
\$100,000-\$124,999	2	1.9%	114,450	114,450	9	9	100.0%	100.0%
\$125,000-\$149,999	4	3.8%	135,500	133,500	13	8	99.5%	100.0%
\$150,000-\$174,999	2	1.9%	152,500	152,500	6	6	100.0%	100.0%
\$175,000-\$199,999	8	7.5%	188,413	189,950	5	2	100.0%	100.0%
\$200,000-\$249,999	16	15.1%	223,638	225,000	13	9	99.9%	100.0%
\$250,000-\$299,999	27	25.5%	274,444	275,000	13	8	99.1%	100.0%
\$300,000-\$399,999	27	25.5%	343,759	339,000	12	11	99.6%	100.0%
\$400,000-\$499,999	9	8.5%	427,189	420,000	13	7	100.0%	100.0%
\$500,000-\$749,999	8	7.5%	624,850	609,500	19	18	99.1%	100.0%
\$750,000-\$999,999	2	1.9%	847,500	847,500	20	20	100.0%	100.0%
\$1,000,000 and up	1	0.9%	1,100,000	1,100,000	16	16	100.0%	100.0%



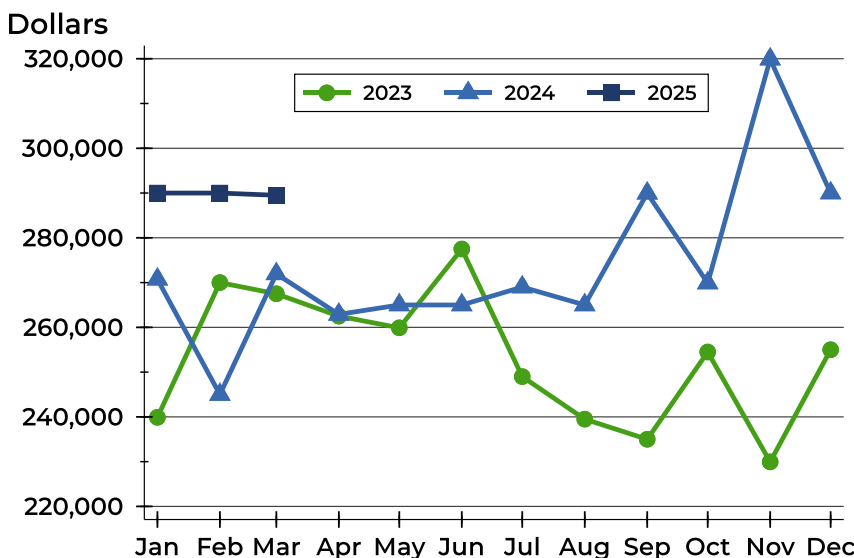
# Riley County New Listings Analysis

## Average Price



Month	2023	2024	2025
January	287,852	270,247	313,049
February	292,767	277,719	333,139
March	286,544	316,455	325,391
April	289,376	347,701	
May	295,696	288,602	
June	318,828	307,003	
July	282,840	318,496	
August	250,303	307,643	
September	254,518	300,174	
October	273,948	290,157	
November	273,362	370,203	
December	277,852	314,446	

## Median Price



Month	2023	2024	2025
January	239,900	270,750	290,000
February	270,000	245,000	290,000
March	267,500	271,950	289,500
April	262,500	262,900	
May	259,900	265,000	
June	277,500	265,000	
July	249,000	269,000	
August	239,500	265,000	
September	235,000	289,950	
October	254,500	269,900	
November	229,950	319,900	
December	255,000	290,000	



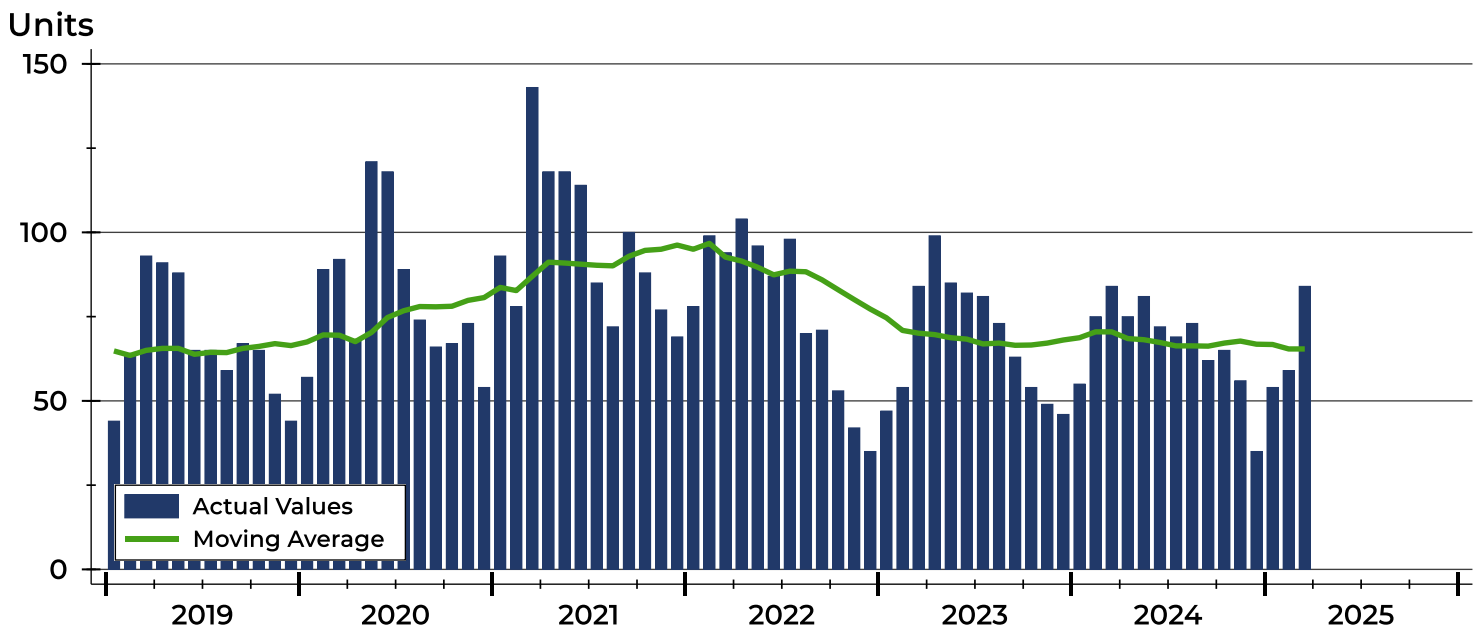
# Riley County Contracts Written Analysis

Summary Statistics for Contracts Written		2025	March 2024	Change	Year-to-Date		
		2025	2024		2025	2024	Change
Contracts Written		84	84	0.0%	197	214	-7.9%
Volume (1,000s)		25,853	23,451	10.2%	60,083	59,560	0.9%
Average	Sale Price	307,777	279,183	10.2%	304,990	278,316	9.6%
	Days on Market	18	44	-59.1%	27	39	-30.8%
	Percent of Original	99.2%	98.6%	0.6%	98.1%	98.0%	0.1%
Median	Sale Price	283,700	251,750	12.7%	279,900	265,000	5.6%
	Days on Market	6	8	-25.0%	7	10	-30.0%
	Percent of Original	100.0%	100.0%	0.0%	100.0%	98.9%	1.1%

A total of 84 contracts for sale were written in Riley County during the month of March, the same as in 2024. The median list price of these homes was \$283,700, up from \$251,750 the prior year.

Half of the homes that went under contract in March were on the market less than 6 days, compared to 8 days in March 2024.

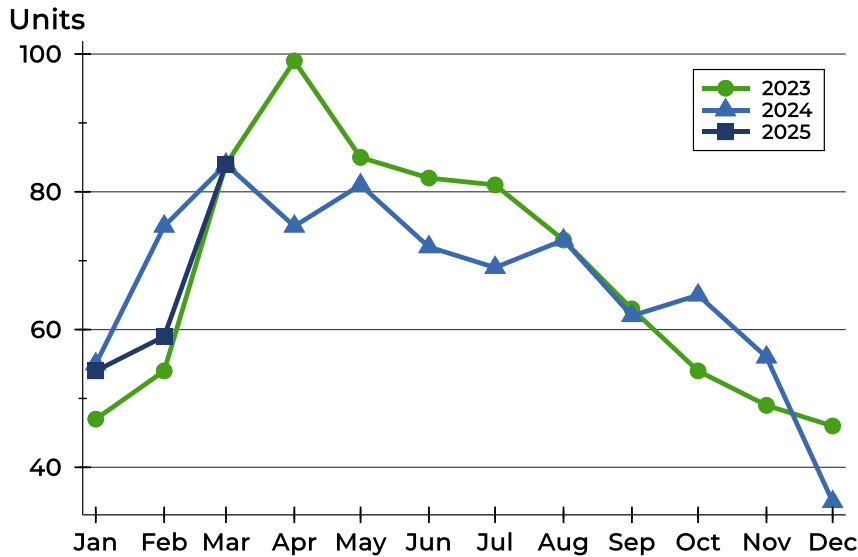
## History of Contracts Written





## Riley County Contracts Written Analysis

### Contracts Written by Month



Month	2023	2024	2025
January	47	55	<b>54</b>
February	54	75	<b>59</b>
March	84	84	<b>84</b>
April	99	75	
May	85	81	
June	82	72	
July	81	69	
August	73	73	
September	63	62	
October	54	65	
November	49	56	
December	46	35	

### Contracts Written by Price Range

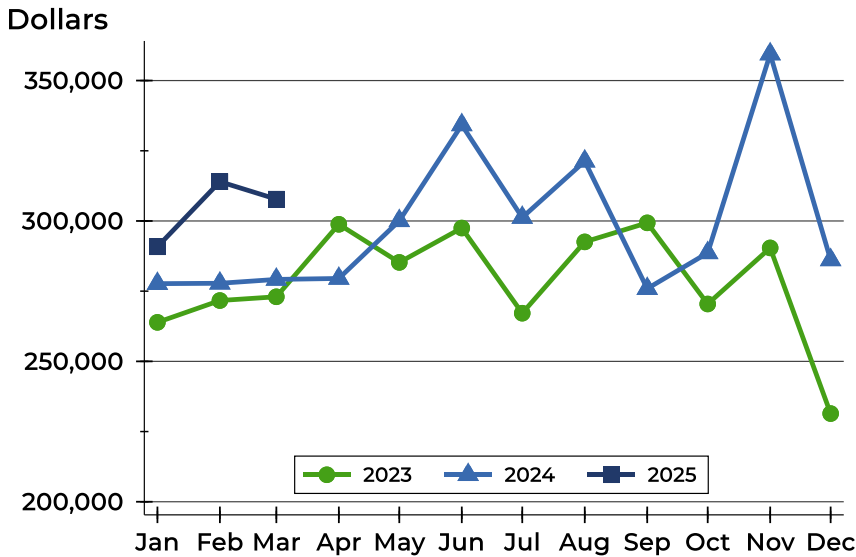
Price Range	Contracts Written		List Price		Days on Market		Price as % of Orig.	
	Number	Percent	Average	Median	Avg.	Med.	Avg.	Med.
Below \$25,000	0	0.0%	N/A	N/A	N/A	N/A	N/A	N/A
\$25,000-\$49,999	0	0.0%	N/A	N/A	N/A	N/A	N/A	N/A
\$50,000-\$99,999	0	0.0%	N/A	N/A	N/A	N/A	N/A	N/A
\$100,000-\$124,999	1	1.2%	124,900	124,900	3	3	100.0%	100.0%
\$125,000-\$149,999	3	3.6%	139,967	144,900	79	11	100.0%	100.0%
\$150,000-\$174,999	4	4.8%	154,975	155,000	14	12	99.0%	100.0%
\$175,000-\$199,999	10	11.9%	188,220	189,900	11	5	100.1%	100.0%
\$200,000-\$249,999	13	15.5%	225,777	229,000	16	4	97.9%	100.0%
\$250,000-\$299,999	19	22.6%	277,621	279,000	13	5	99.2%	100.0%
\$300,000-\$399,999	20	23.8%	351,165	359,000	23	6	99.2%	100.0%
\$400,000-\$499,999	8	9.5%	439,788	432,450	16	6	98.7%	100.0%
\$500,000-\$749,999	4	4.8%	596,250	567,500	8	6	100.0%	100.0%
\$750,000-\$999,999	2	2.4%	834,950	834,950	4	4	100.0%	100.0%
\$1,000,000 and up	0	0.0%	N/A	N/A	N/A	N/A	N/A	N/A





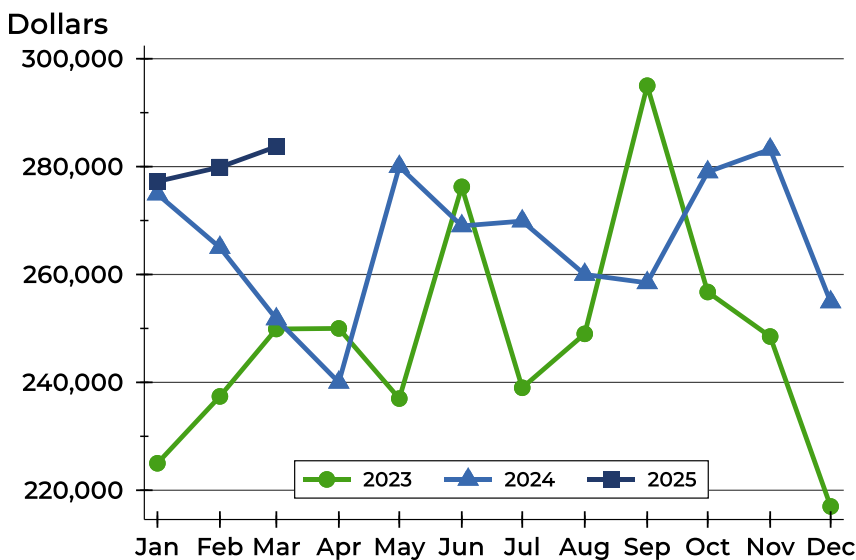
# Riley County Contracts Written Analysis

## Average Price



Month	2023	2024	2025
January	263,891	277,683	<b>290,809</b>
February	271,664	277,810	<b>313,999</b>
March	273,006	279,183	<b>307,777</b>
April	298,818	279,529	
May	285,244	300,060	
June	297,489	334,209	
July	267,157	301,232	
August	292,554	321,281	
September	299,340	275,903	
October	270,441	288,634	
November	290,402	359,444	
December	231,409	286,127	

## Median Price

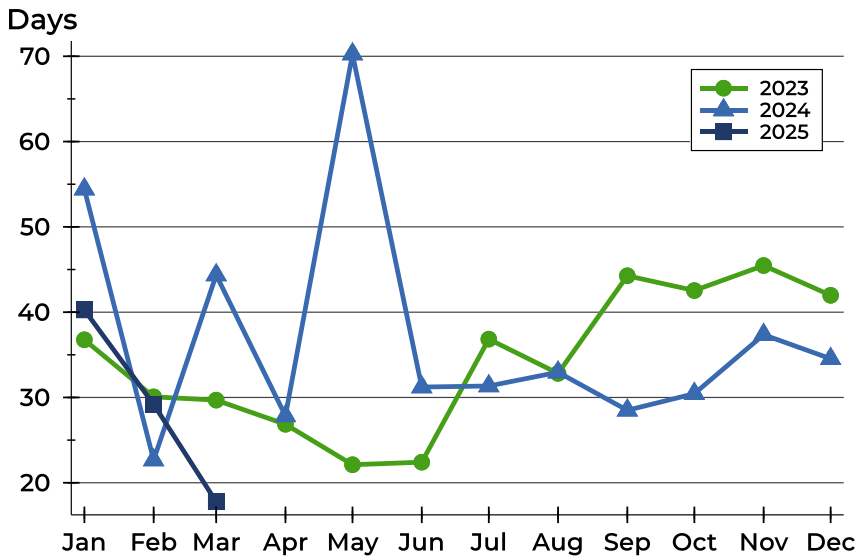


Month	2023	2024	2025
January	225,000	274,900	<b>277,250</b>
February	237,400	265,000	<b>279,900</b>
March	249,900	251,750	<b>283,700</b>
April	250,000	240,000	
May	237,000	280,000	
June	276,250	269,000	
July	239,000	269,900	
August	249,000	260,000	
September	295,000	258,450	
October	256,750	279,000	
November	248,500	283,200	
December	217,000	254,900	



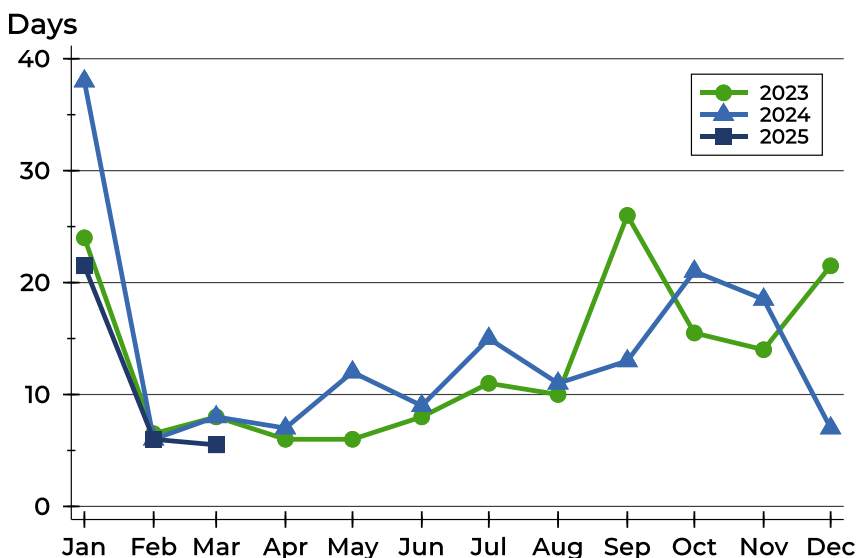
## Riley County Contracts Written Analysis

### Average DOM



Month	2023	2024	2025
January	37	54	<b>40</b>
February	30	23	<b>29</b>
March	30	44	<b>18</b>
April	27	28	
May	22	70	
June	22	31	
July	37	31	
August	33	33	
September	44	29	
October	43	30	
November	45	37	
December	42	35	

### Median DOM



Month	2023	2024	2025
January	24	38	<b>22</b>
February	7	6	<b>6</b>
March	8	8	<b>6</b>
April	6	7	
May	6	12	
June	8	9	
July	11	15	
August	10	11	
September	26	13	
October	16	21	
November	14	19	
December	22	7	



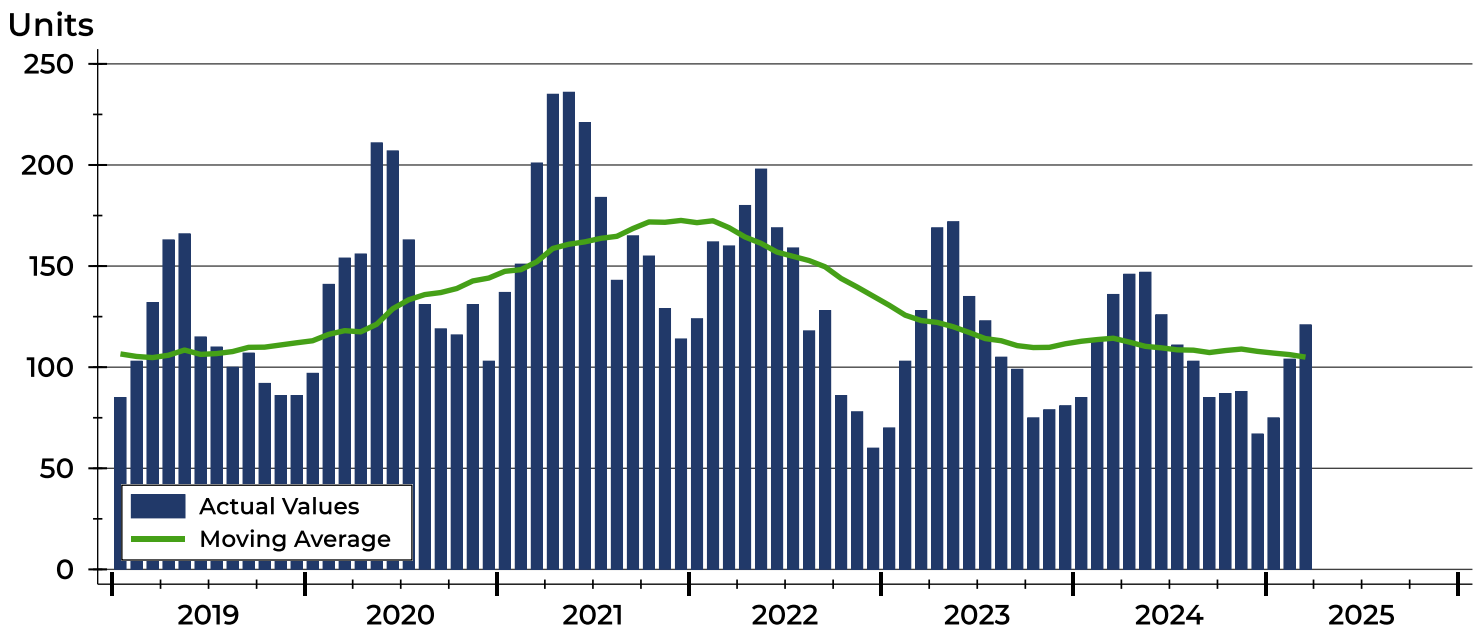
# Riley County Pending Contracts Analysis

Summary Statistics for Pending Contracts		2025	End of March 2024	Change
Pending Contracts		121	136	-11.0%
Volume (1,000s)		37,817	38,607	-2.0%
Average	List Price	312,540	283,872	10.1%
	Days on Market	26	42	-38.1%
	Percent of Original	99.3%	99.0%	0.3%
Median	List Price	287,500	255,500	12.5%
	Days on Market	6	8	-25.0%
	Percent of Original	100.0%	100.0%	0.0%

A total of 121 listings in Riley County had contracts pending at the end of March, down from 136 contracts pending at the end of March 2024.

Pending contracts reflect listings with a contract in place at the end of the month. In contrast, contracts written measures the number of listings put under contract during the month.

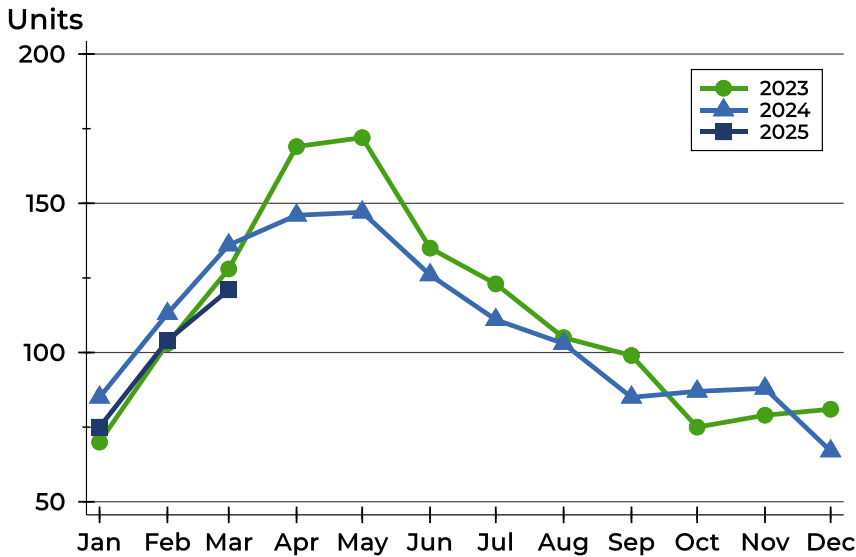
## History of Pending Contracts





## Riley County Pending Contracts Analysis

### Pending Contracts by Month



Month	2023	2024	2025
January	70	85	<b>75</b>
February	103	113	<b>104</b>
March	128	136	<b>121</b>
April	169	146	
May	172	147	
June	135	126	
July	123	111	
August	105	103	
September	99	85	
October	75	87	
November	79	88	
December	81	67	

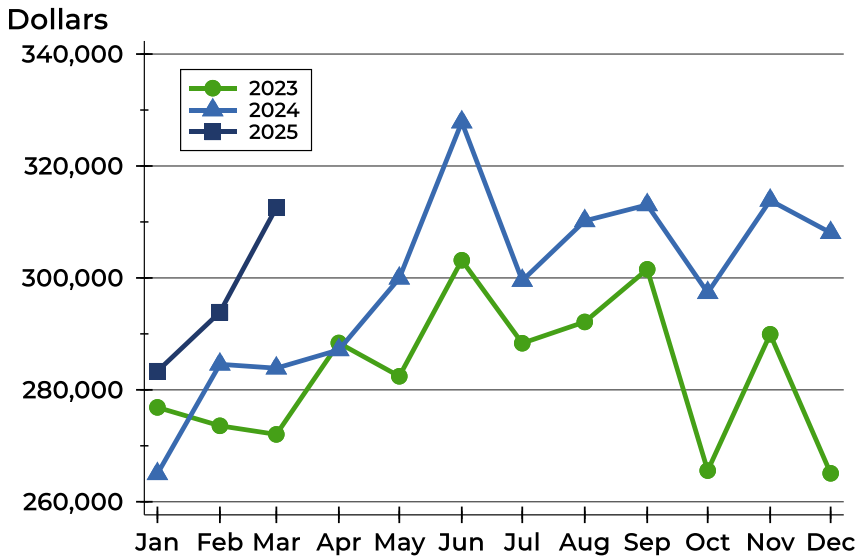
### Pending Contracts by Price Range

Price Range	Pending Contracts		List Price		Days on Market		Price as % of Orig.	
	Number	Percent	Average	Median	Avg.	Med.	Avg.	Med.
Below \$25,000	0	0.0%	N/A	N/A	N/A	N/A	N/A	N/A
\$25,000-\$49,999	0	0.0%	N/A	N/A	N/A	N/A	N/A	N/A
\$50,000-\$99,999	0	0.0%	N/A	N/A	N/A	N/A	N/A	N/A
\$100,000-\$124,999	1	0.8%	124,900	124,900	3	3	100.0%	100.0%
\$125,000-\$149,999	5	4.1%	137,920	140,000	66	11	98.7%	100.0%
\$150,000-\$174,999	5	4.1%	156,980	155,000	16	14	100.0%	100.0%
\$175,000-\$199,999	14	11.6%	188,000	189,900	38	5	99.2%	100.0%
\$200,000-\$249,999	20	16.5%	228,052	229,000	18	5	99.4%	100.0%
\$250,000-\$299,999	23	19.0%	277,122	279,000	14	4	99.2%	100.0%
\$300,000-\$399,999	28	23.1%	343,396	342,450	32	8	98.9%	100.0%
\$400,000-\$499,999	16	13.2%	454,822	450,000	20	6	99.9%	100.0%
\$500,000-\$749,999	7	5.8%	584,143	565,000	35	9	99.1%	100.0%
\$750,000-\$999,999	2	1.7%	834,950	834,950	4	4	100.0%	100.0%
\$1,000,000 and up	0	0.0%	N/A	N/A	N/A	N/A	N/A	N/A



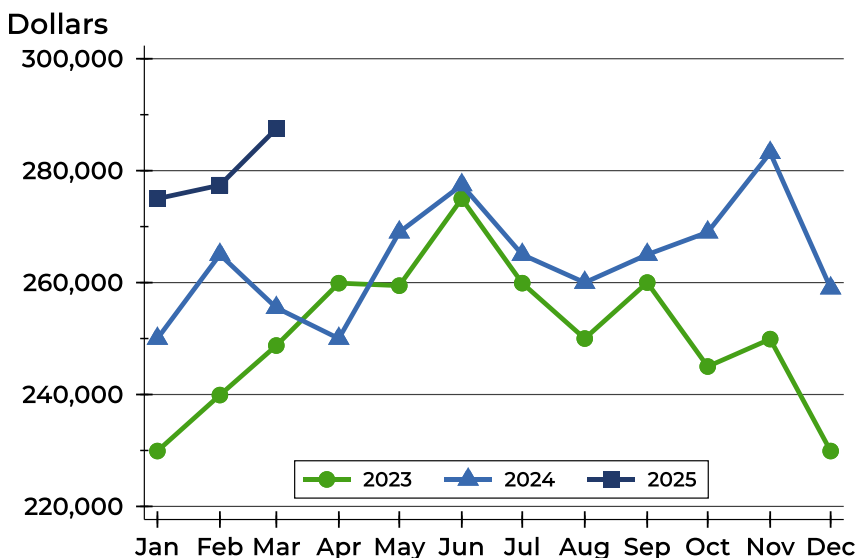
# Riley County Pending Contracts Analysis

## Average Price



Month	2023	2024	2025
January	276,864	264,992	<b>283,327</b>
February	273,576	284,565	<b>293,871</b>
March	272,038	283,872	<b>312,540</b>
April	288,375	287,141	
May	282,422	299,939	
June	303,159	327,846	
July	288,326	299,528	
August	292,135	310,197	
September	301,537	313,052	
October	265,571	297,345	
November	289,928	313,855	
December	265,080	308,070	

## Median Price

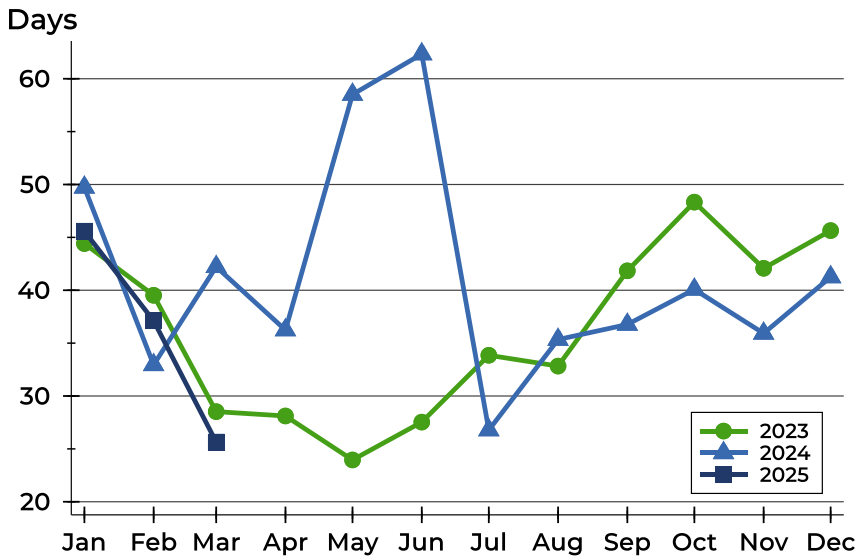


Month	2023	2024	2025
January	229,900	250,000	<b>275,000</b>
February	239,900	265,000	<b>277,400</b>
March	248,750	255,500	<b>287,500</b>
April	259,900	250,000	
May	259,450	269,000	
June	275,000	277,450	
July	259,900	265,000	
August	250,000	260,000	
September	260,000	265,000	
October	245,000	269,000	
November	249,900	283,200	
December	229,900	259,000	



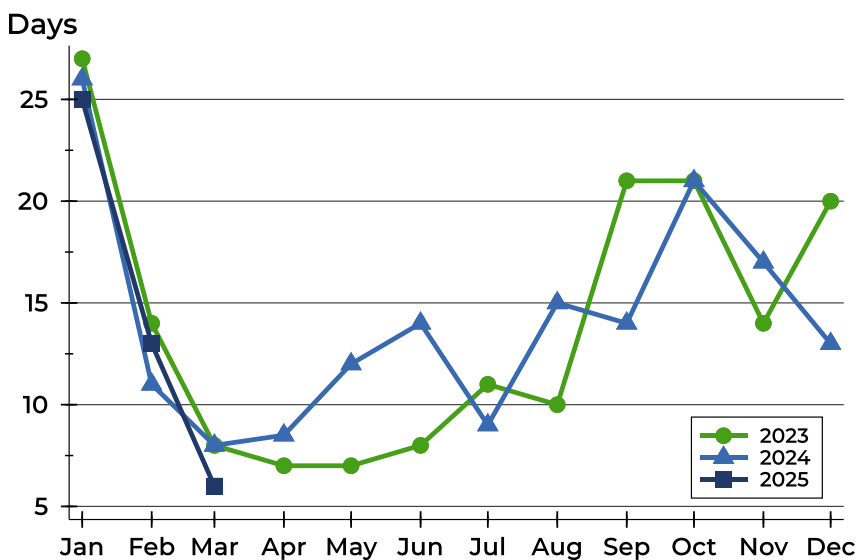
## Riley County Pending Contracts Analysis

### Average DOM



Month	2023	2024	2025
January	44	50	<b>46</b>
February	40	33	<b>37</b>
March	29	42	<b>26</b>
April	28	36	
May	24	59	
June	28	62	
July	34	27	
August	33	35	
September	42	37	
October	48	40	
November	42	36	
December	46	41	

### Median DOM



Month	2023	2024	2025
January	27	26	<b>25</b>
February	14	11	<b>13</b>
March	8	8	<b>6</b>
April	7	9	
May	7	12	
June	8	14	
July	11	9	
August	10	15	
September	21	14	
October	21	21	
November	14	17	
December	20	13	