



**March
2026**

Flint Hills MLS Statistics



**FLINT HILLS
ASSOCIATION
OF REALTORS®**

Riley County Housing Report



Market Overview

Riley County Home Sales Fell in March

Total home sales in Riley County fell last month to 58 units, compared to 67 units in March 2025. Total sales volume was \$19.5 million, up from a year earlier.

The median sale price in March was \$299,950, up from \$279,900 a year earlier. Homes that sold in March were typically on the market for 9 days and sold for 100.0% of their list prices.

Riley County Active Listings Up at End of March

The total number of active listings in Riley County at the end of March was 124 units, up from 104 at the same point in 2025. This represents a 1.9 months' supply of homes available for sale. The median list price of homes on the market at the end of March was \$321,950.

During March, a total of 105 contracts were written up from 78 in March 2025. At the end of the month, there were 139 contracts still pending.

Report Contents

- Summary Statistics – Page 2
- Closed Listing Analysis – Page 3
- Active Listings Analysis – Page 7
- Months' Supply Analysis – Page 11
- New Listings Analysis – Page 12
- Contracts Written Analysis – Page 15
- Pending Contracts Analysis – Page 19

Contact Information

Margaret Pendleton, Association Executive
 Flint Hills Association of REALTORS®
 205 S. Seth Child Road
 Manhattan, KS 66502
 785-776-1203
ae@flinthillsrealtors.net
www.flinthillsrealtors.net



**March
2026**

Flint Hills MLS Statistics



**FLINT HILLS
ASSOCIATION
OF REALTORS®**

Riley County Summary Statistics

March MLS Statistics Three-year History		Current Month			Year-to-Date		
		2026	2025	2024	2026	2025	2024
Home Sales Change from prior year	58 -13.4%	67 -4.3%	70 34.6%	147 2.8%	143 -15.4%	169 52.3%	
Active Listings Change from prior year	124 19.2%	104 28.4%	81 -2.4%	N/A	N/A	N/A	
Months' Supply Change from prior year	1.9 18.8%	1.6 45.5%	1.1 0.0%	N/A	N/A	N/A	
New Listings Change from prior year	111 -0.9%	112 23.1%	91 -9.9%	264 1.1%	261 7.4%	243 11.0%	
Contracts Written Change from prior year	105 34.6%	78 -8.2%	85 1.2%	224 17.3%	191 -11.2%	215 16.2%	
Pending Contracts Change from prior year	139 24.1%	112 -11.8%	127 6.7%	N/A	N/A	N/A	
Sales Volume (1,000s) Change from prior year	19,490 1.2%	19,264 9.7%	17,564 27.9%	45,760 8.2%	42,295 -2.4%	43,335 54.2%	
Average	Sale Price Change from prior year	336,042 16.9%	287,519 14.6%	250,910 -5.0%	311,296 5.2%	295,772 15.3%	256,418 1.3%
	List Price of Actives Change from prior year	395,922 11.1%	356,291 1.9%	349,539 -5.1%	N/A	N/A	N/A
	Days on Market Change from prior year	40 33.3%	30 -18.9%	37 -21.3%	46 43.8%	32 -27.3%	44 0.0%
	Percent of List Change from prior year	98.6% 0.5%	98.1% -1.0%	99.1% 1.6%	97.9% -0.2%	98.1% 0.4%	97.7% 0.0%
	Percent of Original Change from prior year	96.8% -0.5%	97.3% -0.9%	98.2% 3.2%	96.1% -0.9%	97.0% 0.6%	96.4% 0.6%
Median	Sale Price Change from prior year	299,950 7.2%	279,900 17.1%	239,000 3.9%	260,000 -5.1%	274,000 11.8%	245,000 10.1%
	List Price of Actives Change from prior year	321,950 1.4%	317,450 6.2%	299,000 -6.2%	N/A	N/A	N/A
	Days on Market Change from prior year	9 -10.0%	10 25.0%	8 -73.3%	24 140.0%	10 -37.5%	16 -42.9%
	Percent of List Change from prior year	100.0% 2.0%	98.0% -1.9%	99.9% 0.9%	98.8% 0.3%	98.5% 0.0%	98.5% -0.3%
	Percent of Original Change from prior year	98.5% 1.0%	97.5% -1.9%	99.4% 1.8%	98.0% 0.2%	97.8% 0.1%	97.7% 0.3%

Note: Year-to-date statistics cannot be calculated for Active Listings, Months' Supply and Pending Contracts.



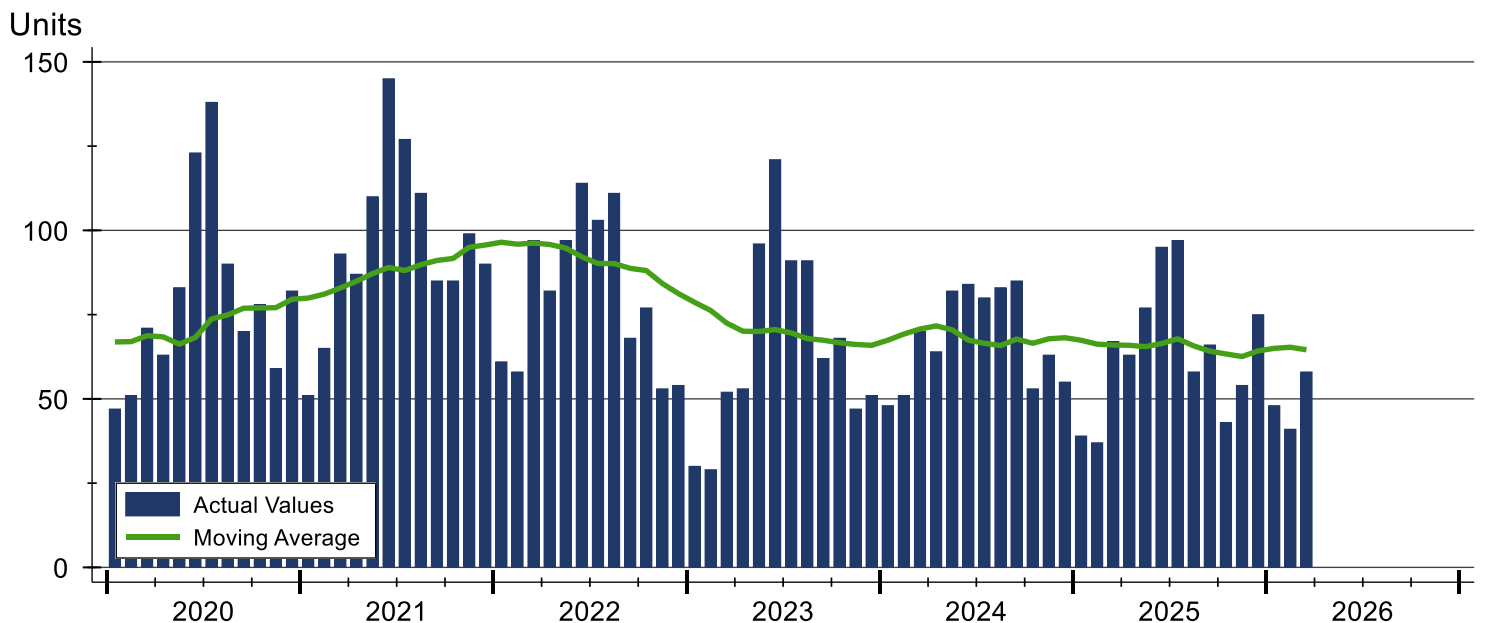
Riley County Closed Listings Analysis

Summary Statistics for Closed Listings		2026	March 2025	Change	2026	Year-to-Date 2025	Change
Closed Listings		58	67	-13.4%	147	143	2.8%
Volume (1,000s)		19,490	19,264	1.2%	45,760	42,295	8.2%
Months' Supply		1.9	1.6	18.8%	N/A	N/A	N/A
Average	Sale Price	336,042	287,519	16.9%	311,296	295,772	5.2%
	Days on Market	40	30	33.3%	46	32	43.8%
	Percent of List	98.6%	98.1%	0.5%	97.9%	98.1%	-0.2%
	Percent of Original	96.8%	97.3%	-0.5%	96.1%	97.0%	-0.9%
Median	Sale Price	299,950	279,900	7.2%	260,000	274,000	-5.1%
	Days on Market	9	10	-10.0%	24	10	140.0%
	Percent of List	100.0%	98.0%	2.0%	98.8%	98.5%	0.3%
	Percent of Original	98.5%	97.5%	1.0%	98.0%	97.8%	0.2%

A total of 58 homes sold in Riley County in March, down from 67 units in March 2025. Total sales volume rose to \$19.5 million compared to \$19.3 million in the previous year.

The median sales price in March was \$299,950, up 7.2% compared to the prior year. Median days on market was 9 days, down from 20 days in February, and down from 10 in March 2025.

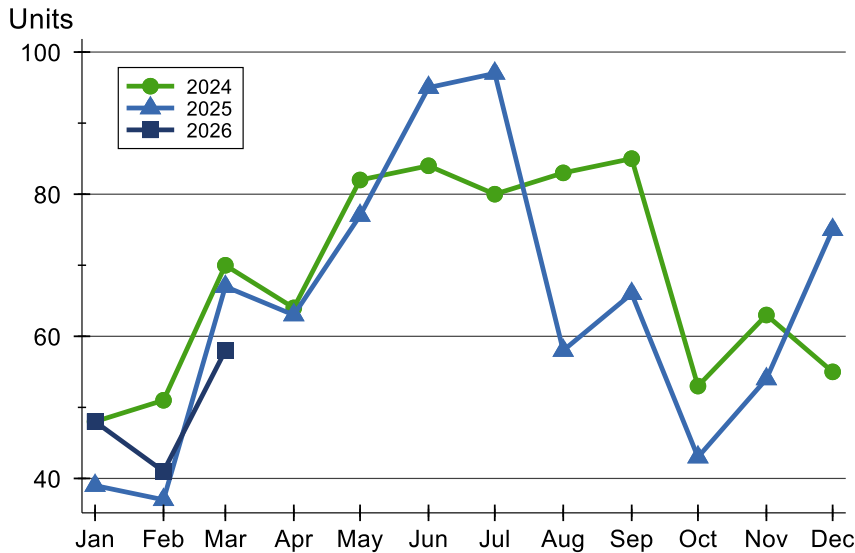
History of Closed Listings





Riley County Closed Listings Analysis

Closed Listings by Month



Month	2024	2025	2026
January	48	39	48
February	51	37	41
March	70	67	58
April	64	63	
May	82	77	
June	84	95	
July	80	97	
August	83	58	
September	85	66	
October	53	43	
November	63	54	
December	55	75	

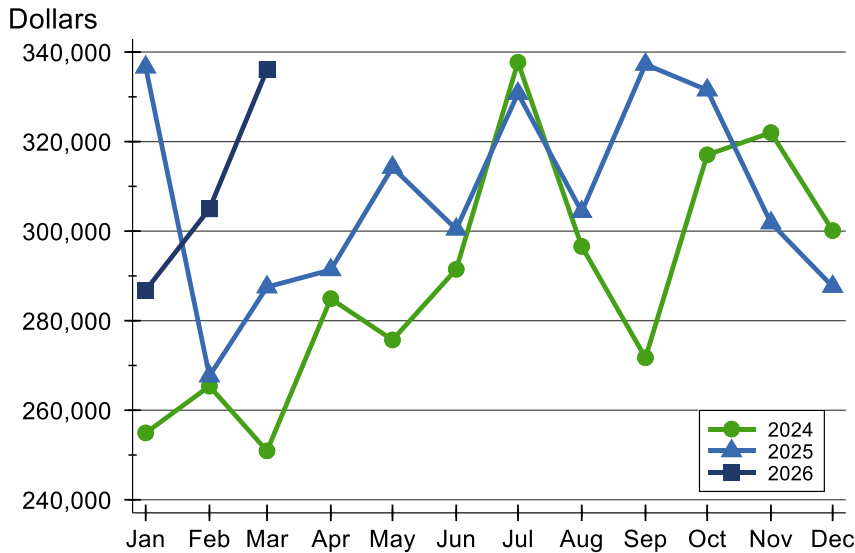
Closed Listings by Price Range

Price Range	Sales		Months' Supply	Sale Price		Days on Market		Price as % of List		Price as % of Orig.	
	Number	Percent		Average	Median	Avg.	Med.	Avg.	Med.	Avg.	Med.
Below \$25,000	0	0.0%	N/A	N/A	N/A	N/A	N/A	N/A	N/A	N/A	N/A
\$25,000-\$49,999	1	1.7%	0.0	35,000	35,000	134	134	70.0%	70.0%	50.0%	50.0%
\$50,000-\$99,999	0	0.0%	N/A	N/A	N/A	N/A	N/A	N/A	N/A	N/A	N/A
\$100,000-\$124,999	0	0.0%	N/A	N/A	N/A	N/A	N/A	N/A	N/A	N/A	N/A
\$125,000-\$149,999	1	1.7%	2.1	126,000	126,000	6	6	97.0%	97.0%	97.0%	97.0%
\$150,000-\$174,999	6	10.3%	1.4	162,833	166,500	11	7	99.7%	100.0%	97.9%	98.6%
\$175,000-\$199,999	4	6.9%	1.5	184,625	183,000	50	49	96.7%	96.8%	92.2%	92.0%
\$200,000-\$249,999	8	13.8%	1.3	221,586	221,245	66	80	99.6%	100.2%	97.6%	98.8%
\$250,000-\$299,999	9	15.5%	1.3	268,267	265,000	12	2	100.5%	100.0%	100.5%	100.0%
\$300,000-\$399,999	13	22.4%	2.1	337,467	340,000	46	26	99.0%	98.6%	98.4%	98.5%
\$400,000-\$499,999	7	12.1%	1.8	454,586	455,600	67	22	99.2%	99.0%	95.8%	97.7%
\$500,000-\$749,999	7	12.1%	3.8	576,823	574,500	28	1	98.8%	100.0%	97.9%	100.0%
\$750,000-\$999,999	1	1.7%	4.6	799,900	799,900	5	5	100.0%	100.0%	100.0%	100.0%
\$1,000,000 and up	1	1.7%	30.0	1,020,000	1,020,000	32	32	92.7%	92.7%	92.7%	92.7%



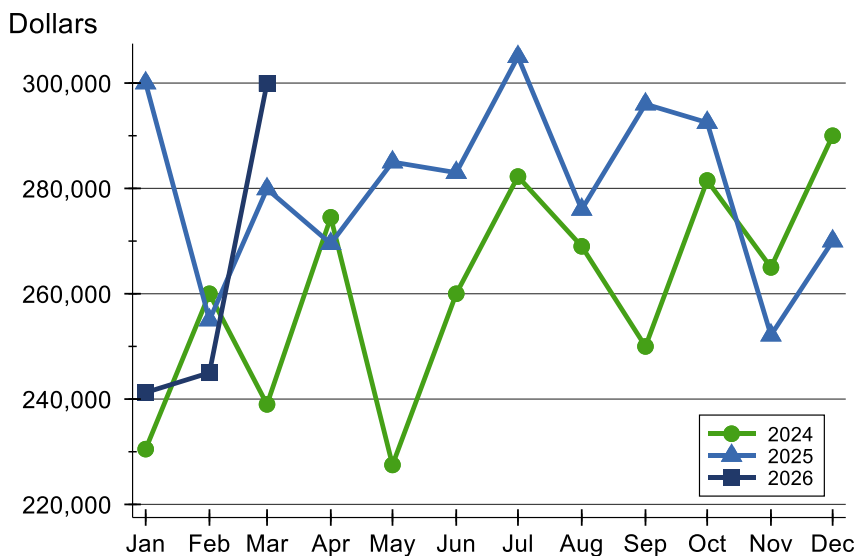
Riley County Closed Listings Analysis

Average Price



Month	2024	2025	2026
January	254,923	336,632	286,795
February	265,385	267,646	304,973
March	250,910	287,519	336,042
April	284,918	291,352	
May	275,698	314,238	
June	291,474	300,422	
July	337,739	330,751	
August	296,589	304,343	
September	271,717	337,256	
October	317,039	331,516	
November	322,011	301,823	
December	300,116	287,633	

Median Price

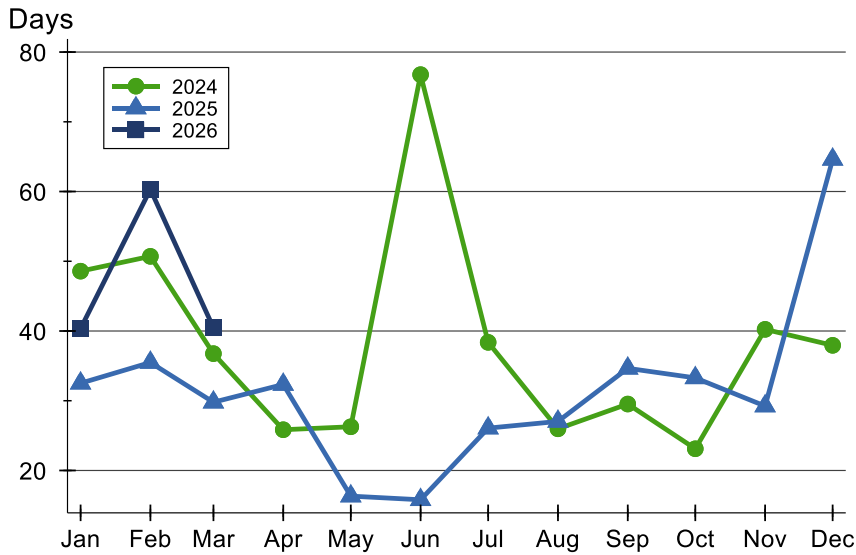


Month	2024	2025	2026
January	230,500	300,000	241,250
February	260,000	255,000	245,000
March	239,000	279,900	299,950
April	274,500	269,500	
May	227,500	285,000	
June	260,000	283,000	
July	282,250	305,000	
August	269,000	276,000	
September	250,000	296,000	
October	281,500	292,500	
November	265,000	252,125	
December	290,000	270,000	



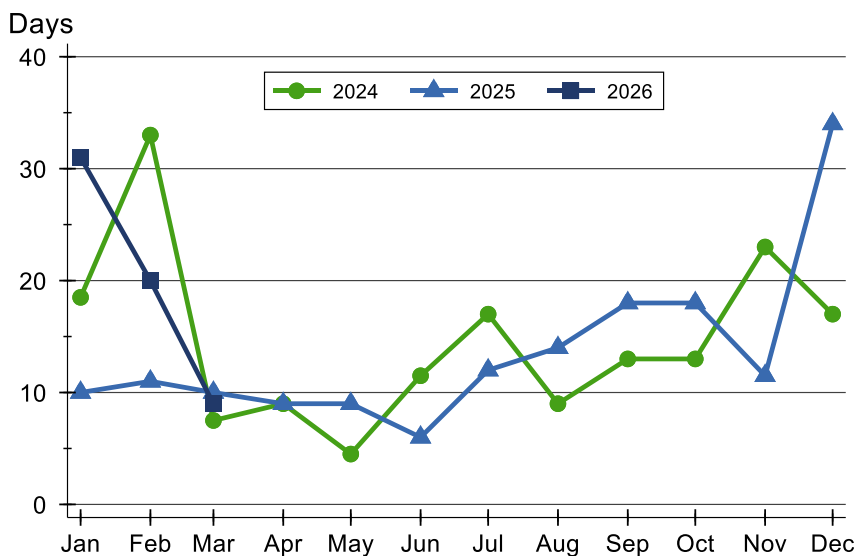
Riley County Closed Listings Analysis

Average DOM



Month	2024	2025	2026
January	49	33	40
February	51	35	60
March	37	30	40
April	26	32	
May	26	16	
June	77	16	
July	38	26	
August	26	27	
September	30	35	
October	23	33	
November	40	29	
December	38	65	

Median DOM



Month	2024	2025	2026
January	19	10	31
February	33	11	20
March	8	10	9
April	9	9	
May	5	9	
June	12	6	
July	17	12	
August	9	14	
September	13	18	
October	13	18	
November	23	12	
December	17	34	



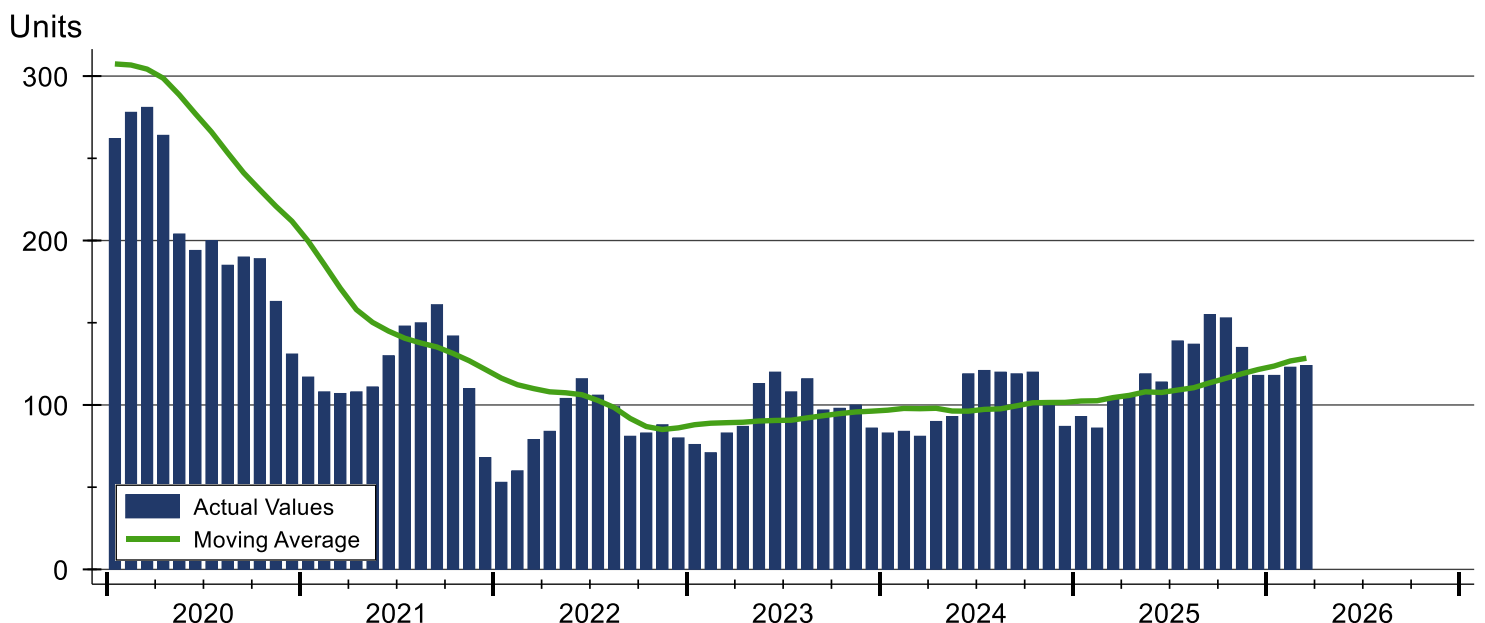
Riley County Active Listings Analysis

Summary Statistics for Active Listings		2026	End of March 2025	Change
Active Listings		124	104	19.2%
Volume (1,000s)		49,094	37,054	32.5%
Months' Supply		1.9	1.6	18.8%
Average	List Price	395,922	356,291	11.1%
	Days on Market	62	68	-8.8%
	Percent of Original	97.9%	99.8%	-1.9%
Median	List Price	321,950	317,450	1.4%
	Days on Market	27	32	-15.6%
	Percent of Original	100.0%	100.0%	0.0%

A total of 124 homes were available for sale in Riley County at the end of March. This represents a 1.9 months' supply of active listings.

The median list price of homes on the market at the end of March was \$321,950, up 1.4% from 2025. The typical time on market for active listings was 27 days, down from 32 days a year earlier.

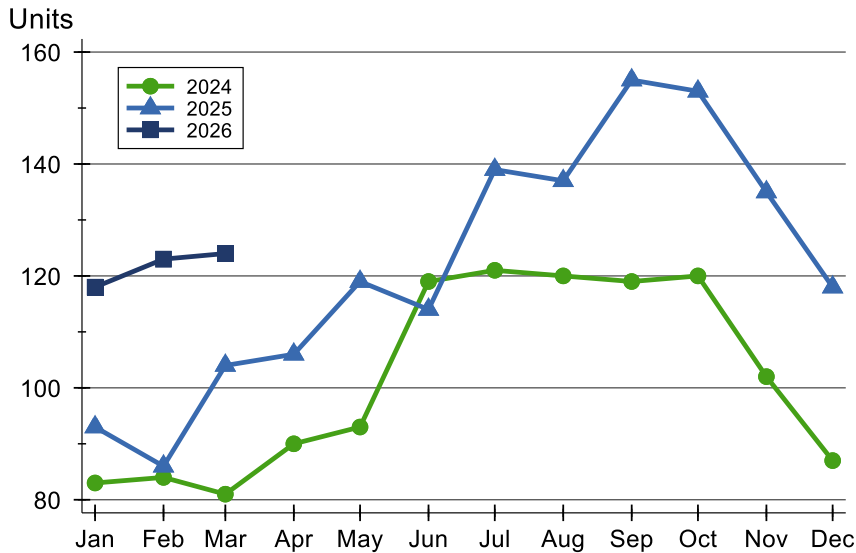
History of Active Listings





Riley County Active Listings Analysis

Active Listings by Month



Month	2024	2025	2026
January	83	93	118
February	84	86	123
March	81	104	124
April	90	106	
May	93	119	
June	119	114	
July	121	139	
August	120	137	
September	119	155	
October	120	153	
November	102	135	
December	87	118	

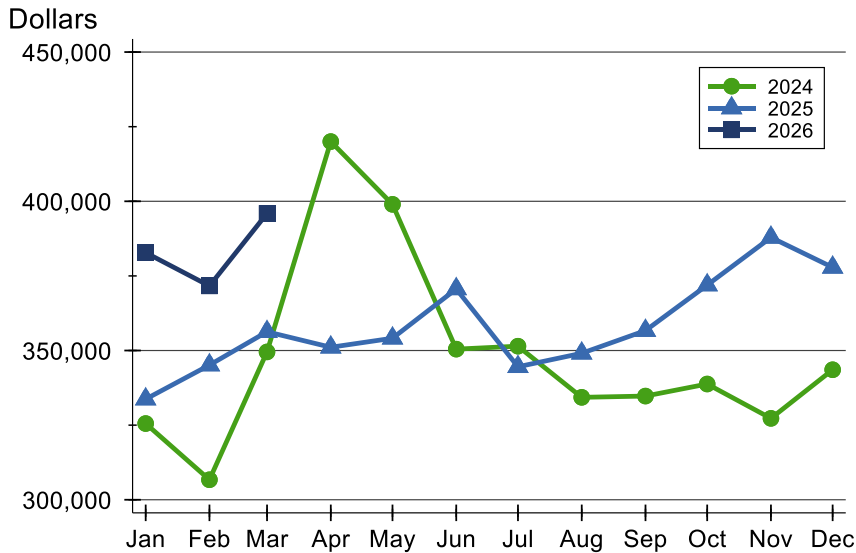
Active Listings by Price Range

Price Range	Active Listings		Months' Supply	List Price		Days on Market		Price as % of Orig.	
	Number	Percent		Average	Median	Avg.	Med.	Avg.	Med.
Below \$25,000	0	0.0%	N/A	N/A	N/A	N/A	N/A	N/A	N/A
\$25,000-\$49,999	0	0.0%	0.0	N/A	N/A	N/A	N/A	N/A	N/A
\$50,000-\$99,999	3	2.4%	N/A	76,633	80,000	184	9	88.9%	100.0%
\$100,000-\$124,999	0	0.0%	N/A	N/A	N/A	N/A	N/A	N/A	N/A
\$125,000-\$149,999	5	4.0%	2.1	135,100	135,000	86	64	97.2%	100.0%
\$150,000-\$174,999	4	3.2%	1.4	164,725	164,500	145	135	95.1%	94.3%
\$175,000-\$199,999	8	6.5%	1.5	189,125	188,000	28	20	99.7%	100.0%
\$200,000-\$249,999	18	14.5%	1.3	230,961	232,000	87	55	97.3%	97.7%
\$250,000-\$299,999	15	12.1%	1.3	270,533	265,000	41	14	99.2%	100.0%
\$300,000-\$399,999	33	26.6%	2.1	346,433	340,000	55	33	98.5%	100.0%
\$400,000-\$499,999	11	8.9%	1.8	449,676	443,640	55	8	98.2%	100.0%
\$500,000-\$749,999	17	13.7%	3.8	586,218	575,000	28	5	98.4%	100.0%
\$750,000-\$999,999	5	4.0%	4.6	805,960	785,000	32	29	100.0%	100.0%
\$1,000,000 and up	5	4.0%	30.0	1,485,500	1,340,000	115	114	94.5%	100.0%



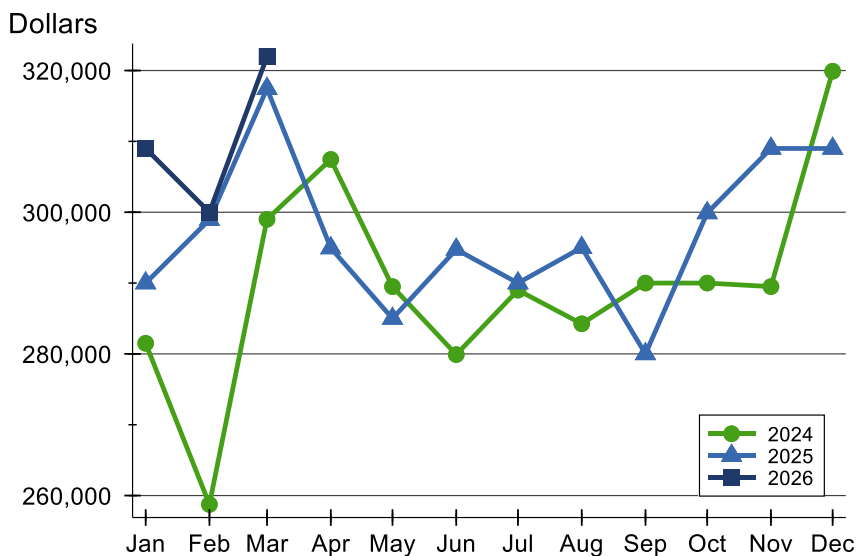
Riley County Active Listings Analysis

Average Price



Month	2024	2025	2026
January	325,539	333,718	382,794
February	306,707	345,129	371,650
March	349,539	356,291	395,922
April	420,008	351,101	
May	398,985	354,121	
June	350,472	370,639	
July	351,462	344,562	
August	334,321	349,083	
September	334,743	356,682	
October	338,785	371,935	
November	327,275	387,895	
December	343,563	377,858	

Median Price

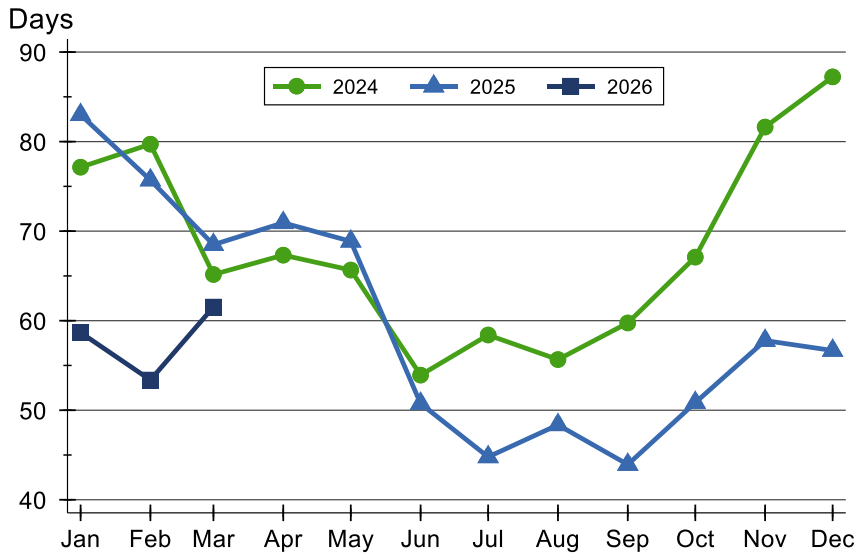


Month	2024	2025	2026
January	281,500	290,000	309,000
February	258,750	298,950	300,000
March	299,000	317,450	321,950
April	307,450	294,950	
May	289,500	285,000	
June	279,900	294,750	
July	289,000	290,000	
August	284,250	295,000	
September	290,000	280,000	
October	290,000	299,900	
November	289,500	309,000	
December	319,900	309,000	



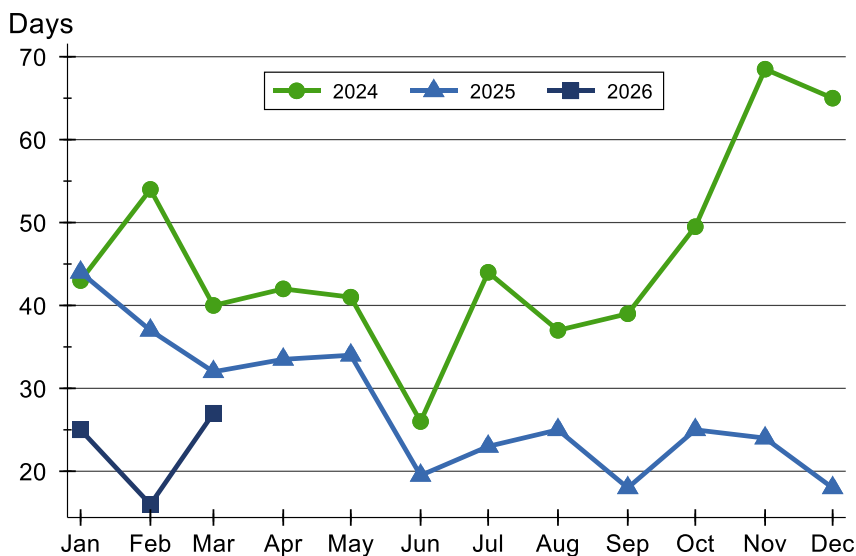
Riley County Active Listings Analysis

Average DOM



Month	2024	2025	2026
January	77	83	59
February	80	76	53
March	65	68	62
April	67	71	
May	66	69	
June	54	51	
July	58	45	
August	56	48	
September	60	44	
October	67	51	
November	82	58	
December	87	57	

Median DOM

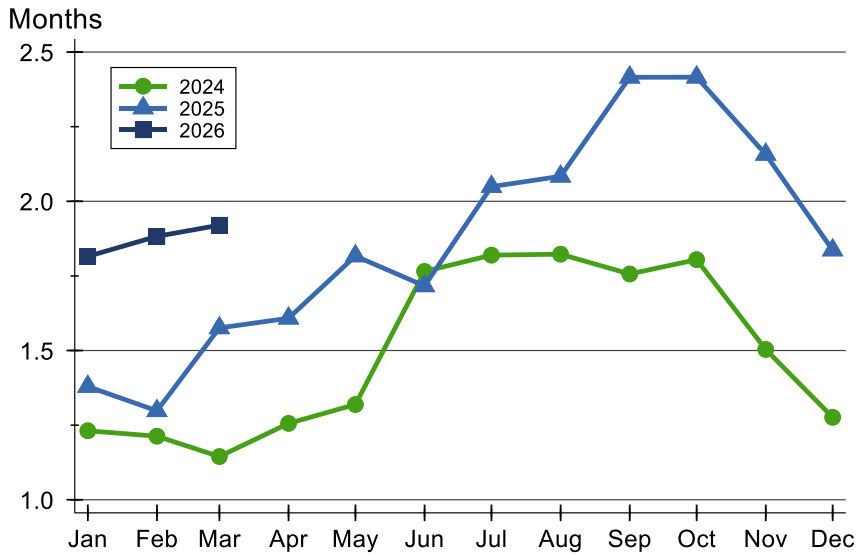


Month	2024	2025	2026
January	43	44	25
February	54	37	16
March	40	32	27
April	42	34	
May	41	34	
June	26	20	
July	44	23	
August	37	25	
September	39	18	
October	50	25	
November	69	24	
December	65	18	



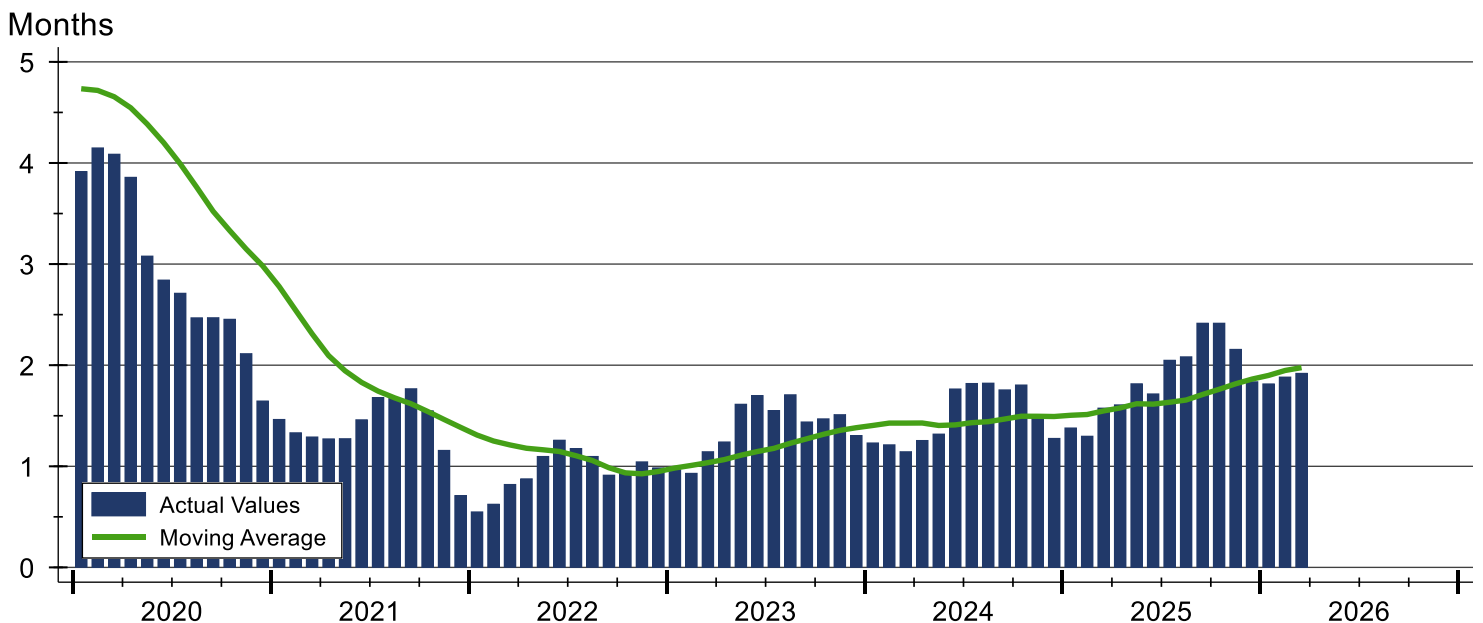
Riley County Months' Supply Analysis

Months' Supply by Month



Month	2024	2025	2026
January	1.2	1.4	1.8
February	1.2	1.3	1.9
March	1.1	1.6	1.9
April	1.3	1.6	
May	1.3	1.8	
June	1.8	1.7	
July	1.8	2.0	
August	1.8	2.1	
September	1.8	2.4	
October	1.8	2.4	
November	1.5	2.2	
December	1.3	1.8	

History of Month's Supply





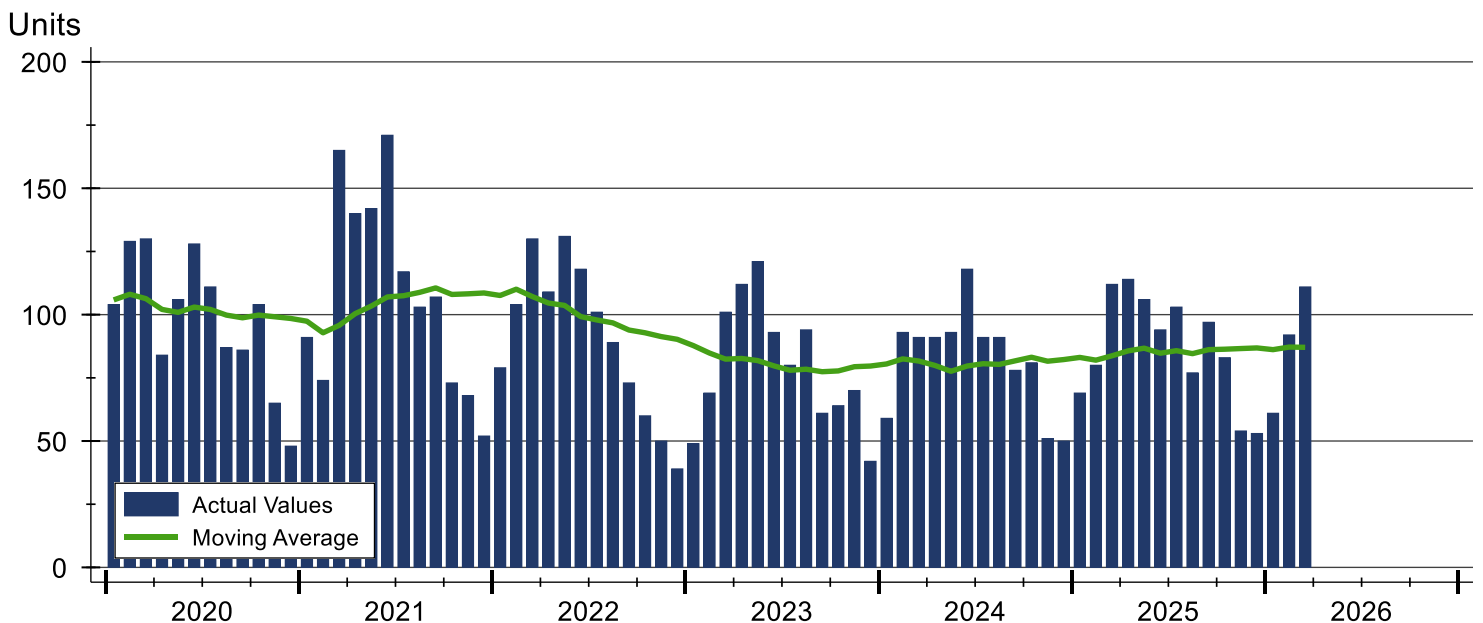
Riley County New Listings Analysis

Summary Statistics for New Listings		2026	March 2025	Change
Current Month	New Listings	111	112	-0.9%
	Volume (1,000s)	39,336	36,721	7.1%
	Average List Price	354,374	327,867	8.1%
	Median List Price	310,000	289,500	7.1%
Year-to-Date	New Listings	264	261	1.1%
	Volume (1,000s)	87,833	84,308	4.2%
	Average List Price	332,699	323,020	3.0%
	Median List Price	290,000	289,900	0.0%

A total of 111 new listings were added in Riley County during March, down 0.9% from the same month in 2025. Year-to-date Riley County has seen 264 new listings.

The median list price of these homes was \$310,000 up from \$289,500 in 2025.

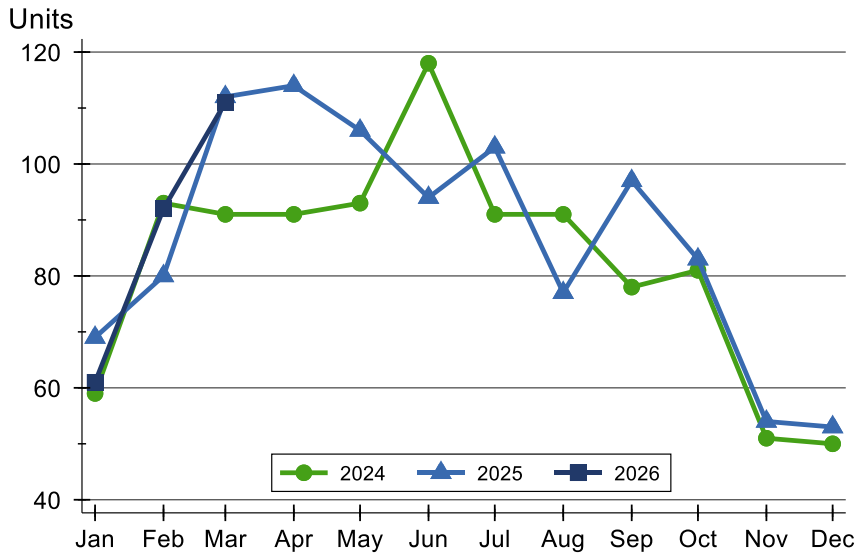
History of New Listings





Riley County New Listings Analysis

New Listings by Month



Month	2024	2025	2026
January	59	69	61
February	93	80	92
March	91	112	111
April	91	114	91
May	93	106	93
June	118	94	118
July	91	103	91
August	91	77	91
September	78	97	78
October	81	83	81
November	51	54	51
December	50	53	50

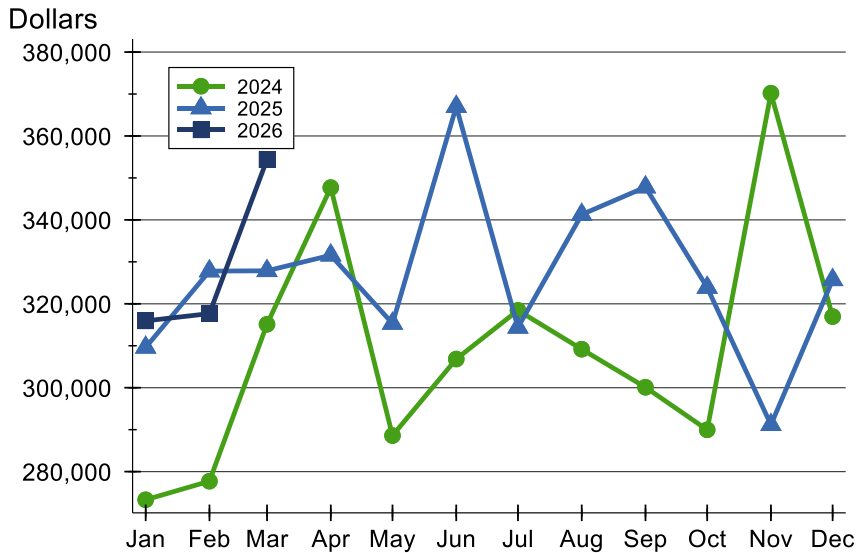
New Listings by Price Range

Price Range	New Listings		List Price		Days on Market		Price as % of Orig.	
	Number	Percent	Average	Median	Avg.	Med.	Avg.	Med.
Below \$25,000	0	0.0%	N/A	N/A	N/A	N/A	N/A	N/A
\$25,000-\$49,999	0	0.0%	N/A	N/A	N/A	N/A	N/A	N/A
\$50,000-\$99,999	0	0.0%	N/A	N/A	N/A	N/A	N/A	N/A
\$100,000-\$124,999	0	0.0%	N/A	N/A	N/A	N/A	N/A	N/A
\$125,000-\$149,999	3	2.7%	136,833	140,000	11	10	100.0%	100.0%
\$150,000-\$174,999	5	4.5%	168,580	169,900	3	2	100.0%	100.0%
\$175,000-\$199,999	8	7.2%	191,750	195,500	8	6	99.4%	100.0%
\$200,000-\$249,999	18	16.2%	223,300	219,500	7	4	99.7%	100.0%
\$250,000-\$299,999	17	15.3%	271,818	267,500	10	7	99.2%	100.0%
\$300,000-\$399,999	34	30.6%	336,129	337,000	8	5	99.2%	100.0%
\$400,000-\$499,999	8	7.2%	459,363	455,500	9	7	99.7%	100.0%
\$500,000-\$749,999	16	14.4%	615,906	625,000	9	6	99.5%	100.0%
\$750,000-\$999,999	0	0.0%	N/A	N/A	N/A	N/A	N/A	N/A
\$1,000,000 and up	2	1.8%	1,475,000	1,475,000	7	7	100.0%	100.0%



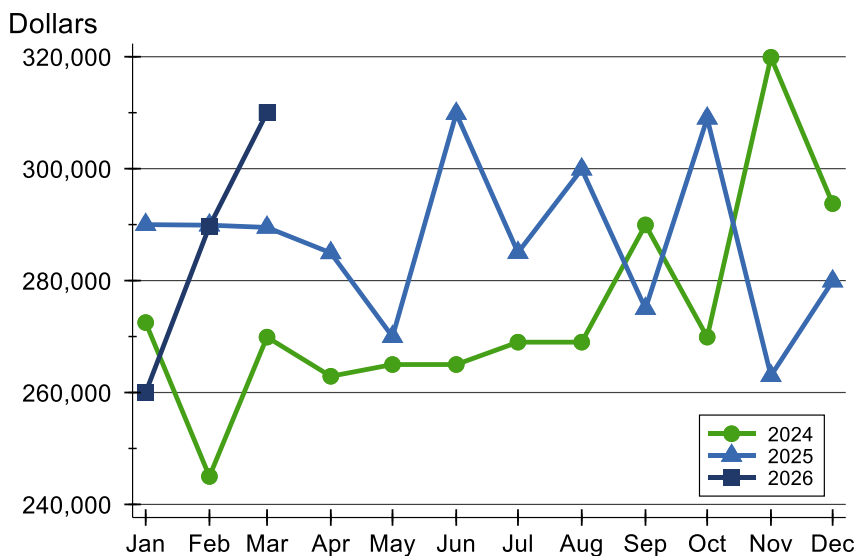
Riley County New Listings Analysis

Average Price



Month	2024	2025	2026
January	273,293	309,613	315,933
February	277,719	327,799	317,665
March	315,120	327,867	354,374
April	347,701	331,575	
May	288,602	315,310	
June	306,834	367,005	
July	318,441	314,372	
August	309,185	341,273	
September	300,110	347,807	
October	289,969	323,882	
November	370,203	291,170	
December	316,955	325,706	

Median Price



Month	2024	2025	2026
January	272,500	290,000	260,000
February	245,000	289,900	289,700
March	269,900	289,500	310,000
April	262,900	284,950	
May	265,000	269,975	
June	265,000	309,845	
July	269,000	285,000	
August	269,000	299,900	
September	289,950	275,000	
October	269,900	309,000	
November	319,900	263,000	
December	293,750	279,900	



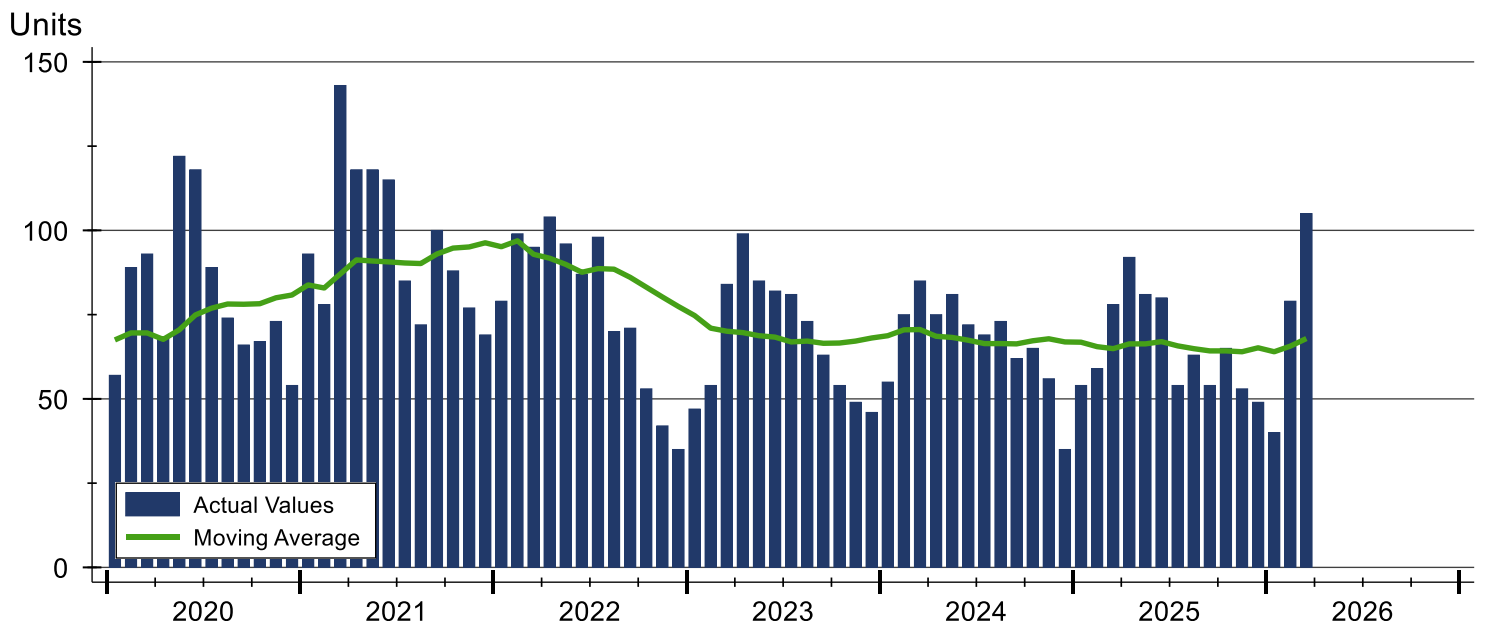
Riley County Contracts Written Analysis

Summary Statistics for Contracts Written		2026	March 2025	Change	2026	Year-to-Date 2025	Change
Contracts Written		105	78	34.6%	224	191	17.3%
Volume (1,000s)		34,196	24,334	40.5%	72,252	58,564	23.4%
Average	Sale Price	325,676	311,974	4.4%	322,552	306,616	5.2%
	Days on Market	24	18	33.3%	36	28	28.6%
	Percent of Original	98.9%	98.9%	0.0%	97.8%	97.9%	-0.1%
Median	Sale Price	300,000	283,700	5.7%	275,000	279,900	-1.8%
	Days on Market	6	6	0.0%	9	7	28.6%
	Percent of Original	100.0%	100.0%	0.0%	100.0%	99.4%	0.6%

A total of 105 contracts for sale were written in Riley County during the month of March, up from 78 in 2025. The median list price of these homes was \$300,000, up from \$283,700 the prior year.

Half of the homes that went under contract in March were on the market less than 6 days, compared to 6 days in March 2025.

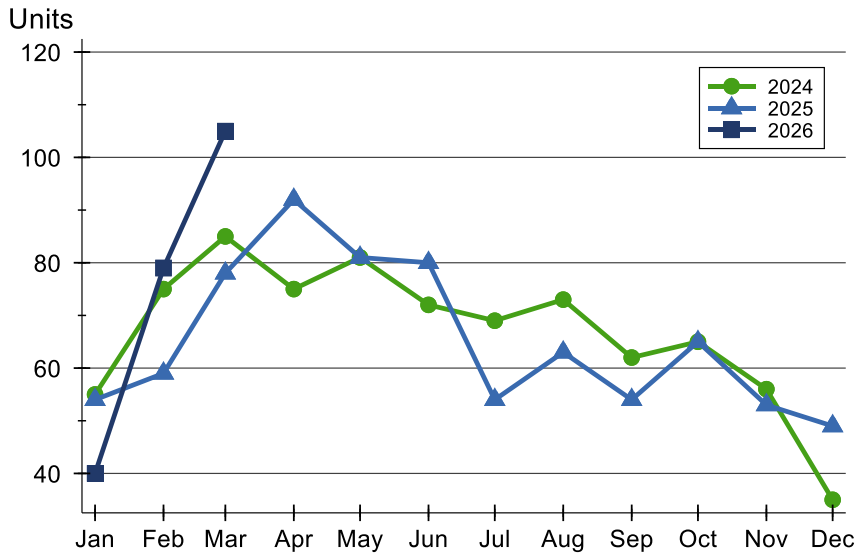
History of Contracts Written





Riley County Contracts Written Analysis

Contracts Written by Month



Month	2024	2025	2026
January	55	54	40
February	75	59	79
March	85	78	105
April	75	92	
May	81	81	
June	72	80	
July	69	54	
August	73	63	
September	62	54	
October	65	65	
November	56	53	
December	35	49	

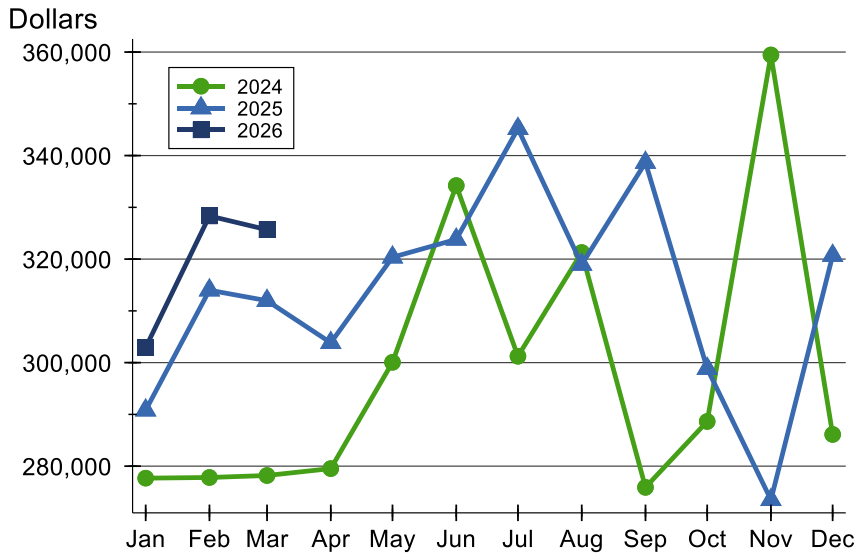
Contracts Written by Price Range

Price Range	Contracts Written		List Price		Days on Market		Price as % of Orig.	
	Number	Percent	Average	Median	Avg.	Med.	Avg.	Med.
Below \$25,000	0	0.0%	N/A	N/A	N/A	N/A	N/A	N/A
\$25,000-\$49,999	0	0.0%	N/A	N/A	N/A	N/A	N/A	N/A
\$50,000-\$99,999	0	0.0%	N/A	N/A	N/A	N/A	N/A	N/A
\$100,000-\$124,999	0	0.0%	N/A	N/A	N/A	N/A	N/A	N/A
\$125,000-\$149,999	4	3.8%	130,000	127,500	14	14	100.0%	100.0%
\$150,000-\$174,999	7	6.7%	166,829	169,900	21	4	99.6%	100.0%
\$175,000-\$199,999	6	5.7%	190,870	192,450	54	7	98.2%	100.0%
\$200,000-\$249,999	22	21.0%	223,600	222,450	21	5	99.0%	100.0%
\$250,000-\$299,999	13	12.4%	272,262	265,000	12	6	99.8%	100.0%
\$300,000-\$399,999	33	31.4%	334,894	335,000	22	5	98.5%	100.0%
\$400,000-\$499,999	10	9.5%	452,180	450,000	28	11	99.6%	100.0%
\$500,000-\$749,999	9	8.6%	593,733	555,900	19	11	98.7%	100.0%
\$750,000-\$999,999	0	0.0%	N/A	N/A	N/A	N/A	N/A	N/A
\$1,000,000 and up	1	1.0%	1,987,500	1,987,500	192	192	90.4%	90.4%



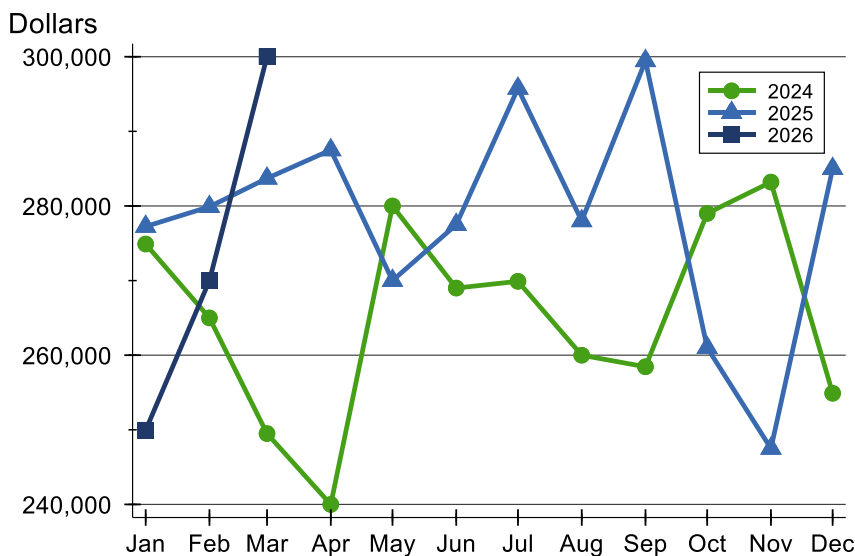
Riley County Contracts Written Analysis

Average Price



Month	2024	2025	2026
January	277,683	290,809	302,921
February	277,810	313,999	328,339
March	278,193	311,974	325,676
April	279,529	303,837	
May	300,060	320,365	
June	334,209	323,813	
July	301,232	345,201	
August	321,281	318,963	
September	275,903	338,651	
October	288,634	298,857	
November	359,444	273,506	
December	286,127	320,681	

Median Price

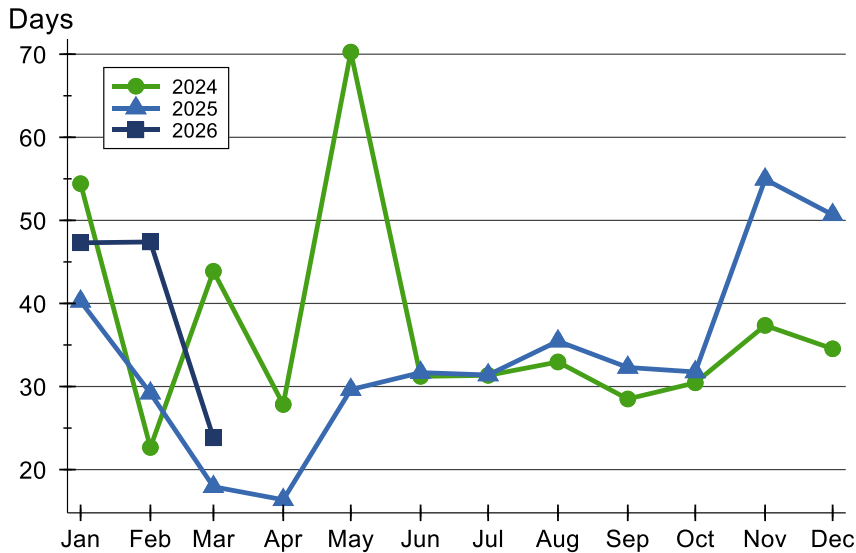


Month	2024	2025	2026
January	274,900	277,250	249,950
February	265,000	279,900	270,000
March	249,500	283,700	300,000
April	240,000	287,500	
May	280,000	270,000	
June	269,000	277,500	
July	269,900	295,750	
August	260,000	278,000	
September	258,450	299,450	
October	279,000	261,000	
November	283,200	247,500	
December	254,900	285,000	



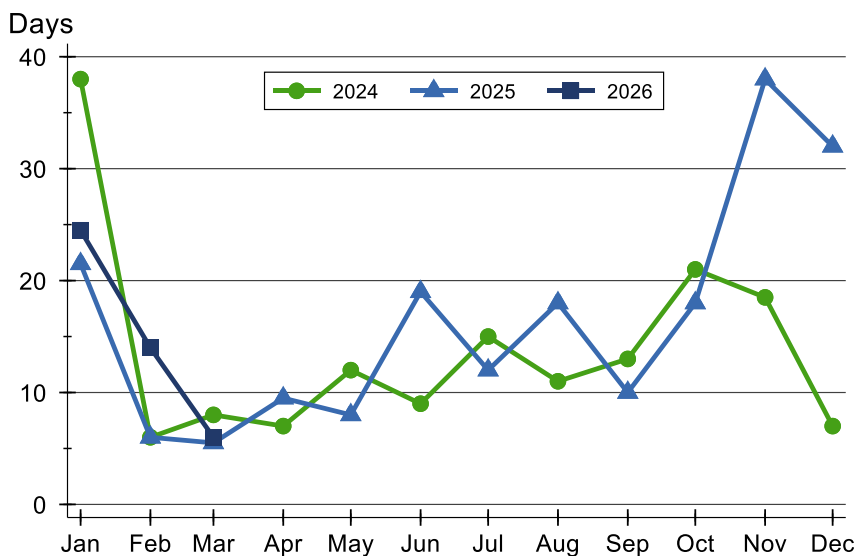
Riley County Contracts Written Analysis

Average DOM



Month	2024	2025	2026
January	54	40	47
February	23	29	47
March	44	18	24
April	28	16	
May	70	30	
June	31	32	
July	31	31	
August	33	35	
September	29	32	
October	30	32	
November	37	55	
December	35	51	

Median DOM



Month	2024	2025	2026
January	38	22	25
February	6	6	14
March	8	6	6
April	7	10	
May	12	8	
June	9	19	
July	15	12	
August	11	18	
September	13	10	
October	21	18	
November	19	38	
December	7	32	



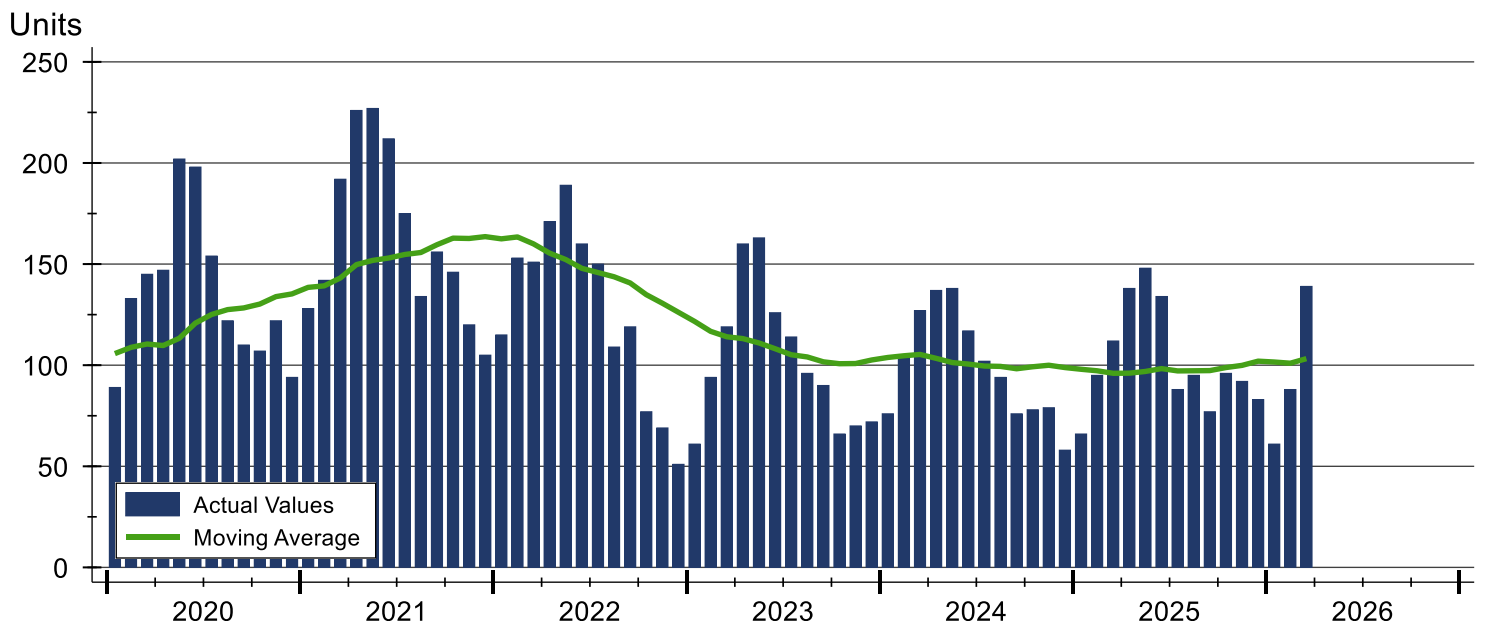
Riley County Pending Contracts Analysis

Summary Statistics for Pending Contracts		2026	End of March 2025	Change
Pending Contracts		139	112	24.1%
Volume (1,000s)		43,866	35,466	23.7%
Average	List Price	315,581	316,662	-0.3%
	Days on Market	29	24	20.8%
	Percent of Original	99.2%	99.4%	-0.2%
Median	List Price	275,000	292,350	-5.9%
	Days on Market	7	6	16.7%
	Percent of Original	100.0%	100.0%	0.0%

A total of 139 listings in Riley County had contracts pending at the end of March, up from 112 contracts pending at the end of March 2025.

Pending contracts reflect listings with a contract in place at the end of the month. In contrast, contracts written measures the number of listings put under contract during the month.

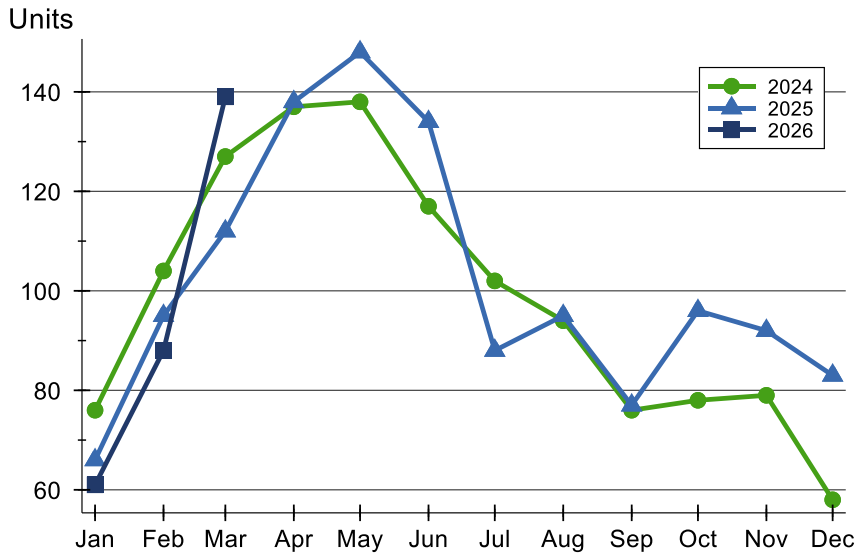
History of Pending Contracts





Riley County Pending Contracts Analysis

Pending Contracts by Month



Month	2024	2025	2026
January	76	66	61
February	104	95	88
March	127	112	139
April	137	138	
May	138	148	
June	117	134	
July	102	88	
August	94	95	
September	76	77	
October	78	96	
November	79	92	
December	58	83	

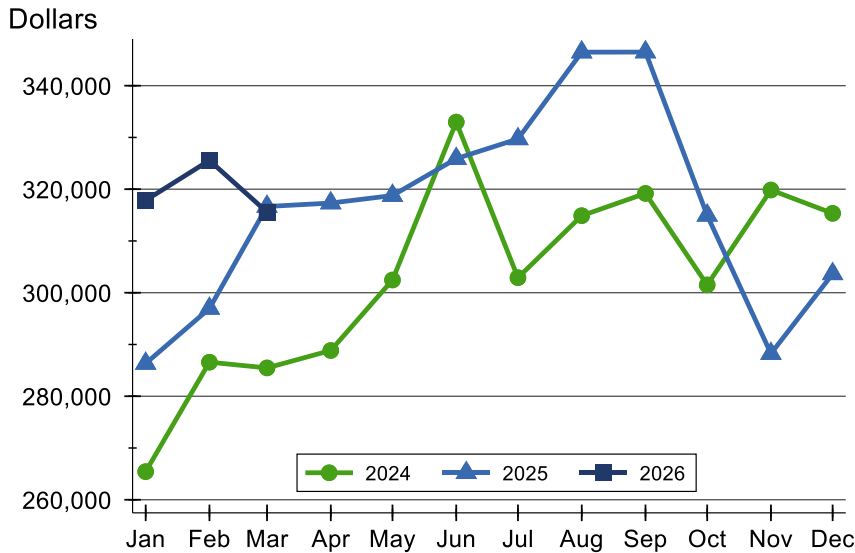
Pending Contracts by Price Range

Price Range	Pending Contracts		List Price		Days on Market		Price as % of Orig.	
	Number	Percent	Average	Median	Avg.	Med.	Avg.	Med.
Below \$25,000	0	0.0%	N/A	N/A	N/A	N/A	N/A	N/A
\$25,000-\$49,999	0	0.0%	N/A	N/A	N/A	N/A	N/A	N/A
\$50,000-\$99,999	0	0.0%	N/A	N/A	N/A	N/A	N/A	N/A
\$100,000-\$124,999	0	0.0%	N/A	N/A	N/A	N/A	N/A	N/A
\$125,000-\$149,999	4	2.9%	130,000	127,500	14	14	100.0%	100.0%
\$150,000-\$174,999	8	5.8%	165,288	168,250	19	6	99.7%	100.0%
\$175,000-\$199,999	12	8.6%	189,393	192,200	51	26	97.8%	98.9%
\$200,000-\$249,999	29	20.9%	223,728	224,900	27	5	99.2%	100.0%
\$250,000-\$299,999	24	17.3%	269,846	266,250	17	5	99.9%	100.0%
\$300,000-\$399,999	36	25.9%	337,922	338,450	30	6	99.0%	100.0%
\$400,000-\$499,999	14	10.1%	444,914	449,950	40	11	99.6%	100.0%
\$500,000-\$749,999	10	7.2%	590,335	557,950	21	18	99.6%	100.0%
\$750,000-\$999,999	0	0.0%	N/A	N/A	N/A	N/A	N/A	N/A
\$1,000,000 and up	2	1.4%	1,244,500	1,244,500	46	46	96.6%	96.6%



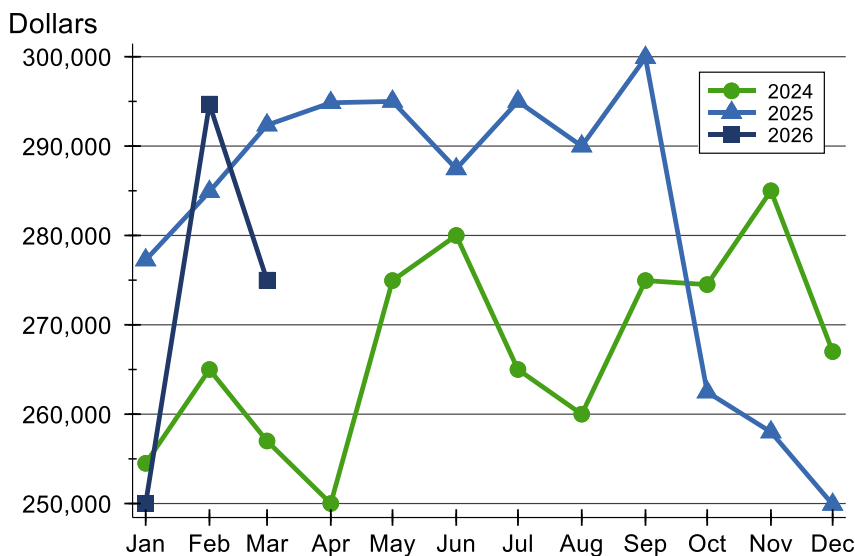
Riley County Pending Contracts Analysis

Average Price



Month	2024	2025	2026
January	265,435	286,336	317,843
February	286,582	296,961	325,567
March	285,474	316,662	315,581
April	288,841	317,326	
May	302,462	318,778	
June	332,969	325,903	
July	302,905	329,711	
August	314,883	346,475	
September	319,186	346,494	
October	301,509	314,946	
November	319,847	288,236	
December	315,334	303,644	

Median Price

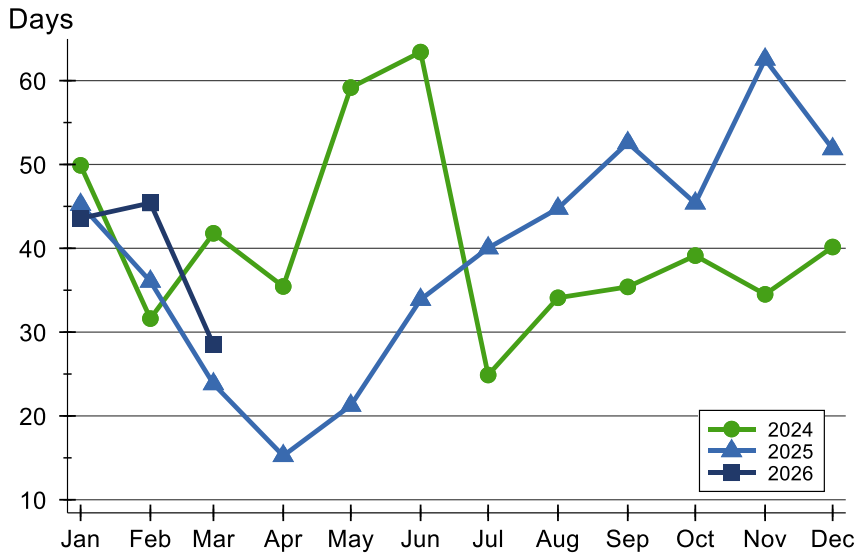


Month	2024	2025	2026
January	254,500	277,250	250,000
February	265,000	284,900	294,700
March	257,000	292,350	275,000
April	250,000	294,850	
May	274,950	295,000	
June	280,000	287,450	
July	265,000	295,000	
August	260,000	290,000	
September	274,950	299,900	
October	274,500	262,475	
November	285,000	258,000	
December	267,000	249,900	



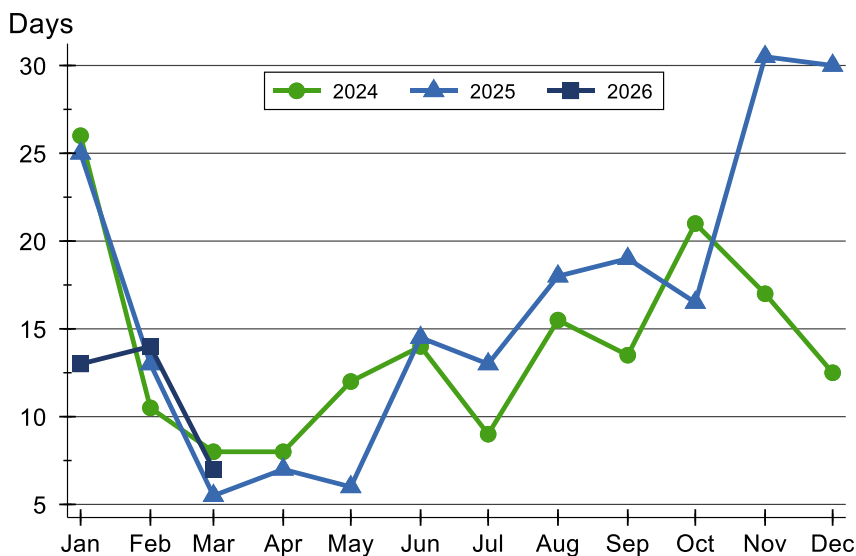
Riley County Pending Contracts Analysis

Average DOM



Month	2024	2025	2026
January	50	45	44
February	32	36	45
March	42	24	29
April	35	15	
May	59	21	
June	63	34	
July	25	40	
August	34	45	
September	35	53	
October	39	45	
November	35	63	
December	40	52	

Median DOM



Month	2024	2025	2026
January	26	25	13
February	11	13	14
March	8	6	7
April	8	7	
May	12	6	
June	14	15	
July	9	13	
August	16	18	
September	14	19	
October	21	17	
November	17	31	
December	13	30	