



**May  
2026**

# Flint Hills MLS Statistics



**FLINT HILLS  
ASSOCIATION  
OF REALTORS®**

## Wabaunsee County Housing Report



### Market Overview

#### Wabaunsee County Home Sales Fell in May

Total home sales in Wabaunsee County fell last month to 2 units, compared to 4 units in May 2025. Total sales volume was \$0.4 million, down from a year earlier.

The median sale price in May was \$214,250, down from \$282,450 a year earlier. Homes that sold in May were typically on the market for 32 days and sold for 99.7% of their list prices.

#### Wabaunsee County Active Listings Up at End of May

The total number of active listings in Wabaunsee County at the end of May was 5 units, up from 2 at the same point in 2025. This represents a 2.3 months' supply of homes available for sale. The median list price of homes on the market at the end of May was \$294,900.

During May, a total of 2 contracts were written up from 1 in May 2025. At the end of the month, there were 3 contracts still pending.

### Report Contents

- Summary Statistics – Page 2
- Closed Listing Analysis – Page 3
- Active Listings Analysis – Page 7
- Months' Supply Analysis – Page 11
- New Listings Analysis – Page 12
- Contracts Written Analysis – Page 15
- Pending Contracts Analysis – Page 19

### Contact Information

Margaret Rezek, Association Executive  
 Flint Hills Association of REALTORS®  
 205 S. Seth Child Road  
 Manhattan, KS 66502  
 785-776-1203  
[ae@flinthillsrealtors.net](mailto:ae@flinthillsrealtors.net)  
[www.flinthillsrealtors.net](http://www.flinthillsrealtors.net)



**May  
2026**

# Flint Hills MLS Statistics



**FLINT HILLS  
ASSOCIATION  
OF REALTORS®**

## Wabaunsee County Summary Statistics

May MLS Statistics Three-year History		Current Month			Year-to-Date		
		2026	2025	2024	2026	2025	2024
<b>Home Sales</b>		<b>2</b>	<b>4</b>	<b>6</b>	<b>6</b>	<b>13</b>	<b>12</b>
Change from prior year		-50.0%	-33.3%	100.0%	-53.8%	8.3%	50.0%
<b>Active Listings</b>		<b>5</b>	<b>2</b>	<b>6</b>	<b>N/A</b>	<b>N/A</b>	<b>N/A</b>
Change from prior year		150.0%	-66.7%	500.0%			
<b>Months' Supply</b>		<b>2.3</b>	<b>0.8</b>	<b>2.8</b>	<b>N/A</b>	<b>N/A</b>	<b>N/A</b>
Change from prior year		187.5%	-71.4%	366.7%			
<b>New Listings</b>		<b>3</b>	<b>1</b>	<b>6</b>	<b>15</b>	<b>13</b>	<b>13</b>
Change from prior year		200.0%	-83.3%	200.0%	15.4%	0.0%	8.3%
<b>Contracts Written</b>		<b>2</b>	<b>1</b>	<b>4</b>	<b>8</b>	<b>14</b>	<b>11</b>
Change from prior year		100.0%	-75.0%	-20.0%	-42.9%	27.3%	-15.4%
<b>Pending Contracts</b>		<b>3</b>	<b>6</b>	<b>4</b>	<b>N/A</b>	<b>N/A</b>	<b>N/A</b>
Change from prior year		-50.0%	50.0%	-20.0%			
<b>Sales Volume (1,000s)</b>		<b>429</b>	<b>1,294</b>	<b>1,886</b>	<b>1,439</b>	<b>3,919</b>	<b>3,573</b>
Change from prior year		-66.8%	-31.4%	219.1%	-63.3%	9.7%	146.8%
<b>Average</b>	<b>Sale Price</b>	<b>214,250</b>	<b>323,475</b>	<b>314,392</b>	<b>239,833</b>	<b>301,438</b>	<b>297,779</b>
	Change from prior year	-33.8%	2.9%	59.6%	-20.4%	1.2%	64.5%
	<b>List Price of Actives</b>	<b>761,760</b>	<b>280,000</b>	<b>338,150</b>	<b>N/A</b>	<b>N/A</b>	<b>N/A</b>
	Change from prior year	172.1%	-17.2%	104.9%			
	<b>Days on Market</b>	<b>32</b>	<b>55</b>	<b>48</b>	<b>43</b>	<b>55</b>	<b>66</b>
Change from prior year	-41.8%	14.6%	433.3%	-21.8%	-16.7%	6.5%	
	<b>Percent of List</b>	<b>99.7%</b>	<b>98.1%</b>	<b>95.4%</b>	<b>98.1%</b>	<b>99.4%</b>	<b>96.4%</b>
Change from prior year	1.6%	2.8%	-4.1%	-1.3%	3.1%	-1.8%	
	<b>Percent of Original</b>	<b>96.3%</b>	<b>95.2%</b>	<b>93.0%</b>	<b>95.7%</b>	<b>95.0%</b>	<b>93.1%</b>
Change from prior year	1.2%	2.4%	-6.5%	0.7%	2.0%	-4.3%	
<b>Median</b>	<b>Sale Price</b>	<b>214,250</b>	<b>282,450</b>	<b>275,000</b>	<b>224,500</b>	<b>274,900</b>	<b>278,500</b>
	Change from prior year	-24.1%	2.7%	22.2%	-18.3%	-1.3%	61.4%
	<b>List Price of Actives</b>	<b>294,900</b>	<b>280,000</b>	<b>277,000</b>	<b>N/A</b>	<b>N/A</b>	<b>N/A</b>
	Change from prior year	5.3%	1.1%	67.9%			
	<b>Days on Market</b>	<b>32</b>	<b>64</b>	<b>19</b>	<b>20</b>	<b>17</b>	<b>53</b>
Change from prior year	-50.0%	236.8%	280.0%	17.6%	-67.9%	112.0%	
	<b>Percent of List</b>	<b>99.7%</b>	<b>98.0%</b>	<b>96.2%</b>	<b>99.7%</b>	<b>100.0%</b>	<b>98.5%</b>
Change from prior year	1.7%	1.9%	-3.8%	-0.3%	1.5%	-0.7%	
	<b>Percent of Original</b>	<b>96.3%</b>	<b>98.0%</b>	<b>94.6%</b>	<b>96.3%</b>	<b>98.9%</b>	<b>96.4%</b>
Change from prior year	-1.7%	3.6%	-5.4%	-2.6%	2.6%	-2.8%	

Note: Year-to-date statistics cannot be calculated for Active Listings, Months' Supply and Pending Contracts.



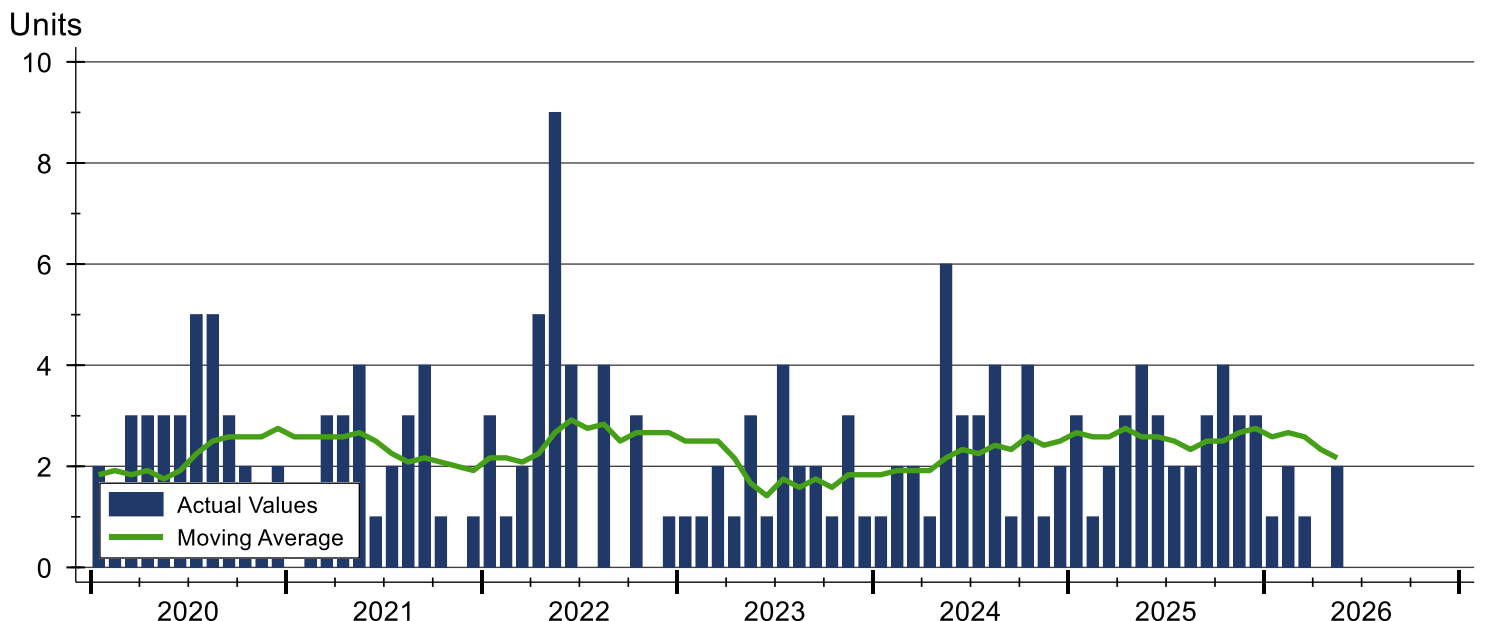
# Wabaunsee County Closed Listings Analysis

Summary Statistics for Closed Listings		2026	May 2025	Change	2026	Year-to-Date 2025	Change
Closed Listings		2	4	-50.0%	6	13	-53.8%
Volume (1,000s)		429	1,294	-66.8%	1,439	3,919	-63.3%
Months' Supply		2.3	0.8	187.5%	N/A	N/A	N/A
Average	Sale Price	214,250	323,475	-33.8%	239,833	301,438	-20.4%
	Days on Market	32	55	-41.8%	43	55	-21.8%
	Percent of List	99.7%	98.1%	1.6%	98.1%	99.4%	-1.3%
	Percent of Original	96.3%	95.2%	1.2%	95.7%	95.0%	0.7%
Median	Sale Price	214,250	282,450	-24.1%	224,500	274,900	-18.3%
	Days on Market	32	64	-50.0%	20	17	17.6%
	Percent of List	99.7%	98.0%	1.7%	99.7%	100.0%	-0.3%
	Percent of Original	96.3%	98.0%	-1.7%	96.3%	98.9%	-2.6%

A total of 2 homes sold in Wabaunsee County in May, down from 4 units in May 2025. Total sales volume fell to \$0.4 million compared to \$1.3 million in the previous year.

The median sales price in May was \$214,250, down 24.1% compared to the prior year. Median days on market in May was 32 days.

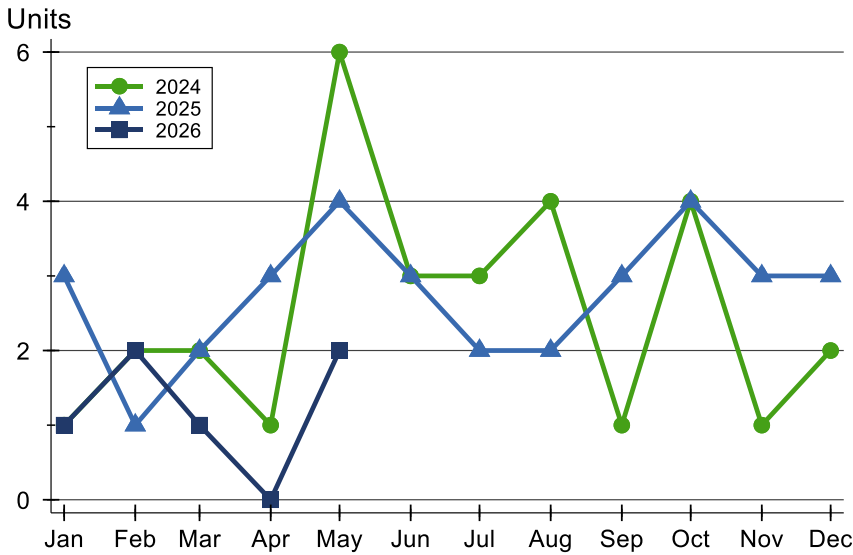
## History of Closed Listings





# Wabaunsee County Closed Listings Analysis

## Closed Listings by Month



Month	2024	2025	2026
January	1	3	1
February	2	1	2
March	2	2	1
April	1	3	0
May	6	4	2
June	3	3	0
July	3	2	0
August	4	2	0
September	1	3	0
October	4	4	0
November	1	3	0
December	2	3	0

## Closed Listings by Price Range

Price Range	Sales		Months' Supply	Sale Price		Days on Market		Price as % of List		Price as % of Orig.	
	Number	Percent		Average	Median	Avg.	Med.	Avg.	Med.	Avg.	Med.
Below \$25,000	0	0.0%	N/A	N/A	N/A	N/A	N/A	N/A	N/A	N/A	N/A
\$25,000-\$49,999	0	0.0%	N/A	N/A	N/A	N/A	N/A	N/A	N/A	N/A	N/A
\$50,000-\$99,999	0	0.0%	N/A	N/A	N/A	N/A	N/A	N/A	N/A	N/A	N/A
\$100,000-\$124,999	0	0.0%	N/A	N/A	N/A	N/A	N/A	N/A	N/A	N/A	N/A
\$125,000-\$149,999	1	50.0%	0.0	149,500	149,500	11	11	99.7%	99.7%	99.7%	99.7%
\$150,000-\$174,999	0	0.0%	N/A	N/A	N/A	N/A	N/A	N/A	N/A	N/A	N/A
\$175,000-\$199,999	0	0.0%	N/A	N/A	N/A	N/A	N/A	N/A	N/A	N/A	N/A
\$200,000-\$249,999	0	0.0%	N/A	N/A	N/A	N/A	N/A	N/A	N/A	N/A	N/A
\$250,000-\$299,999	1	50.0%	9.0	279,000	279,000	52	52	99.6%	99.6%	93.0%	93.0%
\$300,000-\$399,999	0	0.0%	N/A	N/A	N/A	N/A	N/A	N/A	N/A	N/A	N/A
\$400,000-\$499,999	0	0.0%	N/A	N/A	N/A	N/A	N/A	N/A	N/A	N/A	N/A
\$500,000-\$749,999	0	0.0%	N/A	N/A	N/A	N/A	N/A	N/A	N/A	N/A	N/A
\$750,000-\$999,999	0	0.0%	N/A	N/A	N/A	N/A	N/A	N/A	N/A	N/A	N/A
\$1,000,000 and up	0	0.0%	N/A	N/A	N/A	N/A	N/A	N/A	N/A	N/A	N/A



**May  
2026**

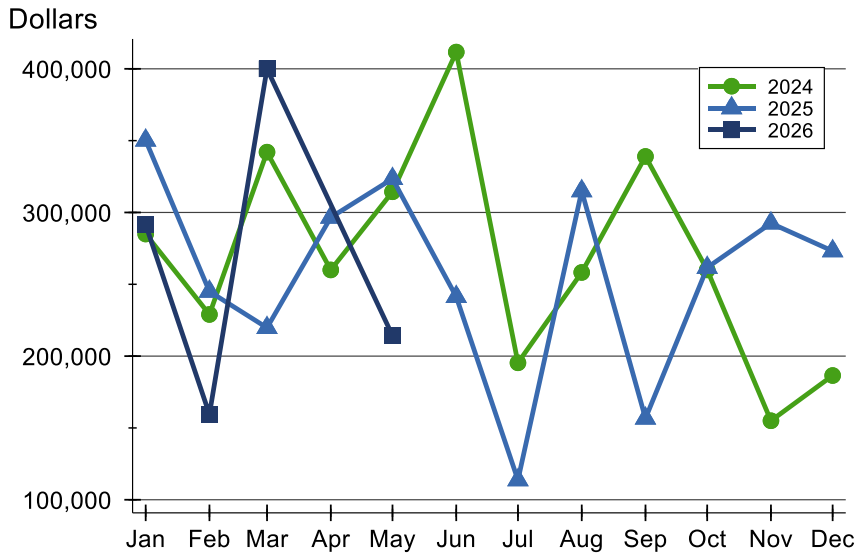
# Flint Hills MLS Statistics



**FLINT HILLS  
ASSOCIATION  
OF REALTORS®**

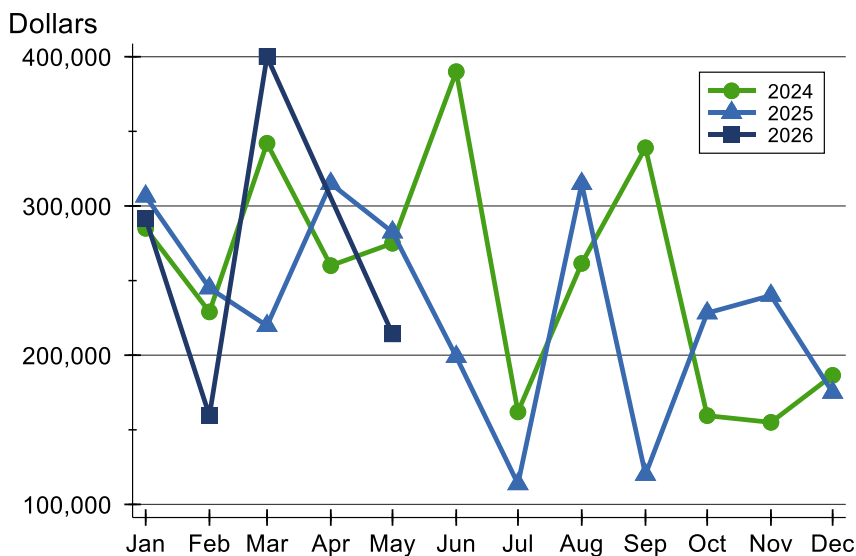
## Wabaunsee County Closed Listings Analysis

### Average Price



Month	2024	2025	2026
January	285,000	350,200	<b>291,500</b>
February	229,000	245,000	<b>159,500</b>
March	342,000	219,750	<b>400,000</b>
April	260,000	296,567	<b>N/A</b>
May	314,392	323,475	<b>214,250</b>
June	411,667	241,333	
July	195,333	113,750	
August	258,250	314,950	
September	339,000	156,667	
October	260,000	261,626	
November	155,000	292,500	
December	186,500	273,167	

### Median Price

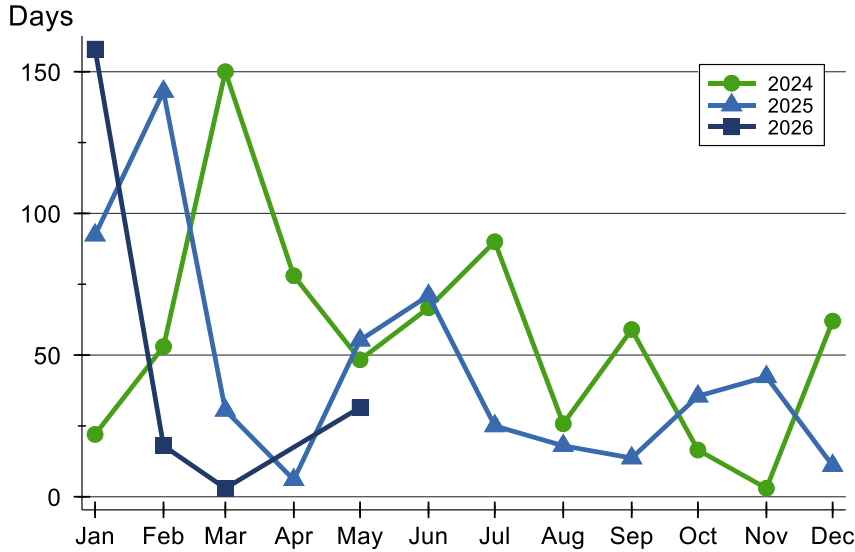


Month	2024	2025	2026
January	285,000	306,500	<b>291,500</b>
February	229,000	245,000	<b>159,500</b>
March	342,000	219,750	<b>400,000</b>
April	260,000	315,000	<b>N/A</b>
May	275,000	282,450	<b>214,250</b>
June	390,000	199,000	
July	162,000	113,750	
August	261,500	314,950	
September	339,000	120,000	
October	159,500	228,250	
November	155,000	240,000	
December	186,500	175,000	



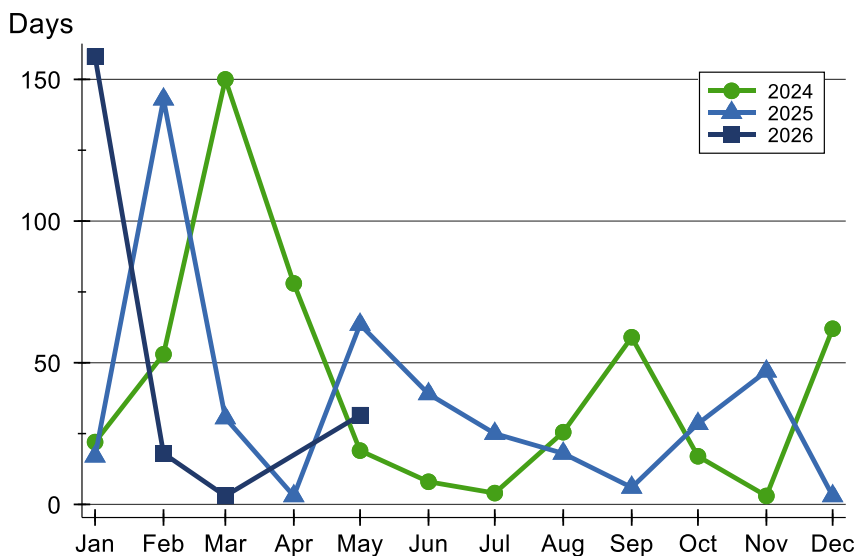
# Wabaunsee County Closed Listings Analysis

## Average DOM



Month	2024	2025	2026
January	22	92	<b>158</b>
February	53	143	<b>18</b>
March	150	31	<b>3</b>
April	78	6	<b>N/A</b>
May	48	55	<b>32</b>
June	67	71	
July	90	25	
August	26	18	
September	59	14	
October	17	36	
November	3	42	
December	62	11	

## Median DOM



Month	2024	2025	2026
January	22	17	<b>158</b>
February	53	143	<b>18</b>
March	150	31	<b>3</b>
April	78	3	<b>N/A</b>
May	19	64	<b>32</b>
June	8	39	
July	4	25	
August	26	18	
September	59	6	
October	17	29	
November	3	47	
December	62	3	



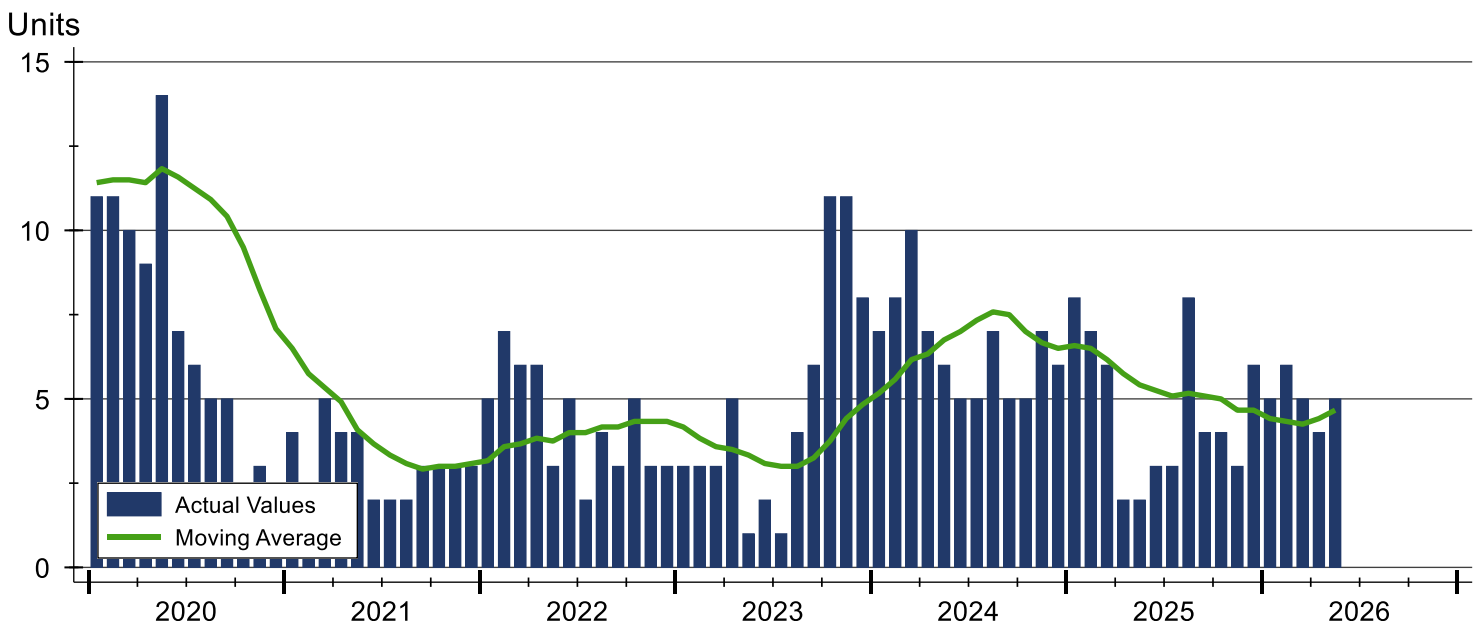
# Wabaunsee County Active Listings Analysis

Summary Statistics for Active Listings		2026	End of May 2025	Change
Active Listings		5	2	150.0%
Volume (1,000s)		3,809	560	580.2%
Months' Supply		2.3	0.8	187.5%
Average	List Price	761,760	280,000	172.1%
	Days on Market	17	103	-83.5%
	Percent of Original	98.1%	97.8%	0.3%
Median	List Price	294,900	280,000	5.3%
	Days on Market	19	103	-81.6%
	Percent of Original	100.0%	97.8%	2.2%

A total of 5 homes were available for sale in Wabaunsee County at the end of May. This represents a 2.3 months' supply of active listings.

The median list price of homes on the market at the end of May was \$294,900, up 5.3% from 2025. The typical time on market for active listings was 19 days, down from 102 days a year earlier.

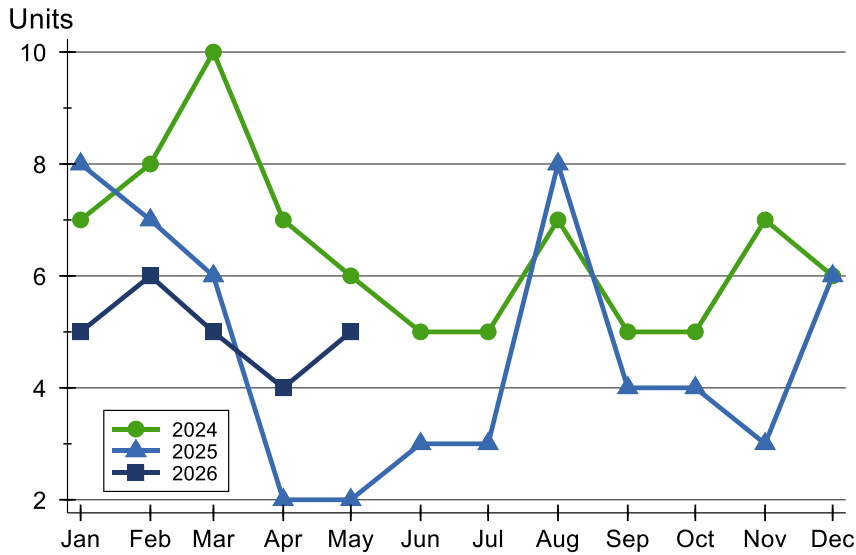
## History of Active Listings





## Wabaunsee County Active Listings Analysis

### Active Listings by Month



Month	2024	2025	2026
January	7	8	5
February	8	7	6
March	10	6	5
April	7	2	4
May	6	2	5
June	5	3	3
July	5	3	3
August	7	8	3
September	5	4	4
October	5	4	4
November	7	3	3
December	6	6	6

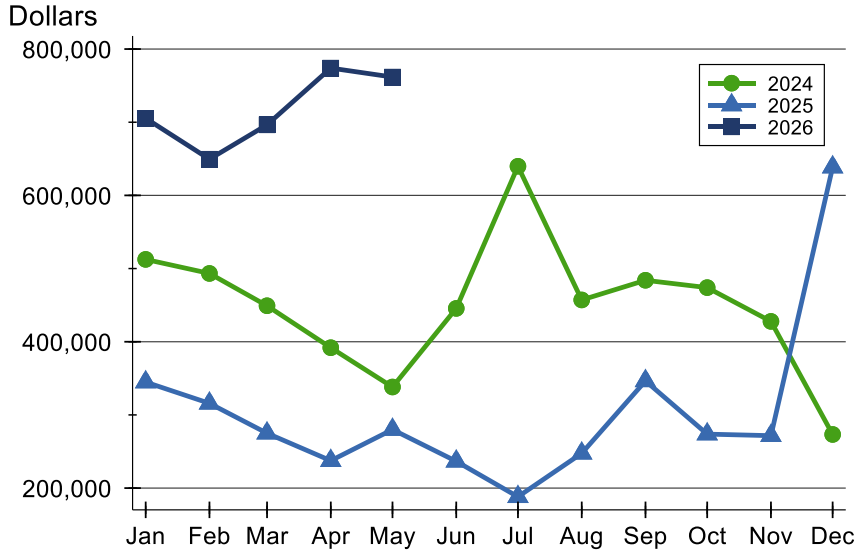
### Active Listings by Price Range

Price Range	Active Listings		Months' Supply	List Price		Days on Market		Price as % of Orig.	
	Number	Percent		Average	Median	Avg.	Med.	Avg.	Med.
Below \$25,000	0	0.0%	N/A	N/A	N/A	N/A	N/A	N/A	N/A
\$25,000-\$49,999	0	0.0%	N/A	N/A	N/A	N/A	N/A	N/A	N/A
\$50,000-\$99,999	0	0.0%	N/A	N/A	N/A	N/A	N/A	N/A	N/A
\$100,000-\$124,999	0	0.0%	N/A	N/A	N/A	N/A	N/A	N/A	N/A
\$125,000-\$149,999	0	0.0%	0.0	N/A	N/A	N/A	N/A	N/A	N/A
\$150,000-\$174,999	0	0.0%	N/A	N/A	N/A	N/A	N/A	N/A	N/A
\$175,000-\$199,999	0	0.0%	N/A	N/A	N/A	N/A	N/A	N/A	N/A
\$200,000-\$249,999	0	0.0%	N/A	N/A	N/A	N/A	N/A	N/A	N/A
\$250,000-\$299,999	3	60.0%	9.0	286,600	284,900	17	21	100.0%	100.0%
\$300,000-\$399,999	0	0.0%	N/A	N/A	N/A	N/A	N/A	N/A	N/A
\$400,000-\$499,999	0	0.0%	N/A	N/A	N/A	N/A	N/A	N/A	N/A
\$500,000-\$749,999	1	20.0%	N/A	749,000	749,000	19	19	90.5%	90.5%
\$750,000-\$999,999	0	0.0%	N/A	N/A	N/A	N/A	N/A	N/A	N/A
\$1,000,000 and up	1	20.0%	N/A	2,200,000	2,200,000	12	12	100.0%	100.0%



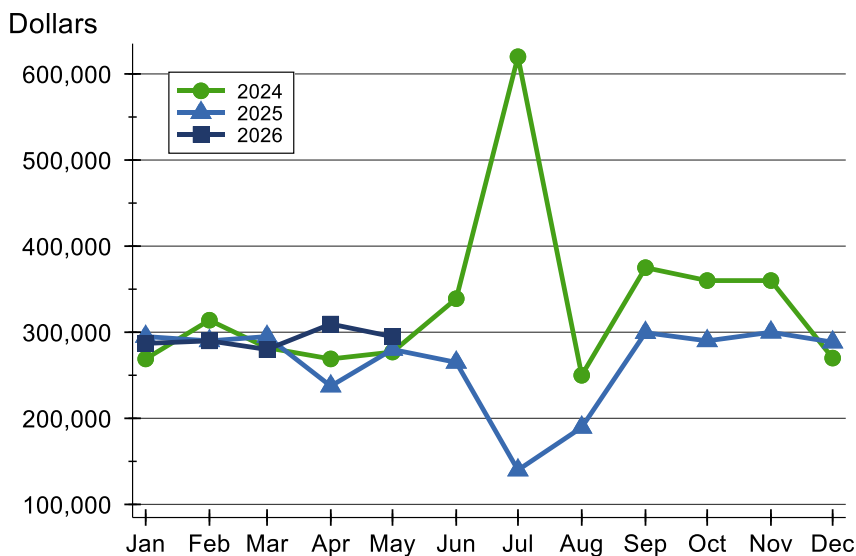
# Wabaunsee County Active Listings Analysis

## Average Price



Month	2024	2025	2026
January	512,571	344,863	<b>705,380</b>
February	493,375	315,857	<b>649,500</b>
March	449,200	275,000	<b>696,400</b>
April	391,857	237,450	<b>774,000</b>
May	338,150	280,000	<b>761,760</b>
June	445,590	236,633	
July	639,800	188,133	
August	457,136	247,550	
September	484,000	346,500	
October	474,000	273,750	
November	427,843	271,667	
December	273,317	638,650	

## Median Price

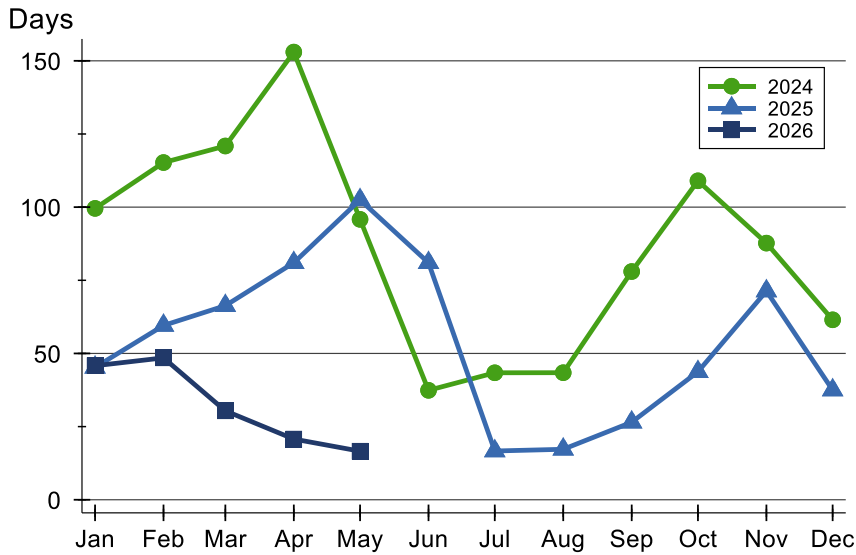


Month	2024	2025	2026
January	269,000	295,000	<b>287,000</b>
February	314,000	290,000	<b>290,000</b>
March	282,000	295,000	<b>279,999</b>
April	269,000	237,450	<b>309,500</b>
May	277,000	280,000	<b>294,900</b>
June	339,000	265,000	
July	620,000	139,900	
August	250,000	189,500	
September	375,000	299,500	
October	360,000	290,000	
November	360,000	300,000	
December	270,000	288,500	



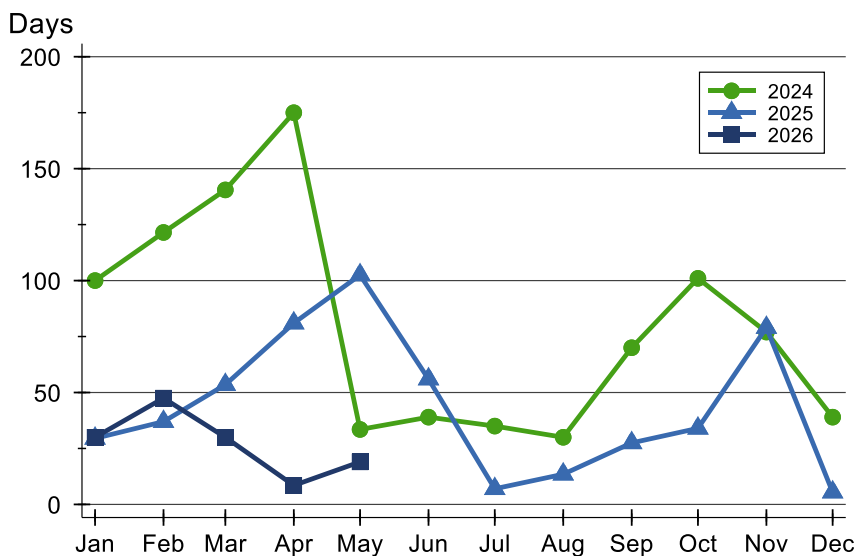
# Wabaunsee County Active Listings Analysis

## Average DOM



Month	2024	2025	2026
January	100	45	46
February	115	60	49
March	121	66	30
April	153	81	21
May	96	103	17
June	37	81	81
July	43	17	17
August	43	17	17
September	78	27	27
October	109	44	44
November	88	71	71
December	62	38	38

## Median DOM

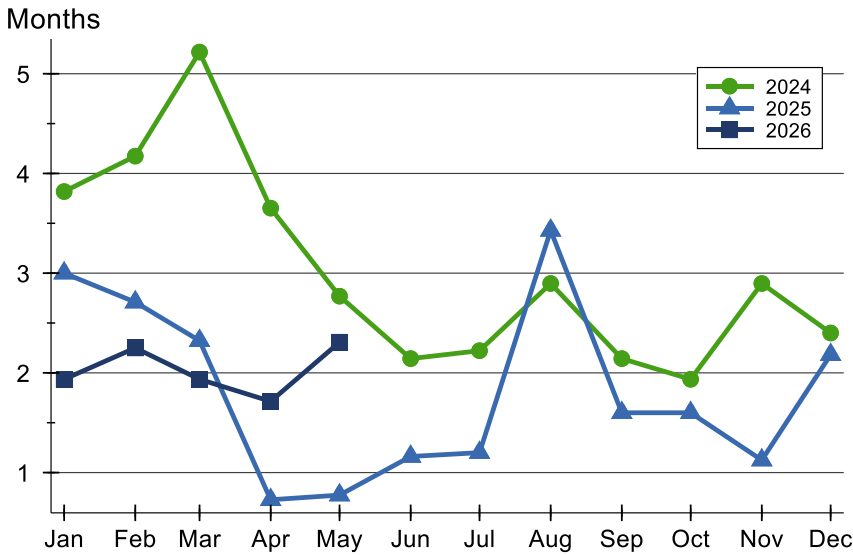


Month	2024	2025	2026
January	100	30	30
February	122	37	48
March	141	54	30
April	175	81	9
May	34	103	19
June	39	56	56
July	35	7	7
August	30	14	14
September	70	28	28
October	101	34	34
November	77	79	79
December	39	6	6



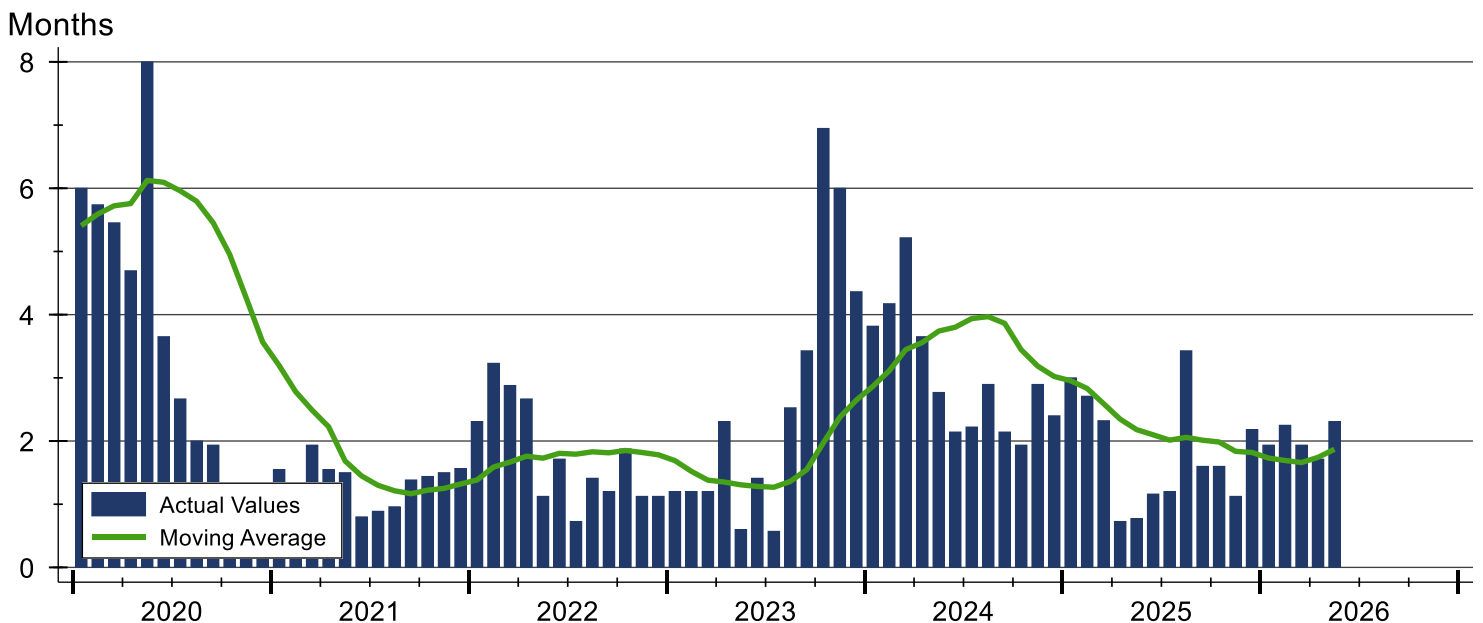
# Wabaunsee County Months' Supply Analysis

## Months' Supply by Month



Month	2024	2025	2026
January	3.8	3.0	1.9
February	4.2	2.7	2.3
March	5.2	2.3	1.9
April	3.7	0.7	1.7
May	2.8	0.8	2.3
June	2.1	1.2	
July	2.2	1.2	
August	2.9	3.4	
September	2.1	1.6	
October	1.9	1.6	
November	2.9	1.1	
December	2.4	2.2	

## History of Month's Supply





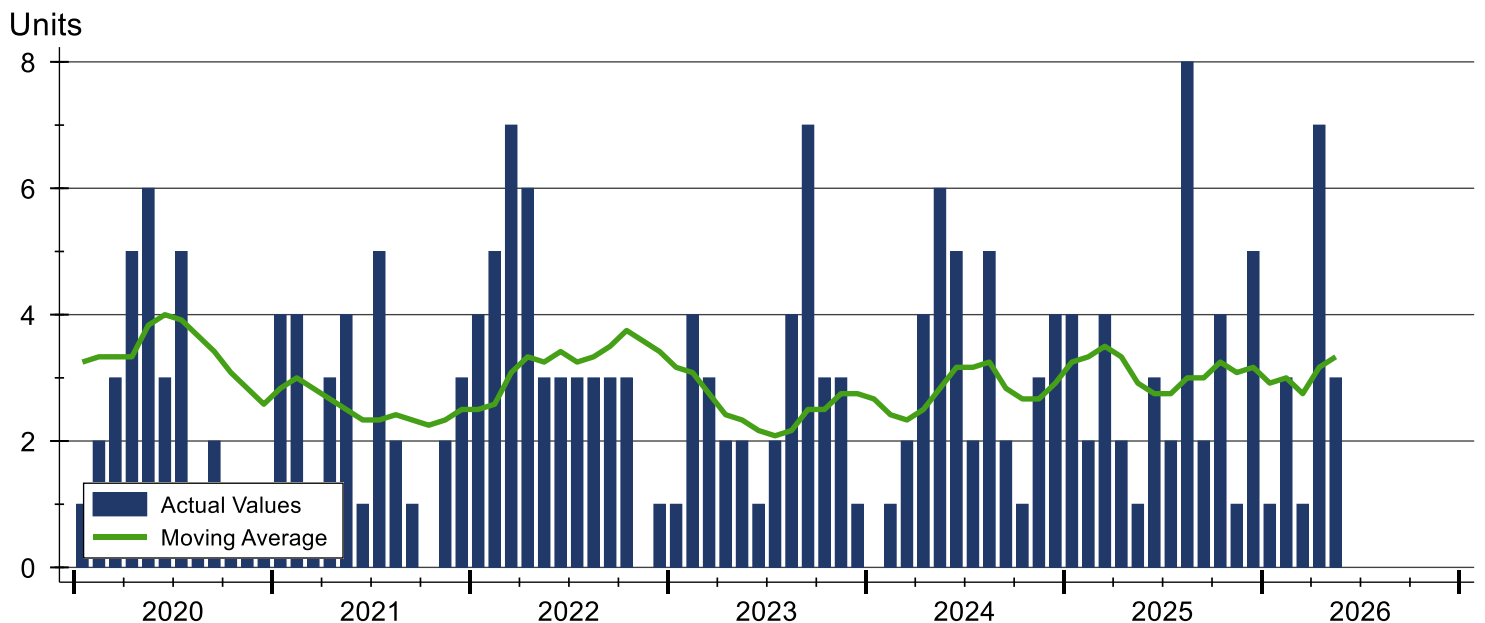
# Wabaunsee County New Listings Analysis

Summary Statistics for New Listings		2026	May 2025	Change
Current Month	New Listings	3	1	200.0%
	Volume (1,000s)	1,443	265	444.5%
	Average List Price	480,967	265,000	81.5%
	Median List Price	399,000	265,000	50.6%
Year-to-Date	New Listings	15	13	15.4%
	Volume (1,000s)	6,435	3,314	94.2%
	Average List Price	428,987	254,908	68.3%
	Median List Price	280,000	250,000	12.0%

A total of 3 new listings were added in Wabaunsee County during May, up 200.0% from the same month in 2025. Year-to-date Wabaunsee County has seen 15 new listings.

The median list price of these homes was \$399,000 up from \$265,000 in 2025.

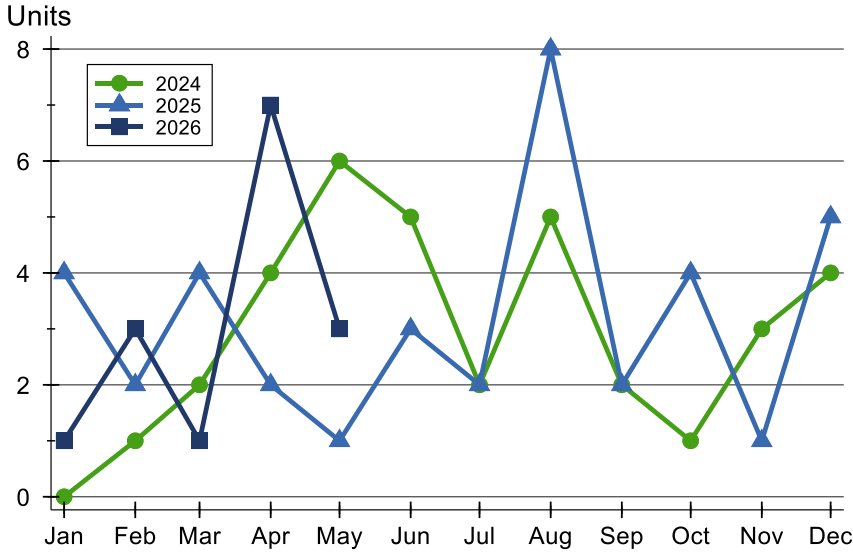
## History of New Listings





## Wabaunsee County New Listings Analysis

### New Listings by Month



Month	2024	2025	2026
January	0	4	1
February	1	2	3
March	2	4	1
April	4	2	7
May	6	1	3
June	5	3	
July	2	2	
August	5	8	
September	2	2	
October	1	4	
November	3	1	
December	4	5	

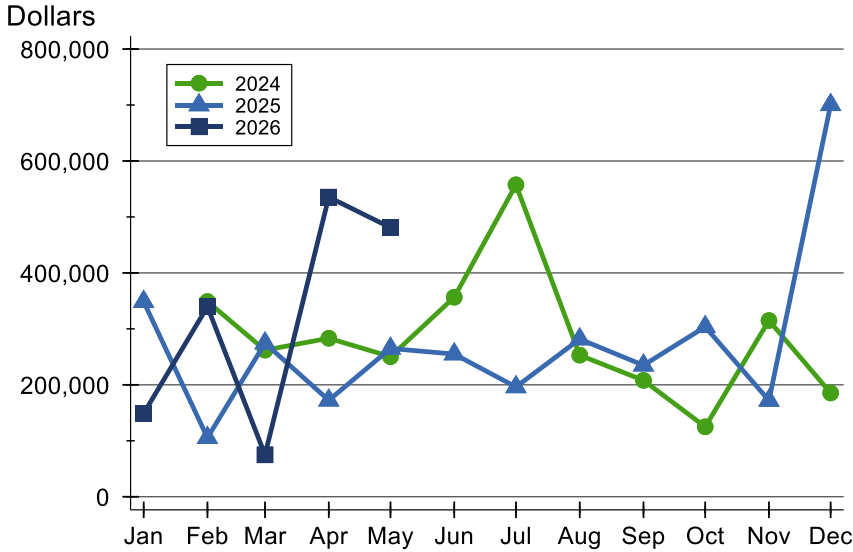
### New Listings by Price Range

Price Range	New Listings		List Price		Days on Market		Price as % of Orig.	
	Number	Percent	Average	Median	Avg.	Med.	Avg.	Med.
Below \$25,000	0	0.0%	N/A	N/A	N/A	N/A	N/A	N/A
\$25,000-\$49,999	0	0.0%	N/A	N/A	N/A	N/A	N/A	N/A
\$50,000-\$99,999	0	0.0%	N/A	N/A	N/A	N/A	N/A	N/A
\$100,000-\$124,999	0	0.0%	N/A	N/A	N/A	N/A	N/A	N/A
\$125,000-\$149,999	0	0.0%	N/A	N/A	N/A	N/A	N/A	N/A
\$150,000-\$174,999	0	0.0%	N/A	N/A	N/A	N/A	N/A	N/A
\$175,000-\$199,999	0	0.0%	N/A	N/A	N/A	N/A	N/A	N/A
\$200,000-\$249,999	0	0.0%	N/A	N/A	N/A	N/A	N/A	N/A
\$250,000-\$299,999	1	33.3%	294,900	294,900	6	6	100.0%	100.0%
\$300,000-\$399,999	1	33.3%	399,000	399,000	10	10	100.0%	100.0%
\$400,000-\$499,999	0	0.0%	N/A	N/A	N/A	N/A	N/A	N/A
\$500,000-\$749,999	1	33.3%	749,000	749,000	21	21	90.5%	90.5%
\$750,000-\$999,999	0	0.0%	N/A	N/A	N/A	N/A	N/A	N/A
\$1,000,000 and up	0	0.0%	N/A	N/A	N/A	N/A	N/A	N/A



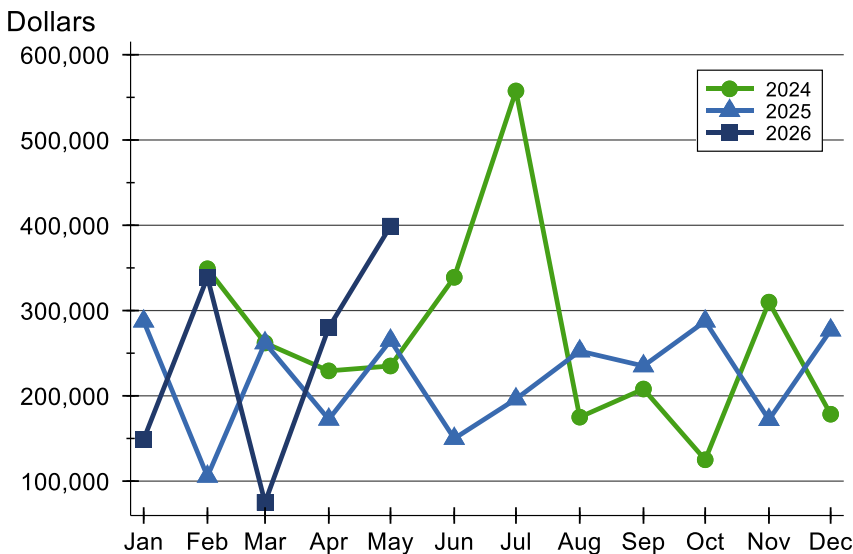
# Wabaunsee County New Listings Analysis

## Average Price



Month	2024	2025	2026
January	N/A	348,750	<b>149,000</b>
February	349,000	105,500	<b>339,666</b>
March	262,000	274,500	<b>75,000</b>
April	283,250	172,400	<b>535,557</b>
May	250,333	265,000	<b>480,967</b>
June	356,600	254,933	
July	557,500	196,250	
August	252,980	281,750	
September	208,000	235,000	
October	125,000	303,750	
November	314,967	172,000	
December	185,450	700,380	

## Median Price



Month	2024	2025	2026
January	N/A	287,500	<b>149,000</b>
February	349,000	105,500	<b>339,000</b>
March	262,000	262,000	<b>75,000</b>
April	229,250	172,400	<b>280,000</b>
May	235,000	265,000	<b>399,000</b>
June	339,000	149,900	
July	557,500	196,250	
August	175,000	252,500	
September	208,000	235,000	
October	125,000	287,500	
November	309,900	172,000	
December	178,450	277,000	



**May  
2026**

# Flint Hills MLS Statistics



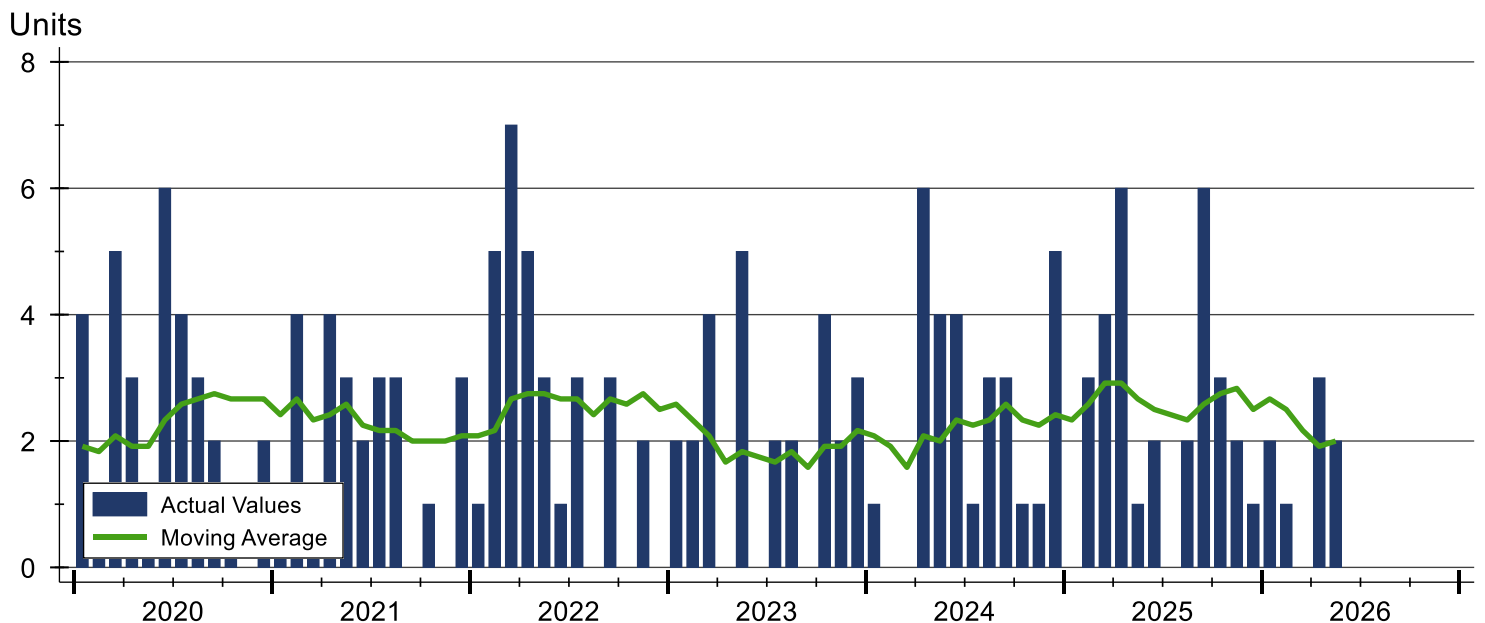
**FLINT HILLS  
ASSOCIATION  
OF REALTORS®**

## Wabaunsee County Contracts Written Analysis

Summary Statistics for Contracts Written		2026	May 2025	Change	Year-to-Date		
		2026	2025	Change	2026	2025	Change
Contracts Written		<b>2</b>	1	100.0%	<b>8</b>	14	-42.9%
Volume (1,000s)		<b>738</b>	165	347.3%	<b>1,977</b>	3,689	-46.4%
Average	Sale Price	<b>369,000</b>	164,900	123.8%	<b>247,125</b>	263,479	-6.2%
	Days on Market	<b>51</b>	33	54.5%	<b>30</b>	42	-28.6%
	Percent of Original	<b>98.4%</b>	91.7%	7.3%	<b>97.7%</b>	94.8%	3.1%
Median	Sale Price	<b>369,000</b>	164,900	123.8%	<b>232,500</b>	224,500	3.6%
	Days on Market	<b>51</b>	33	54.5%	<b>20</b>	36	-44.4%
	Percent of Original	<b>98.4%</b>	91.7%	7.3%	<b>99.8%</b>	96.7%	3.2%

A total of 2 contracts for sale were written in Wabaunsee County during the month of May, up from 1 in 2025. The median list price of these homes was \$369,000, up from \$164,900 the prior year. Half of the homes that went under contract in May were on the market less than 51 days, compared to 33 days in May 2025.

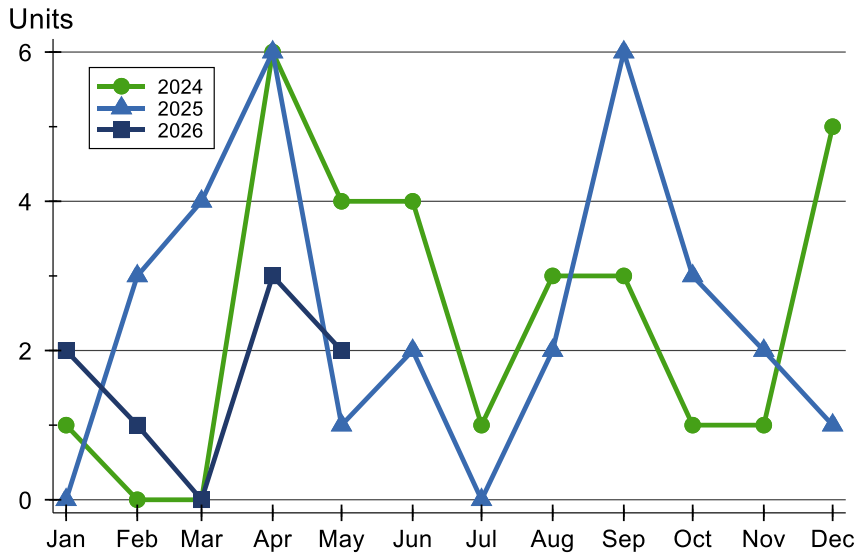
## History of Contracts Written





## Wabaunsee County Contracts Written Analysis

### Contracts Written by Month



Month	2024	2025	2026
January	1	N/A	2
February	N/A	3	1
March	N/A	4	N/A
April	6	6	3
May	4	1	2
June	4	2	
July	1	N/A	
August	3	2	
September	3	6	
October	1	3	
November	1	2	
December	5	1	

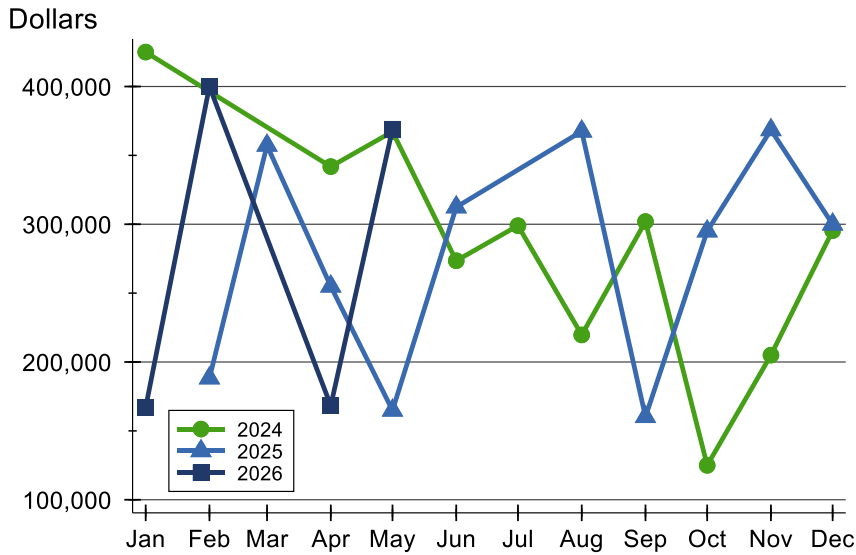
### Contracts Written by Price Range

Price Range	Contracts Written		List Price		Days on Market		Price as % of Orig.	
	Number	Percent	Average	Median	Avg.	Med.	Avg.	Med.
Below \$25,000	0	0.0%	N/A	N/A	N/A	N/A	N/A	N/A
\$25,000-\$49,999	0	0.0%	N/A	N/A	N/A	N/A	N/A	N/A
\$50,000-\$99,999	0	0.0%	N/A	N/A	N/A	N/A	N/A	N/A
\$100,000-\$124,999	0	0.0%	N/A	N/A	N/A	N/A	N/A	N/A
\$125,000-\$149,999	0	0.0%	N/A	N/A	N/A	N/A	N/A	N/A
\$150,000-\$174,999	0	0.0%	N/A	N/A	N/A	N/A	N/A	N/A
\$175,000-\$199,999	0	0.0%	N/A	N/A	N/A	N/A	N/A	N/A
\$200,000-\$249,999	0	0.0%	N/A	N/A	N/A	N/A	N/A	N/A
\$250,000-\$299,999	0	0.0%	N/A	N/A	N/A	N/A	N/A	N/A
\$300,000-\$399,999	2	100.0%	369,000	369,000	51	51	98.4%	98.4%
\$400,000-\$499,999	0	0.0%	N/A	N/A	N/A	N/A	N/A	N/A
\$500,000-\$749,999	0	0.0%	N/A	N/A	N/A	N/A	N/A	N/A
\$750,000-\$999,999	0	0.0%	N/A	N/A	N/A	N/A	N/A	N/A
\$1,000,000 and up	0	0.0%	N/A	N/A	N/A	N/A	N/A	N/A



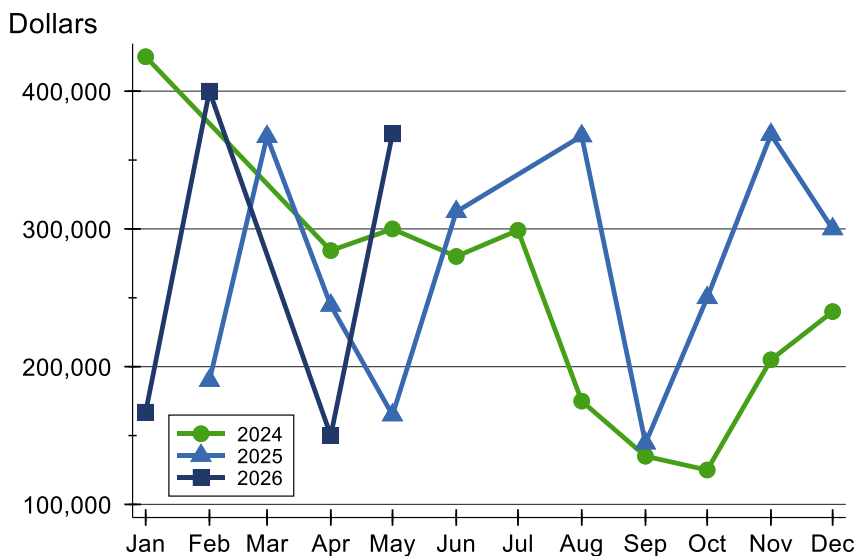
# Wabaunsee County Contracts Written Analysis

## Average Price



Month	2024	2025	2026
January	425,000	N/A	167,000
February	N/A	188,300	400,000
March	N/A	357,250	N/A
April	341,833	254,983	168,333
May	367,250	164,900	369,000
June	273,500	312,450	
July	299,000	N/A	
August	219,667	367,500	
September	301,983	160,233	
October	125,000	295,000	
November	205,000	368,500	
December	295,380	300,000	

## Median Price

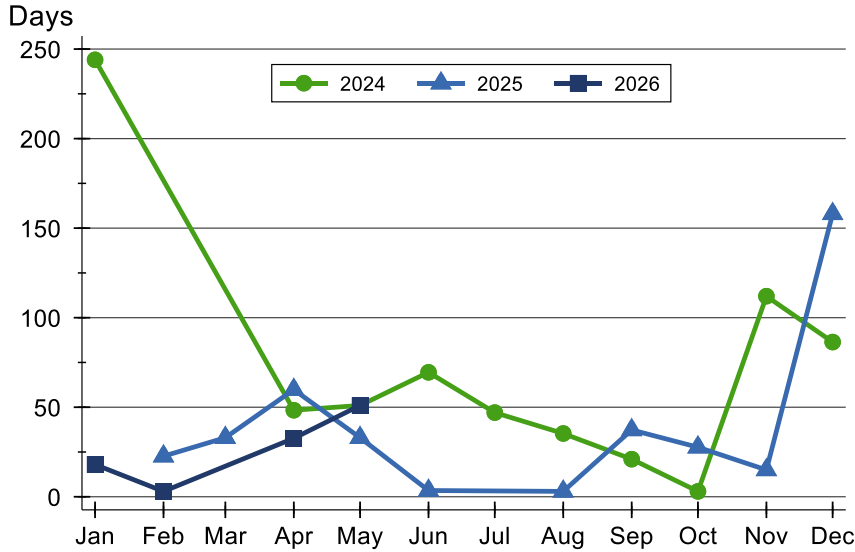


Month	2024	2025	2026
January	425,000	N/A	167,000
February	N/A	189,900	400,000
March	N/A	367,000	N/A
April	284,250	244,500	150,000
May	300,000	164,900	369,000
June	280,000	312,450	
July	299,000	N/A	
August	175,000	367,500	
September	135,000	144,450	
October	125,000	250,000	
November	205,000	368,500	
December	240,000	300,000	



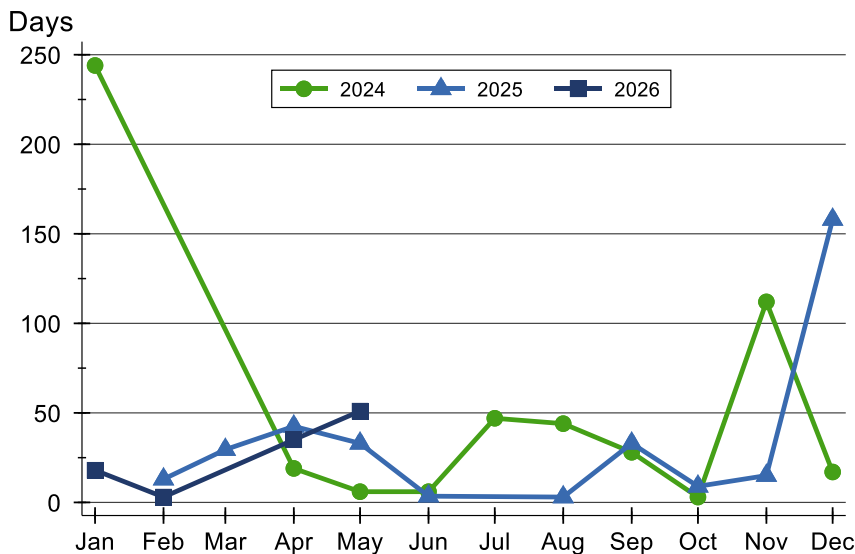
# Wabaunsee County Contracts Written Analysis

## Average DOM



Month	2024	2025	2026
January	244	N/A	18
February	N/A	23	3
March	N/A	33	N/A
April	48	60	33
May	51	33	51
June	70	4	
July	47	N/A	
August	35	3	
September	21	37	
October	3	28	
November	112	15	
December	86	158	

## Median DOM



Month	2024	2025	2026
January	244	N/A	18
February	N/A	13	3
March	N/A	30	N/A
April	19	43	35
May	6	33	51
June	6	4	
July	47	N/A	
August	44	3	
September	28	33	
October	3	9	
November	112	15	
December	17	158	



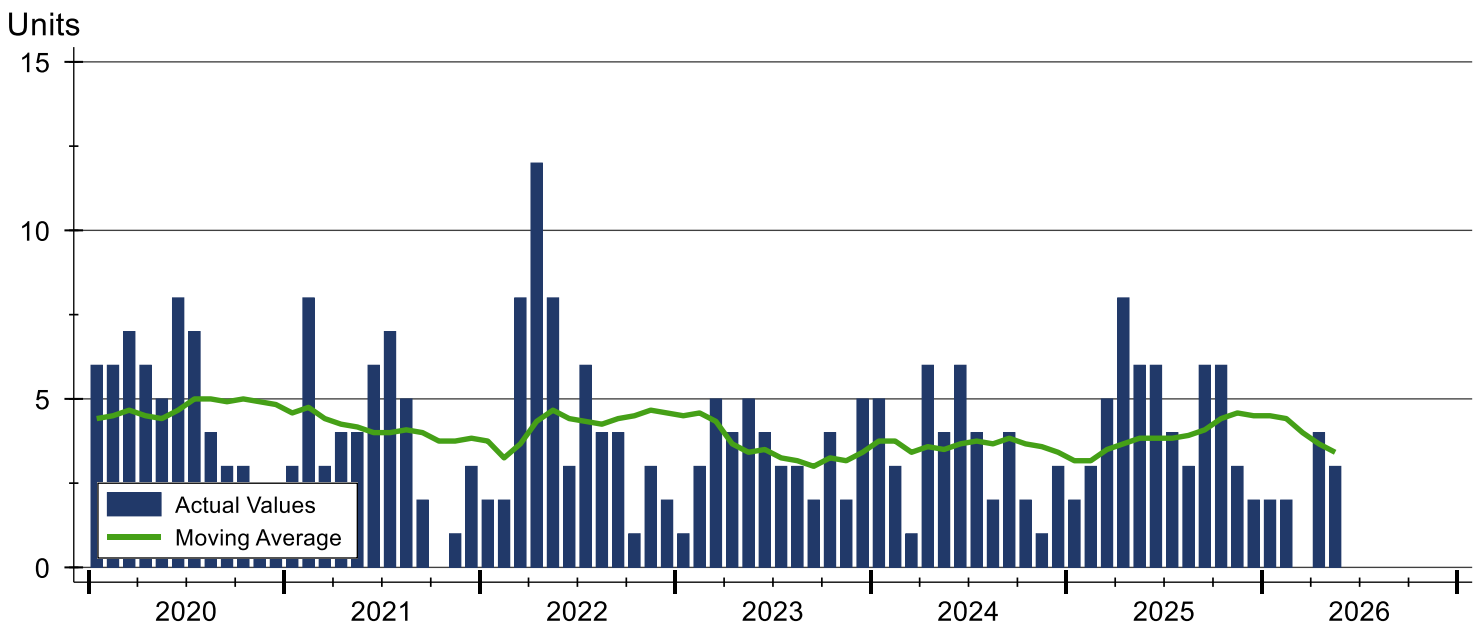
# Wabaunsee County Pending Contracts Analysis

Summary Statistics for Pending Contracts		2026	End of May 2025	Change
Pending Contracts		3	6	-50.0%
Volume (1,000s)		813	1,315	-38.2%
Average	List Price	271,000	219,150	23.7%
	Days on Market	46	64	-28.1%
	Percent of Original	99.0%	95.8%	3.3%
Median	List Price	339,000	181,950	86.3%
	Days on Market	35	43	-18.6%
	Percent of Original	100.0%	100.0%	0.0%

A total of 3 listings in Wabaunsee County had contracts pending at the end of May, down from 6 contracts pending at the end of May 2025.

Pending contracts reflect listings with a contract in place at the end of the month. In contrast, contracts written measures the number of listings put under contract during the month.

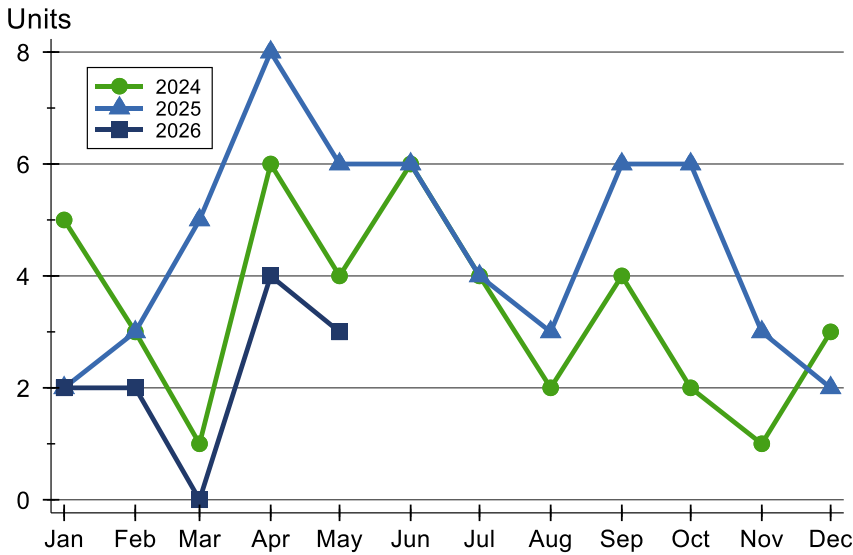
## History of Pending Contracts





## Wabaunsee County Pending Contracts Analysis

### Pending Contracts by Month



Month	2024	2025	2026
<b>January</b>	5	2	<b>2</b>
<b>February</b>	3	3	<b>2</b>
<b>March</b>	1	5	<b>0</b>
<b>April</b>	6	8	<b>4</b>
<b>May</b>	4	6	<b>3</b>
<b>June</b>	6	6	
<b>July</b>	4	4	
<b>August</b>	2	3	
<b>September</b>	4	6	
<b>October</b>	2	6	
<b>November</b>	1	3	
<b>December</b>	3	2	

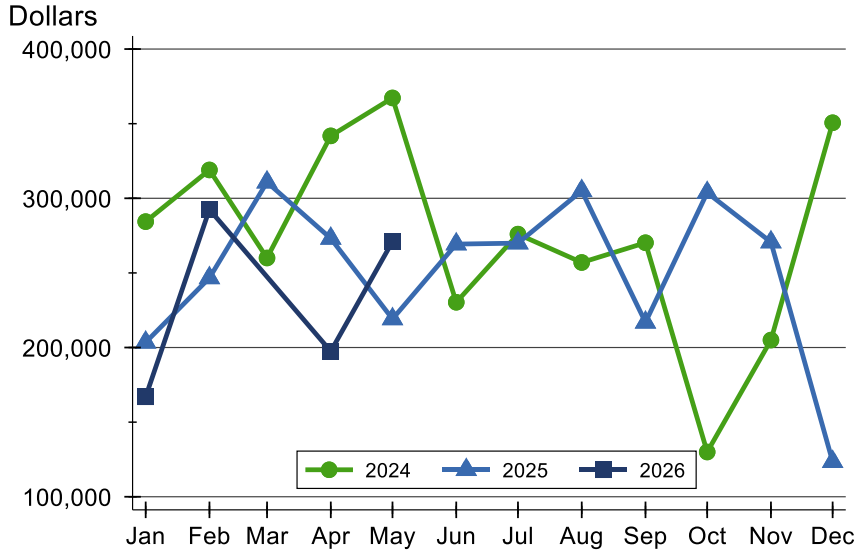
### Pending Contracts by Price Range

Price Range	Pending Contracts		List Price		Days on Market		Price as % of Orig.	
	Number	Percent	Average	Median	Avg.	Med.	Avg.	Med.
Below \$25,000	0	0.0%	N/A	N/A	N/A	N/A	N/A	N/A
\$25,000-\$49,999	0	0.0%	N/A	N/A	N/A	N/A	N/A	N/A
\$50,000-\$99,999	1	33.3%	75,000	75,000	35	35	100.0%	100.0%
\$100,000-\$124,999	0	0.0%	N/A	N/A	N/A	N/A	N/A	N/A
\$125,000-\$149,999	0	0.0%	N/A	N/A	N/A	N/A	N/A	N/A
\$150,000-\$174,999	0	0.0%	N/A	N/A	N/A	N/A	N/A	N/A
\$175,000-\$199,999	0	0.0%	N/A	N/A	N/A	N/A	N/A	N/A
\$200,000-\$249,999	0	0.0%	N/A	N/A	N/A	N/A	N/A	N/A
\$250,000-\$299,999	0	0.0%	N/A	N/A	N/A	N/A	N/A	N/A
\$300,000-\$399,999	2	66.7%	369,000	369,000	51	51	98.4%	98.4%
\$400,000-\$499,999	0	0.0%	N/A	N/A	N/A	N/A	N/A	N/A
\$500,000-\$749,999	0	0.0%	N/A	N/A	N/A	N/A	N/A	N/A
\$750,000-\$999,999	0	0.0%	N/A	N/A	N/A	N/A	N/A	N/A
\$1,000,000 and up	0	0.0%	N/A	N/A	N/A	N/A	N/A	N/A



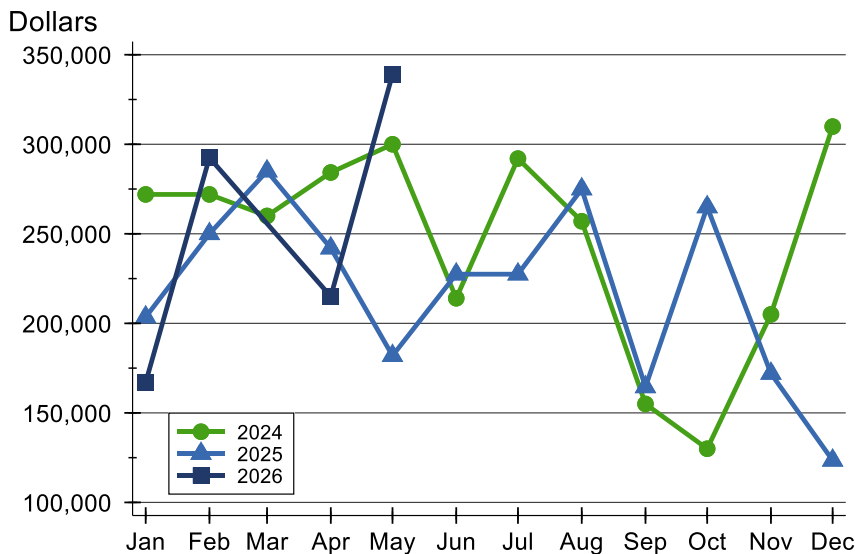
# Wabaunsee County Pending Contracts Analysis

## Average Price



Month	2024	2025	2026
January	284,380	203,500	167,000
February	319,000	246,633	292,500
March	260,000	310,800	N/A
April	341,833	273,113	197,475
May	367,250	219,150	271,000
June	230,333	269,300	
July	276,000	269,950	
August	257,000	305,000	
September	270,238	216,900	
October	130,000	303,750	
November	205,000	270,667	
December	350,633	123,500	

## Median Price

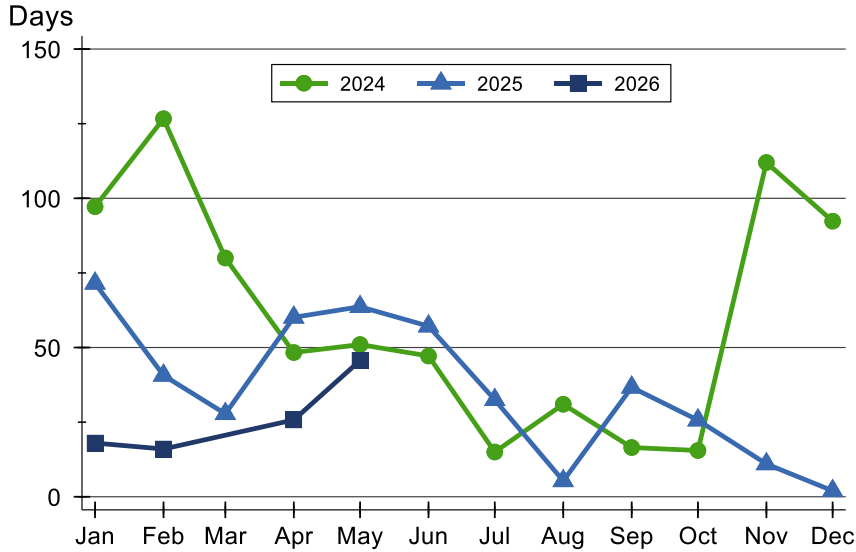


Month	2024	2025	2026
January	272,000	203,500	167,000
February	272,000	250,000	292,500
March	260,000	285,000	N/A
April	284,250	242,000	215,000
May	300,000	181,950	339,000
June	214,000	227,450	
July	292,000	227,450	
August	257,000	275,000	
September	155,000	164,500	
October	130,000	265,000	
November	205,000	172,000	
December	309,900	123,500	



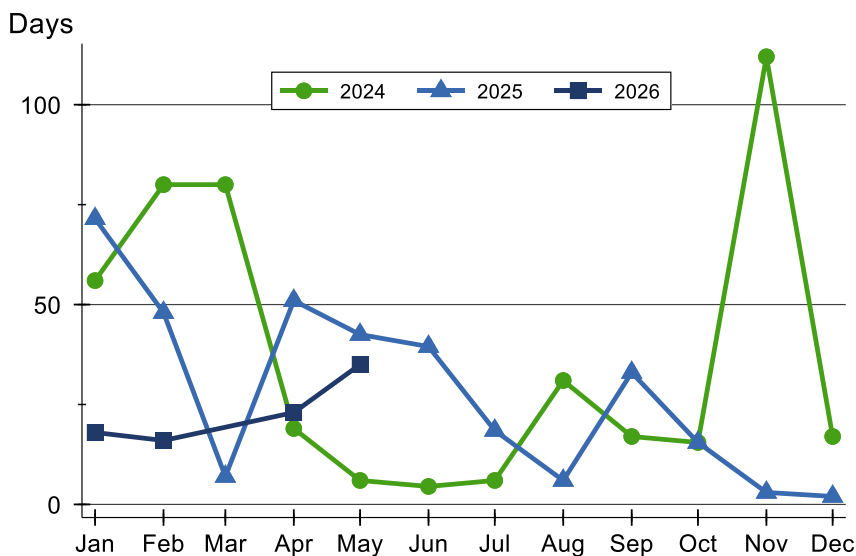
# Wabaunsee County Pending Contracts Analysis

## Average DOM



Month	2024	2025	2026
January	97	72	18
February	127	41	16
March	80	28	N/A
April	48	60	26
May	51	64	46
June	47	57	
July	15	33	
August	31	5	
September	17	37	
October	16	26	
November	112	11	
December	92	2	

## Median DOM



Month	2024	2025	2026
January	56	72	18
February	80	48	16
March	80	7	N/A
April	19	51	23
May	6	43	35
June	5	40	
July	6	19	
August	31	6	
September	17	33	
October	16	16	
November	112	3	
December	17	2	