



**June
2026**

Flint Hills MLS Statistics



**FLINT HILLS
ASSOCIATION
OF REALTORS®**

Wabaunsee County Housing Report



Market Overview

Wabaunsee County Home Sales Fell in June

Total home sales in Wabaunsee County fell last month to 2 units, compared to 3 units in June 2025. Total sales volume was \$0.5 million, down from a year earlier.

The median sale price in June was \$228,000, up from \$199,000 a year earlier. Homes that sold in June were typically on the market for 22 days and sold for 98.3% of their list prices.

Wabaunsee County Active Listings Up at End of June

The total number of active listings in Wabaunsee County at the end of June was 4 units, up from 3 at the same point in 2025. This represents a 1.9 months' supply of homes available for sale. The median list price of homes on the market at the end of June was \$475,000.

During June, a total of 5 contracts were written up from 2 in June 2025. At the end of the month, there were 6 contracts still pending.

Report Contents

- Summary Statistics – Page 2
- Closed Listing Analysis – Page 3
- Active Listings Analysis – Page 7
- Months' Supply Analysis – Page 11
- New Listings Analysis – Page 12
- Contracts Written Analysis – Page 15
- Pending Contracts Analysis – Page 19

Contact Information

Margaret Rezek, Association Executive
 Flint Hills Association of REALTORS®
 205 S. Seth Child Road
 Manhattan, KS 66502
 785-776-1203
ae@flinthillsrealtors.net
www.flinthillsrealtors.net



**June
2026**

Flint Hills MLS Statistics



**FLINT HILLS
ASSOCIATION
OF REALTORS®**

Wabaunsee County Summary Statistics

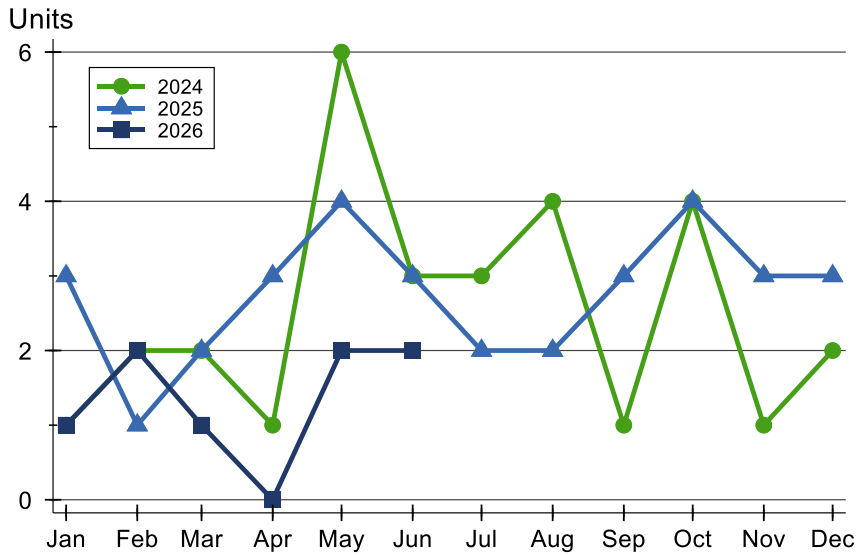
June MLS Statistics Three-year History		Current Month			Year-to-Date		
		2026	2025	2024	2026	2025	2024
Home Sales		2	3	3	8	16	15
Change from prior year		-33.3%	0.0%	200.0%	-50.0%	6.7%	66.7%
Active Listings		4	3	5	N/A	N/A	N/A
Change from prior year		33.3%	-40.0%	150.0%			
Months' Supply		1.9	1.2	2.1	N/A	N/A	N/A
Change from prior year		58.3%	-42.9%	50.0%			
New Listings		3	3	5	18	16	18
Change from prior year		0.0%	-40.0%	400.0%	12.5%	-11.1%	38.5%
Contracts Written		5	2	4	13	16	15
Change from prior year		150.0%	-50.0%	N/A	-18.8%	6.7%	15.4%
Pending Contracts		6	6	6	N/A	N/A	N/A
Change from prior year		0.0%	0.0%	50.0%			
Sales Volume (1,000s)		456	724	1,235	1,895	4,643	4,808
Change from prior year		-37.0%	-41.4%	349.1%	-59.2%	-3.4%	179.0%
Average	Sale Price	228,000	241,333	411,667	236,875	290,169	320,557
	Change from prior year	-5.5%	-41.4%	49.7%	-18.4%	-9.5%	67.4%
	List Price of Actives	858,725	236,633	445,590	N/A	N/A	N/A
	Change from prior year	262.9%	-46.9%	-34.7%			
	Days on Market	23	71	67	38	58	66
Change from prior year	-67.6%	6.0%	-13.0%	-34.5%	-12.1%	3.1%	
Percent of List	98.3%	96.3%	97.2%	98.1%	98.8%	96.5%	
Change from prior year	2.1%	-0.9%	-2.8%	-0.7%	2.4%	-1.9%	
Percent of Original	98.3%	90.6%	96.0%	96.4%	94.2%	93.7%	
Change from prior year	8.5%	-5.6%	4.3%	2.3%	0.5%	-3.1%	
Median	Sale Price	228,000	199,000	390,000	224,500	262,450	285,000
	Change from prior year	14.6%	-49.0%	41.8%	-14.5%	-7.9%	42.5%
	List Price of Actives	475,000	265,000	339,000	N/A	N/A	N/A
	Change from prior year	79.2%	-21.8%	-50.3%			
	Days on Market	23	39	8	20	28	51
Change from prior year	-41.0%	387.5%	-89.6%	-28.6%	-45.1%	70.0%	
Percent of List	98.3%	100.0%	94.0%	99.7%	100.0%	96.9%	
Change from prior year	-1.7%	6.4%	-6.0%	-0.3%	3.2%	-3.1%	
Percent of Original	98.3%	88.9%	94.0%	97.5%	97.9%	95.3%	
Change from prior year	10.6%	-5.4%	2.2%	-0.4%	2.7%	-3.2%	

Note: Year-to-date statistics cannot be calculated for Active Listings, Months' Supply and Pending Contracts.



Wabaunsee County Closed Listings Analysis

Closed Listings by Month



Month	2024	2025	2026
January	1	3	1
February	2	1	2
March	2	2	1
April	1	3	0
May	6	4	2
June	3	3	2
July	3	2	
August	4	2	
September	1	3	
October	4	4	
November	1	3	
December	2	3	

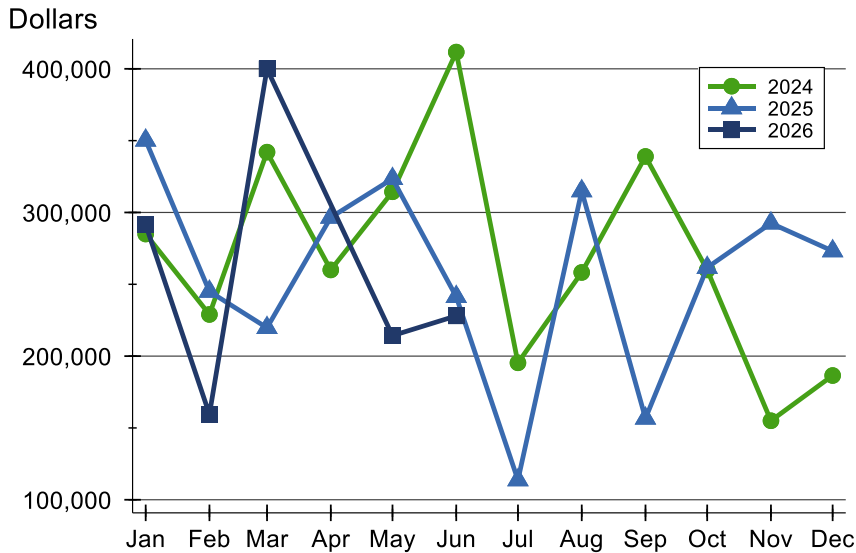
Closed Listings by Price Range

Price Range	Sales		Months' Supply	Sale Price		Days on Market		Price as % of List		Price as % of Orig.	
	Number	Percent		Average	Median	Avg.	Med.	Avg.	Med.	Avg.	Med.
Below \$25,000	0	0.0%	N/A	N/A	N/A	N/A	N/A	N/A	N/A	N/A	N/A
\$25,000-\$49,999	0	0.0%	N/A	N/A	N/A	N/A	N/A	N/A	N/A	N/A	N/A
\$50,000-\$99,999	1	50.0%	0.0	76,000	76,000	35	35	101.3%	101.3%	101.3%	101.3%
\$100,000-\$124,999	0	0.0%	N/A	N/A	N/A	N/A	N/A	N/A	N/A	N/A	N/A
\$125,000-\$149,999	0	0.0%	N/A	N/A	N/A	N/A	N/A	N/A	N/A	N/A	N/A
\$150,000-\$174,999	0	0.0%	N/A	N/A	N/A	N/A	N/A	N/A	N/A	N/A	N/A
\$175,000-\$199,999	0	0.0%	N/A	N/A	N/A	N/A	N/A	N/A	N/A	N/A	N/A
\$200,000-\$249,999	0	0.0%	N/A	N/A	N/A	N/A	N/A	N/A	N/A	N/A	N/A
\$250,000-\$299,999	0	0.0%	N/A	N/A	N/A	N/A	N/A	N/A	N/A	N/A	N/A
\$300,000-\$399,999	1	50.0%	0.0	380,000	380,000	10	10	95.2%	95.2%	95.2%	95.2%
\$400,000-\$499,999	0	0.0%	N/A	N/A	N/A	N/A	N/A	N/A	N/A	N/A	N/A
\$500,000-\$749,999	0	0.0%	N/A	N/A	N/A	N/A	N/A	N/A	N/A	N/A	N/A
\$750,000-\$999,999	0	0.0%	N/A	N/A	N/A	N/A	N/A	N/A	N/A	N/A	N/A
\$1,000,000 and up	0	0.0%	N/A	N/A	N/A	N/A	N/A	N/A	N/A	N/A	N/A



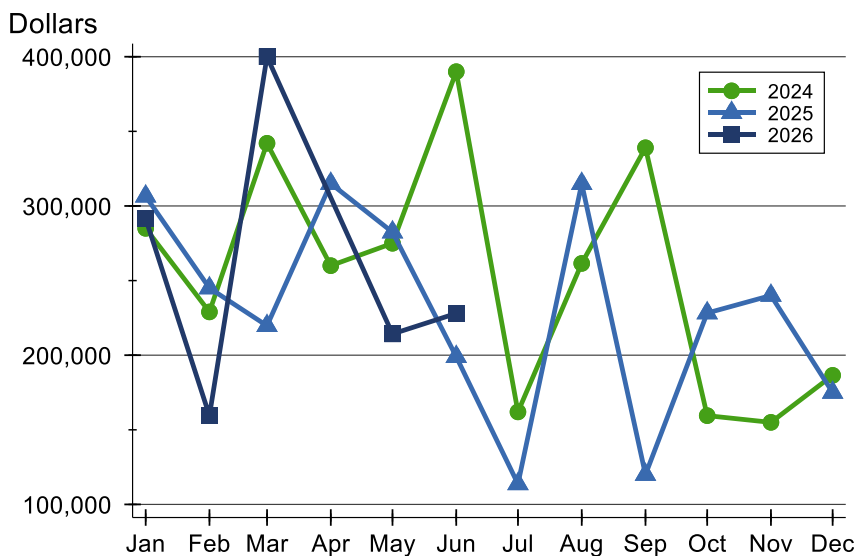
Wabaunsee County Closed Listings Analysis

Average Price



Month	2024	2025	2026
January	285,000	350,200	291,500
February	229,000	245,000	159,500
March	342,000	219,750	400,000
April	260,000	296,567	N/A
May	314,392	323,475	214,250
June	411,667	241,333	228,000
July	195,333	113,750	
August	258,250	314,950	
September	339,000	156,667	
October	260,000	261,626	
November	155,000	292,500	
December	186,500	273,167	

Median Price

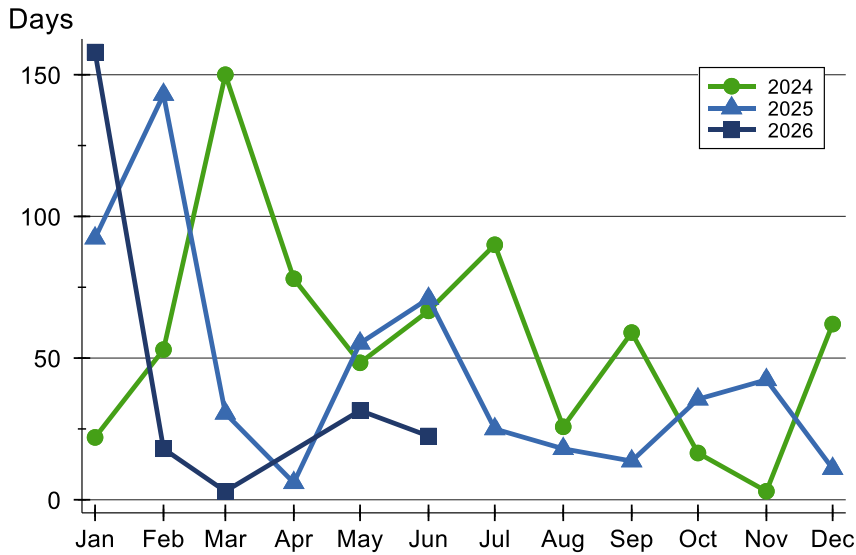


Month	2024	2025	2026
January	285,000	306,500	291,500
February	229,000	245,000	159,500
March	342,000	219,750	400,000
April	260,000	315,000	N/A
May	275,000	282,450	214,250
June	390,000	199,000	228,000
July	162,000	113,750	
August	261,500	314,950	
September	339,000	120,000	
October	159,500	228,250	
November	155,000	240,000	
December	186,500	175,000	



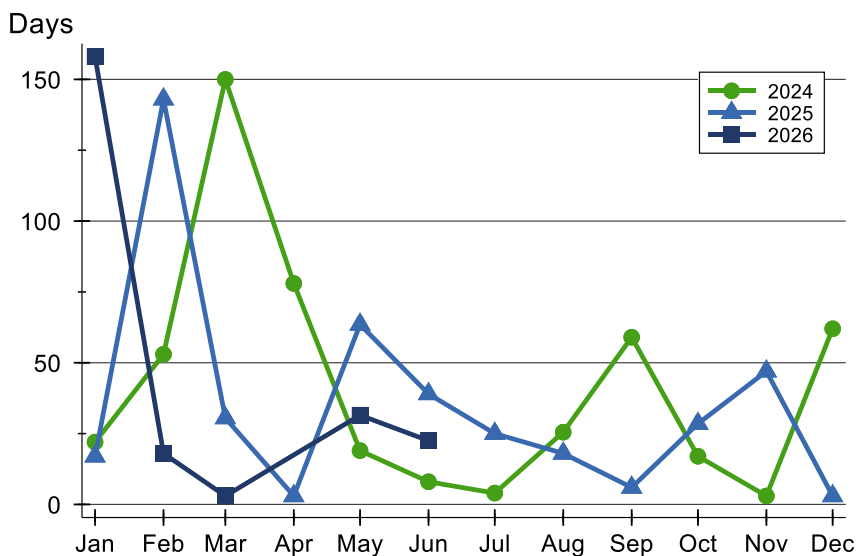
Wabaunsee County Closed Listings Analysis

Average DOM



Month	2024	2025	2026
January	22	92	158
February	53	143	18
March	150	31	3
April	78	6	N/A
May	48	55	32
June	67	71	23
July	90	25	
August	26	18	
September	59	14	
October	17	36	
November	3	42	
December	62	11	

Median DOM



Month	2024	2025	2026
January	22	17	158
February	53	143	18
March	150	31	3
April	78	3	N/A
May	19	64	32
June	8	39	23
July	4	25	
August	26	18	
September	59	6	
October	17	29	
November	3	47	
December	62	3	



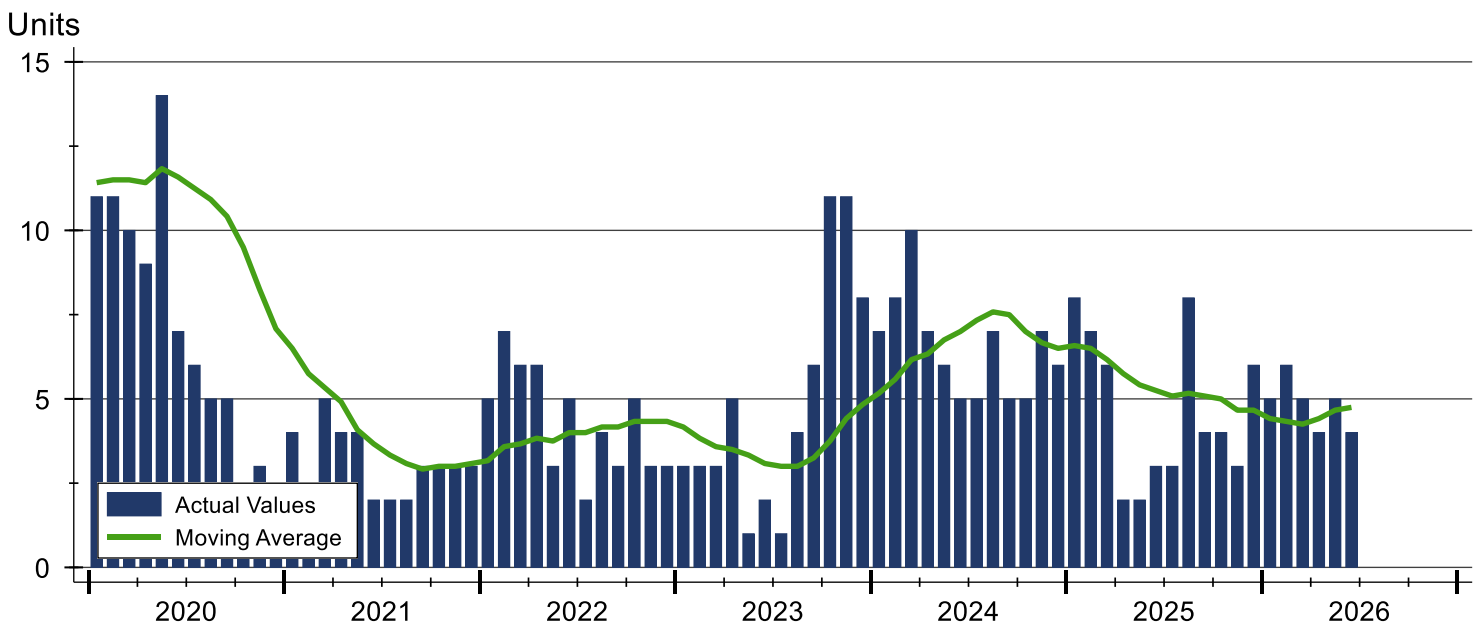
Wabaunsee County Active Listings Analysis

Summary Statistics for Active Listings		2026	End of June 2025	Change
Active Listings		4	3	33.3%
Volume (1,000s)		3,435	710	383.8%
Months' Supply		1.9	1.2	58.3%
Average	List Price	858,725	236,633	262.9%
	Days on Market	44	81	-45.7%
	Percent of Original	99.6%	98.5%	1.1%
Median	List Price	475,000	265,000	79.2%
	Days on Market	50	56	-10.7%
	Percent of Original	100.0%	98.3%	1.7%

A total of 4 homes were available for sale in Wabaunsee County at the end of June. This represents a 1.9 months' supply of active listings.

The median list price of homes on the market at the end of June was \$475,000, up 79.2% from 2025. The typical time on market for active listings was 50 days, down from 56 days a year earlier.

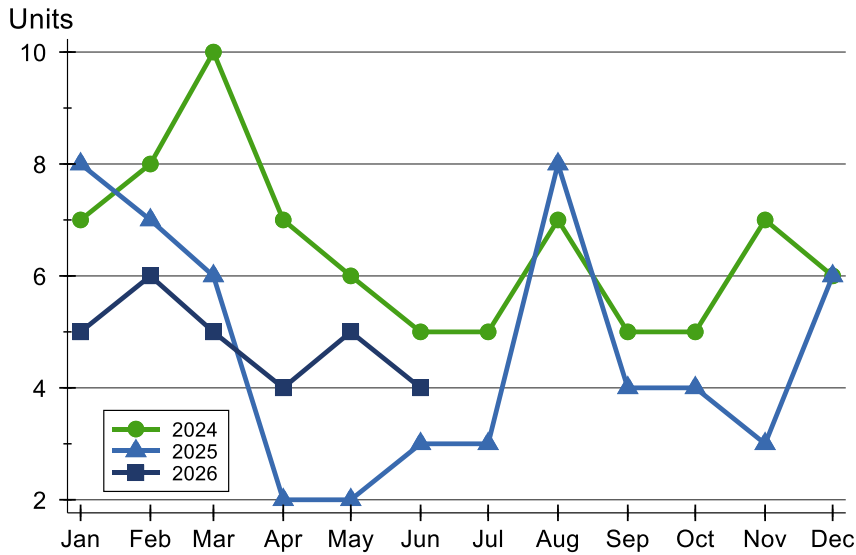
History of Active Listings





Wabaunsee County Active Listings Analysis

Active Listings by Month



Month	2024	2025	2026
January	7	8	5
February	8	7	6
March	10	6	5
April	7	2	4
May	6	2	5
June	5	3	4
July	5	3	4
August	7	8	4
September	5	4	4
October	5	4	4
November	7	3	4
December	6	6	4

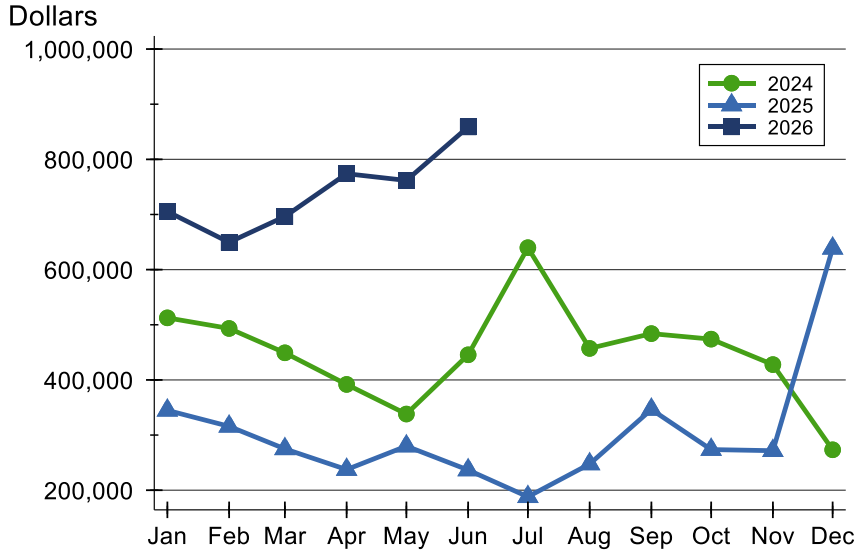
Active Listings by Price Range

Price Range	Active Listings		Months' Supply	List Price		Days on Market		Price as % of Orig.	
	Number	Percent		Average	Median	Avg.	Med.	Avg.	Med.
Below \$25,000	0	0.0%	N/A	N/A	N/A	N/A	N/A	N/A	N/A
\$25,000-\$49,999	0	0.0%	N/A	N/A	N/A	N/A	N/A	N/A	N/A
\$50,000-\$99,999	0	0.0%	0.0	N/A	N/A	N/A	N/A	N/A	N/A
\$100,000-\$124,999	0	0.0%	N/A	N/A	N/A	N/A	N/A	N/A	N/A
\$125,000-\$149,999	0	0.0%	N/A	N/A	N/A	N/A	N/A	N/A	N/A
\$150,000-\$174,999	0	0.0%	N/A	N/A	N/A	N/A	N/A	N/A	N/A
\$175,000-\$199,999	0	0.0%	N/A	N/A	N/A	N/A	N/A	N/A	N/A
\$200,000-\$249,999	0	0.0%	N/A	N/A	N/A	N/A	N/A	N/A	N/A
\$250,000-\$299,999	2	50.0%	N/A	287,450	287,450	50	50	99.2%	99.2%
\$300,000-\$399,999	0	0.0%	0.0	N/A	N/A	N/A	N/A	N/A	N/A
\$400,000-\$499,999	0	0.0%	N/A	N/A	N/A	N/A	N/A	N/A	N/A
\$500,000-\$749,999	1	25.0%	N/A	660,000	660,000	5	5	100.0%	100.0%
\$750,000-\$999,999	0	0.0%	N/A	N/A	N/A	N/A	N/A	N/A	N/A
\$1,000,000 and up	1	25.0%	N/A	2,200,000	2,200,000	69	69	100.0%	100.0%



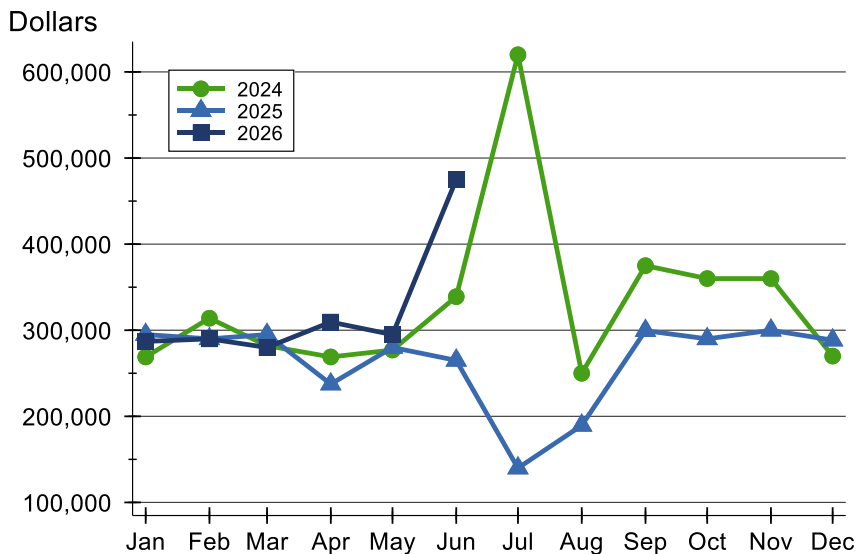
Wabaunsee County Active Listings Analysis

Average Price



Month	2024	2025	2026
January	512,571	344,863	705,380
February	493,375	315,857	649,500
March	449,200	275,000	696,400
April	391,857	237,450	774,000
May	338,150	280,000	761,760
June	445,590	236,633	858,725
July	639,800	188,133	
August	457,136	247,550	
September	484,000	346,500	
October	474,000	273,750	
November	427,843	271,667	
December	273,317	638,650	

Median Price

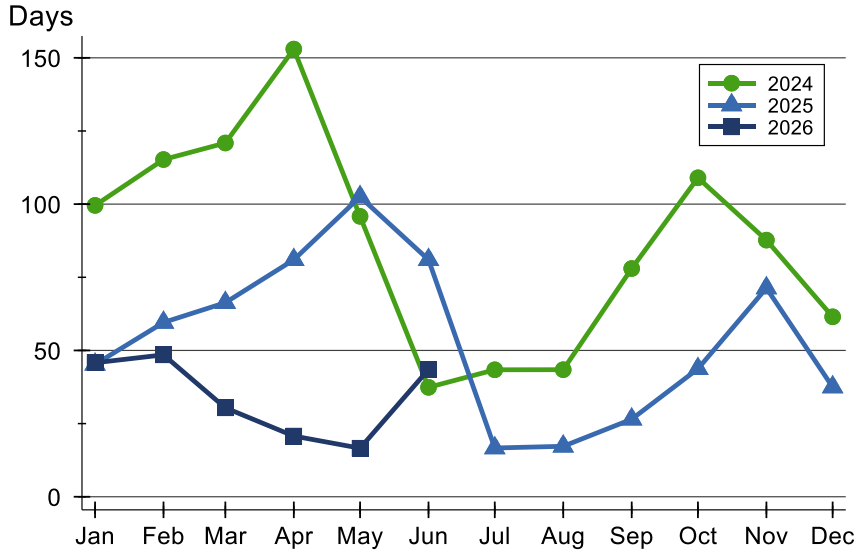


Month	2024	2025	2026
January	269,000	295,000	287,000
February	314,000	290,000	290,000
March	282,000	295,000	279,999
April	269,000	237,450	309,500
May	277,000	280,000	294,900
June	339,000	265,000	475,000
July	620,000	139,900	
August	250,000	189,500	
September	375,000	299,500	
October	360,000	290,000	
November	360,000	300,000	
December	270,000	288,500	



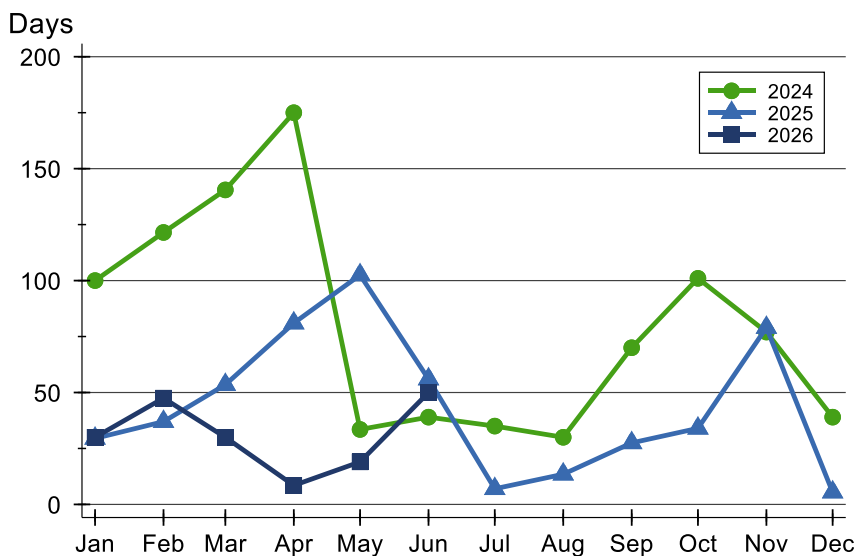
Wabaunsee County Active Listings Analysis

Average DOM



Month	2024	2025	2026
January	100	45	46
February	115	60	49
March	121	66	30
April	153	81	21
May	96	103	17
June	37	81	44
July	43	17	
August	43	17	
September	78	27	
October	109	44	
November	88	71	
December	62	38	

Median DOM

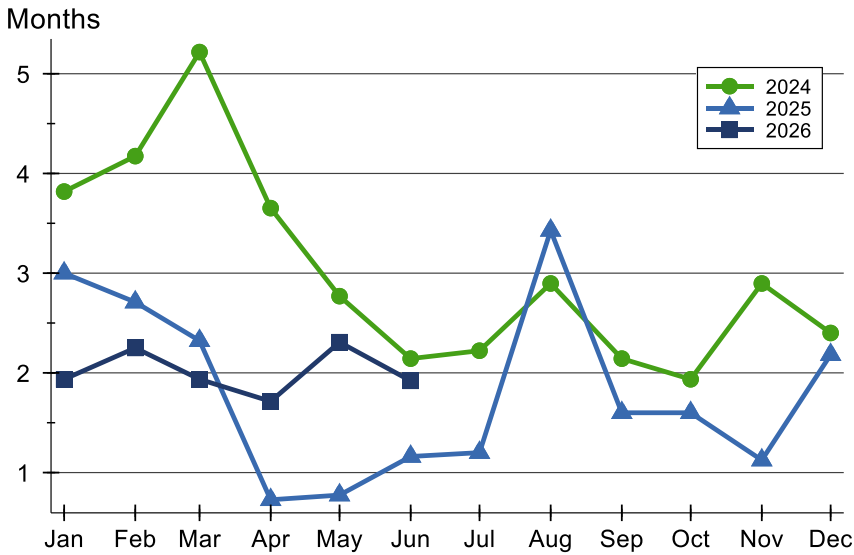


Month	2024	2025	2026
January	100	30	30
February	122	37	48
March	141	54	30
April	175	81	9
May	34	103	19
June	39	56	50
July	35	7	
August	30	14	
September	70	28	
October	101	34	
November	77	79	
December	39	6	



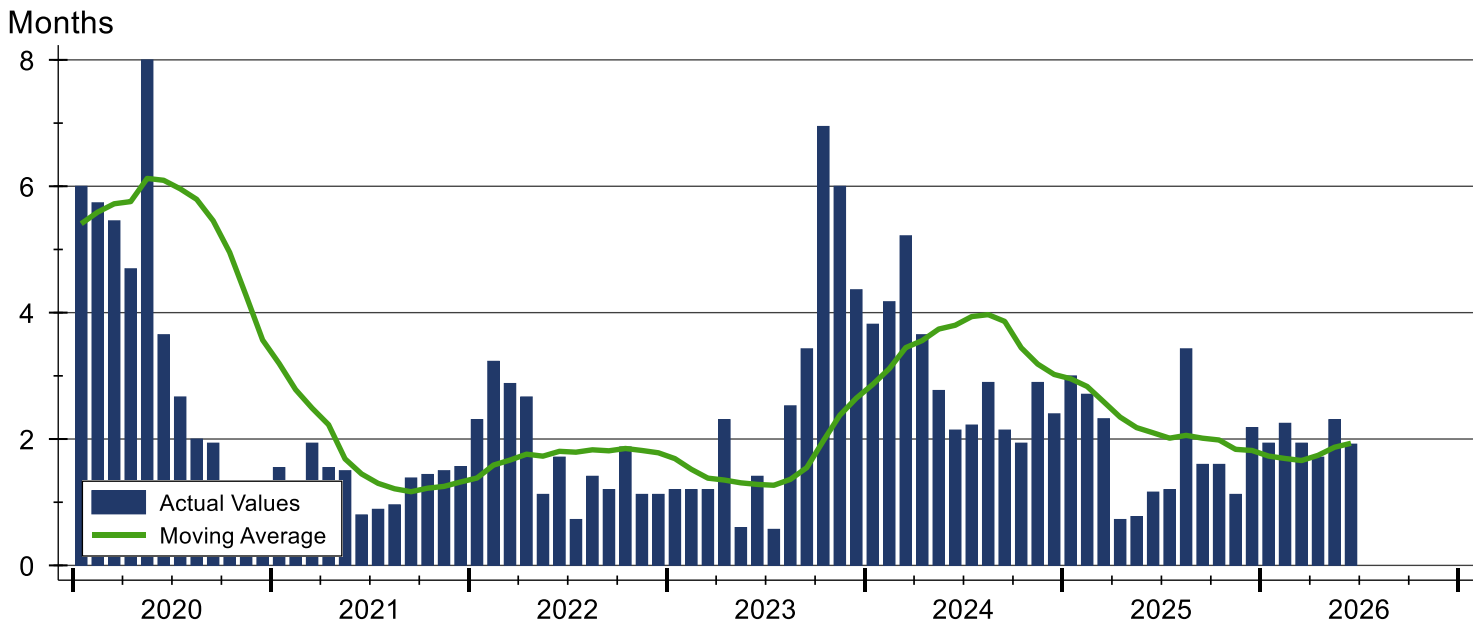
Wabaunsee County Months' Supply Analysis

Months' Supply by Month



Month	2024	2025	2026
January	3.8	3.0	1.9
February	4.2	2.7	2.3
March	5.2	2.3	1.9
April	3.7	0.7	1.7
May	2.8	0.8	2.3
June	2.1	1.2	1.9
July	2.2	1.2	
August	2.9	3.4	
September	2.1	1.6	
October	1.9	1.6	
November	2.9	1.1	
December	2.4	2.2	

History of Month's Supply





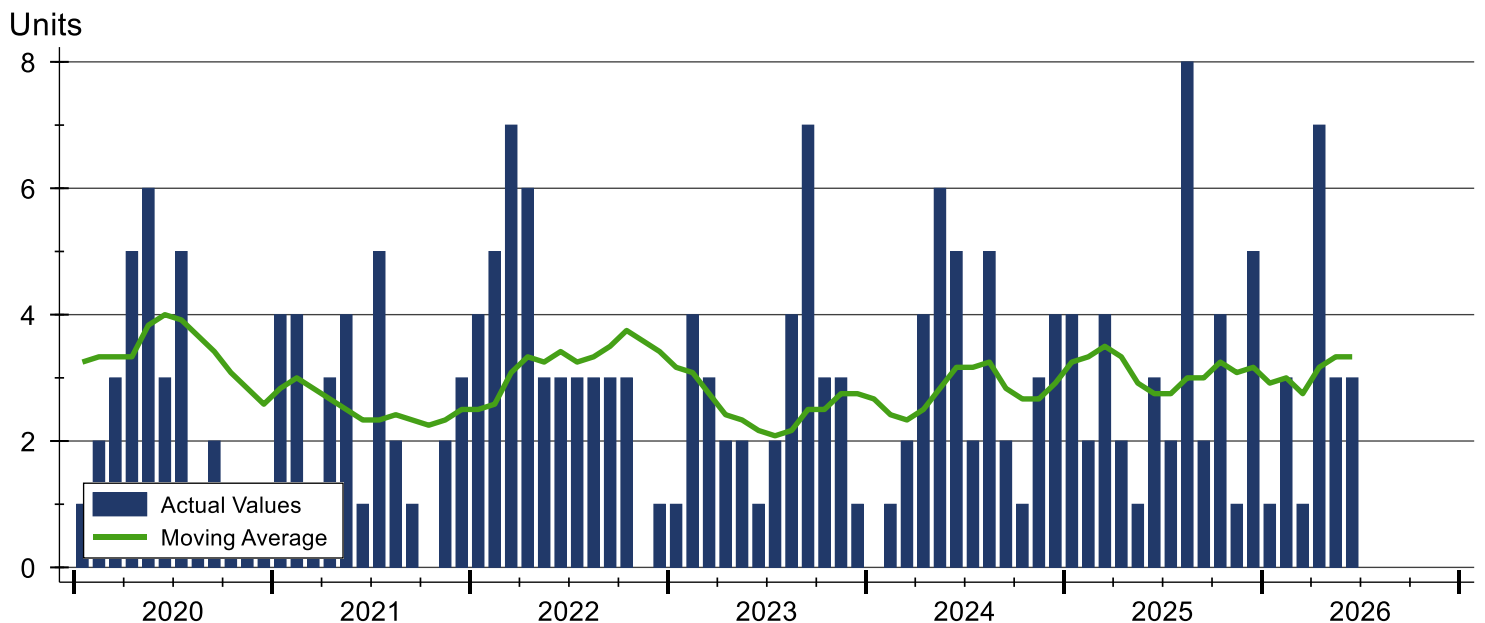
Wabaunsee County New Listings Analysis

Summary Statistics for New Listings		2026	June 2025	Change
Current Month	New Listings	3	3	0.0%
	Volume (1,000s)	1,152	765	50.6%
	Average List Price	384,000	254,933	50.6%
	Median List Price	277,000	149,900	84.8%
Year-to-Date	New Listings	18	16	12.5%
	Volume (1,000s)	7,482	4,079	83.4%
	Average List Price	415,661	254,913	63.1%
	Median List Price	280,000	224,500	24.7%

A total of 3 new listings were added in Wabaunsee County during June, the same figure as reported in 2025. Year-to-date Wabaunsee County has seen 18 new listings.

The median list price of these homes was \$277,000 up from \$149,900 in 2025.

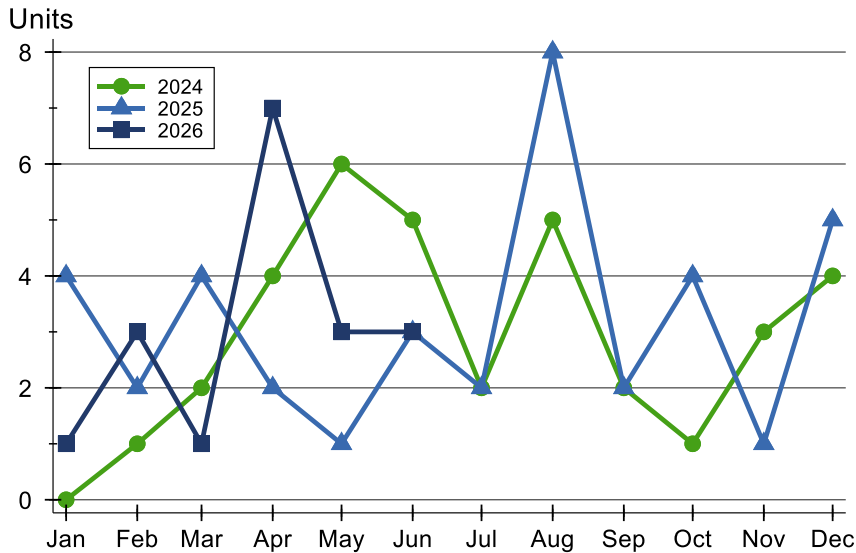
History of New Listings





Wabaunsee County New Listings Analysis

New Listings by Month



Month	2024	2025	2026
January	0	4	1
February	1	2	3
March	2	4	1
April	4	2	7
May	6	1	3
June	5	3	3
July	2	2	
August	5	8	
September	2	2	
October	1	4	
November	3	1	
December	4	5	

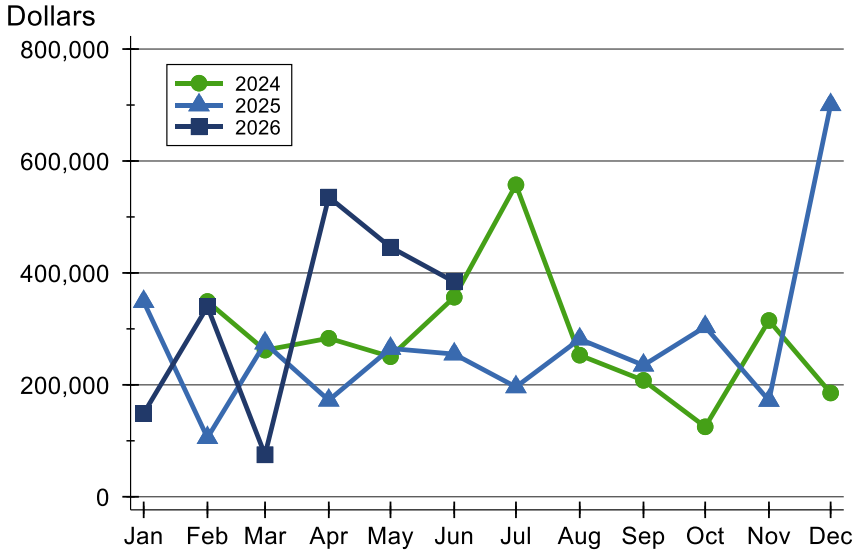
New Listings by Price Range

Price Range	New Listings		List Price		Days on Market		Price as % of Orig.	
	Number	Percent	Average	Median	Avg.	Med.	Avg.	Med.
Below \$25,000	0	0.0%	N/A	N/A	N/A	N/A	N/A	N/A
\$25,000-\$49,999	0	0.0%	N/A	N/A	N/A	N/A	N/A	N/A
\$50,000-\$99,999	0	0.0%	N/A	N/A	N/A	N/A	N/A	N/A
\$100,000-\$124,999	0	0.0%	N/A	N/A	N/A	N/A	N/A	N/A
\$125,000-\$149,999	0	0.0%	N/A	N/A	N/A	N/A	N/A	N/A
\$150,000-\$174,999	0	0.0%	N/A	N/A	N/A	N/A	N/A	N/A
\$175,000-\$199,999	0	0.0%	N/A	N/A	N/A	N/A	N/A	N/A
\$200,000-\$249,999	1	33.3%	215,000	215,000	3	3	100.0%	100.0%
\$250,000-\$299,999	1	33.3%	277,000	277,000	4	4	100.0%	100.0%
\$300,000-\$399,999	0	0.0%	N/A	N/A	N/A	N/A	N/A	N/A
\$400,000-\$499,999	0	0.0%	N/A	N/A	N/A	N/A	N/A	N/A
\$500,000-\$749,999	1	33.3%	660,000	660,000	5	5	100.0%	100.0%
\$750,000-\$999,999	0	0.0%	N/A	N/A	N/A	N/A	N/A	N/A
\$1,000,000 and up	0	0.0%	N/A	N/A	N/A	N/A	N/A	N/A



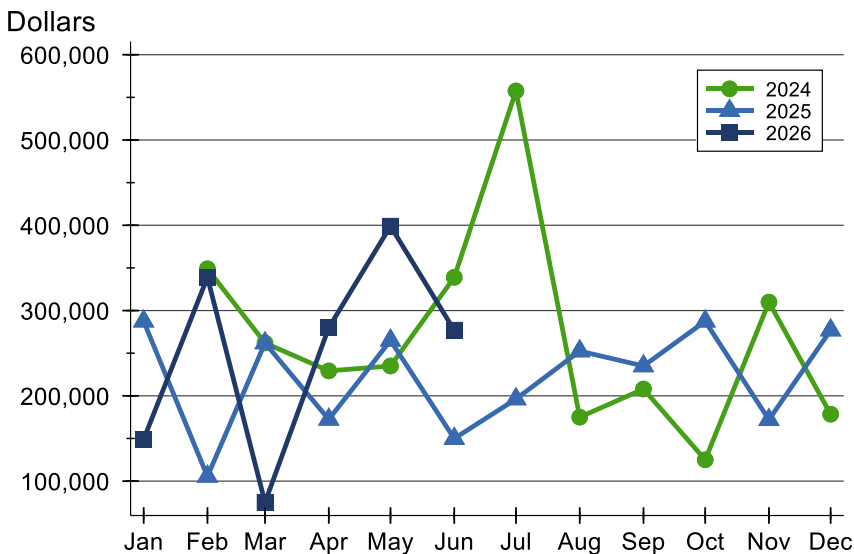
Wabaunsee County New Listings Analysis

Average Price



Month	2024	2025	2026
January	N/A	348,750	149,000
February	349,000	105,500	339,666
March	262,000	274,500	75,000
April	283,250	172,400	535,557
May	250,333	265,000	446,000
June	356,600	254,933	384,000
July	557,500	196,250	
August	252,980	281,750	
September	208,000	235,000	
October	125,000	303,750	
November	314,967	172,000	
December	185,450	700,380	

Median Price



Month	2024	2025	2026
January	N/A	287,500	149,000
February	349,000	105,500	339,000
March	262,000	262,000	75,000
April	229,250	172,400	280,000
May	235,000	265,000	399,000
June	339,000	149,900	277,000
July	557,500	196,250	
August	175,000	252,500	
September	208,000	235,000	
October	125,000	287,500	
November	309,900	172,000	
December	178,450	277,000	



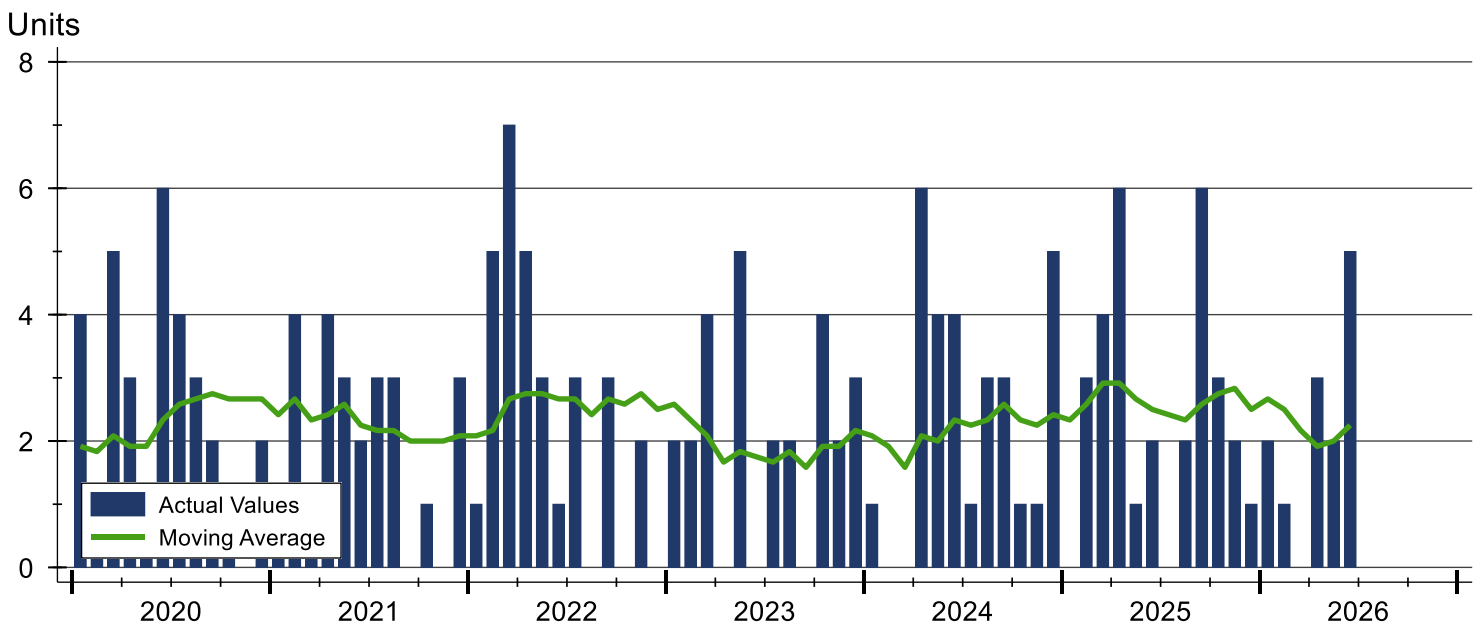
Wabaunsee County Contracts Written Analysis

Summary Statistics for Contracts Written		2026	June 2025	Change	Year-to-Date		
		2026	2025	Change	2026	2025	Change
Contracts Written		5	2	150.0%	13	16	-18.8%
Volume (1,000s)		1,698	625	171.7%	3,675	4,314	-14.8%
Average	Sale Price	339,600	312,450	8.7%	282,692	269,600	4.9%
	Days on Market	34	4	750.0%	31	37	-16.2%
	Percent of Original	95.7%	97.3%	-1.6%	96.6%	95.2%	1.5%
Median	Sale Price	277,000	312,450	-11.3%	277,000	224,500	23.4%
	Days on Market	47	4	1075.0%	29	23	26.1%
	Percent of Original	100.0%	97.3%	2.8%	100.0%	96.8%	3.3%

A total of 5 contracts for sale were written in Wabaunsee County during the month of June, up from 2 in 2025. The median list price of these homes was \$277,000, down from \$312,450 the prior year.

Half of the homes that went under contract in June were on the market less than 47 days, compared to 4 days in June 2025.

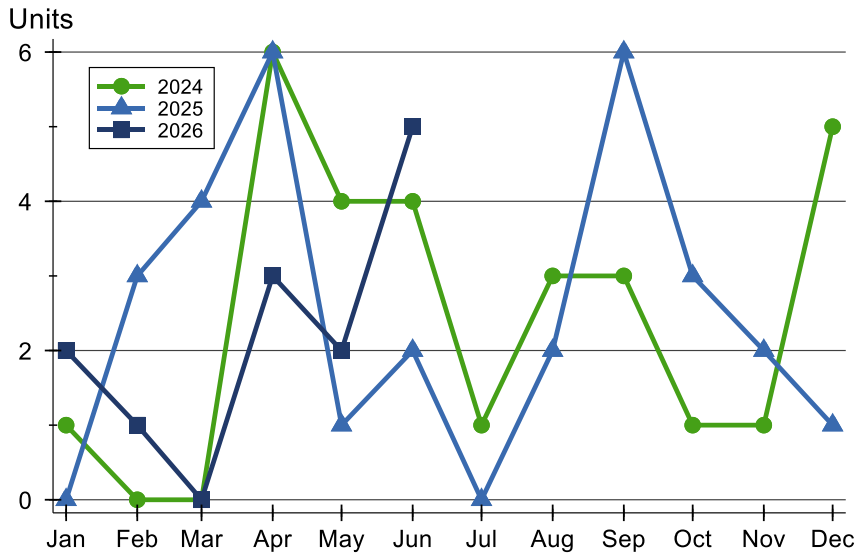
History of Contracts Written





Wabaunsee County Contracts Written Analysis

Contracts Written by Month



Month	2024	2025	2026
January	1	N/A	2
February	N/A	3	1
March	N/A	4	N/A
April	6	6	3
May	4	1	2
June	4	2	5
July	1	N/A	
August	3	2	
September	3	6	
October	1	3	
November	1	2	
December	5	1	

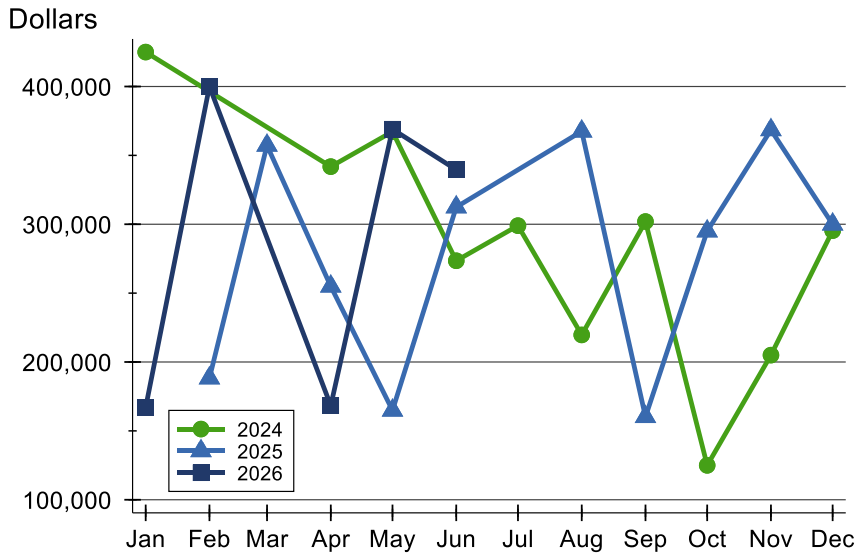
Contracts Written by Price Range

Price Range	Contracts Written		List Price		Days on Market		Price as % of Orig.	
	Number	Percent	Average	Median	Avg.	Med.	Avg.	Med.
Below \$25,000	0	0.0%	N/A	N/A	N/A	N/A	N/A	N/A
\$25,000-\$49,999	0	0.0%	N/A	N/A	N/A	N/A	N/A	N/A
\$50,000-\$99,999	0	0.0%	N/A	N/A	N/A	N/A	N/A	N/A
\$100,000-\$124,999	0	0.0%	N/A	N/A	N/A	N/A	N/A	N/A
\$125,000-\$149,999	0	0.0%	N/A	N/A	N/A	N/A	N/A	N/A
\$150,000-\$174,999	0	0.0%	N/A	N/A	N/A	N/A	N/A	N/A
\$175,000-\$199,999	0	0.0%	N/A	N/A	N/A	N/A	N/A	N/A
\$200,000-\$249,999	1	20.0%	215,000	215,000	3	3	100.0%	100.0%
\$250,000-\$299,999	3	60.0%	278,000	277,000	39	50	100.0%	100.0%
\$300,000-\$399,999	0	0.0%	N/A	N/A	N/A	N/A	N/A	N/A
\$400,000-\$499,999	0	0.0%	N/A	N/A	N/A	N/A	N/A	N/A
\$500,000-\$749,999	1	20.0%	649,000	649,000	47	47	78.4%	78.4%
\$750,000-\$999,999	0	0.0%	N/A	N/A	N/A	N/A	N/A	N/A
\$1,000,000 and up	0	0.0%	N/A	N/A	N/A	N/A	N/A	N/A



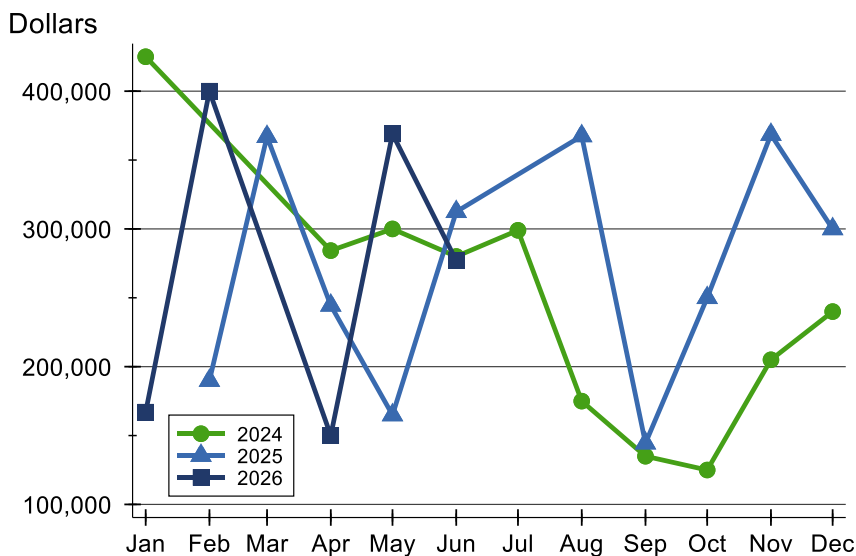
Wabaunsee County Contracts Written Analysis

Average Price



Month	2024	2025	2026
January	425,000	N/A	167,000
February	N/A	188,300	400,000
March	N/A	357,250	N/A
April	341,833	254,983	168,333
May	367,250	164,900	369,000
June	273,500	312,450	339,600
July	299,000	N/A	
August	219,667	367,500	
September	301,983	160,233	
October	125,000	295,000	
November	205,000	368,500	
December	295,380	300,000	

Median Price

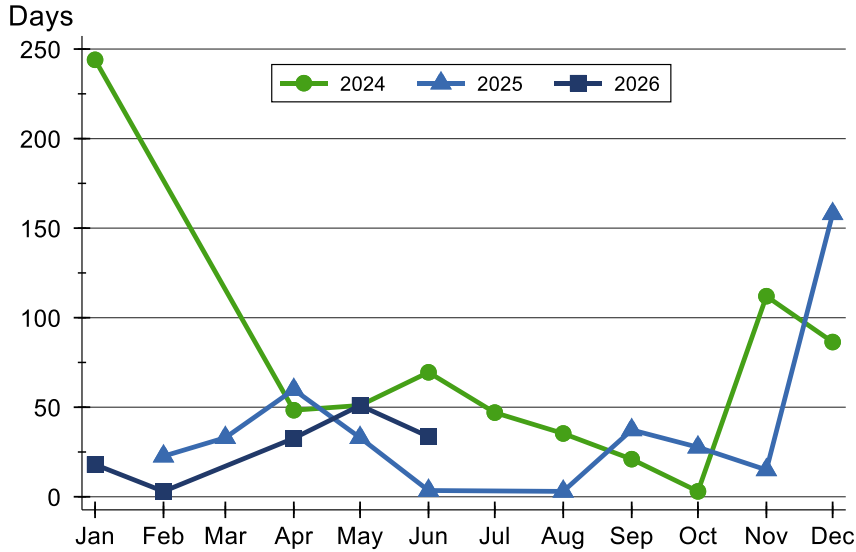


Month	2024	2025	2026
January	425,000	N/A	167,000
February	N/A	189,900	400,000
March	N/A	367,000	N/A
April	284,250	244,500	150,000
May	300,000	164,900	369,000
June	280,000	312,450	277,000
July	299,000	N/A	
August	175,000	367,500	
September	135,000	144,450	
October	125,000	250,000	
November	205,000	368,500	
December	240,000	300,000	



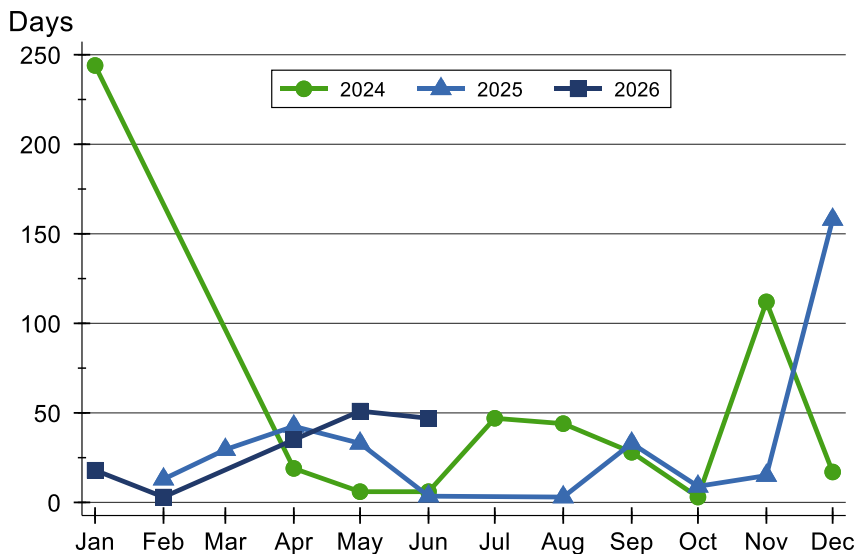
Wabaunsee County Contracts Written Analysis

Average DOM



Month	2024	2025	2026
January	244	N/A	18
February	N/A	23	3
March	N/A	33	N/A
April	48	60	33
May	51	33	51
June	70	4	34
July	47	N/A	
August	35	3	
September	21	37	
October	3	28	
November	112	15	
December	86	158	

Median DOM



Month	2024	2025	2026
January	244	N/A	18
February	N/A	13	3
March	N/A	30	N/A
April	19	43	35
May	6	33	51
June	6	4	47
July	47	N/A	
August	44	3	
September	28	33	
October	3	9	
November	112	15	
December	17	158	



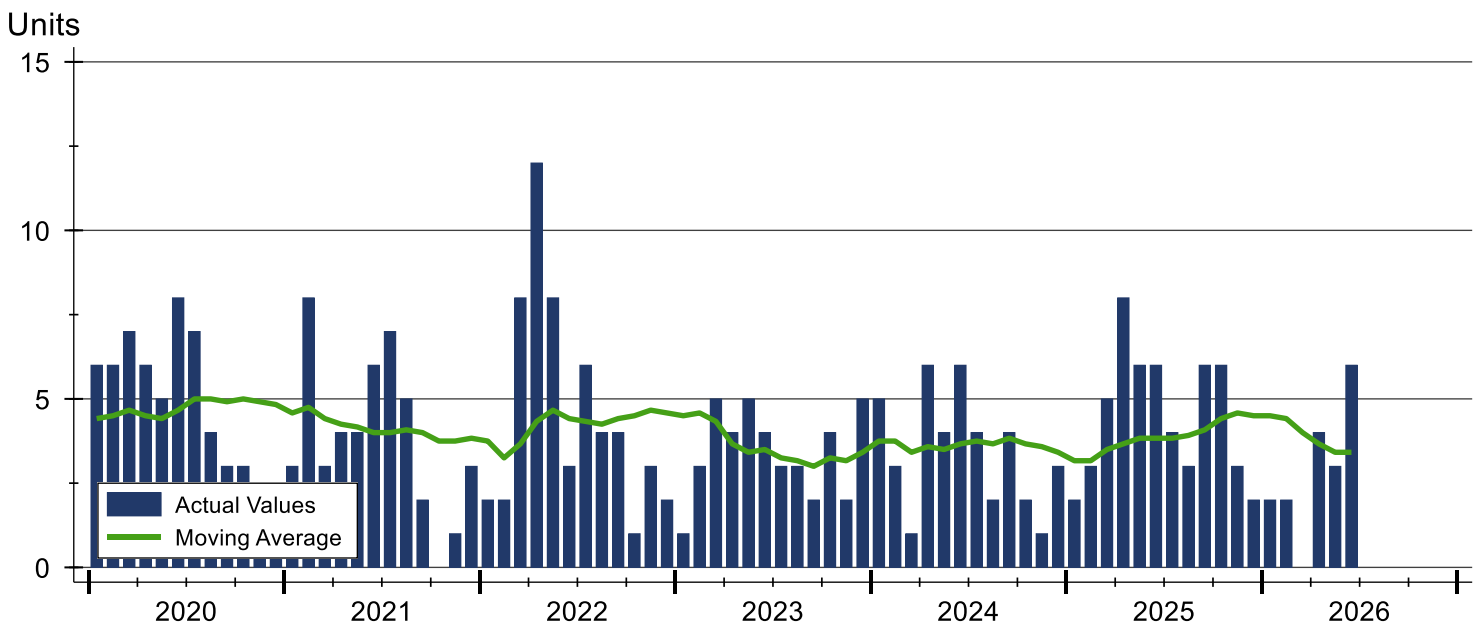
Wabaunsee County Pending Contracts Analysis

Summary Statistics for Pending Contracts		2026	End of June 2025	Change
Pending Contracts		6	6	0.0%
Volume (1,000s)		2,037	1,616	26.1%
Average	List Price	339,500	269,300	26.1%
	Days on Market	43	57	-24.6%
	Percent of Original	95.9%	98.6%	-2.7%
Median	List Price	278,500	227,450	22.4%
	Days on Market	49	40	22.5%
	Percent of Original	100.0%	100.0%	0.0%

A total of 6 listings in Wabaunsee County had contracts pending at the end of June, the same number of contracts pending at the end of June 2025.

Pending contracts reflect listings with a contract in place at the end of the month. In contrast, contracts written measures the number of listings put under contract during the month.

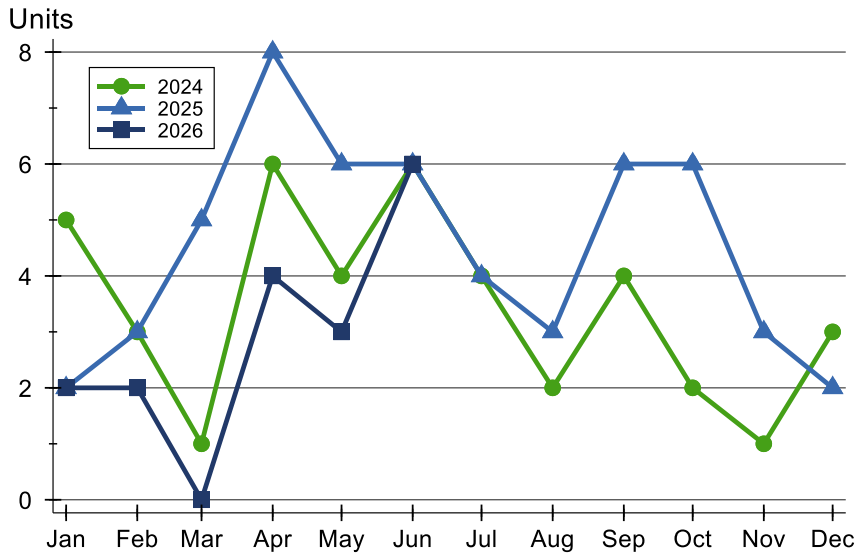
History of Pending Contracts





Wabaunsee County Pending Contracts Analysis

Pending Contracts by Month



Month	2024	2025	2026
January	5	2	2
February	3	3	2
March	1	5	0
April	6	8	4
May	4	6	3
June	6	6	6
July	4	4	
August	2	3	
September	4	6	
October	2	6	
November	1	3	
December	3	2	

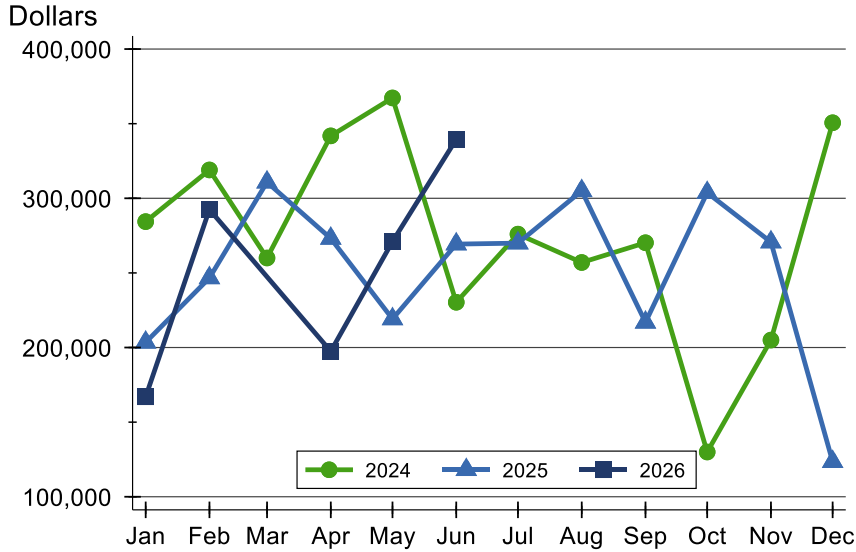
Pending Contracts by Price Range

Price Range	Pending Contracts		List Price		Days on Market		Price as % of Orig.	
	Number	Percent	Average	Median	Avg.	Med.	Avg.	Med.
Below \$25,000	0	0.0%	N/A	N/A	N/A	N/A	N/A	N/A
\$25,000-\$49,999	0	0.0%	N/A	N/A	N/A	N/A	N/A	N/A
\$50,000-\$99,999	0	0.0%	N/A	N/A	N/A	N/A	N/A	N/A
\$100,000-\$124,999	0	0.0%	N/A	N/A	N/A	N/A	N/A	N/A
\$125,000-\$149,999	0	0.0%	N/A	N/A	N/A	N/A	N/A	N/A
\$150,000-\$174,999	0	0.0%	N/A	N/A	N/A	N/A	N/A	N/A
\$175,000-\$199,999	0	0.0%	N/A	N/A	N/A	N/A	N/A	N/A
\$200,000-\$249,999	1	16.7%	215,000	215,000	3	3	100.0%	100.0%
\$250,000-\$299,999	3	50.0%	278,000	277,000	39	50	100.0%	100.0%
\$300,000-\$399,999	1	16.7%	339,000	339,000	92	92	96.9%	96.9%
\$400,000-\$499,999	0	0.0%	N/A	N/A	N/A	N/A	N/A	N/A
\$500,000-\$749,999	1	16.7%	649,000	649,000	47	47	78.4%	78.4%
\$750,000-\$999,999	0	0.0%	N/A	N/A	N/A	N/A	N/A	N/A
\$1,000,000 and up	0	0.0%	N/A	N/A	N/A	N/A	N/A	N/A



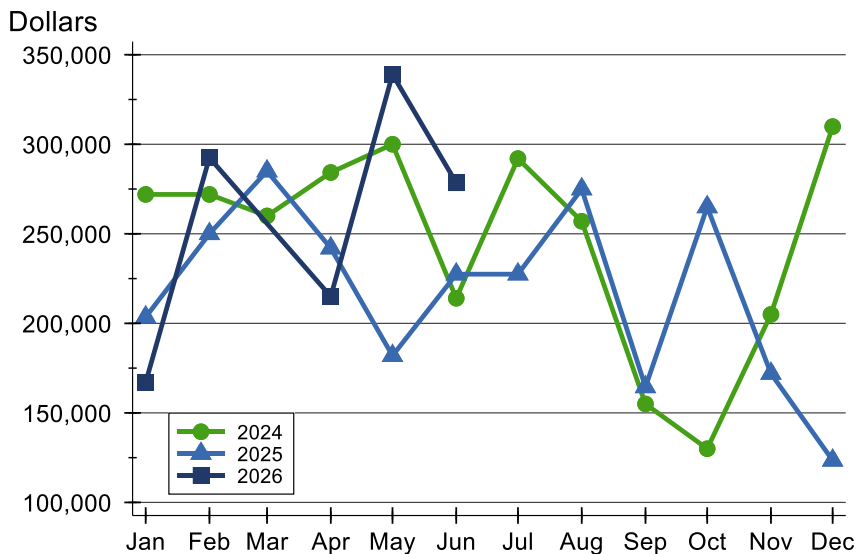
Wabaunsee County Pending Contracts Analysis

Average Price



Month	2024	2025	2026
January	284,380	203,500	167,000
February	319,000	246,633	292,500
March	260,000	310,800	N/A
April	341,833	273,113	197,475
May	367,250	219,150	271,000
June	230,333	269,300	339,500
July	276,000	269,950	
August	257,000	305,000	
September	270,238	216,900	
October	130,000	303,750	
November	205,000	270,667	
December	350,633	123,500	

Median Price

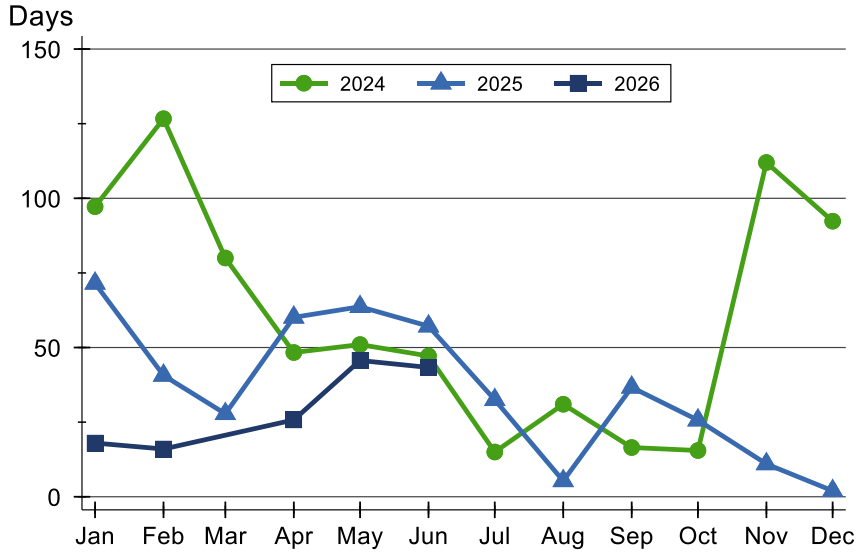


Month	2024	2025	2026
January	272,000	203,500	167,000
February	272,000	250,000	292,500
March	260,000	285,000	N/A
April	284,250	242,000	215,000
May	300,000	181,950	339,000
June	214,000	227,450	278,500
July	292,000	227,450	
August	257,000	275,000	
September	155,000	164,500	
October	130,000	265,000	
November	205,000	172,000	
December	309,900	123,500	



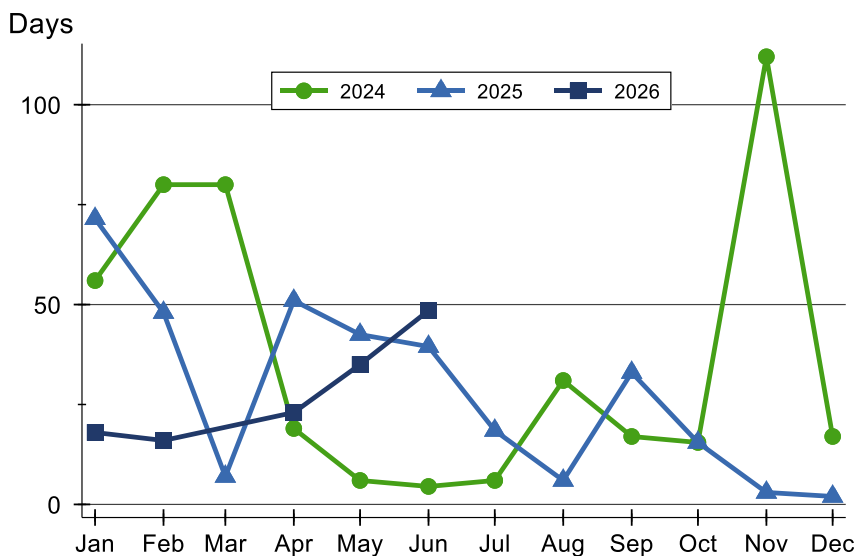
Wabaunsee County Pending Contracts Analysis

Average DOM



Month	2024	2025	2026
January	97	72	18
February	127	41	16
March	80	28	N/A
April	48	60	26
May	51	64	46
June	47	57	43
July	15	33	
August	31	5	
September	17	37	
October	16	26	
November	112	11	
December	92	2	

Median DOM



Month	2024	2025	2026
January	56	72	18
February	80	48	16
March	80	7	N/A
April	19	51	23
May	6	43	35
June	5	40	49
July	6	19	
August	31	6	
September	17	33	
October	16	16	
November	112	3	
December	17	2	